

Data Path : Z:\pestpcbsrv\HPCHEM1\ECD_O\Data\P0100923\
 Data File : P0098582.D
 Signal(s) : Signal #1: ECD1A.ch Signal #2: ECD2B.ch
 Acq On : 09 Oct 2023 15:50
 Operator : YP/AJ
 Sample : AR1660CCC500
 Misc :
 ALS Vial : 3 Sample Multiplier: 1

Instrument :
 ECD_O
 ClientSampleId :
 AR1660CCC500

Integration File signal 1: autoint1.e
 Integration File signal 2: autoint2.e
 Quant Time: Oct 10 03:32:48 2023
 Quant Method : Z:\pestpcbsrv\HPCHEM1\ECD_O\methods\P0092723.M
 Quant Title : GC EXTRACTABLES
 QLast Update : Thu Sep 28 01:18:56 2023
 Response via : Initial Calibration
 Integrator: ChemStation

Volume Inj. : 2 µl
 Signal #1 Phase : ZB-MR1 Signal #2 Phase: ZB-MR2
 Signal #1 Info : 30Mx0.32mmx 0.50µ Signal #2 Info : 30M x 0.32mm x 0.25µm

Compound	RT#1	RT#2	Resp#1	Resp#2	ng/ml	ng/ml

System Monitoring Compounds						
1) SA Tetrachlo...	4.482	3.636	98288768	38026666	51.187	48.823
2) SA Decachlor...	10.300	8.647	59530815	26046633	49.042	48.616
Target Compounds						
3) L1 AR-1016-1	5.657	4.720	28258022	11809817	522.873	494.792
4) L1 AR-1016-2	5.680	4.738	41948195	16571212	516.680	486.663
5) L1 AR-1016-3	5.743	4.914	26370939	9201744	527.072	511.532
6) L1 AR-1016-4	5.842	4.957	20871700	7699060	533.781	513.569
7) L1 AR-1016-5	6.137	5.169	21551440	9984716	524.099	514.135
31) L7 AR-1260-1	7.269	6.205	36777747	17850102	505.780	486.504
32) L7 AR-1260-2	7.527	6.394	41415704	20502016	502.979	488.603
33) L7 AR-1260-3	7.887	6.547	32763663	19585834	529.620	489.437
34) L7 AR-1260-4	8.114	7.019	36720762	15879266	544.717	493.097
35) L7 AR-1260-5	8.440	7.262	64498489	33448195	496.448	477.419

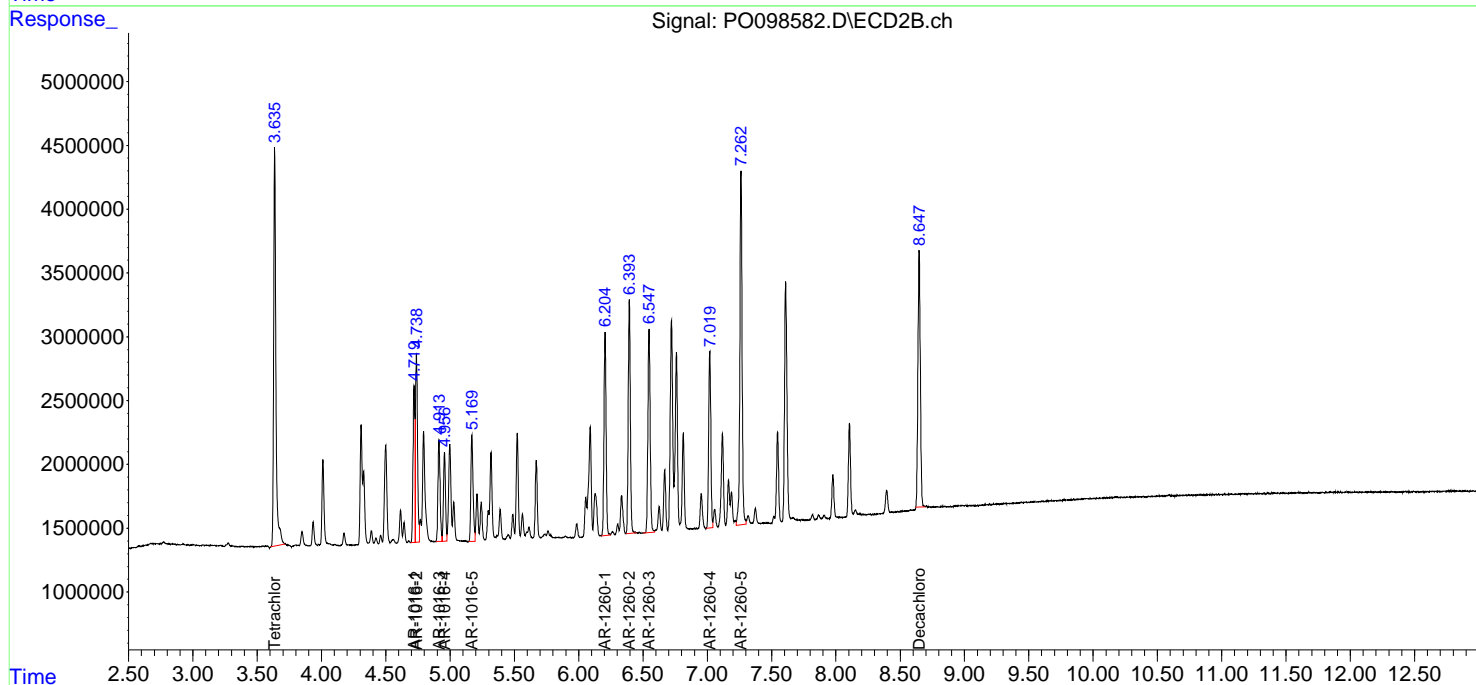
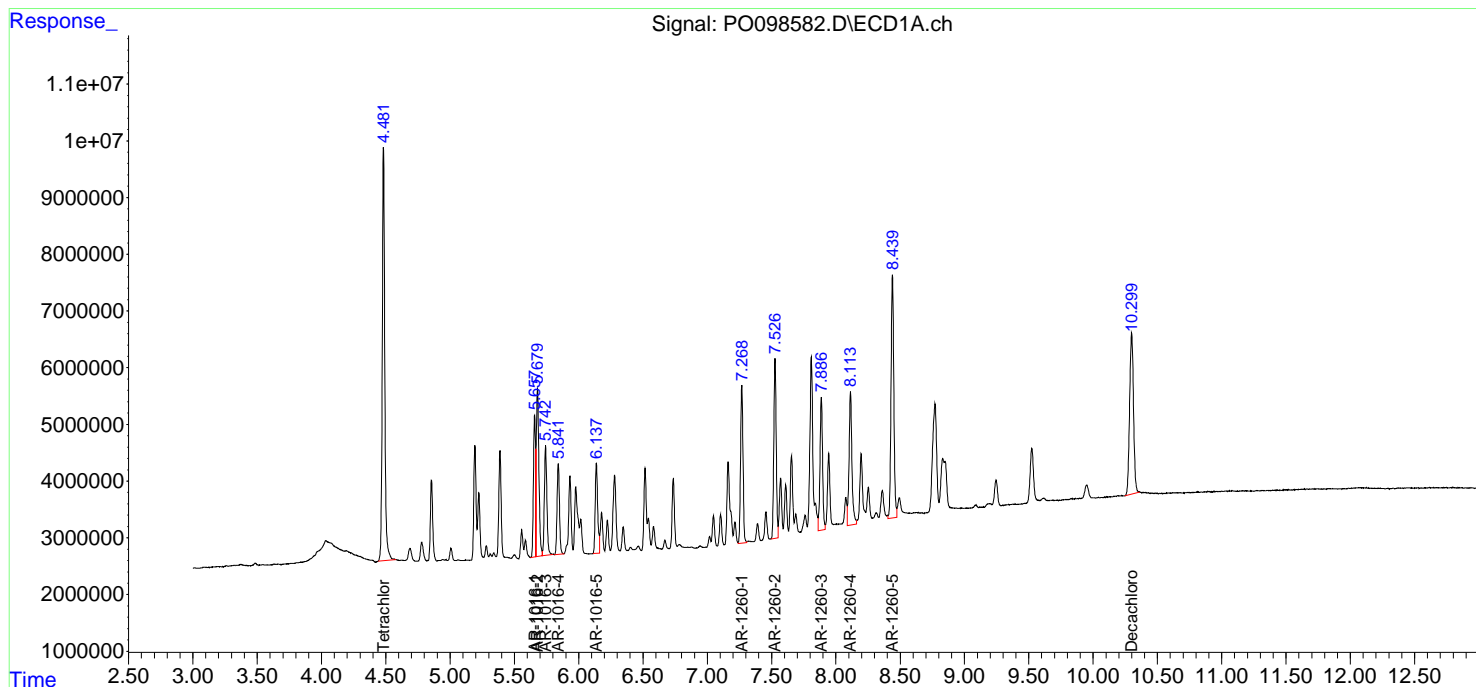
(f)=RT Delta > 1/2 Window (#)=Amounts differ by > 25% (m)=manual int.

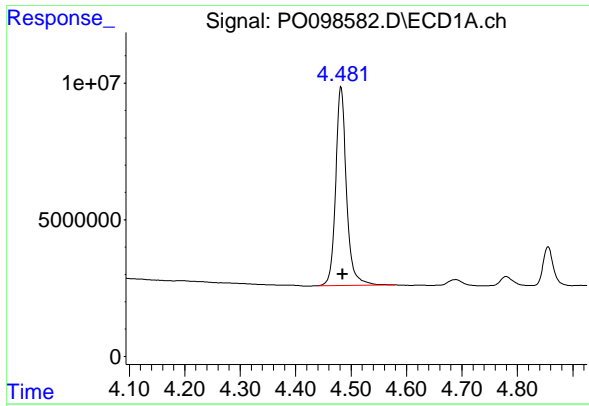
Data Path : Z:\pestpcbsrv\HPCHEM1\ECD_O\Data\PO100923\
 Data File : P0098582.D
 Signal(s) : Signal #1: ECD1A.ch Signal #2: ECD2B.ch
 Acq On : 09 Oct 2023 15:50
 Operator : YP/AJ
 Sample : AR1660CCC500
 Misc :
 ALS Vial : 3 Sample Multiplier: 1

Instrument :
 ECD_O
 ClientSampleId :
 AR1660CCC500

Integration File signal 1: autoint1.e
 Integration File signal 2: autoint2.e
 Quant Time: Oct 10 03:32:48 2023
 Quant Method : Z:\pestpcbsrv\HPCHEM1\ECD_O\methods\P0092723.M
 Quant Title : GC EXTRACTABLES
 QLast Update : Thu Sep 28 01:18:56 2023
 Response via : Initial Calibration
 Integrator: ChemStation

Volume Inj. : 2 µl
 Signal #1 Phase : ZB-MR1 Signal #2 Phase: ZB-MR2
 Signal #1 Info : 30Mx0.32mmx 0.50µ Signal #2 Info : 30M x 0.32mm x 0.25µm

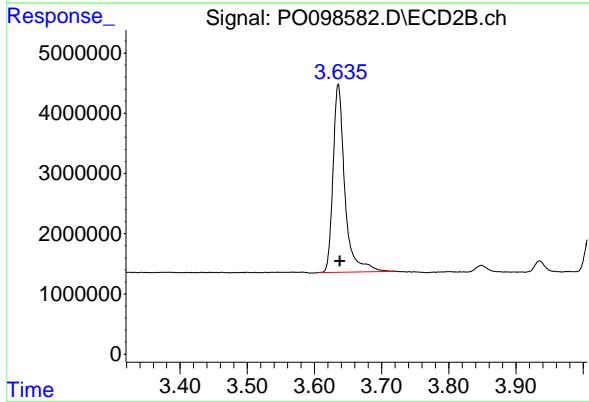




#1 Tetrachloro-m-xylene

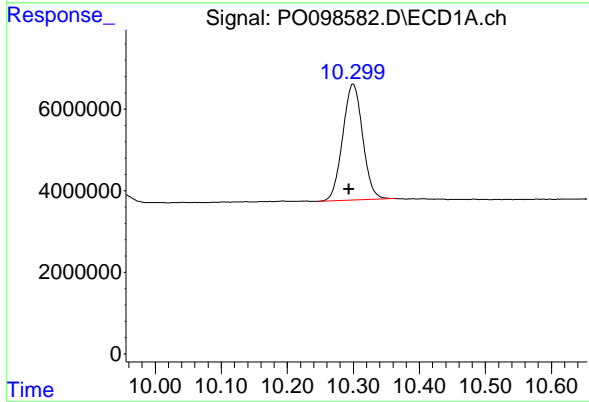
R.T.: 4.482 min
 Delta R.T.: -0.003 min
 Response: 98288768
 Conc: 51.19 ng/ml

Instrument :
 ECD_O
 ClientSampleId :
 AR1660CCC500



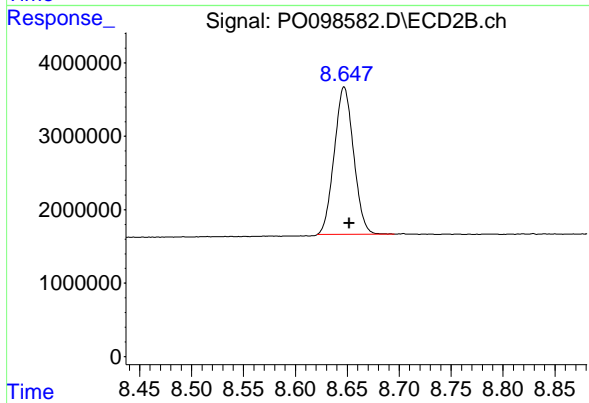
#1 Tetrachloro-m-xylene

R.T.: 3.636 min
 Delta R.T.: -0.002 min
 Response: 38026666
 Conc: 48.82 ng/ml



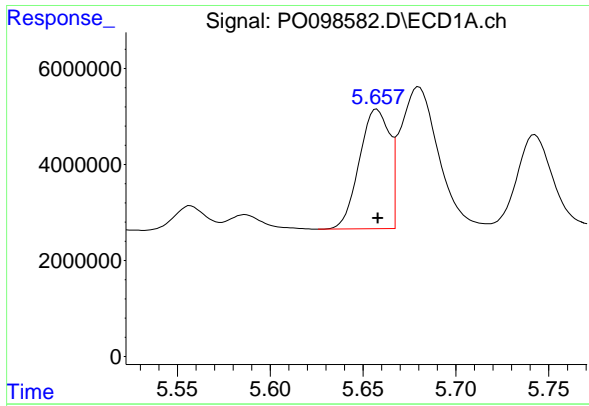
#2 Decachlorobiphenyl

R.T.: 10.300 min
 Delta R.T.: 0.006 min
 Response: 59530815
 Conc: 49.04 ng/ml



#2 Decachlorobiphenyl

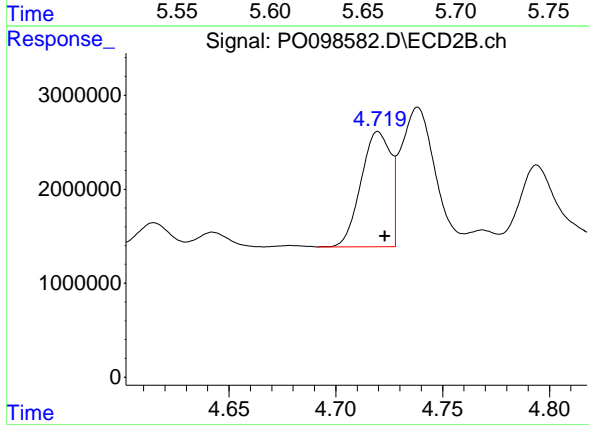
R.T.: 8.647 min
 Delta R.T.: -0.005 min
 Response: 26046633
 Conc: 48.62 ng/ml



#3 AR-1016-1

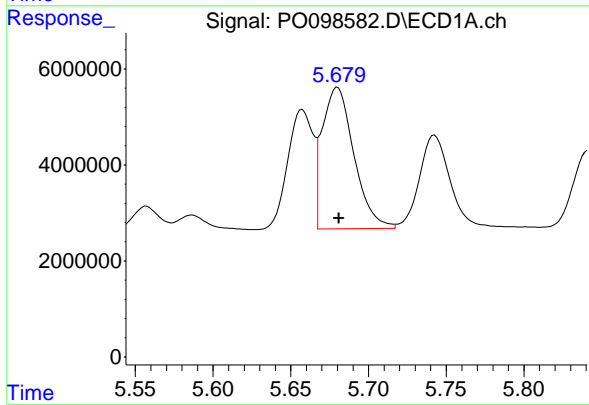
R.T.: 5.657 min
 Delta R.T.: 0.000 min
 Response: 28258022
 Conc: 522.87 ng/ml

Instrument :
 ECD_O
 ClientSampleId :
 AR1660CCC500



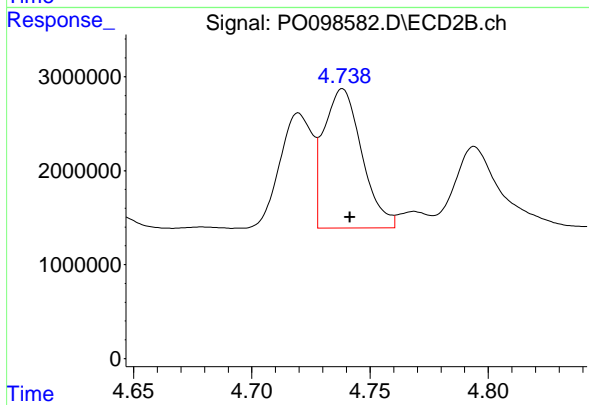
#3 AR-1016-1

R.T.: 4.720 min
 Delta R.T.: -0.003 min
 Response: 11809817
 Conc: 494.79 ng/ml



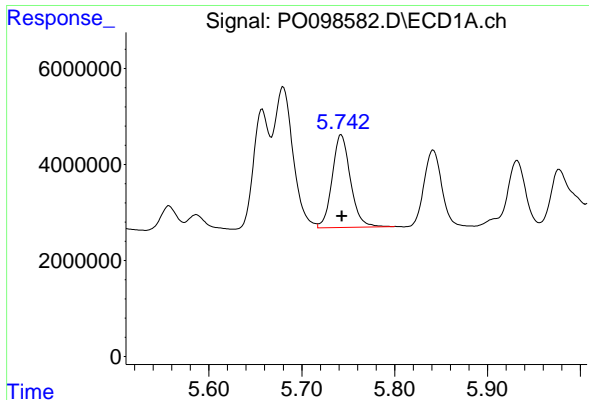
#4 AR-1016-2

R.T.: 5.680 min
 Delta R.T.: 0.000 min
 Response: 41948195
 Conc: 516.68 ng/ml



#4 AR-1016-2

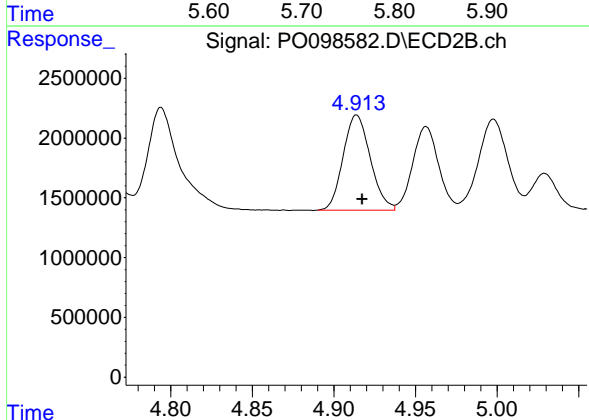
R.T.: 4.738 min
 Delta R.T.: -0.003 min
 Response: 16571212
 Conc: 486.66 ng/ml



#5 AR-1016-3

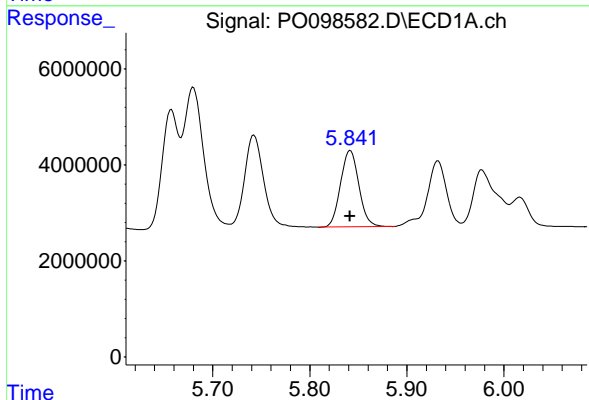
R.T.: 5.743 min
 Delta R.T.: 0.000 min
 Response: 26370939
 Conc: 527.07 ng/ml

Instrument :
 ECD_O
 ClientSampleId :
 AR1660CCC500



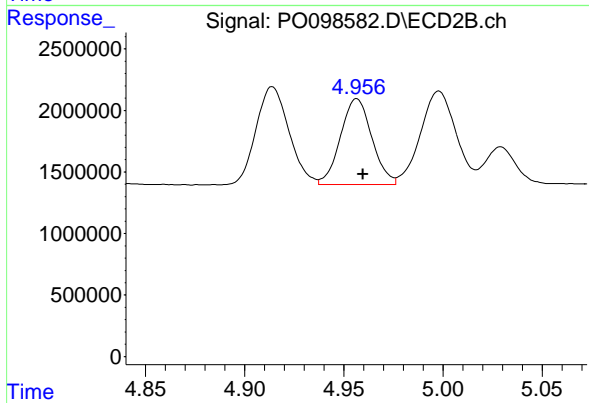
#5 AR-1016-3

R.T.: 4.914 min
 Delta R.T.: -0.003 min
 Response: 9201744
 Conc: 511.53 ng/ml



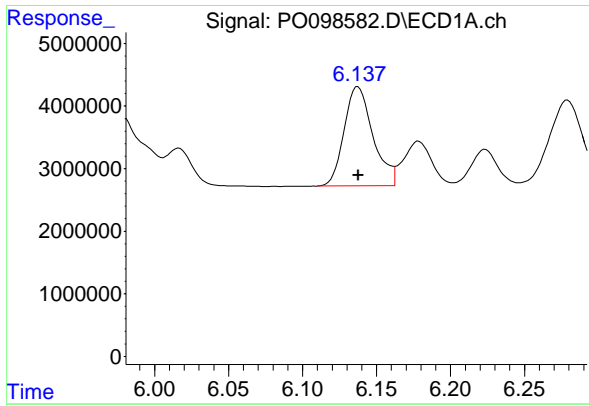
#6 AR-1016-4

R.T.: 5.842 min
 Delta R.T.: 0.000 min
 Response: 20871700
 Conc: 533.78 ng/ml



#6 AR-1016-4

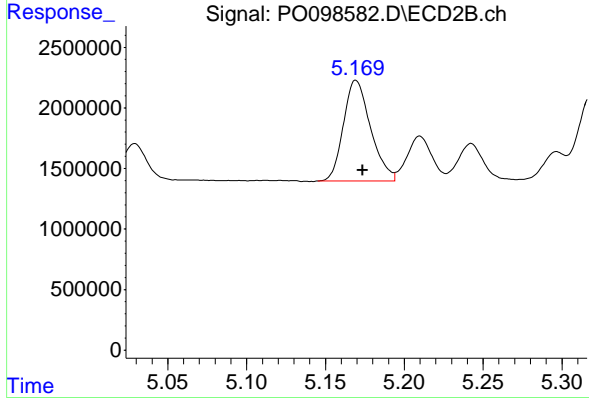
R.T.: 4.957 min
 Delta R.T.: -0.003 min
 Response: 7699060
 Conc: 513.57 ng/ml



#7 AR-1016-5

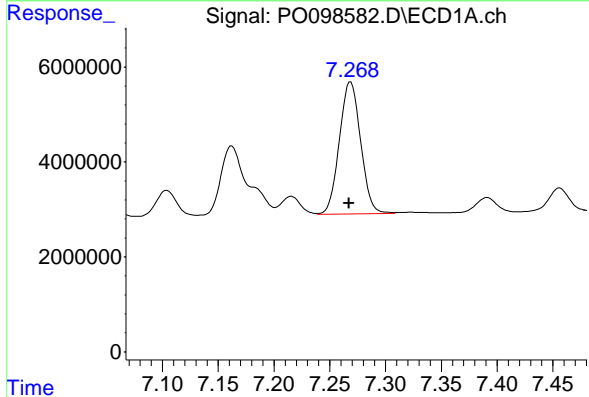
R.T.: 6.137 min
 Delta R.T.: 0.000 min
 Response: 21551440
 Conc: 524.10 ng/ml

Instrument :
 ECD_O
 ClientSampleId :
 AR1660CCC500



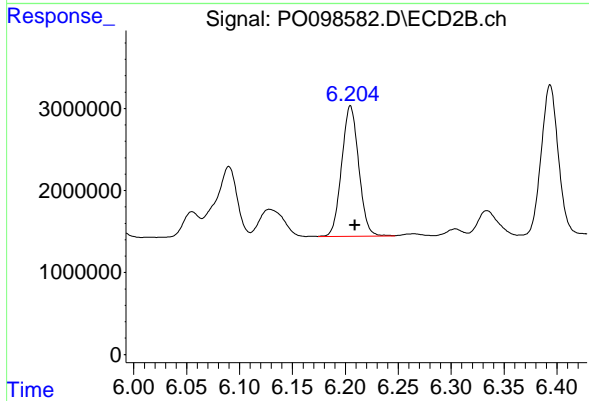
#7 AR-1016-5

R.T.: 5.169 min
 Delta R.T.: -0.004 min
 Response: 9984716
 Conc: 514.14 ng/ml



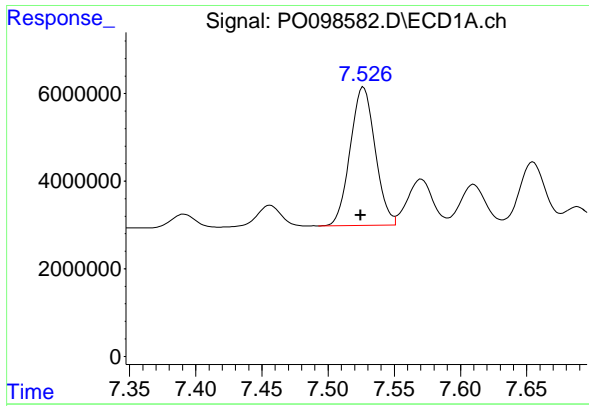
#31 AR-1260-1

R.T.: 7.269 min
 Delta R.T.: 0.001 min
 Response: 36777747
 Conc: 505.78 ng/ml



#31 AR-1260-1

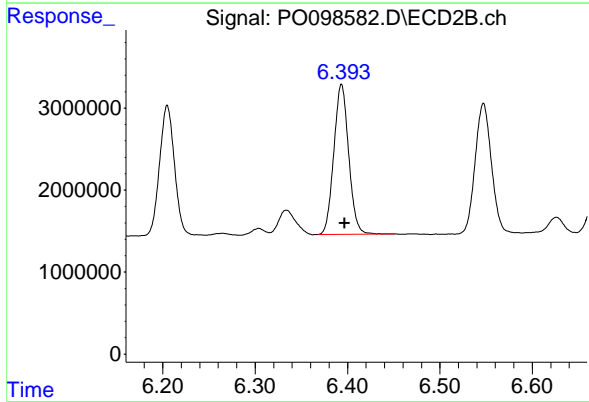
R.T.: 6.205 min
 Delta R.T.: -0.004 min
 Response: 17850102
 Conc: 486.50 ng/ml



#32 AR-1260-2

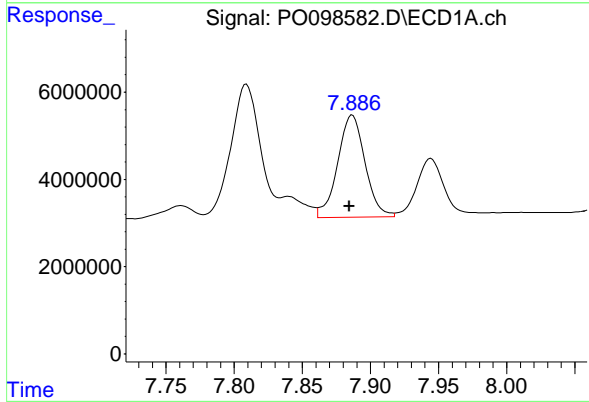
R.T.: 7.527 min
 Delta R.T.: 0.002 min
 Response: 41415704
 Conc: 502.98 ng/ml

Instrument :
 ECD_O
 ClientSampleId :
 AR1660CCC500



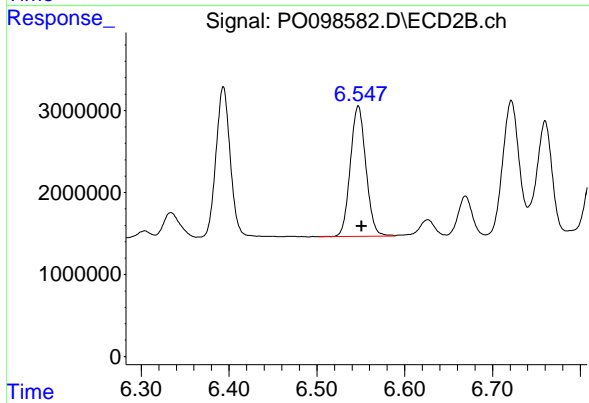
#32 AR-1260-2

R.T.: 6.394 min
 Delta R.T.: -0.004 min
 Response: 20502016
 Conc: 488.60 ng/ml



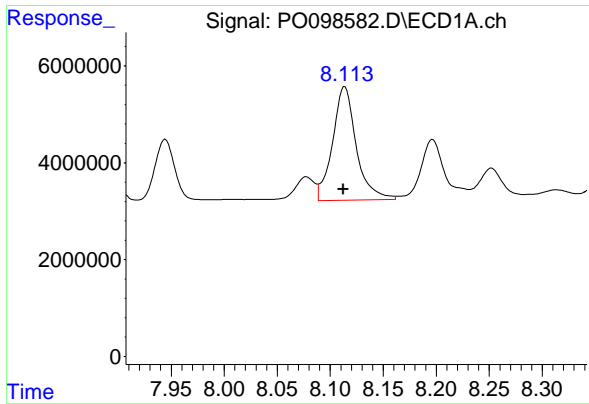
#33 AR-1260-3

R.T.: 7.887 min
 Delta R.T.: 0.002 min
 Response: 32763663
 Conc: 529.62 ng/ml



#33 AR-1260-3

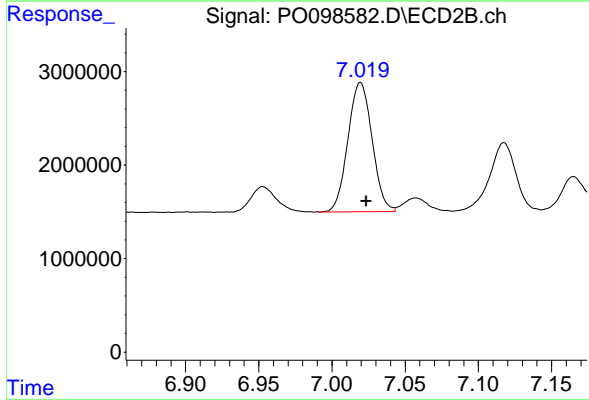
R.T.: 6.547 min
 Delta R.T.: -0.004 min
 Response: 19585834
 Conc: 489.44 ng/ml



#34 AR-1260-4

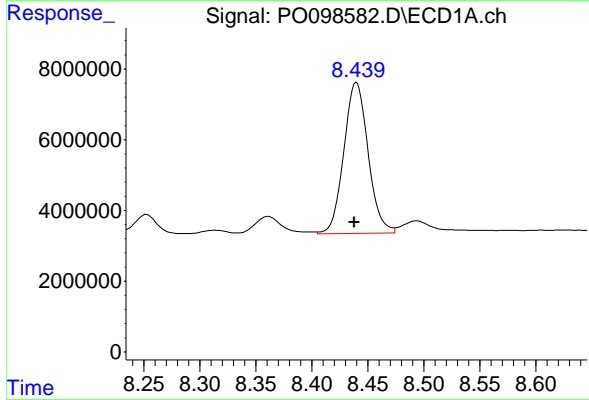
R.T.: 8.114 min
Delta R.T.: 0.001 min
Response: 36720762
Conc: 544.72 ng/ml

Instrument :
ECD_O
ClientSampleId :
AR1660CCC500



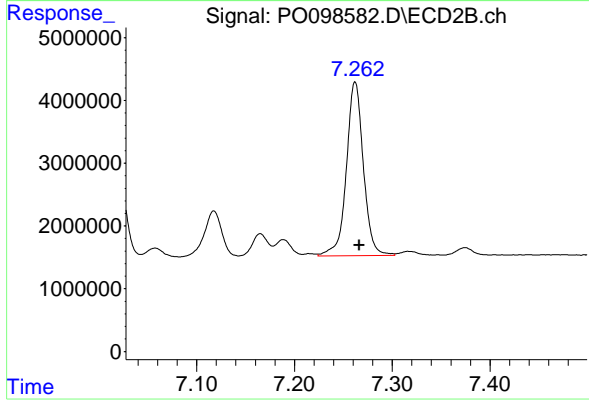
#34 AR-1260-4

R.T.: 7.019 min
Delta R.T.: -0.004 min
Response: 15879266
Conc: 493.10 ng/ml



#35 AR-1260-5

R.T.: 8.440 min
Delta R.T.: 0.002 min
Response: 64498489
Conc: 496.45 ng/ml



#35 AR-1260-5

R.T.: 7.262 min
Delta R.T.: -0.004 min
Response: 33448195
Conc: 477.42 ng/ml