

Data Path : Z:\pestpcbsrv\HPCHEM1\ECD_O\Data\P0100923\
 Data File : P0098583.D
 Signal(s) : Signal #1: ECD1A.ch Signal #2: ECD2B.ch
 Acq On : 09 Oct 2023 16:07
 Operator : YP/AJ
 Sample : I.BLK
 Misc :
 ALS Vial : 2 Sample Multiplier: 1

Instrument :
 ECD_O
 ClientSampleId :
 I.BLK

Integration File signal 1: autoint1.e
 Integration File signal 2: autoint2.e
 Quant Time: Oct 10 03:34:06 2023
 Quant Method : Z:\pestpcbsrv\HPCHEM1\ECD_O\methods\P0092723.M
 Quant Title : GC EXTRACTABLES
 QLast Update : Thu Sep 28 01:18:56 2023
 Response via : Initial Calibration
 Integrator: ChemStation

Volume Inj. : 2 µl
 Signal #1 Phase : ZB-MR1 Signal #2 Phase: ZB-MR2
 Signal #1 Info : 30Mx0.32mmx 0.50µ Signal #2 Info : 30M x 0.32mm x 0.25µm

Compound	RT#1	RT#2	Resp#1	Resp#2	ng/ml	ng/ml

System Monitoring Compounds						
1) SA Tetrachlo...	4.481	3.635	40070493	15257603	20.868	19.590
2) SA Decachlor...	10.299	8.645	25874150	11866483	21.316	22.149m

Target Compounds

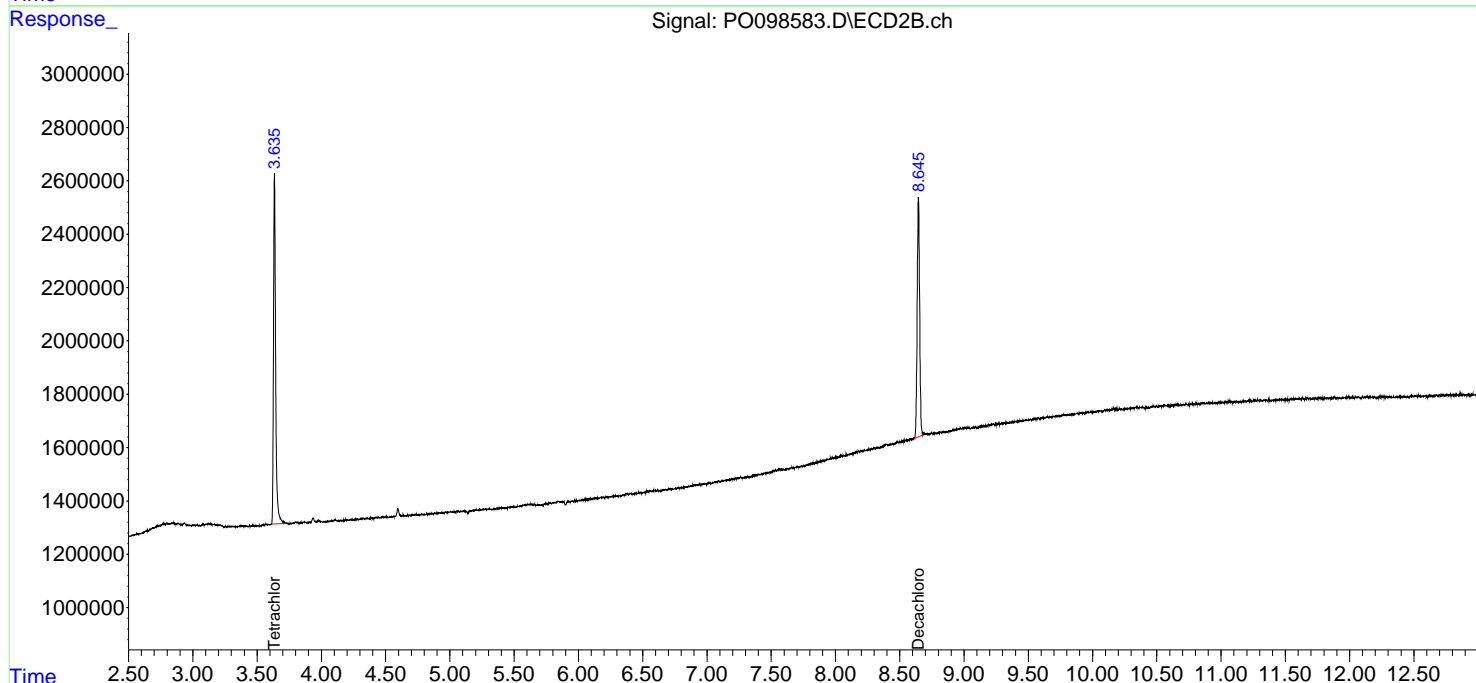
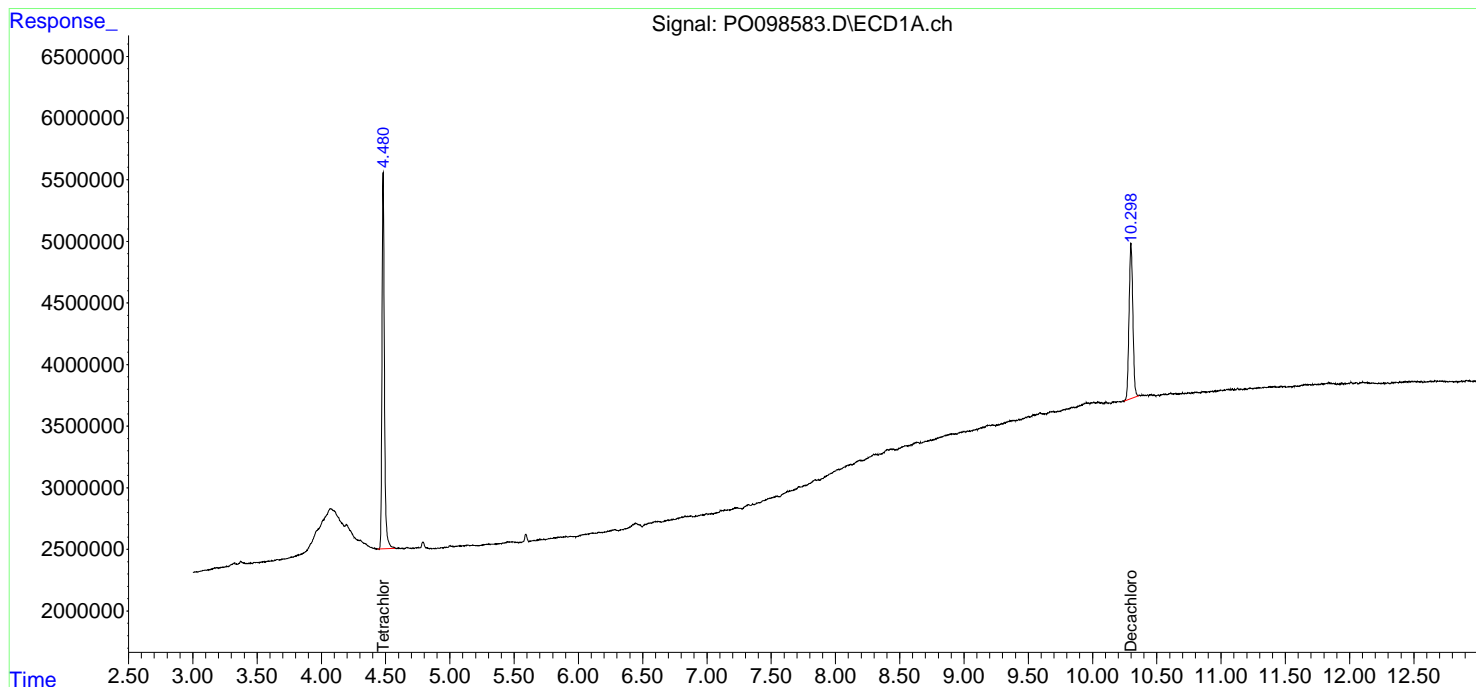
(f)=RT Delta > 1/2 Window (#)=Amounts differ by > 25% (m)=manual int.

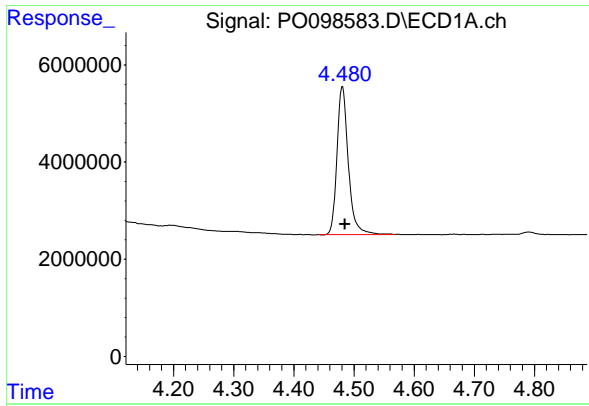
Data Path : Z:\pestpcbsrv\HPCHEM1\ECD_O\Data\PO100923\
 Data File : P0098583.D
 Signal(s) : Signal #1: ECD1A.ch Signal #2: ECD2B.ch
 Acq On : 09 Oct 2023 16:07
 Operator : YP/AJ
 Sample : I.BLK
 Misc :
 ALS Vial : 2 Sample Multiplier: 1

Instrument :
 ECD_O
 ClientSampleId :
 I.BLK

Integration File signal 1: autoint1.e
 Integration File signal 2: autoint2.e
 Quant Time: Oct 10 03:34:06 2023
 Quant Method : Z:\pestpcbsrv\HPCHEM1\ECD_O\methods\P0092723.M
 Quant Title : GC EXTRACTABLES
 QLast Update : Thu Sep 28 01:18:56 2023
 Response via : Initial Calibration
 Integrator: ChemStation

Volume Inj. : 2 µl
 Signal #1 Phase : ZB-MR1 Signal #2 Phase: ZB-MR2
 Signal #1 Info : 30Mx0.32mmx 0.50µ Signal #2 Info : 30M x 0.32mm x 0.25µm

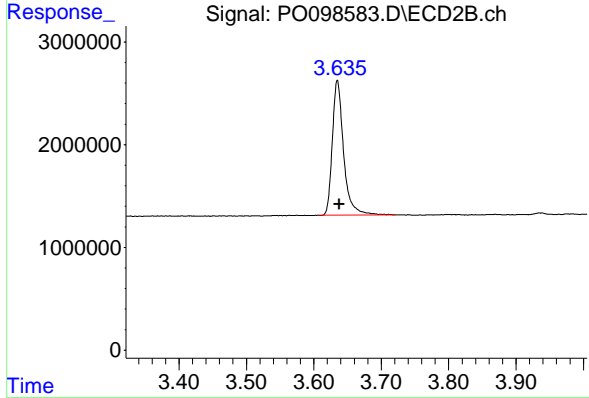




#1 Tetrachloro-m-xylene

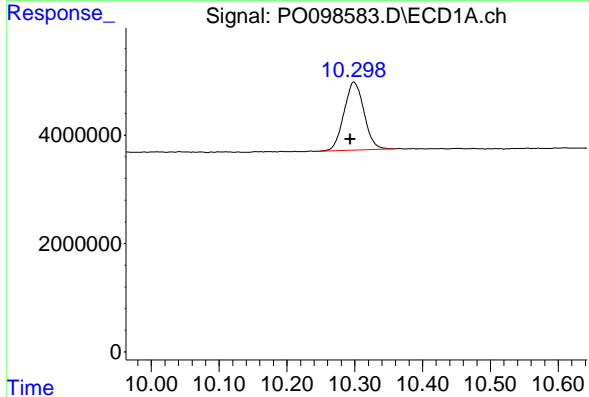
R.T.: 4.481 min
 Delta R.T.: -0.004 min
 Response: 40070493
 Conc: 20.87 ng/ml

Instrument :
 ECD_O
 ClientSampleId :
 I.BLK



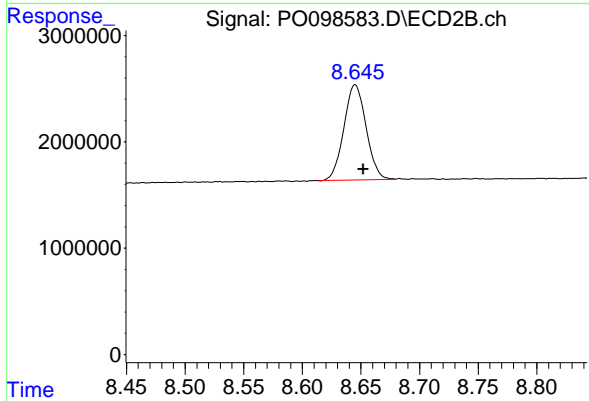
#1 Tetrachloro-m-xylene

R.T.: 3.635 min
 Delta R.T.: -0.003 min
 Response: 15257603
 Conc: 19.59 ng/ml



#2 Decachlorobiphenyl

R.T.: 10.299 min
 Delta R.T.: 0.005 min
 Response: 25874150
 Conc: 21.32 ng/ml



#2 Decachlorobiphenyl

R.T.: 8.645 min
 Delta R.T.: -0.007 min
 Response: 11866483
 Conc: 22.15 ng/ml m