

Data Path : Z:\pestpcbsrv\HPCHEM1\ECD_O\Data\P0100923\
 Data File : P0098592.D
 Signal(s) : Signal #1: ECD1A.ch Signal #2: ECD2B.ch
 Acq On : 09 Oct 2023 23:50
 Operator : YP/AJ
 Sample : 04699-01
 Misc : AR1232 LOD 25 PPB
 ALS Vial : 10 Sample Multiplier: 1

Instrument :
 ECD_O
ClientSampleId :
 LOD-MDL-SOIL-01-QT4-2023

Integration File signal 1: autoint1.e
 Integration File signal 2: autoint2.e
 Quant Time: Oct 10 05:08:10 2023
 Quant Method : Z:\pestpcbsrv\HPCHEM1\ECD_O\methods\P0092723.M
 Quant Title : GC EXTRACTABLES
 QLast Update : Thu Sep 28 01:18:56 2023
 Response via : Initial Calibration
 Integrator: ChemStation

Volume Inj. : 2 µl
 Signal #1 Phase : ZB-MR1 Signal #2 Phase: ZB-MR2
 Signal #1 Info : 30Mx0.32mmx 0.50µ Signal #2 Info : 30M x 0.32mm x 0.25µm

Compound	RT#1	RT#2	Resp#1	Resp#2	ng/ml	ng/ml

System Monitoring Compounds						
1) SA Tetrachlo...	4.481	3.633	42388095	16478982	22.075	21.158
2) SA Decachlor...	10.299	8.641	28214840	12849611	23.244	23.984m
Target Compounds						
11) L3 AR-1232-1	4.854	4.009	1150107	409542	28.156	24.366
12) L3 AR-1232-2	5.387	4.735	503124	316390	23.263	21.055
13) L3 AR-1232-3	5.679	4.913	897291	118411	25.241	15.129 #
14) L3 AR-1232-4	5.841	4.995	549550	162639	32.371	21.630 #
15) L3 AR-1232-5	5.932	5.166	296802	190989	20.846	23.609

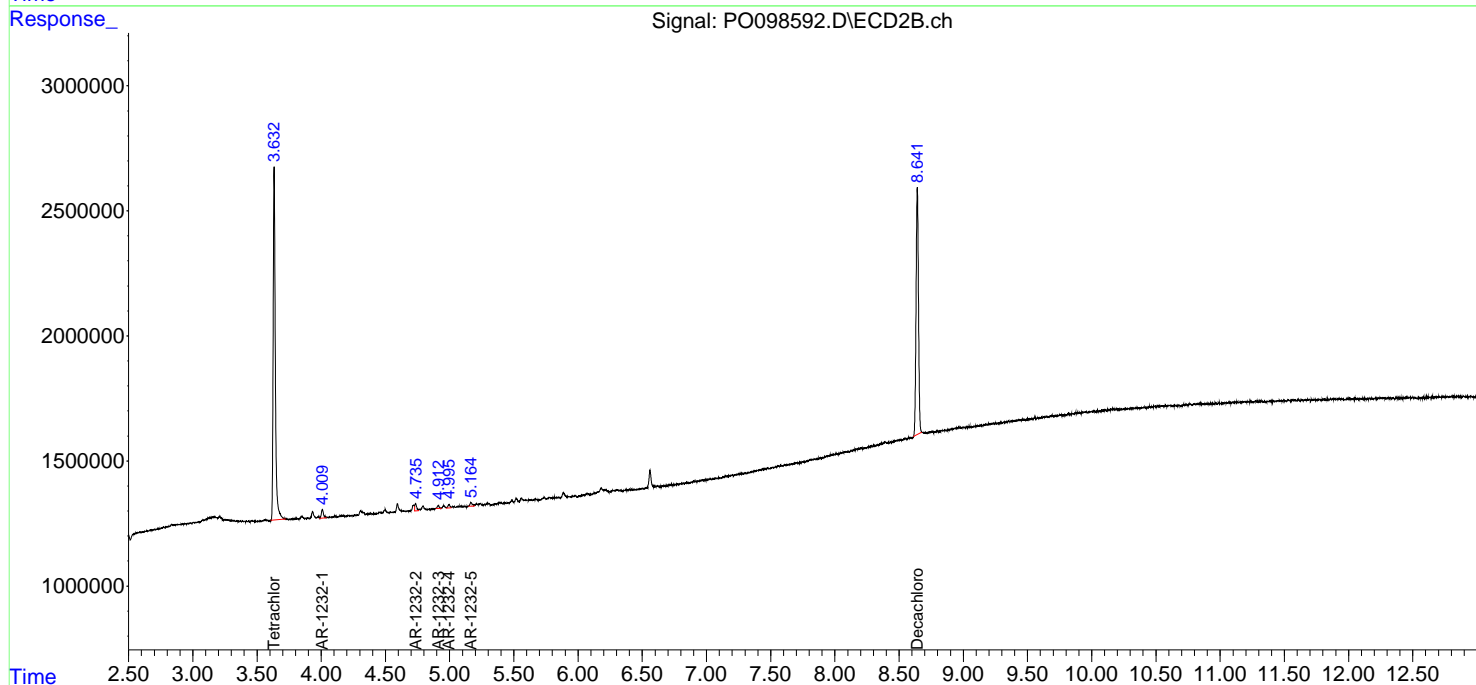
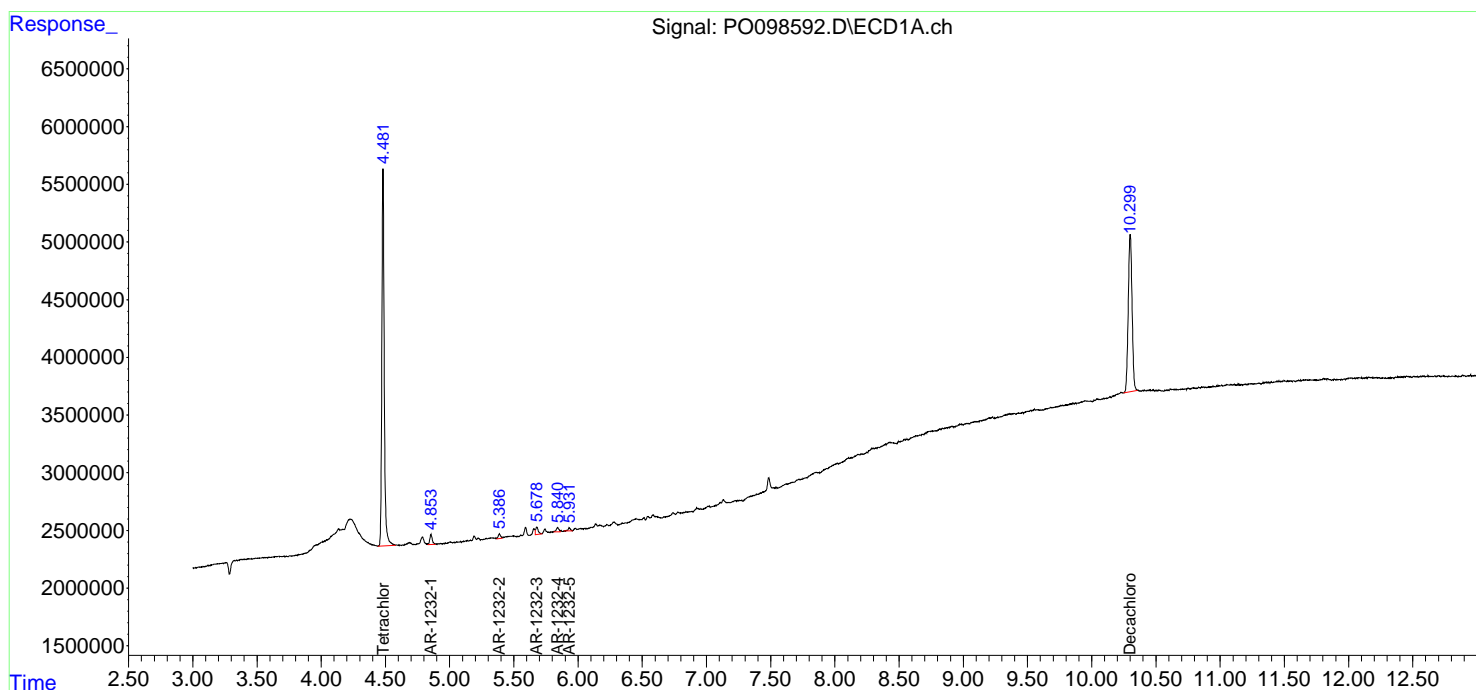
(f)=RT Delta > 1/2 Window (#)=Amounts differ by > 25% (m)=manual int.

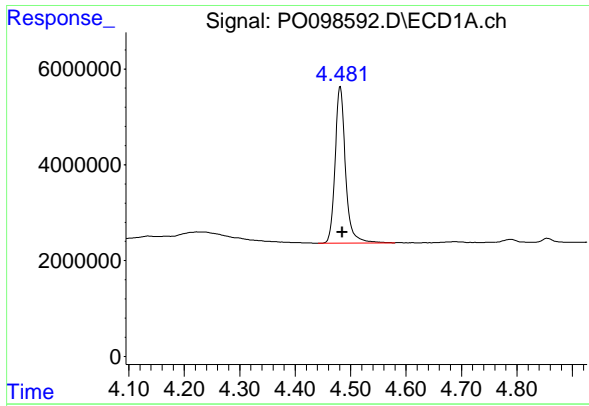
Data Path : Z:\pestpcbsrv\HPCHEM1\ECD_O\Data\PO100923\
 Data File : P0098592.D
 Signal(s) : Signal #1: ECD1A.ch Signal #2: ECD2B.ch
 Acq On : 09 Oct 2023 23:50
 Operator : YP/AJ
 Sample : 04699-01
 Misc : AR1232 LOD 25 PPB
 ALS Vial : 10 Sample Multiplier: 1

Instrument :
 ECD_O
 ClientSampleId :
 LOD-MDL-SOIL-01-QT4-2023

Integration File signal 1: autoint1.e
 Integration File signal 2: autoint2.e
 Quant Time: Oct 10 05:08:10 2023
 Quant Method : Z:\pestpcbsrv\HPCHEM1\ECD_O\methods\P0092723.M
 Quant Title : GC EXTRACTABLES
 QLast Update : Thu Sep 28 01:18:56 2023
 Response via : Initial Calibration
 Integrator: ChemStation

Volume Inj. : 2 µl
 Signal #1 Phase : ZB-MR1 Signal #2 Phase: ZB-MR2
 Signal #1 Info : 30Mx0.32mmx 0.50µ Signal #2 Info : 30M x 0.32mm x 0.25µm

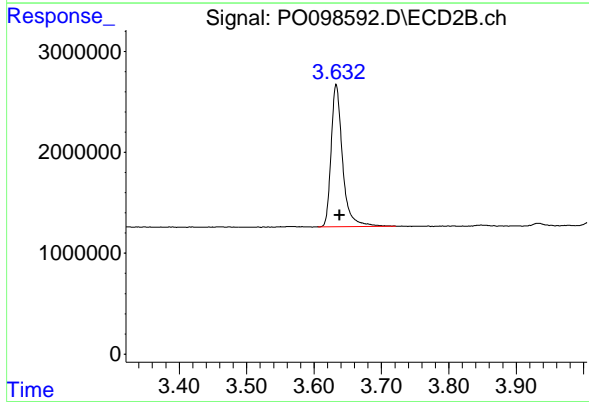




#1 Tetrachloro-m-xylene

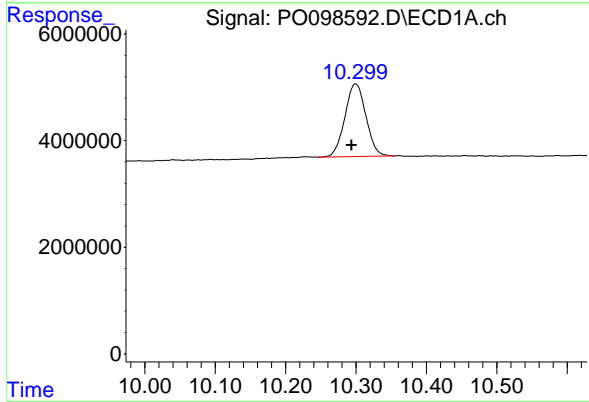
R.T.: 4.481 min
 Delta R.T.: -0.004 min
 Response: 42388095
 Conc: 22.08 ng/ml

Instrument :
 ECD_O
 ClientSampleId :
 LOD-MDL-SOIL-01-QT4-2023



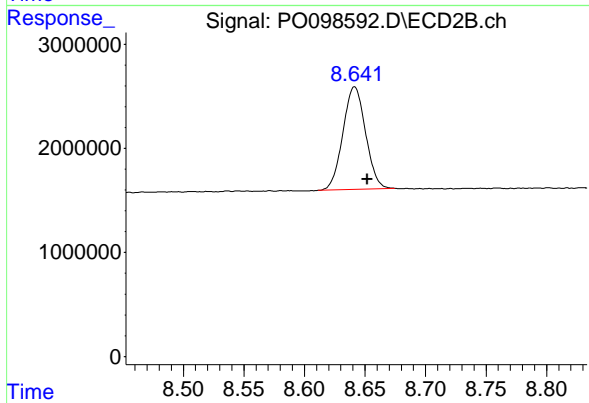
#1 Tetrachloro-m-xylene

R.T.: 3.633 min
 Delta R.T.: -0.005 min
 Response: 16478982
 Conc: 21.16 ng/ml



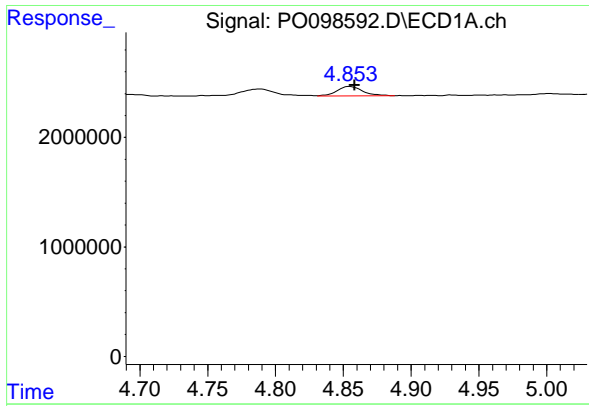
#2 Decachlorobiphenyl

R.T.: 10.299 min
 Delta R.T.: 0.006 min
 Response: 28214840
 Conc: 23.24 ng/ml



#2 Decachlorobiphenyl

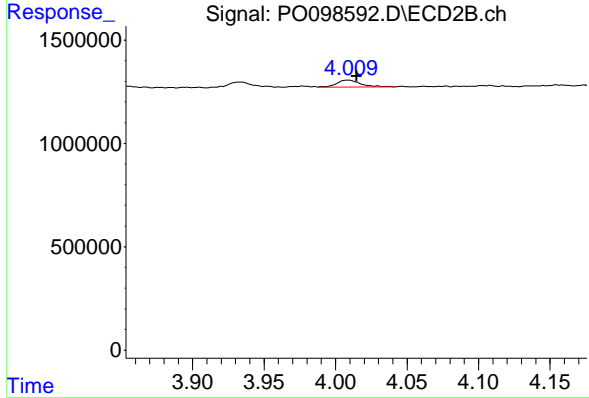
R.T.: 8.641 min
 Delta R.T.: -0.011 min
 Response: 12849611
 Conc: 23.98 ng/ml m



#11 AR-1232-1

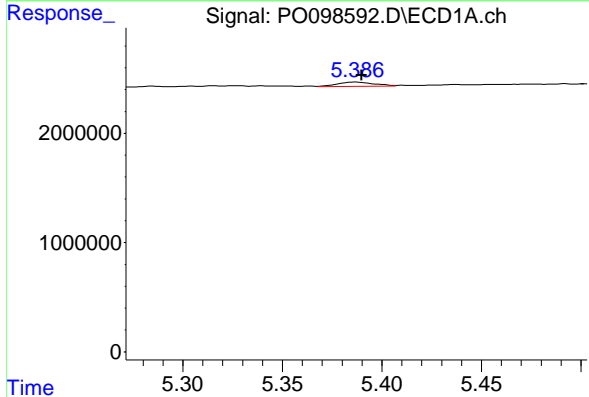
R.T.: 4.854 min
 Delta R.T.: -0.004 min
 Response: 1150107
 Conc: 28.16 ng/ml

Instrument :
 ECD_O
 ClientSampleId :
 LOD-MDL-SOIL-01-QT4-2023



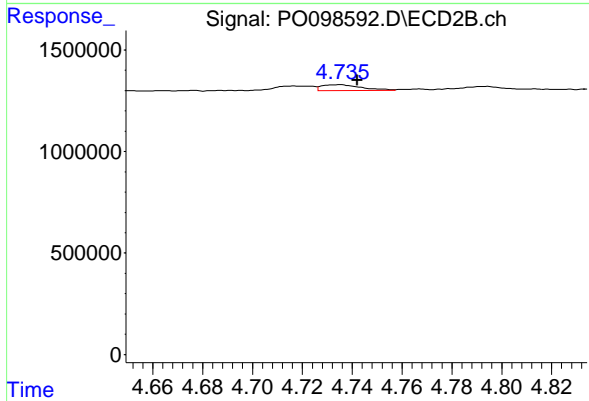
#11 AR-1232-1

R.T.: 4.009 min
 Delta R.T.: -0.006 min
 Response: 409542
 Conc: 24.37 ng/ml



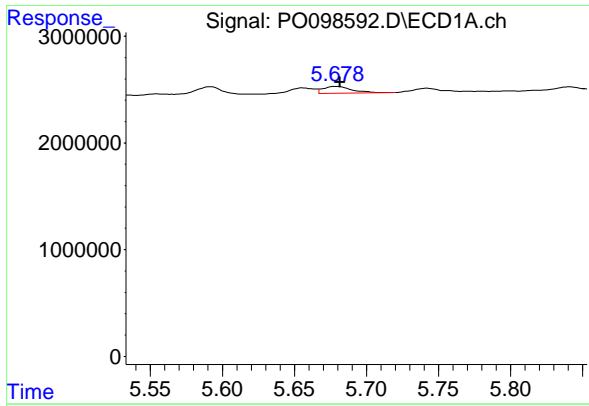
#12 AR-1232-2

R.T.: 5.387 min
 Delta R.T.: -0.003 min
 Response: 503124
 Conc: 23.26 ng/ml



#12 AR-1232-2

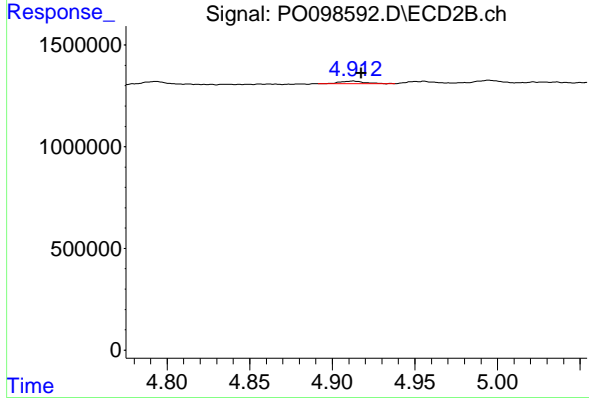
R.T.: 4.735 min
 Delta R.T.: -0.008 min
 Response: 316390
 Conc: 21.06 ng/ml



#13 AR-1232-3

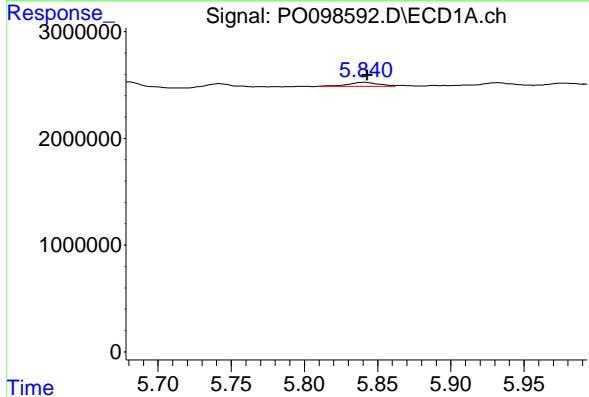
R.T.: 5.679 min
 Delta R.T.: -0.002 min
 Response: 897291
 Conc: 25.24 ng/ml

Instrument :
 ECD_O
 ClientSampleId :
 LOD-MDL-SOIL-01-QT4-2023



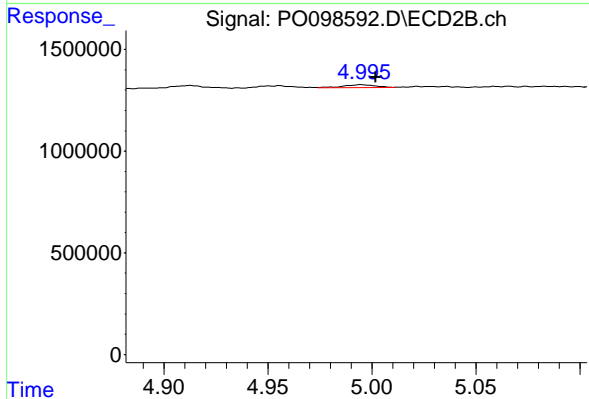
#13 AR-1232-3

R.T.: 4.913 min
 Delta R.T.: -0.005 min
 Response: 118411
 Conc: 15.13 ng/ml



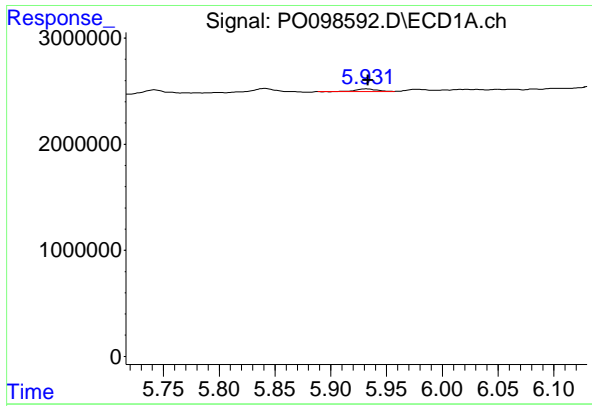
#14 AR-1232-4

R.T.: 5.841 min
 Delta R.T.: -0.002 min
 Response: 549550
 Conc: 32.37 ng/ml



#14 AR-1232-4

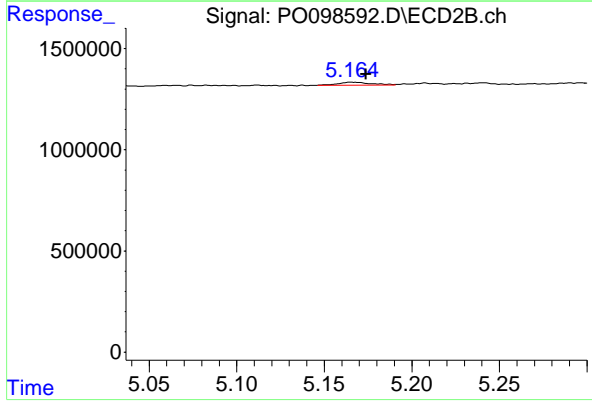
R.T.: 4.995 min
 Delta R.T.: -0.007 min
 Response: 162639
 Conc: 21.63 ng/ml



#15 AR-1232-5

R.T.: 5.932 min
Delta R.T.: -0.002 min
Response: 296802
Conc: 20.85 ng/ml

Instrument :
ECD_O
ClientSampleId :
LOD-MDL-SOIL-01-QT4-2023



#15 AR-1232-5

R.T.: 5.166 min
Delta R.T.: -0.008 min
Response: 190989
Conc: 23.61 ng/ml