

Data Path : Z:\pestpcbsrv\HPCHEM1\ECD_0\Data\P0100923\
 Data File : P0098595.D
 Signal(s) : Signal #1: ECD1A.ch Signal #2: ECD2B.ch
 Acq On : 10 Oct 2023 00:41
 Operator : YP/AJ
 Sample : 04699-01
 Misc : AR1660 LOD 40 PPB
 ALS Vial : 25 Sample Multiplier: 1

Instrument :
 ECD_0
ClientSampleId :
 LOD-MDL-SOIL-01-QT4-2023

Manual Integrations
APPROVED
 Reviewed By :Yogesh Patel 10/10/2023
 Supervised By :Ankita Jodhani 10/10/2023

Integration File signal 1: autoint1.e
 Integration File signal 2: autoint2.e
 Quant Time: Oct 10 05:12:01 2023
 Quant Method : Z:\pestpcbsrv\HPCHEM1\ECD_0\methods\P0092723.M
 Quant Title : GC EXTRACTABLES
 QLast Update : Thu Sep 28 01:18:56 2023
 Response via : Initial Calibration
 Integrator: ChemStation

Volume Inj. : 2 µl
 Signal #1 Phase : ZB-MR1 Signal #2 Phase: ZB-MR2
 Signal #1 Info : 30Mx0.32mmx 0.50µ Signal #2 Info : 30M x 0.32mm x 0.25µm

Compound	RT#1	RT#2	Resp#1	Resp#2	ng/ml	ng/ml

System Monitoring Compounds						
1) SA Tetrachlo...	4.480	3.634	44930739	17089643	23.399	21.942
2) SA Decachlor...	10.292	8.642	29772501	13748888	24.527	25.662m
Target Compounds						
3) L1 AR-1016-1	5.656	4.718	2968687	1142962	54.931	47.886
4) L1 AR-1016-2	5.679	4.736	4312040	1618741	53.112	47.539
5) L1 AR-1016-3	5.741	4.912	2764889	781372	55.261	43.437
6) L1 AR-1016-4	5.840	4.954	2185187	693391	55.885	46.253
7) L1 AR-1016-5	6.135	5.167	2046821	931378	49.776	47.959
31) L7 AR-1260-1	7.266	6.202	3725098	2077385	51.229	56.619
32) L7 AR-1260-2	7.524	6.391	4488526	2430250	54.512	57.918
33) L7 AR-1260-3	7.884	6.544	3252110	2191255	52.570	54.758m
34) L7 AR-1260-4	8.111	7.017	4369497	1753423	64.817	54.449
35) L7 AR-1260-5	8.436	7.259	8118641	3761592	62.490	53.691

(f)=RT Delta > 1/2 Window (#)=Amounts differ by > 25% (m)=manual int.

Data Path : Z:\pestpcbsrv\HPCHEM1\ECD_O\Data\PO100923\
 Data File : P0098595.D
 Signal(s) : Signal #1: ECD1A.ch Signal #2: ECD2B.ch
 Acq On : 10 Oct 2023 00:41
 Operator : YP/AJ
 Sample : 04699-01
 Misc : AR1660 LOD 40 PPB
 ALS Vial : 25 Sample Multiplier: 1

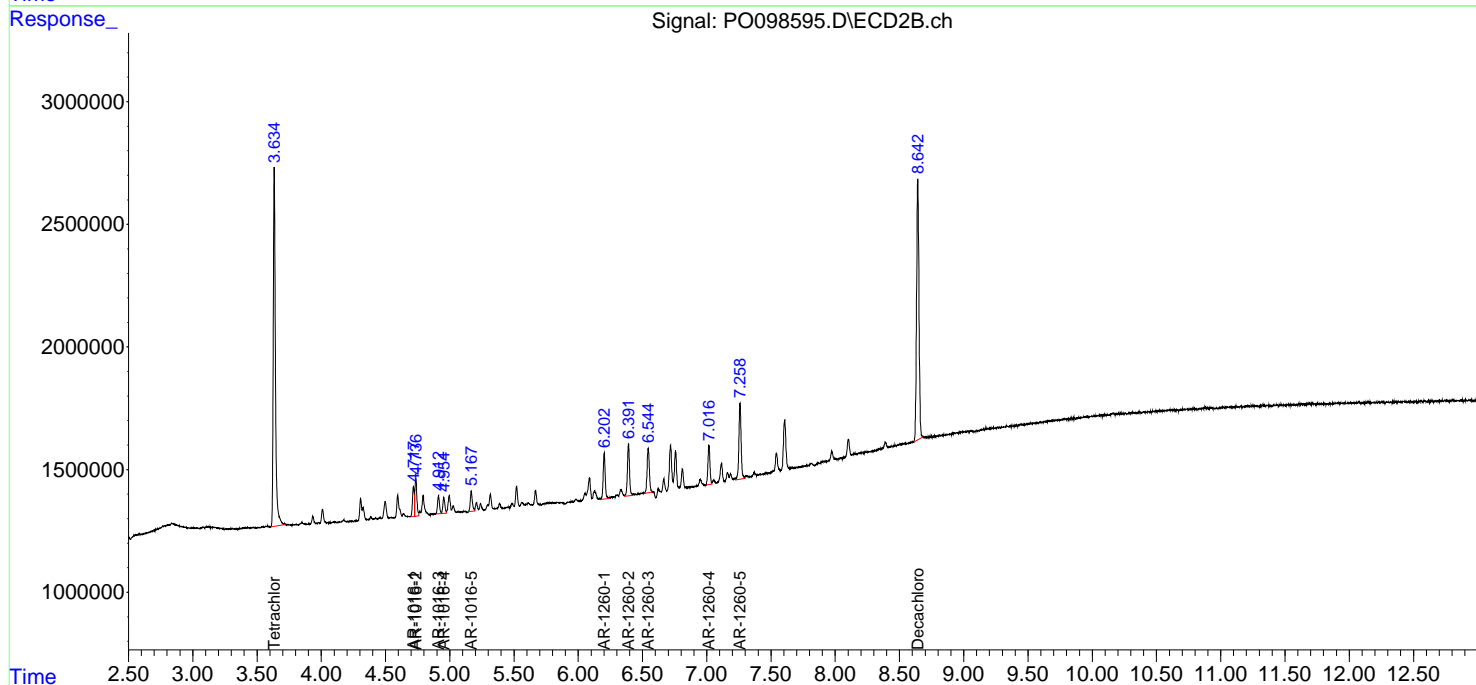
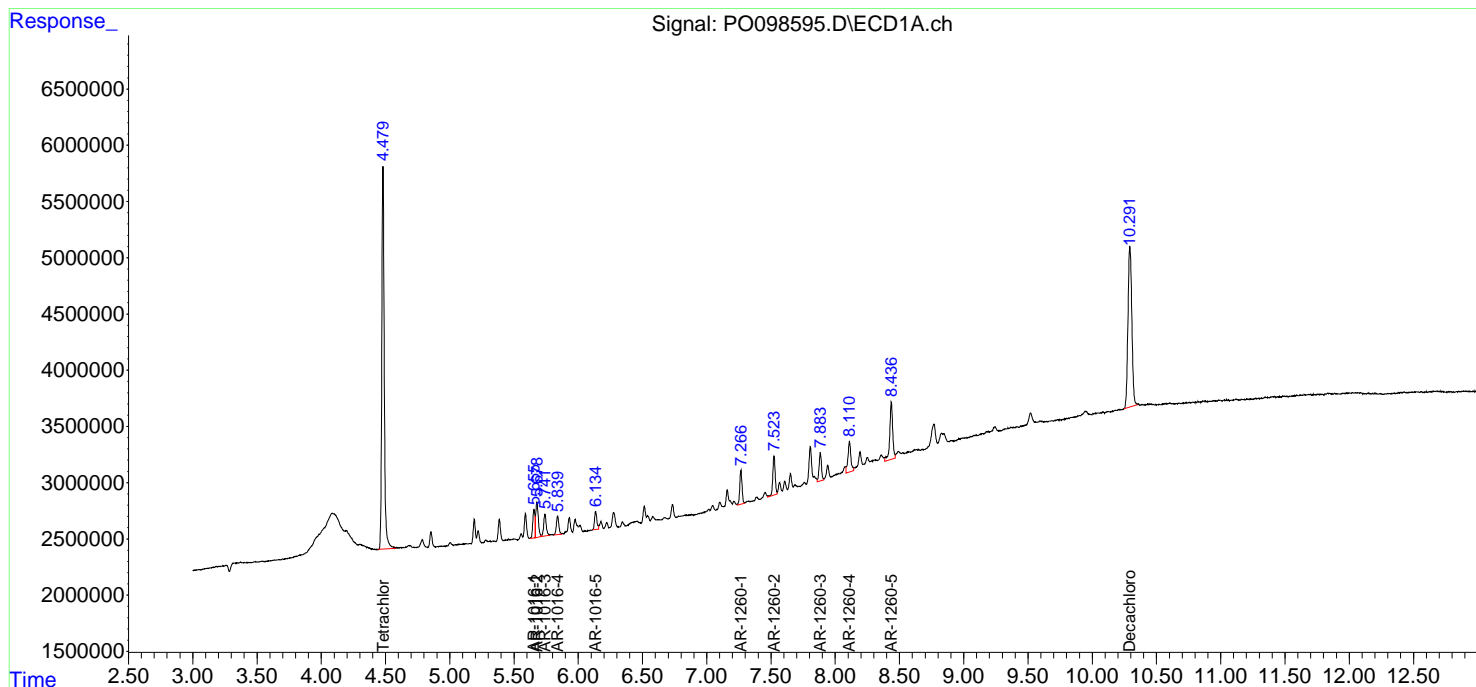
Instrument :
 ECD_O
 ClientSampleId :
 LOD-MDL-SOIL-01-QT4-2023

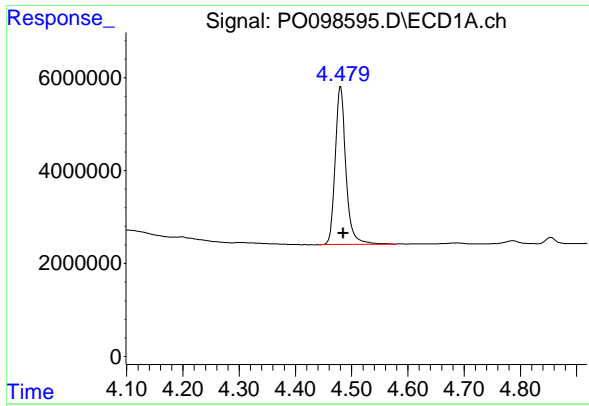
Manual Integrations
 APPROVED

Reviewed By :Yogesh Patel 10/10/2023
 Supervised By :Ankita Jodhani 10/10/2023

Integration File signal 1: autoint1.e
 Integration File signal 2: autoint2.e
 Quant Time: Oct 10 05:12:01 2023
 Quant Method : Z:\pestpcbsrv\HPCHEM1\ECD_O\methods\P0092723.M
 Quant Title : GC EXTRACTABLES
 QLast Update : Thu Sep 28 01:18:56 2023
 Response via : Initial Calibration
 Integrator: ChemStation

Volume Inj. : 2 µl
 Signal #1 Phase : ZB-MR1 Signal #2 Phase: ZB-MR2
 Signal #1 Info : 30Mx0.32mmx 0.50µm Signal #2 Info : 30M x 0.32mm x 0.25µm





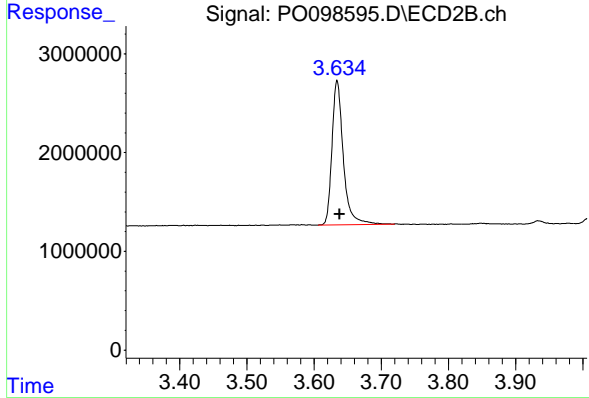
#1 Tetrachloro-m-xylene

R.T.: 4.480 min
 Delta R.T.: -0.005 min
 Response: 44930739
 Conc: 23.40 ng/ml

Instrument :
 ECD_O
 ClientSampleId :
 LOD-MDL-SOIL-01-QT4-2023

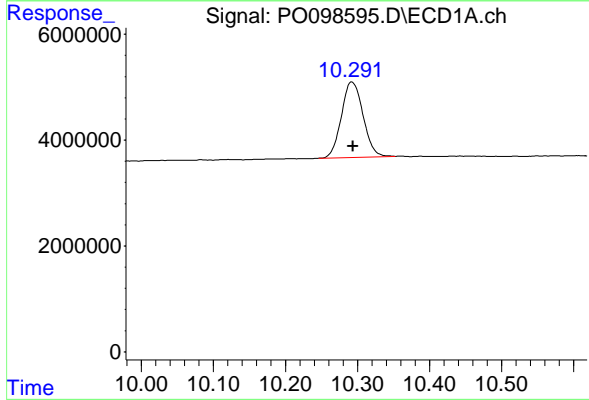
Manual Integrations
 APPROVED

Reviewed By :Yogesh Patel 10/10/2023
 Supervised By :Ankita Jodhani 10/10/2023



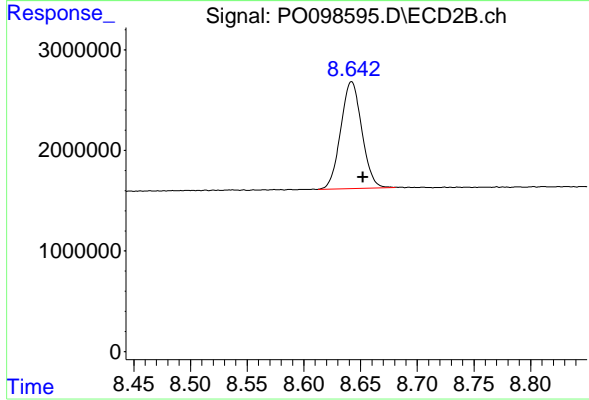
#1 Tetrachloro-m-xylene

R.T.: 3.634 min
 Delta R.T.: -0.003 min
 Response: 17089643
 Conc: 21.94 ng/ml



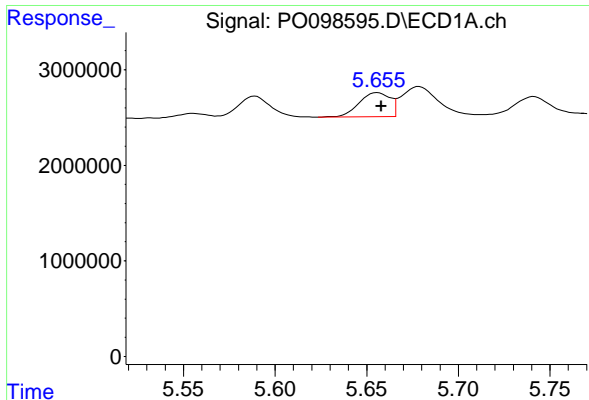
#2 Decachlorobiphenyl

R.T.: 10.292 min
 Delta R.T.: -0.002 min
 Response: 29772501
 Conc: 24.53 ng/ml



#2 Decachlorobiphenyl

R.T.: 8.642 min
 Delta R.T.: -0.010 min
 Response: 13748888
 Conc: 25.66 ng/ml m



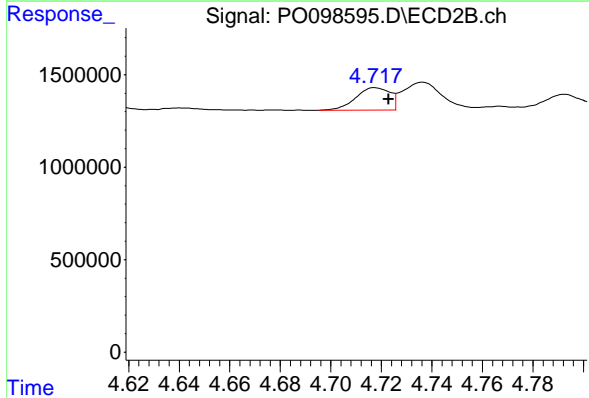
#3 AR-1016-1

R.T.: 5.656 min
 Delta R.T.: -0.002 min
 Response: 2968687
 Conc: 54.93 ng/ml

Instrument : ECD_O
 ClientSampleId : LOD-MDL-SOIL-01-QT4-2023

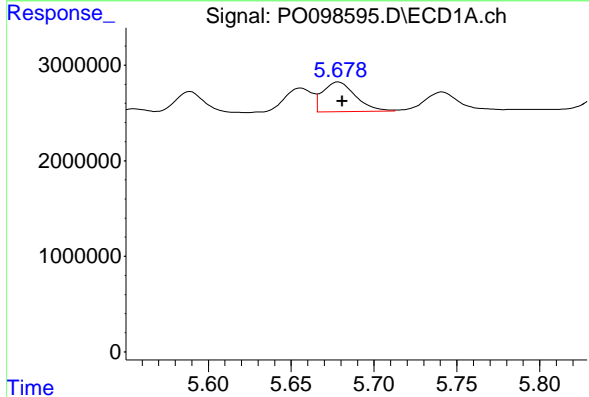
Manual Integrations
 APPROVED

Reviewed By :Yogesh Patel 10/10/2023
 Supervised By :Ankita Jodhani 10/10/2023



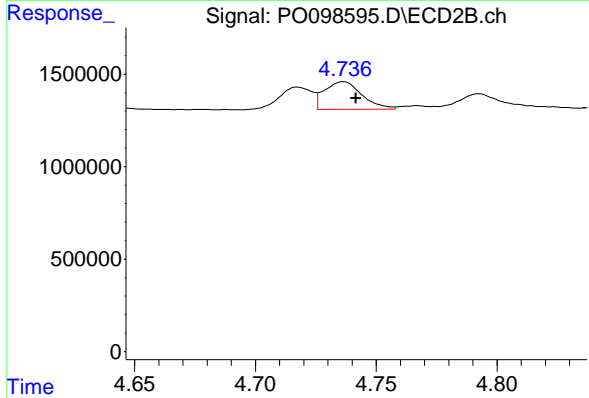
#3 AR-1016-1

R.T.: 4.718 min
 Delta R.T.: -0.005 min
 Response: 1142962
 Conc: 47.89 ng/ml



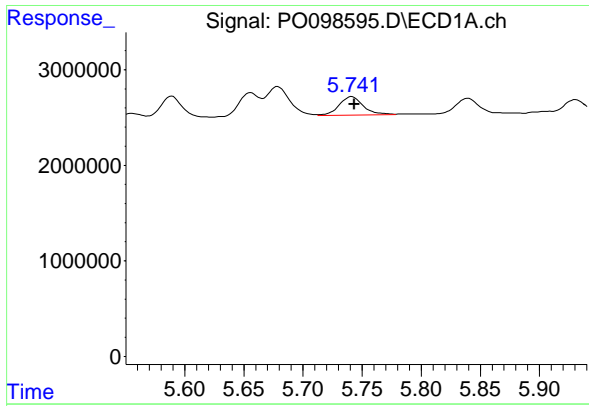
#4 AR-1016-2

R.T.: 5.679 min
 Delta R.T.: -0.002 min
 Response: 4312040
 Conc: 53.11 ng/ml



#4 AR-1016-2

R.T.: 4.736 min
 Delta R.T.: -0.005 min
 Response: 1618741
 Conc: 47.54 ng/ml



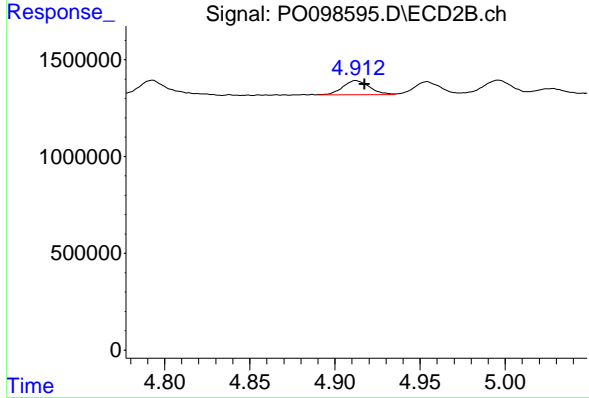
#5 AR-1016-3

R.T.: 5.741 min
 Delta R.T.: -0.002 min
 Response: 2764889
 Conc: 55.26 ng/ml

Instrument :
 ECD_O
 ClientSampleId :
 LOD-MDL-SOIL-01-QT4-2023

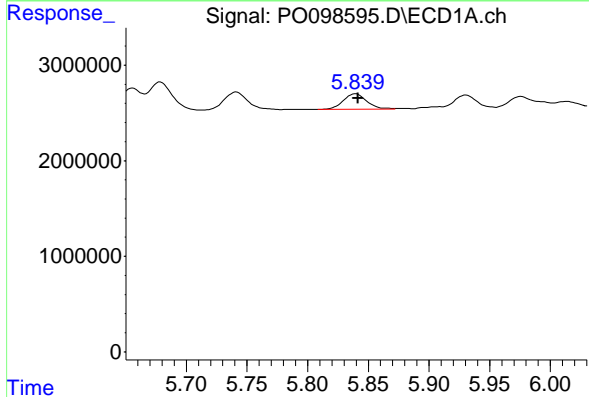
Manual Integrations
 APPROVED

Reviewed By :Yogesh Patel 10/10/2023
 Supervised By :Ankita Jodhani 10/10/2023



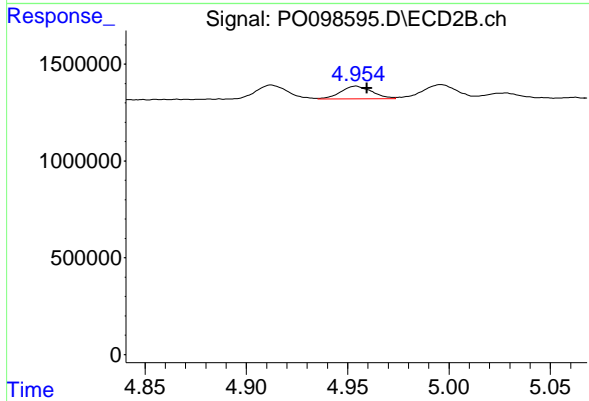
#5 AR-1016-3

R.T.: 4.912 min
 Delta R.T.: -0.005 min
 Response: 781372
 Conc: 43.44 ng/ml



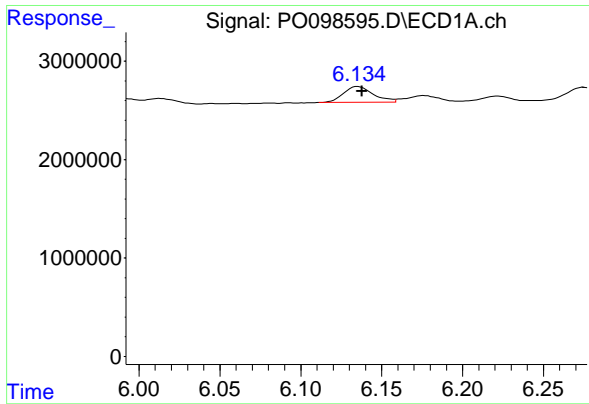
#6 AR-1016-4

R.T.: 5.840 min
 Delta R.T.: -0.002 min
 Response: 2185187
 Conc: 55.88 ng/ml



#6 AR-1016-4

R.T.: 4.954 min
 Delta R.T.: -0.006 min
 Response: 693391
 Conc: 46.25 ng/ml



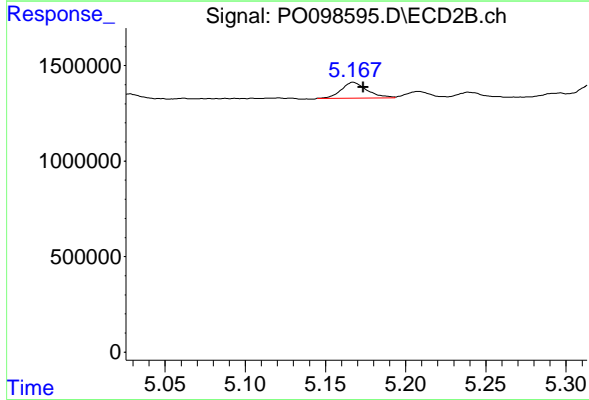
#7 AR-1016-5

R.T.: 6.135 min
 Delta R.T.: -0.003 min
 Response: 2046821
 Conc: 49.78 ng/ml

Instrument : ECD_O
 ClientSampleId : LOD-MDL-SOIL-01-QT4-2023

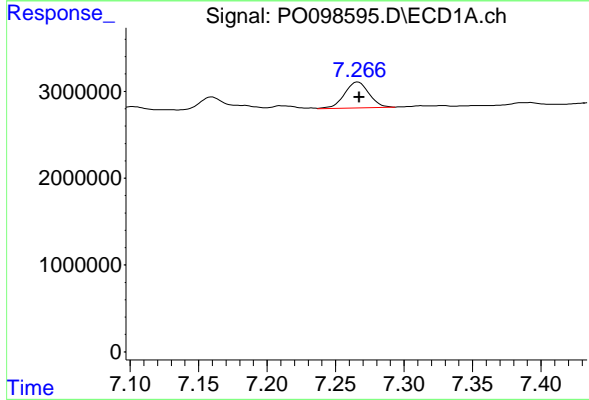
Manual Integrations
 APPROVED

Reviewed By :Yogesh Patel 10/10/2023
 Supervised By :Ankita Jodhani 10/10/2023



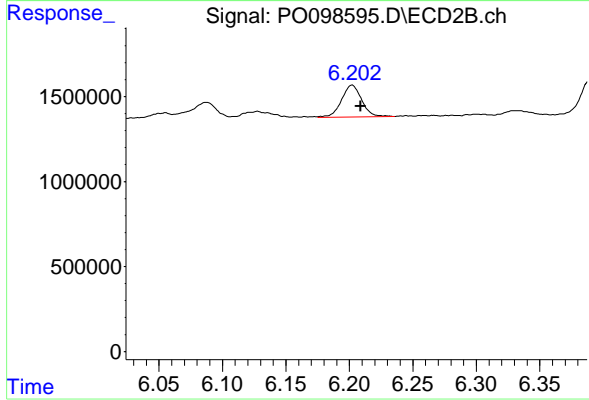
#7 AR-1016-5

R.T.: 5.167 min
 Delta R.T.: -0.006 min
 Response: 931378
 Conc: 47.96 ng/ml



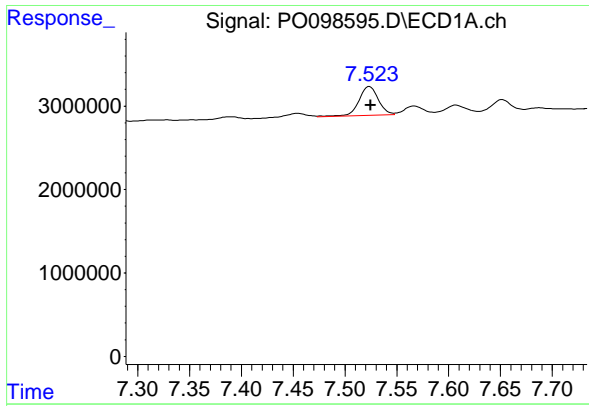
#31 AR-1260-1

R.T.: 7.266 min
 Delta R.T.: -0.001 min
 Response: 3725098
 Conc: 51.23 ng/ml



#31 AR-1260-1

R.T.: 6.202 min
 Delta R.T.: -0.007 min
 Response: 2077385
 Conc: 56.62 ng/ml



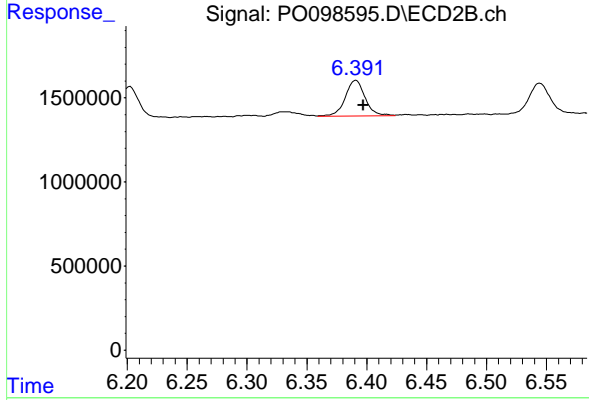
#32 AR-1260-2

R.T.: 7.524 min
 Delta R.T.: -0.001 min
 Response: 4488526
 Conc: 54.51 ng/ml

Instrument :
 ECD_O
 ClientSampleId :
 LOD-MDL-SOIL-01-QT4-2023

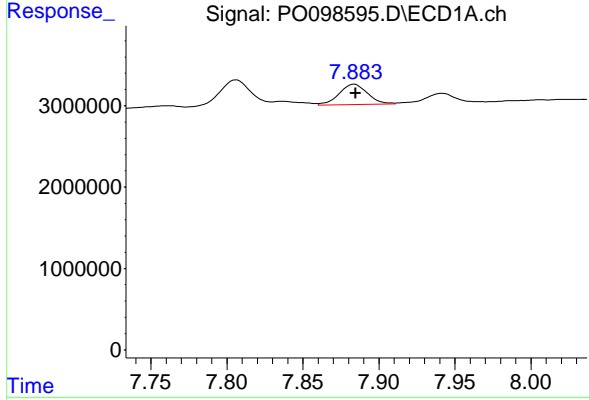
Manual Integrations
 APPROVED

Reviewed By :Yogesh Patel 10/10/2023
 Supervised By :Ankita Jodhani 10/10/2023



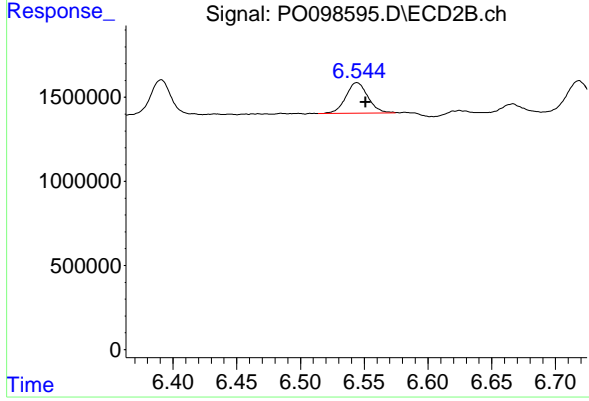
#32 AR-1260-2

R.T.: 6.391 min
 Delta R.T.: -0.006 min
 Response: 2430250
 Conc: 57.92 ng/ml



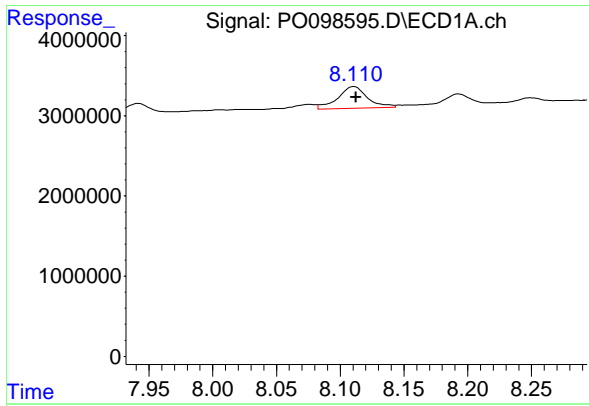
#33 AR-1260-3

R.T.: 7.884 min
 Delta R.T.: 0.000 min
 Response: 3252110
 Conc: 52.57 ng/ml



#33 AR-1260-3

R.T.: 6.544 min
 Delta R.T.: -0.007 min
 Response: 2191255
 Conc: 54.76 ng/ml m



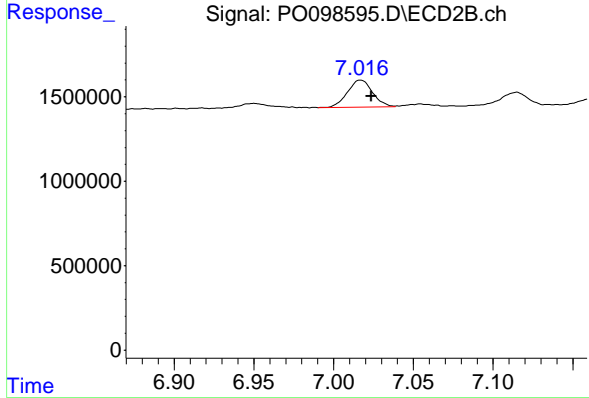
#34 AR-1260-4

R.T.: 8.111 min
 Delta R.T.: -0.002 min
 Response: 4369497
 Conc: 64.82 ng/ml

Instrument : ECD_O
 ClientSampleId : LOD-MDL-SOIL-01-QT4-2023

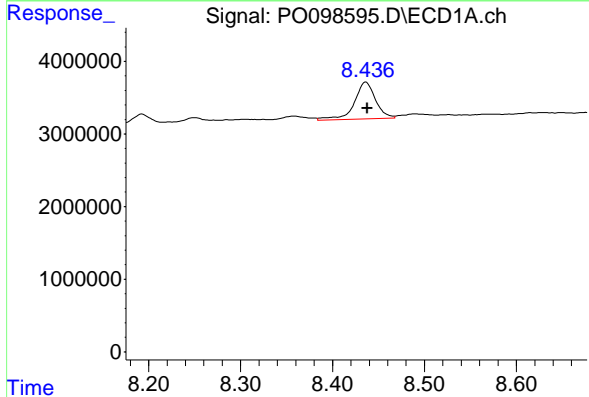
Manual Integrations
 APPROVED

Reviewed By :Yogesh Patel 10/10/2023
 Supervised By :Ankita Jodhani 10/10/2023



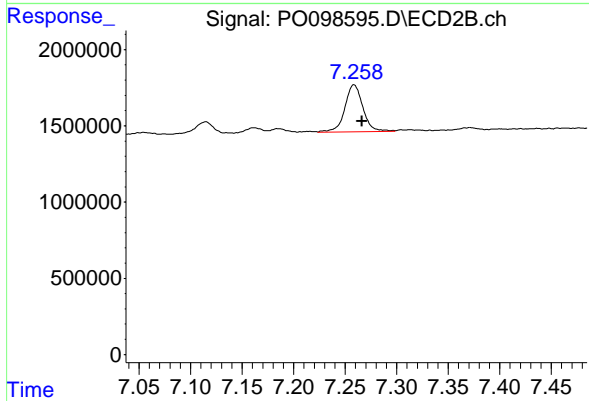
#34 AR-1260-4

R.T.: 7.017 min
 Delta R.T.: -0.007 min
 Response: 1753423
 Conc: 54.45 ng/ml



#35 AR-1260-5

R.T.: 8.436 min
 Delta R.T.: -0.001 min
 Response: 8118641
 Conc: 62.49 ng/ml



#35 AR-1260-5

R.T.: 7.259 min
 Delta R.T.: -0.008 min
 Response: 3761592
 Conc: 53.69 ng/ml