

Data Path : Z:\pestpcbsrv\HPCHEM1\ECD_O\Data\P0100924\
 Data File : P0107033.D
 Signal(s) : Signal #1: ECD1A.ch Signal #2: ECD2B.ch
 Acq On : 09 Oct 2024 14:58
 Operator : YP/AJ
 Sample : P4355-01
 Misc :
 ALS Vial : 16 Sample Multiplier: 1

Instrument :
 ECD_O
 ClientSampleId :
 PIPE-11

Integration File signal 1: autoint1.e
 Integration File signal 2: autoint2.e
 Quant Time: Oct 10 02:40:26 2024
 Quant Method : Z:\pestpcbsrv\HPCHEM1\ECD_O\methods\P0100824.M
 Quant Title : GC EXTRACTABLES
 QLast Update : Wed Oct 09 04:48:43 2024
 Response via : Initial Calibration
 Integrator: ChemStation

Volume Inj. : 2 µl
 Signal #1 Phase : ZB-MR1 Signal #2 Phase: ZB-MR2
 Signal #1 Info : 30Mx0.32mmx 0.50µ Signal #2 Info : 30M x 0.32mm x 0.25µm

| Compound | RT#1 | RT#2 | Resp#1 | Resp#2 | ng/ml | ng/ml |
|-----------------------------|--------|-------|----------|----------|----------|----------|
| ----- | | | | | | |
| System Monitoring Compounds | | | | | | |
| 1) SA Tetrachlo... | 4.374 | 3.646 | 235.3E6 | 80062195 | 19.615 | 20.073 |
| 2) SA Decachlor... | 10.053 | 8.644 | 53323417 | 51037354 | 21.311 | 18.182 |
| Target Compounds | | | | | | |
| 16) L4 AR-1242-1 | 5.522 | 4.729 | 331.7E6 | 118.8E6 | 1304.786 | 1332.954 |
| 17) L4 AR-1242-2 | 5.545 | 4.748 | 564.3E6 | 198.1E6 | 1546.559 | 1618.710 |
| 18) L4 AR-1242-3 | 5.607 | 4.923 | 314.7E6 | 100.8E6 | 1378.968 | 1499.587 |
| 19) L4 AR-1242-4 | 5.704 | 5.007 | 285.4E6 | 94443004 | 1561.256 | 1387.922 |
| 20) L4 AR-1242-5 | 6.437 | 5.529 | 283.1E6 | 139.5E6 | 1855.538 | 1734.443 |
| ----- | | | | | | |

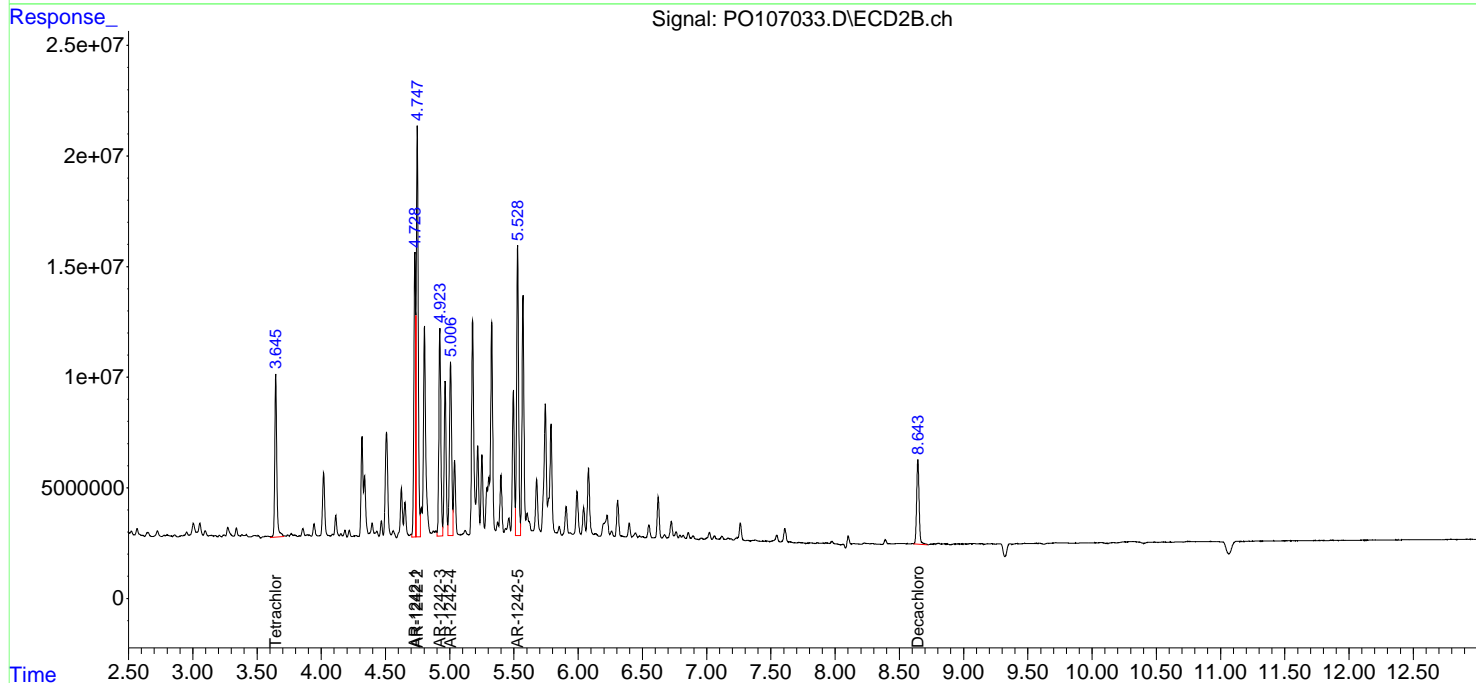
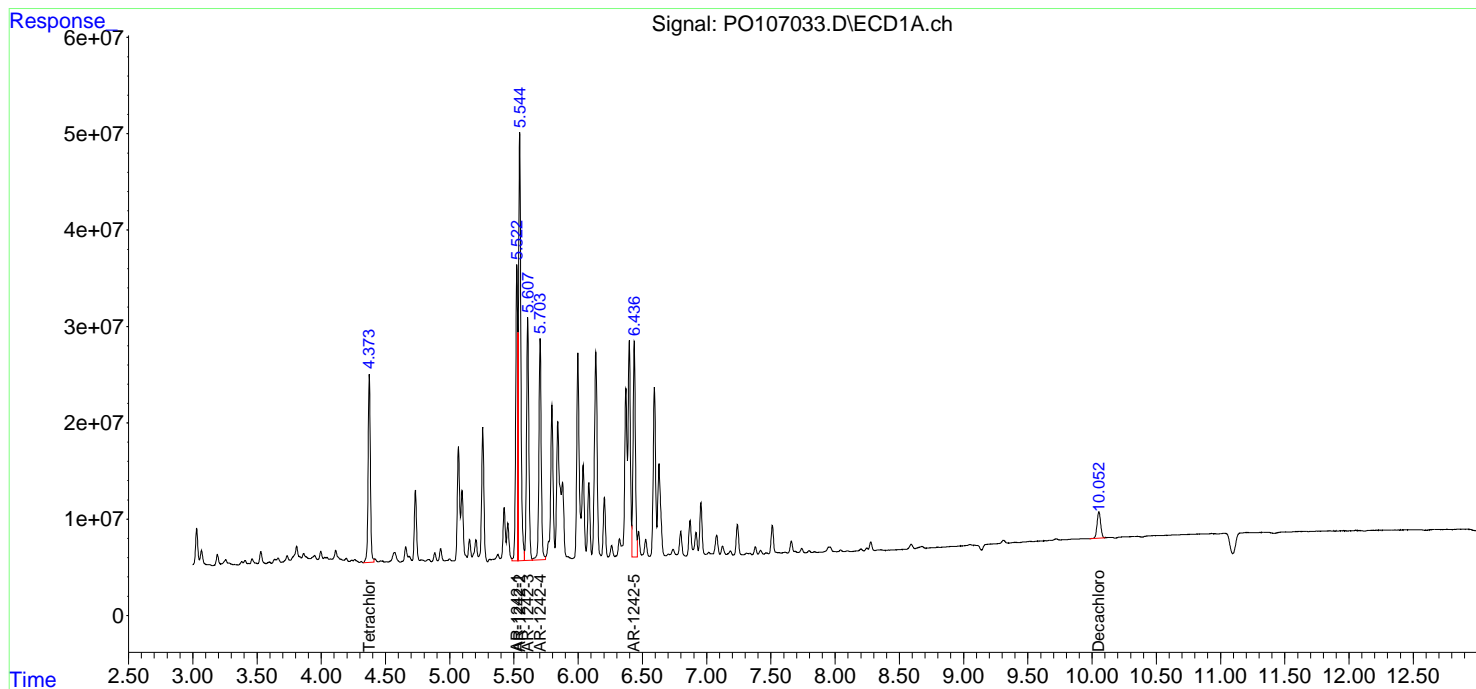
(f)=RT Delta > 1/2 Window (#)=Amounts differ by > 25% (m)=manual int.

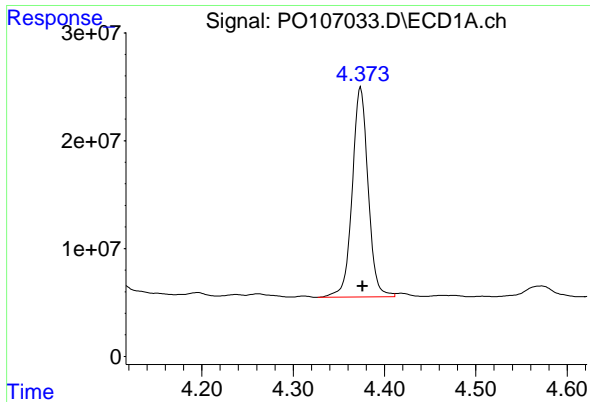
Data Path : Z:\pestpcbsrv\HPCHEM1\ECD_O\Data\PO100924\
 Data File : PO107033.D
 Signal(s) : Signal #1: ECD1A.ch Signal #2: ECD2B.ch
 Acq On : 09 Oct 2024 14:58
 Operator : YP/AJ
 Sample : P4355-01
 Misc :
 ALS Vial : 16 Sample Multiplier: 1

Instrument :
 ECD_O
 ClientSampleId :
 PIPE-11

Integration File signal 1: autoint1.e
 Integration File signal 2: autoint2.e
 Quant Time: Oct 10 02:40:26 2024
 Quant Method : Z:\pestpcbsrv\HPCHEM1\ECD_O\methods\PO100824.M
 Quant Title : GC EXTRACTABLES
 QLast Update : Wed Oct 09 04:48:43 2024
 Response via : Initial Calibration
 Integrator: ChemStation

Volume Inj. : 2 µl
 Signal #1 Phase : ZB-MR1 Signal #2 Phase: ZB-MR2
 Signal #1 Info : 30Mx0.32mmx 0.50µm Signal #2 Info : 30M x 0.32mm x 0.25µm

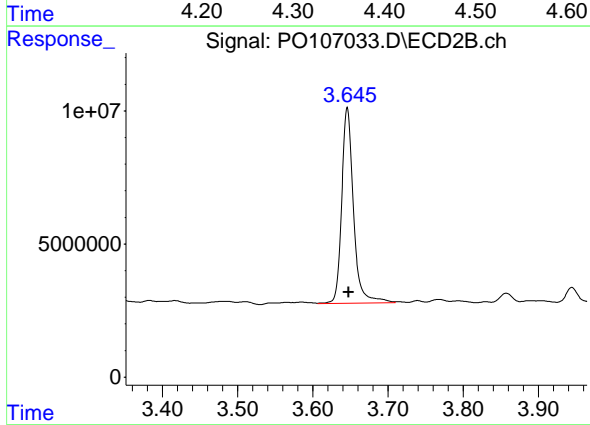




#1 Tetrachloro-m-xylene

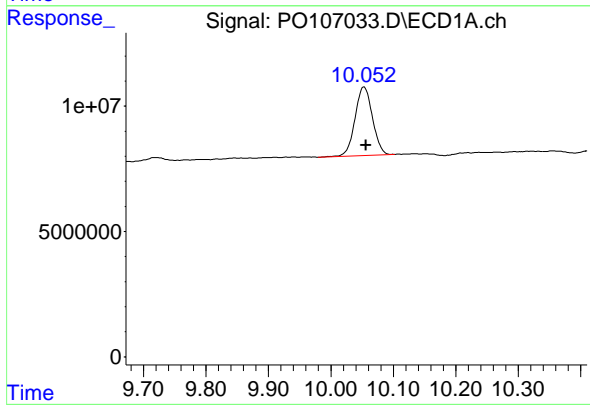
R.T.: 4.374 min
 Delta R.T.: -0.002 min
 Response: 235310633
 Conc: 19.62 ng/ml

Instrument :
 ECD_O
 ClientSampleId :
 PIPE-11



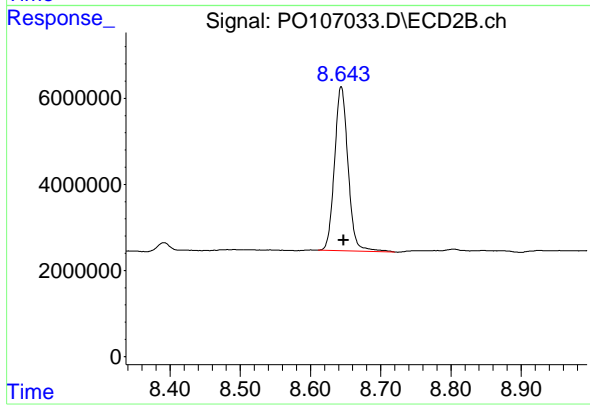
#1 Tetrachloro-m-xylene

R.T.: 3.646 min
 Delta R.T.: -0.002 min
 Response: 80062195
 Conc: 20.07 ng/ml



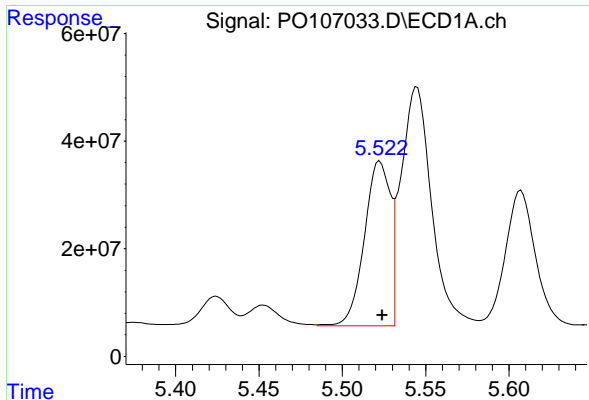
#2 Decachlorobiphenyl

R.T.: 10.053 min
 Delta R.T.: -0.003 min
 Response: 53323417
 Conc: 21.31 ng/ml



#2 Decachlorobiphenyl

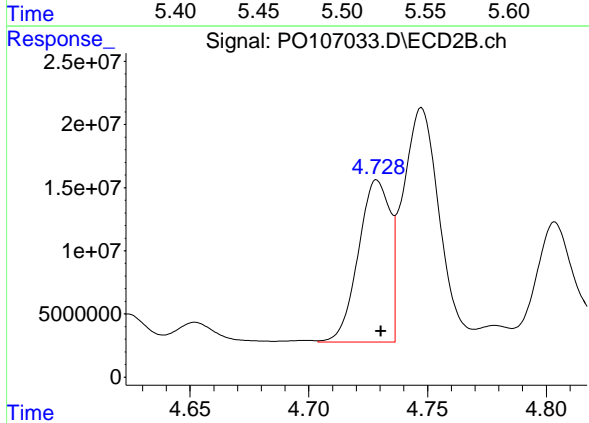
R.T.: 8.644 min
 Delta R.T.: -0.003 min
 Response: 51037354
 Conc: 18.18 ng/ml



#16 AR-1242-1

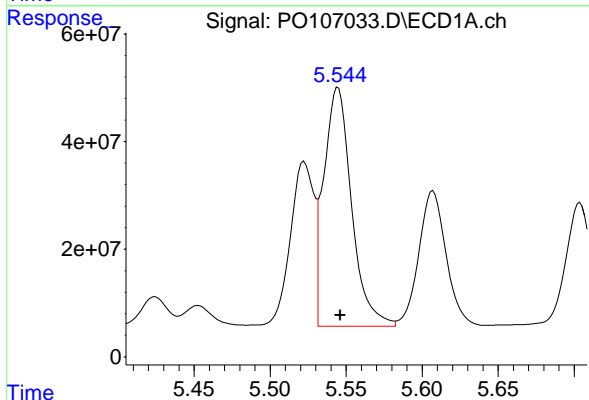
R.T.: 5.522 min
 Delta R.T.: -0.002 min
 Response: 331695196
 Conc: 1304.79 ng/ml

Instrument :
 ECD_O
 ClientSampleId :
 PIPE-11



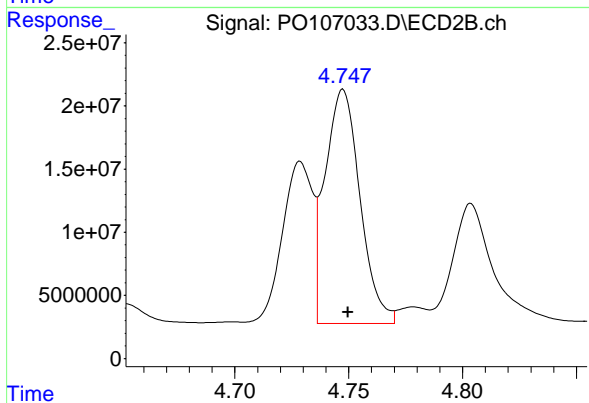
#16 AR-1242-1

R.T.: 4.729 min
 Delta R.T.: -0.002 min
 Response: 118829409
 Conc: 1332.95 ng/ml



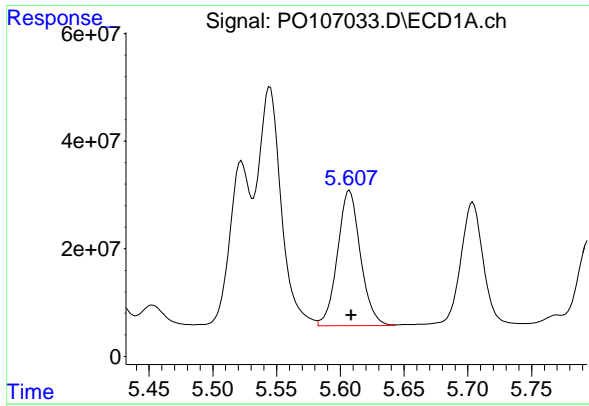
#17 AR-1242-2

R.T.: 5.545 min
 Delta R.T.: -0.002 min
 Response: 564302082
 Conc: 1546.56 ng/ml



#17 AR-1242-2

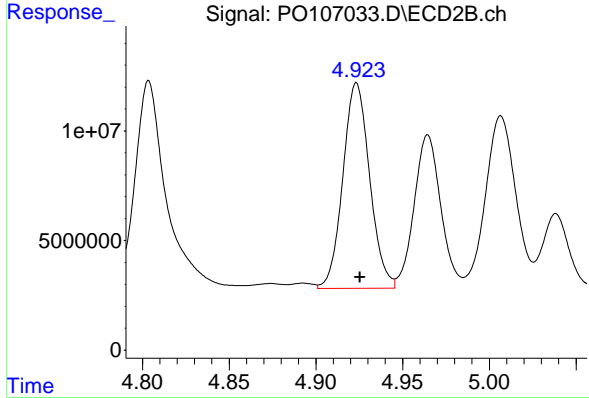
R.T.: 4.748 min
 Delta R.T.: -0.002 min
 Response: 198057833
 Conc: 1618.71 ng/ml



#18 AR-1242-3

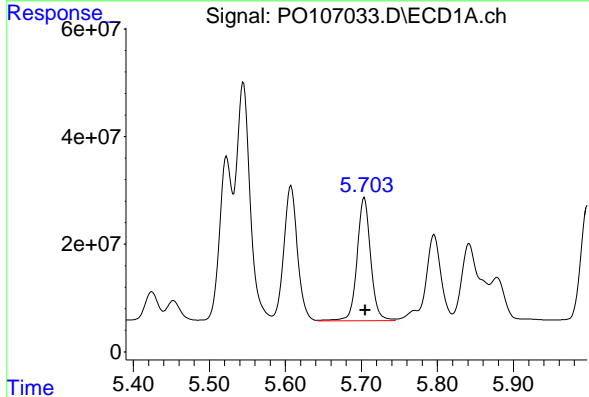
R.T.: 5.607 min
 Delta R.T.: -0.001 min
 Response: 314741171
 Conc: 1378.97 ng/ml

Instrument :
 ECD_O
 ClientSampleId :
 PIPE-11



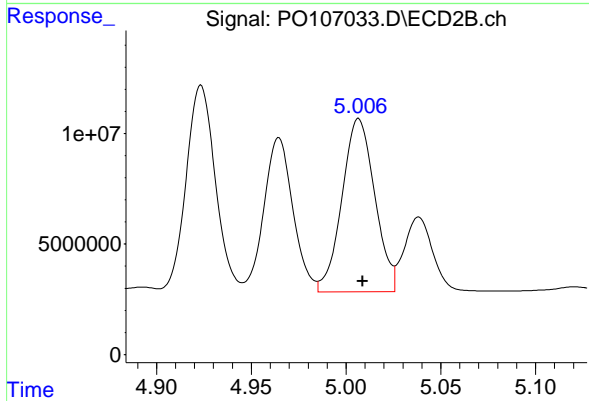
#18 AR-1242-3

R.T.: 4.923 min
 Delta R.T.: -0.002 min
 Response: 100752610
 Conc: 1499.59 ng/ml



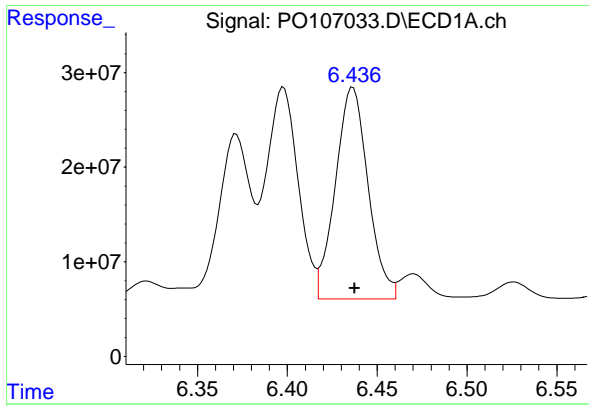
#19 AR-1242-4

R.T.: 5.704 min
 Delta R.T.: -0.001 min
 Response: 285392979
 Conc: 1561.26 ng/ml



#19 AR-1242-4

R.T.: 5.007 min
 Delta R.T.: -0.002 min
 Response: 94443004
 Conc: 1387.92 ng/ml



#20 AR-1242-5

R.T.: 6.437 min

Delta R.T.: 0.000 min

Response: 283147978

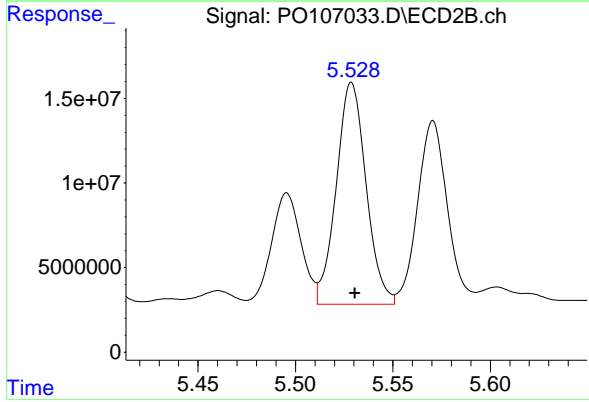
Conc: 1855.54 ng/ml

Instrument :

ECD_O

ClientSampleId :

PIPE-11



#20 AR-1242-5

R.T.: 5.529 min

Delta R.T.: -0.002 min

Response: 139520795

Conc: 1734.44 ng/ml