

Data Path : Z:\pestpcbsrv\HPCHEM1\ECD_O\Data\PO101019\
 Data File : P0061852.D
 Signal(s) : Signal #1: ECD1A.CH Signal #2: ECD2B.CH
 Acq On : 10 Oct 2019 12:59
 Operator : HP/AJ
 Sample : K5145-01
 Misc :
 ALS Vial : 8 Sample Multiplier: 1

Instrument :
 ECD_O
 ClientSampleId :
 HD-01-100919

Manual Integrations
 APPROVED

Ankita
 10/11/2019 2:10:17 PM

Integration File signal 1: autoint1.e
 Integration File signal 2: autoint2.e
 Quant Time: Oct 10 13:18:22 2019
 Quant Method : Z:\pestpcbsrv\HPCHEM1\ECD_O\methods\PO100119.M
 Quant Title : GC EXTRACTABLES
 QLast Update : Thu Oct 10 11:46:12 2019
 Response via : Initial Calibration
 Integrator: ChemStation 6890 Scale Mode: Small noise peaks clipped

Volume Inj. : 2 µl
 Signal #1 Phase : ZB-MR1 Signal #2 Phase: ZB-MR2
 Signal #1 Info : 30Mx0.32mmx 0.50µ Signal #2 Info : 30M x 0.32mm x 0.25µm

Compound	RT#1	RT#2	Resp#1	Resp#2	ng/ml	ng/ml

System Monitoring Compounds						
1) SA Tetrachlo...	4.353	3.513	1183325	833745	28.852	25.781
2) SA Decachlor...	10.010	8.373	923589	623052	19.832	19.244m

Target Compounds

(f)=RT Delta > 1/2 Window (#)=Amounts differ by > 25% (m)=manual int.

Data Path : Z:\pestpcbsrv\HPCHEM1\ECD_O\Data\PO101019\
 Data File : PO061852.D
 Signal(s) : Signal #1: ECD1A.CH Signal #2: ECD2B.CH
 Acq On : 10 Oct 2019 12:59
 Operator : HP/AJ
 Sample : K5145-01
 Misc :
 ALS Vial : 8 Sample Multiplier: 1

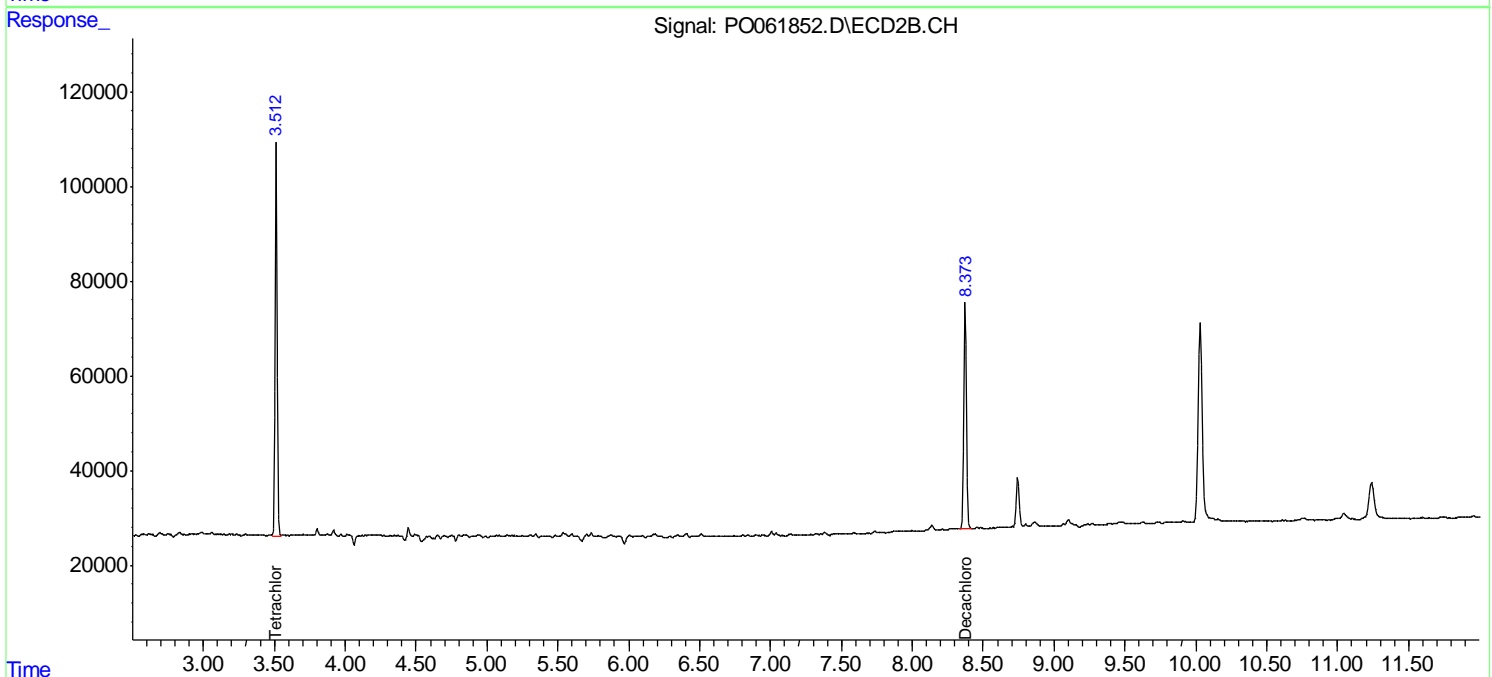
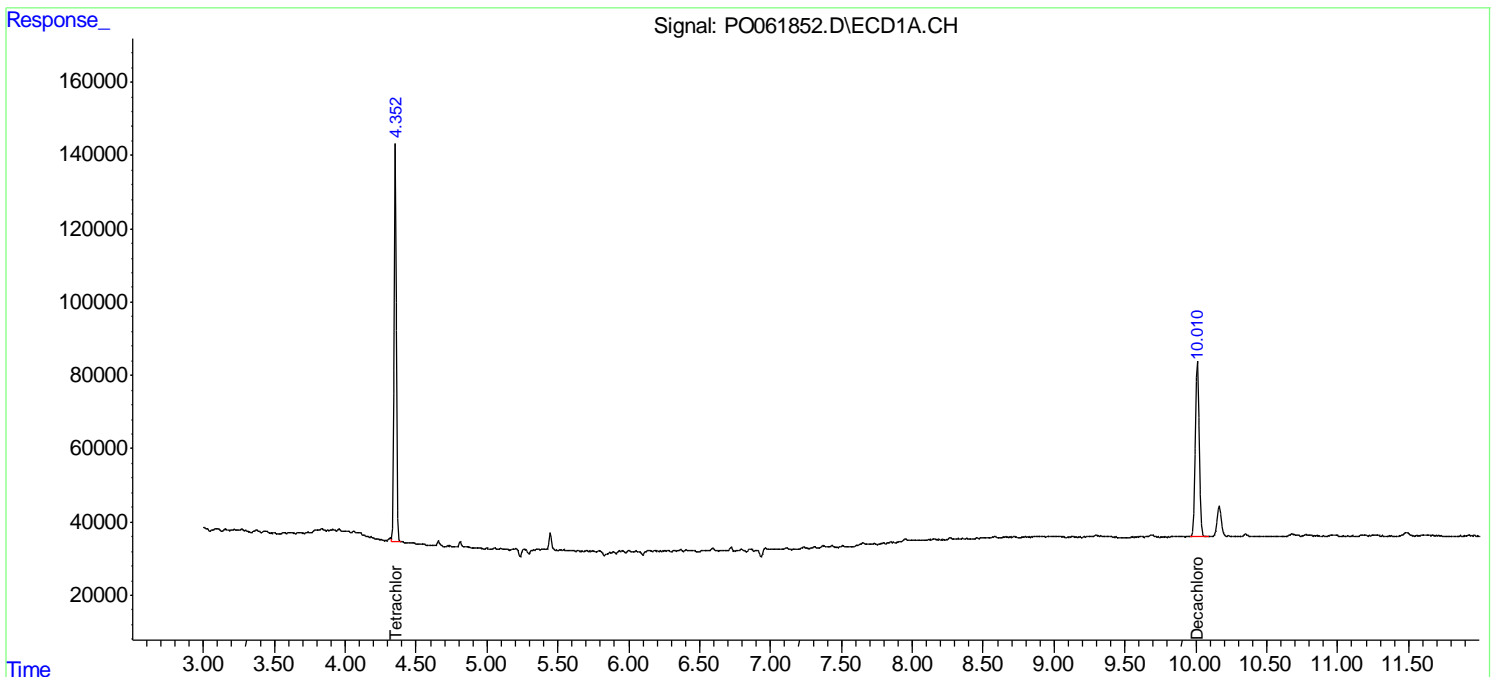
Instrument :
 ECD_O
 ClientSampleID :
 HD-01-100919

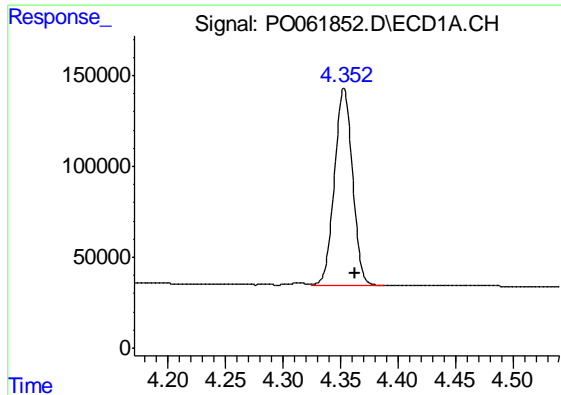
Manual Integrations
 APPROVED

Ankita
 10/11/2019 2:10:17 PM

Integration File signal 1: autoint1.e
 Integration File signal 2: autoint2.e
 Quant Time: Oct 10 13:18:22 2019
 Quant Method : Z:\pestpcbsrv\HPCHEM1\ECD_O\methods\PO100119.M
 Quant Title : GC EXTRACTABLES
 QLast Update : Thu Oct 10 11:46:12 2019
 Response via : Initial Calibration
 Integrator: ChemStation 6890 Scale Mode: Small noise peaks clipped

Volume Inj. : 2 µl
 Signal #1 Phase : ZB-MR1 Signal #2 Phase: ZB-MR2
 Signal #1 Info : 30Mx0.32mmx 0.50µm Signal #2 Info : 30M x 0.32mm x 0.25µm





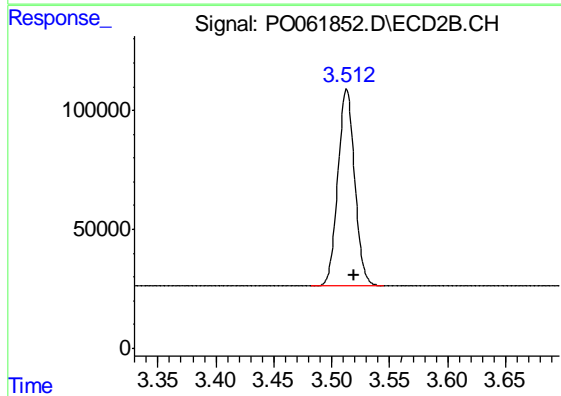
#1 Tetrachloro-m-xylene

R.T.: 4.353 min
 Delta R.T.: -0.010 min
 Response: 1183325
 Conc: 28.85 ng/ml

Instrument :
 ECD_O
 ClientSampleId :
 HD-01-100919

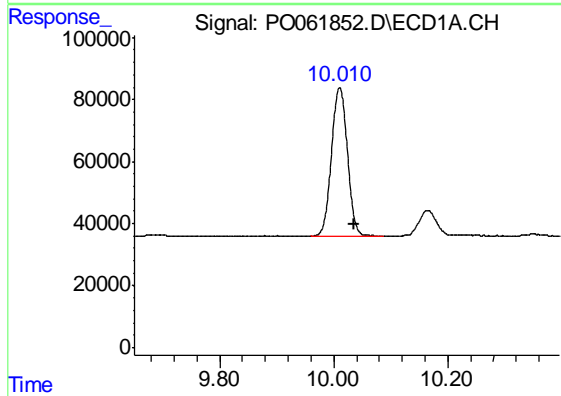
Manual Integrations
 APPROVED

Ankita
 10/11/2019 2:10:17 PM



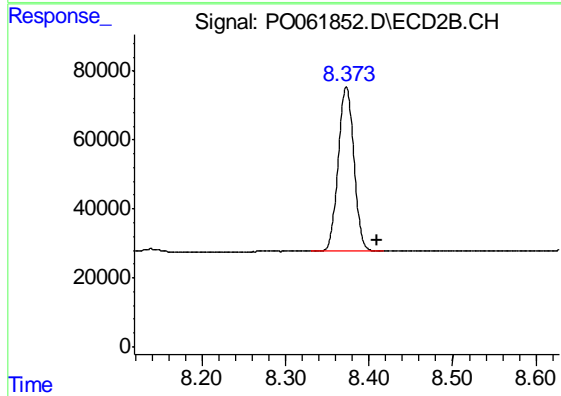
#1 Tetrachloro-m-xylene

R.T.: 3.513 min
 Delta R.T.: -0.006 min
 Response: 833745
 Conc: 25.78 ng/ml



#2 Decachlorobiphenyl

R.T.: 10.010 min
 Delta R.T.: -0.026 min
 Response: 923589
 Conc: 19.83 ng/ml



#2 Decachlorobiphenyl

R.T.: 8.373 min
 Delta R.T.: -0.036 min
 Response: 623052
 Conc: 19.24 ng/ml m