

Data Path : Z:\pestpcbsrv\HPCHEM1\ECD_0\Data\PO101020\
 Data File : PO072252.D
 Signal(s) : Signal #1: ECD1A.CH Signal #2: ECD2B.CH
 Acq On : 10 Oct 2020 13:46
 Operator : DD\AJ
 Sample : L4322-01 5X
 Misc :
 ALS Vial : 19 Sample Multiplier: 1

Instrument :
 ECD_0
 ClientSampleId :
 HIH021D-END-1

Integration File signal 1: autoint1.e
 Integration File signal 2: autoint2.e
 Quant Time: Oct 12 04:23:57 2020
 Quant Method : Z:\pestpcbsrv\HPCHEM1\ECD_0\methods\PO100320.M
 Quant Title : GC EXTRACTABLES
 QLast Update : Mon Oct 05 11:48:20 2020
 Response via : Initial Calibration
 Integrator: ChemStation 6890 Scale Mode: Small noise peaks clipped

Volume Inj. : 2 µl
 Signal #1 Phase : ZB-MR1 Signal #2 Phase: ZB-MR2
 Signal #1 Info : 30Mx0.32mmx 0.50µ Signal #2 Info : 30M x 0.32mm x 0.25µm

Compound	RT#1	RT#2	Resp#1	Resp#2	ng/ml	ng/ml

System Monitoring Compounds						
1) SA Tetrachlo...	4.325	3.510	191380	189805	2.665	5.067 #
2) SA Decachlor...	9.931	8.680	317981	191400	2.888	3.365

Target Compounds

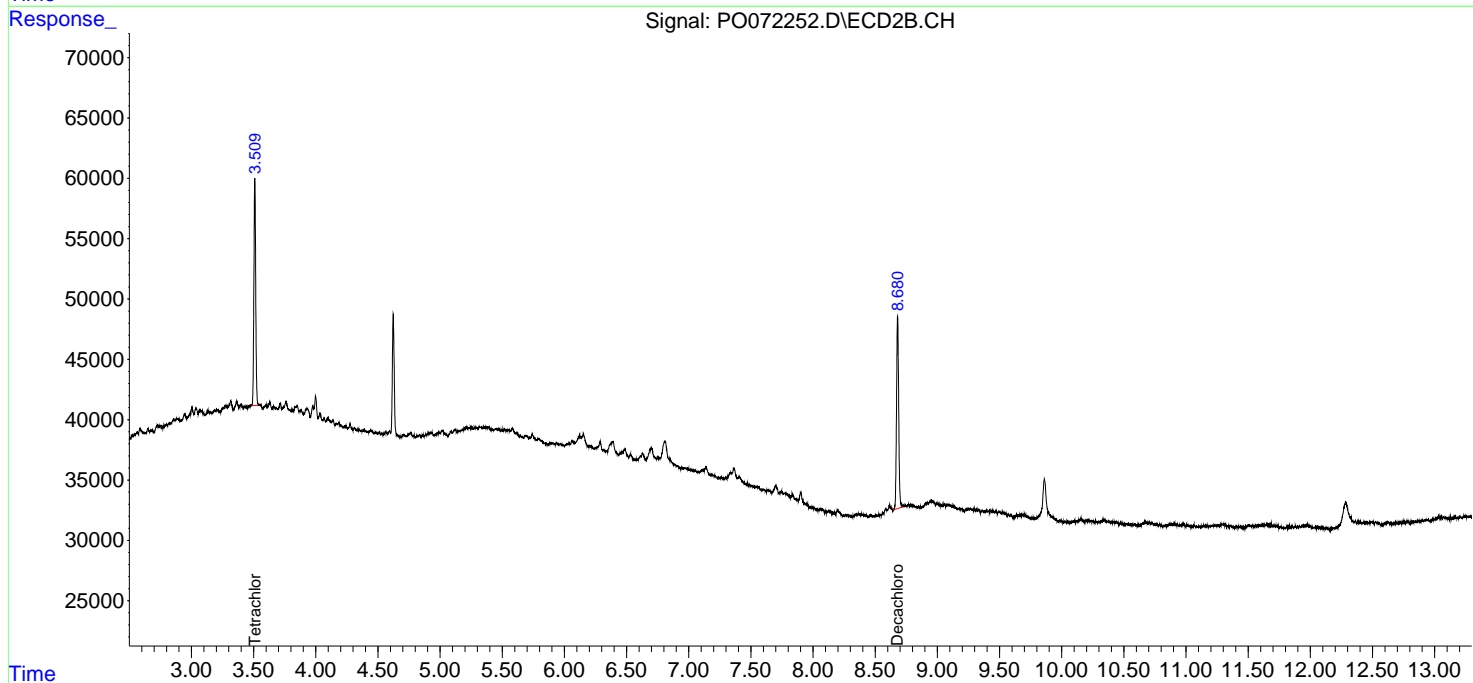
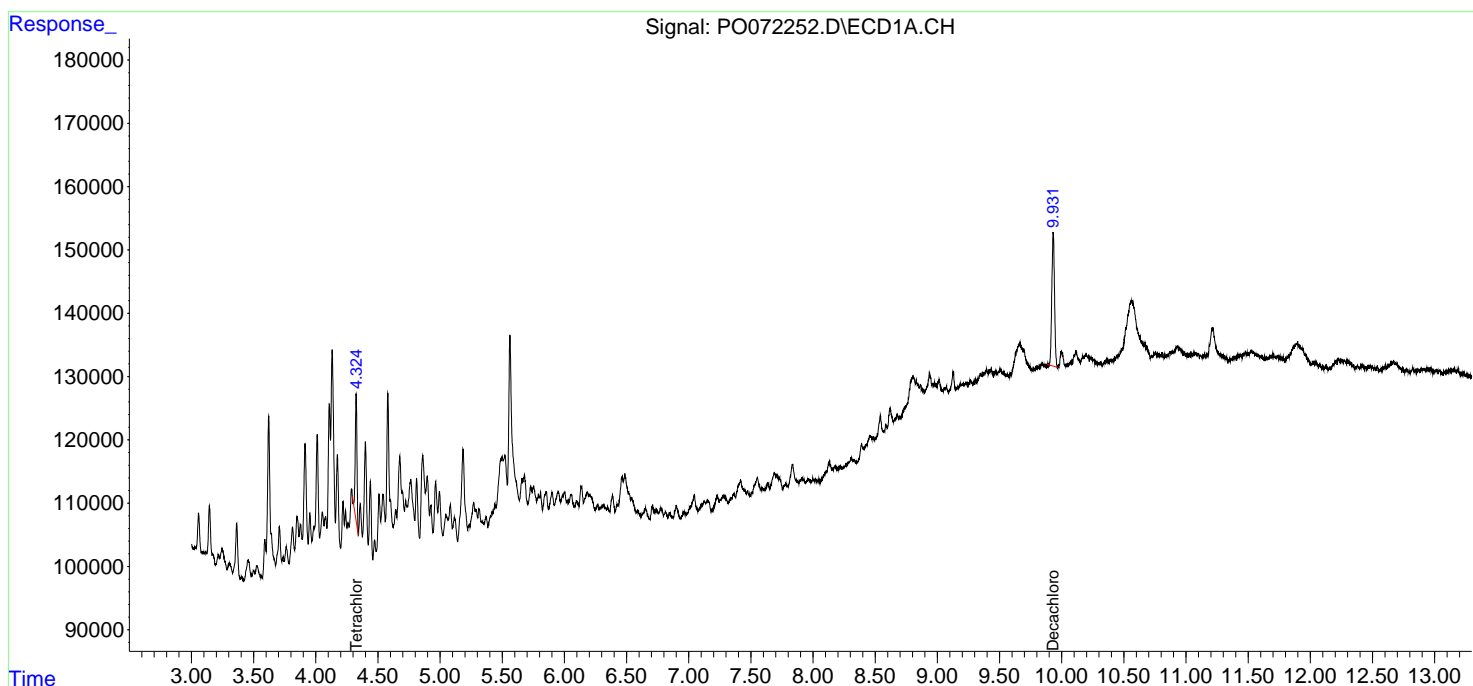
(f)=RT Delta > 1/2 Window (#)=Amounts differ by > 25% (m)=manual int.

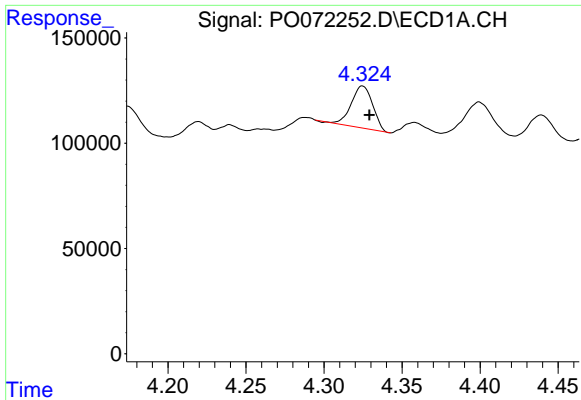
Data Path : Z:\pestpcbsrv\HPCHEM1\ECD_O\Data\PO101020\
 Data File : PO072252.D
 Signal(s) : Signal #1: ECD1A.CH Signal #2: ECD2B.CH
 Acq On : 10 Oct 2020 13:46
 Operator : DD\AJ
 Sample : L4322-01 5X
 Misc :
 ALS Vial : 19 Sample Multiplier: 1

Instrument :
 ECD_O
 ClientSampled :
 HIH021D-END-1

Integration File signal 1: autoint1.e
 Integration File signal 2: autoint2.e
 Quant Time: Oct 12 04:23:57 2020
 Quant Method : Z:\pestpcbsrv\HPCHEM1\ECD_O\methods\PO100320.M
 Quant Title : GC EXTRACTABLES
 QLast Update : Mon Oct 05 11:48:20 2020
 Response via : Initial Calibration
 Integrator: ChemStation 6890 Scale Mode: Small noise peaks clipped

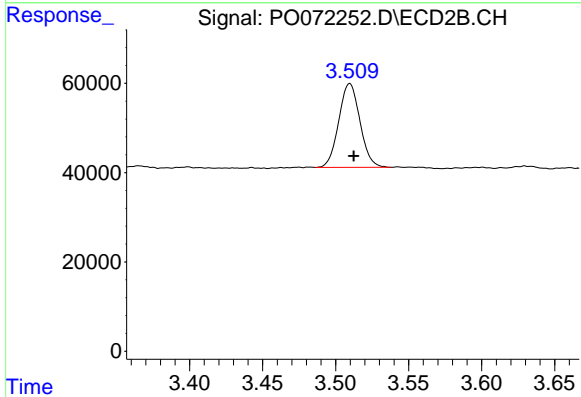
Volume Inj. : 2 µl
 Signal #1 Phase : ZB-MR1 Signal #2 Phase: ZB-MR2
 Signal #1 Info : 30Mx0.32mmx 0.50µm Signal #2 Info : 30M x 0.32mm x 0.25µm



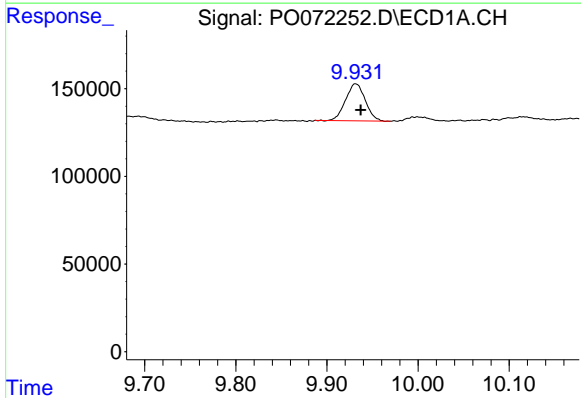


#1 Tetrachloro-m-xylene
 R.T.: 4.325 min
 Delta R.T.: -0.004 min
 Response: 191380
 Conc: 2.66 ng/ml

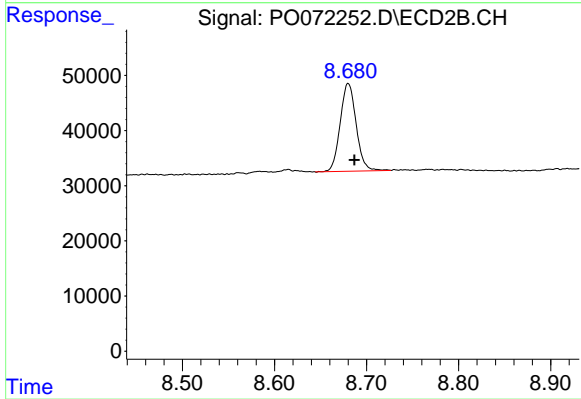
Instrument :
 ECD_O
 ClientSampleId :
 HIH021D-END-1



#1 Tetrachloro-m-xylene
 R.T.: 3.510 min
 Delta R.T.: -0.003 min
 Response: 189805
 Conc: 5.07 ng/ml



#2 Decachlorobiphenyl
 R.T.: 9.931 min
 Delta R.T.: -0.006 min
 Response: 317981
 Conc: 2.89 ng/ml



#2 Decachlorobiphenyl
 R.T.: 8.680 min
 Delta R.T.: -0.007 min
 Response: 191400
 Conc: 3.37 ng/ml