

Data Path : Z:\pestpcbsrv\HPCHEM1\ECD_0\Data\PO101118\
 Data File : PO049906.D
 Signal(s) : Signal #1: ECD1A.CH Signal #2: ECD2B.CH
 Acq On : 11 Oct 2018 12:39
 Operator : SM/SJ
 Sample : J5382-04
 Misc :
 ALS Vial : 17 Sample Multiplier: 1

Instrument :
 ECD_0
 ClientSampled :

Integration File signal 1: autoint1.e
 Integration File signal 2: autoint2.e
 Quant Time: Oct 11 14:42:16 2018
 Quant Method : Z:\pestpcbsrv\HPCHEM1\ECD_0\methods\PO100818.M
 Quant Title : GC EXTRACTABLES
 QLast Update : Mon Oct 08 15:27:38 2018
 Response via : Initial Calibration
 Integrator: ChemStation 6890 Scale Mode: Small noise peaks clipped

Volume Inj. : 2 µl
 Signal #1 Phase : ZB-MR1 Signal #2 Phase: ZB-MR2
 Signal #1 Info : 30Mx0.32mmx 0.50µ Signal #2 Info : 30M x 0.32mm x 0.25µm

Compound	RT#1	RT#2	Resp#1	Resp#2	ng/ml	ng/ml
System Monitoring Compounds						
1) SA Tetrachlo...	4.364	3.529	53296058	85305119	235.766	353.684 #
2) SA Decachlor...	10.048	8.418	1882626	1259755	5.650	4.816
Target Compounds						
3) L1 AR-1016-1	5.557	4.602	88222877	42085274	7804.829	3469.528 #
4) L1 AR-1016-2	5.557	4.602	88222877	42085274	5600.698	2590.590 #
5) L1 AR-1016-3	5.618	4.794	144.7E6	44741528	14475.882	4635.317 #
6) L1 AR-1016-4	5.718	4.794	96662959	44741528	11506.458	6281.884 #
7) L1 AR-1016-5	6.052	5.002	18608649	66690774	2139.082	6870.856 #
8) L2 AR-1221-1	4.611	3.738	101.0E6	18208331	43918.626	6853.795 #
9) L2 AR-1221-2	4.694	3.835	60585737	21385372	33228.556	10663.182 #
10) L2 AR-1221-3	4.744	3.879	67013614	16596446	11327.324	2570.772 #
11) L3 AR-1232-1	4.744	3.879	67013614	16596446	14275.981	3443.254 #
12) L3 AR-1232-2	5.297	4.602	73797953	42085274	30223.600	7233.630 #
13) L3 AR-1232-3	5.557	4.794	88222877	44741528	16810.587	13579.882
14) L3 AR-1232-4	5.718	4.875	96662959	32397626	34884.013	11800.273 #
15) L3 AR-1232-5	5.851	5.043	117.0E6	54530399	60292.682	17450.791 #
16) L4 AR-1242-1	5.557	4.602	88222877	42085274	11110.046	5075.144 #
17) L4 AR-1242-2	5.557	4.602	88222877	42085274	8048.402	3653.083 #
18) L4 AR-1242-3	5.618	4.794	144.7E6	44741528	20847.173	6963.350 #
19) L4 AR-1242-4	5.718	4.875	96662959	32397626	16261.076	5411.177 #
20) L4 AR-1242-5	6.454	5.386	14114006	140.8E6	1961.741	17545.340 #
21) L5 AR-1248-1	5.557	4.602	88222877	42085274	14679.189	6342.566 #
22) L5 AR-1248-2	5.851	4.835	117.0E6	45065879	14055.326	5297.283 #
23) L5 AR-1248-3	6.052	4.875	18608649	32397626	1924.609	3691.204 #
24) L5 AR-1248-4	6.454	5.043	14114006	54530399	1140.749	5017.595 #
25) L5 AR-1248-5	6.454	5.386	14114006	140.8E6	1202.586	12404.350 #
26) L6 AR-1254-1	6.414	5.386	15173520	140.8E6	1103.417	7183.396 #
27) L6 AR-1254-2	6.654	5.532	16359015	119.6E6	740.916	7147.342 #
28) L6 AR-1254-3	6.973	5.932	94042914	241.0E6	3854.357	8633.330 #
29) L6 AR-1254-4	7.257	6.152	75751123	53042467	3693.572	2643.366 #
30) L6 AR-1254-5	7.705	6.565	60917796	435.3E6	3161.099	16269.244 #
31) L7 AR-1260-1	7.135	6.056	298.9E6	276.9E6	16202.412	13412.369
32) L7 AR-1260-2	7.436	6.240	112.5E6	362.8E6	4693.375	12939.853 #
33) L7 AR-1260-3	7.748	6.391	290.5E6	309.5E6	15362.567	12701.769
34) L7 AR-1260-4	7.974	6.855	304.1E6	214.6E6	16014.338	11110.782 #
35) L7 AR-1260-5	8.289	7.094	714.8E6	640.3E6	16897.172	12489.310 #
36) L8 AR-1262-1	7.805	6.594	150.4E6	271.5E6	7124.436	11066.485 #
37) L8 AR-1262-2	8.341	7.094	32134309	640.3E6	862.524	15130.373 #
38) L8 AR-1262-3	8.611	7.370	399.8E6	107.8E6	16571.917	6404.297 #
39) L8 AR-1262-4	8.663	7.437	220.3E6	423.8E6	11615.003	14380.243
40) L8 AR-1262-5	9.322	7.924	151.7E6	121.6E6	11103.753	9120.495
41) L9 AR-1268-1	8.611	7.370	399.8E6	107.8E6	7995.506	2015.043 #

Data Path : Z:\pestpcbsrv\HPCHEM1\ECD_0\Data\PO101118\
 Data File : PO049906.D
 Signal(s) : Signal #1: ECD1A.CH Signal #2: ECD2B.CH
 Acq On : 11 Oct 2018 12:39
 Operator : SM/SJ
 Sample : J5382-04
 Misc :
 ALS Vial : 17 Sample Multiplier: 1

Instrument :
 ECD_0
 ClientSampleId :

Integration File signal 1: autoint1.e
 Integration File signal 2: autoint2.e
 Quant Time: Oct 11 14:42:16 2018
 Quant Method : Z:\pestpcbsrv\HPCHEM1\ECD_0\methods\PO100818.M
 Quant Title : GC EXTRACTABLES
 QLast Update : Mon Oct 08 15:27:38 2018
 Response via : Initial Calibration
 Integrator: ChemStation 6890 Scale Mode: Small noise peaks clipped

Volume Inj. : 2 µl
 Signal #1 Phase : ZB-MR1 Signal #2 Phase: ZB-MR2
 Signal #1 Info : 30Mx0.32mmx 0.50µ Signal #2 Info : 30M x 0.32mm x 0.25µm

	Compound	RT#1	RT#2	Resp#1	Resp#2	ng/ml	ng/ml
42)	L9 AR-1268-2	8.663	7.437	220.3E6	423.8E6	4856.903	8736.732 #
43)	L9 AR-1268-3	8.904	7.625	4227808	3629839	105.943	90.097
44)	L9 AR-1268-4	9.410	7.924	7088087	121.6E6	415.868	7300.213 #
45)	L9 AR-1268-5	9.722	8.195	23269495	17194315	191.644	165.553

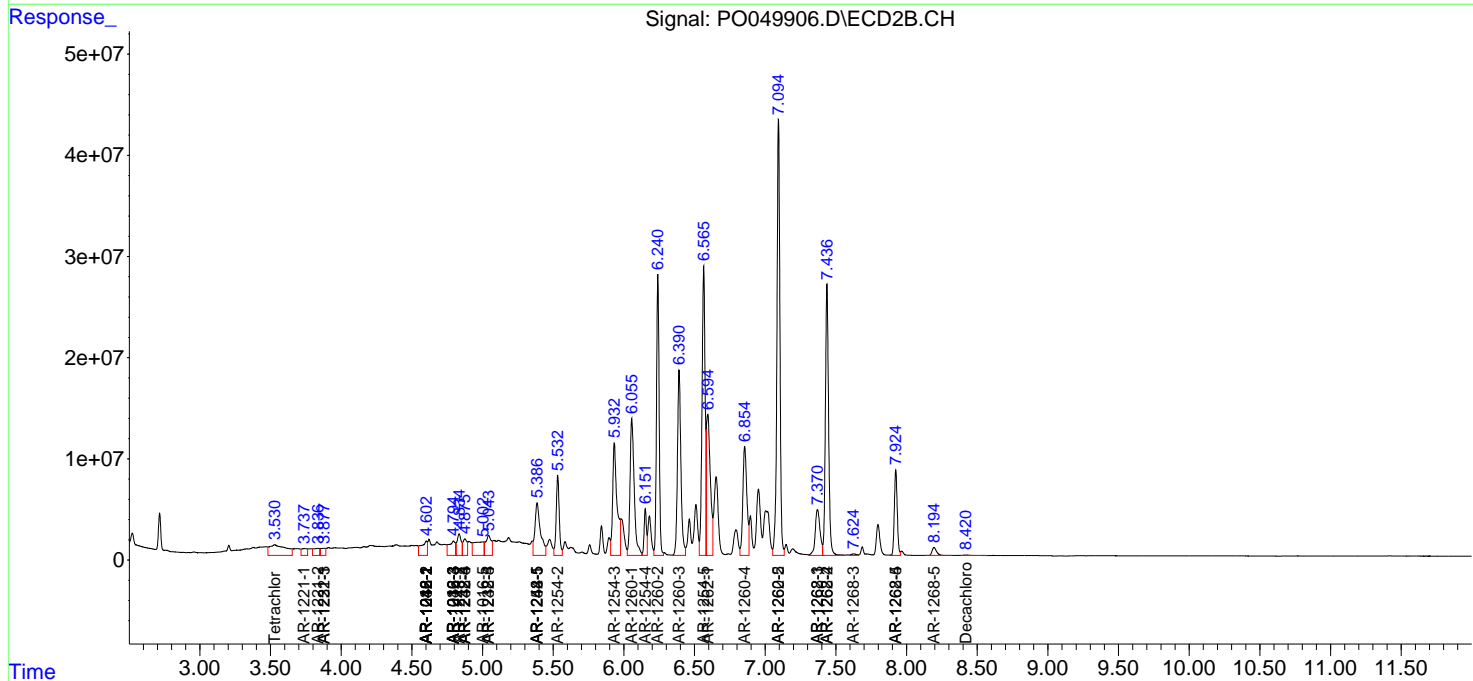
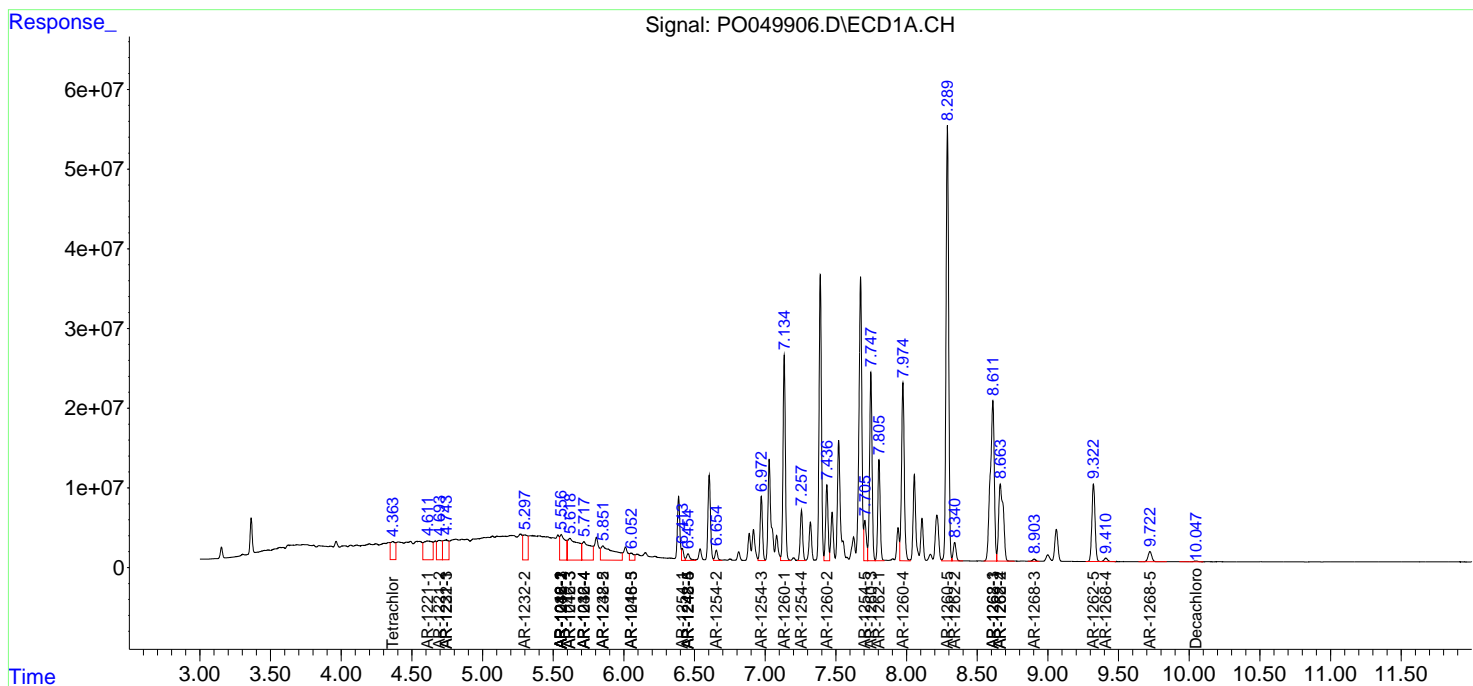
(f)=RT Delta > 1/2 Window (#)=Amounts differ by > 25% (m)=manual int.

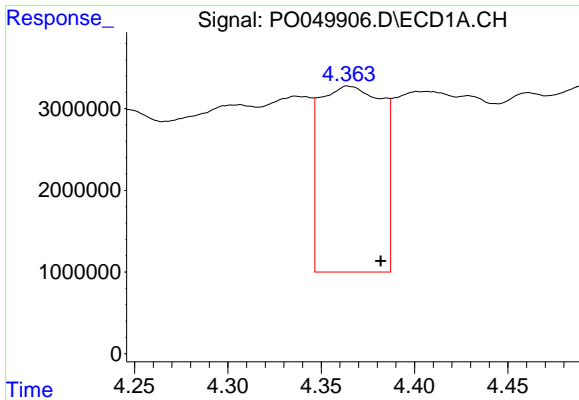
Data Path : Z:\pestpcbsrv\HPCHEM1\ECD_O\Data\PO101118\
 Data File : P0049906.D
 Signal(s) : Signal #1: ECD1A.CH Signal #2: ECD2B.CH
 Acq On : 11 Oct 2018 12:39
 Operator : SM/SJ
 Sample : J5382-04
 Misc :
 ALS Vial : 17 Sample Multiplier: 1

Instrument :
 ECD_O
 ClientSampled :

Integration File signal 1: autoint1.e
 Integration File signal 2: autoint2.e
 Quant Time: Oct 11 14:42:16 2018
 Quant Method : Z:\pestpcbsrv\HPCHEM1\ECD_O\methods\PO100818.M
 Quant Title : GC EXTRACTABLES
 QLast Update : Mon Oct 08 15:27:38 2018
 Response via : Initial Calibration
 Integrator: ChemStation 6890 Scale Mode: Small noise peaks clipped

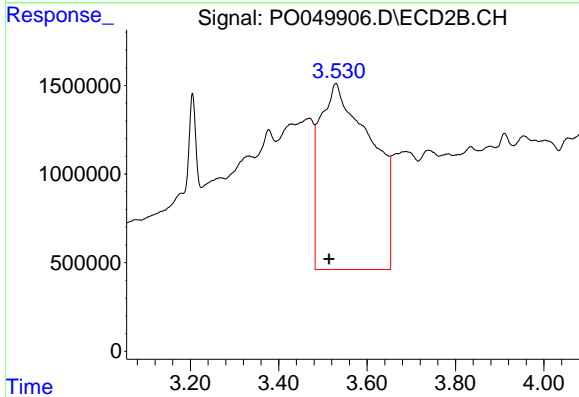
Volume Inj. : 2 µl
 Signal #1 Phase : ZB-MR1 Signal #2 Phase: ZB-MR2
 Signal #1 Info : 30Mx0.32mmx 0.50µ Signal #2 Info : 30M x 0.32mm x 0.25µm



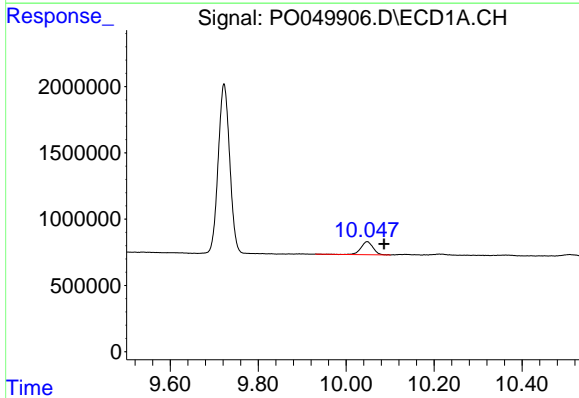


#1 Tetrachloro-m-xylene
 R.T.: 4.364 min
 Delta R.T.: -0.018 min
 Response: 53296058
 Conc: 235.77 ng/ml

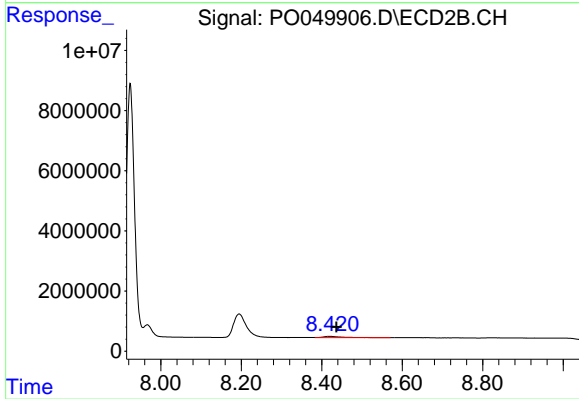
Instrument :
 ECD_O
 ClientSampled :



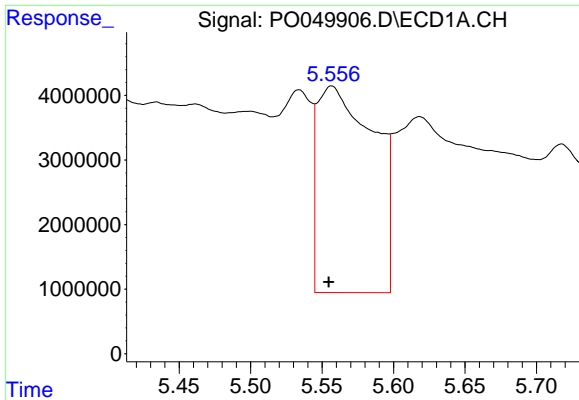
#1 Tetrachloro-m-xylene
 R.T.: 3.529 min
 Delta R.T.: 0.016 min
 Response: 85305119
 Conc: 353.68 ng/ml



#2 Decachlorobiphenyl
 R.T.: 10.048 min
 Delta R.T.: -0.039 min
 Response: 1882626
 Conc: 5.65 ng/ml



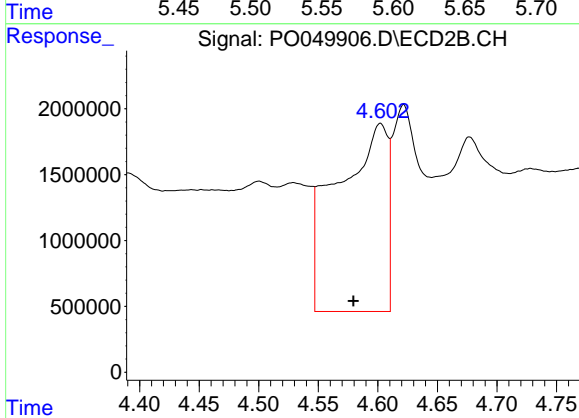
#2 Decachlorobiphenyl
 R.T.: 8.418 min
 Delta R.T.: -0.018 min
 Response: 1259755
 Conc: 4.82 ng/ml



#3 AR-1016-1

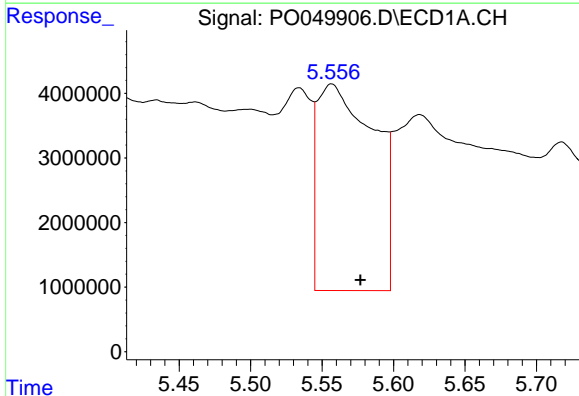
R.T.: 5.557 min
 Delta R.T.: 0.002 min
 Response: 88222877
 Conc: 7804.83 ng/ml

Instrument :
 ECD_O
 ClientSampled :



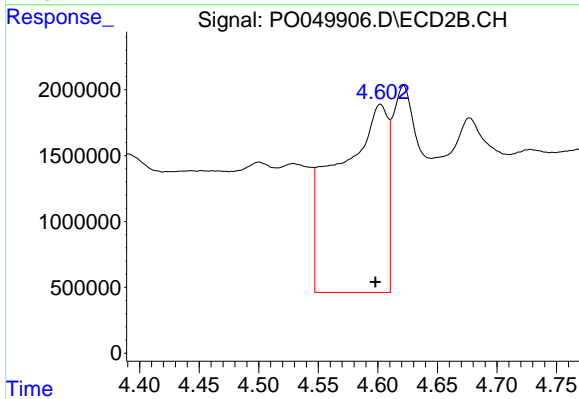
#3 AR-1016-1

R.T.: 4.602 min
 Delta R.T.: 0.023 min
 Response: 42085274
 Conc: 3469.53 ng/ml



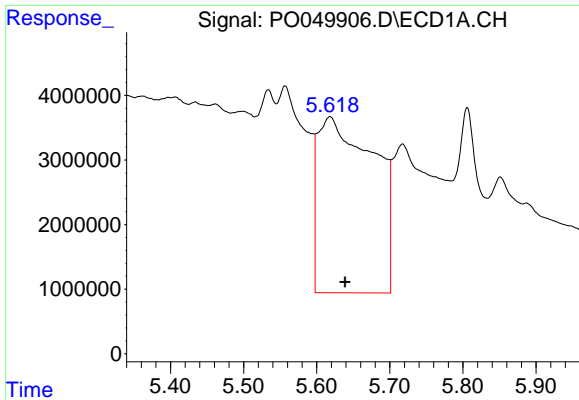
#4 AR-1016-2

R.T.: 5.557 min
 Delta R.T.: -0.020 min
 Response: 88222877
 Conc: 5600.70 ng/ml



#4 AR-1016-2

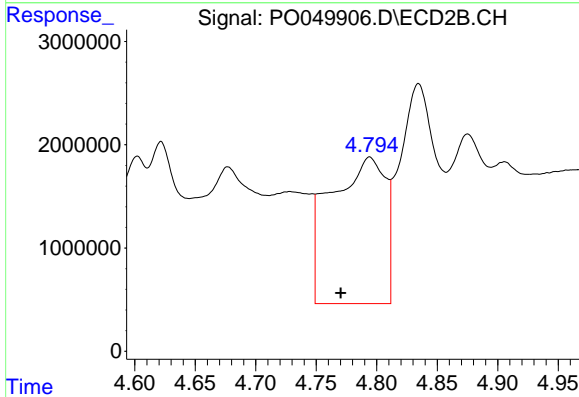
R.T.: 4.602 min
 Delta R.T.: 0.004 min
 Response: 42085274
 Conc: 2590.59 ng/ml



#5 AR-1016-3

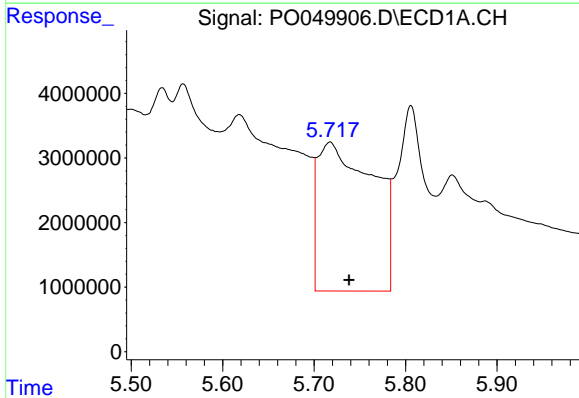
R.T.: 5.618 min
 Delta R.T.: -0.021 min
 Response: 144735296
 Conc: 14475.88 ng/ml

Instrument :
 ECD_O
 ClientSampleId :



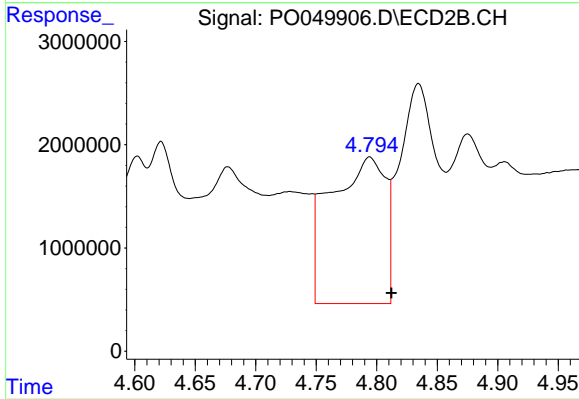
#5 AR-1016-3

R.T.: 4.794 min
 Delta R.T.: 0.024 min
 Response: 44741528
 Conc: 4635.32 ng/ml



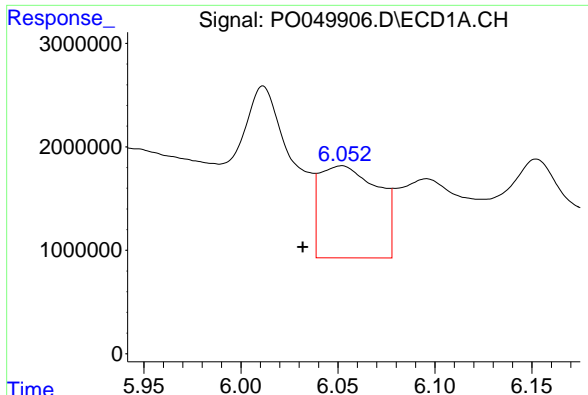
#6 AR-1016-4

R.T.: 5.718 min
 Delta R.T.: -0.021 min
 Response: 96662959
 Conc: 11506.46 ng/ml



#6 AR-1016-4

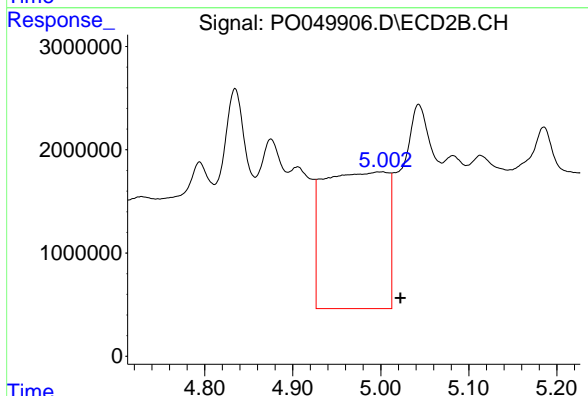
R.T.: 4.794 min
 Delta R.T.: -0.018 min
 Response: 44741528
 Conc: 6281.88 ng/ml



#7 AR-1016-5

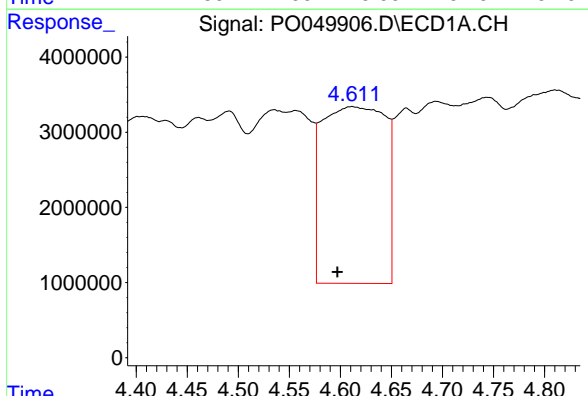
R.T.: 6.052 min
 Delta R.T.: 0.020 min
 Response: 18608649
 Conc: 2139.08 ng/ml

Instrument :
 ECD_O
 ClientSampled :



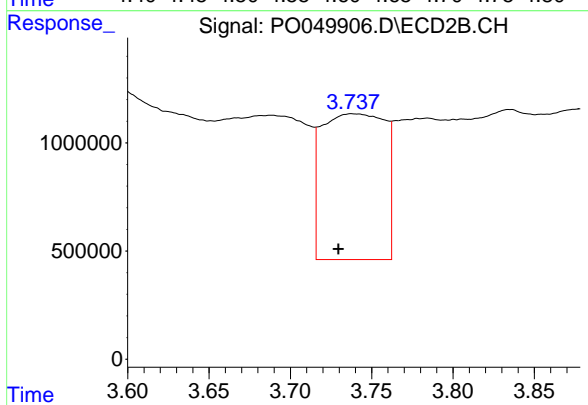
#7 AR-1016-5

R.T.: 5.002 min
 Delta R.T.: -0.020 min
 Response: 66690774
 Conc: 6870.86 ng/ml



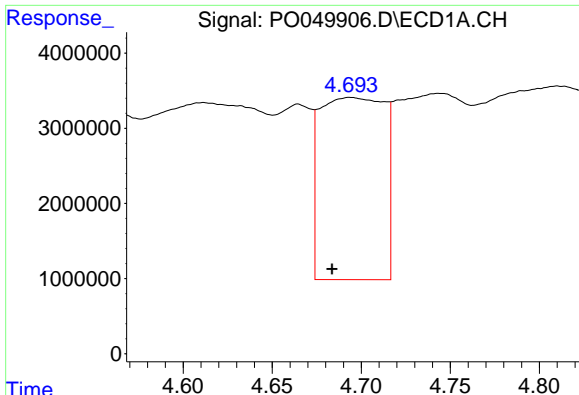
#8 AR-1221-1

R.T.: 4.611 min
 Delta R.T.: 0.014 min
 Response: 101017671
 Conc: 43918.63 ng/ml



#8 AR-1221-1

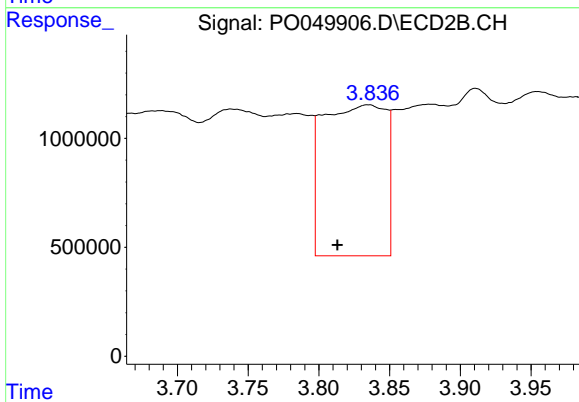
R.T.: 3.738 min
 Delta R.T.: 0.008 min
 Response: 18208331
 Conc: 6853.80 ng/ml



#9 AR-1221-2

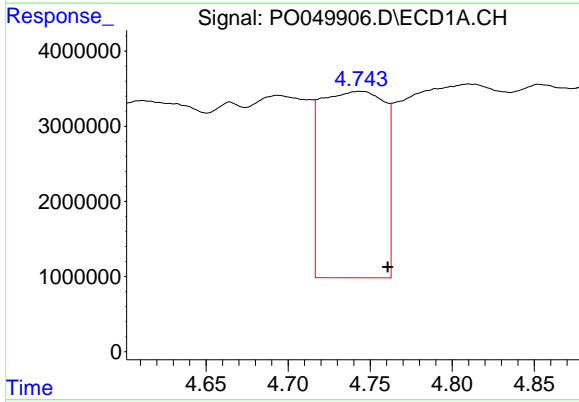
R.T.: 4.694 min
 Delta R.T.: 0.010 min
 Response: 60585737
 Conc: 33228.56 ng/ml

Instrument :
 ECD_O
 ClientSampleId :



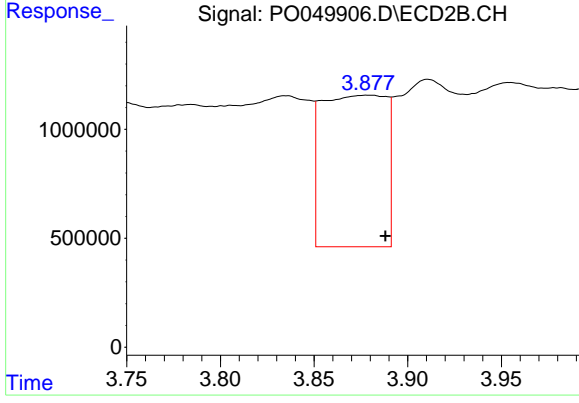
#9 AR-1221-2

R.T.: 3.835 min
 Delta R.T.: 0.022 min
 Response: 21385372
 Conc: 10663.18 ng/ml



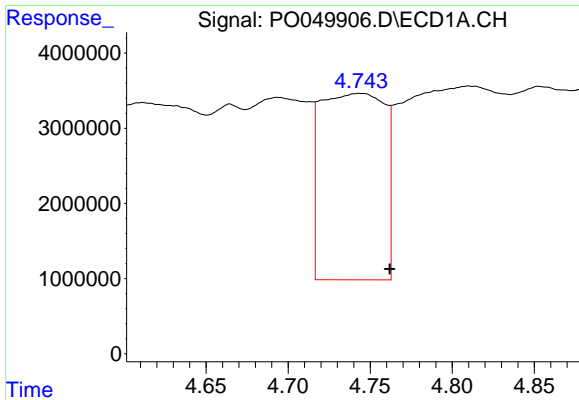
#10 AR-1221-3

R.T.: 4.744 min
 Delta R.T.: -0.017 min
 Response: 67013614
 Conc: 11327.32 ng/ml



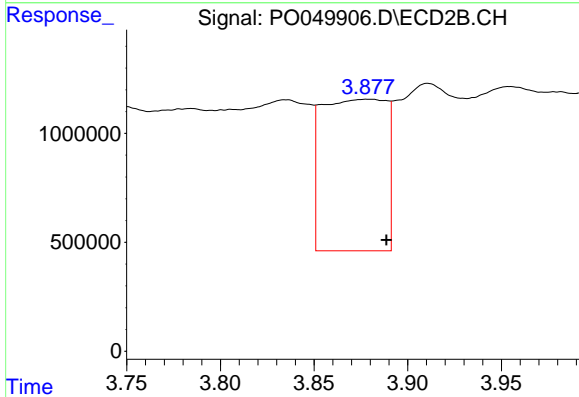
#10 AR-1221-3

R.T.: 3.879 min
 Delta R.T.: -0.009 min
 Response: 16596446
 Conc: 2570.77 ng/ml

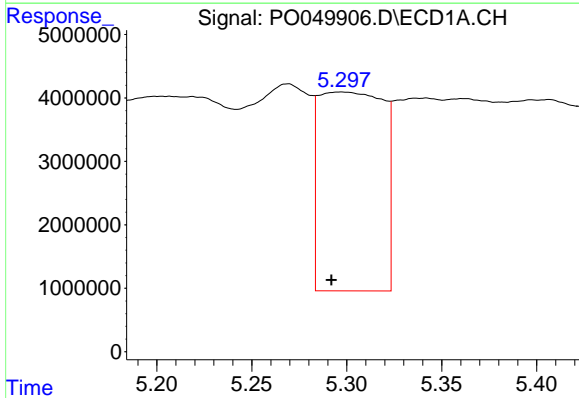


#11 AR-1232-1
 R.T.: 4.744 min
 Delta R.T.: -0.018 min
 Response: 67013614
 Conc: 14275.98 ng/ml

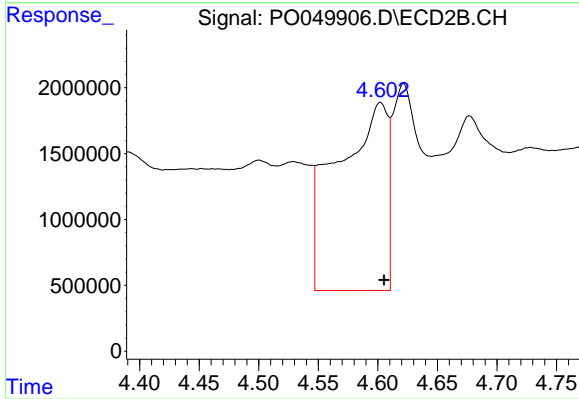
Instrument :
 ECD_O
 ClientSampleId :



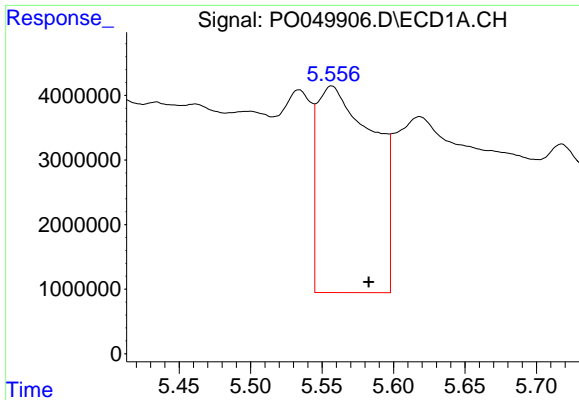
#11 AR-1232-1
 R.T.: 3.879 min
 Delta R.T.: -0.010 min
 Response: 16596446
 Conc: 3443.25 ng/ml



#12 AR-1232-2
 R.T.: 5.297 min
 Delta R.T.: 0.005 min
 Response: 73797953
 Conc: 30223.60 ng/ml



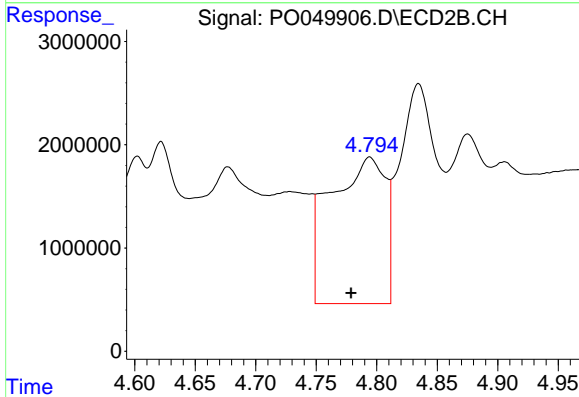
#12 AR-1232-2
 R.T.: 4.602 min
 Delta R.T.: -0.003 min
 Response: 42085274
 Conc: 7233.63 ng/ml



#13 AR-1232-3

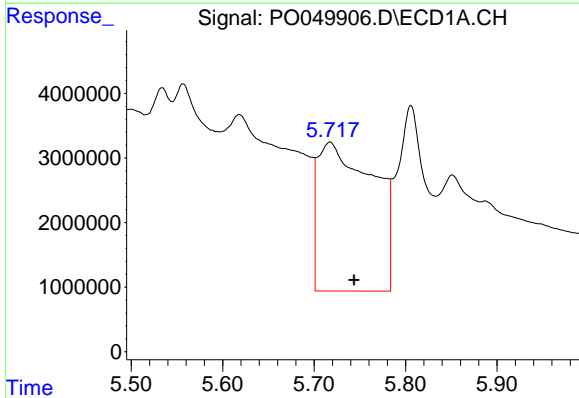
R.T.: 5.557 min
 Delta R.T.: -0.026 min
 Response: 88222877
 Conc: 16810.59 ng/ml

Instrument :
 ECD_O
 ClientSampleId :



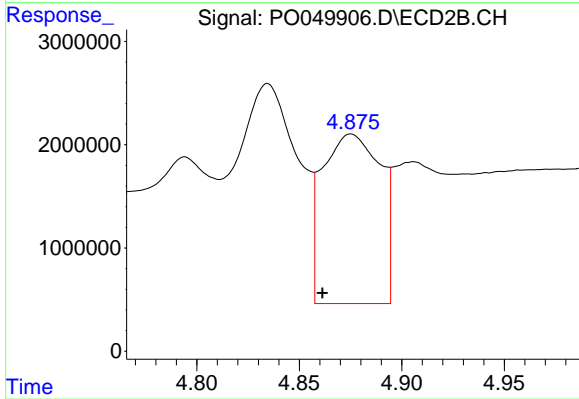
#13 AR-1232-3

R.T.: 4.794 min
 Delta R.T.: 0.015 min
 Response: 44741528
 Conc: 13579.88 ng/ml



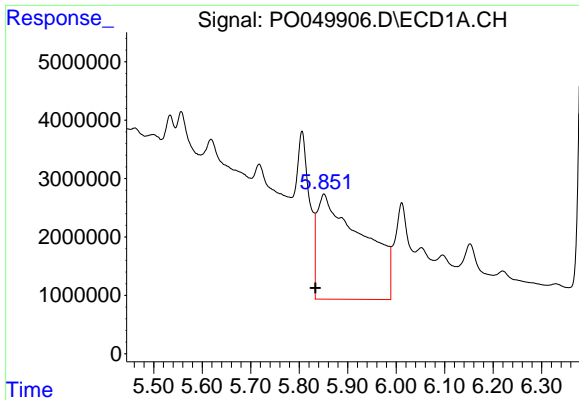
#14 AR-1232-4

R.T.: 5.718 min
 Delta R.T.: -0.026 min
 Response: 96662959
 Conc: 34884.01 ng/ml



#14 AR-1232-4

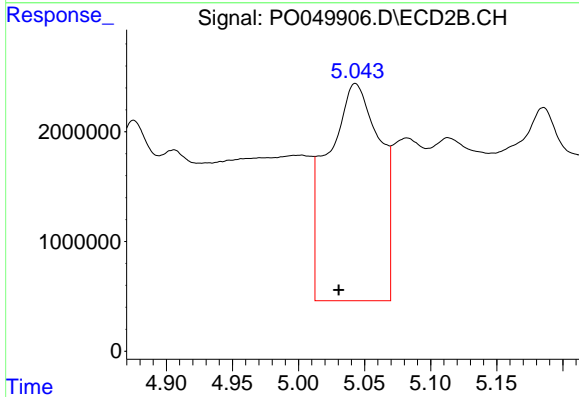
R.T.: 4.875 min
 Delta R.T.: 0.014 min
 Response: 32397626
 Conc: 11800.27 ng/ml



#15 AR-1232-5

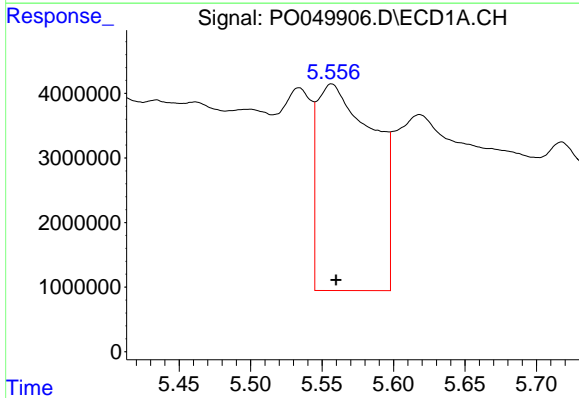
R.T.: 5.851 min
 Delta R.T.: 0.018 min
 Response: 116980063
 Conc: 60292.68 ng/ml

Instrument :
 ECD_O
 ClientSampleId :



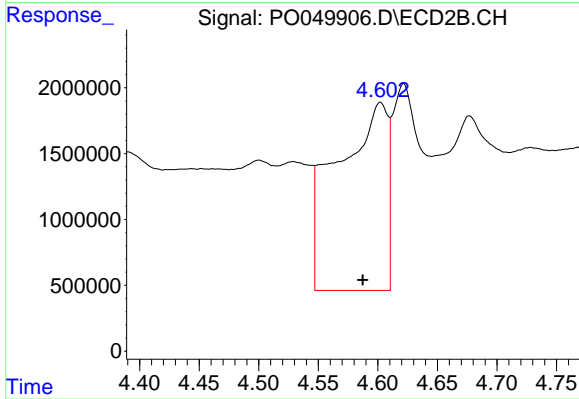
#15 AR-1232-5

R.T.: 5.043 min
 Delta R.T.: 0.013 min
 Response: 54530399
 Conc: 17450.79 ng/ml



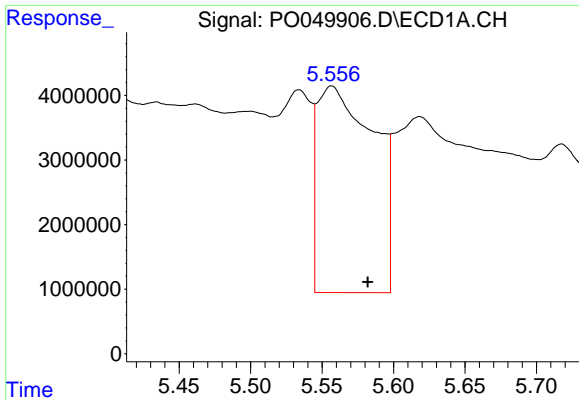
#16 AR-1242-1

R.T.: 5.557 min
 Delta R.T.: -0.003 min
 Response: 88222877
 Conc: 11110.05 ng/ml



#16 AR-1242-1

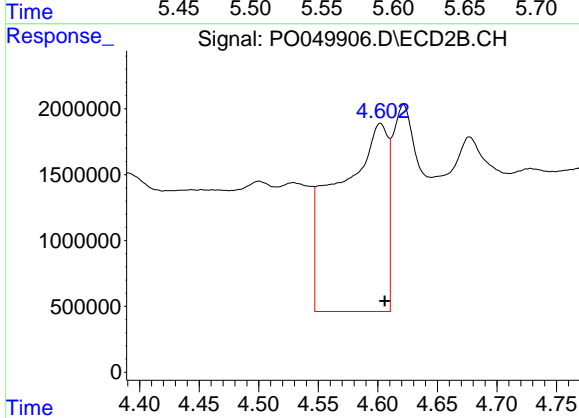
R.T.: 4.602 min
 Delta R.T.: 0.015 min
 Response: 42085274
 Conc: 5075.14 ng/ml



#17 AR-1242-2

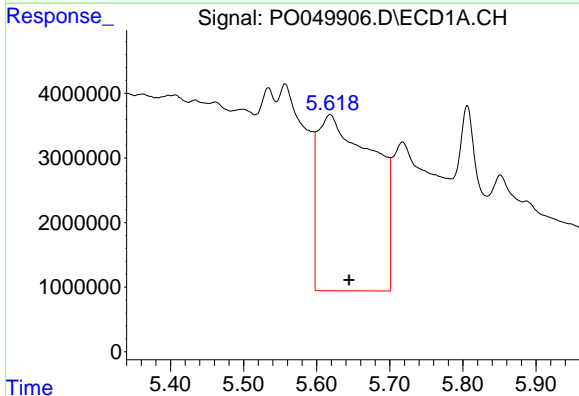
R.T.: 5.557 min
 Delta R.T.: -0.025 min
 Response: 88222877
 Conc: 8048.40 ng/ml

Instrument :
 ECD_O
 ClientSampled :



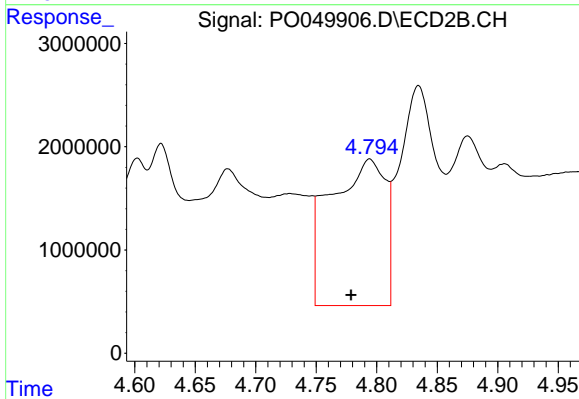
#17 AR-1242-2

R.T.: 4.602 min
 Delta R.T.: -0.004 min
 Response: 42085274
 Conc: 3653.08 ng/ml



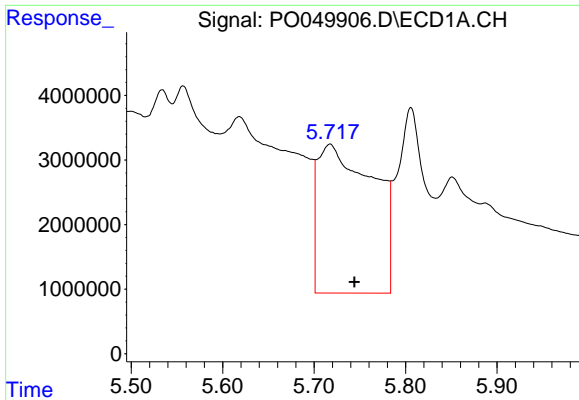
#18 AR-1242-3

R.T.: 5.618 min
 Delta R.T.: -0.026 min
 Response: 144735296
 Conc: 20847.17 ng/ml



#18 AR-1242-3

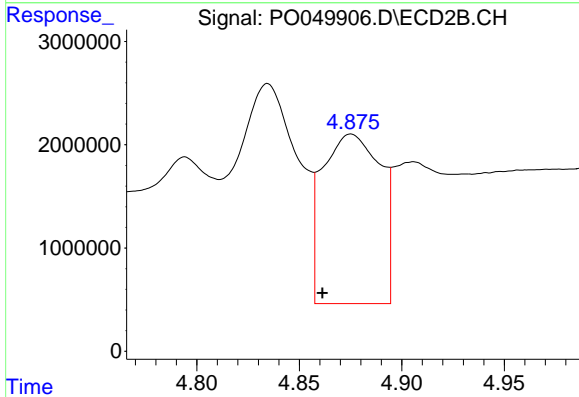
R.T.: 4.794 min
 Delta R.T.: 0.016 min
 Response: 44741528
 Conc: 6963.35 ng/ml



#19 AR-1242-4

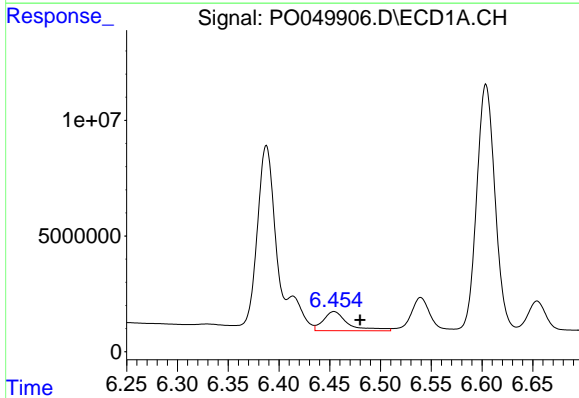
R.T.: 5.718 min
 Delta R.T.: -0.026 min
 Response: 96662959
 Conc: 16261.08 ng/ml

Instrument :
 ECD_O
 ClientSampled :



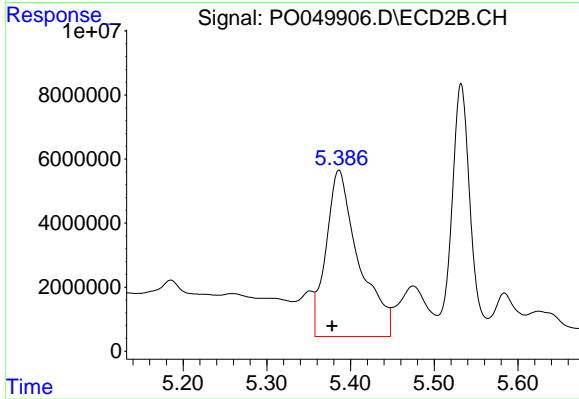
#19 AR-1242-4

R.T.: 4.875 min
 Delta R.T.: 0.014 min
 Response: 32397626
 Conc: 5411.18 ng/ml



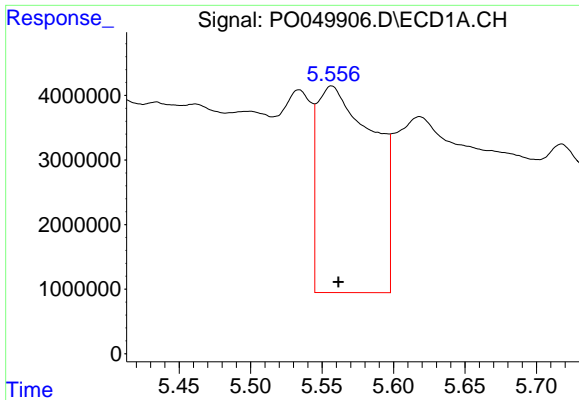
#20 AR-1242-5

R.T.: 6.454 min
 Delta R.T.: -0.026 min
 Response: 14114006
 Conc: 1961.74 ng/ml



#20 AR-1242-5

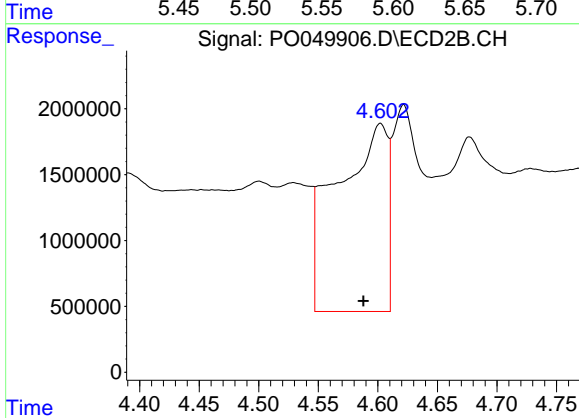
R.T.: 5.386 min
 Delta R.T.: 0.008 min
 Response: 140820440
 Conc: 17545.34 ng/ml



#21 AR-1248-1

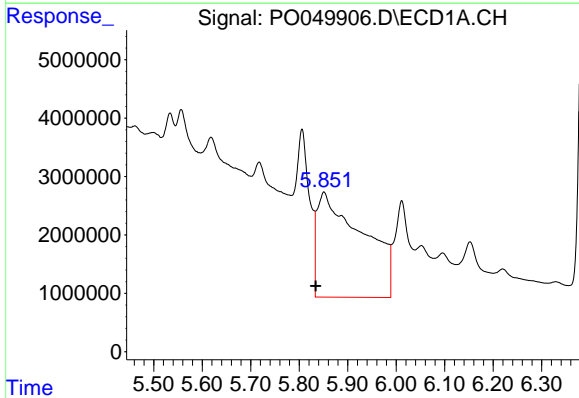
R.T.: 5.557 min
 Delta R.T.: -0.005 min
 Response: 88222877
 Conc: 14679.19 ng/ml

Instrument :
 ECD_O
 ClientSampleId :



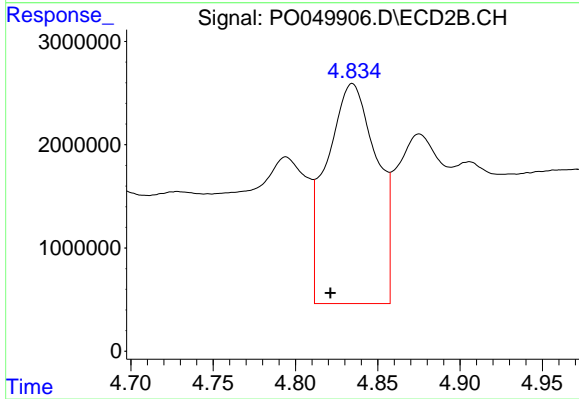
#21 AR-1248-1

R.T.: 4.602 min
 Delta R.T.: 0.014 min
 Response: 42085274
 Conc: 6342.57 ng/ml



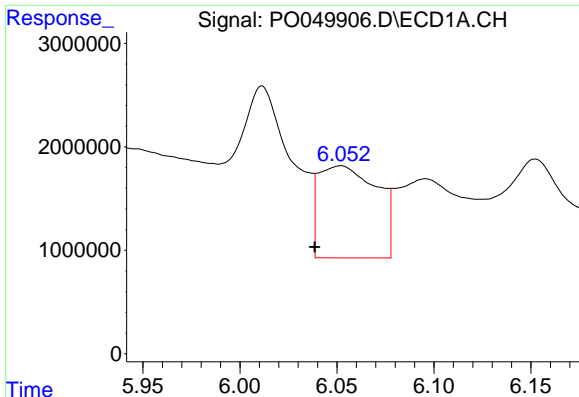
#22 AR-1248-2

R.T.: 5.851 min
 Delta R.T.: 0.017 min
 Response: 116980063
 Conc: 14055.33 ng/ml



#22 AR-1248-2

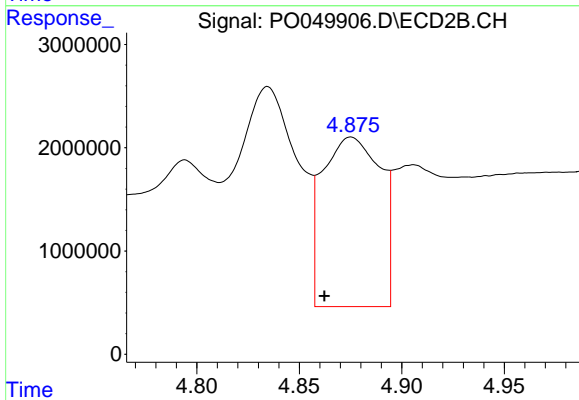
R.T.: 4.835 min
 Delta R.T.: 0.013 min
 Response: 45065879
 Conc: 5297.28 ng/ml



#23 AR-1248-3

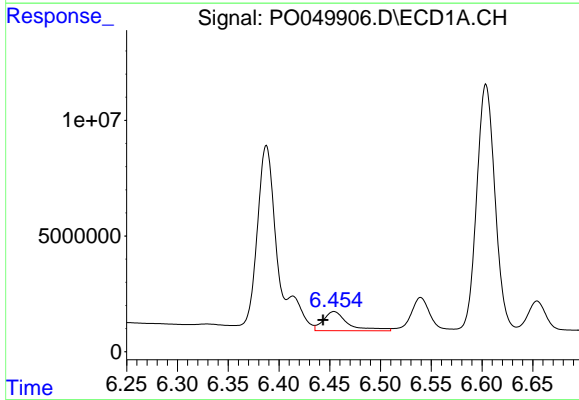
R.T.: 6.052 min
 Delta R.T.: 0.014 min
 Response: 18608649
 Conc: 1924.61 ng/ml

Instrument :
 ECD_O
 ClientSampleId :



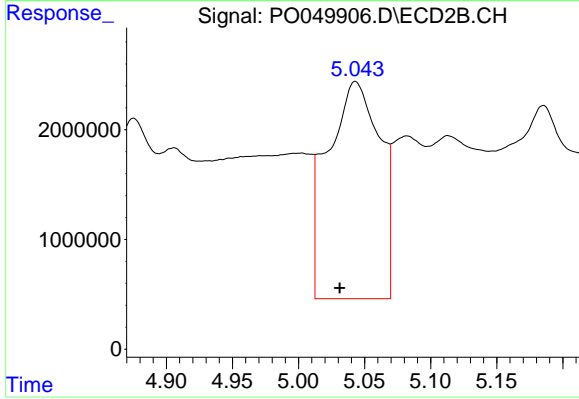
#23 AR-1248-3

R.T.: 4.875 min
 Delta R.T.: 0.013 min
 Response: 32397626
 Conc: 3691.20 ng/ml



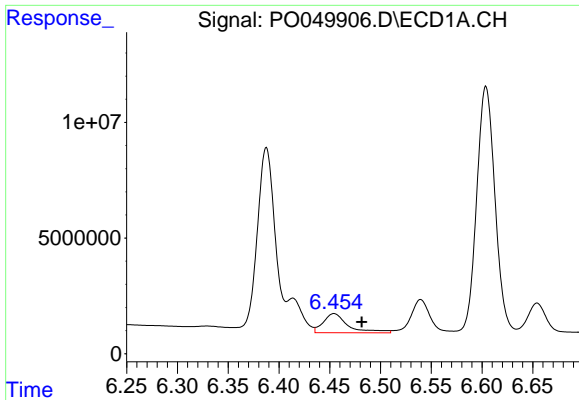
#24 AR-1248-4

R.T.: 6.454 min
 Delta R.T.: 0.011 min
 Response: 14114006
 Conc: 1140.75 ng/ml



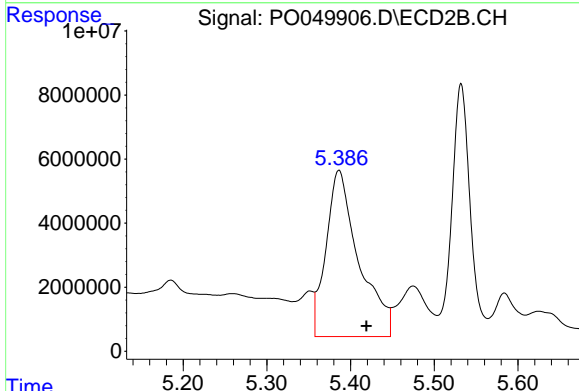
#24 AR-1248-4

R.T.: 5.043 min
 Delta R.T.: 0.012 min
 Response: 54530399
 Conc: 5017.59 ng/ml

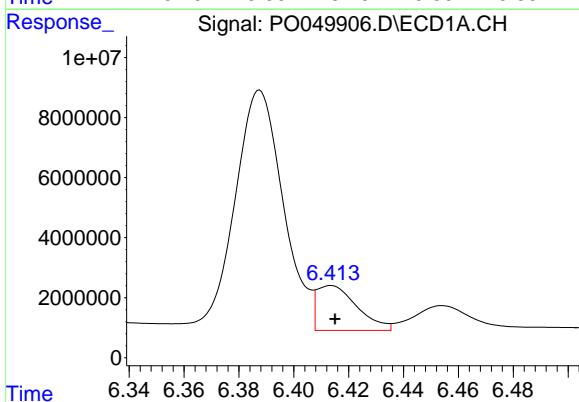


#25 AR-1248-5
 R.T.: 6.454 min
 Delta R.T.: -0.027 min
 Response: 14114006
 Conc: 1202.59 ng/ml

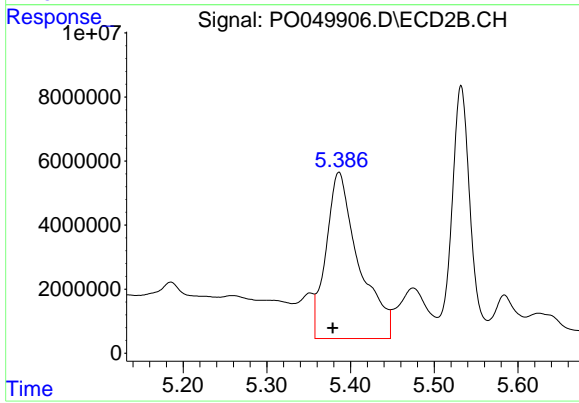
Instrument :
 ECD_O
 ClientSampleId :



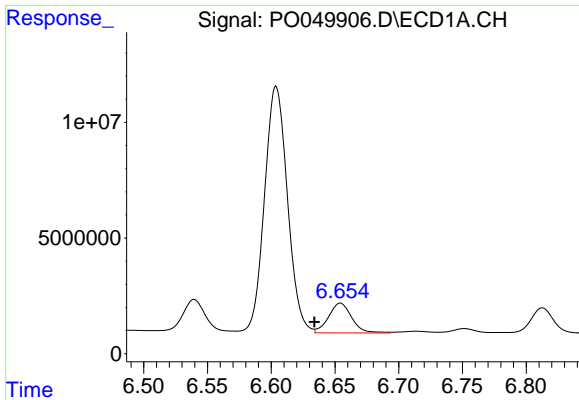
#25 AR-1248-5
 R.T.: 5.386 min
 Delta R.T.: -0.033 min
 Response: 140820440
 Conc: 12404.35 ng/ml



#26 AR-1254-1
 R.T.: 6.414 min
 Delta R.T.: -0.001 min
 Response: 15173520
 Conc: 1103.42 ng/ml

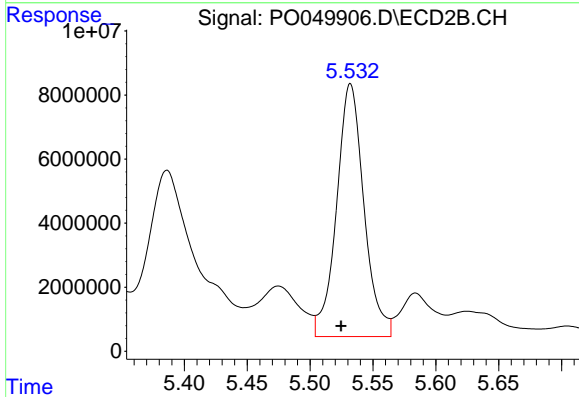


#26 AR-1254-1
 R.T.: 5.386 min
 Delta R.T.: 0.007 min
 Response: 140820440
 Conc: 7183.40 ng/ml

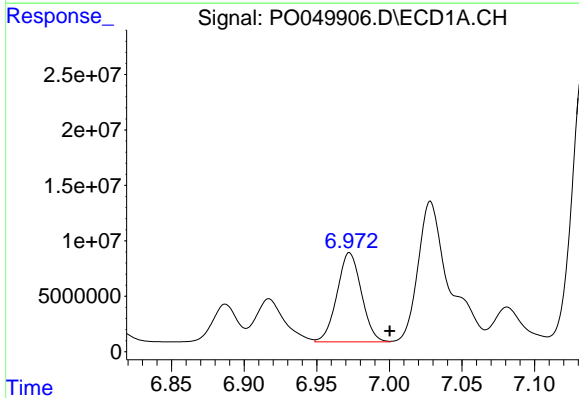


#27 AR-1254-2
 R.T.: 6.654 min
 Delta R.T.: 0.020 min
 Response: 16359015
 Conc: 740.92 ng/ml

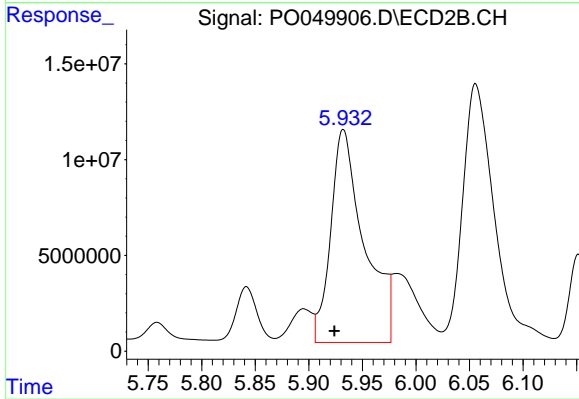
Instrument :
 ECD_O
 ClientSampleId :



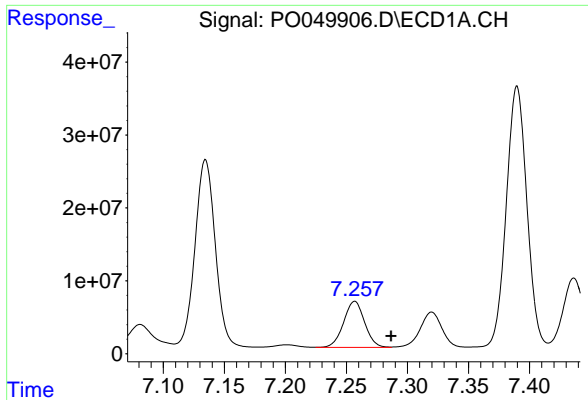
#27 AR-1254-2
 R.T.: 5.532 min
 Delta R.T.: 0.007 min
 Response: 119627818
 Conc: 7147.34 ng/ml



#28 AR-1254-3
 R.T.: 6.973 min
 Delta R.T.: -0.028 min
 Response: 94042914
 Conc: 3854.36 ng/ml



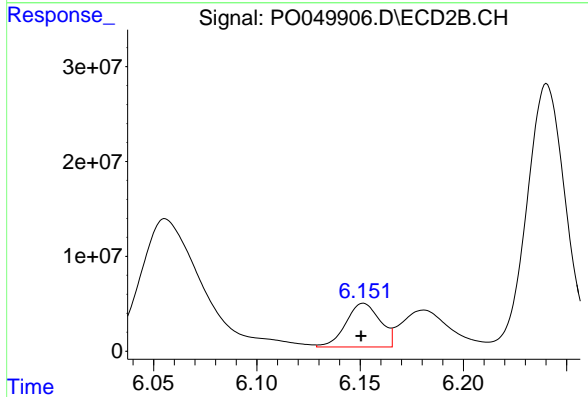
#28 AR-1254-3
 R.T.: 5.932 min
 Delta R.T.: 0.008 min
 Response: 240989096
 Conc: 8633.33 ng/ml



#29 AR-1254-4

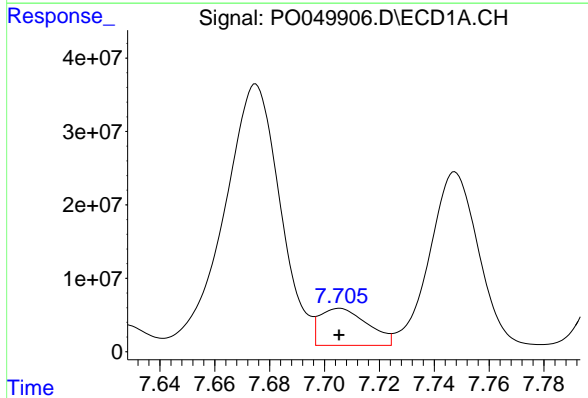
R.T.: 7.257 min
 Delta R.T.: -0.030 min
 Response: 75751123
 Conc: 3693.57 ng/ml

Instrument :
 ECD_O
 ClientSampled :



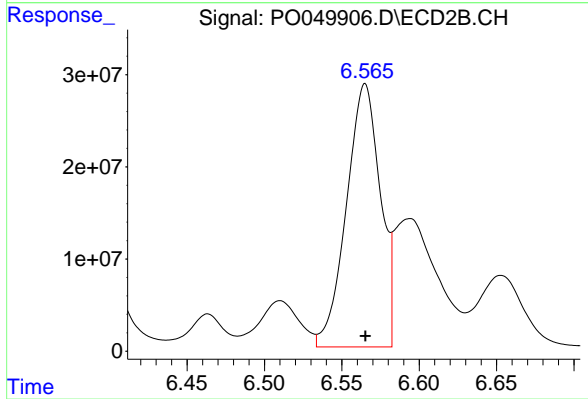
#29 AR-1254-4

R.T.: 6.152 min
 Delta R.T.: 0.001 min
 Response: 53042467
 Conc: 2643.37 ng/ml



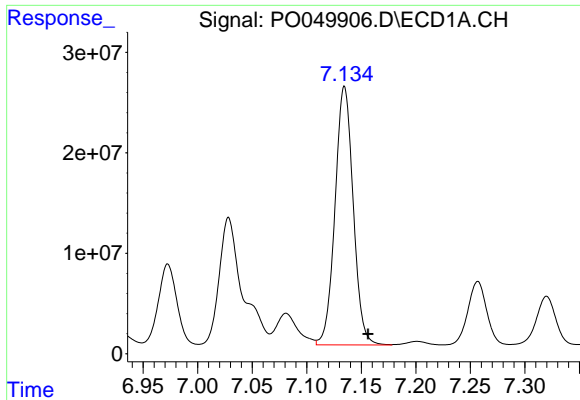
#30 AR-1254-5

R.T.: 7.705 min
 Delta R.T.: 0.000 min
 Response: 60917796
 Conc: 3161.10 ng/ml



#30 AR-1254-5

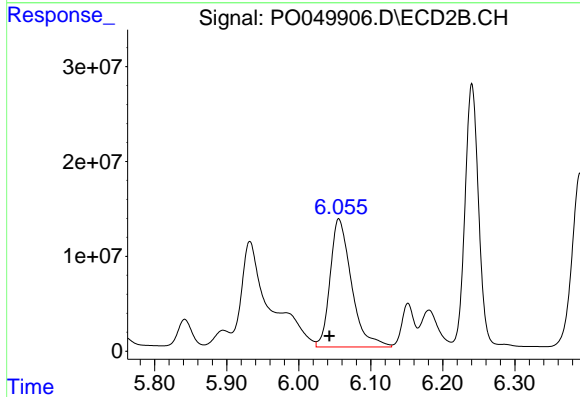
R.T.: 6.565 min
 Delta R.T.: 0.000 min
 Response: 435328763
 Conc: 16269.24 ng/ml



#31 AR-1260-1

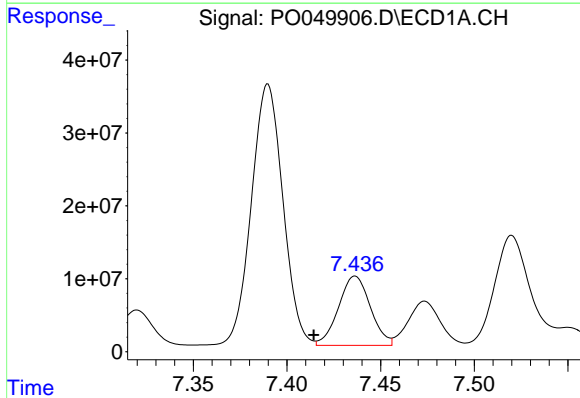
R.T.: 7.135 min
 Delta R.T.: -0.022 min
 Response: 298948410
 Conc: 16202.41 ng/ml

Instrument :
 ECD_O
 ClientSampled :



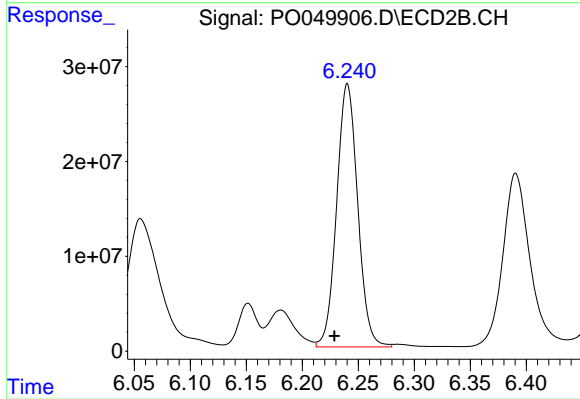
#31 AR-1260-1

R.T.: 6.056 min
 Delta R.T.: 0.013 min
 Response: 276946543
 Conc: 13412.37 ng/ml



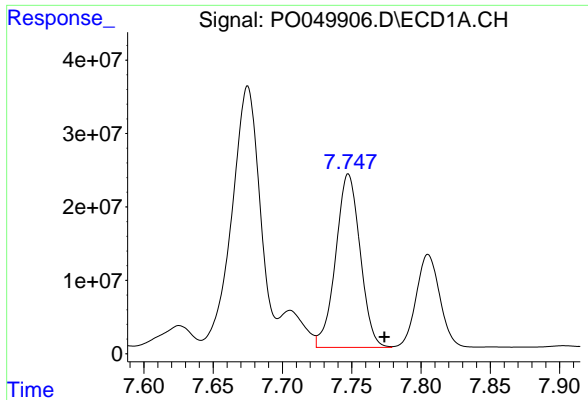
#32 AR-1260-2

R.T.: 7.436 min
 Delta R.T.: 0.022 min
 Response: 112549387
 Conc: 4693.37 ng/ml



#32 AR-1260-2

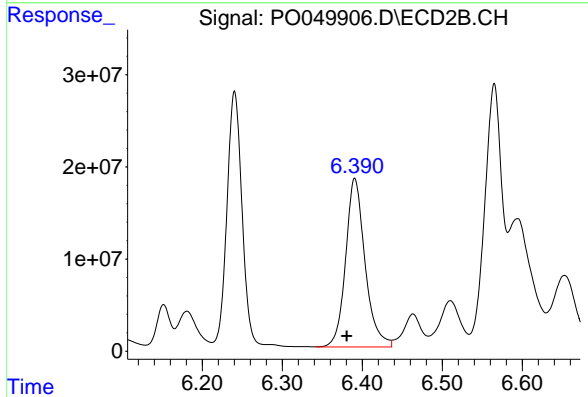
R.T.: 6.240 min
 Delta R.T.: 0.011 min
 Response: 362820617
 Conc: 12939.85 ng/ml



#33 AR-1260-3

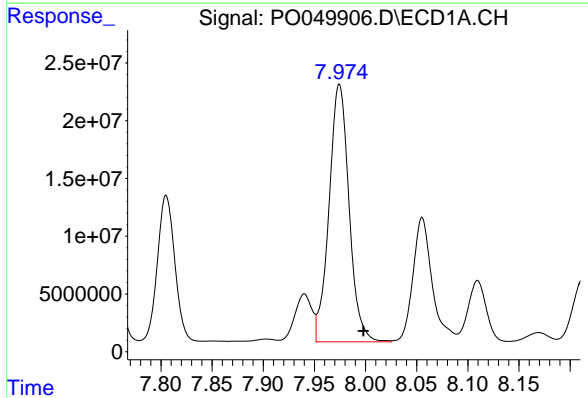
R.T.: 7.748 min
 Delta R.T.: -0.026 min
 Response: 290451936
 Conc: 15362.57 ng/ml

Instrument :
 ECD_O
 ClientSampled :



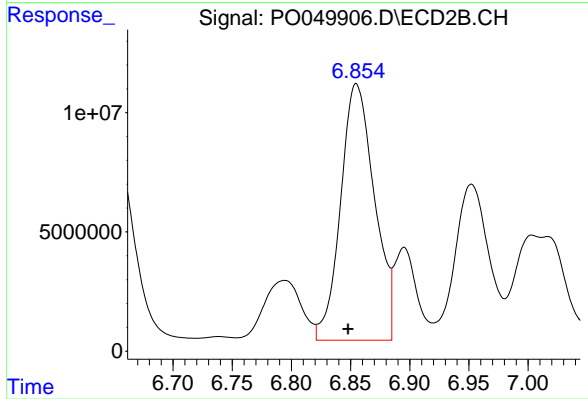
#33 AR-1260-3

R.T.: 6.391 min
 Delta R.T.: 0.010 min
 Response: 309532543
 Conc: 12701.77 ng/ml



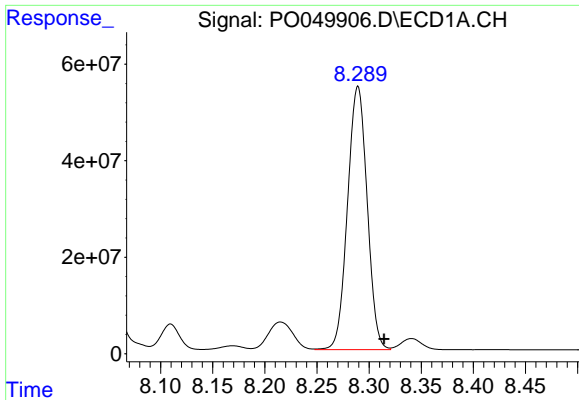
#34 AR-1260-4

R.T.: 7.974 min
 Delta R.T.: -0.024 min
 Response: 304074526
 Conc: 16014.34 ng/ml



#34 AR-1260-4

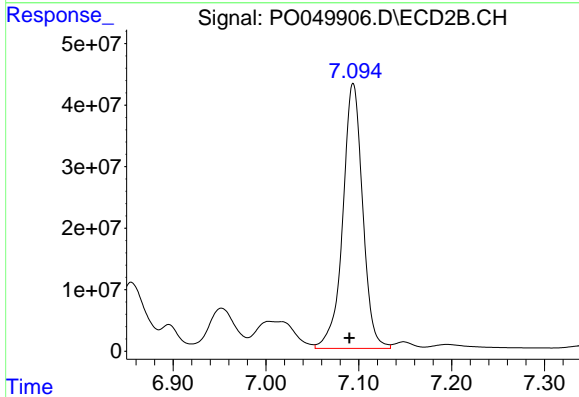
R.T.: 6.855 min
 Delta R.T.: 0.007 min
 Response: 214582676
 Conc: 11110.78 ng/ml



#35 AR-1260-5

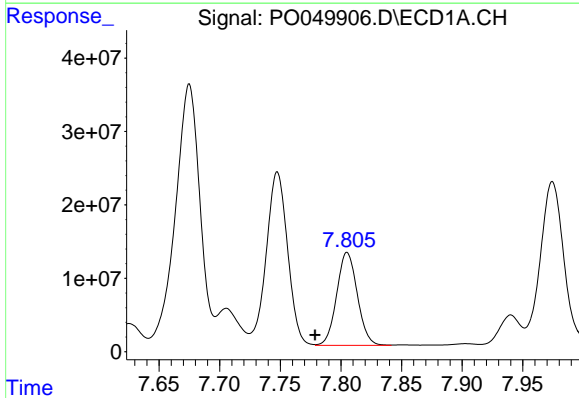
R.T.: 8.289 min
 Delta R.T.: -0.025 min
 Response: 714818054
 Conc: 16897.17 ng/ml

Instrument :
 ECD_O
 ClientSampleId :



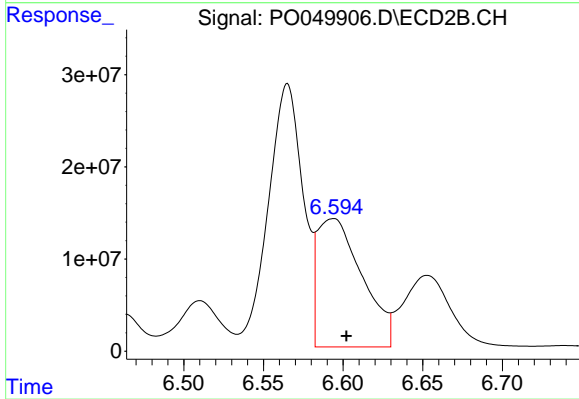
#35 AR-1260-5

R.T.: 7.094 min
 Delta R.T.: 0.004 min
 Response: 640320079
 Conc: 12489.31 ng/ml



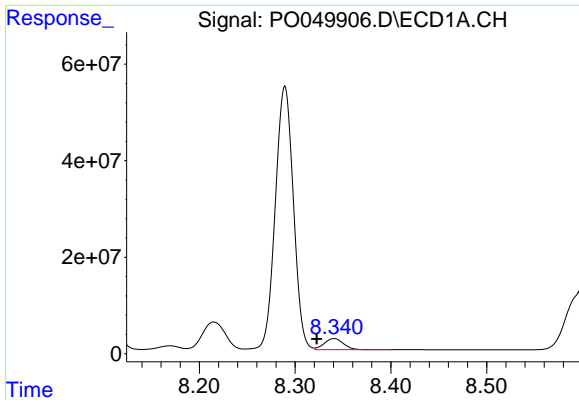
#36 AR-1262-1

R.T.: 7.805 min
 Delta R.T.: 0.026 min
 Response: 150397615
 Conc: 7124.44 ng/ml



#36 AR-1262-1

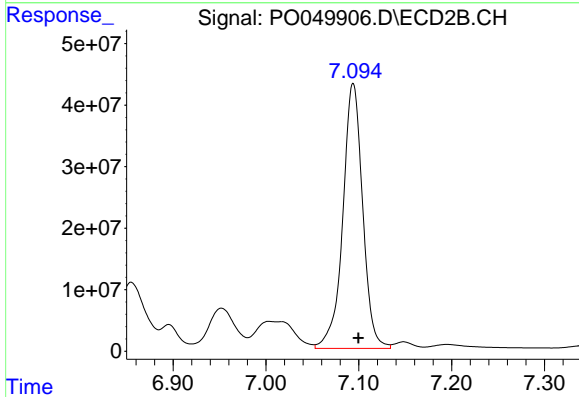
R.T.: 6.594 min
 Delta R.T.: -0.008 min
 Response: 271461868
 Conc: 11066.49 ng/ml



#37 AR-1262-2

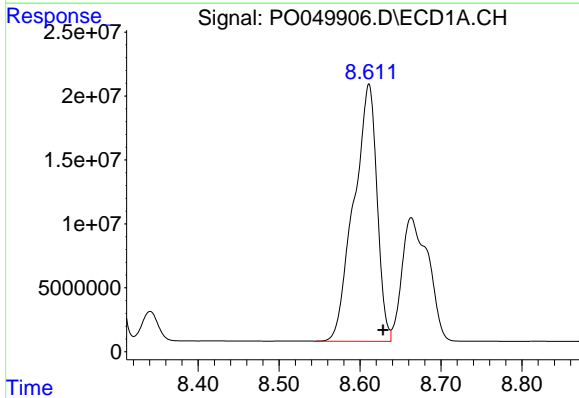
R.T.: 8.341 min
 Delta R.T.: 0.018 min
 Response: 32134309
 Conc: 862.52 ng/ml

Instrument :
 ECD_O
 ClientSampled :



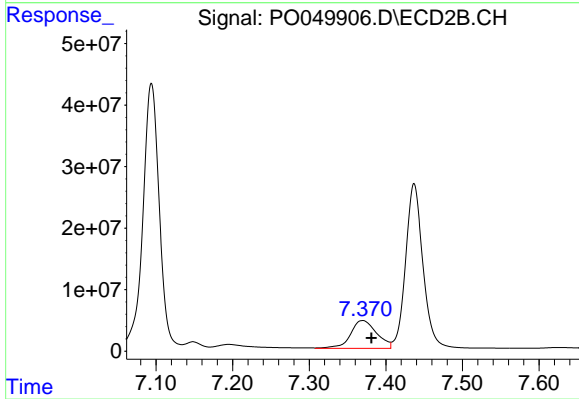
#37 AR-1262-2

R.T.: 7.094 min
 Delta R.T.: -0.006 min
 Response: 640320079
 Conc: 15130.37 ng/ml



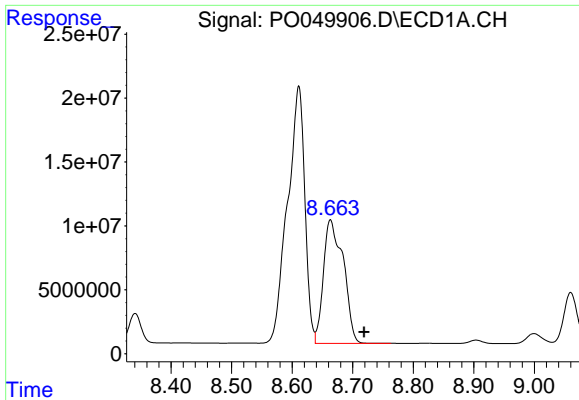
#38 AR-1262-3

R.T.: 8.611 min
 Delta R.T.: -0.017 min
 Response: 399750970
 Conc: 16571.92 ng/ml



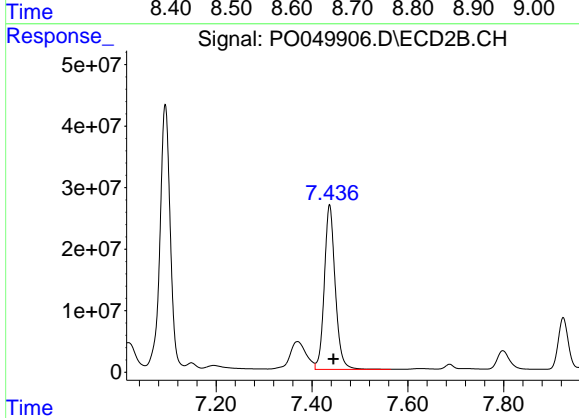
#38 AR-1262-3

R.T.: 7.370 min
 Delta R.T.: -0.011 min
 Response: 107788240
 Conc: 6404.30 ng/ml

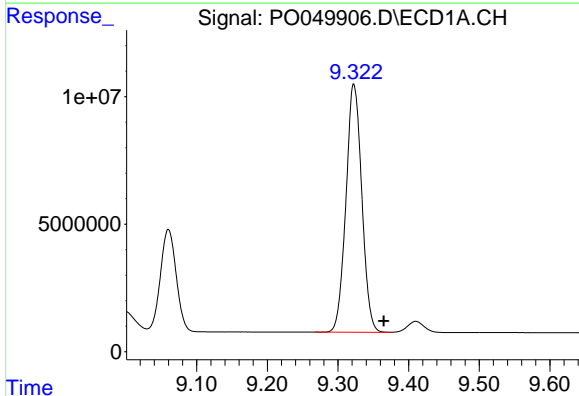


#39 AR-1262-4
 R.T.: 8.663 min
 Delta R.T.: -0.055 min
 Response: 220287012
 Conc: 11615.00 ng/ml

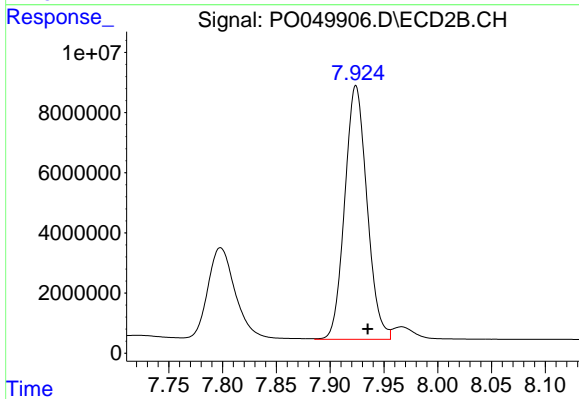
Instrument :
 ECD_O
 ClientSampled :



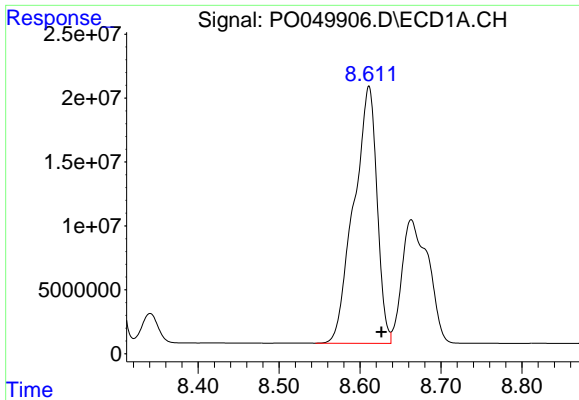
#39 AR-1262-4
 R.T.: 7.437 min
 Delta R.T.: -0.008 min
 Response: 423754417
 Conc: 14380.24 ng/ml



#40 AR-1262-5
 R.T.: 9.322 min
 Delta R.T.: -0.042 min
 Response: 151699368
 Conc: 11103.75 ng/ml

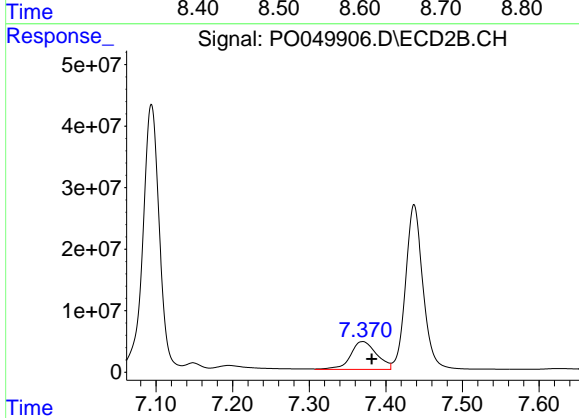


#40 AR-1262-5
 R.T.: 7.924 min
 Delta R.T.: -0.011 min
 Response: 121565603
 Conc: 9120.49 ng/ml

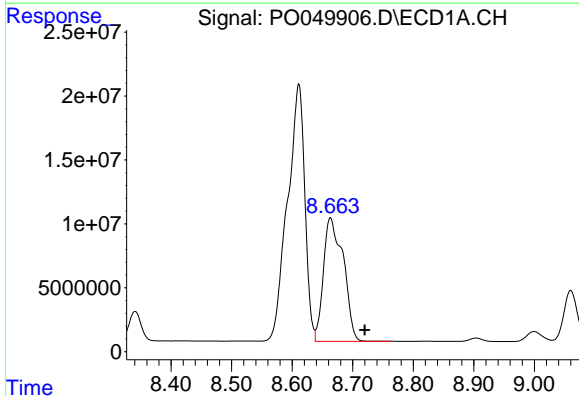


#41 AR-1268-1
 R.T.: 8.611 min
 Delta R.T.: -0.015 min
 Response: 399750970
 Conc: 7995.51 ng/ml

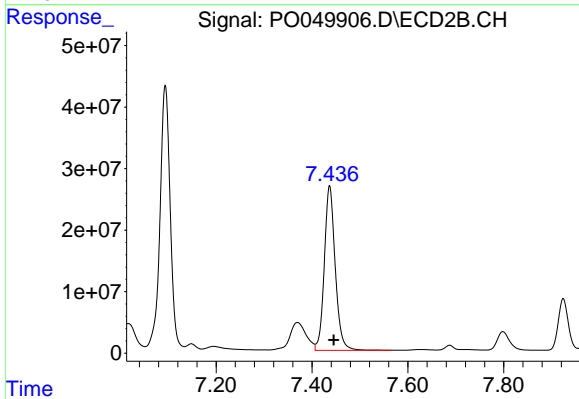
Instrument :
 ECD_O
 ClientSampleId :



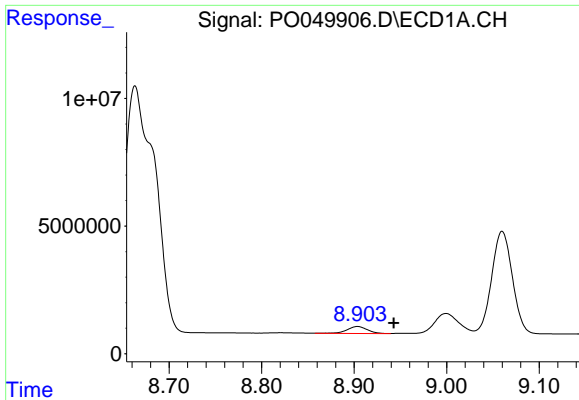
#41 AR-1268-1
 R.T.: 7.370 min
 Delta R.T.: -0.012 min
 Response: 107788240
 Conc: 2015.04 ng/ml



#42 AR-1268-2
 R.T.: 8.663 min
 Delta R.T.: -0.057 min
 Response: 220287012
 Conc: 4856.90 ng/ml

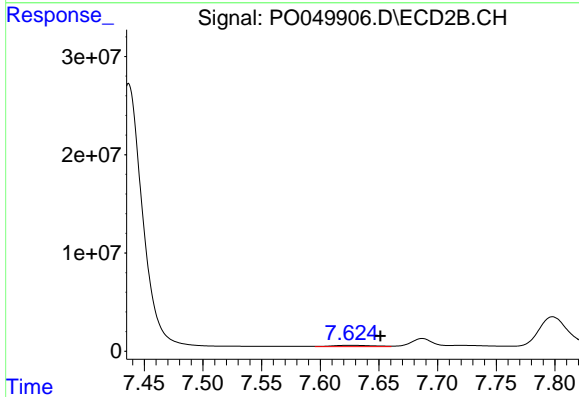


#42 AR-1268-2
 R.T.: 7.437 min
 Delta R.T.: -0.009 min
 Response: 423754417
 Conc: 8736.73 ng/ml

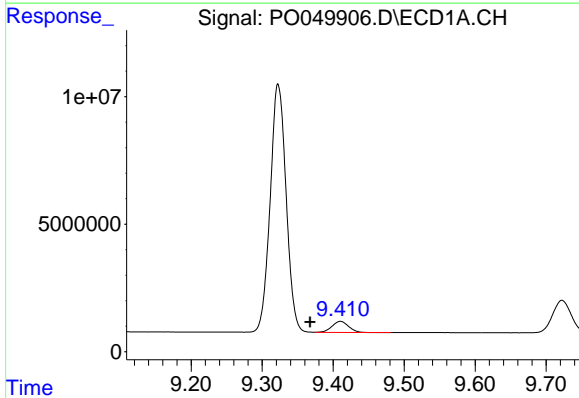


#43 AR-1268-3
 R.T.: 8.904 min
 Delta R.T.: -0.039 min
 Response: 4227808
 Conc: 105.94 ng/ml

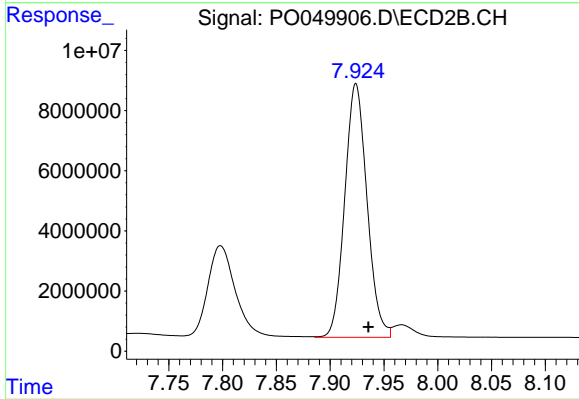
Instrument :
 ECD_O
 ClientSampleId :



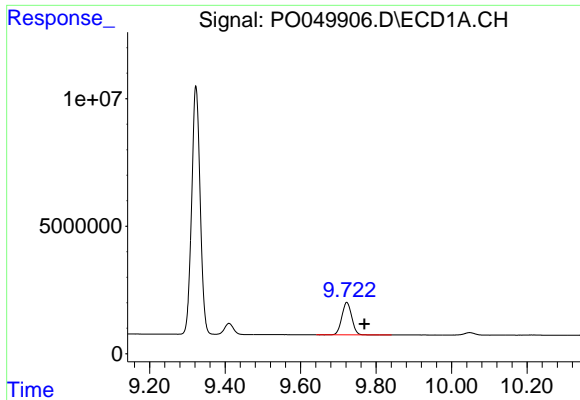
#43 AR-1268-3
 R.T.: 7.625 min
 Delta R.T.: -0.026 min
 Response: 3629839
 Conc: 90.10 ng/ml



#44 AR-1268-4
 R.T.: 9.410 min
 Delta R.T.: 0.043 min
 Response: 7088087
 Conc: 415.87 ng/ml



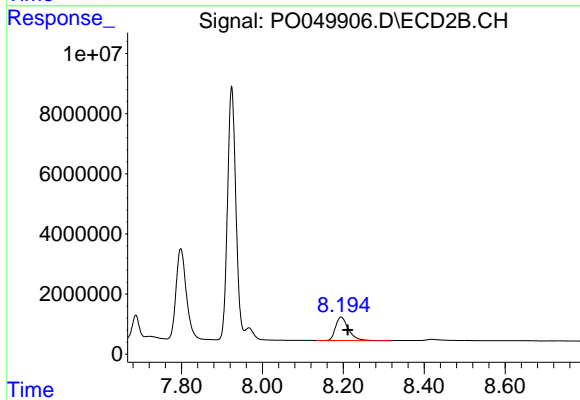
#44 AR-1268-4
 R.T.: 7.924 min
 Delta R.T.: -0.011 min
 Response: 121565603
 Conc: 7300.21 ng/ml



#45 AR-1268-5

R.T.: 9.722 min
Delta R.T.: -0.047 min
Response: 23269495
Conc: 191.64 ng/ml

Instrument :
ECD_O
ClientSampleId :



#45 AR-1268-5

R.T.: 8.195 min
Delta R.T.: -0.016 min
Response: 17194315
Conc: 165.55 ng/ml