

Data Path : Z:\pestpcbsrv\HPCHEM1\ECD_0\Data\PO101118\
 Data File : PO049907.D
 Signal(s) : Signal #1: ECD1A.CH Signal #2: ECD2B.CH
 Acq On : 11 Oct 2018 12:58
 Operator : SM/SJ
 Sample : J5382-01RE
 Misc :
 ALS Vial : 14 Sample Multiplier: 1

Instrument :
 ECD_0
 ClientSampled :

Integration File signal 1: autoint1.e
 Integration File signal 2: autoint2.e
 Quant Time: Oct 11 14:42:31 2018
 Quant Method : Z:\pestpcbsrv\HPCHEM1\ECD_0\methods\PO100818.M
 Quant Title : GC EXTRACTABLES
 QLast Update : Mon Oct 08 15:27:38 2018
 Response via : Initial Calibration
 Integrator: ChemStation 6890 Scale Mode: Small noise peaks clipped

Volume Inj. : 2 µl
 Signal #1 Phase : ZB-MR1 Signal #2 Phase: ZB-MR2
 Signal #1 Info : 30Mx0.32mmx 0.50µ Signal #2 Info : 30M x 0.32mm x 0.25µm

Compound	RT#1	RT#2	Resp#1	Resp#2	ng/ml	ng/ml
System Monitoring Compounds						
1) SA Tetrachlo...	4.363	3.547	3395512	3321274	15.021	13.770
2) SA Decachlor...	10.046	8.421	3171291	2044129	9.518	7.815
Target Compounds						
6) L1 AR-1016-4	5.805	4.857	337105	290799	40.128	40.829
7) L1 AR-1016-5	6.012	5.067	219338	311555	25.213	32.098 #
8) L2 AR-1221-1	0.000	3.711	0	1339283	N.D.	504.119 #
10) L2 AR-1221-3	4.824	0.000	193092	0	32.638	N.D. #
11) L3 AR-1232-1	4.824	0.000	193092	0	41.135	N.D. #
14) L3 AR-1232-4	5.805	4.857	337105	290799	121.656	105.918
15) L3 AR-1232-5	5.805	5.067	337105	311555	173.747	99.704 #
19) L4 AR-1242-4	5.805	4.857	337105	290799	56.709	48.570
20) L4 AR-1242-5	6.454	5.404	304187	1766133	42.280	220.049 #
22) L5 AR-1248-2	5.805	4.857	337105	290799	40.504	34.182
23) L5 AR-1248-3	6.012	4.857	219338	290799	22.685	33.132 #
24) L5 AR-1248-4	6.454	5.067	304187	311555	24.586	28.668
25) L5 AR-1248-5	6.454	5.404	304187	1766133	25.918	155.572 #
26) L6 AR-1254-1	6.413	5.404	273886	1766133	19.917	90.092 #
27) L6 AR-1254-2	6.655	5.549	498956	2016867	22.598	120.501 #
28) L6 AR-1254-3	7.028	5.908	2468991	650231	101.192	23.294 #
29) L6 AR-1254-4	7.256	6.163	1693976	1686584	82.597	84.051
30) L6 AR-1254-5	7.705	6.573	906140	7361820	47.021	275.128 #
31) L7 AR-1260-1	7.133	6.071	4174611	5386943	226.256	260.887
32) L7 AR-1260-2	7.436	6.252	1519796	6117993	63.376	218.196 #
33) L7 AR-1260-3	7.748	6.402	3761193	5068009	198.937	207.967
34) L7 AR-1260-4	7.973	6.864	4678179	3260796	246.380	168.839 #
35) L7 AR-1260-5	8.288	7.100	9455172	9363253	223.505	182.628
36) L8 AR-1262-1	7.806	6.600	2119915	4204159	100.422	171.388 #
37) L8 AR-1262-2	8.341	7.100	689006	9363253	18.494	221.248 #
38) L8 AR-1262-3	8.610	7.374	5780078	1501311	239.617	89.201 #
39) L8 AR-1262-4	8.660	7.442	3045834	6373775	160.597	216.296 #
40) L8 AR-1262-5	9.321	7.927	2356933	1611983	172.518	120.939 #
41) L9 AR-1268-1	8.610	7.374	5780078	1501311	115.609	28.066 #
42) L9 AR-1268-2	8.660	7.442	3045834	6373775	67.155	131.411 #
43) L9 AR-1268-3	8.997	0.000	311749	0	7.812	N.D. #
44) L9 AR-1268-4	9.321	7.927	2356933	1611983	138.285	96.802 #
45) L9 AR-1268-5	9.720	0.000	380110	0	3.131	N.D. #

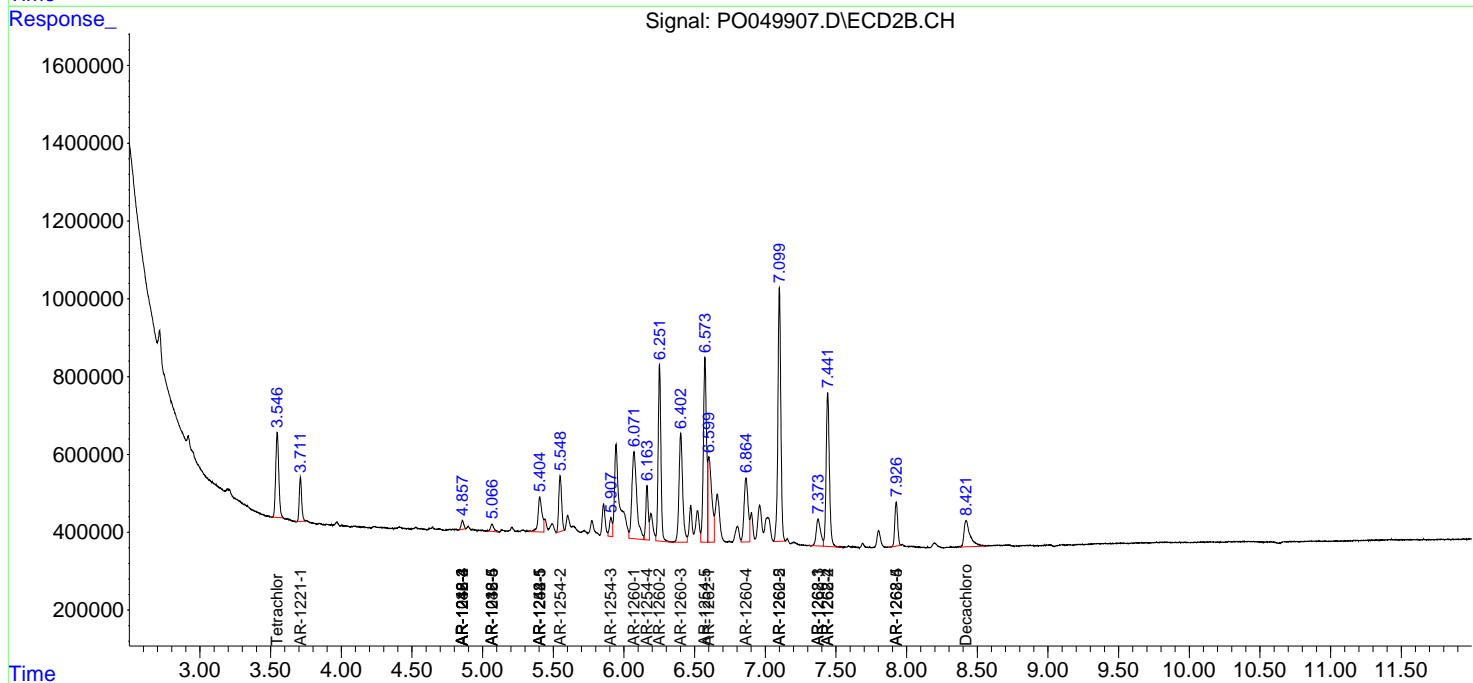
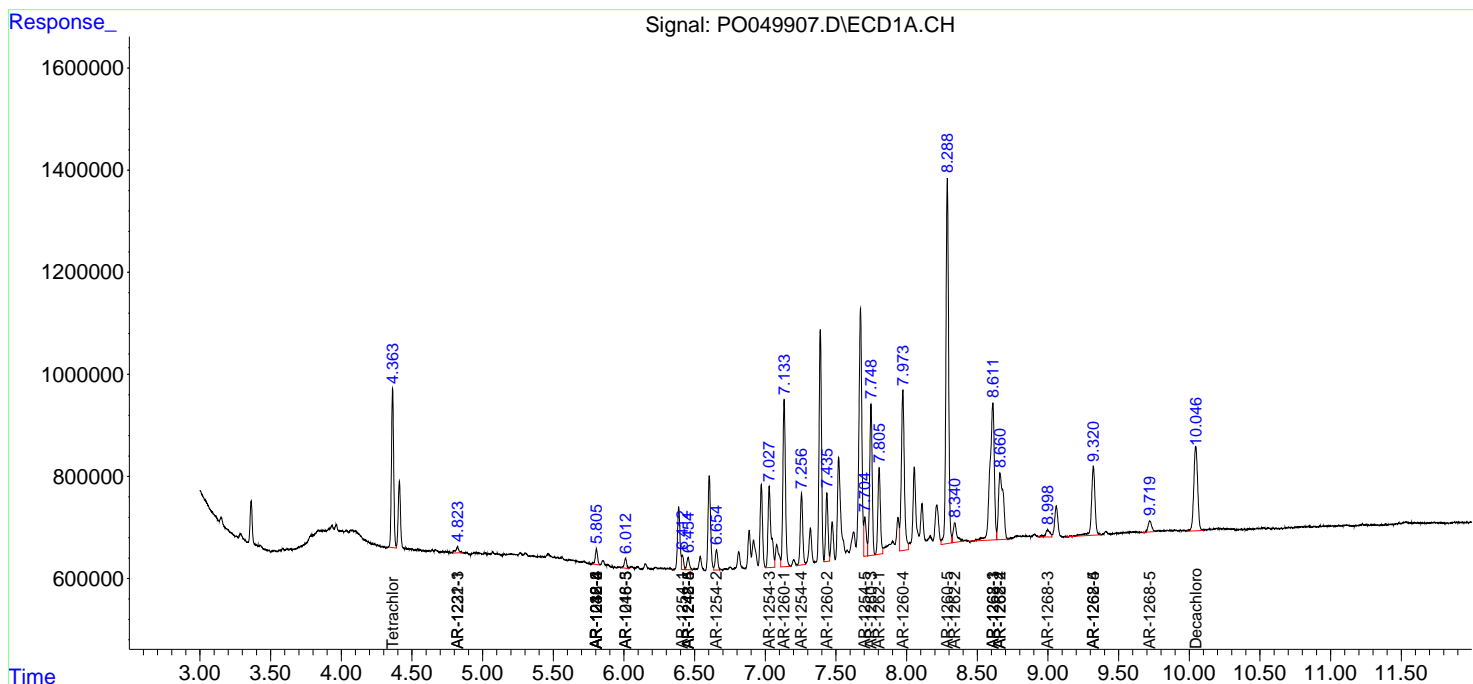
(f)=RT Delta > 1/2 Window (#)=Amounts differ by > 25% (m)=manual int.

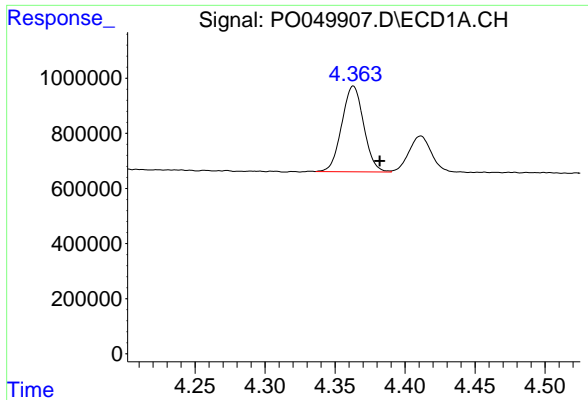
Data Path : Z:\pestpcbsrv\HPCHEM1\ECD_0\Data\PO101118\
 Data File : P0049907.D
 Signal(s) : Signal #1: ECD1A.CH Signal #2: ECD2B.CH
 Acq On : 11 Oct 2018 12:58
 Operator : SM/SJ
 Sample : J5382-01RE
 Misc :
 ALS Vial : 14 Sample Multiplier: 1

Instrument :
 ECD_O
 ClientSampled :

Integration File signal 1: autoint1.e
 Integration File signal 2: autoint2.e
 Quant Time: Oct 11 14:42:31 2018
 Quant Method : Z:\pestpcbsrv\HPCHEM1\ECD_0\methods\PO100818.M
 Quant Title : GC EXTRACTABLES
 QLast Update : Mon Oct 08 15:27:38 2018
 Response via : Initial Calibration
 Integrator: ChemStation 6890 Scale Mode: Small noise peaks clipped

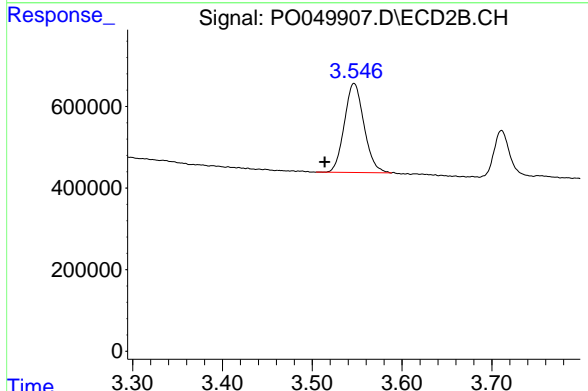
Volume Inj. : 2 µl
 Signal #1 Phase : ZB-MR1 Signal #2 Phase: ZB-MR2
 Signal #1 Info : 30Mx0.32mmx 0.50µ Signal #2 Info : 30M x 0.32mm x 0.25µm



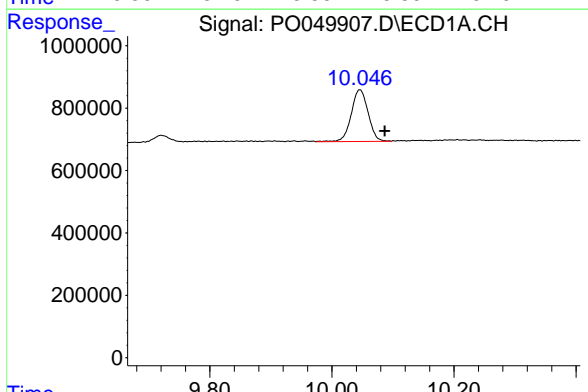


#1 Tetrachloro-m-xylene
 R.T.: 4.363 min
 Delta R.T.: -0.019 min
 Response: 3395512
 Conc: 15.02 ng/ml

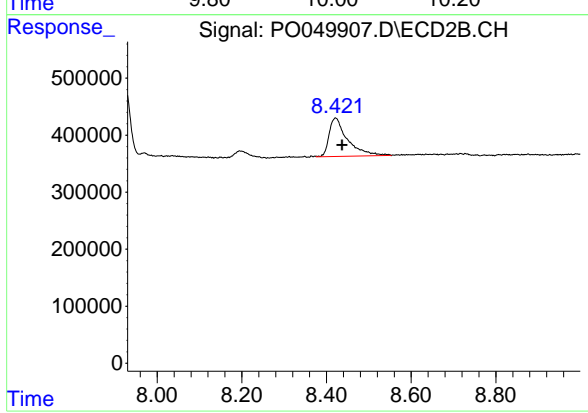
Instrument :
 ECD_O
 ClientSampleId :



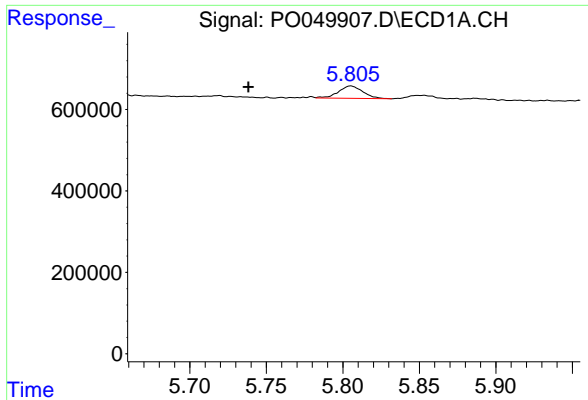
#1 Tetrachloro-m-xylene
 R.T.: 3.547 min
 Delta R.T.: 0.033 min
 Response: 3321274
 Conc: 13.77 ng/ml



#2 Decachlorobiphenyl
 R.T.: 10.046 min
 Delta R.T.: -0.041 min
 Response: 3171291
 Conc: 9.52 ng/ml

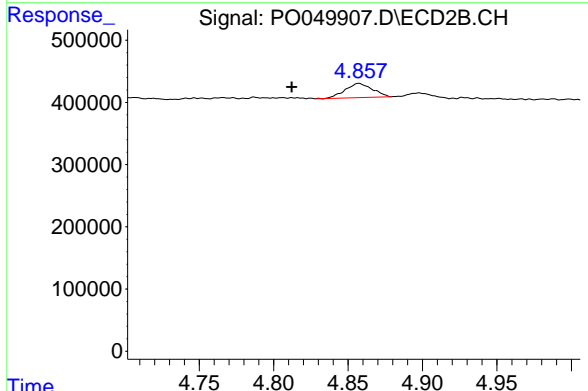


#2 Decachlorobiphenyl
 R.T.: 8.421 min
 Delta R.T.: -0.015 min
 Response: 2044129
 Conc: 7.82 ng/ml

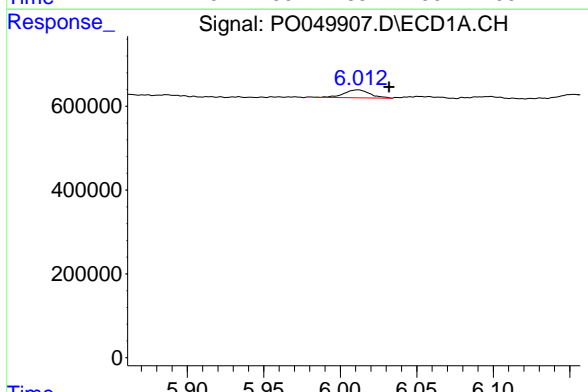


#6 AR-1016-4
 R.T.: 5.805 min
 Delta R.T.: 0.067 min
 Response: 337105
 Conc: 40.13 ng/ml

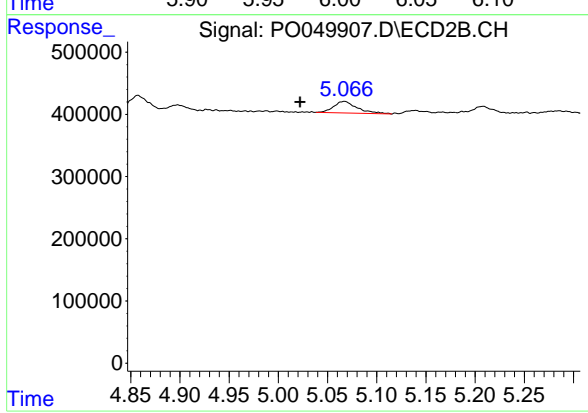
Instrument :
 ECD_O
 ClientSampleId :



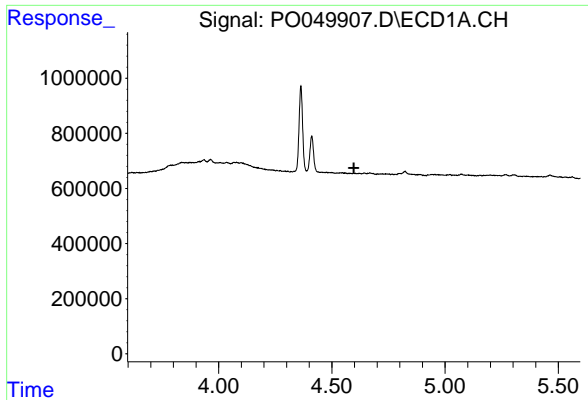
#6 AR-1016-4
 R.T.: 4.857 min
 Delta R.T.: 0.045 min
 Response: 290799
 Conc: 40.83 ng/ml



#7 AR-1016-5
 R.T.: 6.012 min
 Delta R.T.: -0.020 min
 Response: 219338
 Conc: 25.21 ng/ml



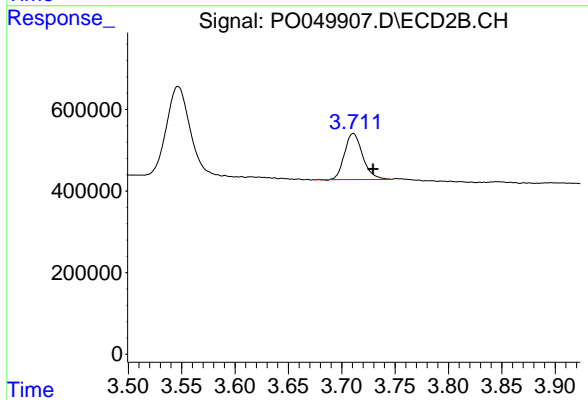
#7 AR-1016-5
 R.T.: 5.067 min
 Delta R.T.: 0.045 min
 Response: 311555
 Conc: 32.10 ng/ml



#8 AR-1221-1

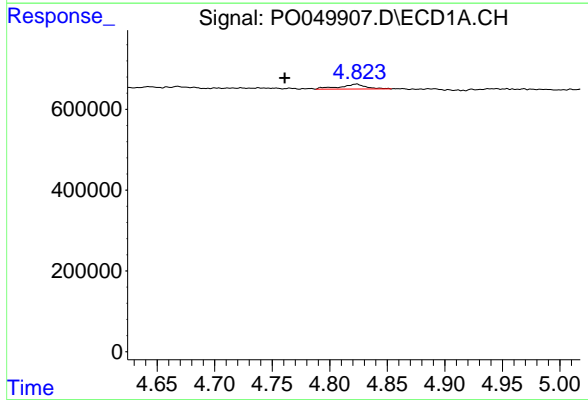
R.T.: 0.000 min
 Exp R.T.: 4.597 min
 Response: 0
 Conc: N.D.

Instrument :
 ECD_O
 ClientSampleId :



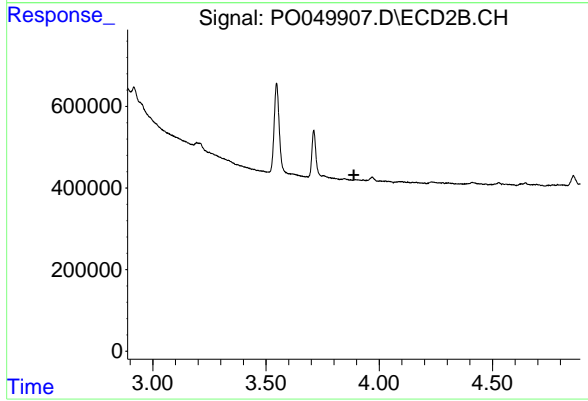
#8 AR-1221-1

R.T.: 3.711 min
 Delta R.T.: -0.018 min
 Response: 1339283
 Conc: 504.12 ng/ml



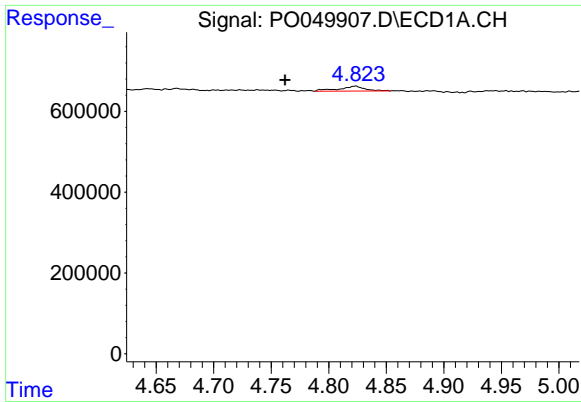
#10 AR-1221-3

R.T.: 4.824 min
 Delta R.T.: 0.063 min
 Response: 193092
 Conc: 32.64 ng/ml



#10 AR-1221-3

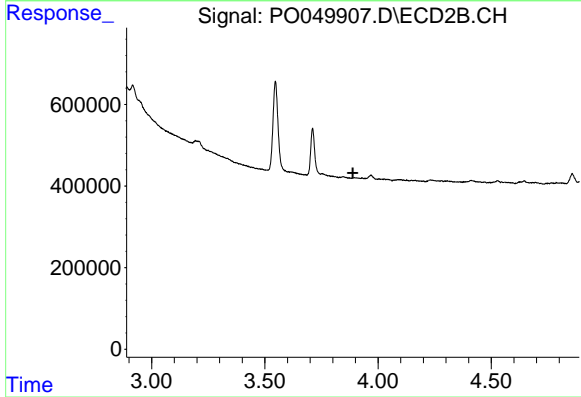
R.T.: 0.000 min
 Exp R.T.: 3.888 min
 Response: 0
 Conc: N.D.



#11 AR-1232-1

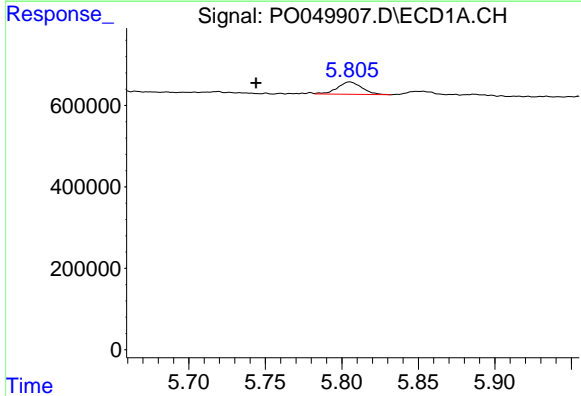
R.T.: 4.824 min
 Delta R.T.: 0.062 min
 Response: 193092
 Conc: 41.13 ng/ml

Instrument :
 ECD_O
 ClientSampleId :



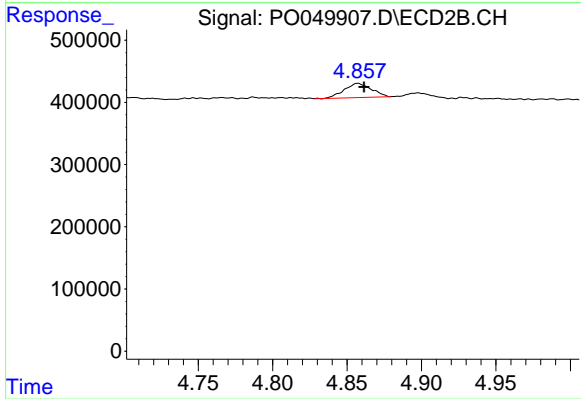
#11 AR-1232-1

R.T.: 0.000 min
 Exp R.T. : 3.889 min
 Response: 0
 Conc: N.D.



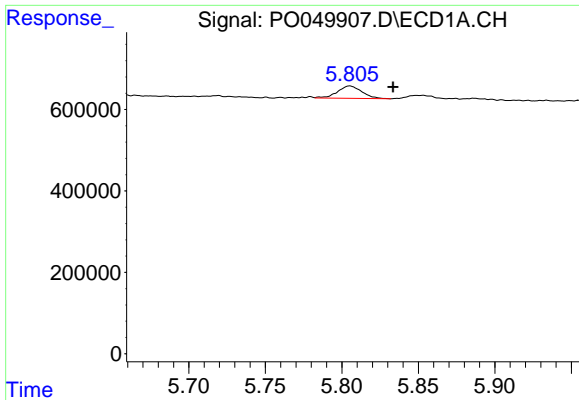
#14 AR-1232-4

R.T.: 5.805 min
 Delta R.T.: 0.061 min
 Response: 337105
 Conc: 121.66 ng/ml



#14 AR-1232-4

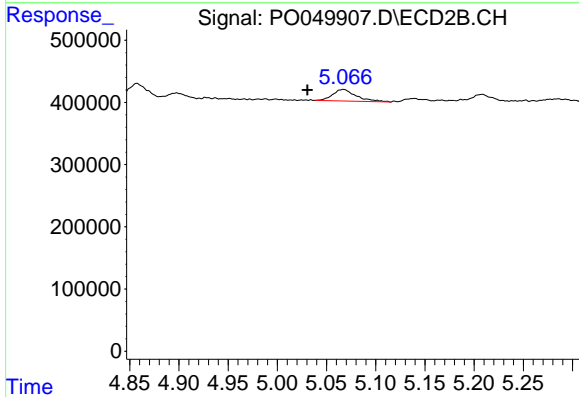
R.T.: 4.857 min
 Delta R.T.: -0.004 min
 Response: 290799
 Conc: 105.92 ng/ml



#15 AR-1232-5

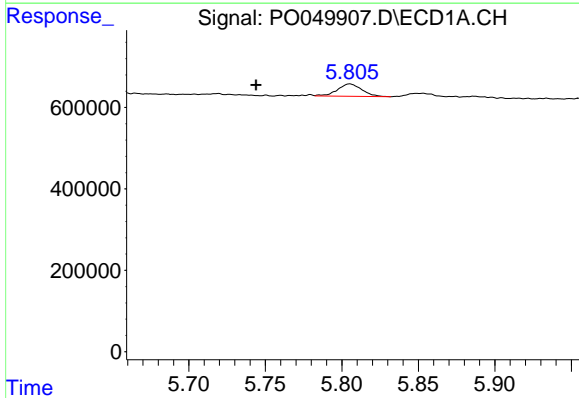
R.T.: 5.805 min
 Delta R.T.: -0.028 min
 Response: 337105
 Conc: 173.75 ng/ml

Instrument :
 ECD_O
 ClientSampleId :



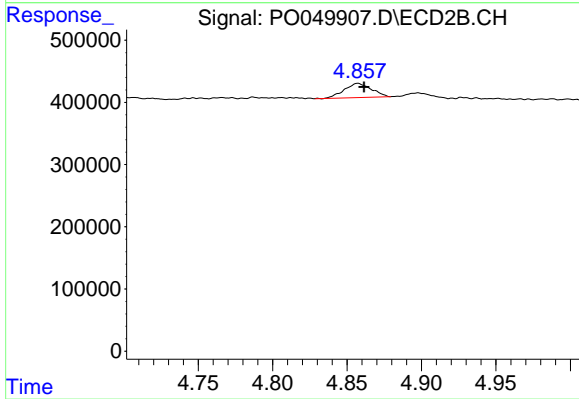
#15 AR-1232-5

R.T.: 5.067 min
 Delta R.T.: 0.037 min
 Response: 311555
 Conc: 99.70 ng/ml



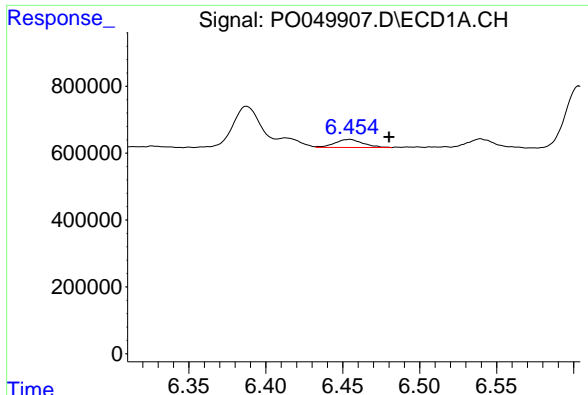
#19 AR-1242-4

R.T.: 5.805 min
 Delta R.T.: 0.061 min
 Response: 337105
 Conc: 56.71 ng/ml



#19 AR-1242-4

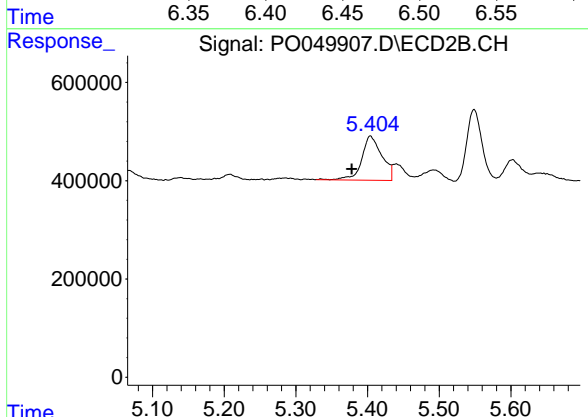
R.T.: 4.857 min
 Delta R.T.: -0.004 min
 Response: 290799
 Conc: 48.57 ng/ml



#20 AR-1242-5

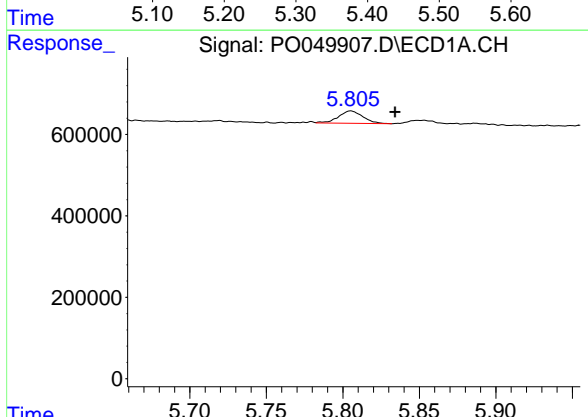
R.T.: 6.454 min
 Delta R.T.: -0.026 min
 Response: 304187
 Conc: 42.28 ng/ml

Instrument :
 ECD_O
 ClientSampleId :



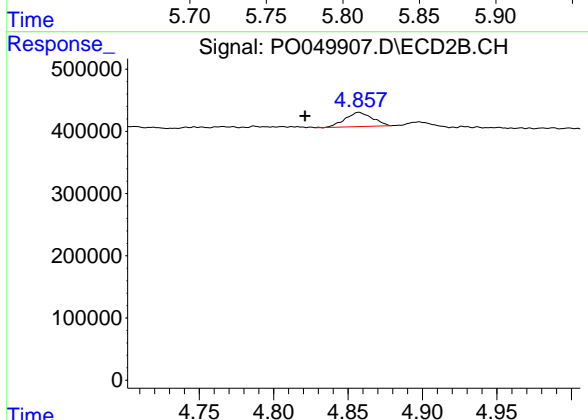
#20 AR-1242-5

R.T.: 5.404 min
 Delta R.T.: 0.026 min
 Response: 1766133
 Conc: 220.05 ng/ml



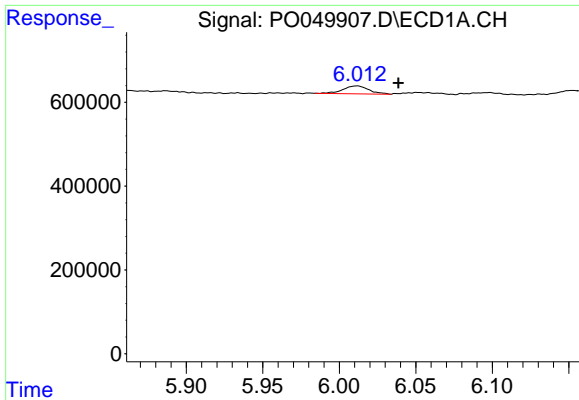
#22 AR-1248-2

R.T.: 5.805 min
 Delta R.T.: -0.029 min
 Response: 337105
 Conc: 40.50 ng/ml



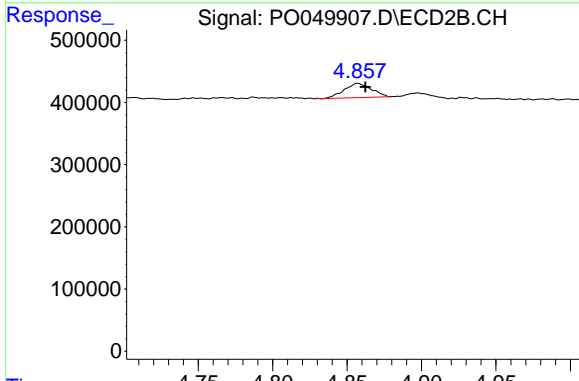
#22 AR-1248-2

R.T.: 4.857 min
 Delta R.T.: 0.036 min
 Response: 290799
 Conc: 34.18 ng/ml

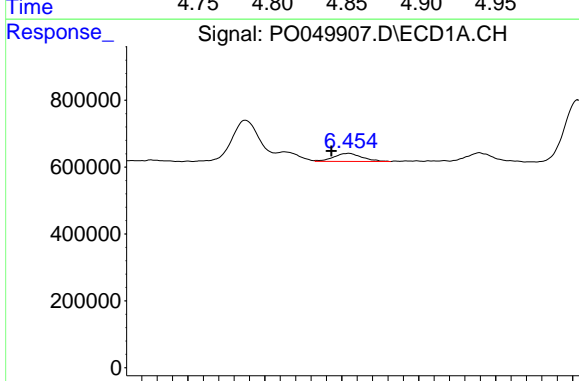


#23 AR-1248-3
 R.T.: 6.012 min
 Delta R.T.: -0.027 min
 Response: 219338
 Conc: 22.69 ng/ml

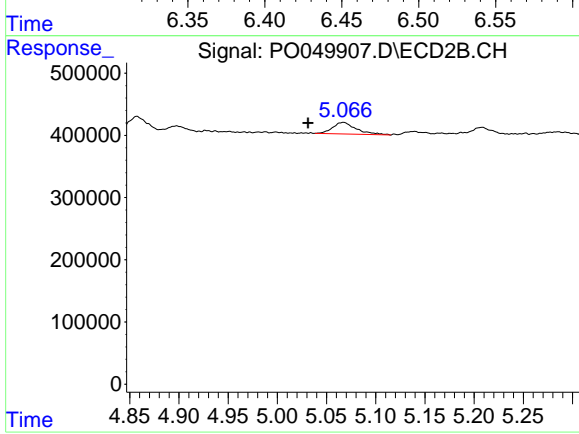
Instrument :
 ECD_O
 ClientSampleId :



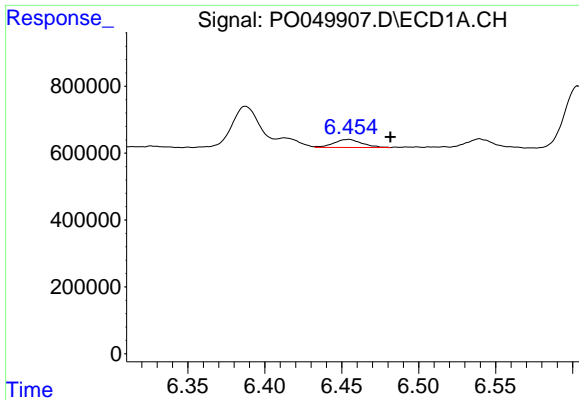
#23 AR-1248-3
 R.T.: 4.857 min
 Delta R.T.: -0.005 min
 Response: 290799
 Conc: 33.13 ng/ml



#24 AR-1248-4
 R.T.: 6.454 min
 Delta R.T.: 0.011 min
 Response: 304187
 Conc: 24.59 ng/ml



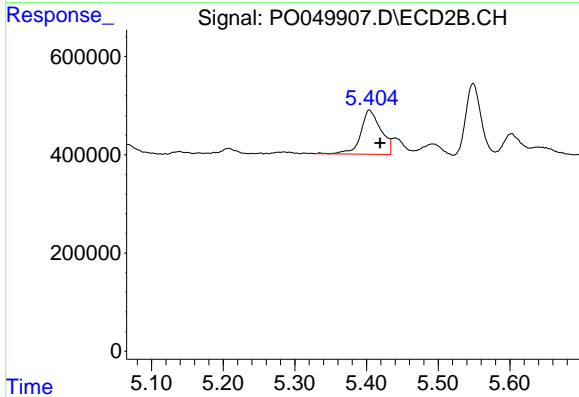
#24 AR-1248-4
 R.T.: 5.067 min
 Delta R.T.: 0.036 min
 Response: 311555
 Conc: 28.67 ng/ml



#25 AR-1248-5

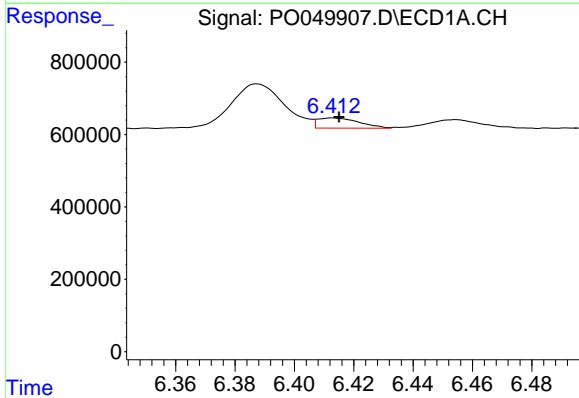
R.T.: 6.454 min
 Delta R.T.: -0.027 min
 Response: 304187
 Conc: 25.92 ng/ml

Instrument :
 ECD_O
 ClientSampled :



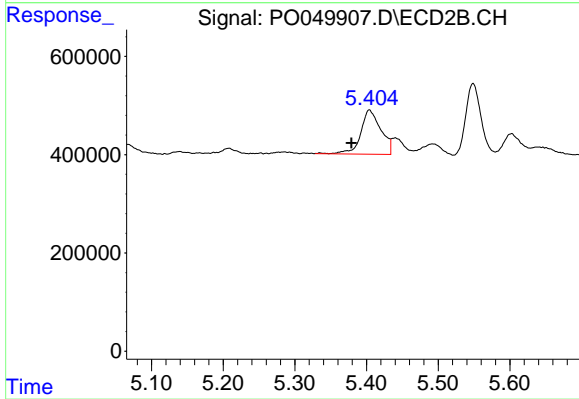
#25 AR-1248-5

R.T.: 5.404 min
 Delta R.T.: -0.015 min
 Response: 1766133
 Conc: 155.57 ng/ml



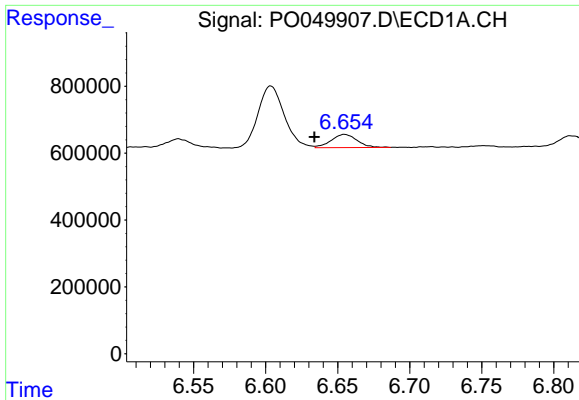
#26 AR-1254-1

R.T.: 6.413 min
 Delta R.T.: -0.002 min
 Response: 273886
 Conc: 19.92 ng/ml



#26 AR-1254-1

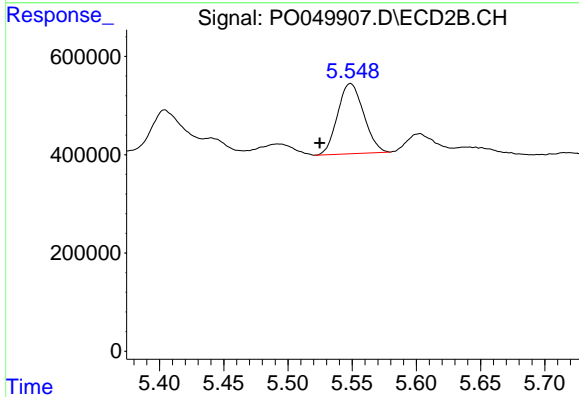
R.T.: 5.404 min
 Delta R.T.: 0.025 min
 Response: 1766133
 Conc: 90.09 ng/ml



#27 AR-1254-2

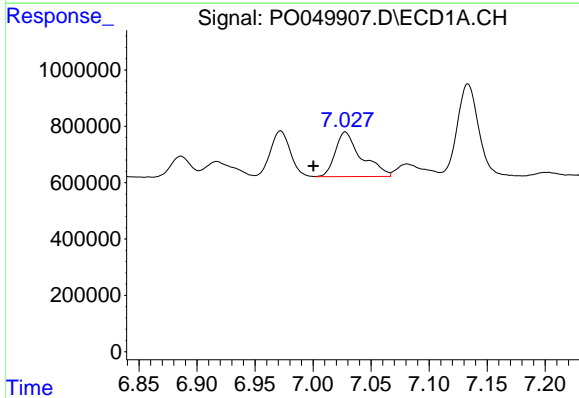
R.T.: 6.655 min
 Delta R.T.: 0.021 min
 Response: 498956
 Conc: 22.60 ng/ml

Instrument :
 ECD_O
 ClientSampled :



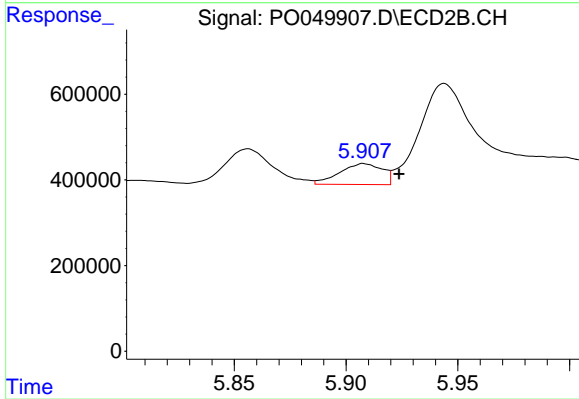
#27 AR-1254-2

R.T.: 5.549 min
 Delta R.T.: 0.024 min
 Response: 2016867
 Conc: 120.50 ng/ml



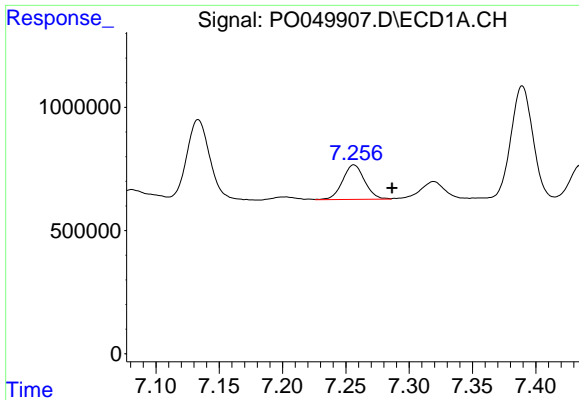
#28 AR-1254-3

R.T.: 7.028 min
 Delta R.T.: 0.028 min
 Response: 2468991
 Conc: 101.19 ng/ml



#28 AR-1254-3

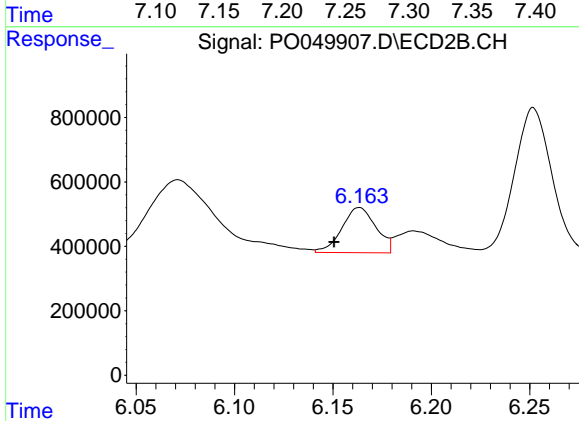
R.T.: 5.908 min
 Delta R.T.: -0.016 min
 Response: 650231
 Conc: 23.29 ng/ml



#29 AR-1254-4

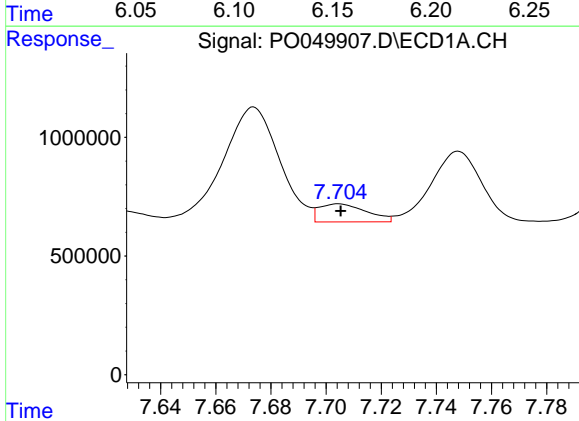
R.T.: 7.256 min
 Delta R.T.: -0.030 min
 Response: 1693976
 Conc: 82.60 ng/ml

Instrument :
 ECD_O
 ClientSampleId :



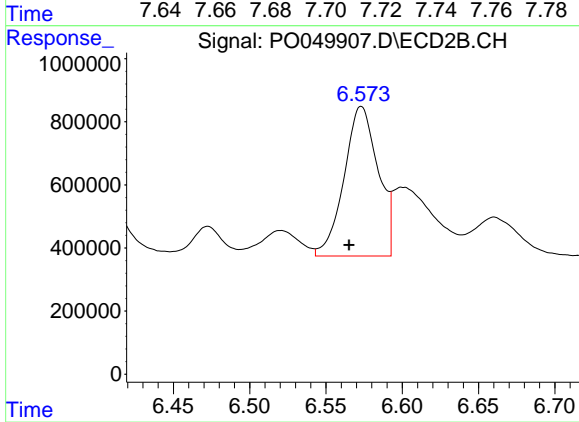
#29 AR-1254-4

R.T.: 6.163 min
 Delta R.T.: 0.013 min
 Response: 1686584
 Conc: 84.05 ng/ml



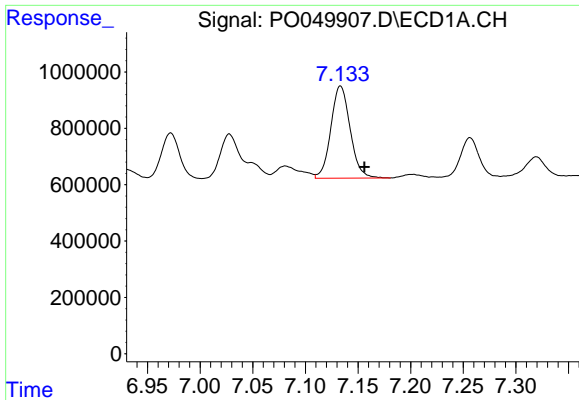
#30 AR-1254-5

R.T.: 7.705 min
 Delta R.T.: 0.000 min
 Response: 906140
 Conc: 47.02 ng/ml



#30 AR-1254-5

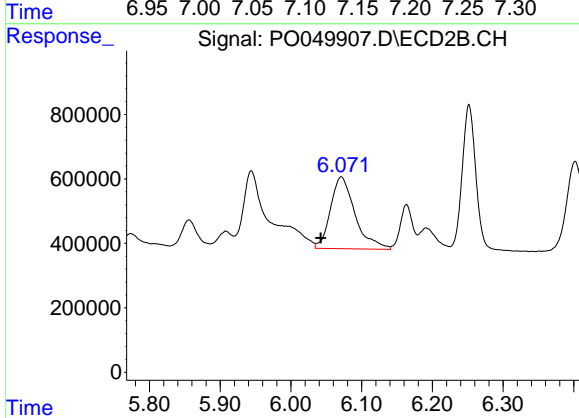
R.T.: 6.573 min
 Delta R.T.: 0.008 min
 Response: 7361820
 Conc: 275.13 ng/ml



#31 AR-1260-1

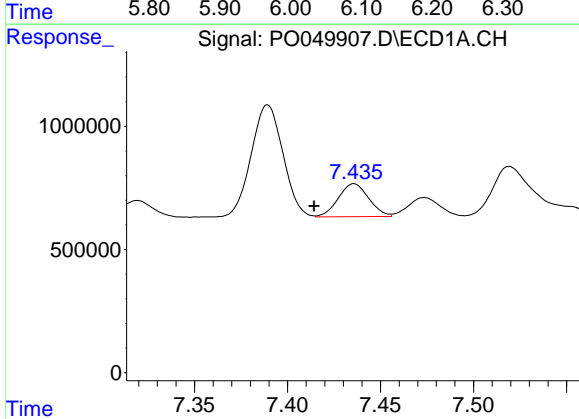
R.T.: 7.133 min
 Delta R.T.: -0.023 min
 Response: 4174611
 Conc: 226.26 ng/ml

Instrument :
 ECD_O
 ClientSampled :



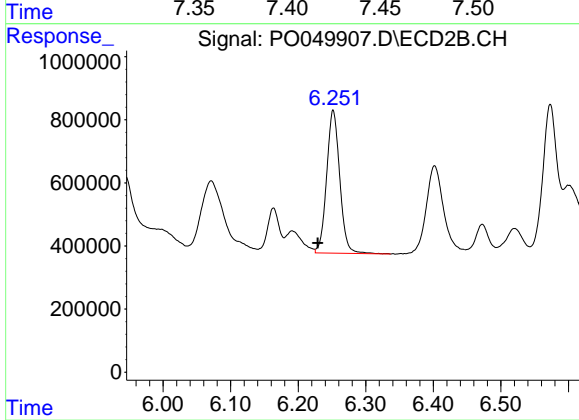
#31 AR-1260-1

R.T.: 6.071 min
 Delta R.T.: 0.029 min
 Response: 5386943
 Conc: 260.89 ng/ml



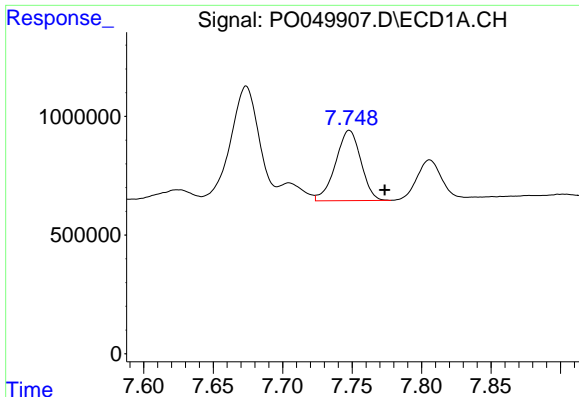
#32 AR-1260-2

R.T.: 7.436 min
 Delta R.T.: 0.021 min
 Response: 1519796
 Conc: 63.38 ng/ml



#32 AR-1260-2

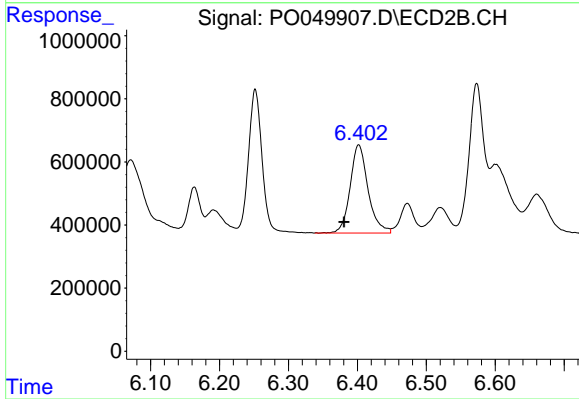
R.T.: 6.252 min
 Delta R.T.: 0.023 min
 Response: 6117993
 Conc: 218.20 ng/ml



#33 AR-1260-3

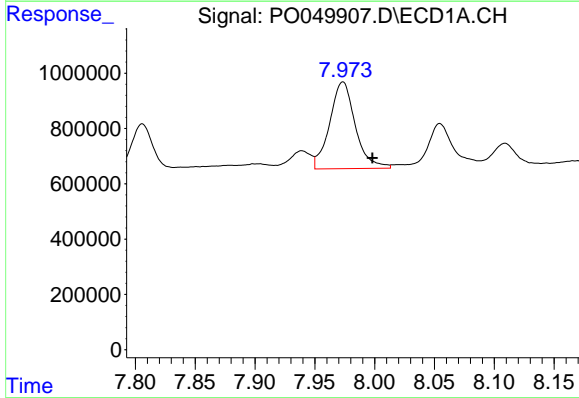
R.T.: 7.748 min
 Delta R.T.: -0.026 min
 Response: 3761193
 Conc: 198.94 ng/ml

Instrument :
 ECD_O
 ClientSampleId :



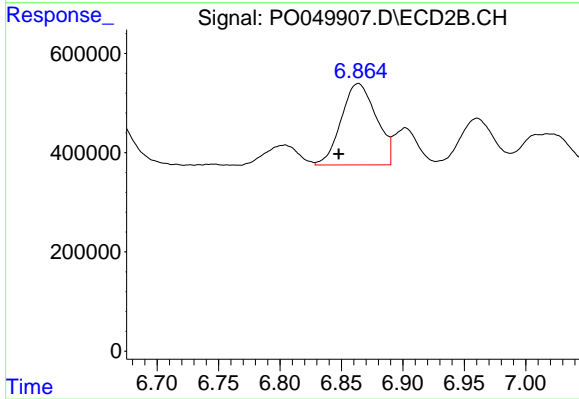
#33 AR-1260-3

R.T.: 6.402 min
 Delta R.T.: 0.022 min
 Response: 5068009
 Conc: 207.97 ng/ml



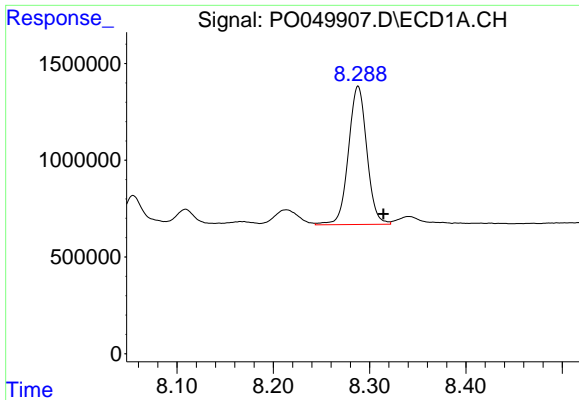
#34 AR-1260-4

R.T.: 7.973 min
 Delta R.T.: -0.025 min
 Response: 4678179
 Conc: 246.38 ng/ml



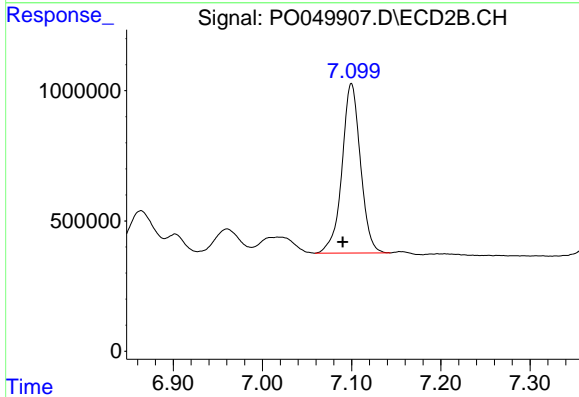
#34 AR-1260-4

R.T.: 6.864 min
 Delta R.T.: 0.016 min
 Response: 3260796
 Conc: 168.84 ng/ml

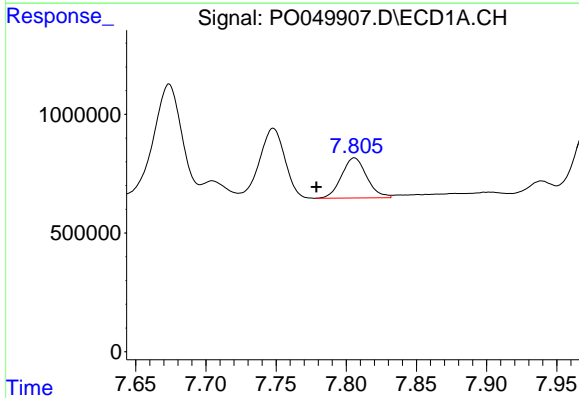


#35 AR-1260-5
R.T.: 8.288 min
Delta R.T.: -0.026 min
Response: 9455172
Conc: 223.51 ng/ml

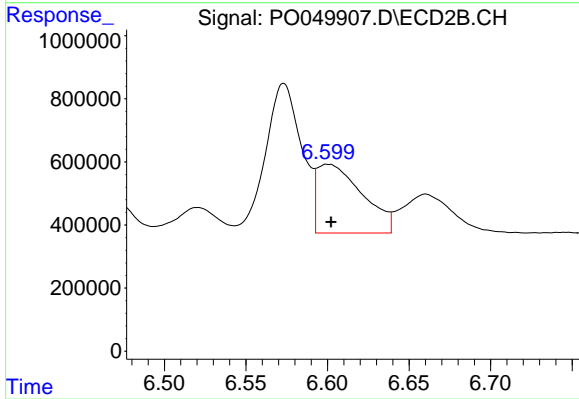
Instrument :
ECD_O
ClientSampleId :



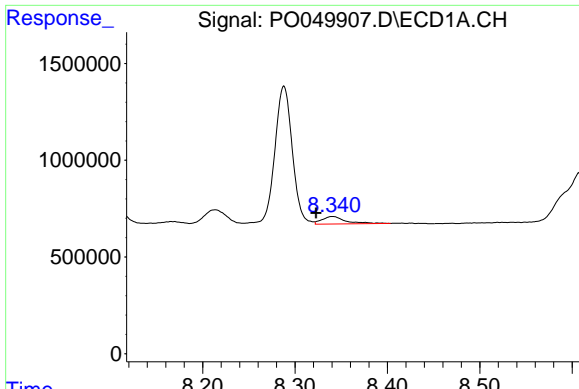
#35 AR-1260-5
R.T.: 7.100 min
Delta R.T.: 0.010 min
Response: 9363253
Conc: 182.63 ng/ml



#36 AR-1262-1
R.T.: 7.806 min
Delta R.T.: 0.027 min
Response: 2119915
Conc: 100.42 ng/ml

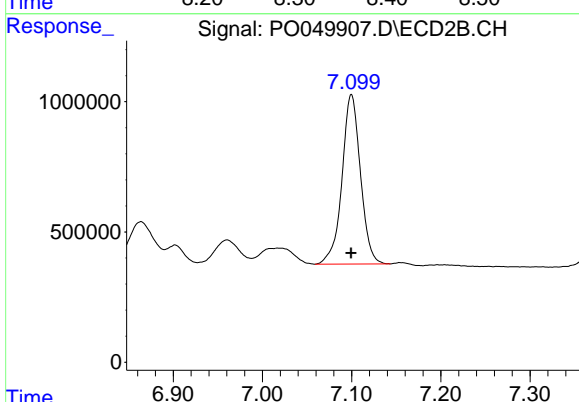


#36 AR-1262-1
R.T.: 6.600 min
Delta R.T.: -0.002 min
Response: 4204159
Conc: 171.39 ng/ml

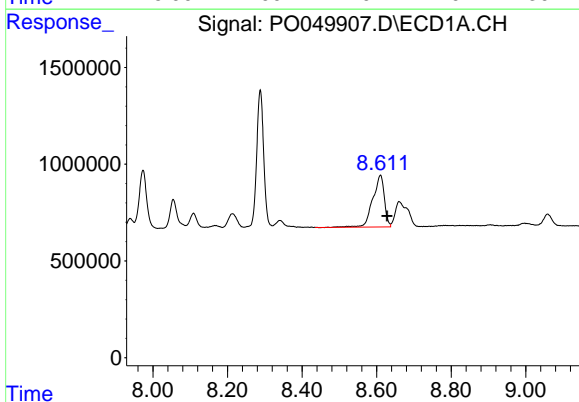


#37 AR-1262-2
 R.T.: 8.341 min
 Delta R.T.: 0.018 min
 Response: 689006
 Conc: 18.49 ng/ml

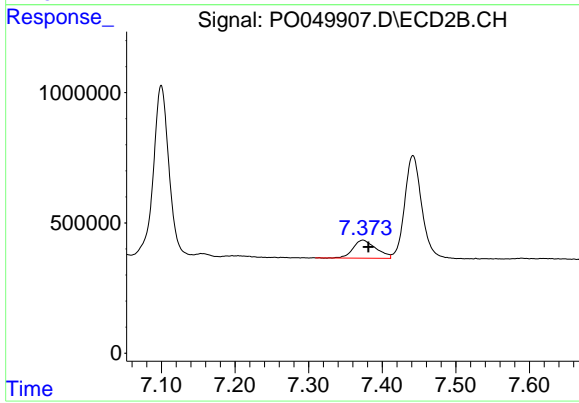
Instrument :
 ECD_O
 ClientSampled :



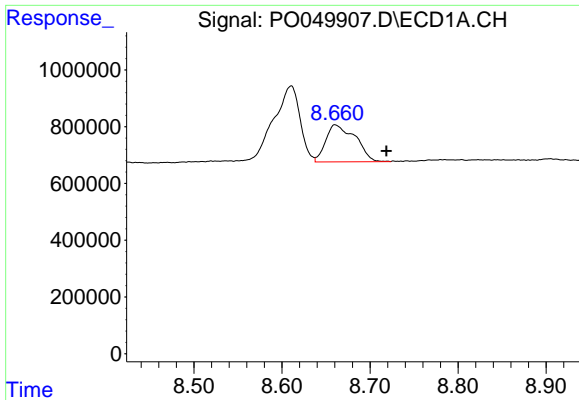
#37 AR-1262-2
 R.T.: 7.100 min
 Delta R.T.: 0.000 min
 Response: 9363253
 Conc: 221.25 ng/ml



#38 AR-1262-3
 R.T.: 8.610 min
 Delta R.T.: -0.018 min
 Response: 5780078
 Conc: 239.62 ng/ml



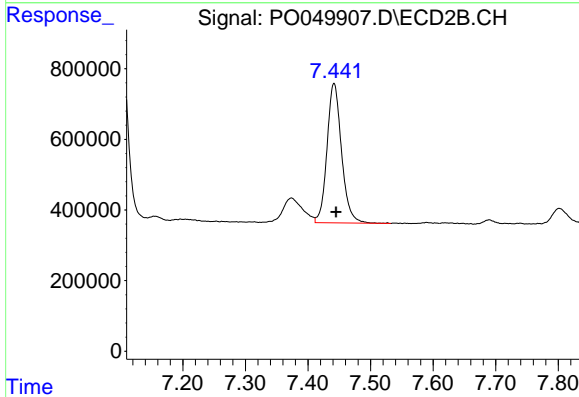
#38 AR-1262-3
 R.T.: 7.374 min
 Delta R.T.: -0.007 min
 Response: 1501311
 Conc: 89.20 ng/ml



#39 AR-1262-4

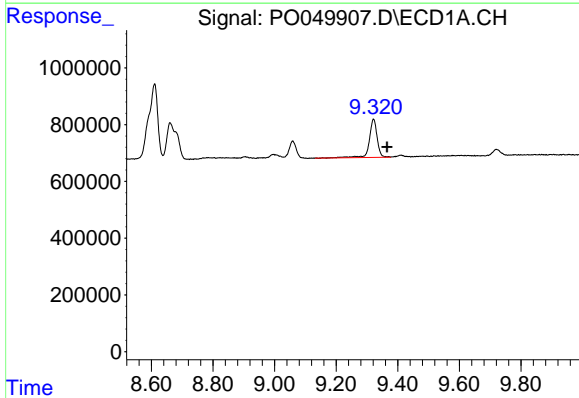
R.T.: 8.660 min
Delta R.T.: -0.058 min
Response: 3045834
Conc: 160.60 ng/ml

Instrument :
ECD_O
ClientSampled :



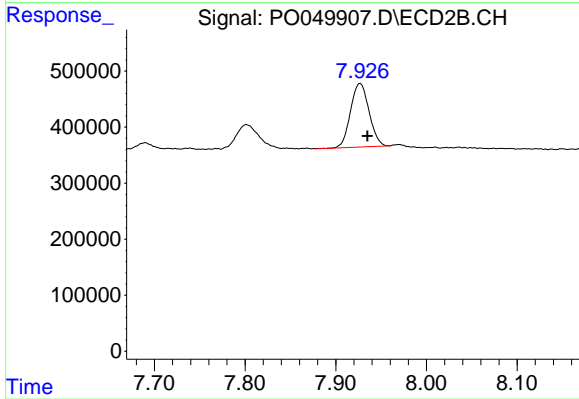
#39 AR-1262-4

R.T.: 7.442 min
Delta R.T.: -0.003 min
Response: 6373775
Conc: 216.30 ng/ml



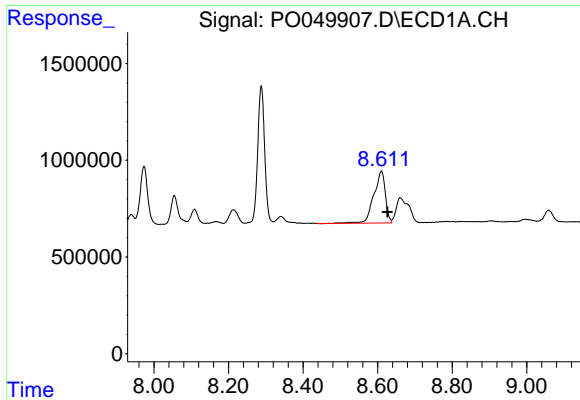
#40 AR-1262-5

R.T.: 9.321 min
Delta R.T.: -0.044 min
Response: 2356933
Conc: 172.52 ng/ml



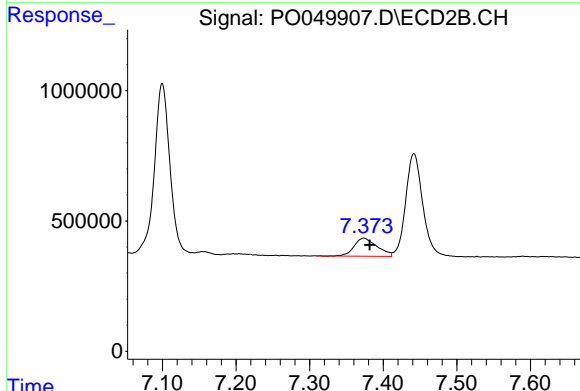
#40 AR-1262-5

R.T.: 7.927 min
Delta R.T.: -0.008 min
Response: 1611983
Conc: 120.94 ng/ml

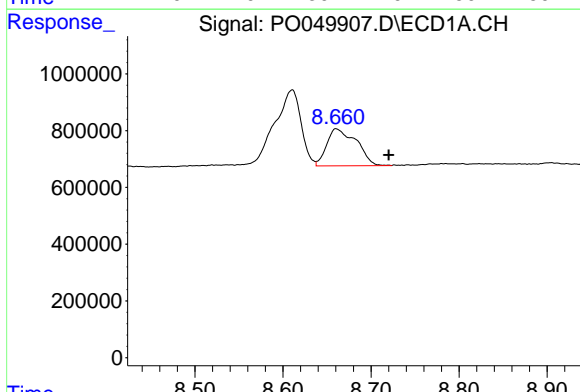


#41 AR-1268-1
 R.T.: 8.610 min
 Delta R.T.: -0.016 min
 Response: 5780078
 Conc: 115.61 ng/ml

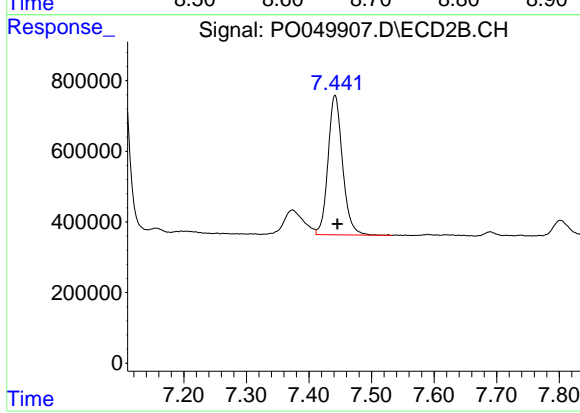
Instrument :
 ECD_O
 ClientSampled :



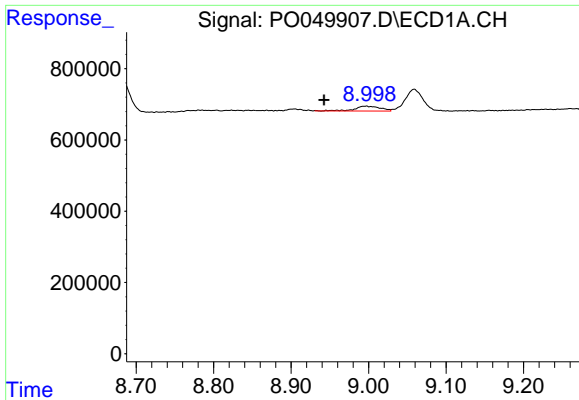
#41 AR-1268-1
 R.T.: 7.374 min
 Delta R.T.: -0.008 min
 Response: 1501311
 Conc: 28.07 ng/ml



#42 AR-1268-2
 R.T.: 8.660 min
 Delta R.T.: -0.059 min
 Response: 3045834
 Conc: 67.15 ng/ml



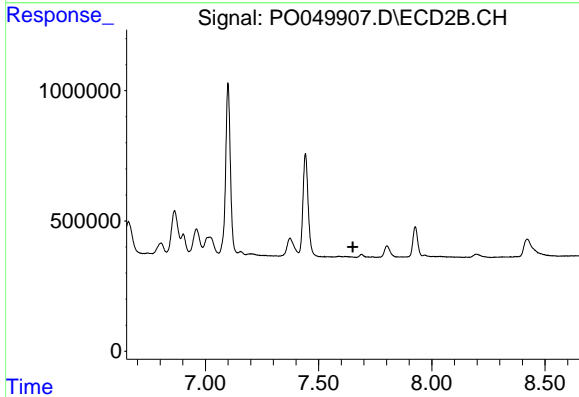
#42 AR-1268-2
 R.T.: 7.442 min
 Delta R.T.: -0.004 min
 Response: 6373775
 Conc: 131.41 ng/ml



#43 AR-1268-3

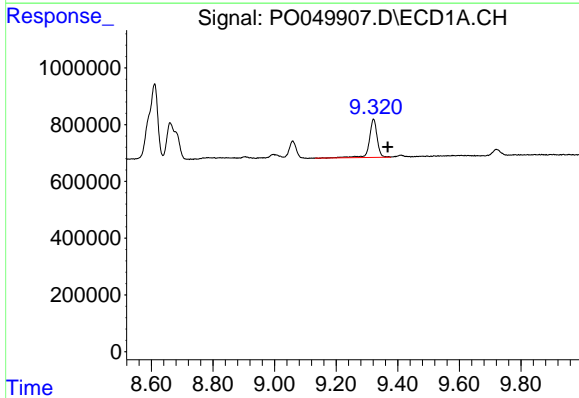
R.T.: 8.997 min
 Delta R.T.: 0.054 min
 Response: 311749
 Conc: 7.81 ng/ml

Instrument :
 ECD_O
 ClientSampled :



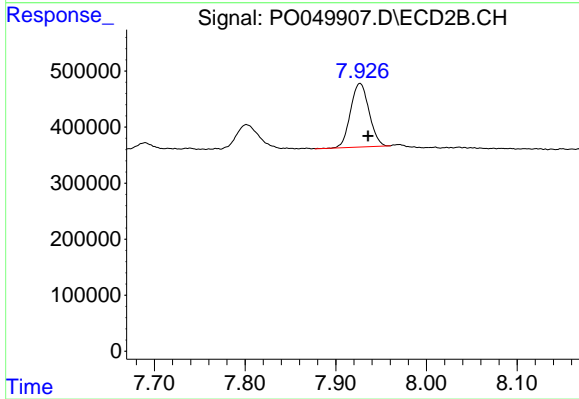
#43 AR-1268-3

R.T.: 0.000 min
 Exp R.T. : 7.651 min
 Response: 0
 Conc: N.D.



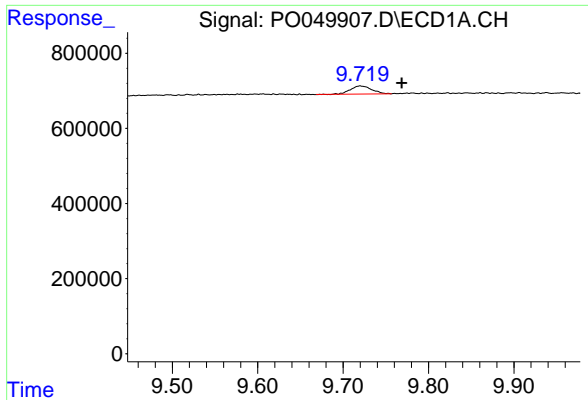
#44 AR-1268-4

R.T.: 9.321 min
 Delta R.T.: -0.046 min
 Response: 2356933
 Conc: 138.28 ng/ml



#44 AR-1268-4

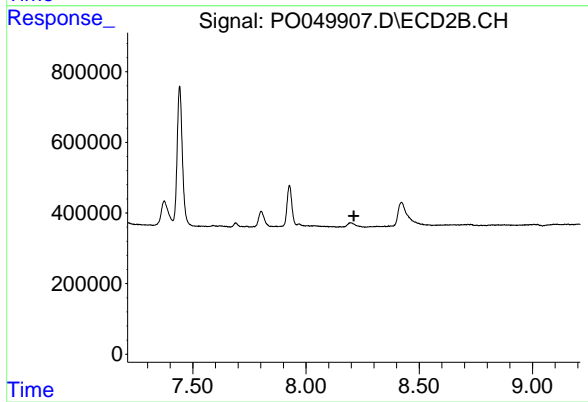
R.T.: 7.927 min
 Delta R.T.: -0.009 min
 Response: 1611983
 Conc: 96.80 ng/ml



#45 AR-1268-5

R.T.: 9.720 min
Delta R.T.: -0.049 min
Response: 380110
Conc: 3.13 ng/ml

Instrument :
ECD_O
ClientSampleId :



#45 AR-1268-5

R.T.: 0.000 min
Exp R.T. : 8.211 min
Response: 0
Conc: N.D.