

Data Path : Z:\pestpcbsrv\HPCHEM1\ECD\_0\Data\PO101118\  
 Data File : PO049911.D  
 Signal(s) : Signal #1: ECD1A.CH Signal #2: ECD2B.CH  
 Acq On : 11 Oct 2018 14:15  
 Operator : SM/SJ  
 Sample : J5326-05  
 Misc :  
 ALS Vial : 4 Sample Multiplier: 1

Instrument :  
 ECD\_0  
 ClientSampleId :

Integration File signal 1: autoint1.e  
 Integration File signal 2: autoint2.e  
 Quant Time: Oct 11 14:43:22 2018  
 Quant Method : Z:\pestpcbsrv\HPCHEM1\ECD\_0\methods\PO100818.M  
 Quant Title : GC EXTRACTABLES  
 QLast Update : Mon Oct 08 15:27:38 2018  
 Response via : Initial Calibration  
 Integrator: ChemStation 6890 Scale Mode: Small noise peaks clipped

Volume Inj. : 2 µl  
 Signal #1 Phase : ZB-MR1 Signal #2 Phase: ZB-MR2  
 Signal #1 Info : 30Mx0.32mmx 0.50µ Signal #2 Info : 30M x 0.32mm x 0.25µm

Compound	RT#1	RT#2	Resp#1	Resp#2	ng/ml	ng/ml
-----						
System Monitoring Compounds						
1) SA Tetrachlo...	4.368	3.546	6269921	6013793	27.736	24.934
2) SA Decachlor...	10.054	8.423	5655297	3779332	16.973	14.449
Target Compounds						
28) L6 AR-1254-3	6.993	0.000	95088	0	3.897	N.D. #
-----						

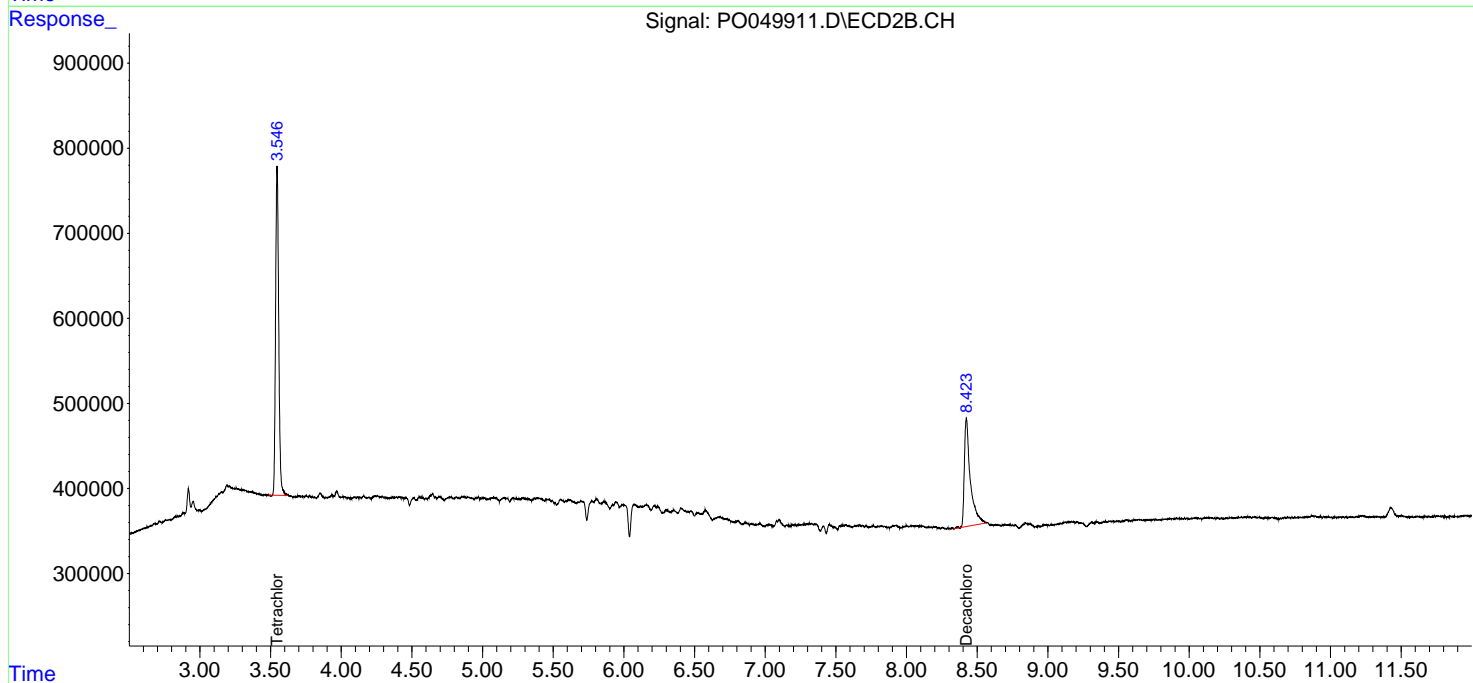
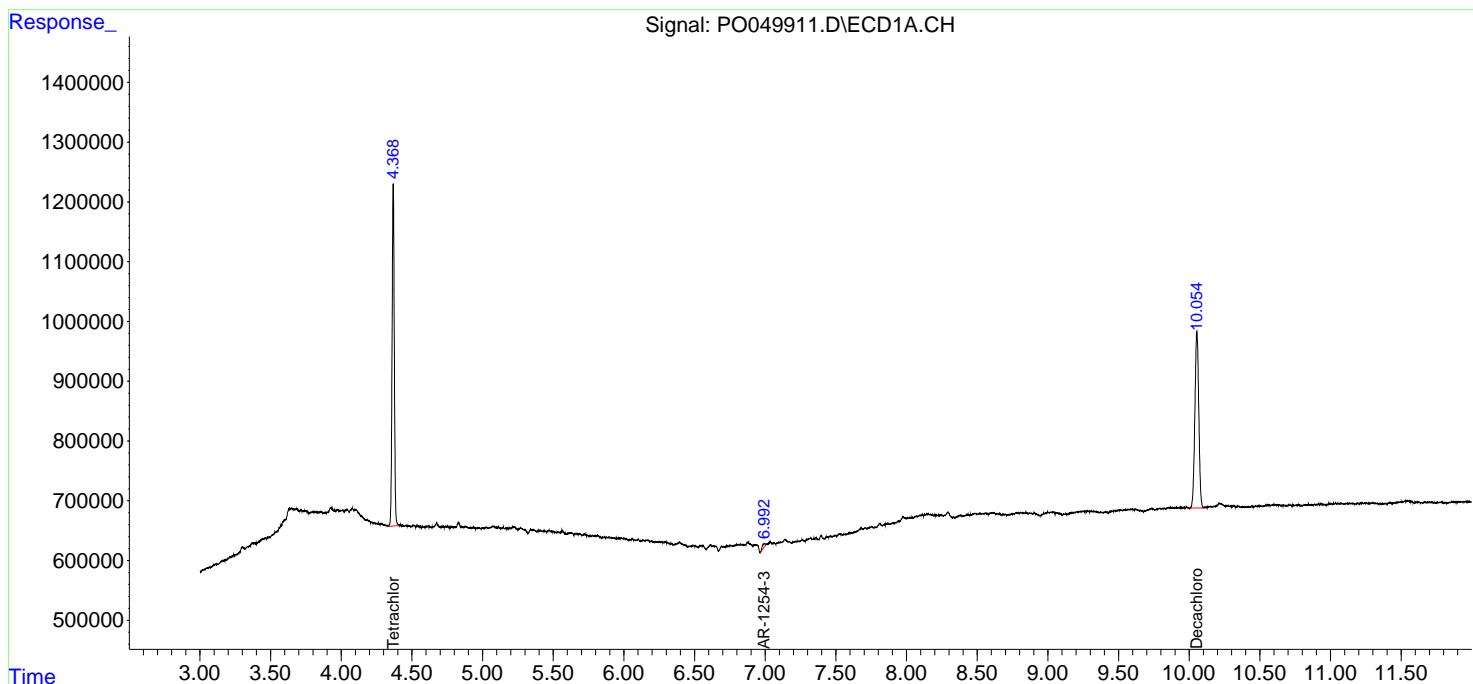
(f)=RT Delta > 1/2 Window (#)=Amounts differ by > 25% (m)=manual int.

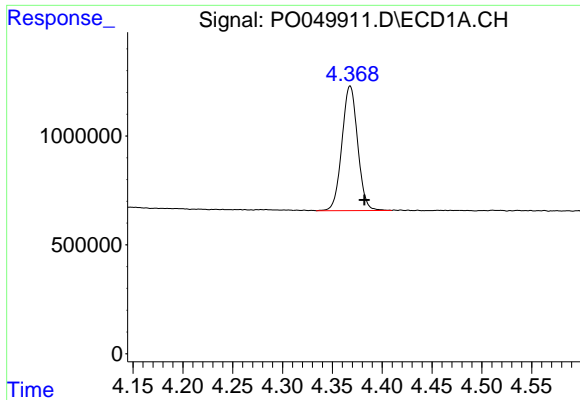
Data Path : Z:\pestpcbsrv\HPCHEM1\ECD\_0\Data\PO101118\  
 Data File : P0049911.D  
 Signal(s) : Signal #1: ECD1A.CH Signal #2: ECD2B.CH  
 Acq On : 11 Oct 2018 14:15  
 Operator : SM/SJ  
 Sample : J5326-05  
 Misc :  
 ALS Vial : 4 Sample Multiplier: 1

Instrument :  
 ECD\_O  
 ClientSampleId :

Integration File signal 1: autoint1.e  
 Integration File signal 2: autoint2.e  
 Quant Time: Oct 11 14:43:22 2018  
 Quant Method : Z:\pestpcbsrv\HPCHEM1\ECD\_0\methods\PO100818.M  
 Quant Title : GC EXTRACTABLES  
 QLast Update : Mon Oct 08 15:27:38 2018  
 Response via : Initial Calibration  
 Integrator: ChemStation 6890 Scale Mode: Small noise peaks clipped

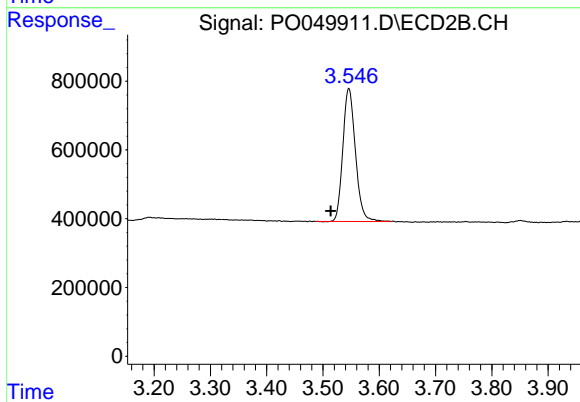
Volume Inj. : 2 µl  
 Signal #1 Phase : ZB-MR1 Signal #2 Phase: ZB-MR2  
 Signal #1 Info : 30Mx0.32mmx 0.50µ Signal #2 Info : 30M x 0.32mm x 0.25µm



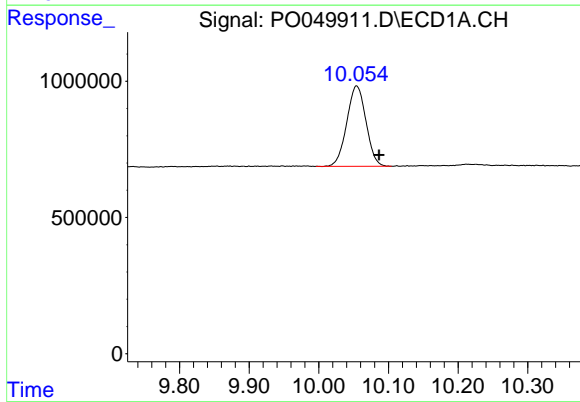


#1 Tetrachloro-m-xylene  
 R.T.: 4.368 min  
 Delta R.T.: -0.014 min  
 Response: 6269921  
 Conc: 27.74 ng/ml

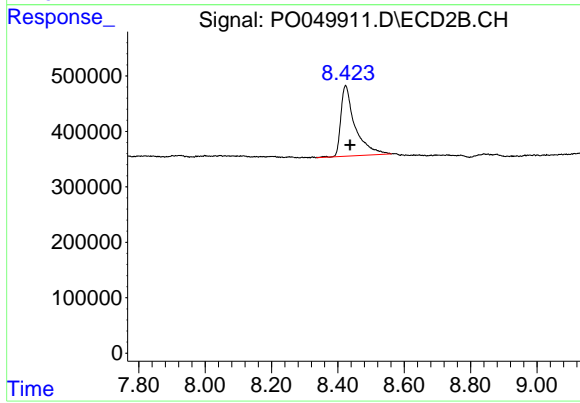
Instrument :  
 ECD\_O  
 ClientSampleId :



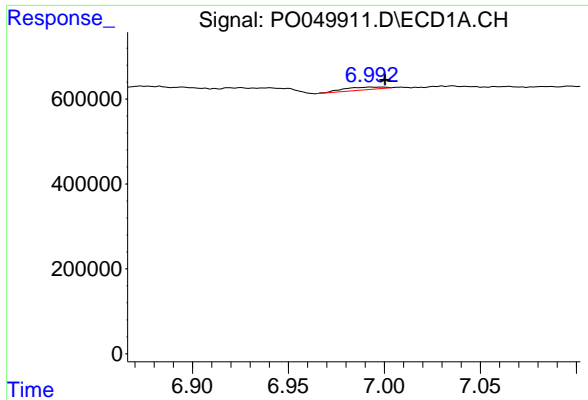
#1 Tetrachloro-m-xylene  
 R.T.: 3.546 min  
 Delta R.T.: 0.032 min  
 Response: 6013793  
 Conc: 24.93 ng/ml



#2 Decachlorobiphenyl  
 R.T.: 10.054 min  
 Delta R.T.: -0.033 min  
 Response: 5655297  
 Conc: 16.97 ng/ml



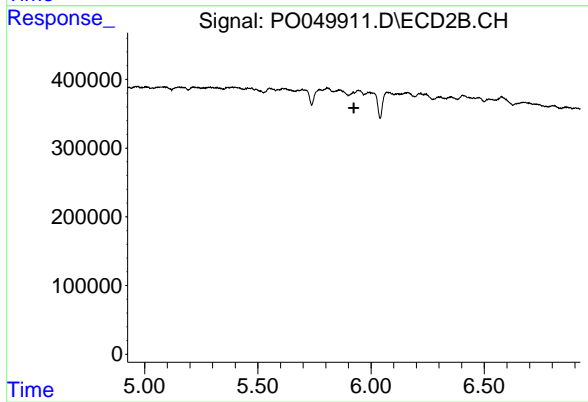
#2 Decachlorobiphenyl  
 R.T.: 8.423 min  
 Delta R.T.: -0.013 min  
 Response: 3779332  
 Conc: 14.45 ng/ml



#28 AR-1254-3

R.T.: 6.993 min  
Delta R.T.: -0.008 min  
Response: 95088  
Conc: 3.90 ng/ml

Instrument :  
ECD\_O  
ClientSampleId :



#28 AR-1254-3

R.T.: 0.000 min  
Exp R.T. : 5.924 min  
Response: 0  
Conc: N.D.