

Data Path : Z:\pestpcbsrv\HPCHEM1\ECD_0\Data\PO101118\
 Data File : PO049915.D
 Signal(s) : Signal #1: ECD1A.CH Signal #2: ECD2B.CH
 Acq On : 11 Oct 2018 15:31
 Operator : SM/SJ
 Sample : PB113727BL
 Misc :
 ALS Vial : 8 Sample Multiplier: 1

Instrument :
 ECD_0
 ClientSampleId :

Integration File signal 1: autoint1.e
 Integration File signal 2: autoint2.e
 Quant Time: Oct 11 17:00:10 2018
 Quant Method : Z:\pestpcbsrv\HPCHEM1\ECD_0\methods\PO100818.M
 Quant Title : GC EXTRACTABLES
 QLast Update : Mon Oct 08 15:27:38 2018
 Response via : Initial Calibration
 Integrator: ChemStation 6890 Scale Mode: Small noise peaks clipped

Volume Inj. : 2 µl
 Signal #1 Phase : ZB-MR2 Signal #2 Phase: ZB-MR2
 Signal #1 Info : 30Mx0.32mmx 0.50µ Signal #2 Info : 30M x 0.32mm x 0.25µm

Compound	RT#1	RT#2	Resp#1	Resp#2	ng/ml	ng/ml

System Monitoring Compounds						
1) SA Tetrachlo...	4.363	3.547	5404825	5103893	23.909	21.161
2) SA Decachlor...	10.047	8.423	5722227	3951760	17.174	15.108
Target Compounds						
15) L3 AR-1232-5	5.899	0.000	343765	0	177.180	N.D. #
20) L4 AR-1242-5	0.000	5.443	0	613670	N.D.	76.459 #
22) L5 AR-1248-2	5.899	0.000	343765	0	41.304	N.D. #
24) L5 AR-1248-4	6.390	0.000	7261304	0	586.887	N.D. #
25) L5 AR-1248-5	0.000	5.443	0	613670	N.D.	54.056 #
26) L6 AR-1254-1	6.390	5.443	7261304	613670	528.042	31.304 #
28) L6 AR-1254-3	6.991	5.945	506877	2523077	20.774	90.388 #
32) L7 AR-1260-2	7.392	6.252	12462689	782697	519.701	27.915 #
33) L7 AR-1260-3	7.826	0.000	6623803	0	350.346	N.D. #
34) L7 AR-1260-4	0.000	6.856	0	91070	N.D.	4.715 #
35) L7 AR-1260-5	8.287	0.000	890936	0	21.060	N.D. #
36) L8 AR-1262-1	7.826	0.000	6623803	0	313.774	N.D. #
37) L8 AR-1262-2	8.287	0.000	890936	0	23.914	N.D. #
43) L9 AR-1268-3	0.000	7.581	0	1342161	N.D.	33.314 #

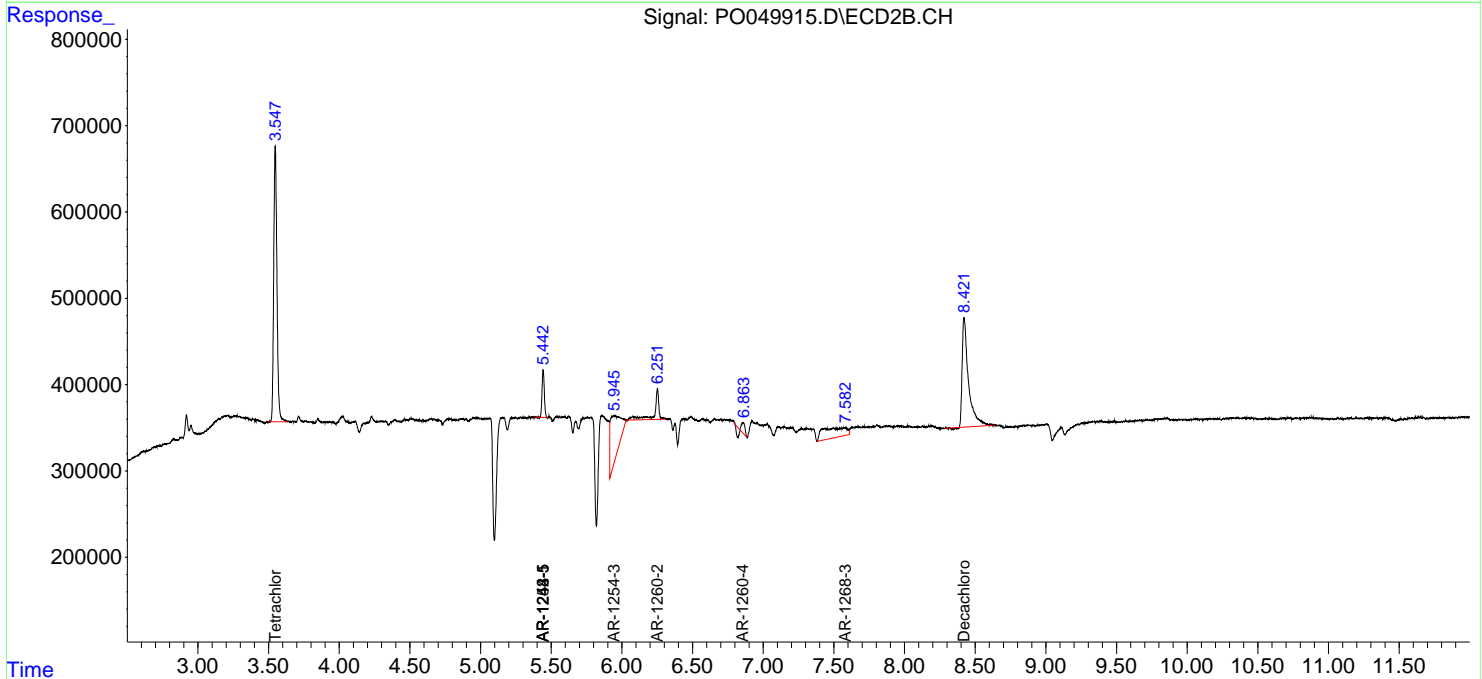
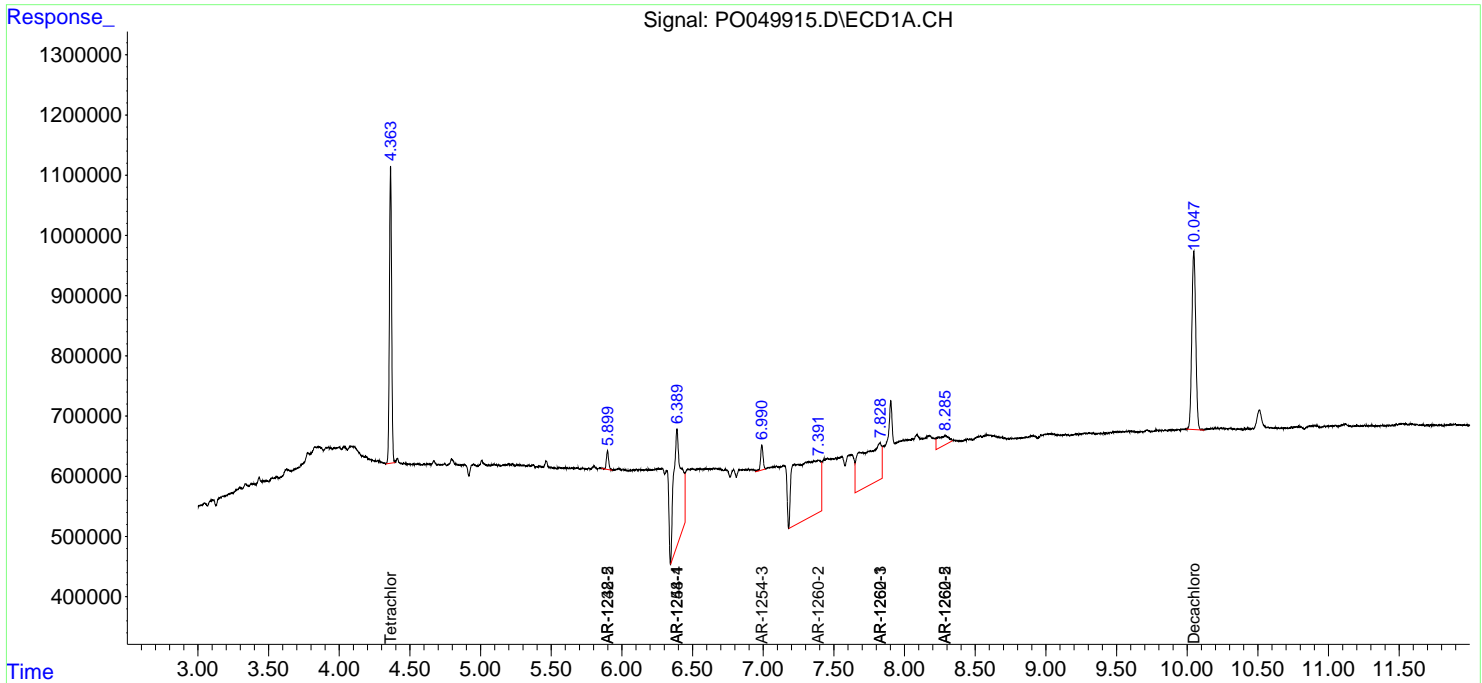
(f)=RT Delta > 1/2 Window (#)=Amounts differ by > 25% (m)=manual int.

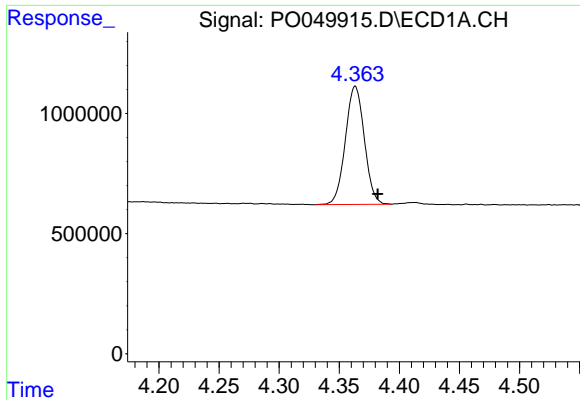
Data Path : Z:\pestpcbsrv\HPCHEM1\ECD_O\Data\PO101118\
 Data File : PO049915.D
 Signal(s) : Signal #1: ECD1A.CH Signal #2: ECD2B.CH
 Acq On : 11 Oct 2018 15:31
 Operator : SM/SJ
 Sample : PB113727BL
 Misc :
 ALS Vial : 8 Sample Multiplier: 1

Instrument :
 ECD_O
 ClientSampled :

Integration File signal 1: autoint1.e
 Integration File signal 2: autoint2.e
 Quant Time: Oct 11 17:00:10 2018
 Quant Method : Z:\pestpcbsrv\HPCHEM1\ECD_O\methods\PO100818.M
 Quant Title : GC EXTRACTABLES
 QLast Update : Mon Oct 08 15:27:38 2018
 Response via : Initial Calibration
 Integrator: ChemStation 6890 Scale Mode: Small noise peaks clipped

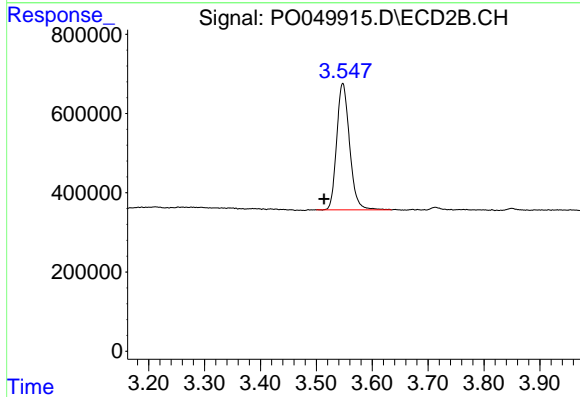
Volume Inj. : 2 µl
 Signal #1 Phase : ZB-MR1 Signal #2 Phase: ZB-MR2
 Signal #1 Info : 30Mx0.32mmx 0.50µ Signal #2 Info : 30M x 0.32mm x 0.25µm



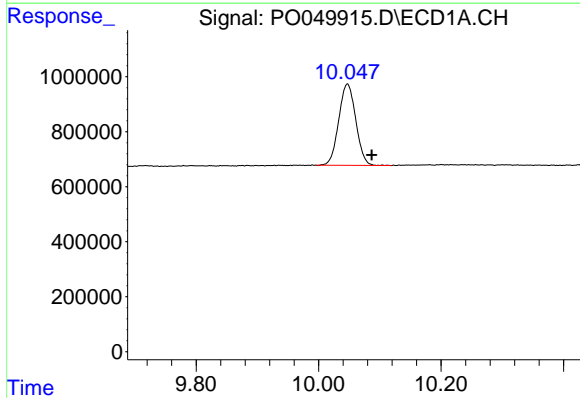


#1 Tetrachloro-m-xylene
 R.T.: 4.363 min
 Delta R.T.: -0.019 min
 Response: 5404825
 Conc: 23.91 ng/ml

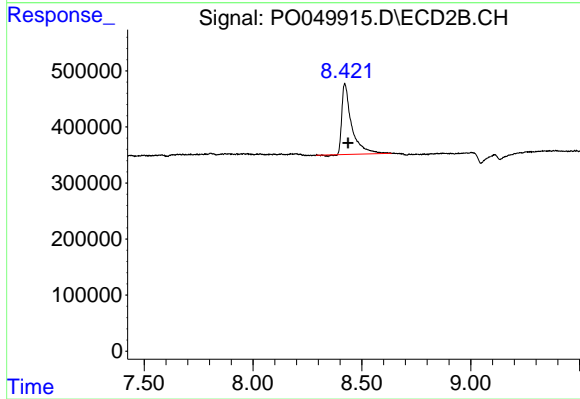
Instrument :
 ECD_O
 ClientSampleId :



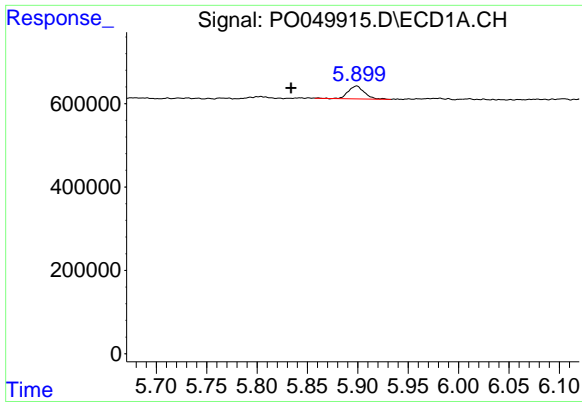
#1 Tetrachloro-m-xylene
 R.T.: 3.547 min
 Delta R.T.: 0.034 min
 Response: 5103893
 Conc: 21.16 ng/ml



#2 Decachlorobiphenyl
 R.T.: 10.047 min
 Delta R.T.: -0.040 min
 Response: 5722227
 Conc: 17.17 ng/ml



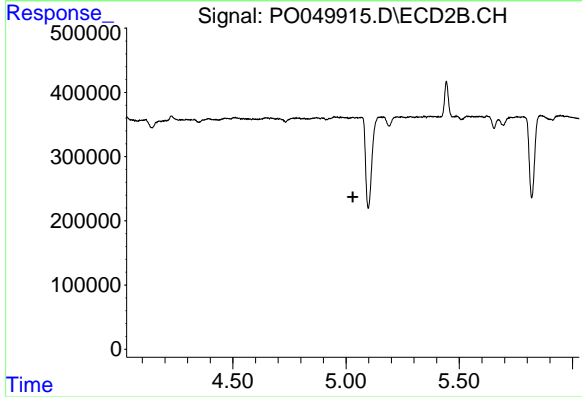
#2 Decachlorobiphenyl
 R.T.: 8.423 min
 Delta R.T.: -0.014 min
 Response: 3951760
 Conc: 15.11 ng/ml



#15 AR-1232-5

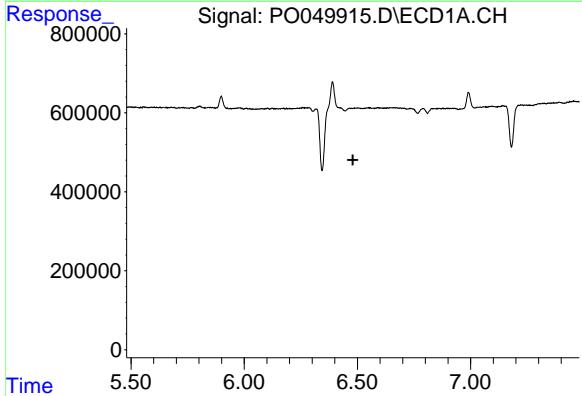
R.T.: 5.899 min
 Delta R.T.: 0.065 min
 Response: 343765
 Conc: 177.18 ng/ml

Instrument :
 ECD_O
 ClientSampleId :



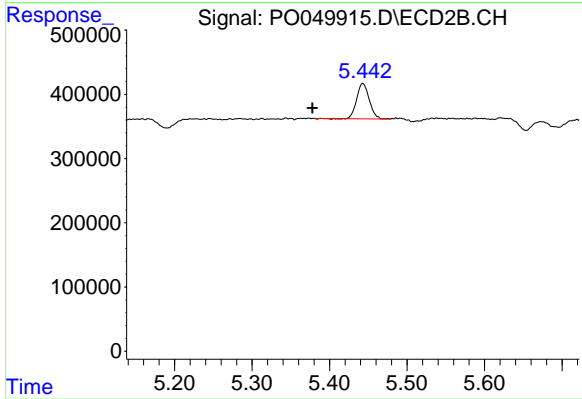
#15 AR-1232-5

R.T.: 0.000 min
 Exp R.T. : 5.030 min
 Response: 0
 Conc: N.D.



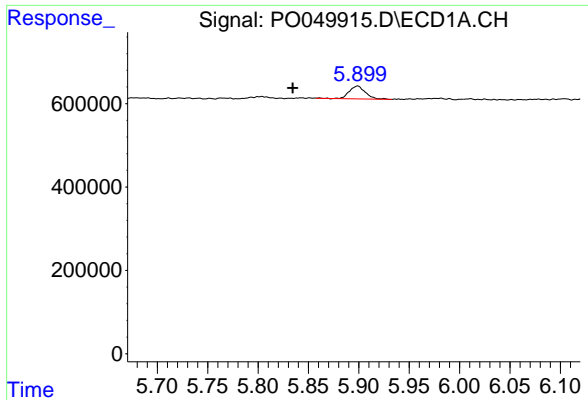
#20 AR-1242-5

R.T.: 0.000 min
 Exp R.T. : 6.480 min
 Response: 0
 Conc: N.D.



#20 AR-1242-5

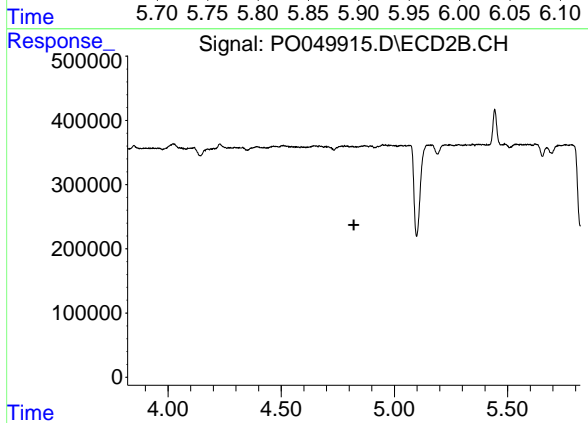
R.T.: 5.443 min
 Delta R.T.: 0.065 min
 Response: 613670
 Conc: 76.46 ng/ml



#22 AR-1248-2

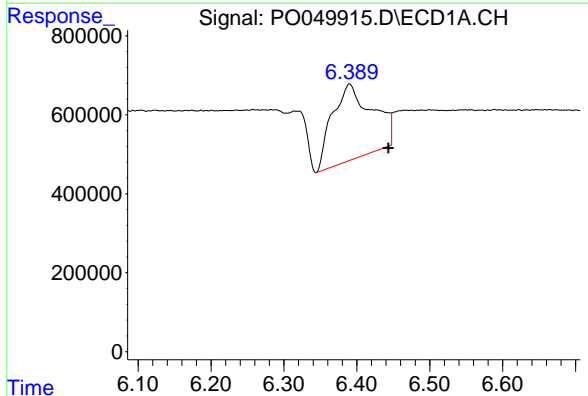
R.T.: 5.899 min
 Delta R.T.: 0.065 min
 Response: 343765
 Conc: 41.30 ng/ml

Instrument :
 ECD_O
 ClientSampleId :



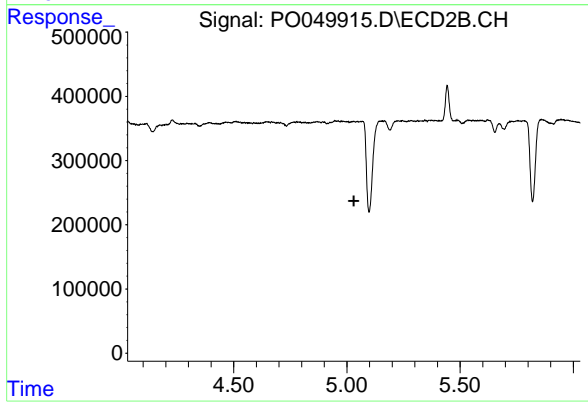
#22 AR-1248-2

R.T.: 0.000 min
 Exp R.T. : 4.821 min
 Response: 0
 Conc: N.D.



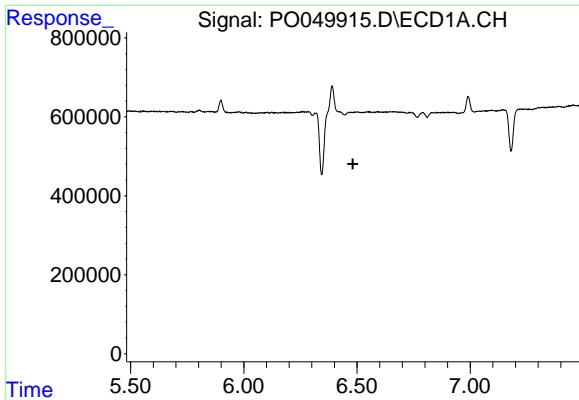
#24 AR-1248-4

R.T.: 6.390 min
 Delta R.T.: -0.053 min
 Response: 7261304
 Conc: 586.89 ng/ml



#24 AR-1248-4

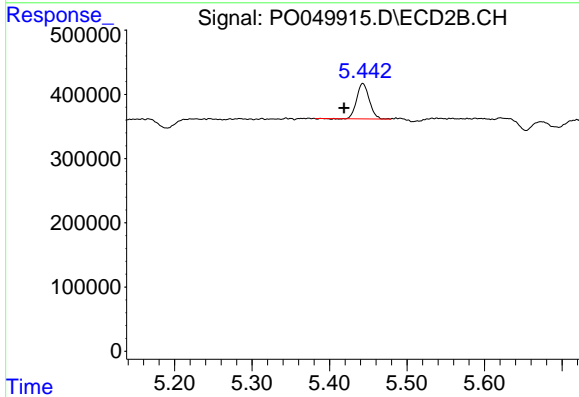
R.T.: 0.000 min
 Exp R.T. : 5.031 min
 Response: 0
 Conc: N.D.



#25 AR-1248-5

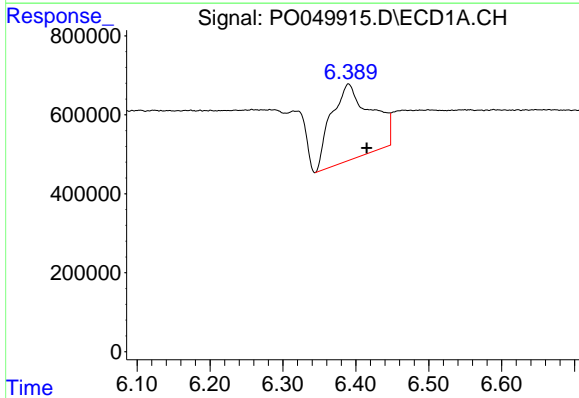
R.T.: 0.000 min
 Exp R.T.: 6.482 min
 Response: 0
 Conc: N.D.

Instrument :
 ECD_O
 ClientSampleId :



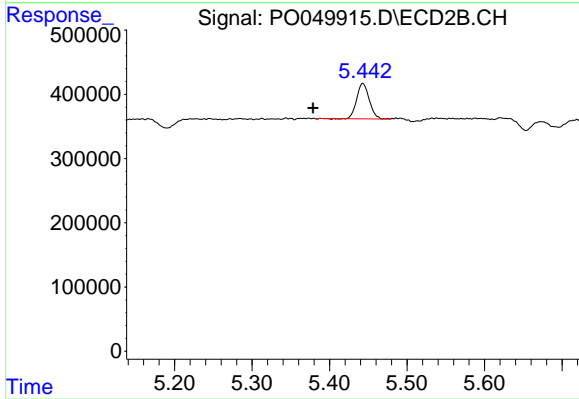
#25 AR-1248-5

R.T.: 5.443 min
 Delta R.T.: 0.024 min
 Response: 613670
 Conc: 54.06 ng/ml



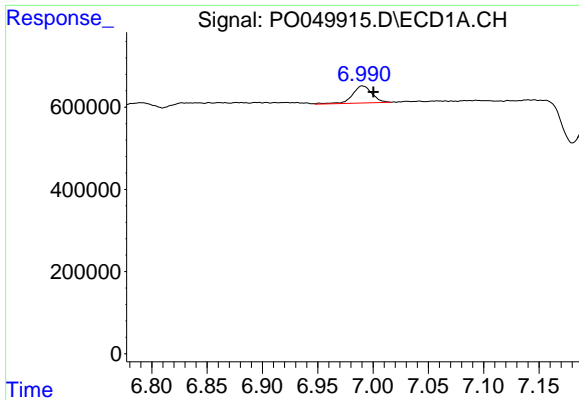
#26 AR-1254-1

R.T.: 6.390 min
 Delta R.T.: -0.025 min
 Response: 7261304
 Conc: 528.04 ng/ml



#26 AR-1254-1

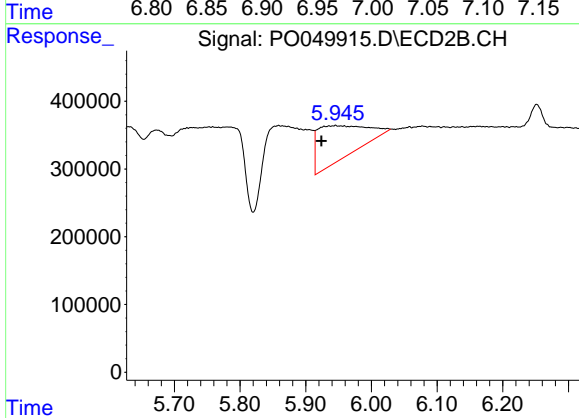
R.T.: 5.443 min
 Delta R.T.: 0.064 min
 Response: 613670
 Conc: 31.30 ng/ml



#28 AR-1254-3

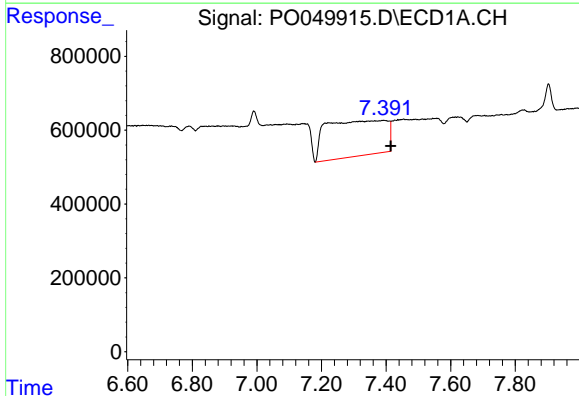
R.T.: 6.991 min
 Delta R.T.: -0.010 min
 Response: 506877
 Conc: 20.77 ng/ml

Instrument :
 ECD_O
 ClientSampled :



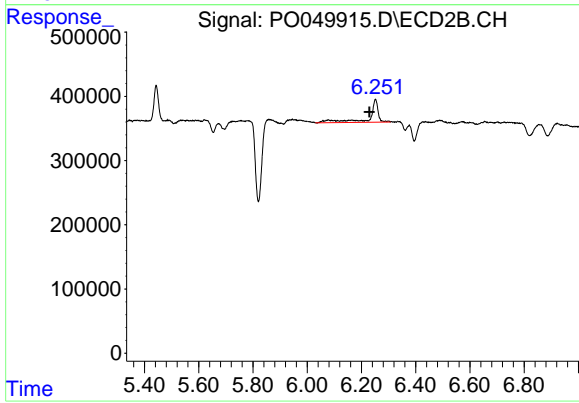
#28 AR-1254-3

R.T.: 5.945 min
 Delta R.T.: 0.022 min
 Response: 2523077
 Conc: 90.39 ng/ml



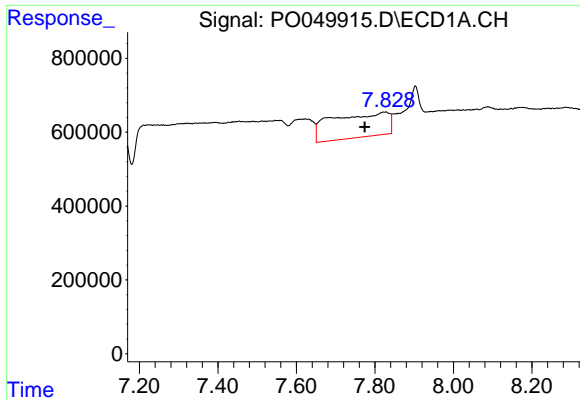
#32 AR-1260-2

R.T.: 7.392 min
 Delta R.T.: -0.023 min
 Response: 12462689
 Conc: 519.70 ng/ml



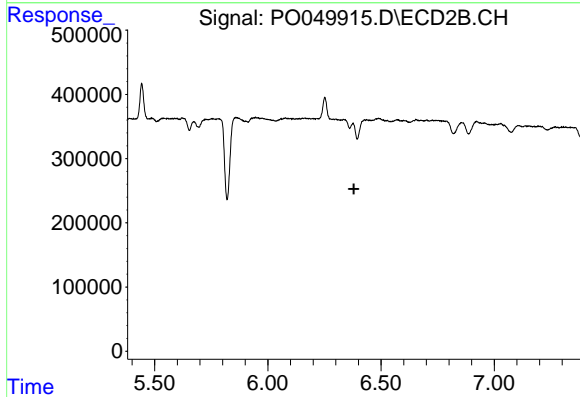
#32 AR-1260-2

R.T.: 6.252 min
 Delta R.T.: 0.023 min
 Response: 782697
 Conc: 27.91 ng/ml

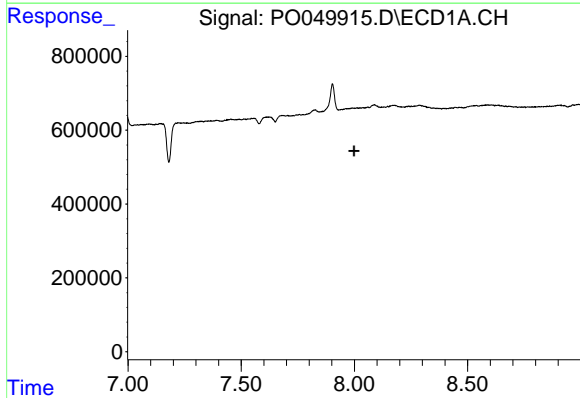


#33 AR-1260-3
 R.T.: 7.826 min
 Delta R.T.: 0.052 min
 Response: 6623803
 Conc: 350.35 ng/ml

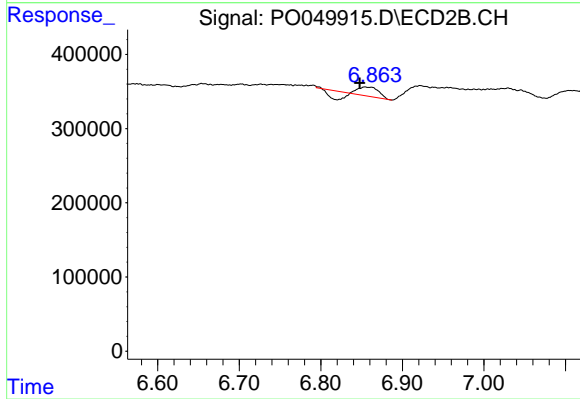
Instrument :
 ECD_O
 ClientSampleId :



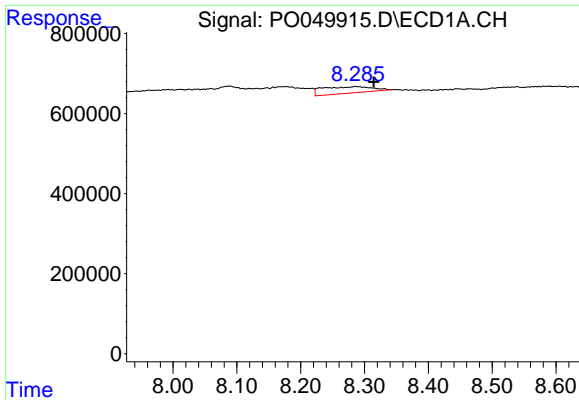
#33 AR-1260-3
 R.T.: 0.000 min
 Exp R.T. : 6.380 min
 Response: 0
 Conc: N.D.



#34 AR-1260-4
 R.T.: 0.000 min
 Exp R.T. : 7.998 min
 Response: 0
 Conc: N.D.



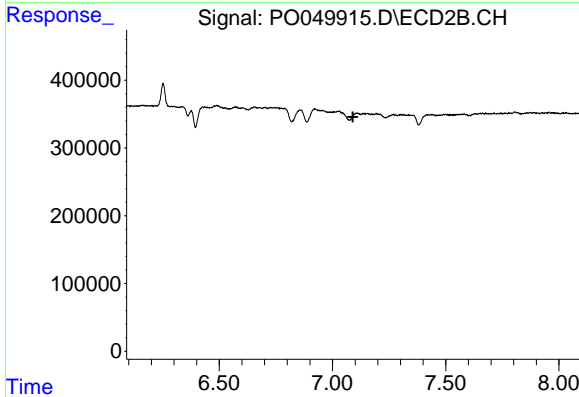
#34 AR-1260-4
 R.T.: 6.856 min
 Delta R.T.: 0.008 min
 Response: 91070
 Conc: 4.72 ng/ml



#35 AR-1260-5

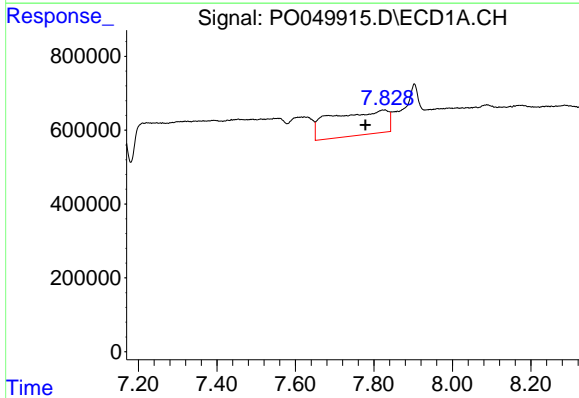
R.T.: 8.287 min
 Delta R.T.: -0.028 min
 Response: 890936
 Conc: 21.06 ng/ml

Instrument :
 ECD_O
 ClientSampleId :



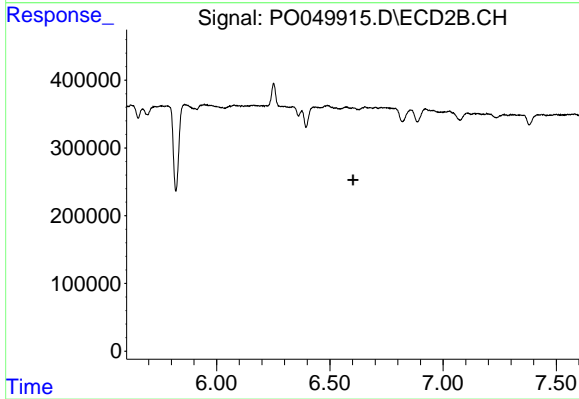
#35 AR-1260-5

R.T.: 0.000 min
 Exp R.T. : 7.090 min
 Response: 0
 Conc: N.D.



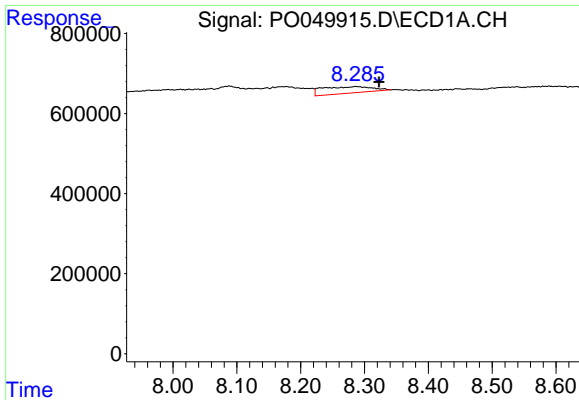
#36 AR-1262-1

R.T.: 7.826 min
 Delta R.T.: 0.047 min
 Response: 6623803
 Conc: 313.77 ng/ml



#36 AR-1262-1

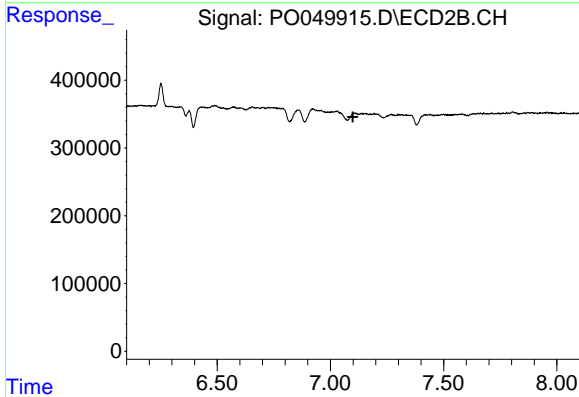
R.T.: 0.000 min
 Exp R.T. : 6.602 min
 Response: 0
 Conc: N.D.



#37 AR-1262-2

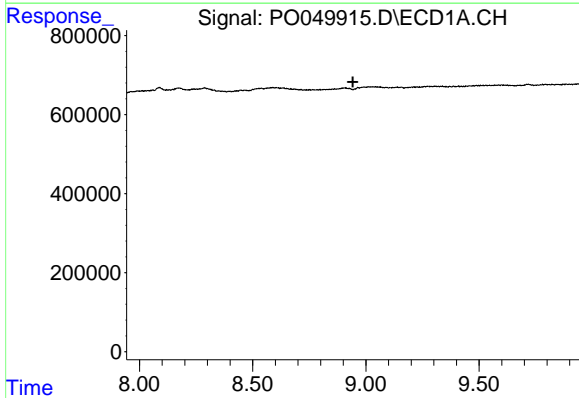
R.T.: 8.287 min
 Delta R.T.: -0.036 min
 Response: 890936
 Conc: 23.91 ng/ml

Instrument :
 ECD_O
 ClientSampled :



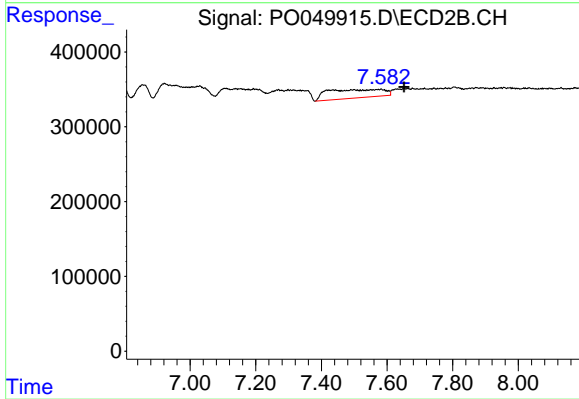
#37 AR-1262-2

R.T.: 0.000 min
 Exp R.T. : 7.099 min
 Response: 0
 Conc: N.D.



#43 AR-1268-3

R.T.: 0.000 min
 Exp R.T. : 8.943 min
 Response: 0
 Conc: N.D.



#43 AR-1268-3

R.T.: 7.581 min
 Delta R.T.: -0.070 min
 Response: 1342161
 Conc: 33.31 ng/ml