

Data Path : Z:\pestpcbsrv\HPCHEM1\ECD_0\Data\PO101118\
 Data File : PO049916.D
 Signal(s) : Signal #1: ECD1A.CH Signal #2: ECD2B.CH
 Acq On : 11 Oct 2018 15:50
 Operator : SM/SJ
 Sample : J5366-01
 Misc :
 ALS Vial : 9 Sample Multiplier: 1

Instrument :
 ECD_0
 ClientSampled :

Integration File signal 1: autoint1.e
 Integration File signal 2: autoint2.e
 Quant Time: Oct 11 17:00:23 2018
 Quant Method : Z:\pestpcbsrv\HPCHEM1\ECD_0\methods\PO100818.M
 Quant Title : GC EXTRACTABLES
 QLast Update : Mon Oct 08 15:27:38 2018
 Response via : Initial Calibration
 Integrator: ChemStation 6890 Scale Mode: Small noise peaks clipped

Volume Inj. : 2 µl
 Signal #1 Phase : ZB-MR1 Signal #2 Phase: ZB-MR2
 Signal #1 Info : 30Mx0.32mmx 0.50µ Signal #2 Info : 30M x 0.32mm x 0.25µm

| Compound | RT#1 | RT#2 | Resp#1 | Resp#2 | ng/ml | ng/ml |
|-----------------------------|--------|-------|----------|---------|----------|------------|
| System Monitoring Compounds | | | | | | |
| 1) SA Tetrachlo... | 4.363 | 3.485 | 12964886 | 2558421 | 57.353 | 10.607 # |
| 2) SA Decachlor... | 10.048 | 8.422 | 6351543 | 4482622 | 19.062 | 17.138 |
| Target Compounds | | | | | | |
| 3) L1 AR-1016-1 | 5.578 | 4.557 | 10557788 | 3369153 | 934.018 | 277.754 # |
| 4) L1 AR-1016-2 | 5.578 | 4.624 | 10557788 | 7218693 | 670.246 | 444.352 # |
| 5) L1 AR-1016-3 | 5.628 | 4.753 | 5580227 | 5420558 | 558.113 | 561.581 |
| 6) L1 AR-1016-4 | 5.769 | 4.810 | 10663586 | 3308779 | 1269.360 | 464.565 # |
| 7) L1 AR-1016-5 | 6.043 | 5.002 | 3283861 | 4735741 | 377.483 | 487.903 # |
| 8) L2 AR-1221-1 | 4.617 | 3.763 | 9229404 | 5273938 | 4012.592 | 1985.162 # |
| 9) L2 AR-1221-2 | 4.671 | 3.849 | 7798543 | 9596581 | 4277.151 | 4785.051 |
| 10) L2 AR-1221-3 | 4.751 | 3.849 | 4454872 | 9596581 | 753.008 | 1486.500 # |
| 11) L3 AR-1232-1 | 4.751 | 3.849 | 4454872 | 9596581 | 949.026 | 1990.996 # |
| 12) L3 AR-1232-2 | 5.269 | 4.624 | 6274844 | 7218693 | 2569.833 | 1240.751 # |
| 13) L3 AR-1232-3 | 5.578 | 4.753 | 10557788 | 5420558 | 2011.753 | 1645.240 |
| 14) L3 AR-1232-4 | 5.769 | 4.856 | 10663586 | 4915934 | 3848.306 | 1790.544 # |
| 15) L3 AR-1232-5 | 5.817 | 5.051 | 4029703 | 2004585 | 2076.949 | 641.506 # |
| 16) L4 AR-1242-1 | 5.578 | 4.557 | 10557788 | 3369153 | 1329.559 | 406.293 # |
| 17) L4 AR-1242-2 | 5.578 | 4.624 | 10557788 | 7218693 | 963.167 | 626.597 # |
| 18) L4 AR-1242-3 | 5.628 | 4.753 | 5580227 | 5420558 | 803.757 | 843.629 |
| 19) L4 AR-1242-4 | 5.769 | 4.856 | 10663586 | 4915934 | 1793.876 | 821.078 # |
| 20) L4 AR-1242-5 | 6.427 | 5.371 | 7468904 | 5193348 | 1038.122 | 647.058 # |
| 21) L5 AR-1248-1 | 5.578 | 4.557 | 10557788 | 3369153 | 1756.685 | 507.757 # |
| 22) L5 AR-1248-2 | 5.817 | 4.810 | 4029703 | 3308779 | 484.175 | 388.932 |
| 23) L5 AR-1248-3 | 6.043 | 4.856 | 3283861 | 4915934 | 339.635 | 560.094 # |
| 24) L5 AR-1248-4 | 6.427 | 5.051 | 7468904 | 2004585 | 603.666 | 184.451 # |
| 25) L5 AR-1248-5 | 6.535 | 5.414 | 7234834 | 3053366 | 616.445 | 268.960 # |
| 26) L6 AR-1254-1 | 6.427 | 5.371 | 7468904 | 5193348 | 543.138 | 264.918 # |
| 27) L6 AR-1254-2 | 6.620 | 5.498 | 7673011 | 4324767 | 347.518 | 258.390 # |
| 28) L6 AR-1254-3 | 6.998 | 5.918 | 2756323 | 2674075 | 112.968 | 95.798 |
| 29) L6 AR-1254-4 | 7.256 | 6.152 | 5301478 | 7699219 | 258.496 | 383.690 # |
| 30) L6 AR-1254-5 | 0.000 | 6.580 | 0 | 3976945 | N.D. | 148.628 # |
| 31) L7 AR-1260-1 | 7.131 | 6.074 | 7486005 | 3597404 | 405.727 | 174.220 # |
| 32) L7 AR-1260-2 | 7.446 | 6.235 | 5494277 | 7153808 | 229.115 | 255.138 |
| 33) L7 AR-1260-3 | 7.809 | 6.404 | 13883184 | 4116200 | 734.309 | 168.910 # |
| 34) L7 AR-1260-4 | 8.000 | 6.860 | 1993019 | 3602914 | 104.964 | 186.554 # |
| 35) L7 AR-1260-5 | 8.289 | 7.077 | 4286406 | 5814189 | 101.324 | 113.405 |
| 36) L8 AR-1262-1 | 7.809 | 6.580 | 13883184 | 3976945 | 657.656 | 162.125 # |
| 37) L8 AR-1262-2 | 8.289 | 7.077 | 4286406 | 5814189 | 115.052 | 137.386 |
| 38) L8 AR-1262-3 | 8.680 | 7.329 | 4310669 | 5810397 | 178.701 | 345.228 # |
| 39) L8 AR-1262-4 | 8.680 | 7.462 | 4310669 | 2336343 | 227.287 | 79.285 # |
| 40) L8 AR-1262-5 | 0.000 | 7.912 | 0 | 1178991 | N.D. | 88.454 # |
| 41) L9 AR-1268-1 | 8.680 | 7.329 | 4310669 | 5810397 | 86.219 | 108.622 # |

Data Path : Z:\pestpcbsrv\HPCHEM1\ECD_0\Data\PO101118\
 Data File : PO049916.D
 Signal(s) : Signal #1: ECD1A.CH Signal #2: ECD2B.CH
 Acq On : 11 Oct 2018 15:50
 Operator : SM/SJ
 Sample : J5366-01
 Misc :
 ALS Vial : 9 Sample Multiplier: 1

Instrument :
 ECD_0
 ClientSampleId :

Integration File signal 1: autoint1.e
 Integration File signal 2: autoint2.e
 Quant Time: Oct 11 17:00:23 2018
 Quant Method : Z:\pestpcbsrv\HPCHEM1\ECD_0\methods\PO100818.M
 Quant Title : GC EXTRACTABLES
 QLast Update : Mon Oct 08 15:27:38 2018
 Response via : Initial Calibration
 Integrator: ChemStation 6890 Scale Mode: Small noise peaks clipped

Volume Inj. : 2 µl
 Signal #1 Phase : ZB-MR1 Signal #2 Phase: ZB-MR2
 Signal #1 Info : 30Mx0.32mmx 0.50µ Signal #2 Info : 30M x 0.32mm x 0.25µm

| | Compound | RT#1 | RT#2 | Resp#1 | Resp#2 | ng/ml | ng/ml |
|-----|--------------|-------|-------|---------|---------|--------|-----------|
| 42) | L9 AR-1268-2 | 8.680 | 7.462 | 4310669 | 2336343 | 95.042 | 48.169 # |
| 43) | L9 AR-1268-3 | 0.000 | 7.669 | 0 | 4270835 | N.D. | 106.008 # |
| 44) | L9 AR-1268-4 | 0.000 | 7.912 | 0 | 1178991 | N.D. | 70.800 # |

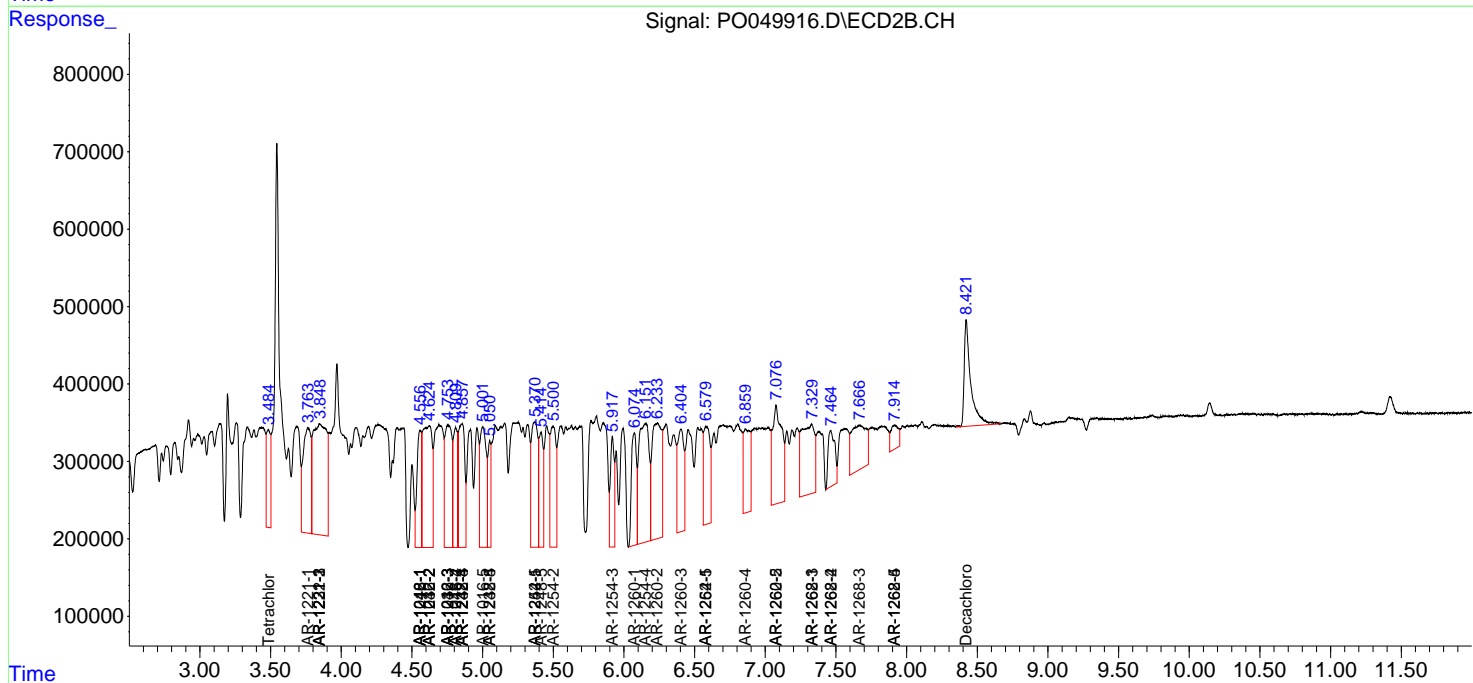
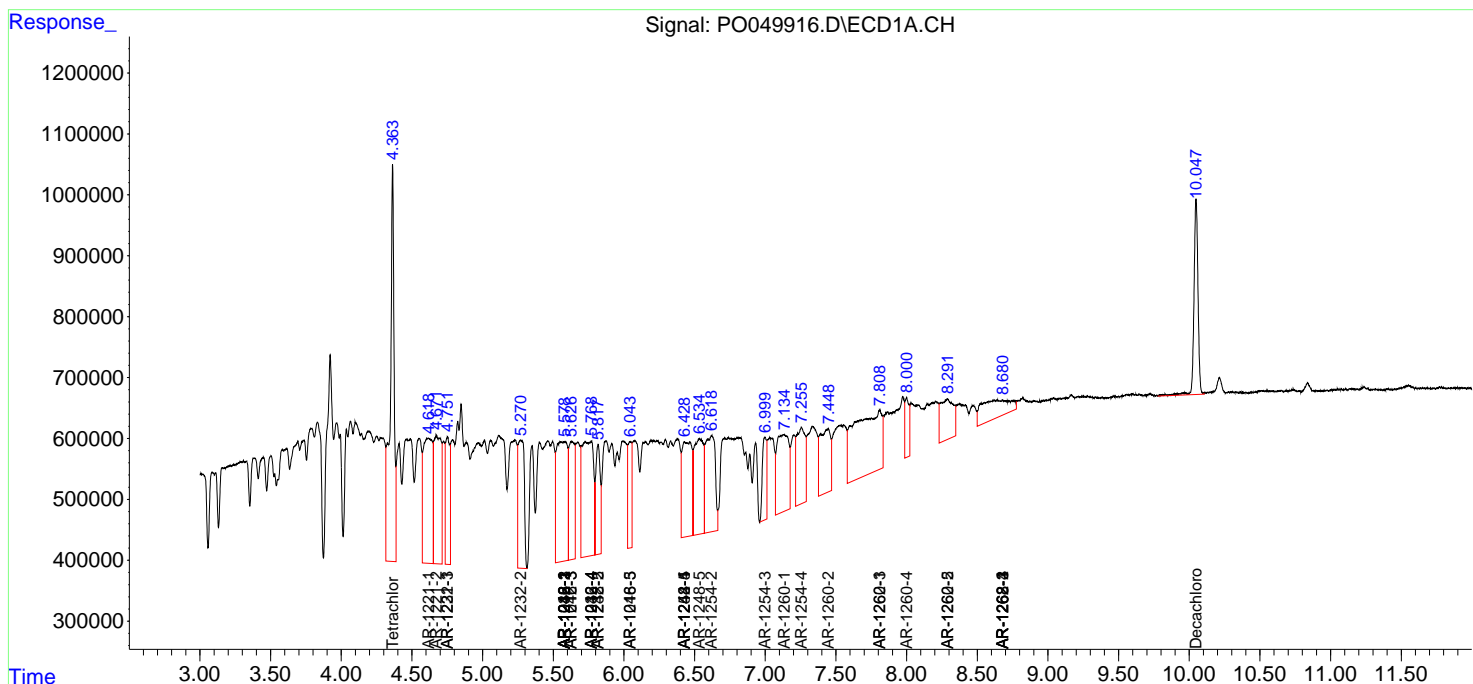
(f)=RT Delta > 1/2 Window (#)=Amounts differ by > 25% (m)=manual int.

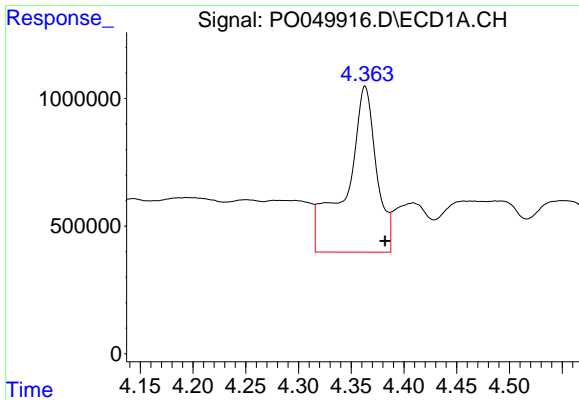
Data Path : Z:\pestpcbsrv\HPCHEM1\ECD_O\Data\PO101118\
 Data File : P0049916.D
 Signal(s) : Signal #1: ECD1A.CH Signal #2: ECD2B.CH
 Acq On : 11 Oct 2018 15:50
 Operator : SM/SJ
 Sample : J5366-01
 Misc :
 ALS Vial : 9 Sample Multiplier: 1

Instrument :
 ECD_O
 ClientSampled :

Integration File signal 1: autoint1.e
 Integration File signal 2: autoint2.e
 Quant Time: Oct 11 17:00:23 2018
 Quant Method : Z:\pestpcbsrv\HPCHEM1\ECD_O\methods\PO100818.M
 Quant Title : GC EXTRACTABLES
 QLast Update : Mon Oct 08 15:27:38 2018
 Response via : Initial Calibration
 Integrator: ChemStation 6890 Scale Mode: Small noise peaks clipped

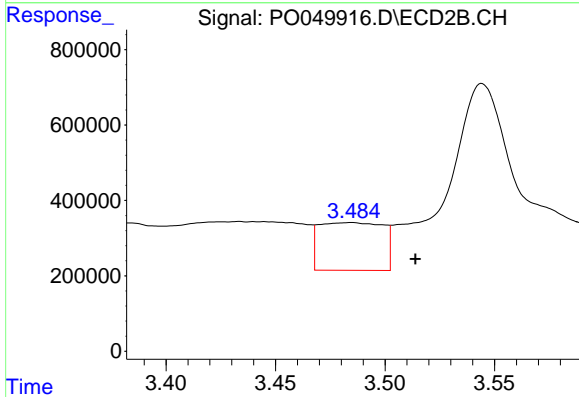
Volume Inj. : 2 µl
 Signal #1 Phase : ZB-MR1 Signal #2 Phase: ZB-MR2
 Signal #1 Info : 30Mx0.32mmx 0.50µ Signal #2 Info : 30M x 0.32mm x 0.25µm



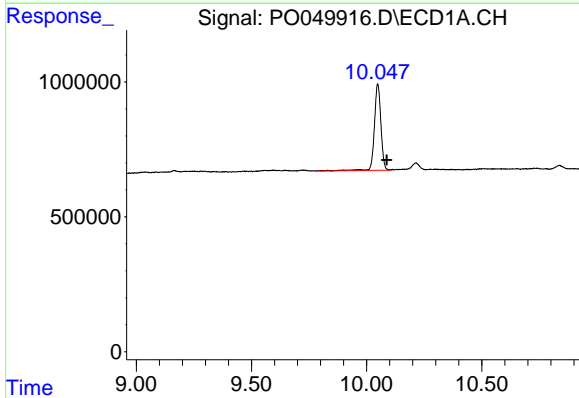


#1 Tetrachloro-m-xylene
 R.T.: 4.363 min
 Delta R.T.: -0.019 min
 Response: 12964886
 Conc: 57.35 ng/ml

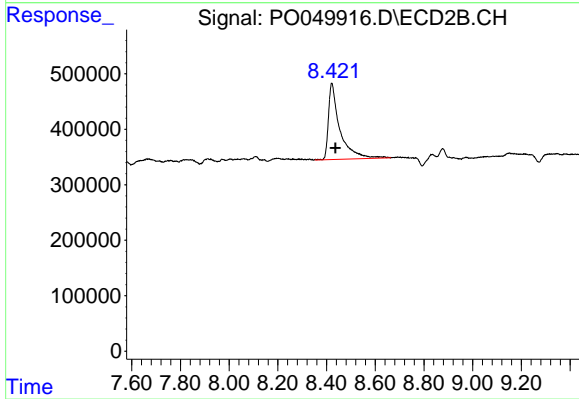
Instrument :
 ECD_O
 ClientSampled :



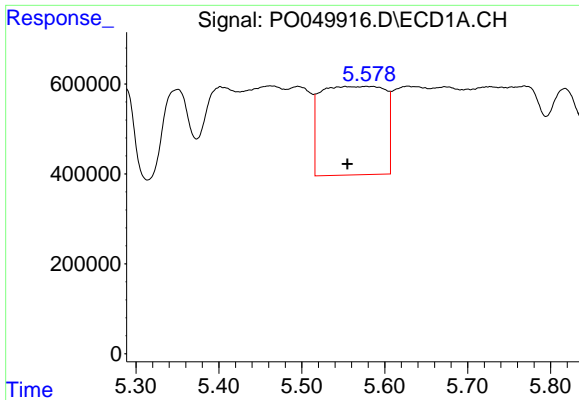
#1 Tetrachloro-m-xylene
 R.T.: 3.485 min
 Delta R.T.: -0.029 min
 Response: 2558421
 Conc: 10.61 ng/ml



#2 Decachlorobiphenyl
 R.T.: 10.048 min
 Delta R.T.: -0.038 min
 Response: 6351543
 Conc: 19.06 ng/ml



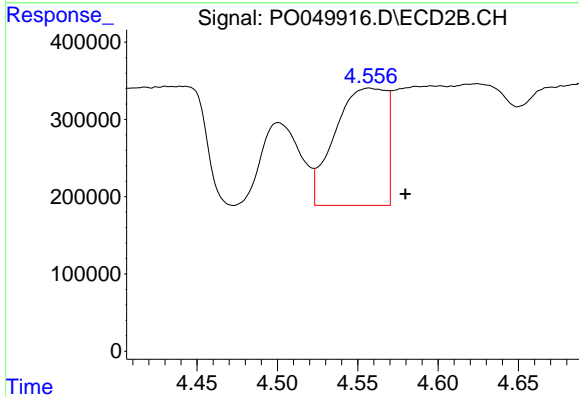
#2 Decachlorobiphenyl
 R.T.: 8.422 min
 Delta R.T.: -0.015 min
 Response: 4482622
 Conc: 17.14 ng/ml



#3 AR-1016-1

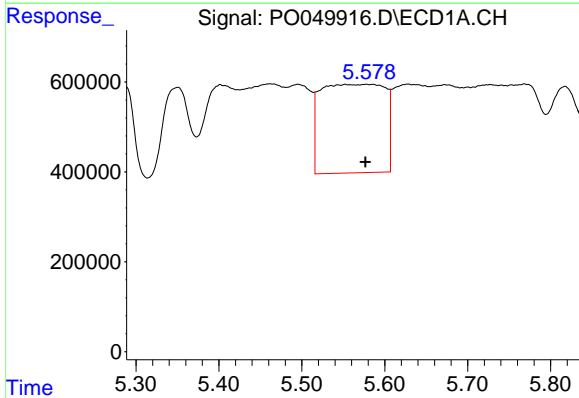
R.T.: 5.578 min
 Delta R.T.: 0.023 min
 Response: 10557788
 Conc: 934.02 ng/ml

Instrument :
 ECD_O
 ClientSampleId :



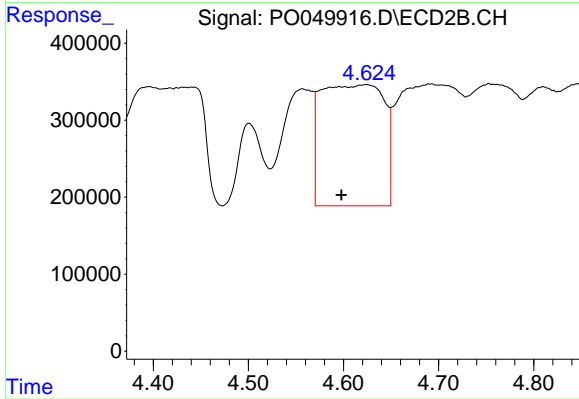
#3 AR-1016-1

R.T.: 4.557 min
 Delta R.T.: -0.023 min
 Response: 3369153
 Conc: 277.75 ng/ml



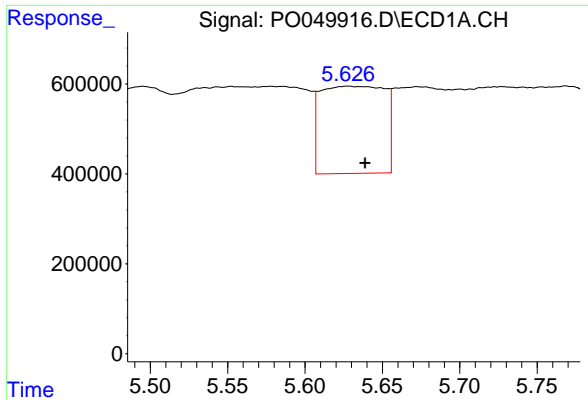
#4 AR-1016-2

R.T.: 5.578 min
 Delta R.T.: 0.001 min
 Response: 10557788
 Conc: 670.25 ng/ml



#4 AR-1016-2

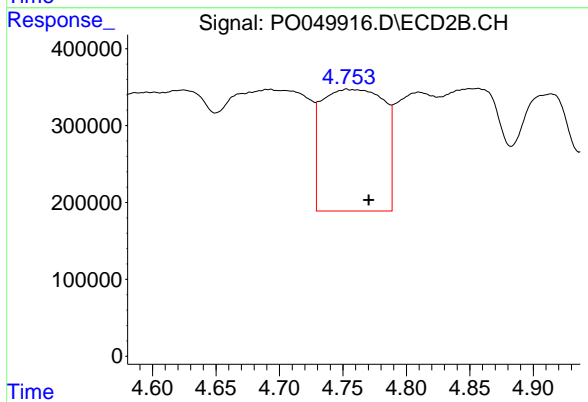
R.T.: 4.624 min
 Delta R.T.: 0.026 min
 Response: 7218693
 Conc: 444.35 ng/ml



#5 AR-1016-3

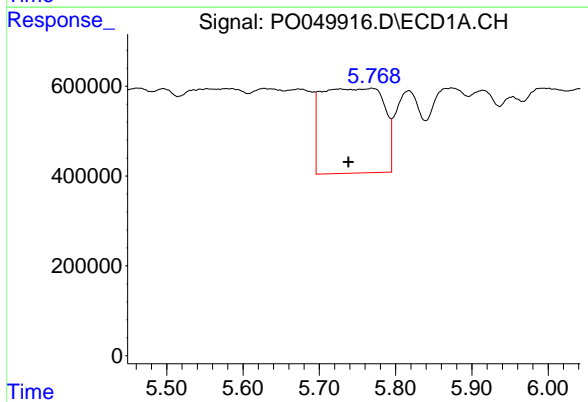
R.T.: 5.628 min
 Delta R.T.: -0.011 min
 Response: 5580227
 Conc: 558.11 ng/ml

Instrument :
 ECD_O
 ClientSampleId :



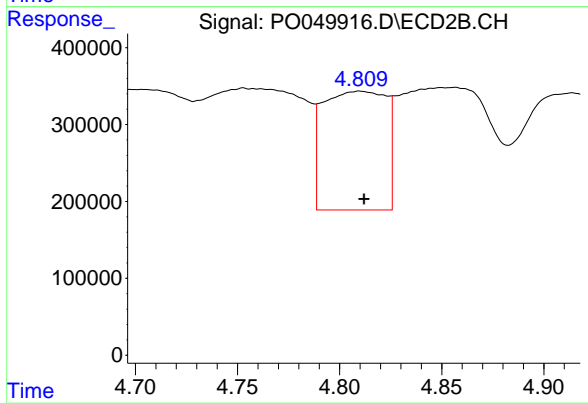
#5 AR-1016-3

R.T.: 4.753 min
 Delta R.T.: -0.017 min
 Response: 5420558
 Conc: 561.58 ng/ml



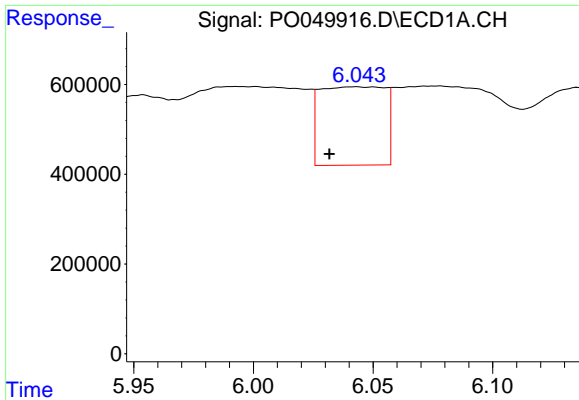
#6 AR-1016-4

R.T.: 5.769 min
 Delta R.T.: 0.030 min
 Response: 10663586
 Conc: 1269.36 ng/ml



#6 AR-1016-4

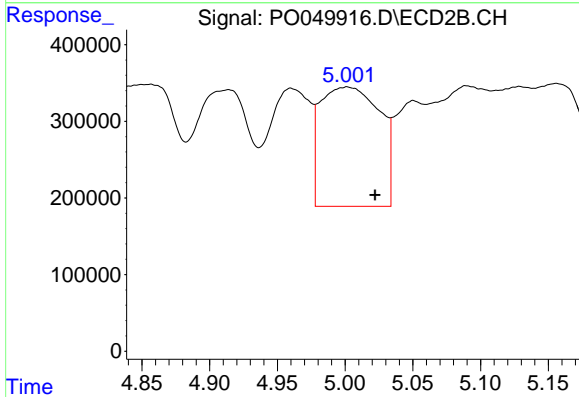
R.T.: 4.810 min
 Delta R.T.: -0.002 min
 Response: 3308779
 Conc: 464.57 ng/ml



#7 AR-1016-5

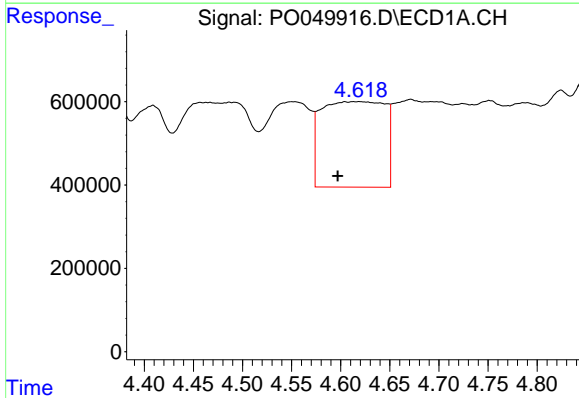
R.T.: 6.043 min
 Delta R.T.: 0.011 min
 Response: 3283861
 Conc: 377.48 ng/ml

Instrument :
 ECD_O
 ClientSampleId :



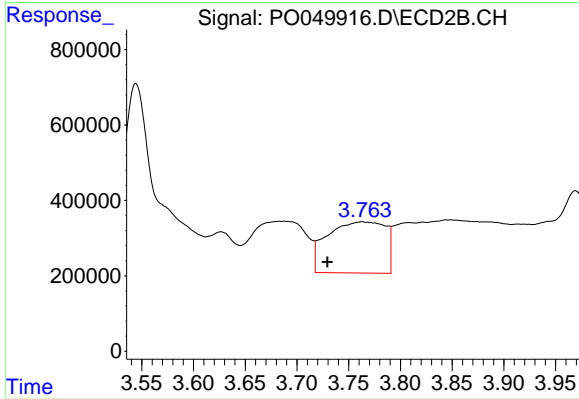
#7 AR-1016-5

R.T.: 5.002 min
 Delta R.T.: -0.021 min
 Response: 4735741
 Conc: 487.90 ng/ml



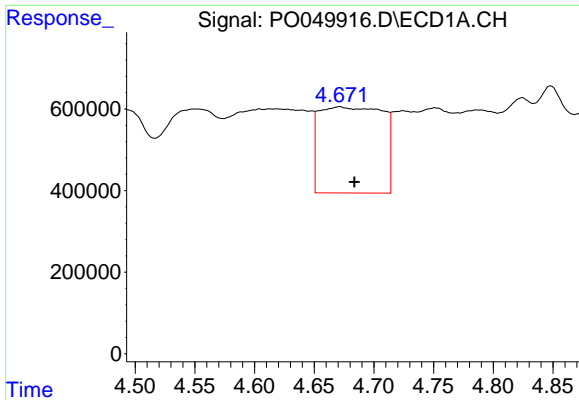
#8 AR-1221-1

R.T.: 4.617 min
 Delta R.T.: 0.020 min
 Response: 9229404
 Conc: 4012.59 ng/ml



#8 AR-1221-1

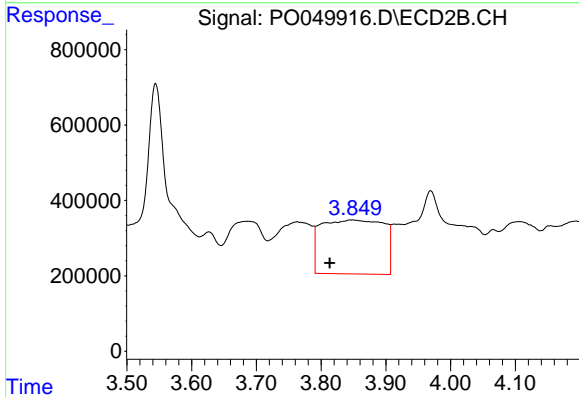
R.T.: 3.763 min
 Delta R.T.: 0.033 min
 Response: 5273938
 Conc: 1985.16 ng/ml



#9 AR-1221-2

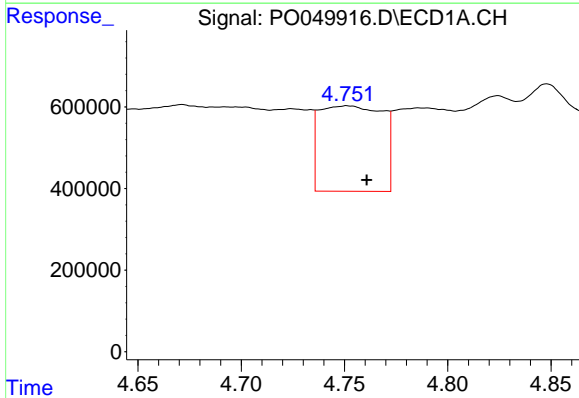
R.T.: 4.671 min
 Delta R.T.: -0.012 min
 Response: 7798543
 Conc: 4277.15 ng/ml

Instrument :
 ECD_O
 ClientSampleId :



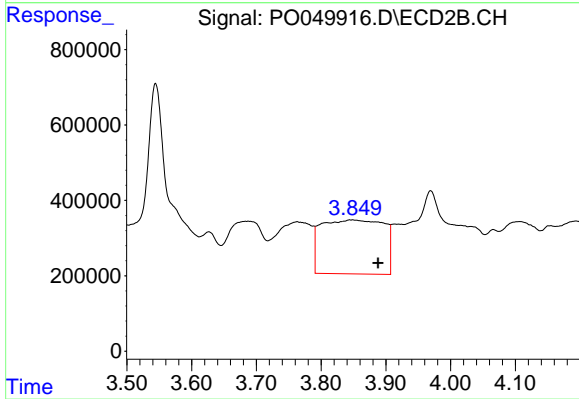
#9 AR-1221-2

R.T.: 3.849 min
 Delta R.T.: 0.035 min
 Response: 9596581
 Conc: 4785.05 ng/ml



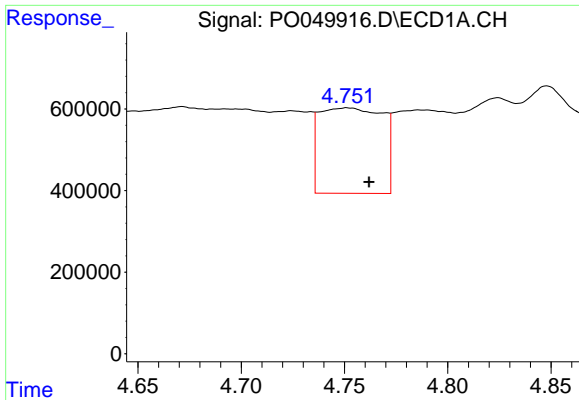
#10 AR-1221-3

R.T.: 4.751 min
 Delta R.T.: -0.010 min
 Response: 4454872
 Conc: 753.01 ng/ml



#10 AR-1221-3

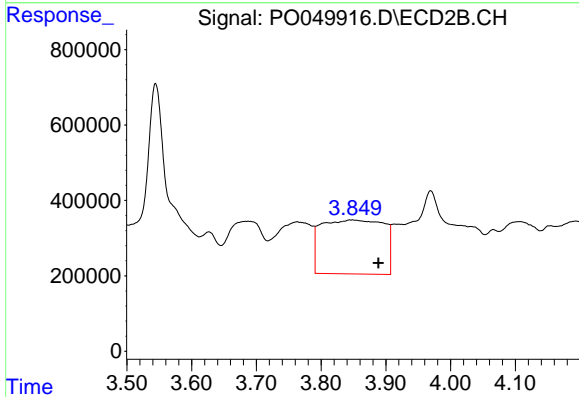
R.T.: 3.849 min
 Delta R.T.: -0.040 min
 Response: 9596581
 Conc: 1486.50 ng/ml



#11 AR-1232-1

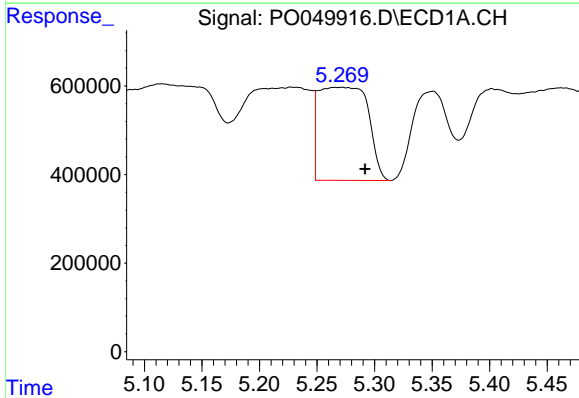
R.T.: 4.751 min
 Delta R.T.: -0.011 min
 Response: 4454872
 Conc: 949.03 ng/ml

Instrument :
 ECD_O
 ClientSampled :



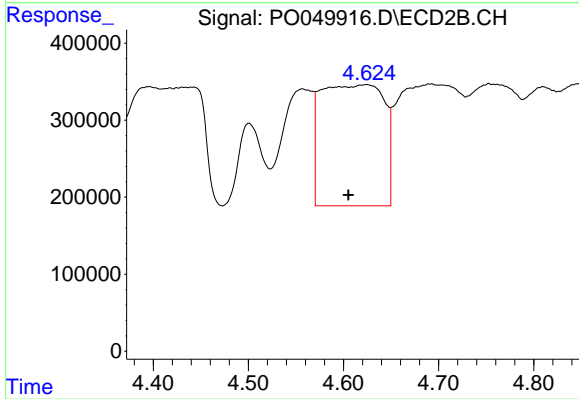
#11 AR-1232-1

R.T.: 3.849 min
 Delta R.T.: -0.040 min
 Response: 9596581
 Conc: 1991.00 ng/ml



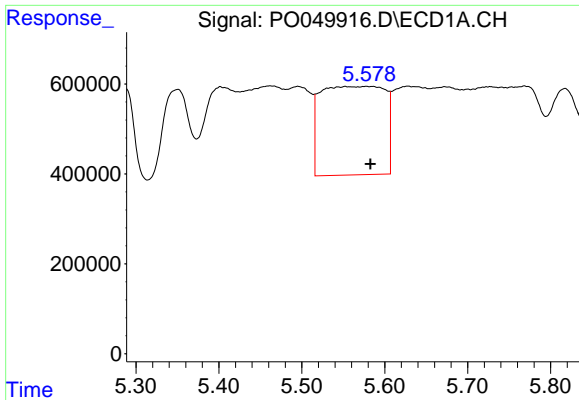
#12 AR-1232-2

R.T.: 5.269 min
 Delta R.T.: -0.023 min
 Response: 6274844
 Conc: 2569.83 ng/ml



#12 AR-1232-2

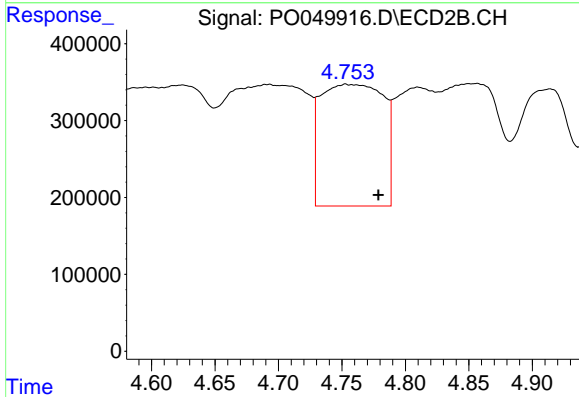
R.T.: 4.624 min
 Delta R.T.: 0.019 min
 Response: 7218693
 Conc: 1240.75 ng/ml



#13 AR-1232-3

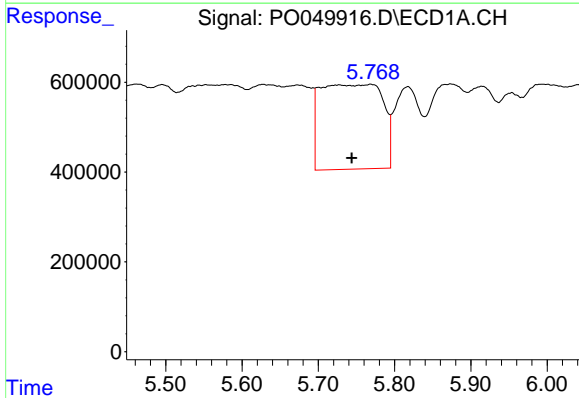
R.T.: 5.578 min
 Delta R.T.: -0.004 min
 Response: 10557788
 Conc: 2011.75 ng/ml

Instrument :
 ECD_O
 ClientSampleId :



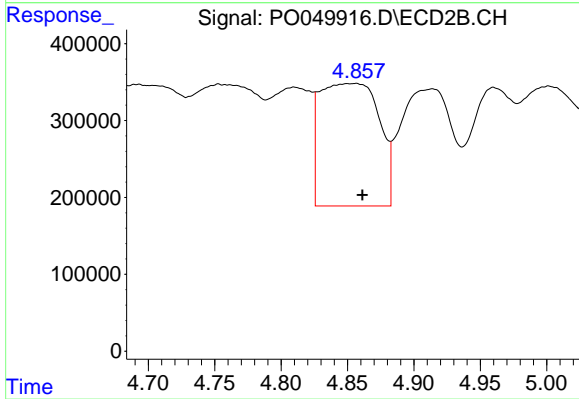
#13 AR-1232-3

R.T.: 4.753 min
 Delta R.T.: -0.026 min
 Response: 5420558
 Conc: 1645.24 ng/ml



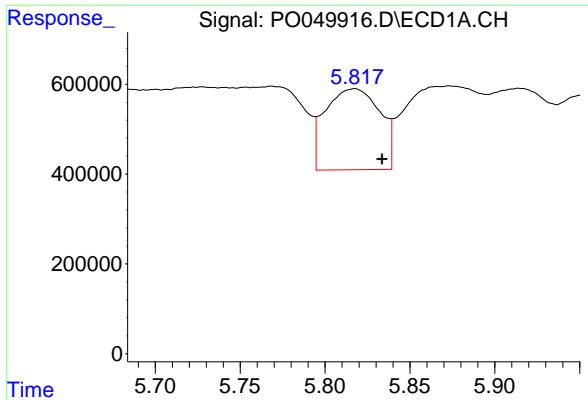
#14 AR-1232-4

R.T.: 5.769 min
 Delta R.T.: 0.025 min
 Response: 10663586
 Conc: 3848.31 ng/ml



#14 AR-1232-4

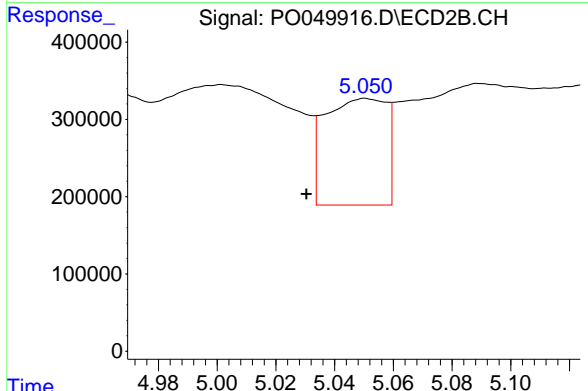
R.T.: 4.856 min
 Delta R.T.: -0.005 min
 Response: 4915934
 Conc: 1790.54 ng/ml



#15 AR-1232-5

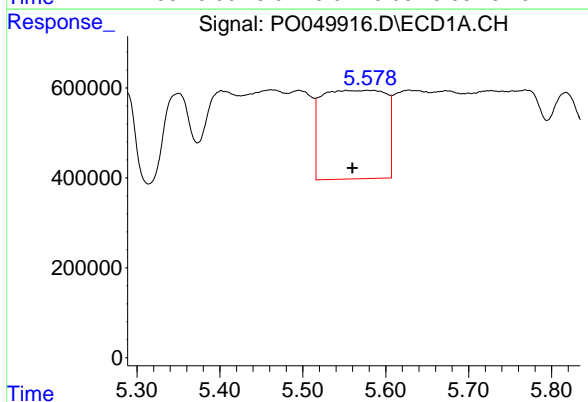
R.T.: 5.817 min
 Delta R.T.: -0.017 min
 Response: 4029703
 Conc: 2076.95 ng/ml

Instrument :
 ECD_O
 ClientSampleId :



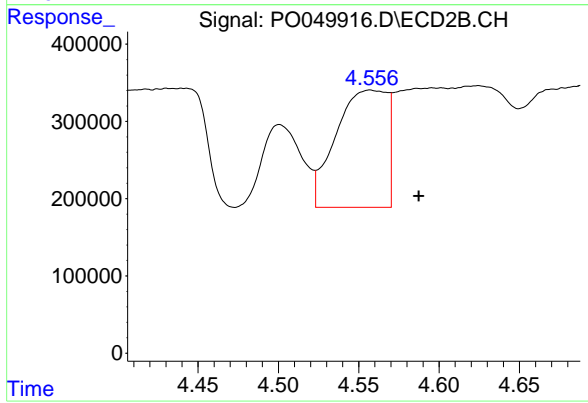
#15 AR-1232-5

R.T.: 5.051 min
 Delta R.T.: 0.020 min
 Response: 2004585
 Conc: 641.51 ng/ml



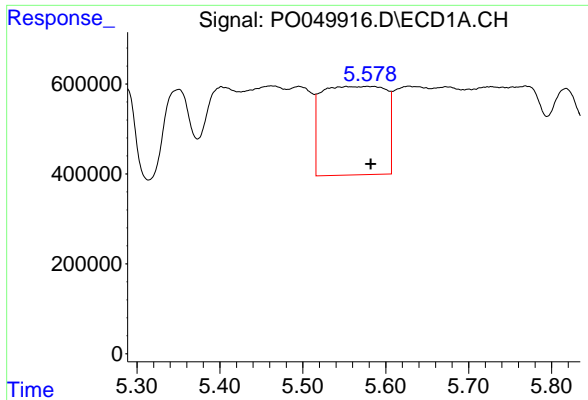
#16 AR-1242-1

R.T.: 5.578 min
 Delta R.T.: 0.019 min
 Response: 10557788
 Conc: 1329.56 ng/ml



#16 AR-1242-1

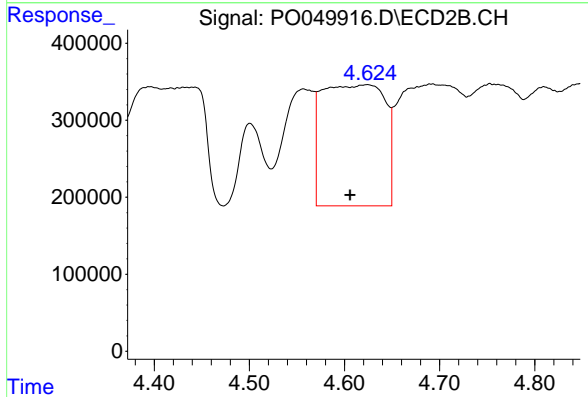
R.T.: 4.557 min
 Delta R.T.: -0.030 min
 Response: 3369153
 Conc: 406.29 ng/ml



#17 AR-1242-2

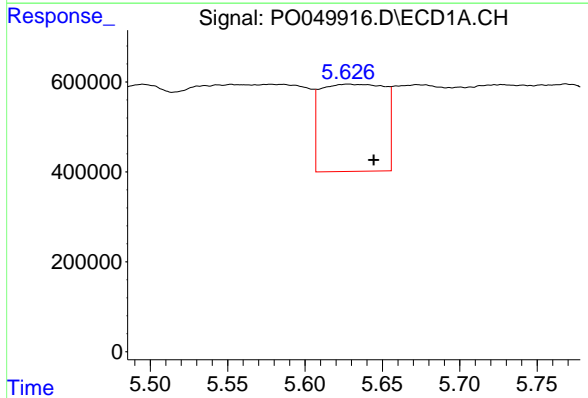
R.T.: 5.578 min
 Delta R.T.: -0.004 min
 Response: 10557788
 Conc: 963.17 ng/ml

Instrument :
 ECD_O
 ClientSampleId :



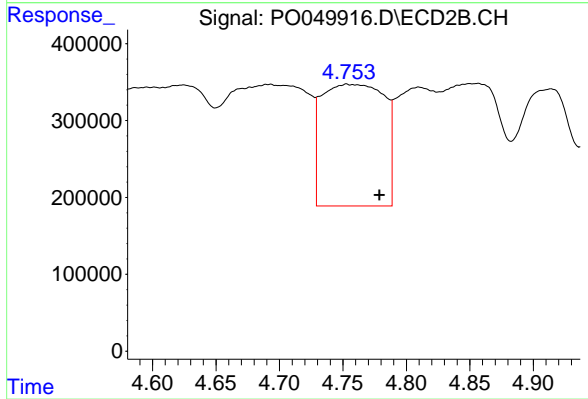
#17 AR-1242-2

R.T.: 4.624 min
 Delta R.T.: 0.018 min
 Response: 7218693
 Conc: 626.60 ng/ml



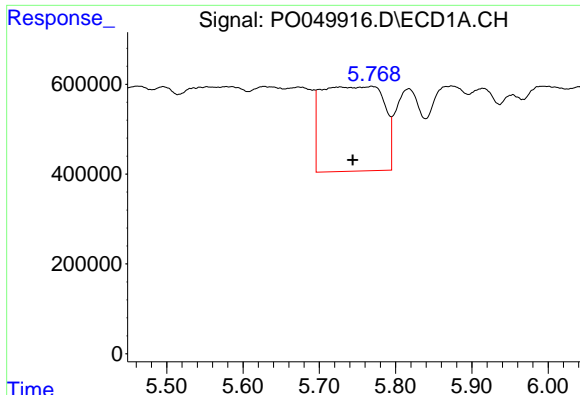
#18 AR-1242-3

R.T.: 5.628 min
 Delta R.T.: -0.017 min
 Response: 5580227
 Conc: 803.76 ng/ml



#18 AR-1242-3

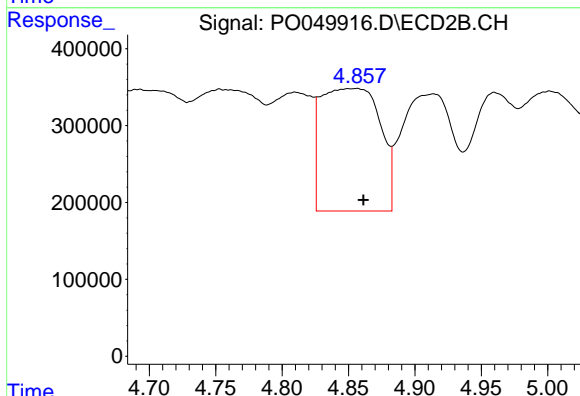
R.T.: 4.753 min
 Delta R.T.: -0.026 min
 Response: 5420558
 Conc: 843.63 ng/ml



#19 AR-1242-4

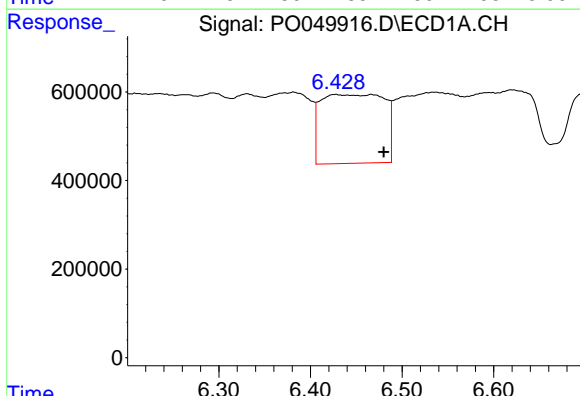
R.T.: 5.769 min
 Delta R.T.: 0.025 min
 Response: 10663586
 Conc: 1793.88 ng/ml

Instrument :
 ECD_O
 ClientSampleId :



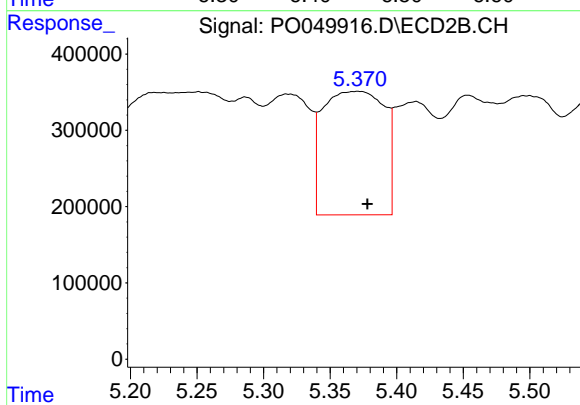
#19 AR-1242-4

R.T.: 4.856 min
 Delta R.T.: -0.005 min
 Response: 4915934
 Conc: 821.08 ng/ml



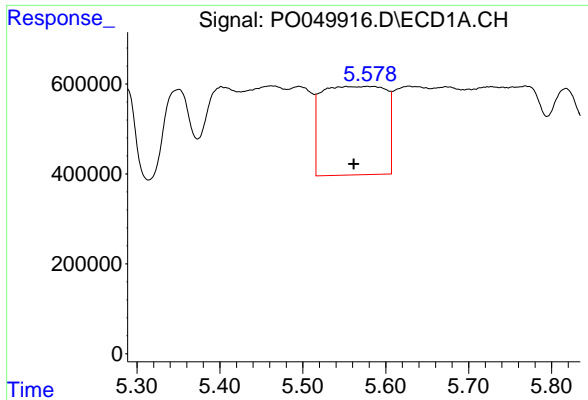
#20 AR-1242-5

R.T.: 6.427 min
 Delta R.T.: -0.053 min
 Response: 7468904
 Conc: 1038.12 ng/ml



#20 AR-1242-5

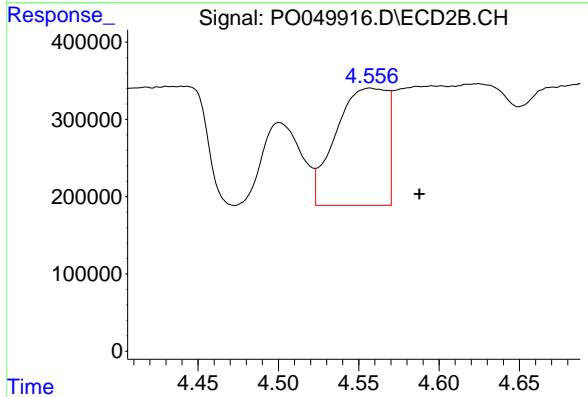
R.T.: 5.371 min
 Delta R.T.: -0.007 min
 Response: 5193348
 Conc: 647.06 ng/ml



#21 AR-1248-1

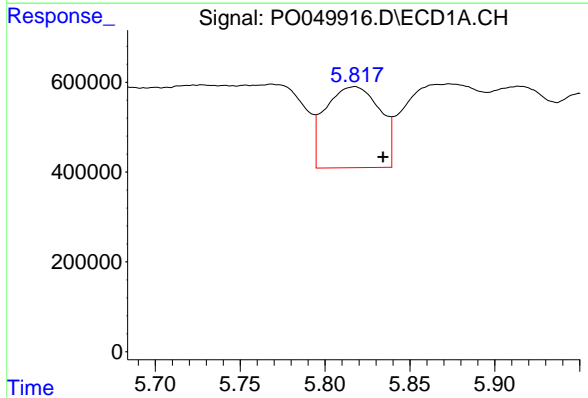
R.T.: 5.578 min
 Delta R.T.: 0.017 min
 Response: 10557788
 Conc: 1756.68 ng/ml

Instrument :
 ECD_O
 ClientSampleId :



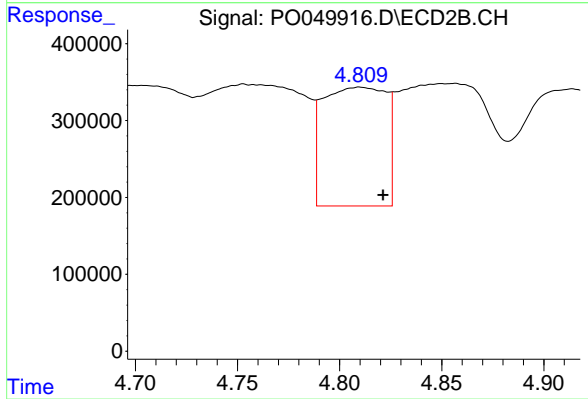
#21 AR-1248-1

R.T.: 4.557 min
 Delta R.T.: -0.031 min
 Response: 3369153
 Conc: 507.76 ng/ml



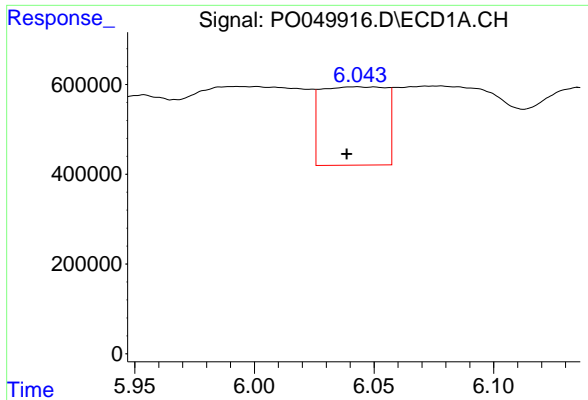
#22 AR-1248-2

R.T.: 5.817 min
 Delta R.T.: -0.017 min
 Response: 4029703
 Conc: 484.17 ng/ml



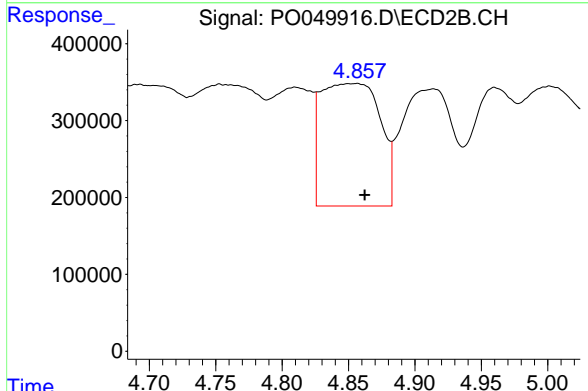
#22 AR-1248-2

R.T.: 4.810 min
 Delta R.T.: -0.011 min
 Response: 3308779
 Conc: 388.93 ng/ml

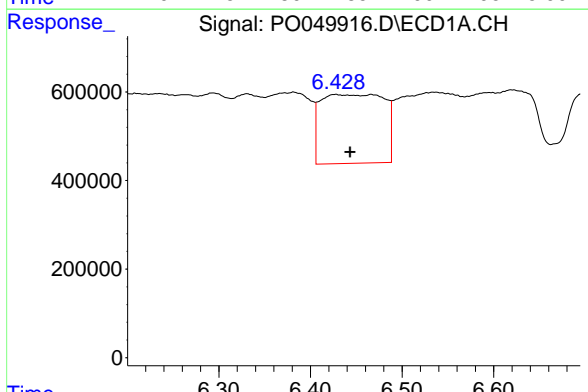


#23 AR-1248-3
 R.T.: 6.043 min
 Delta R.T.: 0.004 min
 Response: 3283861
 Conc: 339.64 ng/ml

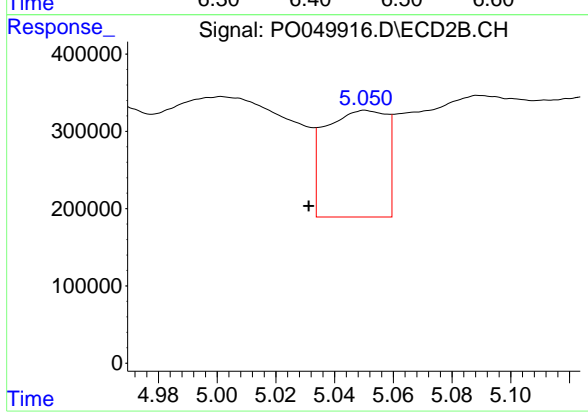
Instrument :
 ECD_O
 ClientSampleId :



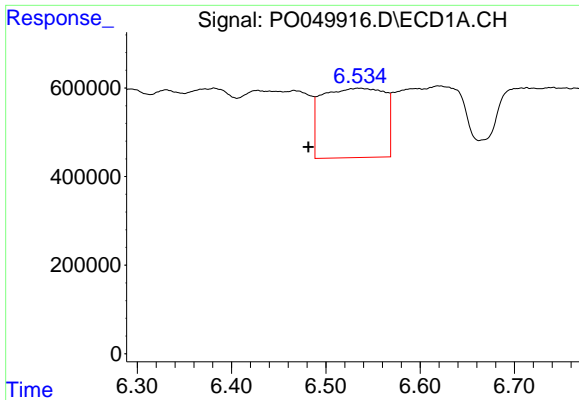
#23 AR-1248-3
 R.T.: 4.856 min
 Delta R.T.: -0.006 min
 Response: 4915934
 Conc: 560.09 ng/ml



#24 AR-1248-4
 R.T.: 6.427 min
 Delta R.T.: -0.016 min
 Response: 7468904
 Conc: 603.67 ng/ml



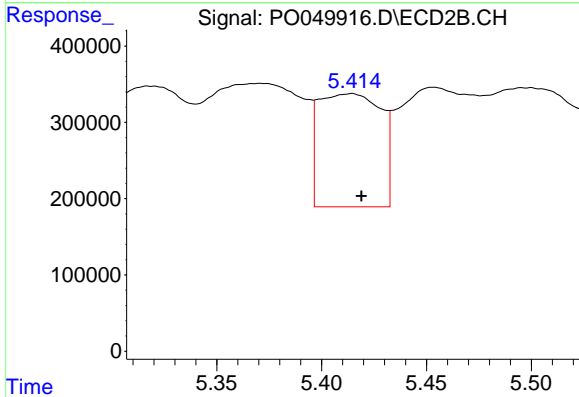
#24 AR-1248-4
 R.T.: 5.051 min
 Delta R.T.: 0.019 min
 Response: 2004585
 Conc: 184.45 ng/ml



#25 AR-1248-5

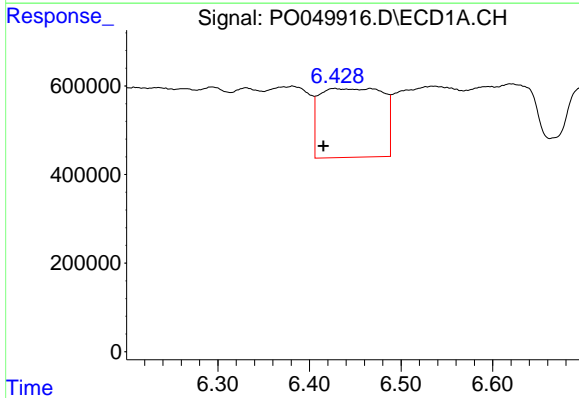
R.T.: 6.535 min
 Delta R.T.: 0.054 min
 Response: 7234834
 Conc: 616.45 ng/ml

Instrument :
 ECD_O
 ClientSampleId :



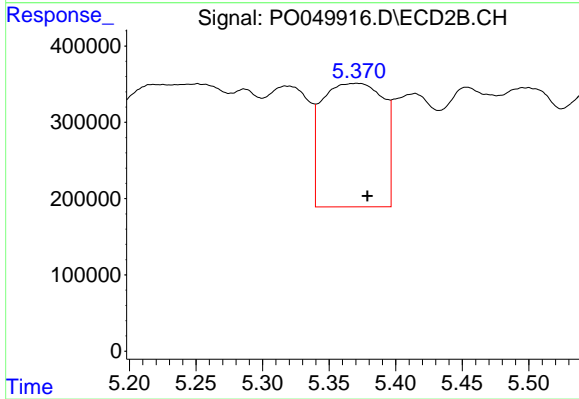
#25 AR-1248-5

R.T.: 5.414 min
 Delta R.T.: -0.005 min
 Response: 3053366
 Conc: 268.96 ng/ml



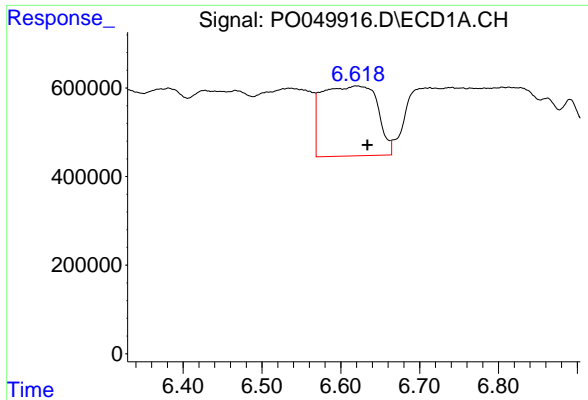
#26 AR-1254-1

R.T.: 6.427 min
 Delta R.T.: 0.012 min
 Response: 7468904
 Conc: 543.14 ng/ml



#26 AR-1254-1

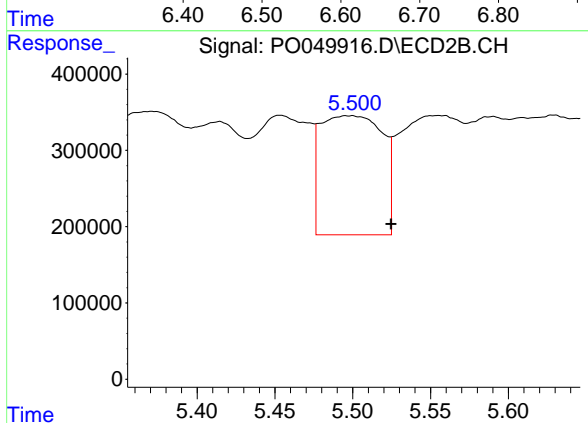
R.T.: 5.371 min
 Delta R.T.: -0.008 min
 Response: 5193348
 Conc: 264.92 ng/ml



#27 AR-1254-2

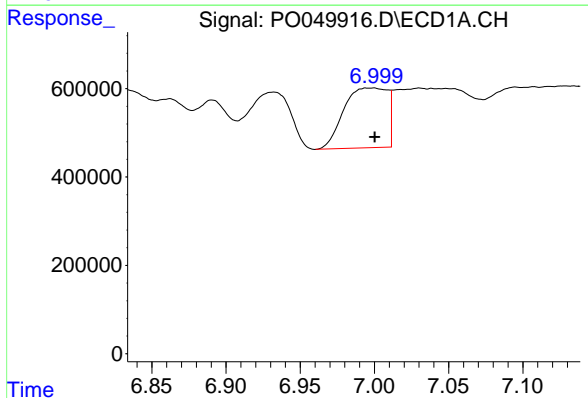
R.T.: 6.620 min
 Delta R.T.: -0.014 min
 Response: 7673011
 Conc: 347.52 ng/ml

Instrument :
 ECD_O
 ClientSampleId :



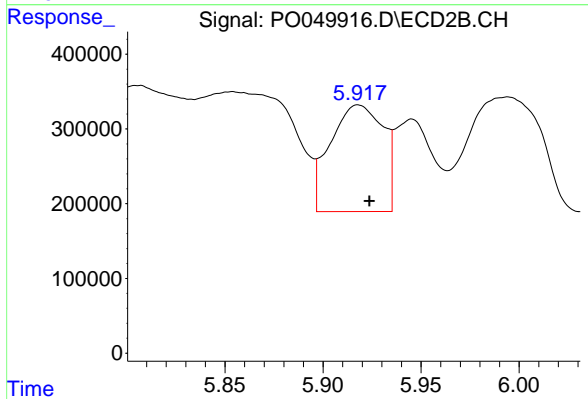
#27 AR-1254-2

R.T.: 5.498 min
 Delta R.T.: -0.027 min
 Response: 4324767
 Conc: 258.39 ng/ml



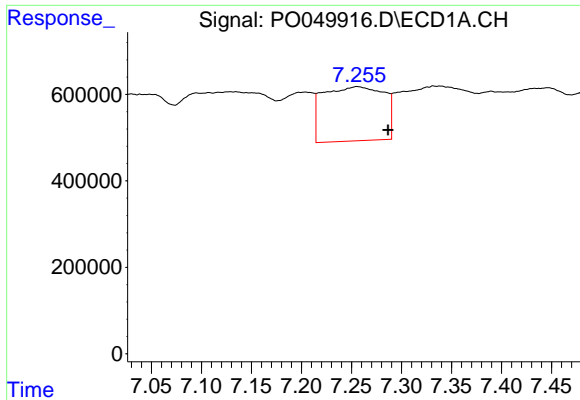
#28 AR-1254-3

R.T.: 6.998 min
 Delta R.T.: -0.003 min
 Response: 2756323
 Conc: 112.97 ng/ml



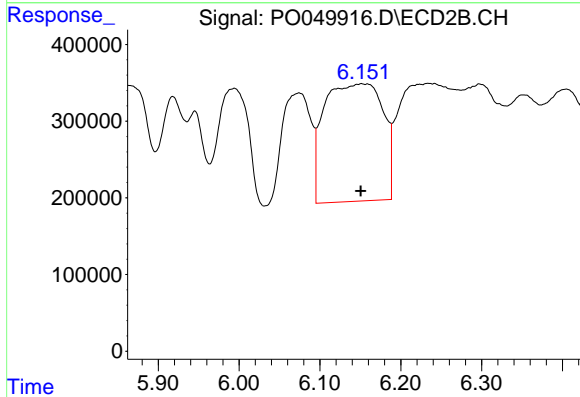
#28 AR-1254-3

R.T.: 5.918 min
 Delta R.T.: -0.006 min
 Response: 2674075
 Conc: 95.80 ng/ml

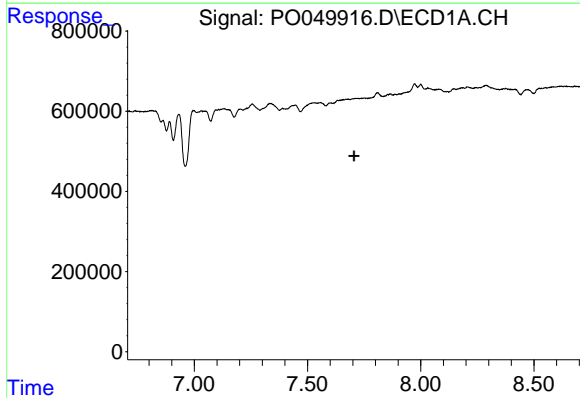


#29 AR-1254-4
 R.T.: 7.256 min
 Delta R.T.: -0.031 min
 Response: 5301478
 Conc: 258.50 ng/ml

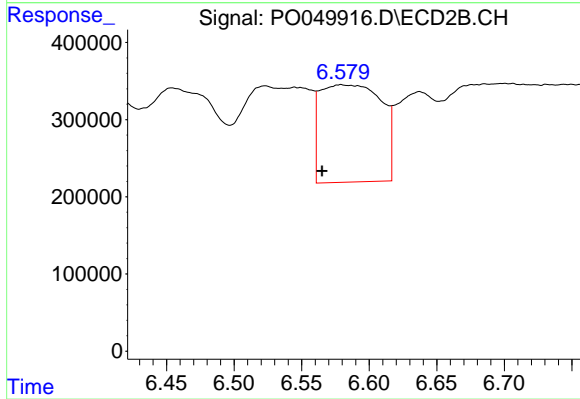
Instrument :
 ECD_O
 ClientSampled :



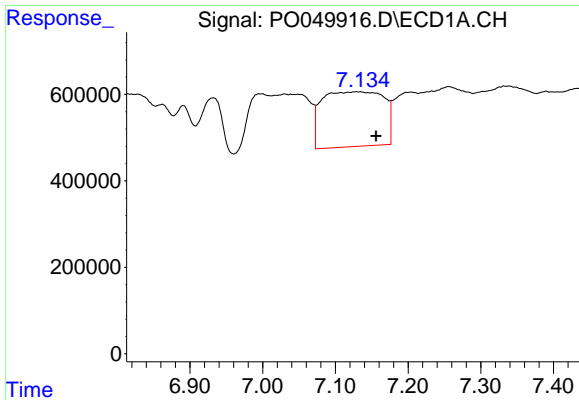
#29 AR-1254-4
 R.T.: 6.152 min
 Delta R.T.: 0.001 min
 Response: 7699219
 Conc: 383.69 ng/ml



#30 AR-1254-5
 R.T.: 0.000 min
 Exp R.T. : 7.705 min
 Response: 0
 Conc: N.D.



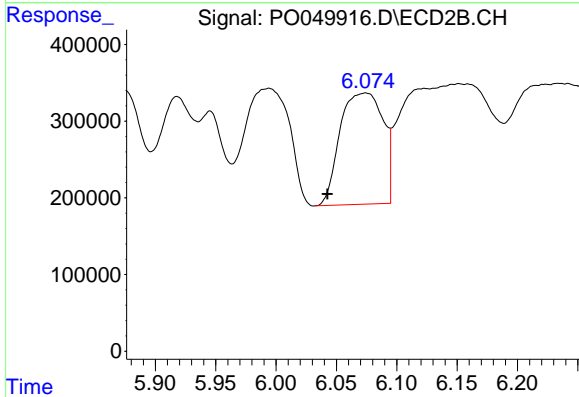
#30 AR-1254-5
 R.T.: 6.580 min
 Delta R.T.: 0.014 min
 Response: 3976945
 Conc: 148.63 ng/ml



#31 AR-1260-1

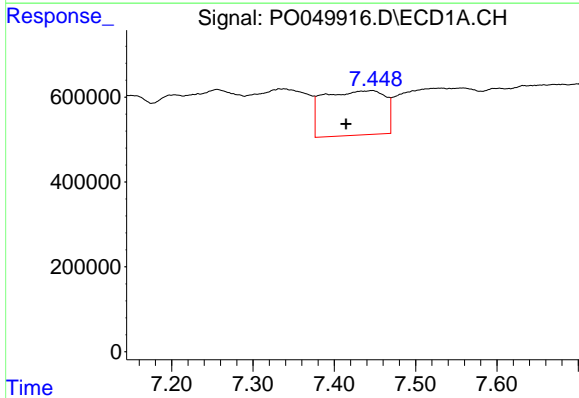
R.T.: 7.131 min
 Delta R.T.: -0.026 min
 Response: 7486005
 Conc: 405.73 ng/ml

Instrument :
 ECD_O
 ClientSampled :



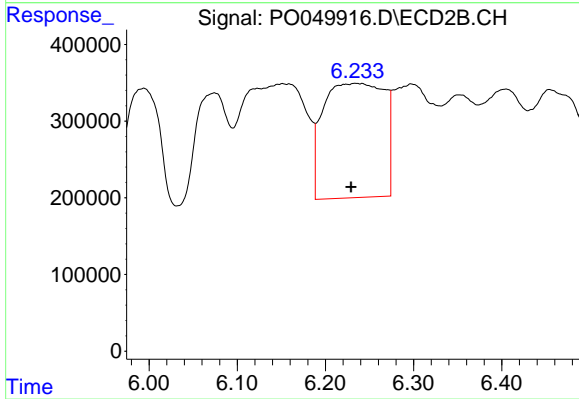
#31 AR-1260-1

R.T.: 6.074 min
 Delta R.T.: 0.031 min
 Response: 3597404
 Conc: 174.22 ng/ml



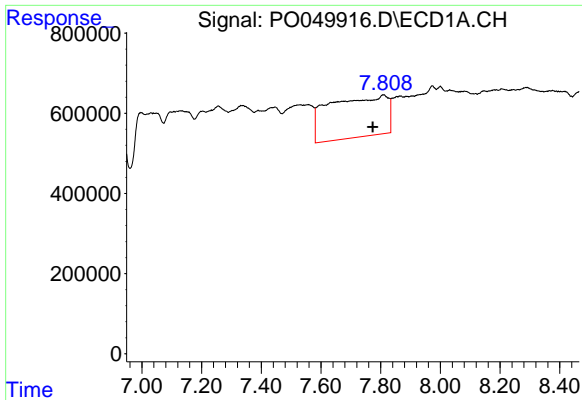
#32 AR-1260-2

R.T.: 7.446 min
 Delta R.T.: 0.031 min
 Response: 5494277
 Conc: 229.11 ng/ml



#32 AR-1260-2

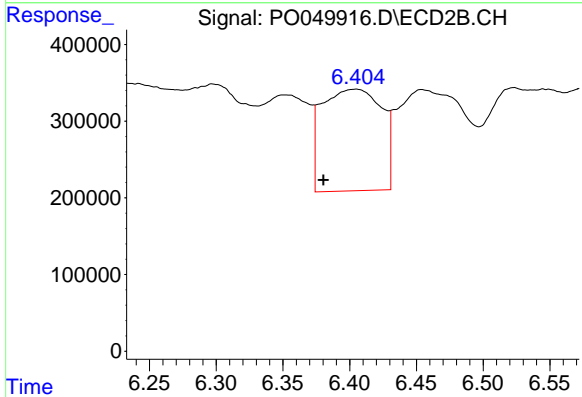
R.T.: 6.235 min
 Delta R.T.: 0.006 min
 Response: 7153808
 Conc: 255.14 ng/ml



#33 AR-1260-3

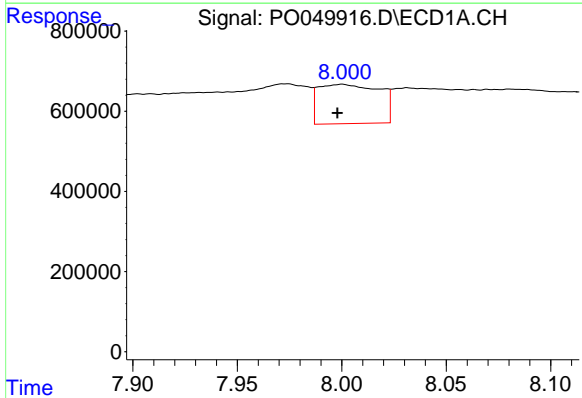
R.T.: 7.809 min
 Delta R.T.: 0.036 min
 Response: 13883184
 Conc: 734.31 ng/ml

Instrument :
 ECD_O
 ClientSampleId :



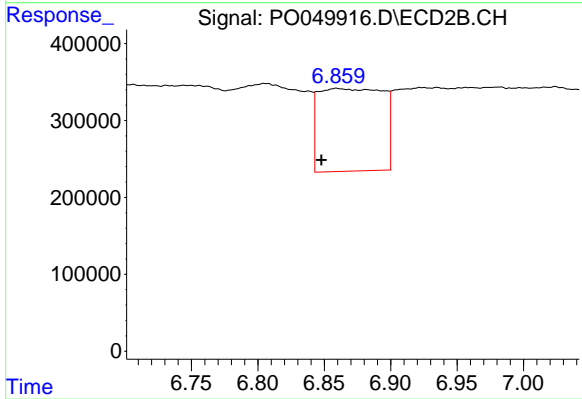
#33 AR-1260-3

R.T.: 6.404 min
 Delta R.T.: 0.024 min
 Response: 4116200
 Conc: 168.91 ng/ml



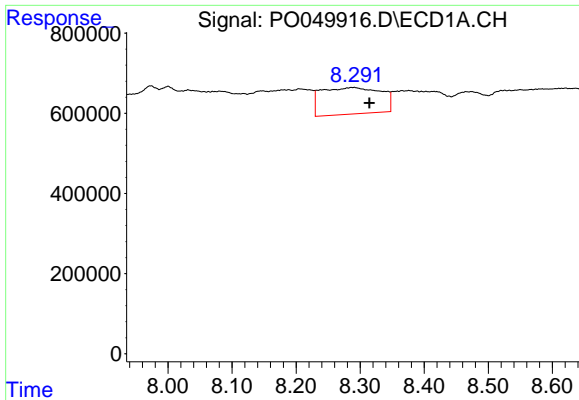
#34 AR-1260-4

R.T.: 8.000 min
 Delta R.T.: 0.002 min
 Response: 1993019
 Conc: 104.96 ng/ml



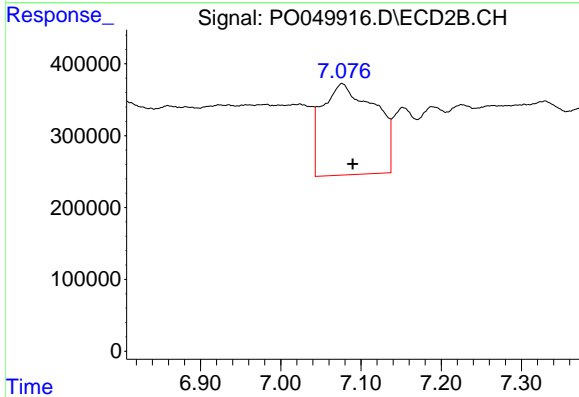
#34 AR-1260-4

R.T.: 6.860 min
 Delta R.T.: 0.012 min
 Response: 3602914
 Conc: 186.55 ng/ml

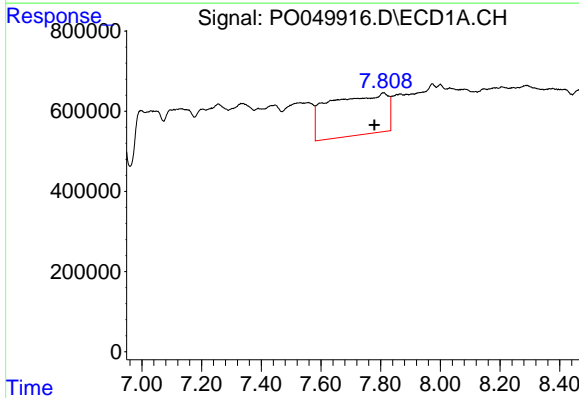


#35 AR-1260-5
 R.T.: 8.289 min
 Delta R.T.: -0.025 min
 Response: 4286406
 Conc: 101.32 ng/ml

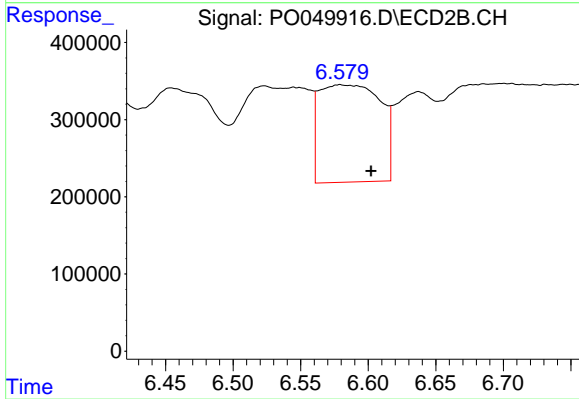
Instrument :
 ECD_O
 ClientSampleId :



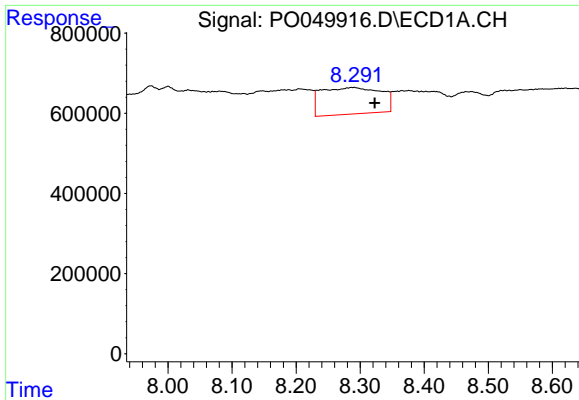
#35 AR-1260-5
 R.T.: 7.077 min
 Delta R.T.: -0.013 min
 Response: 5814189
 Conc: 113.40 ng/ml



#36 AR-1262-1
 R.T.: 7.809 min
 Delta R.T.: 0.030 min
 Response: 13883184
 Conc: 657.66 ng/ml



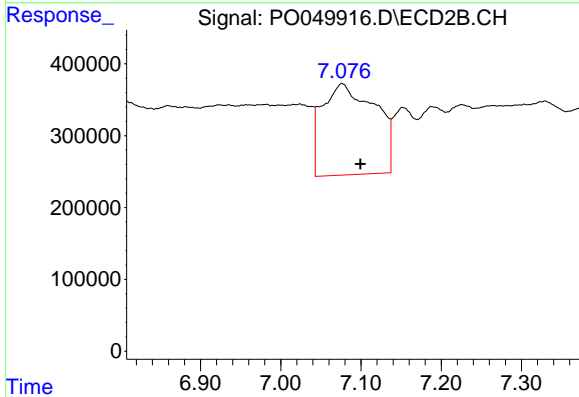
#36 AR-1262-1
 R.T.: 6.580 min
 Delta R.T.: -0.023 min
 Response: 3976945
 Conc: 162.13 ng/ml



#37 AR-1262-2

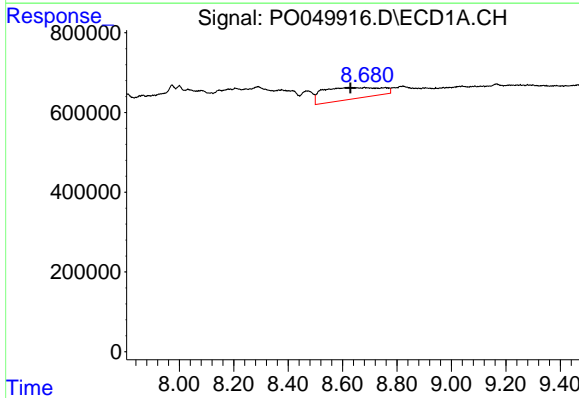
R.T.: 8.289 min
 Delta R.T.: -0.034 min
 Response: 4286406
 Conc: 115.05 ng/ml

Instrument :
 ECD_O
 ClientSampleId :



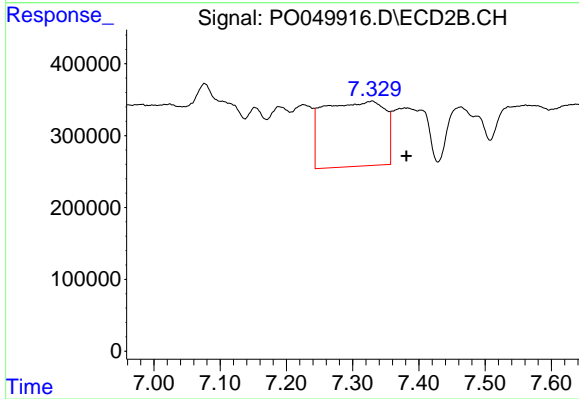
#37 AR-1262-2

R.T.: 7.077 min
 Delta R.T.: -0.023 min
 Response: 5814189
 Conc: 137.39 ng/ml



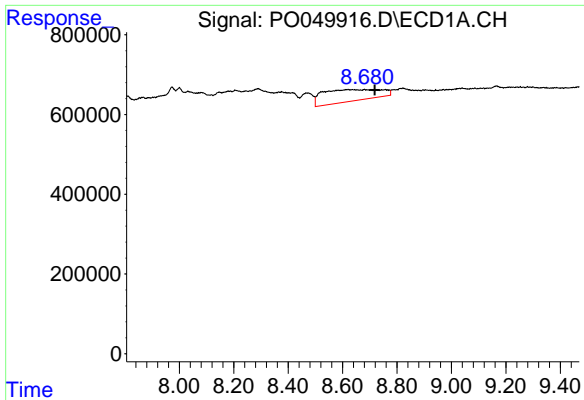
#38 AR-1262-3

R.T.: 8.680 min
 Delta R.T.: 0.052 min
 Response: 4310669
 Conc: 178.70 ng/ml



#38 AR-1262-3

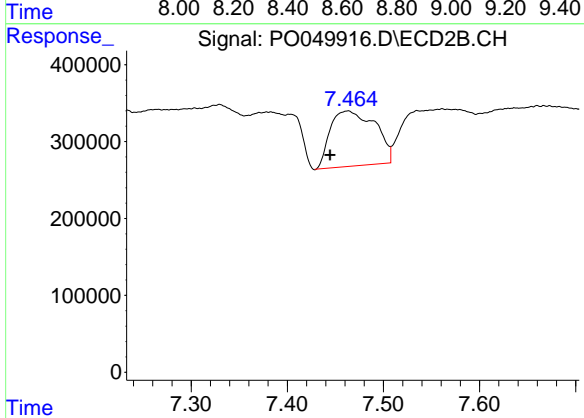
R.T.: 7.329 min
 Delta R.T.: -0.052 min
 Response: 5810397
 Conc: 345.23 ng/ml



#39 AR-1262-4

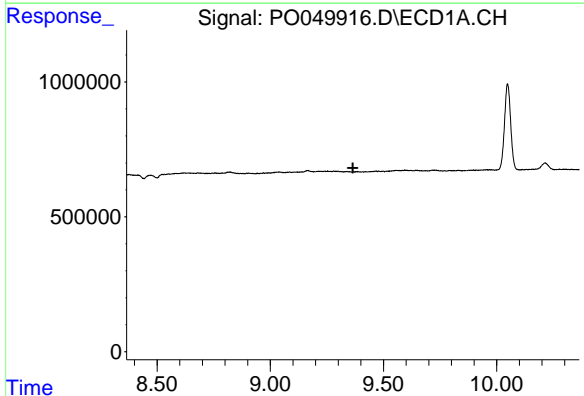
R.T.: 8.680 min
 Delta R.T.: -0.038 min
 Response: 4310669
 Conc: 227.29 ng/ml

Instrument :
 ECD_O
 ClientSampleId :



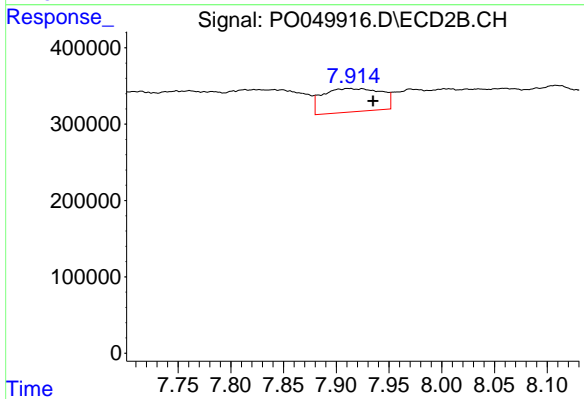
#39 AR-1262-4

R.T.: 7.462 min
 Delta R.T.: 0.018 min
 Response: 2336343
 Conc: 79.28 ng/ml



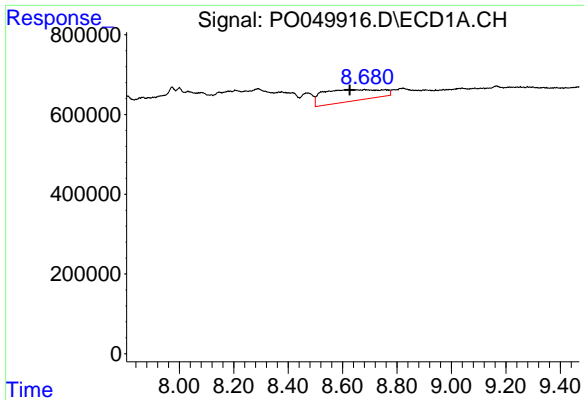
#40 AR-1262-5

R.T.: 0.000 min
 Exp R.T. : 9.365 min
 Response: 0
 Conc: N.D.



#40 AR-1262-5

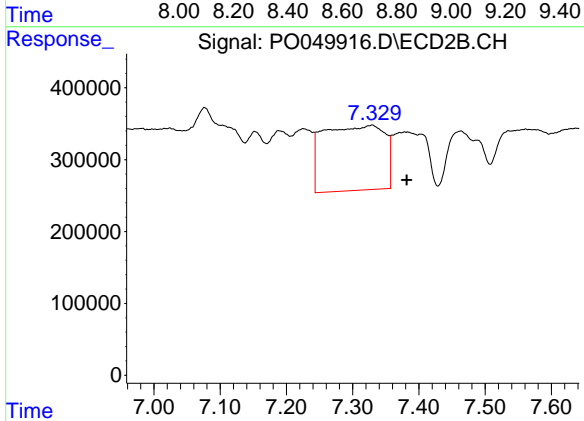
R.T.: 7.912 min
 Delta R.T.: -0.023 min
 Response: 1178991
 Conc: 88.45 ng/ml



#41 AR-1268-1

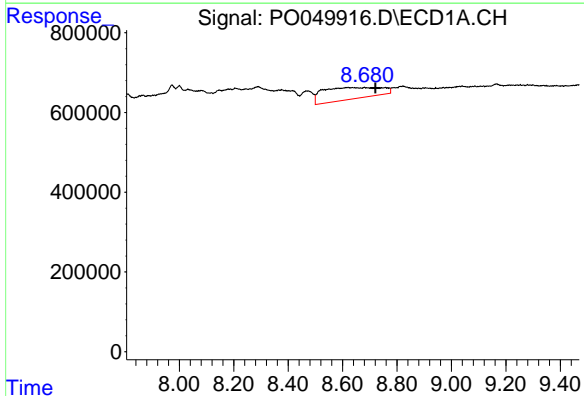
R.T.: 8.680 min
 Delta R.T.: 0.054 min
 Response: 4310669
 Conc: 86.22 ng/ml

Instrument :
 ECD_O
 ClientSampleId :



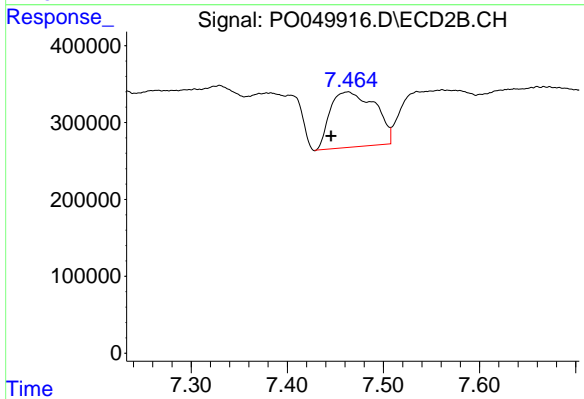
#41 AR-1268-1

R.T.: 7.329 min
 Delta R.T.: -0.053 min
 Response: 5810397
 Conc: 108.62 ng/ml



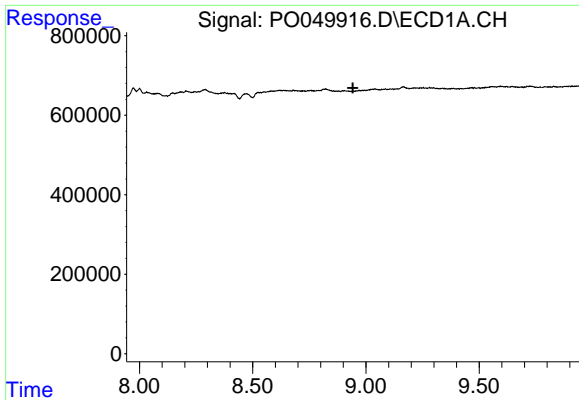
#42 AR-1268-2

R.T.: 8.680 min
 Delta R.T.: -0.040 min
 Response: 4310669
 Conc: 95.04 ng/ml



#42 AR-1268-2

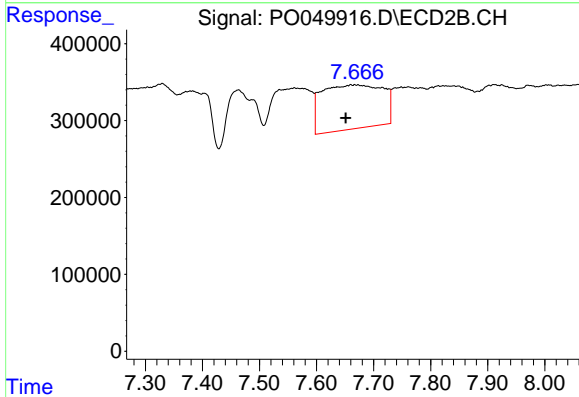
R.T.: 7.462 min
 Delta R.T.: 0.017 min
 Response: 2336343
 Conc: 48.17 ng/ml



#43 AR-1268-3

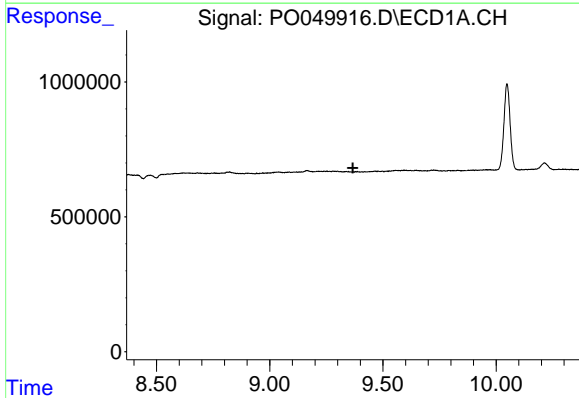
R.T.: 0.000 min
 Exp R.T. : 8.943 min
 Response: 0
 Conc: N.D.

Instrument :
 ECD_O
 ClientSampled :



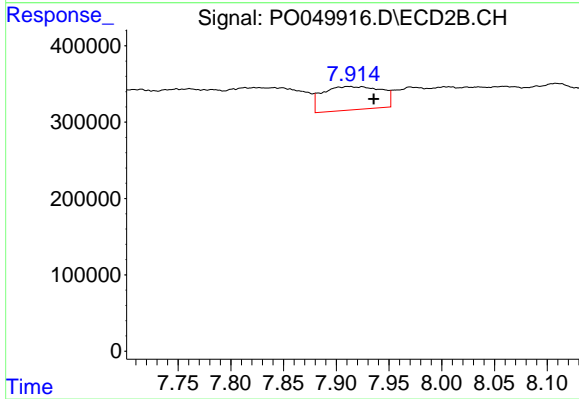
#43 AR-1268-3

R.T.: 7.669 min
 Delta R.T.: 0.017 min
 Response: 4270835
 Conc: 106.01 ng/ml



#44 AR-1268-4

R.T.: 0.000 min
 Exp R.T. : 9.368 min
 Response: 0
 Conc: N.D.



#44 AR-1268-4

R.T.: 7.912 min
 Delta R.T.: -0.023 min
 Response: 1178991
 Conc: 70.80 ng/ml