

Data Path : Z:\pestpcbsrv\HPCHEM1\ECD_0\Data\PO101118\
 Data File : PO049896.D
 Signal(s) : Signal #1: ECD1A.CH Signal #2: ECD2B.CH
 Acq On : 11 Oct 2018 9:28
 Operator : SM/SJ
 Sample : J5331-01
 Misc :
 ALS Vial : 7 Sample Multiplier: 1

Instrument :
 ECD_0
 ClientSampleId :
 NM-OIL

Integration File signal 1: autoint1.e
 Integration File signal 2: autoint2.e
 Quant Time: Oct 11 09:49:42 2018
 Quant Method : Z:\pestpcbsrv\HPCHEM1\ECD_0\methods\PO100818.M
 Quant Title : GC EXTRACTABLES
 QLast Update : Mon Oct 08 15:27:38 2018
 Response via : Initial Calibration
 Integrator: ChemStation 6890 Scale Mode: Small noise peaks clipped

Volume Inj. : 2 µl
 Signal #1 Phase : ZB-MR1 Signal #2 Phase: ZB-MR2
 Signal #1 Info : 30Mx0.32mmx 0.50µ Signal #2 Info : 30M x 0.32mm x 0.25µm

| Compound | RT#1 | RT#2 | Resp#1 | Resp#2 | ng/ml | ng/ml |
|-----------------------------|--------|-------|---------|---------|---------|----------|
| ----- | | | | | | |
| System Monitoring Compounds | | | | | | |
| 1) SA Tetrachlo... | 4.374 | 3.511 | 4647450 | 5188862 | 20.559 | 21.514 |
| 2) SA Decachlor... | 10.046 | 8.403 | 6888874 | 3666921 | 20.675m | 14.019m# |

Target Compounds

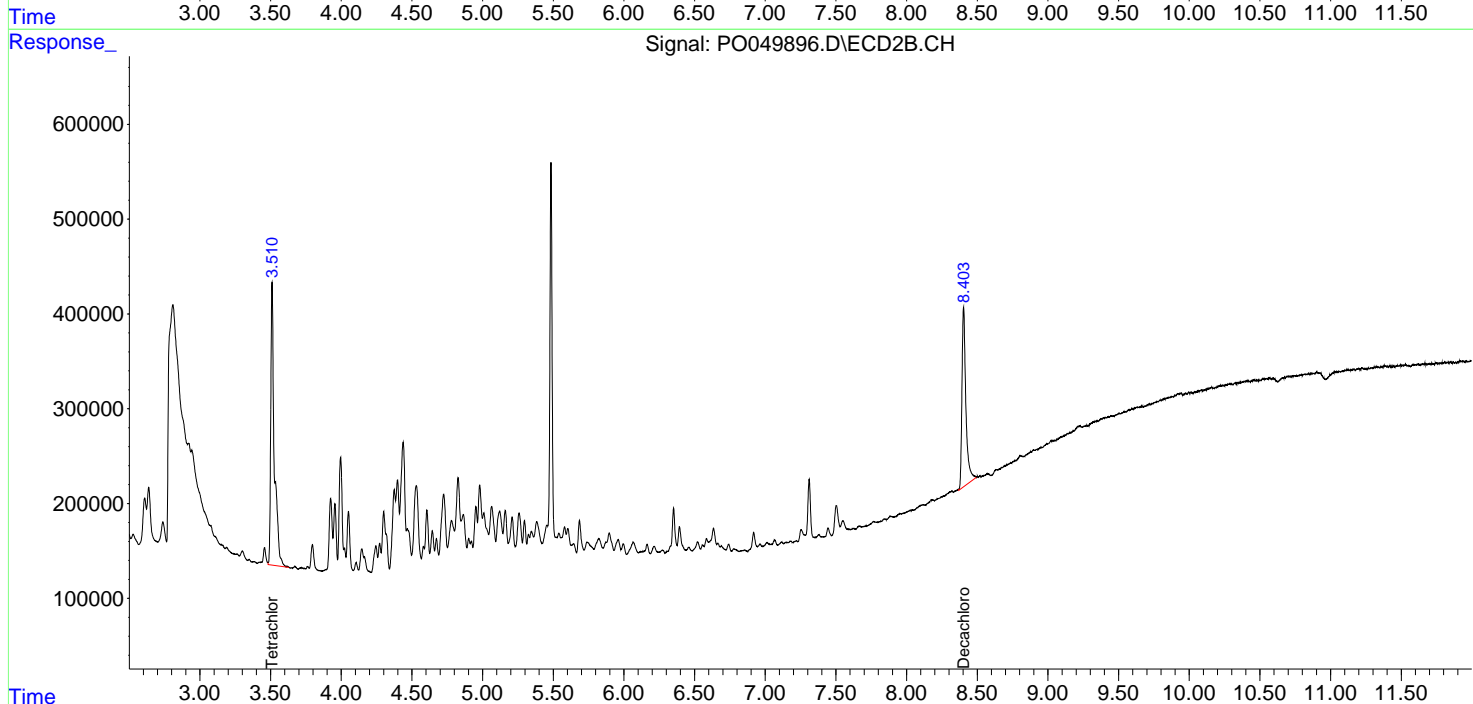
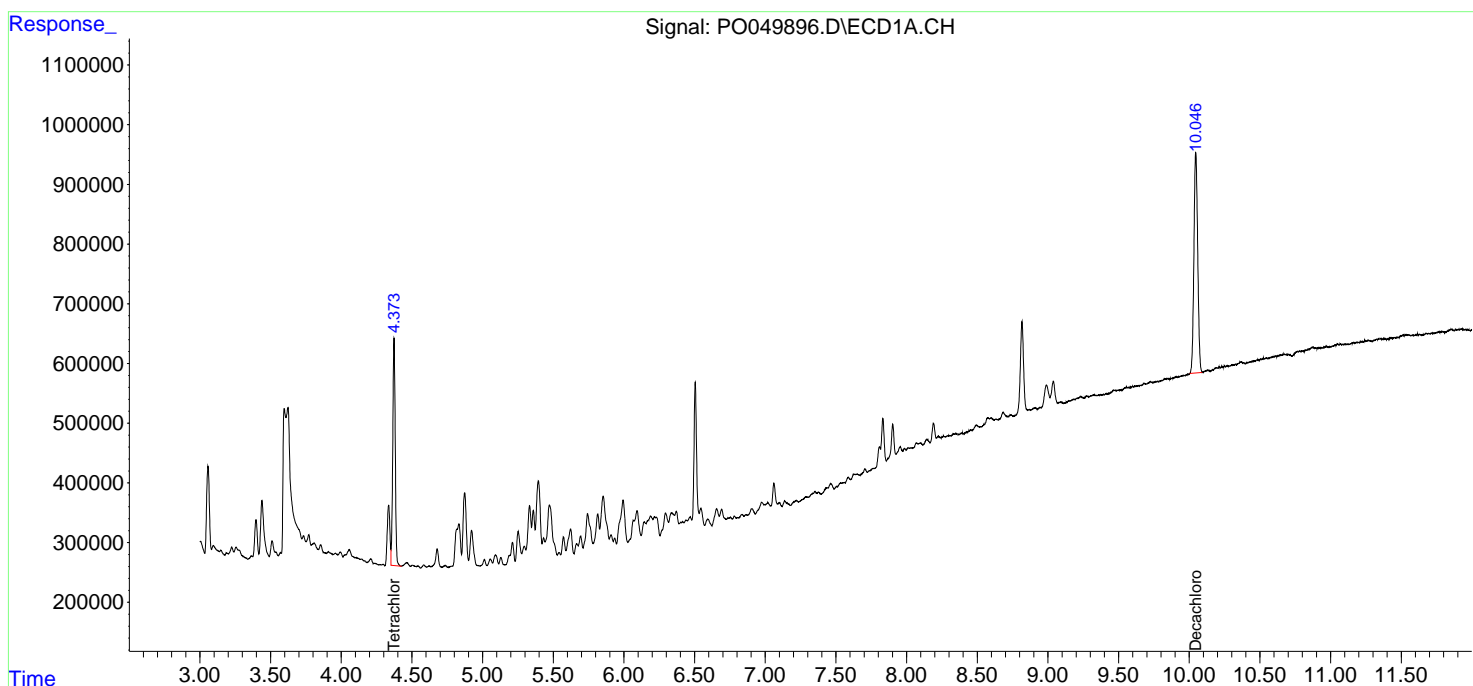
(f)=RT Delta > 1/2 Window (#)=Amounts differ by > 25% (m)=manual int.

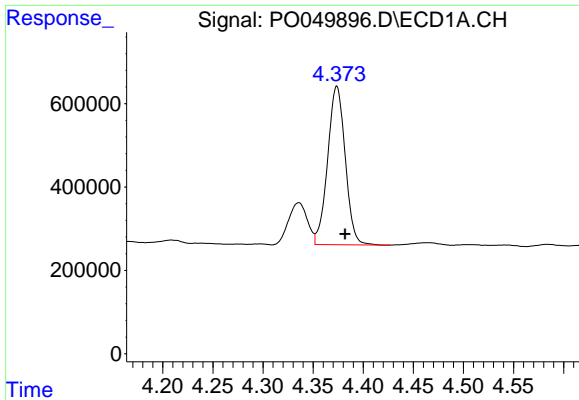
Data Path : Z:\pestpcbsrv\HPCHEM1\ECD_O\Data\PO101118\
 Data File : PO049896.D
 Signal(s) : Signal #1: ECD1A.CH Signal #2: ECD2B.CH
 Acq On : 11 Oct 2018 9:28
 Operator : SM/SJ
 Sample : J5331-01
 Misc :
 ALS Vial : 7 Sample Multiplier: 1

Instrument :
 ECD_O
 ClientSampled :
 NM-OIL

Integration File signal 1: autoint1.e
 Integration File signal 2: autoint2.e
 Quant Time: Oct 11 09:49:42 2018
 Quant Method : Z:\pestpcbsrv\HPCHEM1\ECD_O\methods\PO100818.M
 Quant Title : GC EXTRACTABLES
 QLast Update : Mon Oct 08 15:27:38 2018
 Response via : Initial Calibration
 Integrator: ChemStation 6890 Scale Mode: Small noise peaks clipped

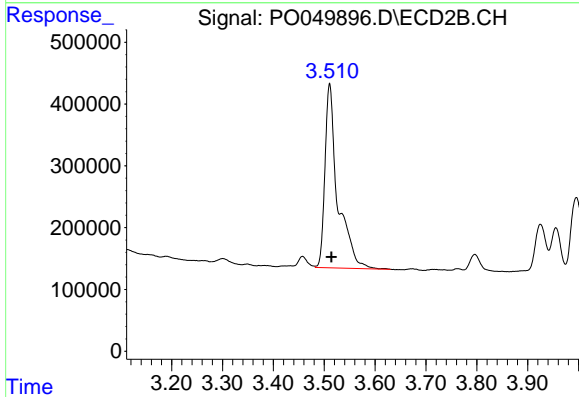
Volume Inj. : 2 µl
 Signal #1 Phase : ZB-MR1 Signal #2 Phase: ZB-MR2
 Signal #1 Info : 30Mx0.32mmx 0.50µ Signal #2 Info : 30M x 0.32mm x 0.25µm



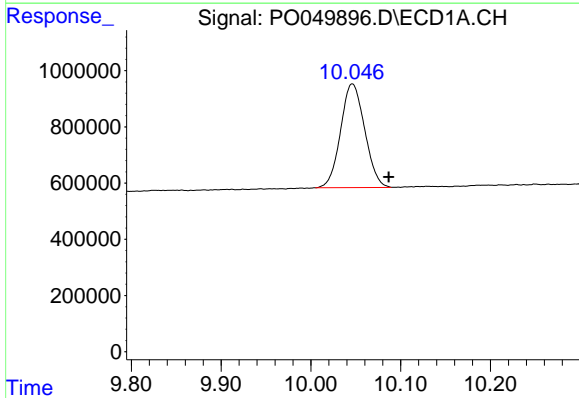


#1 Tetrachloro-m-xylene
 R.T.: 4.374 min
 Delta R.T.: -0.008 min
 Response: 4647450
 Conc: 20.56 ng/ml

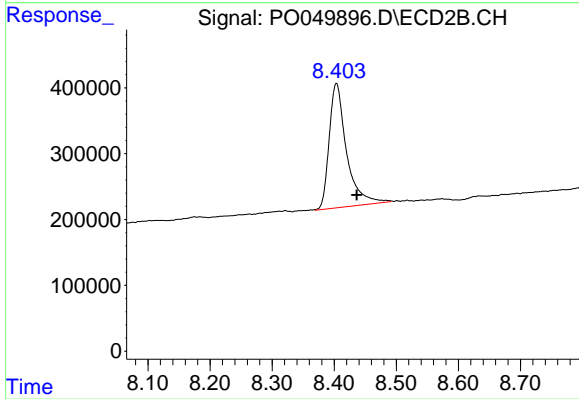
Instrument :
 ECD_O
 ClientSampled :
 NM-OIL



#1 Tetrachloro-m-xylene
 R.T.: 3.511 min
 Delta R.T.: -0.003 min
 Response: 5188862
 Conc: 21.51 ng/ml



#2 Decachlorobiphenyl
 R.T.: 10.046 min
 Delta R.T.: -0.041 min
 Response: 6888874
 Conc: 20.68 ng/ml m



#2 Decachlorobiphenyl
 R.T.: 8.403 min
 Delta R.T.: -0.033 min
 Response: 3666921
 Conc: 14.02 ng/ml m