

Data Path : Z:\pestpcbsrv\HPCHEM1\ECD\_0\Data\PO101118\  
 Data File : PO049921.D  
 Signal(s) : Signal #1: ECD1A.CH Signal #2: ECD2B.CH  
 Acq On : 11 Oct 2018 17:26  
 Operator : SM/SJ  
 Sample : J5373-08  
 Misc :  
 ALS Vial : 14 Sample Multiplier: 1

Instrument :  
 ECD\_0  
 ClientSampleId :  
 SV253553LC

Integration File signal 1: autoint1.e  
 Integration File signal 2: autoint2.e  
 Quant Time: Oct 11 18:17:57 2018  
 Quant Method : Z:\pestpcbsrv\HPCHEM1\ECD\_0\methods\PO100818.M  
 Quant Title : GC EXTRACTABLES  
 QLast Update : Mon Oct 08 15:27:38 2018  
 Response via : Initial Calibration  
 Integrator: ChemStation 6890 Scale Mode: Small noise peaks clipped

Volume Inj. : 2 µl  
 Signal #1 Phase : ZB-MR1 Signal #2 Phase: ZB-MR2  
 Signal #1 Info : 30Mx0.32mmx 0.50µ Signal #2 Info : 30M x 0.32mm x 0.25µm

Compound	RT#1	RT#2	Resp#1	Resp#2	ng/ml	ng/ml
-----						
System Monitoring Compounds						
1) SA Tetrachlo...	4.379	3.519	11720871	30049268	51.850	124.588 #
2) SA Decachlor...	10.088	8.451	300.4E6	13036308	901.548	49.840 #
Target Compounds						
3) L1 AR-1016-1	5.531	4.582	310.6E6	511.8E6	27481.048	42194.314 #
4) L1 AR-1016-2	5.582	4.582	20460937	511.8E6	1298.932	31505.202 #
5) L1 AR-1016-3	5.657	4.759	193.4E6	922.4E6	19342.785	95557.898 #
6) L1 AR-1016-4	5.696	4.803	183.3E6	365.2E6	21819.397	51276.661 #
7) L1 AR-1016-5	6.033	5.039	1727786	673.8E6	198.611	69414.192 #
8) L2 AR-1221-1	4.575	3.754	34608759	207.5E6	15046.567	78114.422 #
9) L2 AR-1221-2	4.675	3.754	322.7E6	207.5E6	177006.797	103476.147 #
10) L2 AR-1221-3	4.777	0.000	51573626	0	8717.500	N.D. #
11) L3 AR-1232-1	4.777	0.000	51573626	0	10986.784	N.D. #
12) L3 AR-1232-2	5.267	4.616	385.2E6	893.1E6	157772.814	153507.954
13) L3 AR-1232-3	5.582	4.784	20460937	448.8E6	3898.766	136221.346 #
14) L3 AR-1232-4	5.696	4.834	183.3E6	1707.5E6	66149.649	621921.618 #
15) L3 AR-1232-5	5.838	5.039	2929728	673.8E6	1510.011	215615.313 #
16) L4 AR-1242-1	5.582	4.582	20460937	511.8E6	2576.678	61720.855 #
17) L4 AR-1242-2	5.582	4.616	20460937	893.1E6	1866.612	77523.643 #
18) L4 AR-1242-3	5.657	4.784	193.4E6	448.8E6	27856.153	69850.159 #
19) L4 AR-1242-4	5.696	4.834	183.3E6	1707.5E6	30835.457	285190.674 #
20) L4 AR-1242-5	6.484	5.435	166.0E6	394.4E6	23072.547	49145.706 #
21) L5 AR-1248-1	5.582	4.582	20460937	511.8E6	3404.445	77134.472 #
22) L5 AR-1248-2	5.838	4.834	2929728	1707.5E6	352.011	200706.817 #
23) L5 AR-1248-3	6.033	4.834	1727786	1707.5E6	178.697	194541.218 #
24) L5 AR-1248-4	6.446	5.039	197.5E6	673.8E6	15962.596	61995.487 #
25) L5 AR-1248-5	6.484	5.435	166.0E6	394.4E6	14143.933	34745.438 #
26) L6 AR-1254-1	6.415	5.435	391.4E6	394.4E6	28462.193	20121.187 #
27) L6 AR-1254-2	6.618	5.508	249.9E6	25120919	11317.062	1500.887 #
28) L6 AR-1254-3	7.027	5.945	1026.7E6	747.4E6	42078.851	26775.443 #
29) L6 AR-1254-4	7.290	6.154	4845758	225.0E6	236.276	11212.504 #
30) L6 AR-1254-5	7.683	6.559	420.1E6	124.1E6	21799.033	4639.050 #
31) L7 AR-1260-1	7.154	6.022	293.0E6	329.2E6	15878.542	15944.276
32) L7 AR-1260-2	7.453	6.189	187.2E6	262.3E6	7808.327	9356.202
33) L7 AR-1260-3	7.768	6.379	88174138	1053624	4663.701	43.236 #
34) L7 AR-1260-4	8.056	6.908	2211.2E6	5658.7E6	116453.588	292998.472 #
35) L7 AR-1260-5	8.329	7.081	229.8E6	195.9E6	5432.304	3820.364 #
36) L8 AR-1262-1	7.783	6.559	198.6E6	124.1E6	9406.894	5060.343 #
37) L8 AR-1262-2	8.329	7.117	229.8E6	216.1E6	6168.332	5106.098
38) L8 AR-1262-3	8.626	7.411	37519500	322.2E6	1555.393	19142.055 #
39) L8 AR-1262-4	8.713	7.411	1478861	322.2E6	77.975	10933.028 #
40) L8 AR-1262-5	9.357	7.926	248.7E6	141.8E6	18204.717	10638.480 #
41) L9 AR-1268-1	8.626	7.411	37519500	322.2E6	750.436	6022.842 #

Data Path : Z:\pestpcbsrv\HPCHEM1\ECD\_0\Data\PO101118\  
 Data File : PO049921.D  
 Signal(s) : Signal #1: ECD1A.CH Signal #2: ECD2B.CH  
 Acq On : 11 Oct 2018 17:26  
 Operator : SM/SJ  
 Sample : J5373-08  
 Misc :  
 ALS Vial : 14 Sample Multiplier: 1

Instrument :  
 ECD\_0  
 ClientSampleId :  
 SV253553LC

Integration File signal 1: autoint1.e  
 Integration File signal 2: autoint2.e  
 Quant Time: Oct 11 18:17:57 2018  
 Quant Method : Z:\pestpcbsrv\HPCHEM1\ECD\_0\methods\PO100818.M  
 Quant Title : GC EXTRACTABLES  
 QLast Update : Mon Oct 08 15:27:38 2018  
 Response via : Initial Calibration  
 Integrator: ChemStation 6890 Scale Mode: Small noise peaks clipped

Volume Inj. : 2 µl  
 Signal #1 Phase : ZB-MR1 Signal #2 Phase: ZB-MR2  
 Signal #1 Info : 30Mx0.32mmx 0.50µ Signal #2 Info : 30M x 0.32mm x 0.25µm

	Compound	RT#1	RT#2	Resp#1	Resp#2	ng/ml	ng/ml
42)	L9 AR-1268-2	8.713	7.411	1478861	322.2E6	32.606	6642.373 #
43)	L9 AR-1268-3	8.944	7.639	49795950	199.6E6	1247.817	4953.231 #
44)	L9 AR-1268-4	9.357	7.926	248.7E6	141.8E6	14592.328	8515.237 #
45)	L9 AR-1268-5	9.750	8.191	1198.5E6	14805126	9870.434	142.549 #

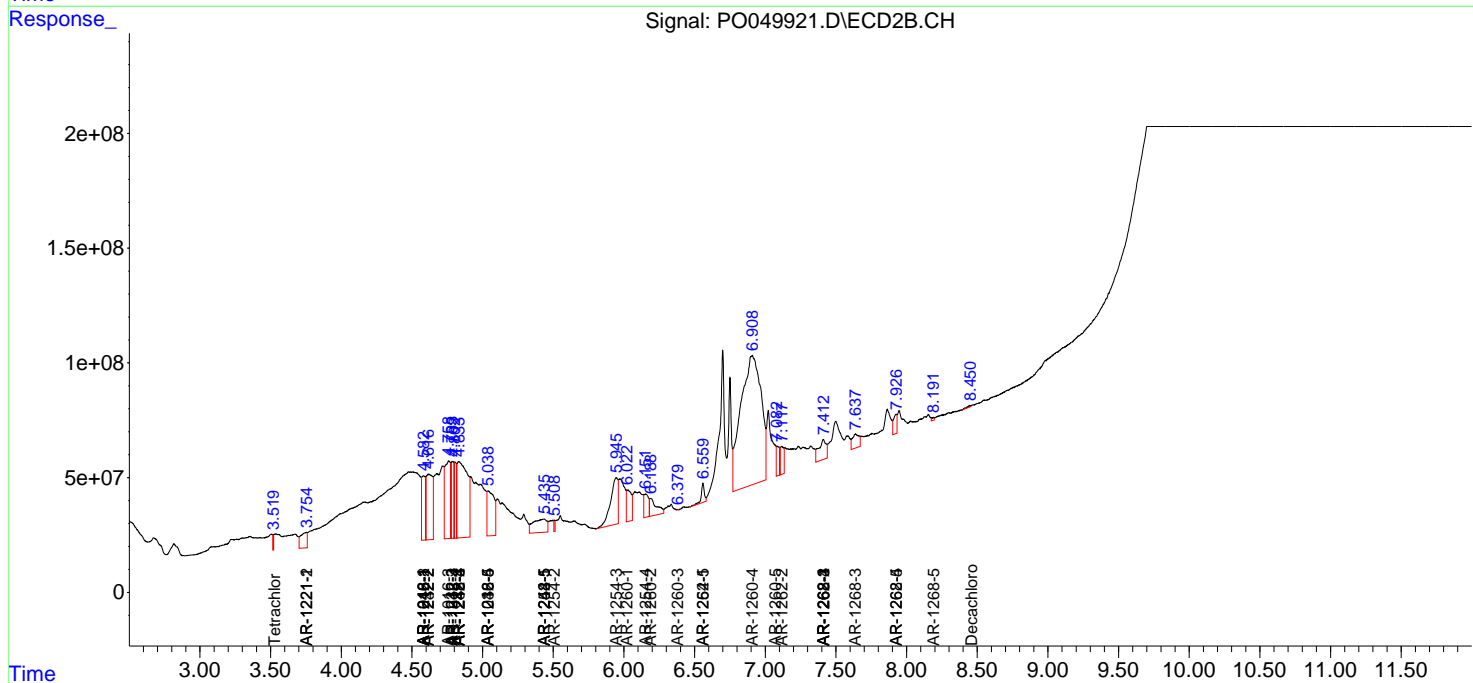
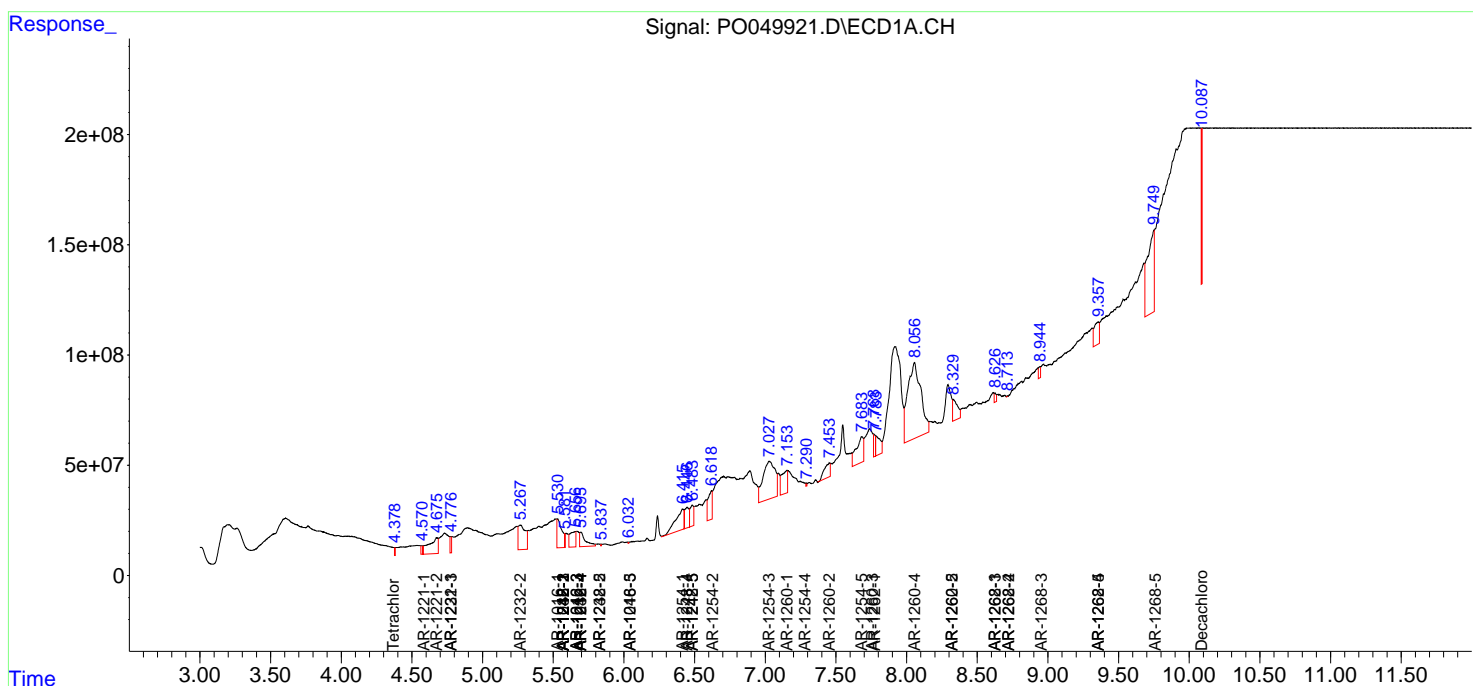
(f)=RT Delta > 1/2 Window (#)=Amounts differ by > 25% (m)=manual int.

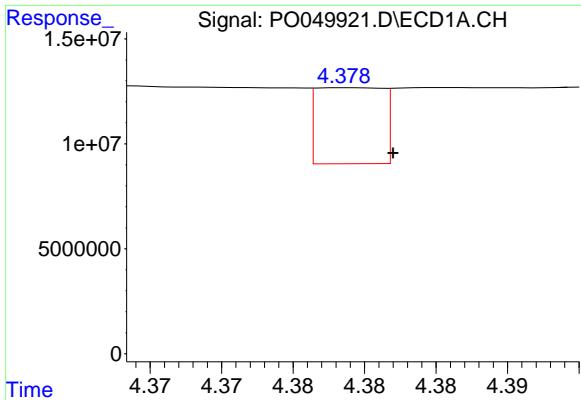
Data Path : Z:\pestpcbsrv\HPCHEM1\ECD\_O\Data\PO101118\  
 Data File : PO049921.D  
 Signal(s) : Signal #1: ECD1A.CH Signal #2: ECD2B.CH  
 Acq On : 11 Oct 2018 17:26  
 Operator : SM/SJ  
 Sample : J5373-08  
 Misc :  
 ALS Vial : 14 Sample Multiplier: 1

Instrument :  
 ECD\_O  
 ClientSampled :  
 SV253553LC

Integration File signal 1: autoint1.e  
 Integration File signal 2: autoint2.e  
 Quant Time: Oct 11 18:17:57 2018  
 Quant Method : Z:\pestpcbsrv\HPCHEM1\ECD\_O\methods\PO100818.M  
 Quant Title : GC EXTRACTABLES  
 QLast Update : Mon Oct 08 15:27:38 2018  
 Response via : Initial Calibration  
 Integrator: ChemStation 6890 Scale Mode: Small noise peaks clipped

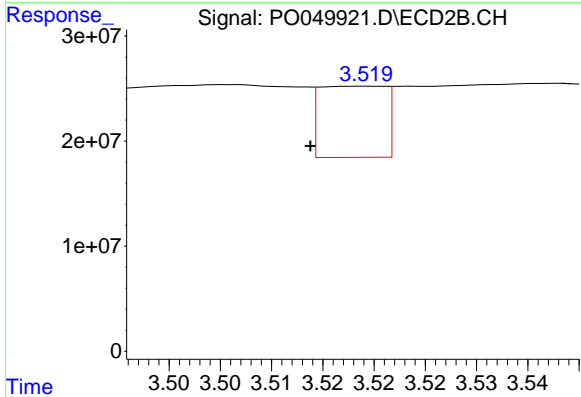
Volume Inj. : 2 µl  
 Signal #1 Phase : ZB-MR1 Signal #2 Phase: ZB-MR2  
 Signal #1 Info : 30Mx0.32mmx 0.50µ Signal #2 Info : 30M x 0.32mm x 0.25µm



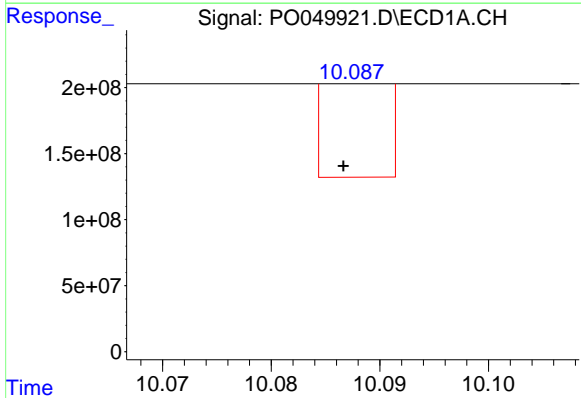


#1 Tetrachloro-m-xylene  
 R.T.: 4.379 min  
 Delta R.T.: -0.003 min  
 Response: 11720871  
 Conc: 51.85 ng/ml

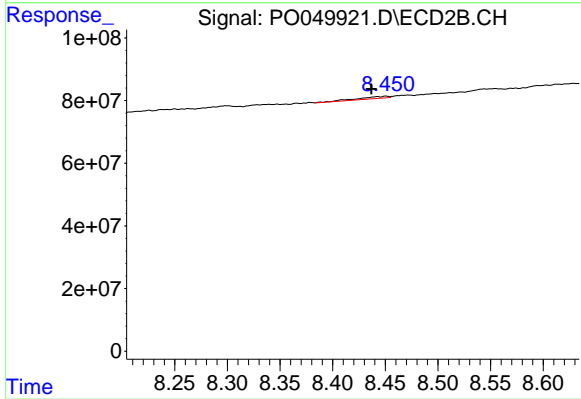
Instrument :  
 ECD\_O  
 ClientSampleId :  
 SV253553LC



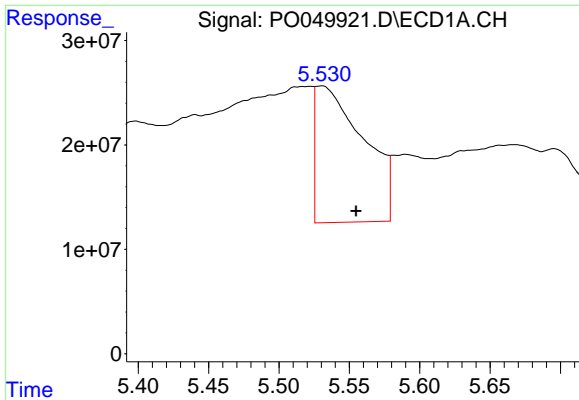
#1 Tetrachloro-m-xylene  
 R.T.: 3.519 min  
 Delta R.T.: 0.005 min  
 Response: 30049268  
 Conc: 124.59 ng/ml



#2 Decachlorobiphenyl  
 R.T.: 10.088 min  
 Delta R.T.: 0.001 min  
 Response: 300392858  
 Conc: 901.55 ng/ml

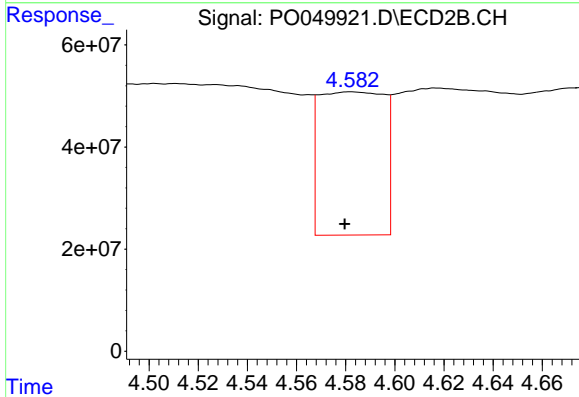


#2 Decachlorobiphenyl  
 R.T.: 8.451 min  
 Delta R.T.: 0.014 min  
 Response: 13036308  
 Conc: 49.84 ng/ml

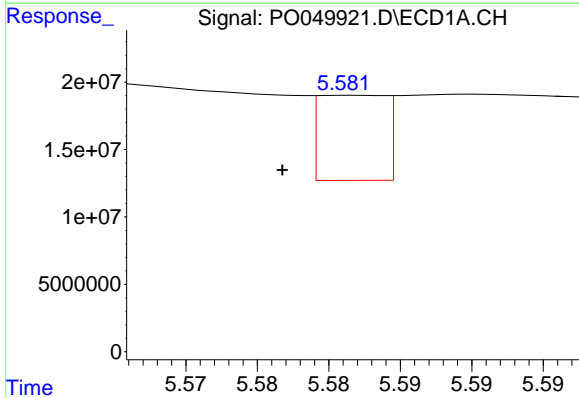


#3 AR-1016-1  
 R.T.: 5.531 min  
 Delta R.T.: -0.024 min  
 Response: 310635510  
 Conc: 27481.05 ng/ml

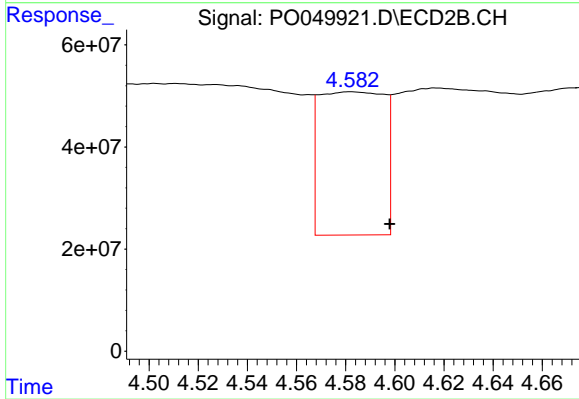
**Instrument :**  
 ECD\_O  
**ClientSampled :**  
 SV253553LC



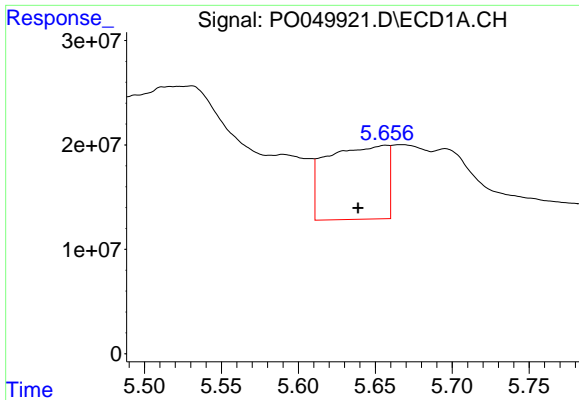
#3 AR-1016-1  
 R.T.: 4.582 min  
 Delta R.T.: 0.002 min  
 Response: 511815817  
 Conc: 42194.31 ng/ml



#4 AR-1016-2  
 R.T.: 5.582 min  
 Delta R.T.: 0.005 min  
 Response: 20460937  
 Conc: 1298.93 ng/ml



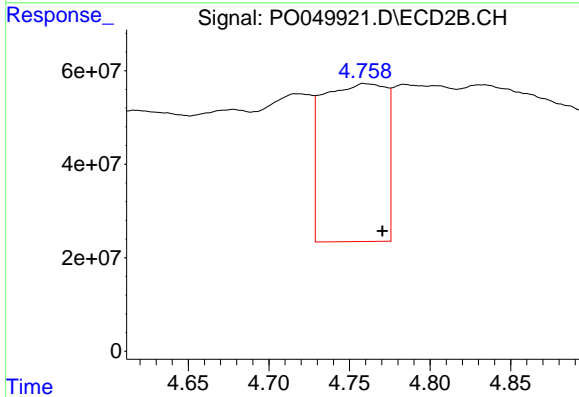
#4 AR-1016-2  
 R.T.: 4.582 min  
 Delta R.T.: -0.016 min  
 Response: 511815817  
 Conc: 31505.20 ng/ml



#5 AR-1016-3

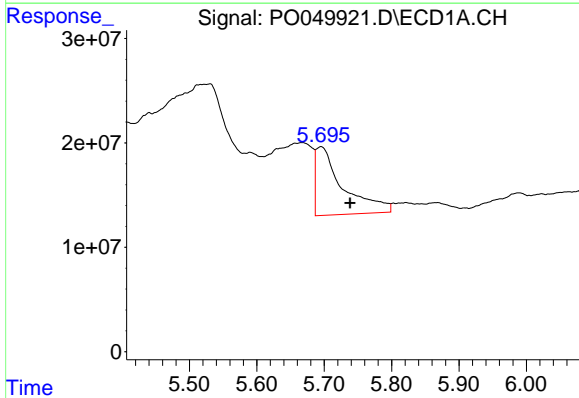
R.T.: 5.657 min  
 Delta R.T.: 0.018 min  
 Response: 193396418  
 Conc: 19342.79 ng/ml

Instrument :  
 ECD\_O  
 ClientSampleId :  
 SV253553LC



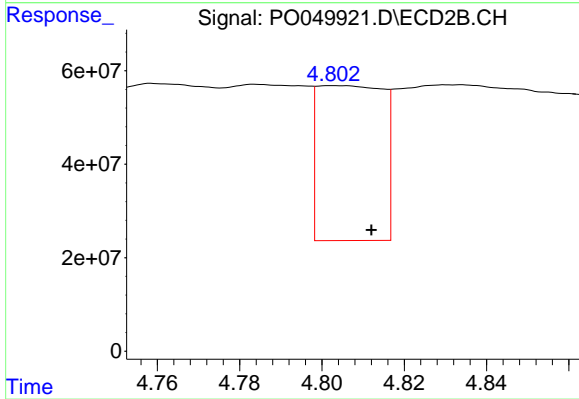
#5 AR-1016-3

R.T.: 4.759 min  
 Delta R.T.: -0.012 min  
 Response: 922354730  
 Conc: 95557.90 ng/ml



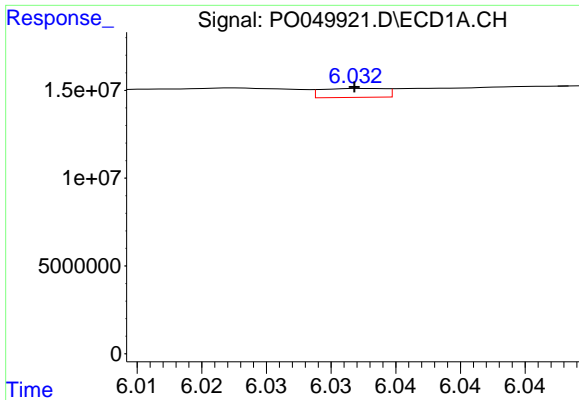
#6 AR-1016-4

R.T.: 5.696 min  
 Delta R.T.: -0.043 min  
 Response: 183299458  
 Conc: 21819.40 ng/ml



#6 AR-1016-4

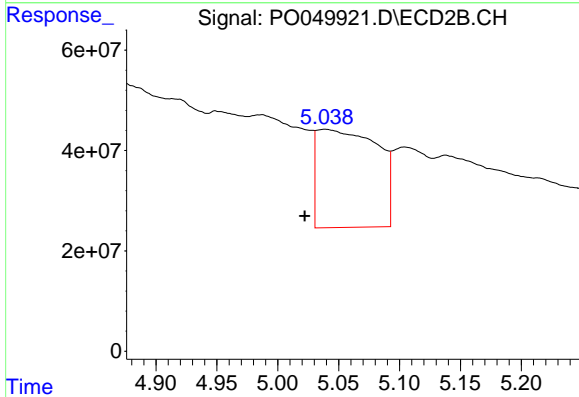
R.T.: 4.803 min  
 Delta R.T.: -0.009 min  
 Response: 365208317  
 Conc: 51276.66 ng/ml



#7 AR-1016-5

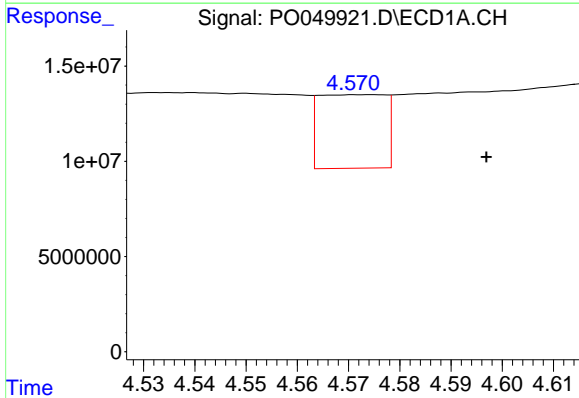
R.T.: 6.033 min  
 Delta R.T.: 0.000 min  
 Response: 1727786  
 Conc: 198.61 ng/ml

Instrument :  
 ECD\_O  
 ClientSampleId :  
 SV253553LC



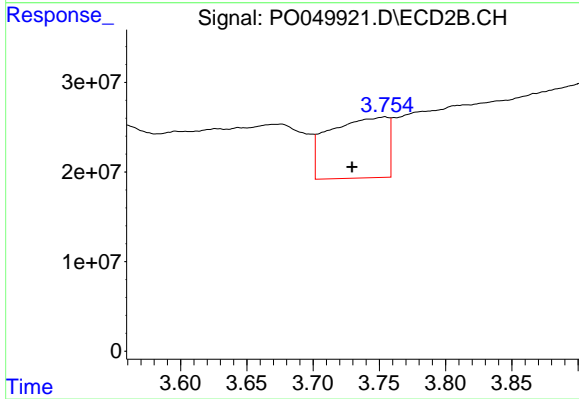
#7 AR-1016-5

R.T.: 5.039 min  
 Delta R.T.: 0.016 min  
 Response: 673756801  
 Conc: 69414.19 ng/ml



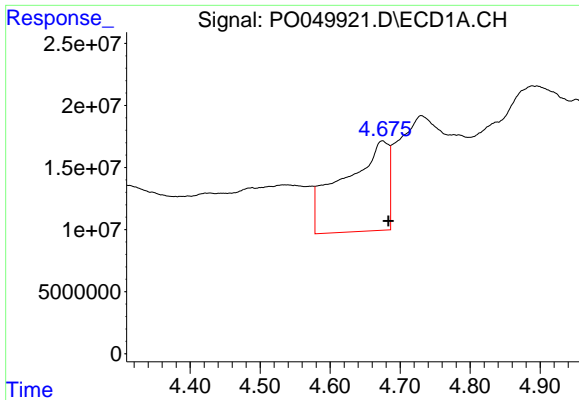
#8 AR-1221-1

R.T.: 4.575 min  
 Delta R.T.: -0.022 min  
 Response: 34608759  
 Conc: 15046.57 ng/ml



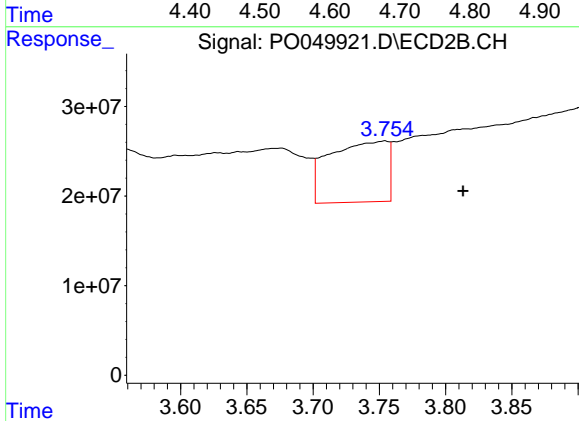
#8 AR-1221-1

R.T.: 3.754 min  
 Delta R.T.: 0.025 min  
 Response: 207524905  
 Conc: 78114.42 ng/ml

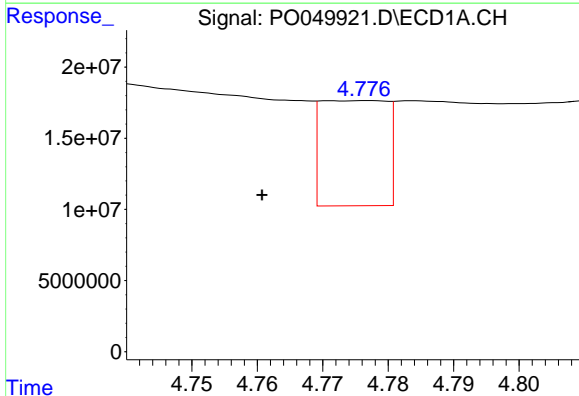


#9 AR-1221-2  
 R.T.: 4.675 min  
 Delta R.T.: -0.009 min  
 Response: 322737088  
 Conc: 177006.80 ng/ml

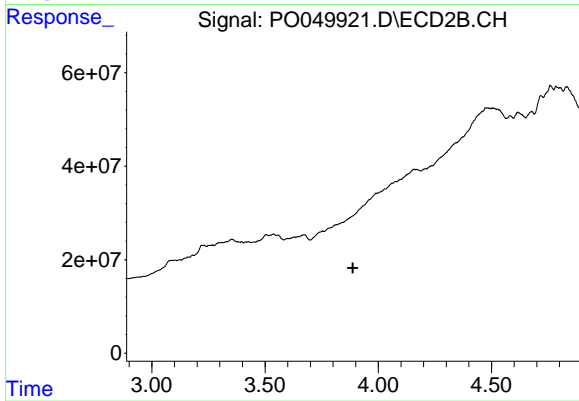
**Instrument :**  
 ECD\_O  
**ClientSampled :**  
 SV253553LC



#9 AR-1221-2  
 R.T.: 3.754 min  
 Delta R.T.: -0.059 min  
 Response: 207524905  
 Conc: 103476.15 ng/ml

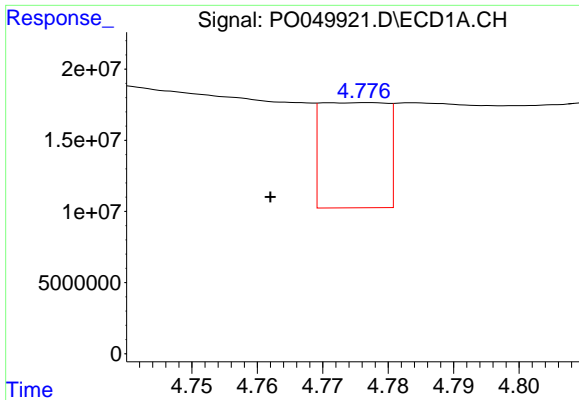


#10 AR-1221-3  
 R.T.: 4.777 min  
 Delta R.T.: 0.016 min  
 Response: 51573626  
 Conc: 8717.50 ng/ml



#10 AR-1221-3  
 R.T.: 0.000 min  
 Exp R.T. : 3.888 min  
 Response: 0  
 Conc: N.D.

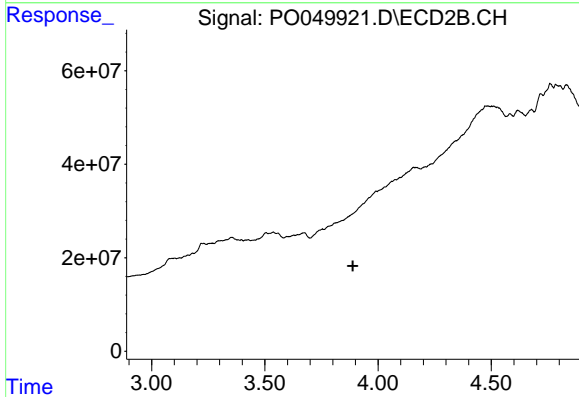




#11 AR-1232-1

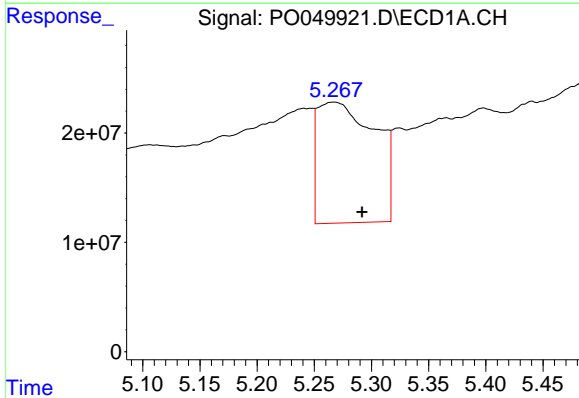
R.T.: 4.777 min  
 Delta R.T.: 0.015 min  
 Response: 51573626  
 Conc: 10986.78 ng/ml

Instrument :  
 ECD\_O  
 ClientSampled :  
 SV253553LC



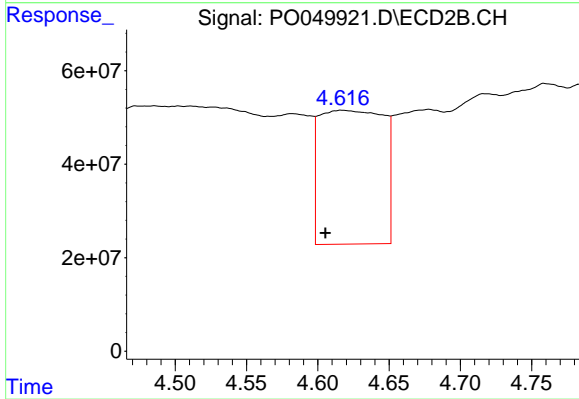
#11 AR-1232-1

R.T.: 0.000 min  
 Exp R.T. : 3.889 min  
 Response: 0  
 Conc: N.D.



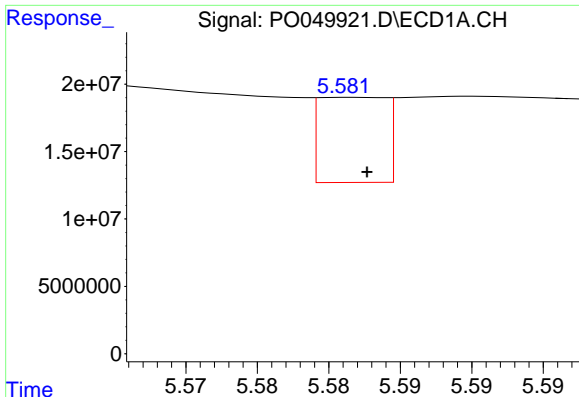
#12 AR-1232-2

R.T.: 5.267 min  
 Delta R.T.: -0.025 min  
 Response: 385239041  
 Conc: 157772.81 ng/ml



#12 AR-1232-2

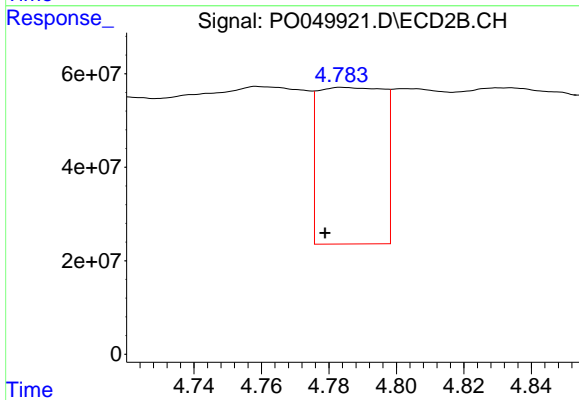
R.T.: 4.616 min  
 Delta R.T.: 0.011 min  
 Response: 893109557  
 Conc: 153507.95 ng/ml



#13 AR-1232-3

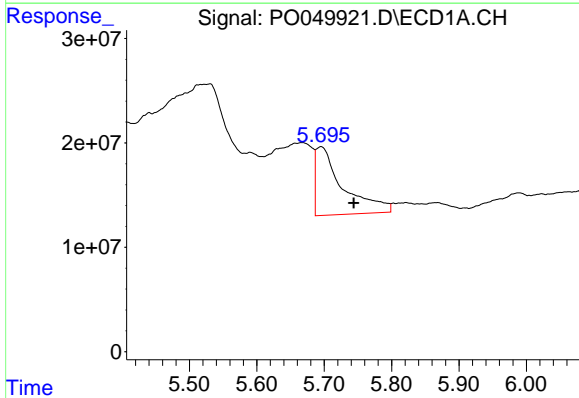
R.T.: 5.582 min  
 Delta R.T.: 0.000 min  
 Response: 20460937  
 Conc: 3898.77 ng/ml

Instrument :  
 ECD\_O  
 ClientSampleId :  
 SV253553LC



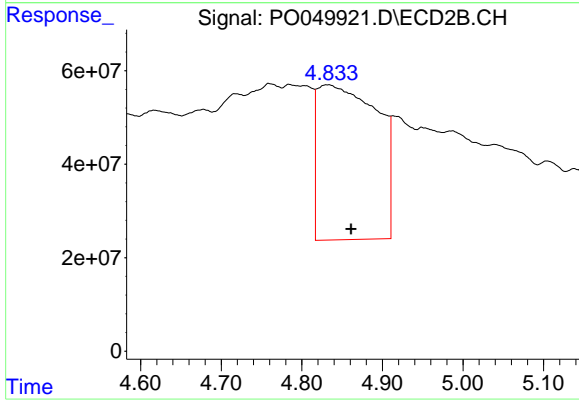
#13 AR-1232-3

R.T.: 4.784 min  
 Delta R.T.: 0.005 min  
 Response: 448807385  
 Conc: 136221.35 ng/ml



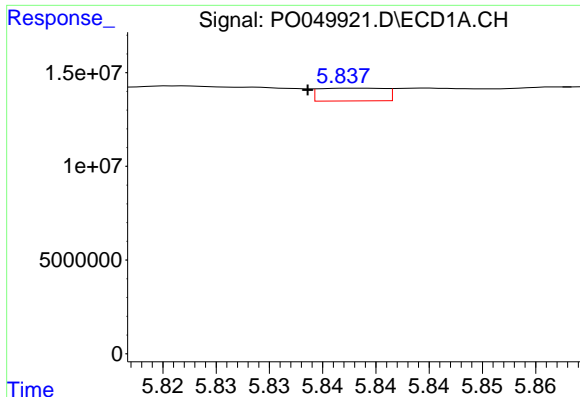
#14 AR-1232-4

R.T.: 5.696 min  
 Delta R.T.: -0.048 min  
 Response: 183299458  
 Conc: 66149.65 ng/ml



#14 AR-1232-4

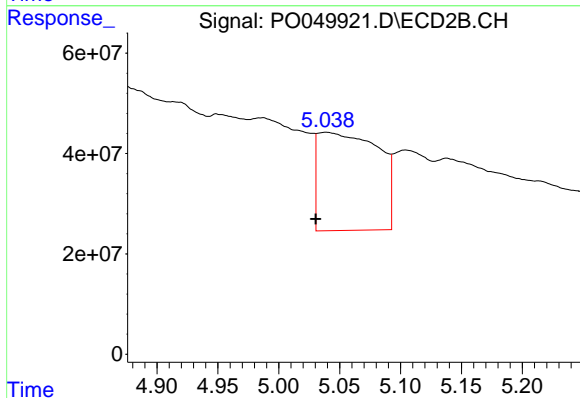
R.T.: 4.834 min  
 Delta R.T.: -0.027 min  
 Response: 1707484575  
 Conc: 621921.62 ng/ml



#15 AR-1232-5

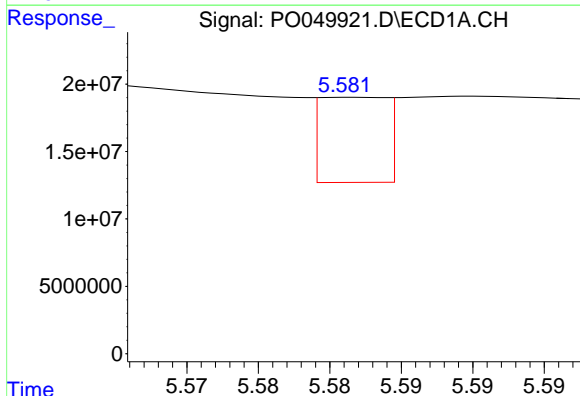
R.T.: 5.838 min  
 Delta R.T.: 0.004 min  
 Response: 2929728  
 Conc: 1510.01 ng/ml

Instrument :  
 ECD\_O  
 ClientSampleId :  
 SV253553LC



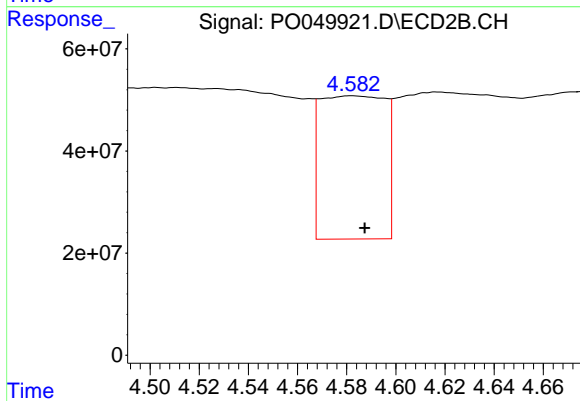
#15 AR-1232-5

R.T.: 5.039 min  
 Delta R.T.: 0.008 min  
 Response: 673756801  
 Conc: 215615.31 ng/ml



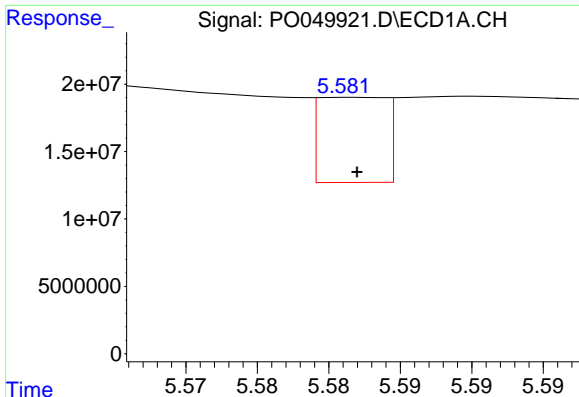
#16 AR-1242-1

R.T.: 5.582 min  
 Delta R.T.: 0.022 min  
 Response: 20460937  
 Conc: 2576.68 ng/ml



#16 AR-1242-1

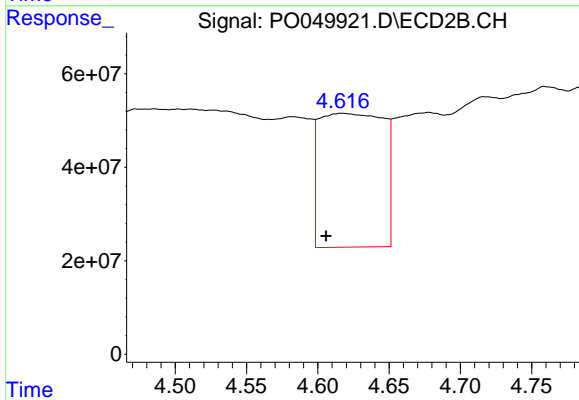
R.T.: 4.582 min  
 Delta R.T.: -0.005 min  
 Response: 511815817  
 Conc: 61720.85 ng/ml



#17 AR-1242-2

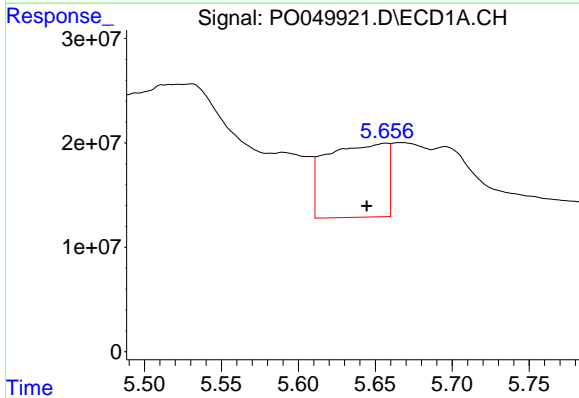
R.T.: 5.582 min  
 Delta R.T.: 0.000 min  
 Response: 20460937  
 Conc: 1866.61 ng/ml

Instrument :  
 ECD\_O  
 ClientSampleId :  
 SV253553LC



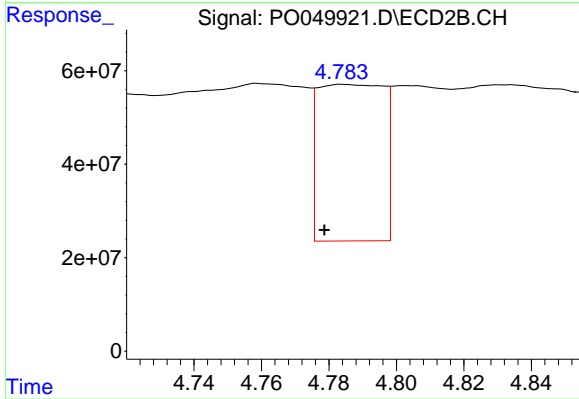
#17 AR-1242-2

R.T.: 4.616 min  
 Delta R.T.: 0.010 min  
 Response: 893109557  
 Conc: 77523.64 ng/ml



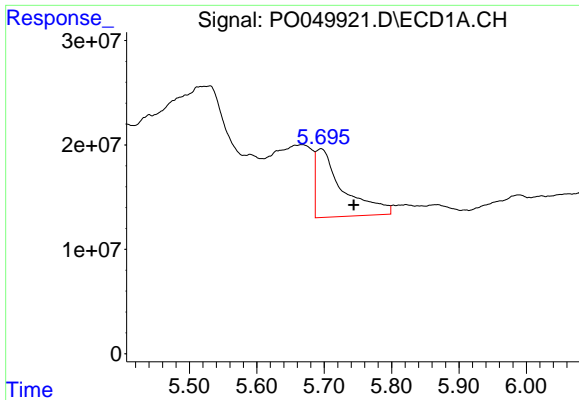
#18 AR-1242-3

R.T.: 5.657 min  
 Delta R.T.: 0.012 min  
 Response: 193396418  
 Conc: 27856.15 ng/ml



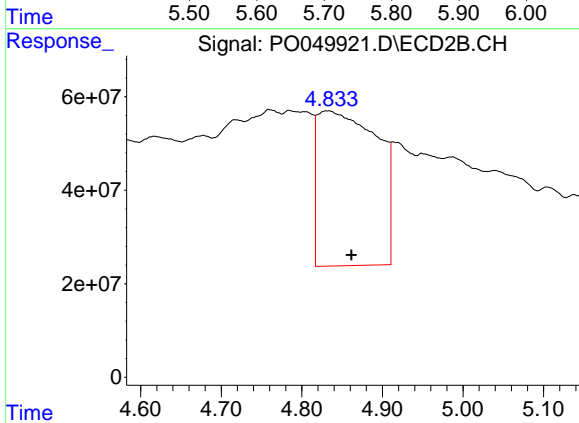
#18 AR-1242-3

R.T.: 4.784 min  
 Delta R.T.: 0.005 min  
 Response: 448807385  
 Conc: 69850.16 ng/ml

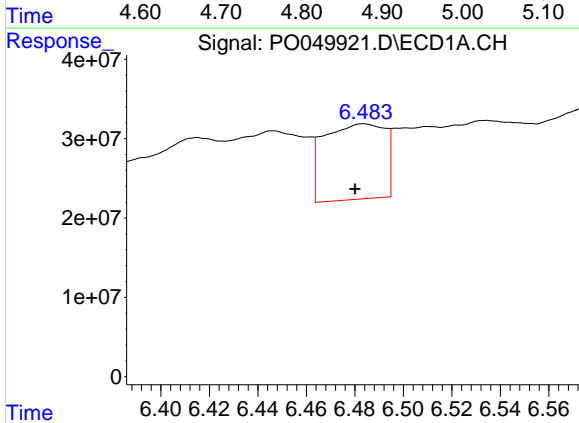


#19 AR-1242-4  
 R.T.: 5.696 min  
 Delta R.T.: -0.048 min  
 Response: 183299458  
 Conc: 30835.46 ng/ml

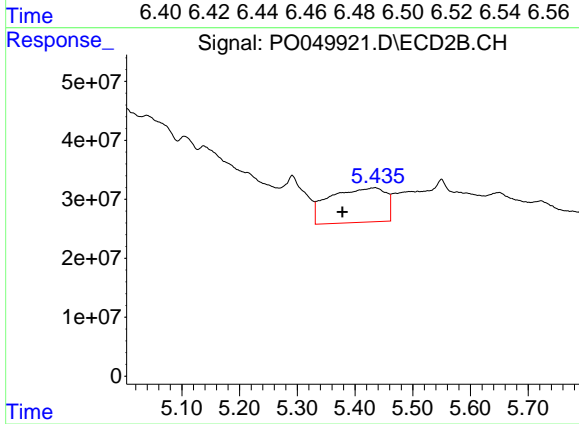
Instrument :  
 ECD\_O  
 ClientSampleId :  
 SV253553LC



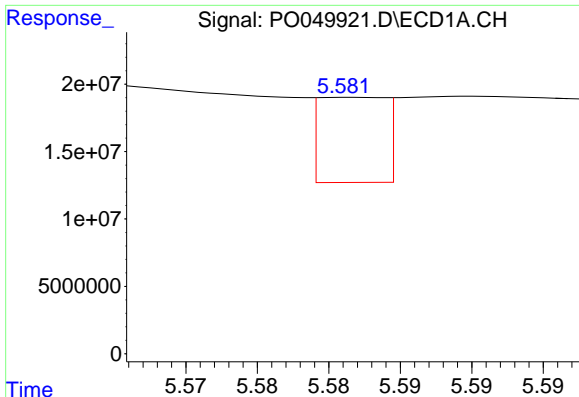
#19 AR-1242-4  
 R.T.: 4.834 min  
 Delta R.T.: -0.027 min  
 Response: 1707484575  
 Conc: 285190.67 ng/ml



#20 AR-1242-5  
 R.T.: 6.484 min  
 Delta R.T.: 0.004 min  
 Response: 165998504  
 Conc: 23072.55 ng/ml



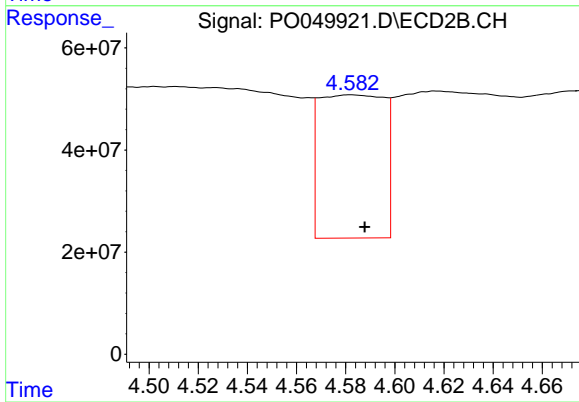
#20 AR-1242-5  
 R.T.: 5.435 min  
 Delta R.T.: 0.057 min  
 Response: 394447743  
 Conc: 49145.71 ng/ml



#21 AR-1248-1

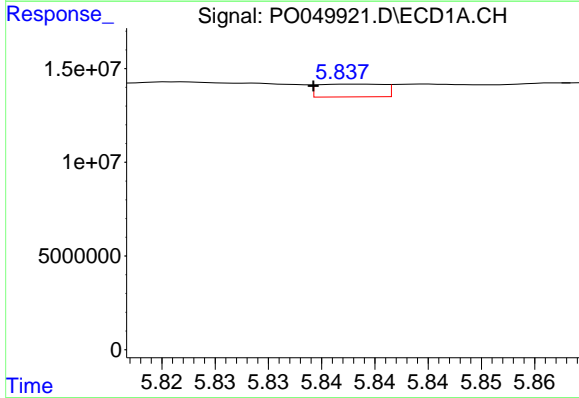
R.T.: 5.582 min  
 Delta R.T.: 0.020 min  
 Response: 20460937  
 Conc: 3404.45 ng/ml

Instrument :  
 ECD\_O  
 ClientSampleId :  
 SV253553LC



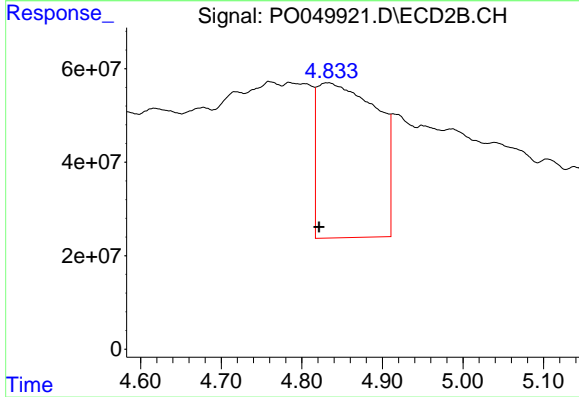
#21 AR-1248-1

R.T.: 4.582 min  
 Delta R.T.: -0.006 min  
 Response: 511815817  
 Conc: 77134.47 ng/ml



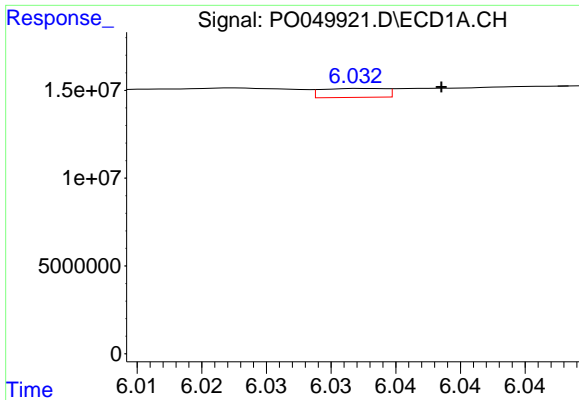
#22 AR-1248-2

R.T.: 5.838 min  
 Delta R.T.: 0.004 min  
 Response: 2929728  
 Conc: 352.01 ng/ml



#22 AR-1248-2

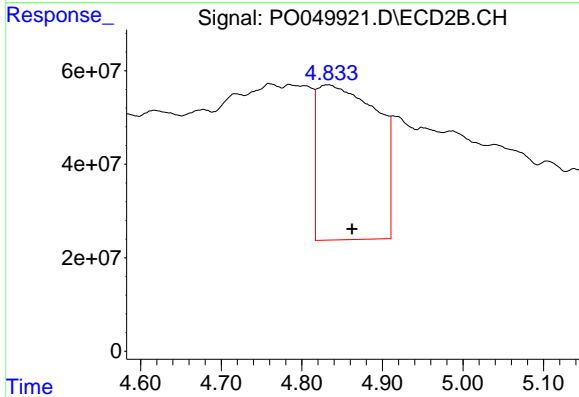
R.T.: 4.834 min  
 Delta R.T.: 0.013 min  
 Response: 1707484575  
 Conc: 200706.82 ng/ml



#23 AR-1248-3

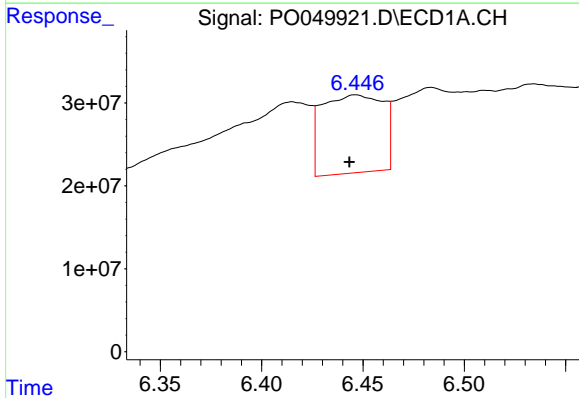
R.T.: 6.033 min  
 Delta R.T.: -0.006 min  
 Response: 1727786  
 Conc: 178.70 ng/ml

Instrument :  
 ECD\_O  
 ClientSampleId :  
 SV253553LC



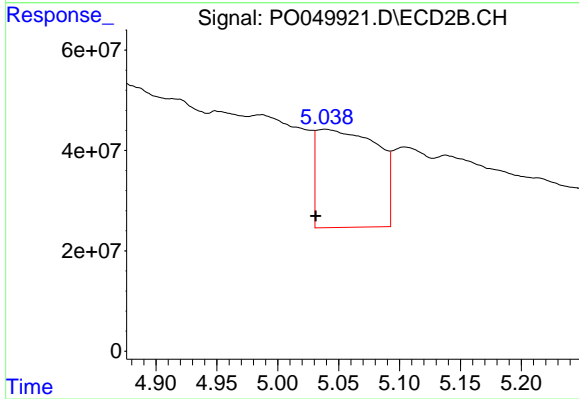
#23 AR-1248-3

R.T.: 4.834 min  
 Delta R.T.: -0.028 min  
 Response: 1707484575  
 Conc: 194541.22 ng/ml



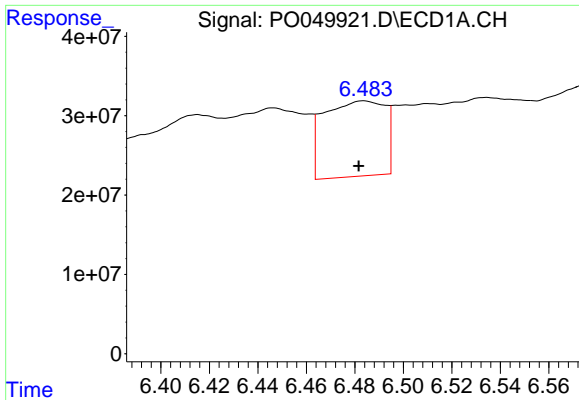
#24 AR-1248-4

R.T.: 6.446 min  
 Delta R.T.: 0.003 min  
 Response: 197498396  
 Conc: 15962.60 ng/ml



#24 AR-1248-4

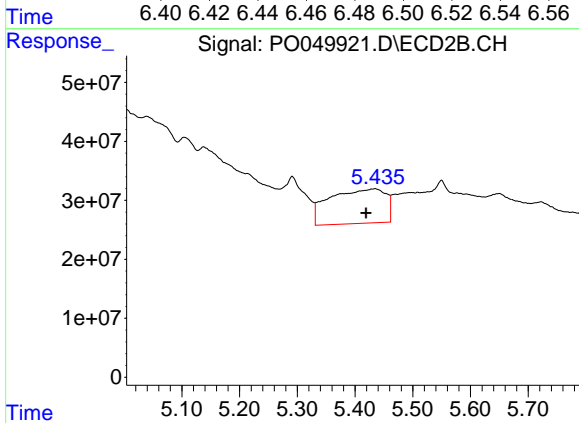
R.T.: 5.039 min  
 Delta R.T.: 0.007 min  
 Response: 673756801  
 Conc: 61995.49 ng/ml



#25 AR-1248-5

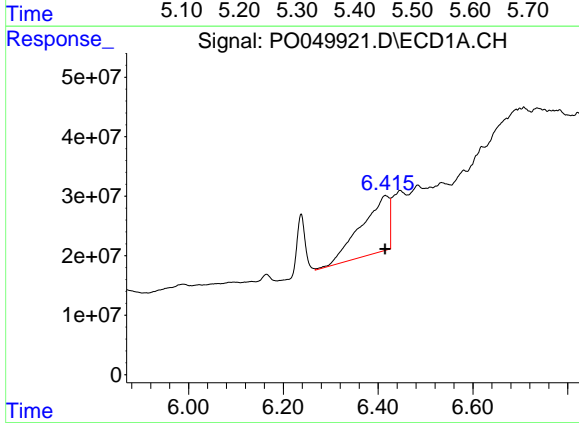
R.T.: 6.484 min  
 Delta R.T.: 0.002 min  
 Response: 165998504  
 Conc: 14143.93 ng/ml

Instrument :  
 ECD\_O  
 ClientSampled :  
 SV253553LC



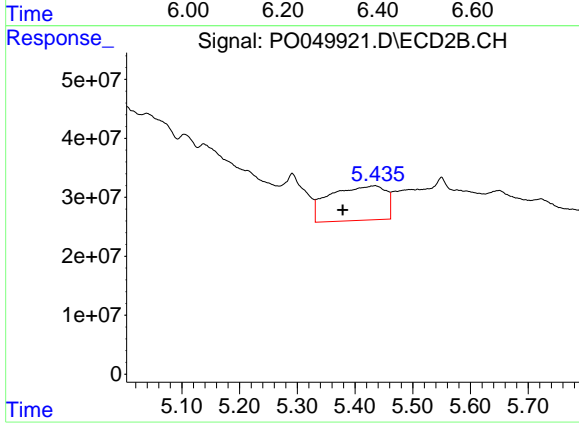
#25 AR-1248-5

R.T.: 5.435 min  
 Delta R.T.: 0.016 min  
 Response: 394447743  
 Conc: 34745.44 ng/ml



#26 AR-1254-1

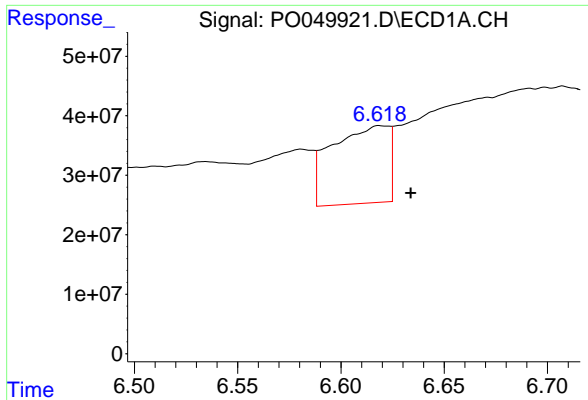
R.T.: 6.415 min  
 Delta R.T.: 0.000 min  
 Response: 391394638  
 Conc: 28462.19 ng/ml



#26 AR-1254-1

R.T.: 5.435 min  
 Delta R.T.: 0.056 min  
 Response: 394447743  
 Conc: 20121.19 ng/ml

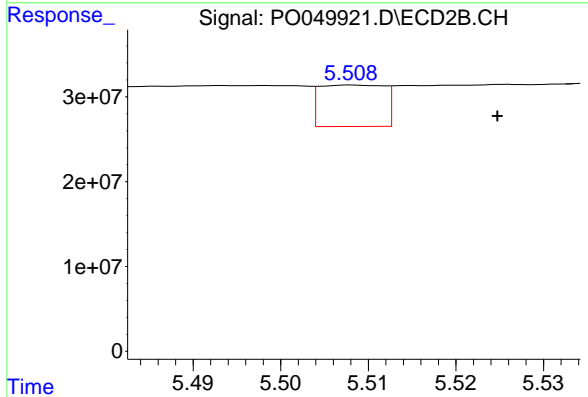




#27 AR-1254-2

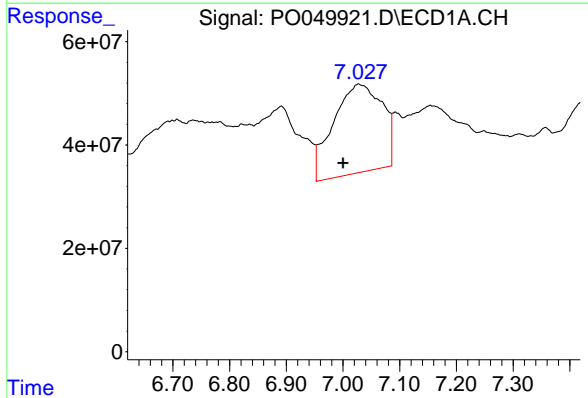
R.T.: 6.618 min  
 Delta R.T.: -0.015 min  
 Response: 249874556  
 Conc: 11317.06 ng/ml

**Instrument :**  
 ECD\_O  
**ClientSampled :**  
 SV253553LC



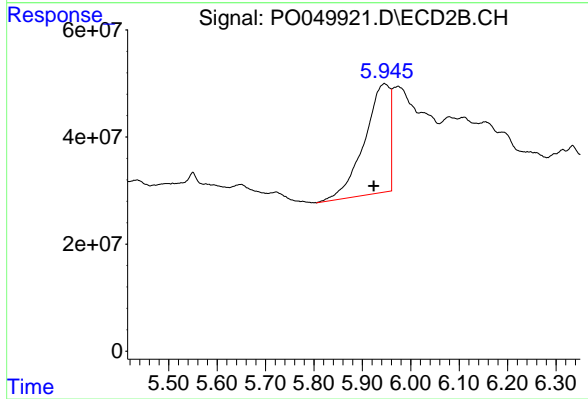
#27 AR-1254-2

R.T.: 5.508 min  
 Delta R.T.: -0.016 min  
 Response: 25120919  
 Conc: 1500.89 ng/ml



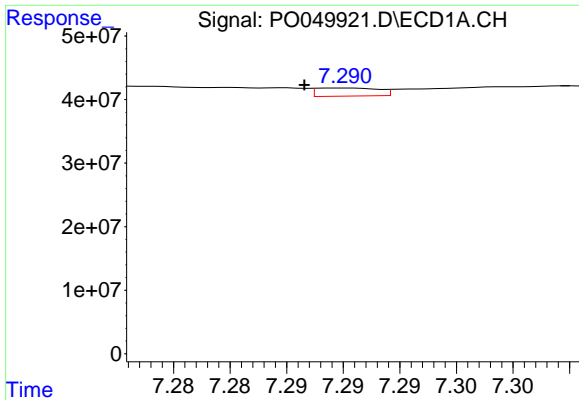
#28 AR-1254-3

R.T.: 7.027 min  
 Delta R.T.: 0.027 min  
 Response: 1026686896  
 Conc: 42078.85 ng/ml



#28 AR-1254-3

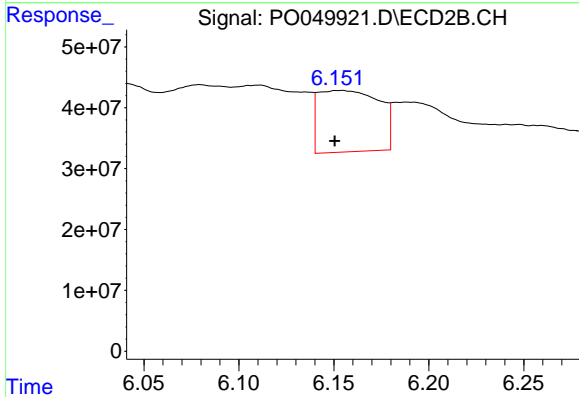
R.T.: 5.945 min  
 Delta R.T.: 0.022 min  
 Response: 747404503  
 Conc: 26775.44 ng/ml



#29 AR-1254-4

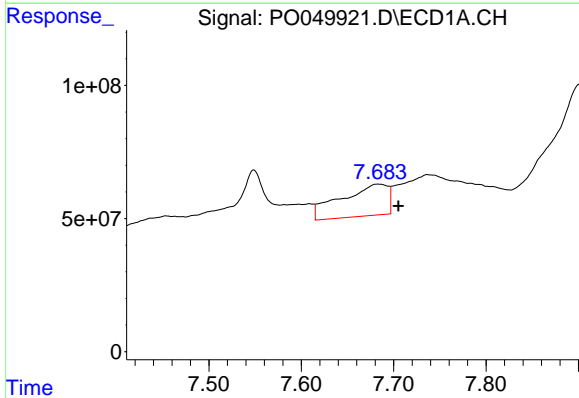
R.T.: 7.290 min  
 Delta R.T.: 0.003 min  
 Response: 4845758  
 Conc: 236.28 ng/ml

Instrument :  
 ECD\_O  
 ClientSampleId :  
 SV253553LC



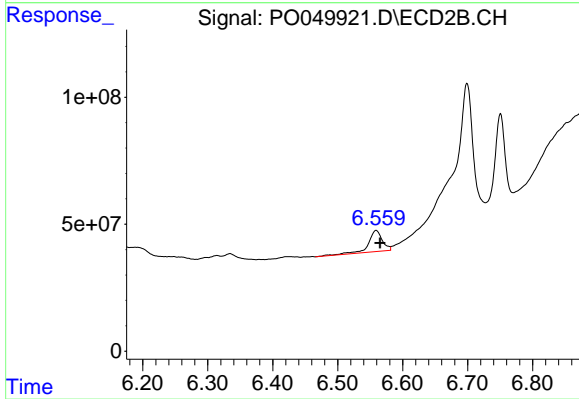
#29 AR-1254-4

R.T.: 6.154 min  
 Delta R.T.: 0.003 min  
 Response: 224993031  
 Conc: 11212.50 ng/ml



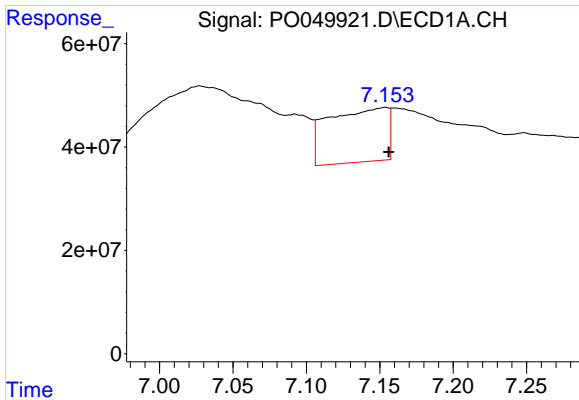
#30 AR-1254-5

R.T.: 7.683 min  
 Delta R.T.: -0.022 min  
 Response: 420090967  
 Conc: 21799.03 ng/ml



#30 AR-1254-5

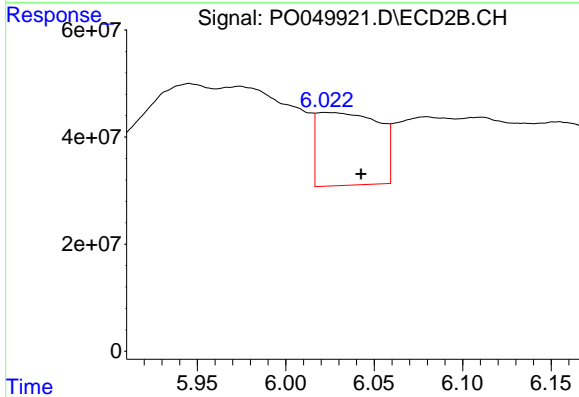
R.T.: 6.559 min  
 Delta R.T.: -0.006 min  
 Response: 124130652  
 Conc: 4639.05 ng/ml



#31 AR-1260-1

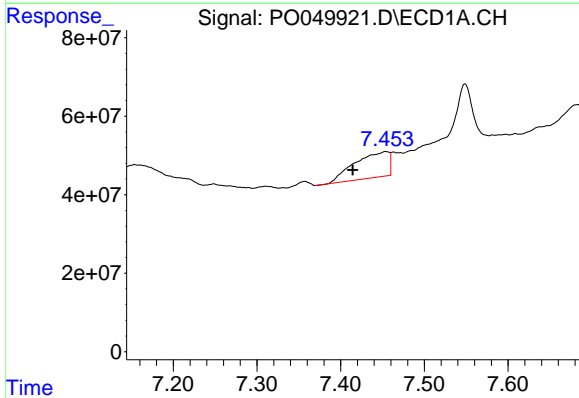
R.T.: 7.154 min  
 Delta R.T.: -0.002 min  
 Response: 292972728  
 Conc: 15878.54 ng/ml

Instrument :  
 ECD\_O  
 ClientSampleId :  
 SV253553LC



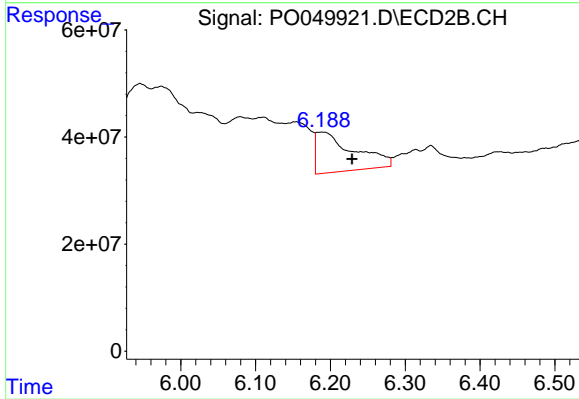
#31 AR-1260-1

R.T.: 6.022 min  
 Delta R.T.: -0.020 min  
 Response: 329226876  
 Conc: 15944.28 ng/ml



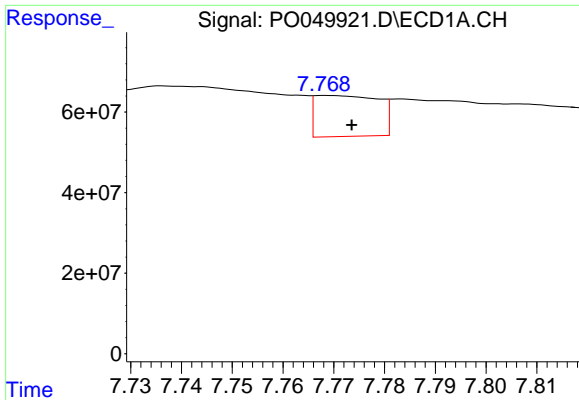
#32 AR-1260-2

R.T.: 7.453 min  
 Delta R.T.: 0.039 min  
 Response: 187247430  
 Conc: 7808.33 ng/ml



#32 AR-1260-2

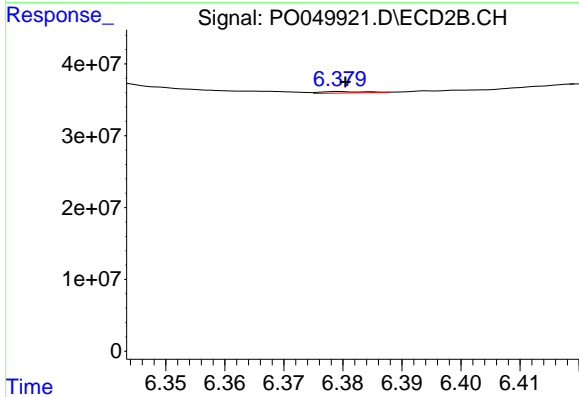
R.T.: 6.189 min  
 Delta R.T.: -0.040 min  
 Response: 262338624  
 Conc: 9356.20 ng/ml



#33 AR-1260-3

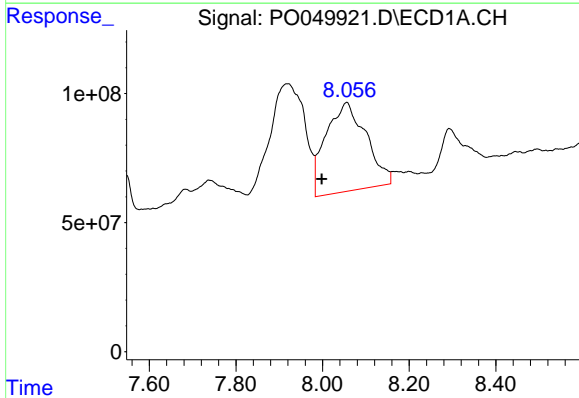
R.T.: 7.768 min  
 Delta R.T.: -0.005 min  
 Response: 88174138  
 Conc: 4663.70 ng/ml

Instrument :  
 ECD\_O  
 ClientSampleId :  
 SV253553LC



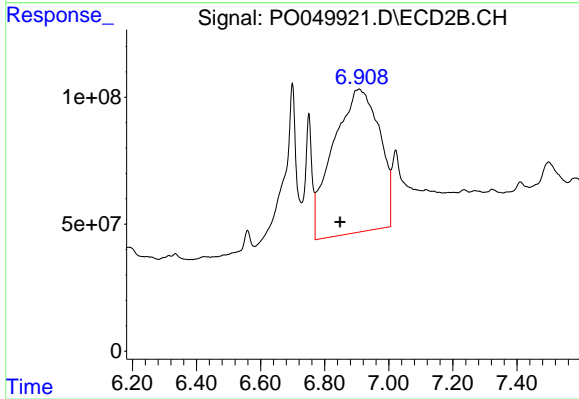
#33 AR-1260-3

R.T.: 6.379 min  
 Delta R.T.: 0.000 min  
 Response: 1053624  
 Conc: 43.24 ng/ml



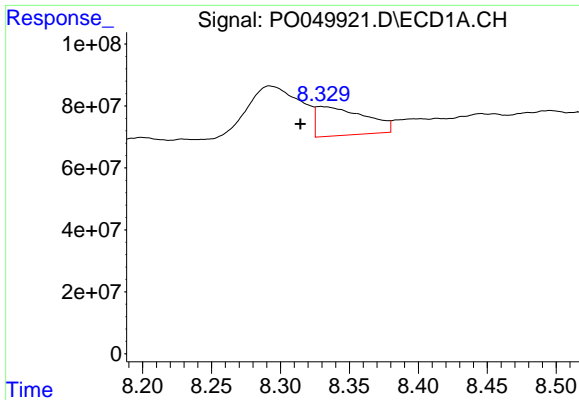
#34 AR-1260-4

R.T.: 8.056 min  
 Delta R.T.: 0.058 min  
 Response: 2211179105  
 Conc: 116453.59 ng/ml



#34 AR-1260-4

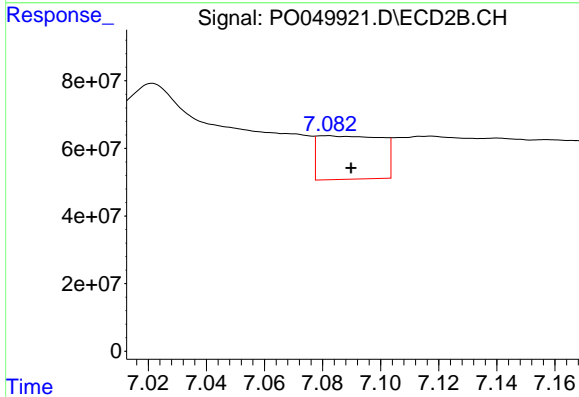
R.T.: 6.908 min  
 Delta R.T.: 0.060 min  
 Response: 5658683395  
 Conc: 292998.47 ng/ml



#35 AR-1260-5

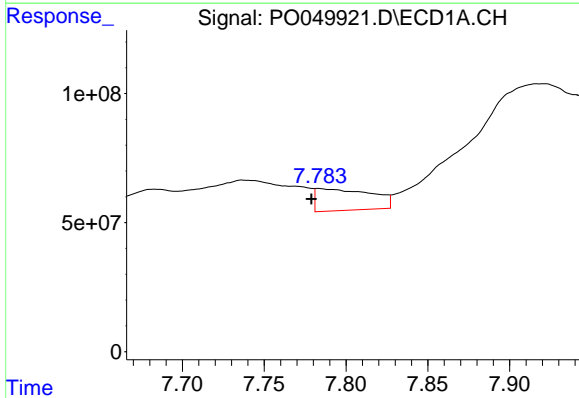
R.T.: 8.329 min  
 Delta R.T.: 0.015 min  
 Response: 229808221  
 Conc: 5432.30 ng/ml

Instrument :  
 ECD\_O  
 ClientSampleId :  
 SV253553LC



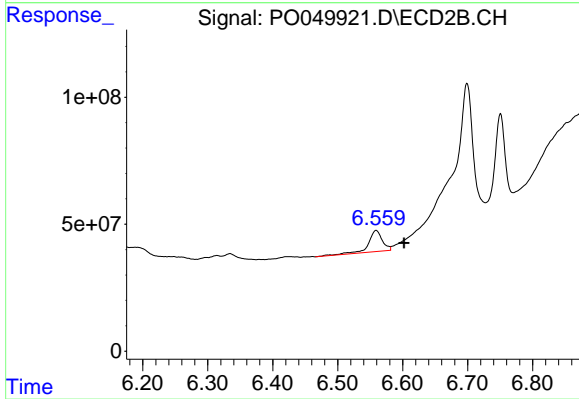
#35 AR-1260-5

R.T.: 7.081 min  
 Delta R.T.: -0.008 min  
 Response: 195867949  
 Conc: 3820.36 ng/ml



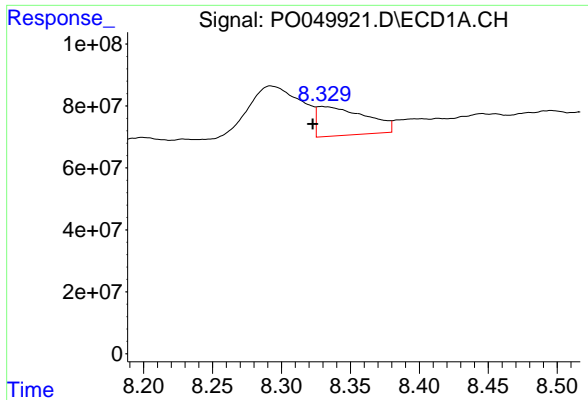
#36 AR-1262-1

R.T.: 7.783 min  
 Delta R.T.: 0.004 min  
 Response: 198580551  
 Conc: 9406.89 ng/ml



#36 AR-1262-1

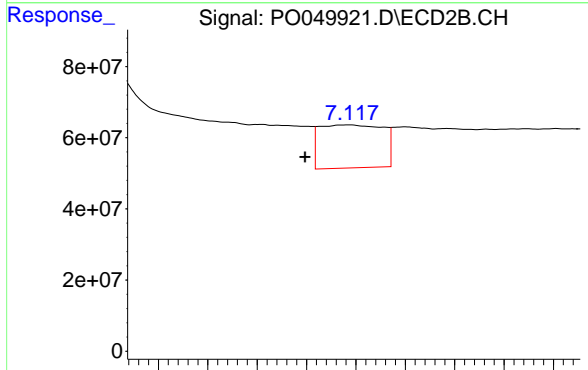
R.T.: 6.559 min  
 Delta R.T.: -0.043 min  
 Response: 124130652  
 Conc: 5060.34 ng/ml



#37 AR-1262-2

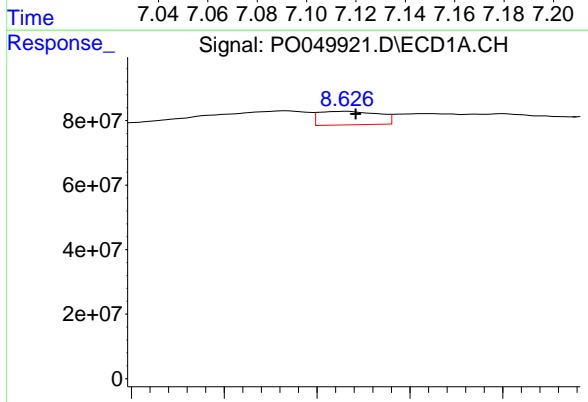
R.T.: 8.329 min  
 Delta R.T.: 0.007 min  
 Response: 229808221  
 Conc: 6168.33 ng/ml

Instrument :  
 ECD\_O  
 ClientSampleId :  
 SV253553LC



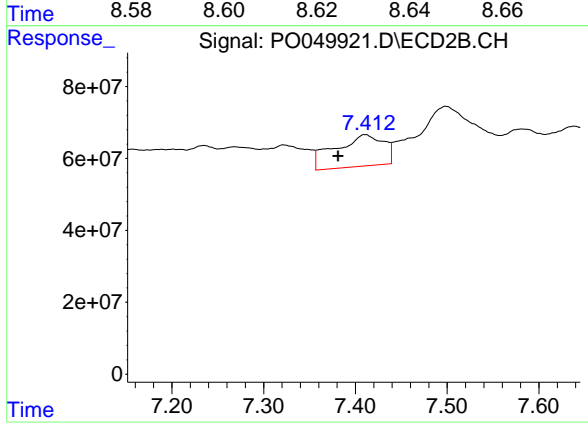
#37 AR-1262-2

R.T.: 7.117 min  
 Delta R.T.: 0.018 min  
 Response: 216090963  
 Conc: 5106.10 ng/ml



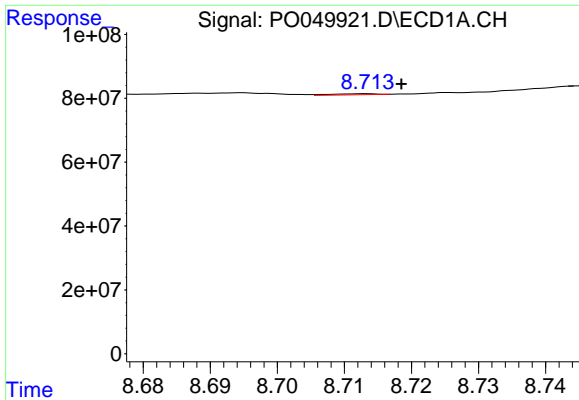
#38 AR-1262-3

R.T.: 8.626 min  
 Delta R.T.: -0.002 min  
 Response: 37519500  
 Conc: 1555.39 ng/ml



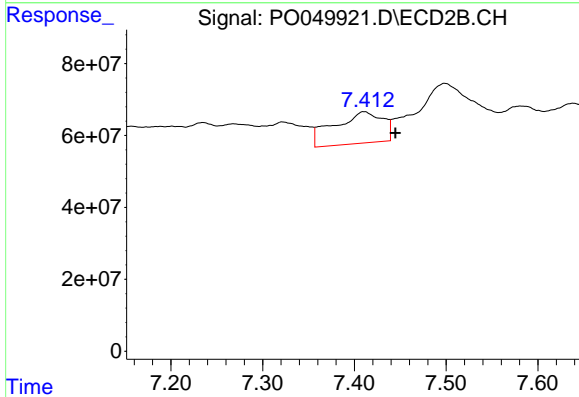
#38 AR-1262-3

R.T.: 7.411 min  
 Delta R.T.: 0.030 min  
 Response: 322172522  
 Conc: 19142.06 ng/ml

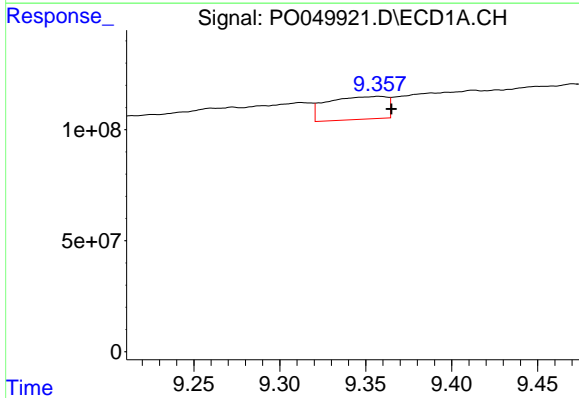


#39 AR-1262-4  
 R.T.: 8.713 min  
 Delta R.T.: -0.005 min  
 Response: 1478861  
 Conc: 77.98 ng/ml

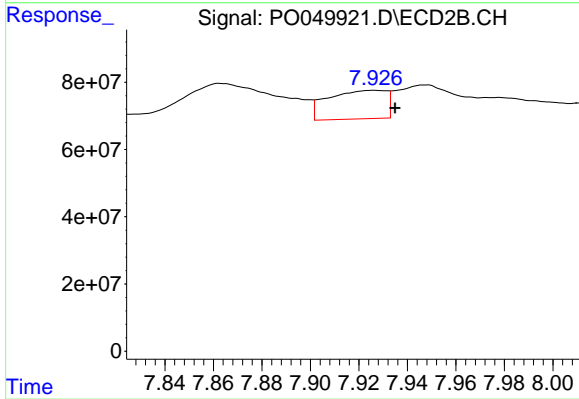
Instrument :  
 ECD\_O  
 ClientSampleId :  
 SV253553LC



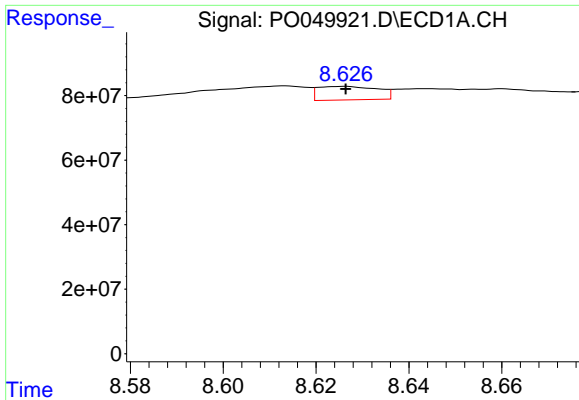
#39 AR-1262-4  
 R.T.: 7.411 min  
 Delta R.T.: -0.034 min  
 Response: 322172522  
 Conc: 10933.03 ng/ml



#40 AR-1262-5  
 R.T.: 9.357 min  
 Delta R.T.: -0.007 min  
 Response: 248712666  
 Conc: 18204.72 ng/ml

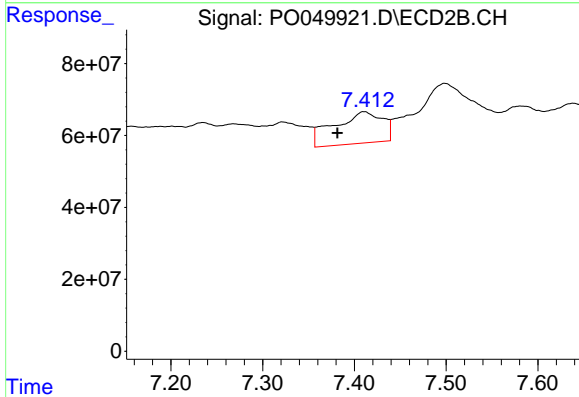


#40 AR-1262-5  
 R.T.: 7.926 min  
 Delta R.T.: -0.009 min  
 Response: 141798592  
 Conc: 10638.48 ng/ml

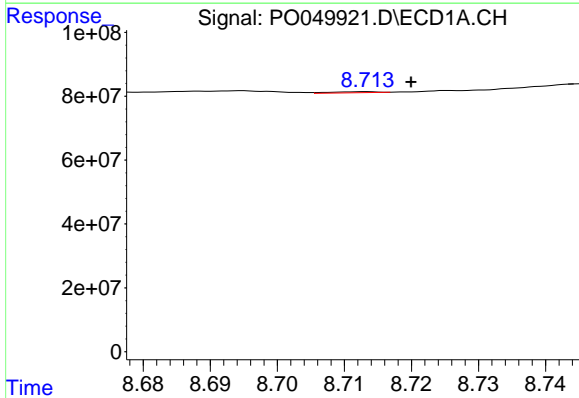


#41 AR-1268-1  
 R.T.: 8.626 min  
 Delta R.T.: 0.000 min  
 Response: 37519500  
 Conc: 750.44 ng/ml

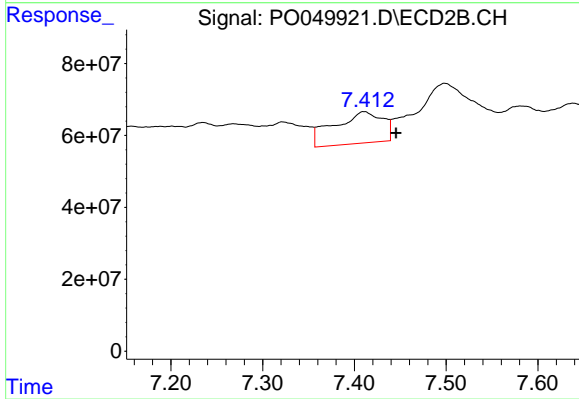
**Instrument :**  
 ECD\_O  
**ClientSampleId :**  
 SV253553LC



#41 AR-1268-1  
 R.T.: 7.411 min  
 Delta R.T.: 0.029 min  
 Response: 322172522  
 Conc: 6022.84 ng/ml

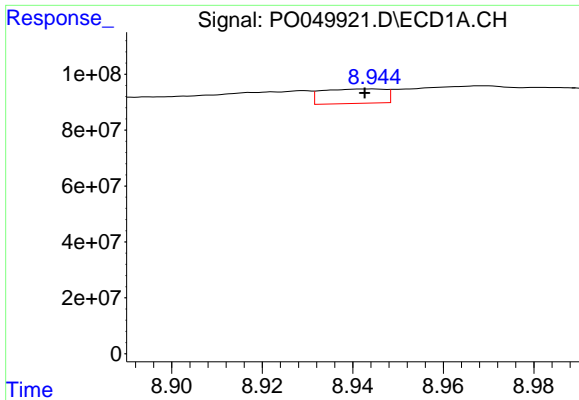


#42 AR-1268-2  
 R.T.: 8.713 min  
 Delta R.T.: -0.007 min  
 Response: 1478861  
 Conc: 32.61 ng/ml



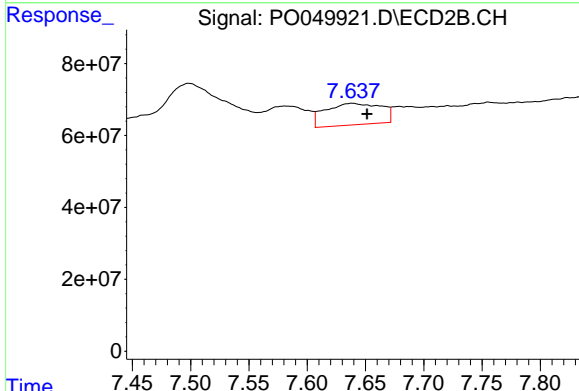
#42 AR-1268-2  
 R.T.: 7.411 min  
 Delta R.T.: -0.035 min  
 Response: 322172522  
 Conc: 6642.37 ng/ml



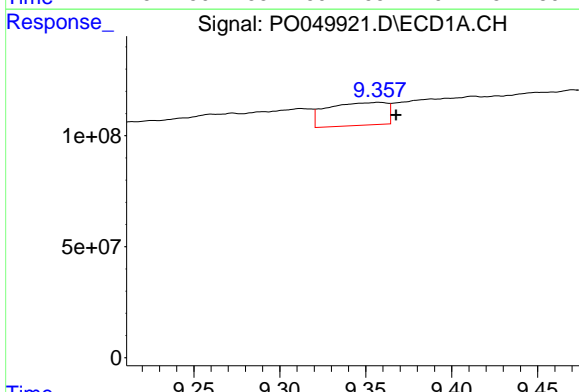


#43 AR-1268-3  
 R.T.: 8.944 min  
 Delta R.T.: 0.002 min  
 Response: 49795950  
 Conc: 1247.82 ng/ml

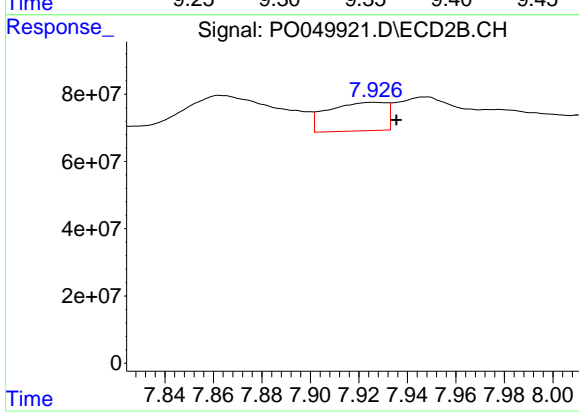
**Instrument :**  
 ECD\_O  
**ClientSampleId :**  
 SV253553LC



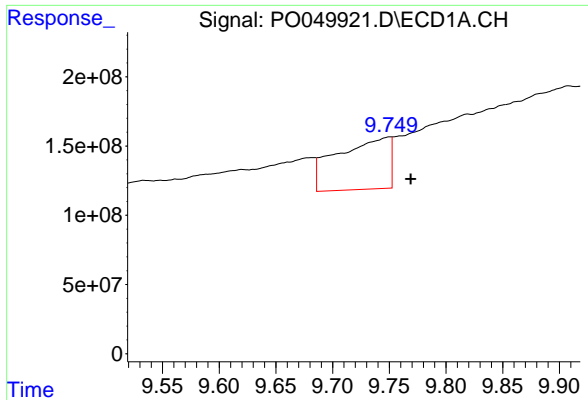
#43 AR-1268-3  
 R.T.: 7.639 min  
 Delta R.T.: -0.013 min  
 Response: 199555284  
 Conc: 4953.23 ng/ml



#44 AR-1268-4  
 R.T.: 9.357 min  
 Delta R.T.: -0.010 min  
 Response: 248712666  
 Conc: 14592.33 ng/ml



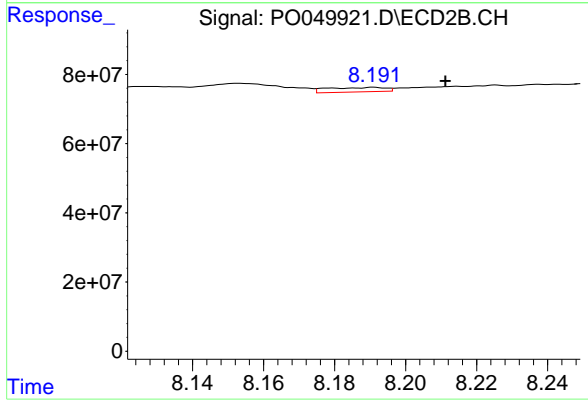
#44 AR-1268-4  
 R.T.: 7.926 min  
 Delta R.T.: -0.009 min  
 Response: 141798592  
 Conc: 8515.24 ng/ml



#45 AR-1268-5

R.T.: 9.750 min  
 Delta R.T.: -0.019 min  
 Response: 1198470743  
 Conc: 9870.43 ng/ml

Instrument :  
 ECD\_O  
 ClientSampleId :  
 SV253553LC



#45 AR-1268-5

R.T.: 8.191 min  
 Delta R.T.: -0.020 min  
 Response: 14805126  
 Conc: 142.55 ng/ml