

Data Path : Z:\pestpcbsrv\HPCHEM1\ECD_0\Data\PO101121\
 Data File : PO081975.D
 Signal(s) : Signal #1: ECD1A.CH Signal #2: ECD2B.CH
 Acq On : 11 Oct 2021 17:30
 Operator : AJ\MA
 Sample : M4159-10MSD
 Misc :
 ALS Vial : 23 Sample Multiplier: 1

Instrument :
 ECD_O
 ClientSampled :

Integration File signal 1: autoint1.e
 Integration File signal 2: autoint2.e
 Quant Time: Oct 12 02:26:59 2021
 Quant Method : Z:\pestpcbsrv\HPCHEM1\ECD_0\methods\PO100621.M
 Quant Title : GC EXTRACTABLES
 QLast Update : Thu Oct 07 09:43:36 2021
 Response via : Initial Calibration
 Integrator: ChemStation 6890 Scale Mode: Small noise peaks clipped

Volume Inj. : 2 µl
 Signal #1 Phase : ZB-MR1 Signal #2 Phase: ZB-MR2
 Signal #1 Info : 30Mx0.32mmx 0.50µ Signal #2 Info : 30M x 0.32mm x 0.25µm

Compound	RT#1	RT#2	Resp#1	Resp#2	ng/ml	ng/ml
System Monitoring Compounds						
1) SA Tetrachlo...	4.989	3.976	1623371	621709	19.563	24.569 #
2) SA Decachlor...	11.113	9.304	1103180	561768	18.599	23.780 #
Target Compounds						
3) L1 AR-1016-1	6.322	5.238	1218886	581026	440.750	559.803 #
4) L1 AR-1016-2	6.346	5.259	1714052	788908	425.734	550.587 #
5) L1 AR-1016-3	6.412	5.449	1078118	426663	437.870	558.397 #
6) L1 AR-1016-4	6.521	5.503	903476	349281	458.477	546.359
7) L1 AR-1016-5	6.838	5.732	847111	421711	447.857	542.684
8) L2 AR-1221-1	5.240	4.235	222089	51112	232.558	165.839 #
9) L2 AR-1221-2	5.342	4.335	152997	66628	236.977	286.254
10) L2 AR-1221-3	5.429	4.424	698125	293836	327.378	389.654
11) L3 AR-1232-1	5.429	4.424	698125	293836	418.549	495.446
12) L3 AR-1232-2	6.024	5.259	950235	788908	1001.658	1301.824 #
13) L3 AR-1232-3	6.346	5.449	1714052	426663	1025.682	1339.463 #
14) L3 AR-1232-4	6.521	5.548	903476	415530	1094.653	1351.923
15) L3 AR-1232-5	6.619	5.732	724641	421711	1200.153	1358.585
16) L4 AR-1242-1	6.322	5.238	1218886	581026	592.699	752.486 #
17) L4 AR-1242-2	6.346	5.259	1714052	788908	584.748	747.216 #
18) L4 AR-1242-3	6.412	5.449	1078118	426663	591.205	755.331 #
19) L4 AR-1242-4	6.521	5.548	903476	415530	634.040	666.680
20) L4 AR-1242-5	7.309	6.113	117310	349351	80.361	478.765 #
21) L5 AR-1248-1	6.322	5.238	1218886	581026	733.761	953.494 #
22) L5 AR-1248-2	6.619	5.503	724641	349281	329.995	413.739 #
23) L5 AR-1248-3	6.838	5.548	847111	415530	345.162	464.352 #
24) L5 AR-1248-4	7.270	5.732	139605	421711	53.347	423.851 #
25) L5 AR-1248-5	7.309	6.156	117310	54624	47.077	57.270
26) L6 AR-1254-1	7.239	6.113	636475	349351	232.658	243.438
27) L6 AR-1254-2	7.470	6.274	684350	343119	167.738	264.641 #
28) L6 AR-1254-3	7.855	6.696	386676	166518	94.768	83.605
29) L6 AR-1254-4	8.150	6.935	236865	69836	78.979	54.678 #
30) L6 AR-1254-5	8.583	7.367	2051771	1245797	628.445	688.445
31) L7 AR-1260-1	8.023	6.833	1605984	789580	511.498	548.450
32) L7 AR-1260-2	8.290	7.032	1740373	959748	471.252	555.886
33) L7 AR-1260-3	8.657	7.187	1122079	882771	453.826	539.805
34) L7 AR-1260-4	8.890	7.672	1341765	620676	449.410	516.232
35) L7 AR-1260-5	9.226	7.921	2407292	1477872	412.203	522.370 #
36) L8 AR-1262-1	8.657	7.367	1122079	1245797	285.385	1246.590 #
37) L8 AR-1262-2	9.226	7.921	2407292	1477872	348.301	458.774 #
38) L8 AR-1262-3	9.567f	8.210	1681841	304784	494.849	228.293 #
39) L8 AR-1262-4	9.623f	8.271	936480	1054862	463.581	438.218
40) L8 AR-1262-5	10.332	8.772	645364	347299	250.160	302.650
41) L9 AR-1268-1	9.567f	8.210	1681841	304784	195.174	77.445 #

Data Path : Z:\pestpcbsrv\HPCHEM1\ECD_0\Data\PO101121\
 Data File : PO081975.D
 Signal(s) : Signal #1: ECD1A.CH Signal #2: ECD2B.CH
 Acq On : 11 Oct 2021 17:30
 Operator : AJ\MA
 Sample : M4159-10MSD
 Misc :
 ALS Vial : 23 Sample Multiplier: 1

Instrument :
 ECD_0
 ClientSampleId :

Integration File signal 1: autoint1.e
 Integration File signal 2: autoint2.e
 Quant Time: Oct 12 02:26:59 2021
 Quant Method : Z:\pestpcbsrv\HPCHEM1\ECD_0\methods\PO100621.M
 Quant Title : GC EXTRACTABLES
 QLast Update : Thu Oct 07 09:43:36 2021
 Response via : Initial Calibration
 Integrator: ChemStation 6890 Scale Mode: Small noise peaks clipped

Volume Inj. : 2 µl
 Signal #1 Phase : ZB-MR1 Signal #2 Phase: ZB-MR2
 Signal #1 Info : 30Mx0.32mmx 0.50µ Signal #2 Info : 30M x 0.32mm x 0.25µm

	Compound	RT#1	RT#2	Resp#1	Resp#2	ng/ml	ng/ml
42)	L9 AR-1268-2	9.623f	8.271	936480	1054862	118.980	297.996 #
43)	L9 AR-1268-3	9.878	8.484	56478	40163	8.265	13.383 #
44)	L9 AR-1268-4	10.332	8.772	645364	347299	216.098	264.071
45)	L9 AR-1268-5	10.762	9.055	222083	126539	9.985	13.805 #

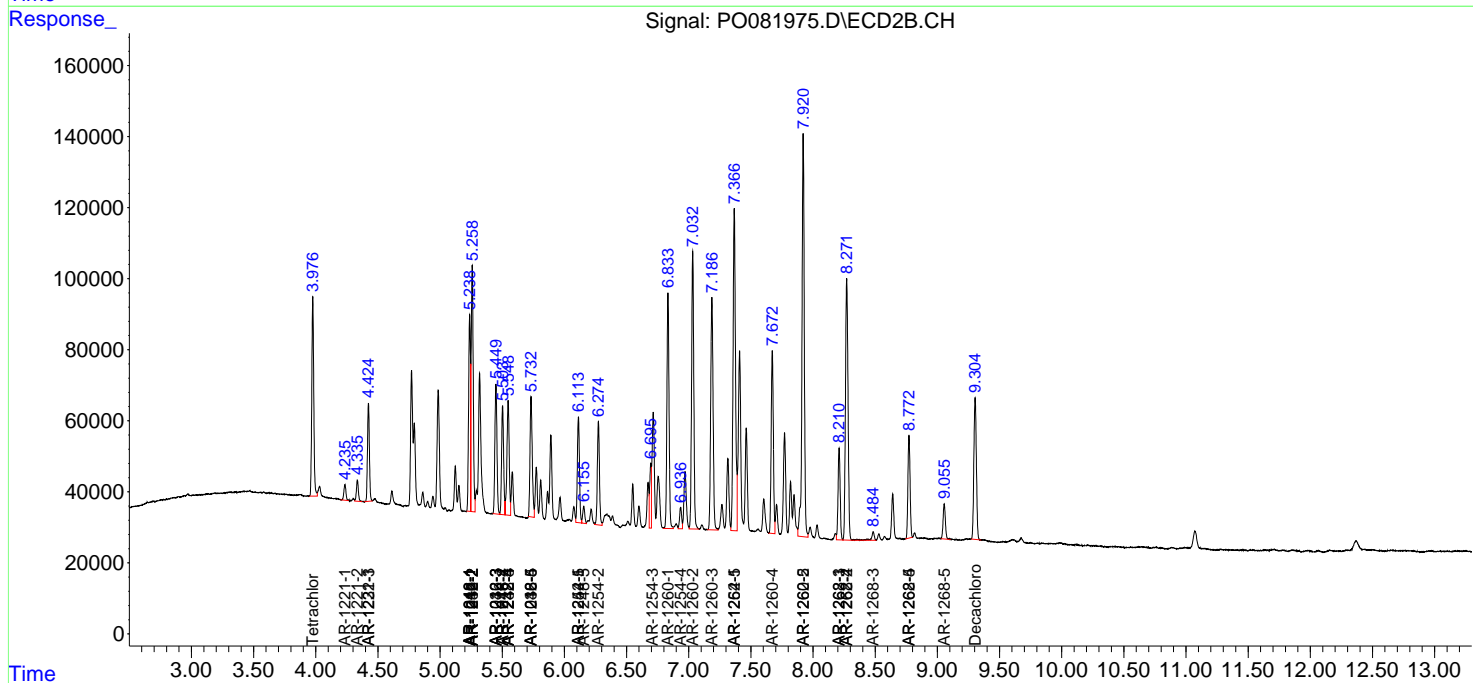
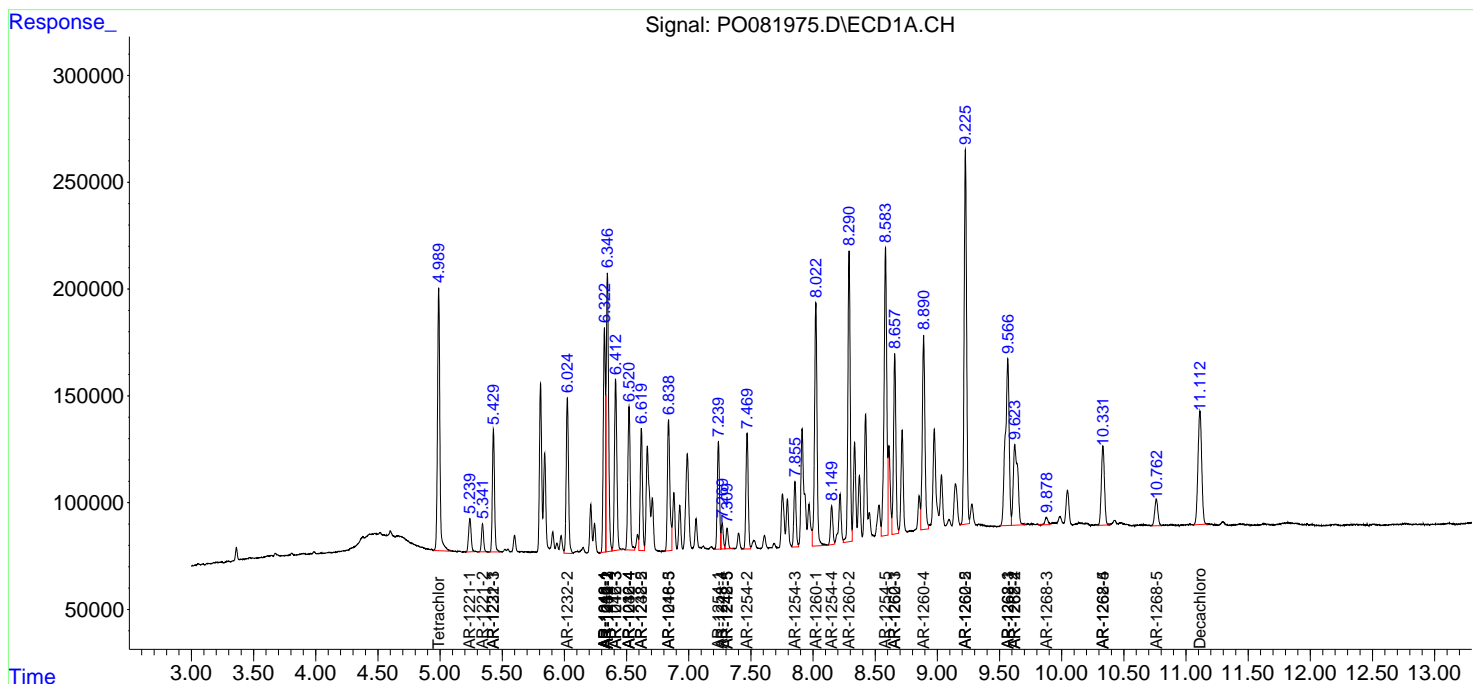
(f)=RT Delta > 1/2 Window (#)=Amounts differ by > 25% (m)=manual int.

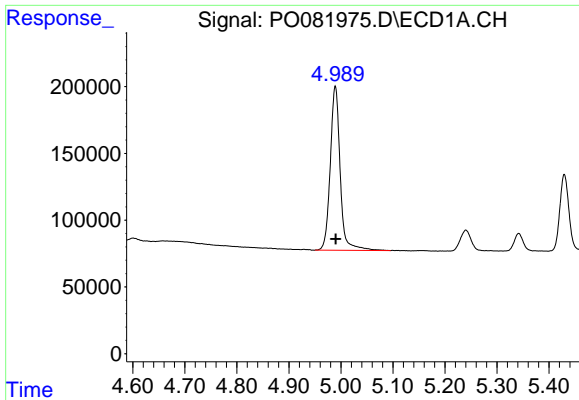
Data Path : Z:\pestpcbsrv\HPCHEM1\ECD_O\Data\PO101121\
 Data File : P0081975.D
 Signal(s) : Signal #1: ECD1A.CH Signal #2: ECD2B.CH
 Acq On : 11 Oct 2021 17:30
 Operator : AJ\MA
 Sample : M4159-10MSD
 Misc :
 ALS Vial : 23 Sample Multiplier: 1

Instrument :
 ECD_O
 ClientSampled :

Integration File signal 1: autoint1.e
 Integration File signal 2: autoint2.e
 Quant Time: Oct 12 02:26:59 2021
 Quant Method : Z:\pestpcbsrv\HPCHEM1\ECD_O\methods\PO100621.M
 Quant Title : GC EXTRACTABLES
 QLast Update : Thu Oct 07 09:43:36 2021
 Response via : Initial Calibration
 Integrator: ChemStation 6890 Scale Mode: Small noise peaks clipped

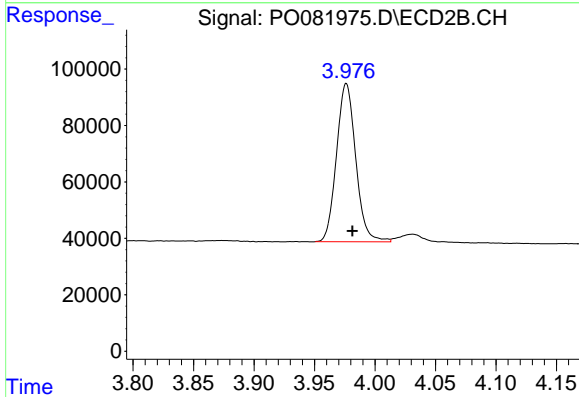
Volume Inj. : 2 µl
 Signal #1 Phase : ZB-MR1 Signal #2 Phase: ZB-MR2
 Signal #1 Info : 30Mx0.32mmx 0.50µ Signal #2 Info : 30M x 0.32mm x 0.25µm



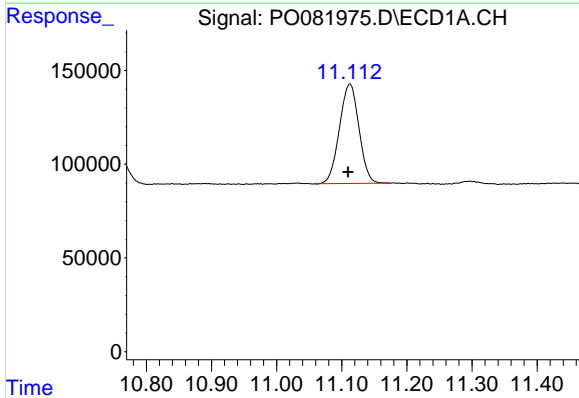


#1 Tetrachloro-m-xylene
 R.T.: 4.989 min
 Delta R.T.: 0.000 min
 Response: 1623371
 Conc: 19.56 ng/ml

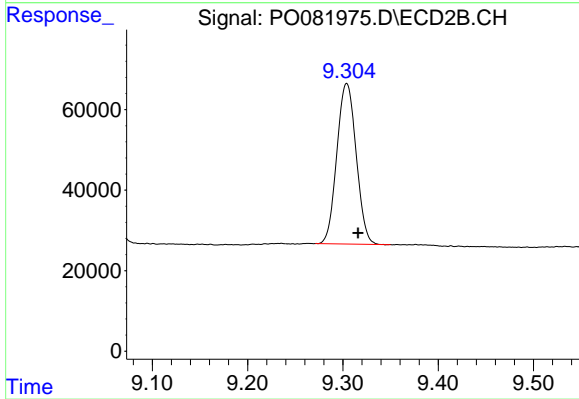
Instrument :
 ECD_O
 ClientSampleId :



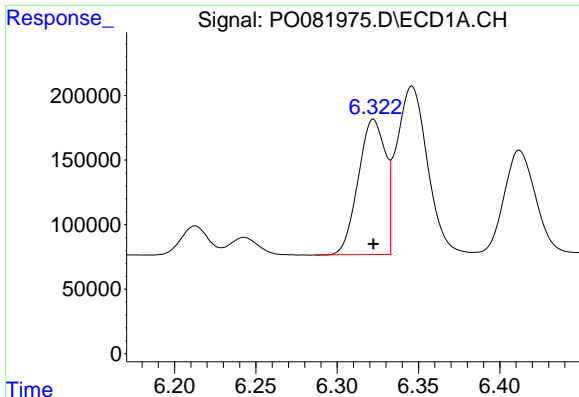
#1 Tetrachloro-m-xylene
 R.T.: 3.976 min
 Delta R.T.: -0.005 min
 Response: 621709
 Conc: 24.57 ng/ml



#2 Decachlorobiphenyl
 R.T.: 11.113 min
 Delta R.T.: 0.003 min
 Response: 1103180
 Conc: 18.60 ng/ml



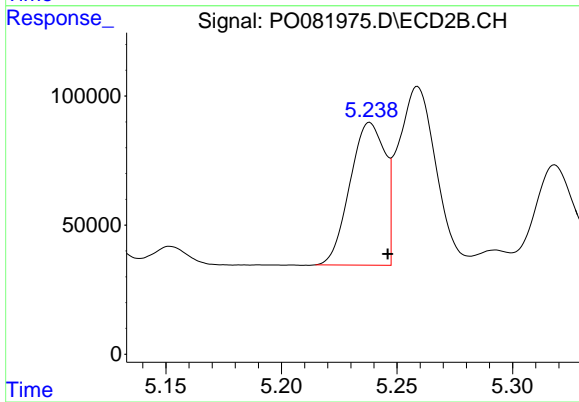
#2 Decachlorobiphenyl
 R.T.: 9.304 min
 Delta R.T.: -0.012 min
 Response: 561768
 Conc: 23.78 ng/ml



#3 AR-1016-1

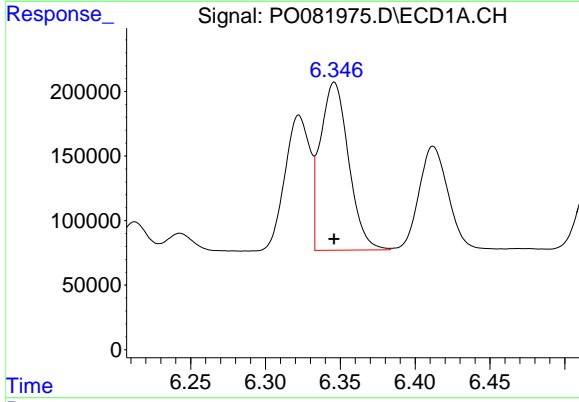
R.T.: 6.322 min
 Delta R.T.: 0.000 min
 Response: 1218886
 Conc: 440.75 ng/ml

Instrument :
 ECD_O
 ClientSampled :



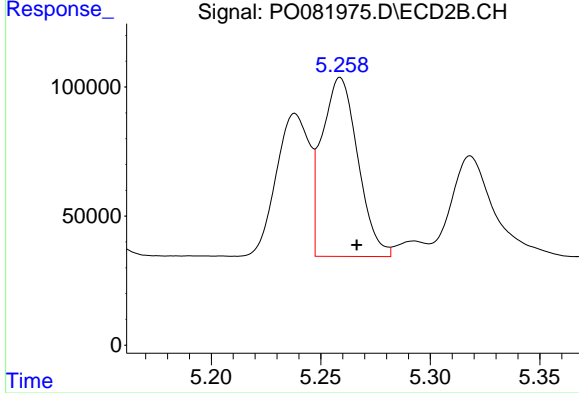
#3 AR-1016-1

R.T.: 5.238 min
 Delta R.T.: -0.008 min
 Response: 581026
 Conc: 559.80 ng/ml



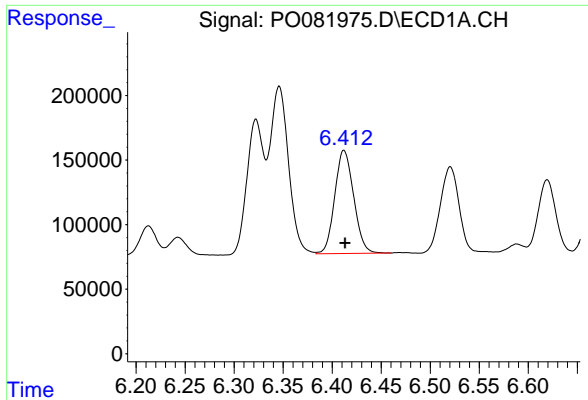
#4 AR-1016-2

R.T.: 6.346 min
 Delta R.T.: 0.000 min
 Response: 1714052
 Conc: 425.73 ng/ml



#4 AR-1016-2

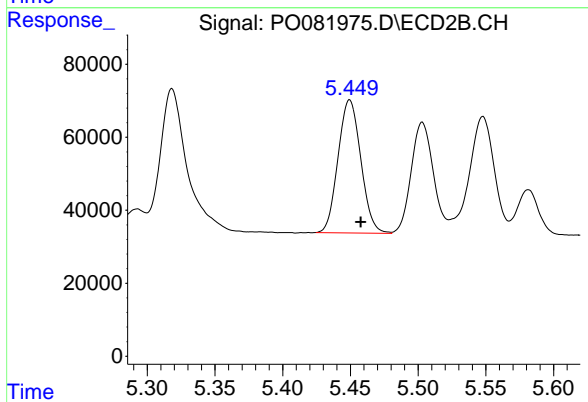
R.T.: 5.259 min
 Delta R.T.: -0.008 min
 Response: 788908
 Conc: 550.59 ng/ml



#5 AR-1016-3

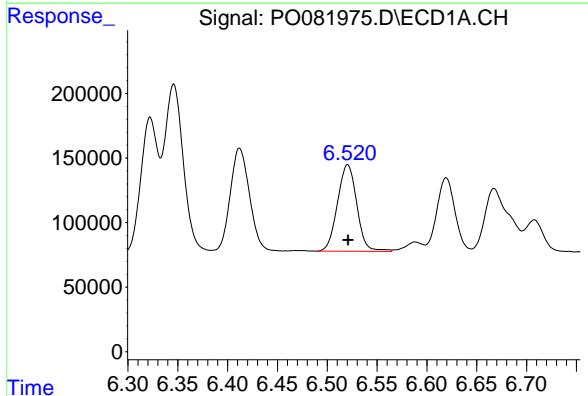
R.T.: 6.412 min
Delta R.T.: -0.001 min
Response: 1078118
Conc: 437.87 ng/ml

Instrument :
ECD_O
ClientSampleId :



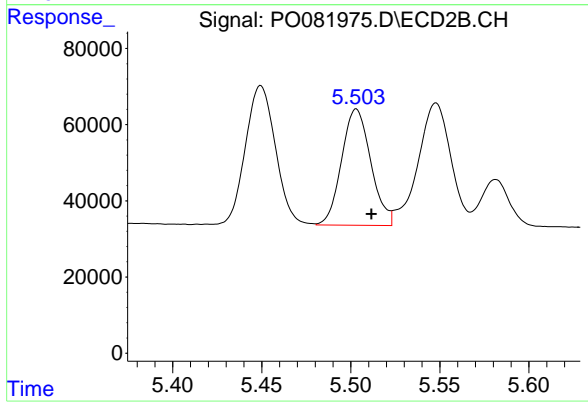
#5 AR-1016-3

R.T.: 5.449 min
Delta R.T.: -0.008 min
Response: 426663
Conc: 558.40 ng/ml



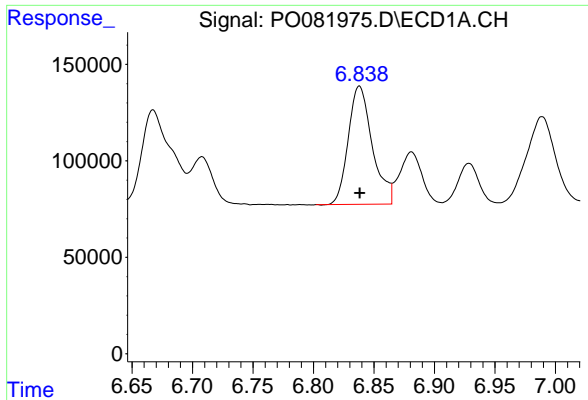
#6 AR-1016-4

R.T.: 6.521 min
Delta R.T.: 0.000 min
Response: 903476
Conc: 458.48 ng/ml



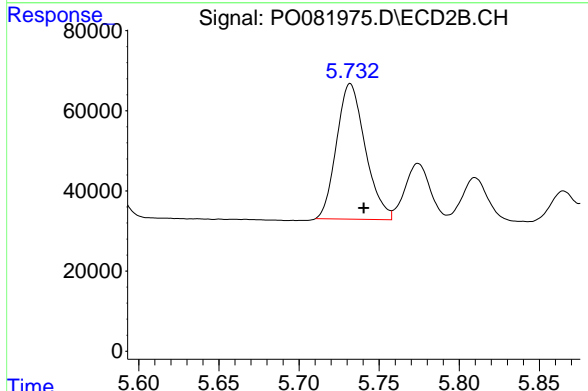
#6 AR-1016-4

R.T.: 5.503 min
Delta R.T.: -0.008 min
Response: 349281
Conc: 546.36 ng/ml

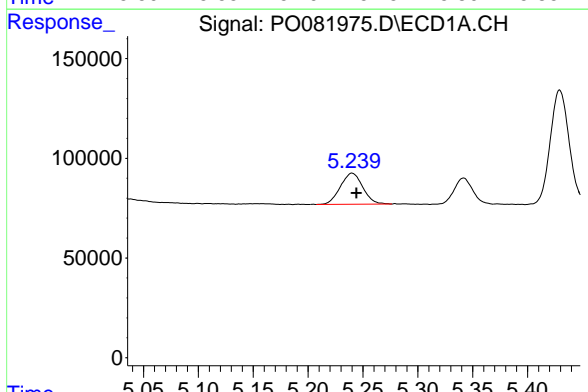


#7 AR-1016-5
 R.T.: 6.838 min
 Delta R.T.: 0.000 min
 Response: 847111
 Conc: 447.86 ng/ml

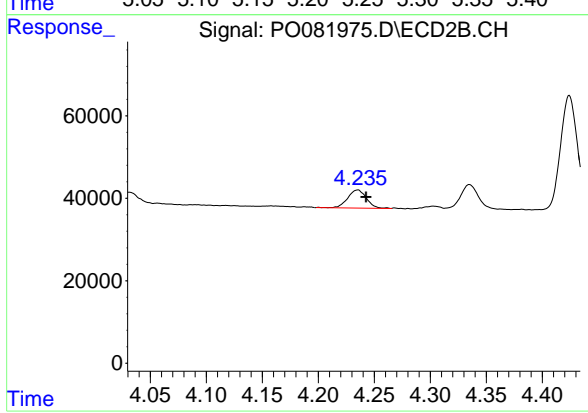
Instrument :
 ECD_O
 ClientSampleId :



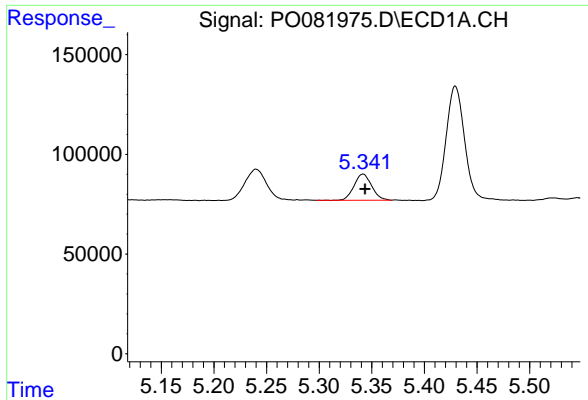
#7 AR-1016-5
 R.T.: 5.732 min
 Delta R.T.: -0.008 min
 Response: 421711
 Conc: 542.68 ng/ml



#8 AR-1221-1
 R.T.: 5.240 min
 Delta R.T.: -0.004 min
 Response: 222089
 Conc: 232.56 ng/ml

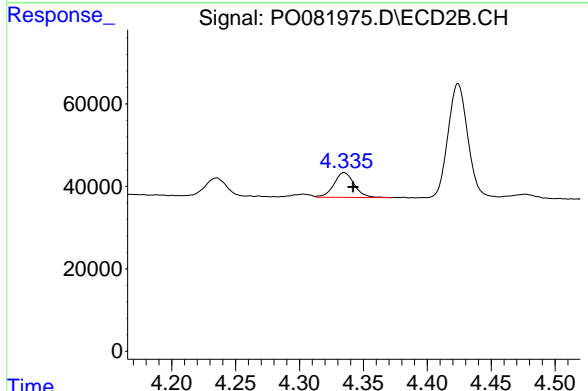


#8 AR-1221-1
 R.T.: 4.235 min
 Delta R.T.: -0.007 min
 Response: 51112
 Conc: 165.84 ng/ml

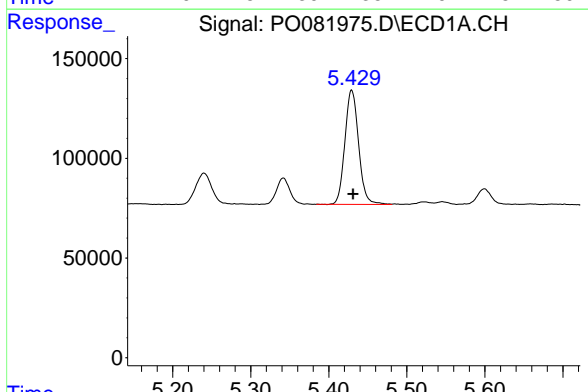


#9 AR-1221-2
 R.T.: 5.342 min
 Delta R.T.: -0.002 min
 Response: 152997
 Conc: 236.98 ng/ml

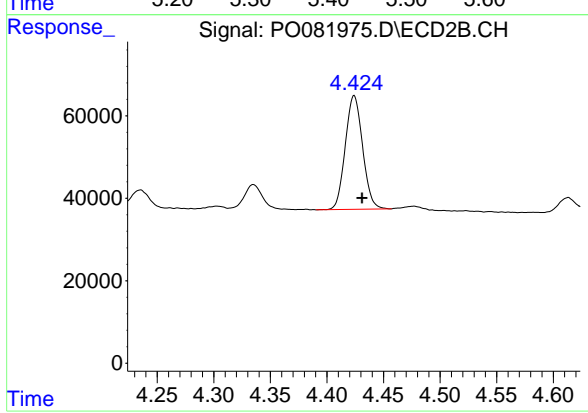
Instrument :
 ECD_O
 ClientSampleId :



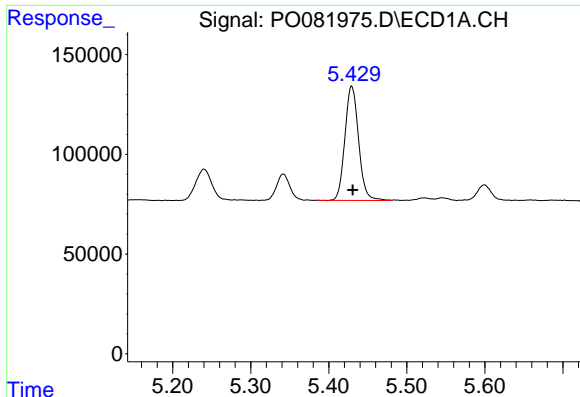
#9 AR-1221-2
 R.T.: 4.335 min
 Delta R.T.: -0.007 min
 Response: 66628
 Conc: 286.25 ng/ml



#10 AR-1221-3
 R.T.: 5.429 min
 Delta R.T.: -0.002 min
 Response: 698125
 Conc: 327.38 ng/ml



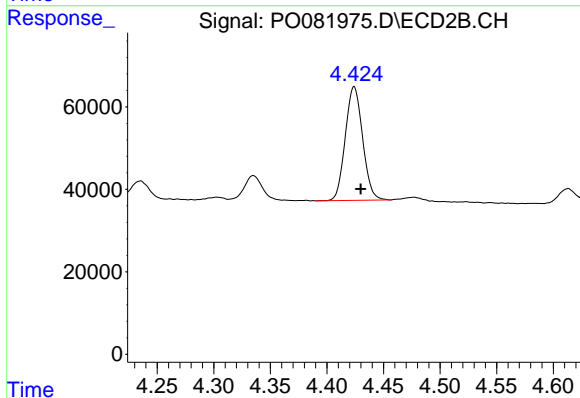
#10 AR-1221-3
 R.T.: 4.424 min
 Delta R.T.: -0.007 min
 Response: 293836
 Conc: 389.65 ng/ml



#11 AR-1232-1

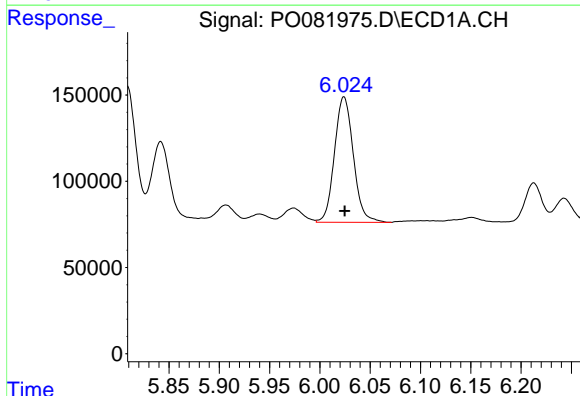
R.T.: 5.429 min
 Delta R.T.: -0.001 min
 Response: 698125
 Conc: 418.55 ng/ml

Instrument :
 ECD_O
 ClientSampleId :



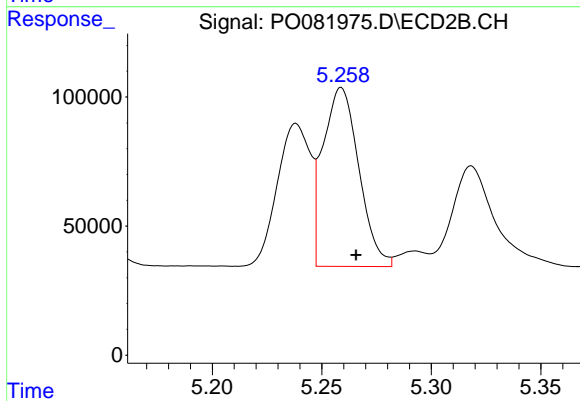
#11 AR-1232-1

R.T.: 4.424 min
 Delta R.T.: -0.006 min
 Response: 293836
 Conc: 495.45 ng/ml



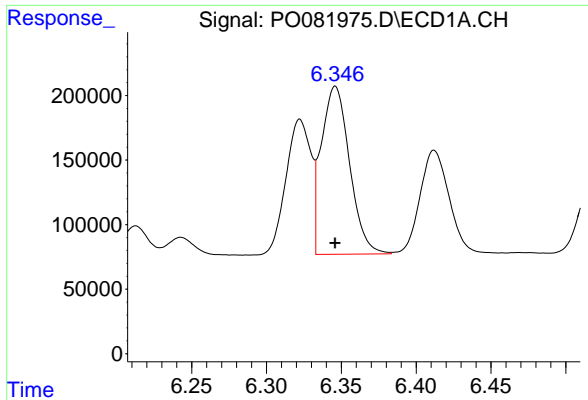
#12 AR-1232-2

R.T.: 6.024 min
 Delta R.T.: 0.000 min
 Response: 950235
 Conc: 1001.66 ng/ml



#12 AR-1232-2

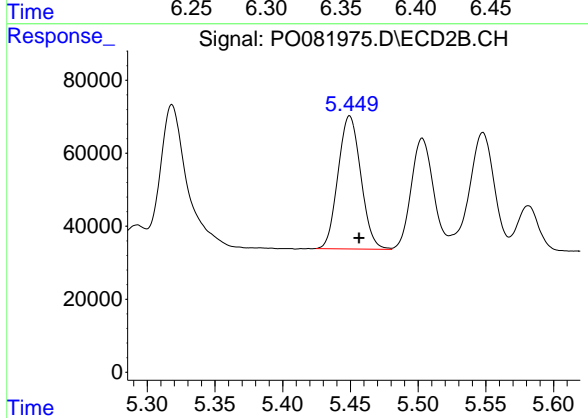
R.T.: 5.259 min
 Delta R.T.: -0.007 min
 Response: 788908
 Conc: 1301.82 ng/ml



#13 AR-1232-3

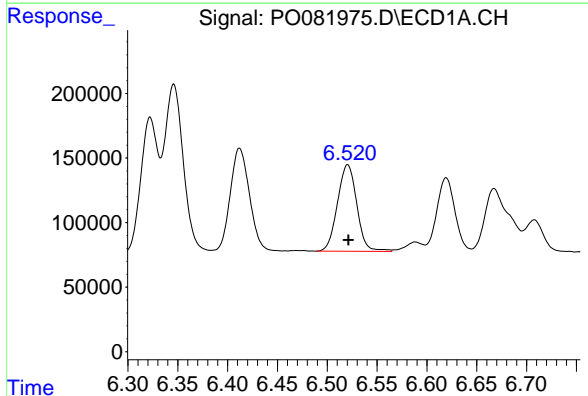
R.T.: 6.346 min
 Delta R.T.: 0.000 min
 Response: 1714052
 Conc: 1025.68 ng/ml

Instrument :
 ECD_O
 ClientSampleId :



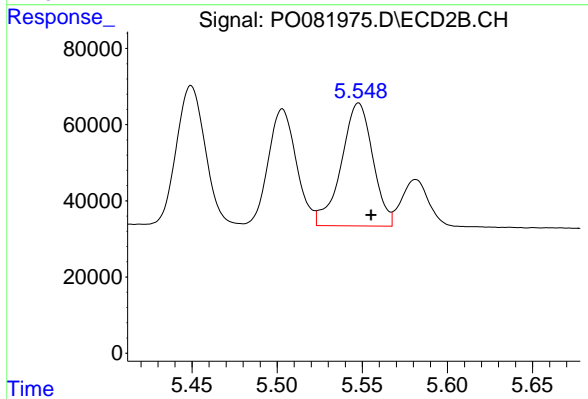
#13 AR-1232-3

R.T.: 5.449 min
 Delta R.T.: -0.007 min
 Response: 426663
 Conc: 1339.46 ng/ml



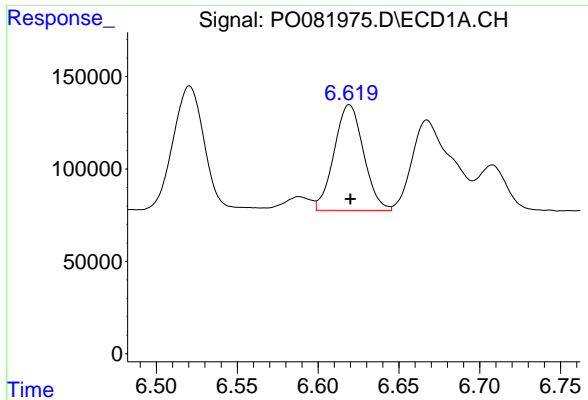
#14 AR-1232-4

R.T.: 6.521 min
 Delta R.T.: 0.000 min
 Response: 903476
 Conc: 1094.65 ng/ml



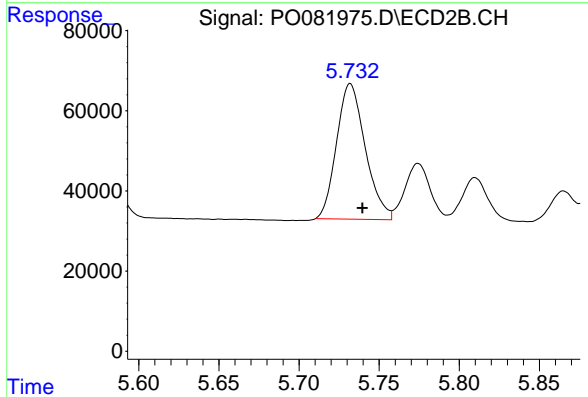
#14 AR-1232-4

R.T.: 5.548 min
 Delta R.T.: -0.007 min
 Response: 415530
 Conc: 1351.92 ng/ml

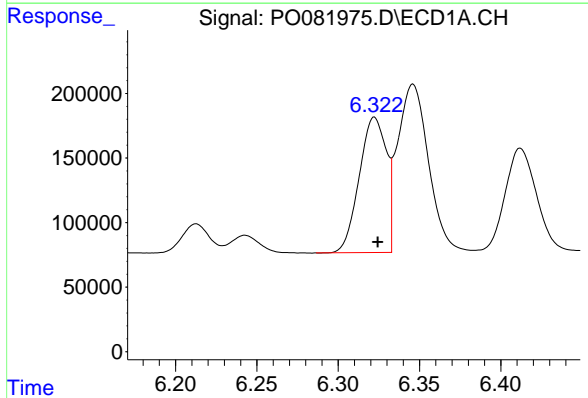


#15 AR-1232-5
 R.T.: 6.619 min
 Delta R.T.: 0.000 min
 Response: 724641
 Conc: 1200.15 ng/ml

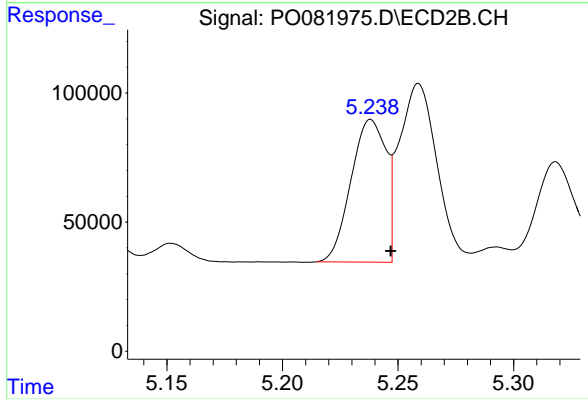
Instrument :
 ECD_O
 ClientSampleId :



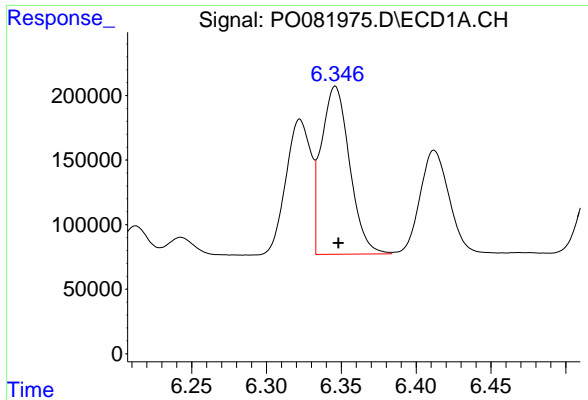
#15 AR-1232-5
 R.T.: 5.732 min
 Delta R.T.: -0.007 min
 Response: 421711
 Conc: 1358.59 ng/ml



#16 AR-1242-1
 R.T.: 6.322 min
 Delta R.T.: -0.002 min
 Response: 1218886
 Conc: 592.70 ng/ml



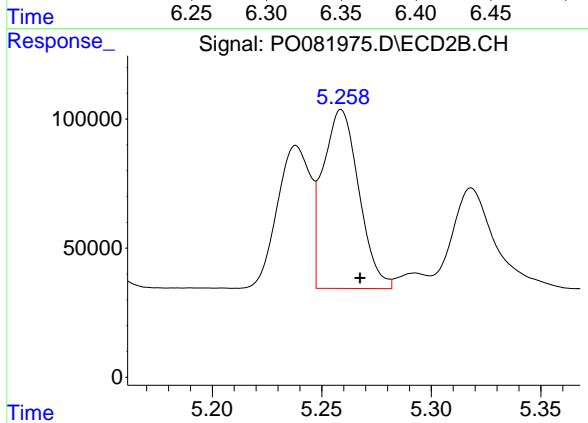
#16 AR-1242-1
 R.T.: 5.238 min
 Delta R.T.: -0.009 min
 Response: 581026
 Conc: 752.49 ng/ml



#17 AR-1242-2

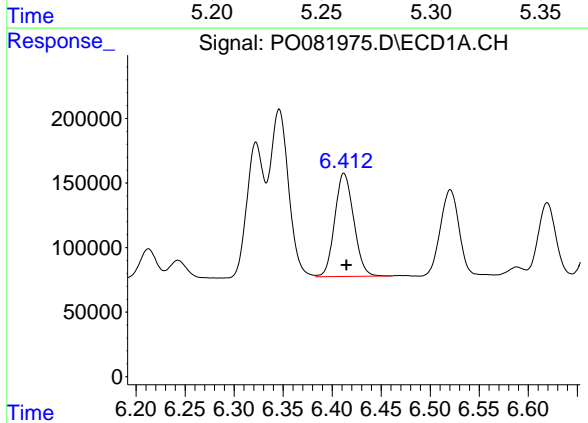
R.T.: 6.346 min
 Delta R.T.: -0.002 min
 Response: 1714052
 Conc: 584.75 ng/ml

Instrument :
 ECD_O
 ClientSampleId :



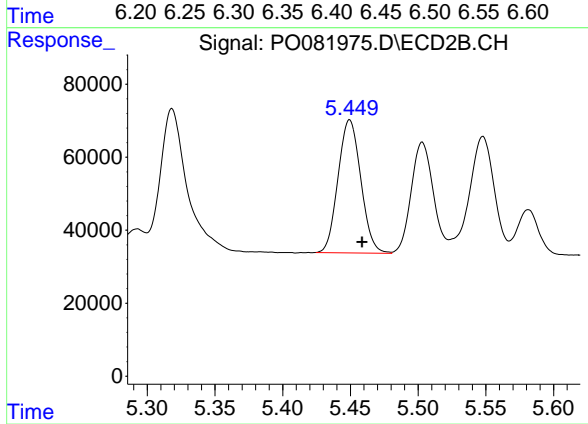
#17 AR-1242-2

R.T.: 5.259 min
 Delta R.T.: -0.009 min
 Response: 788908
 Conc: 747.22 ng/ml



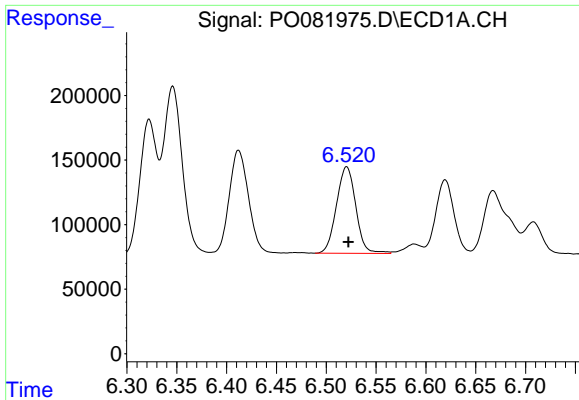
#18 AR-1242-3

R.T.: 6.412 min
 Delta R.T.: -0.003 min
 Response: 1078118
 Conc: 591.20 ng/ml



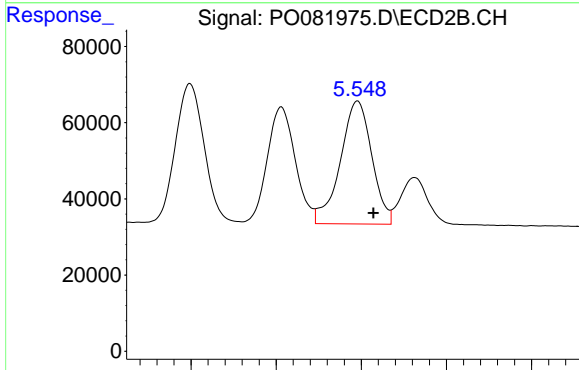
#18 AR-1242-3

R.T.: 5.449 min
 Delta R.T.: -0.009 min
 Response: 426663
 Conc: 755.33 ng/ml

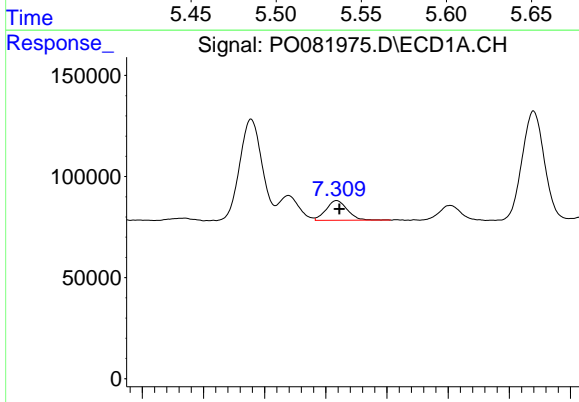


#19 AR-1242-4
 R.T.: 6.521 min
 Delta R.T.: -0.002 min
 Response: 903476
 Conc: 634.04 ng/ml

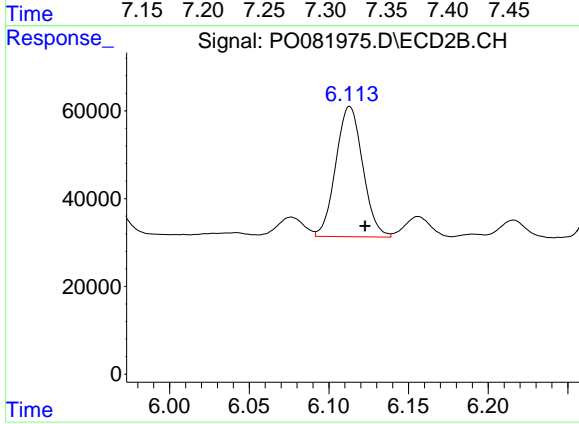
Instrument :
 ECD_O
 ClientSampleId :



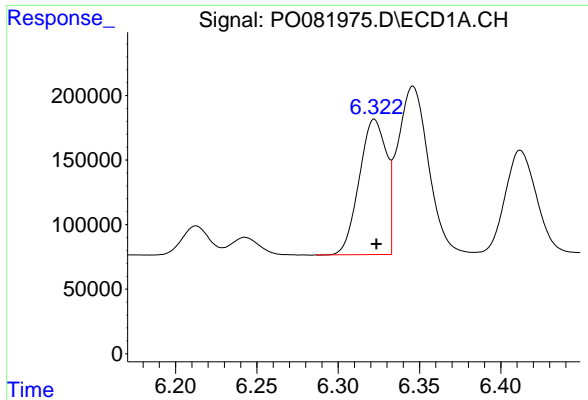
#19 AR-1242-4
 R.T.: 5.548 min
 Delta R.T.: -0.009 min
 Response: 415530
 Conc: 666.68 ng/ml



#20 AR-1242-5
 R.T.: 7.309 min
 Delta R.T.: -0.002 min
 Response: 117310
 Conc: 80.36 ng/ml



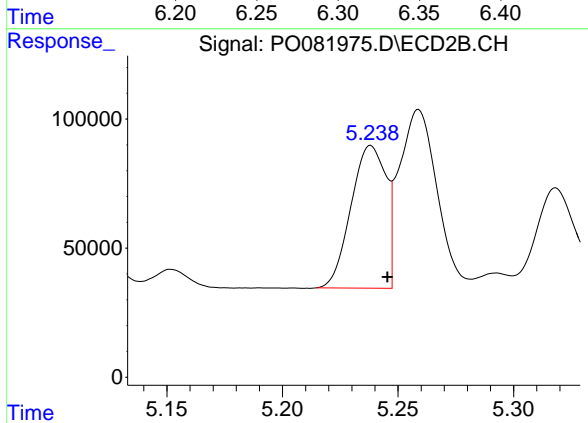
#20 AR-1242-5
 R.T.: 6.113 min
 Delta R.T.: -0.010 min
 Response: 349351
 Conc: 478.77 ng/ml



#21 AR-1248-1

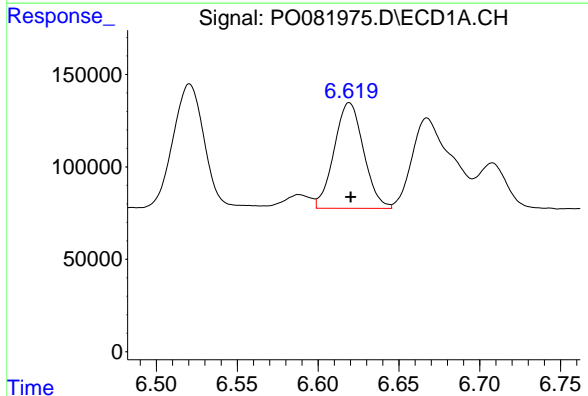
R.T.: 6.322 min
 Delta R.T.: -0.001 min
 Response: 1218886
 Conc: 733.76 ng/ml

Instrument :
 ECD_O
 ClientSampleId :



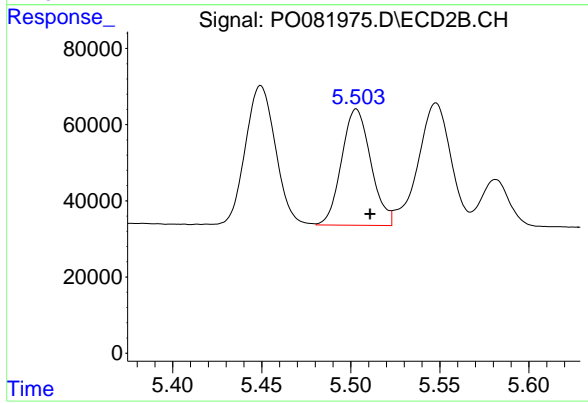
#21 AR-1248-1

R.T.: 5.238 min
 Delta R.T.: -0.007 min
 Response: 581026
 Conc: 953.49 ng/ml



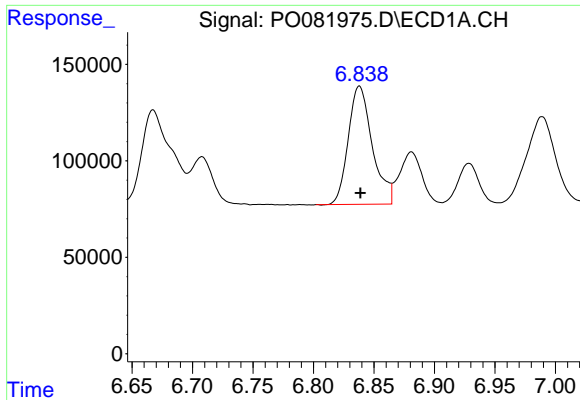
#22 AR-1248-2

R.T.: 6.619 min
 Delta R.T.: 0.000 min
 Response: 724641
 Conc: 330.00 ng/ml



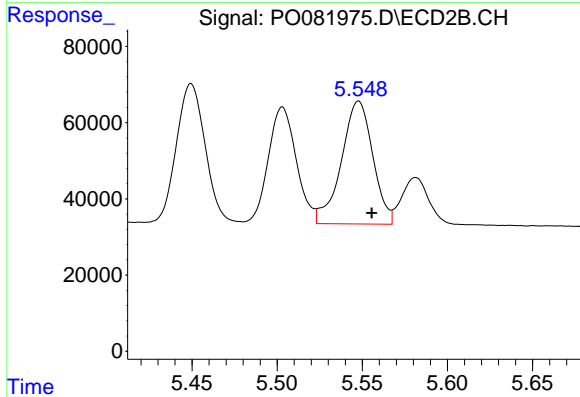
#22 AR-1248-2

R.T.: 5.503 min
 Delta R.T.: -0.008 min
 Response: 349281
 Conc: 413.74 ng/ml

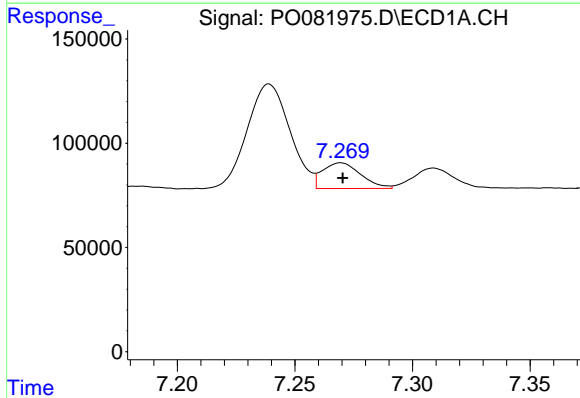


#23 AR-1248-3
 R.T.: 6.838 min
 Delta R.T.: 0.000 min
 Response: 847111
 Conc: 345.16 ng/ml

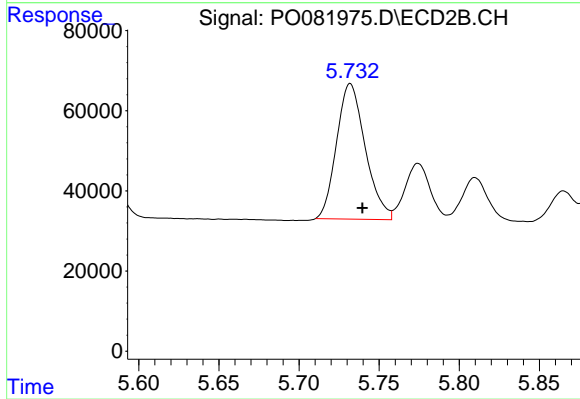
Instrument :
 ECD_O
 ClientSampleId :



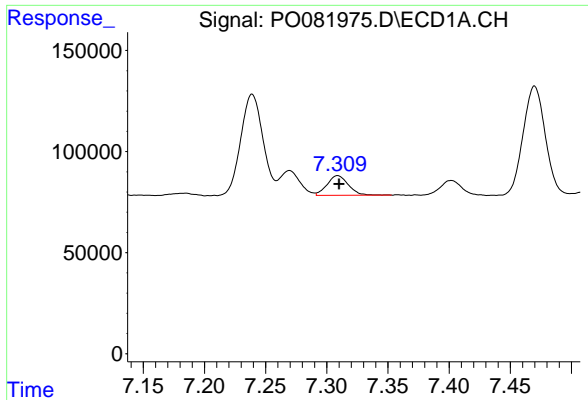
#23 AR-1248-3
 R.T.: 5.548 min
 Delta R.T.: -0.008 min
 Response: 415530
 Conc: 464.35 ng/ml



#24 AR-1248-4
 R.T.: 7.270 min
 Delta R.T.: 0.000 min
 Response: 139605
 Conc: 53.35 ng/ml



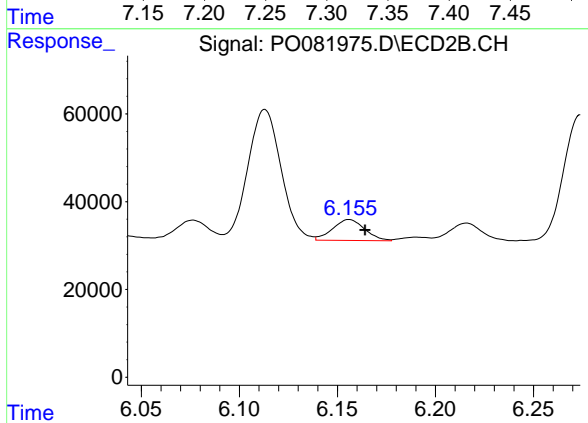
#24 AR-1248-4
 R.T.: 5.732 min
 Delta R.T.: -0.007 min
 Response: 421711
 Conc: 423.85 ng/ml



#25 AR-1248-5

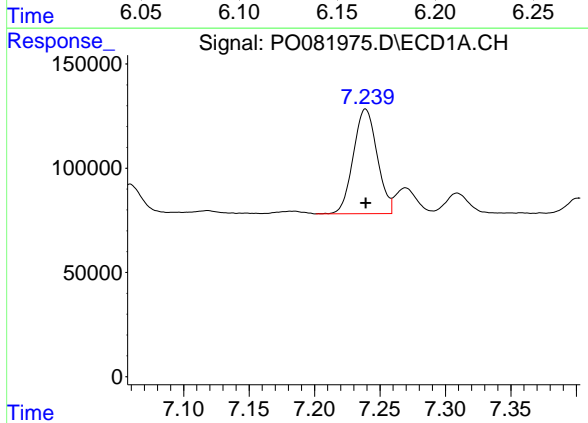
R.T.: 7.309 min
 Delta R.T.: -0.001 min
 Response: 117310
 Conc: 47.08 ng/ml

Instrument :
 ECD_O
 ClientSampled :



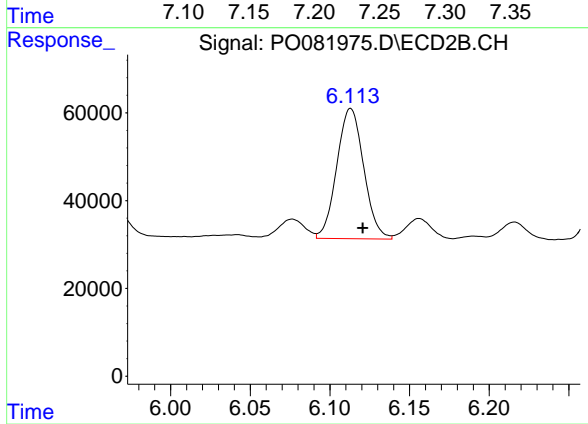
#25 AR-1248-5

R.T.: 6.156 min
 Delta R.T.: -0.008 min
 Response: 54624
 Conc: 57.27 ng/ml



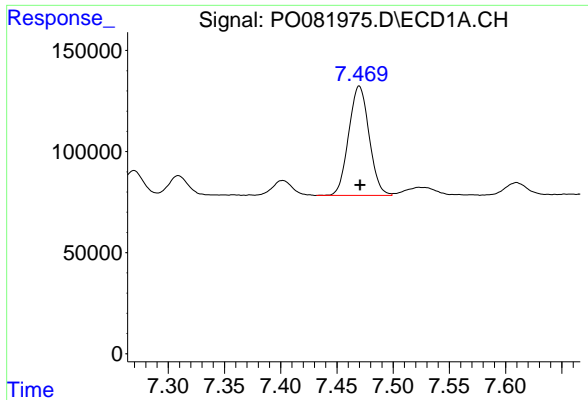
#26 AR-1254-1

R.T.: 7.239 min
 Delta R.T.: 0.000 min
 Response: 636475
 Conc: 232.66 ng/ml



#26 AR-1254-1

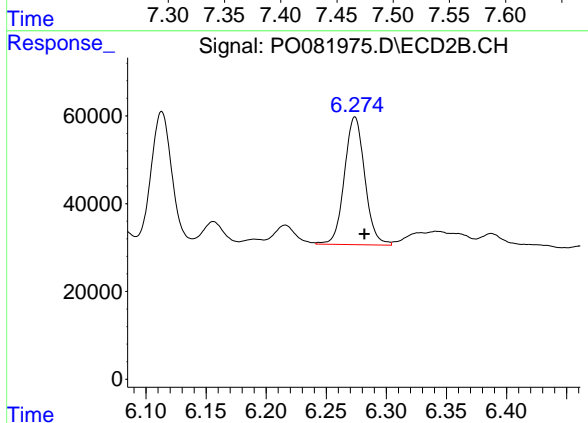
R.T.: 6.113 min
 Delta R.T.: -0.008 min
 Response: 349351
 Conc: 243.44 ng/ml



#27 AR-1254-2

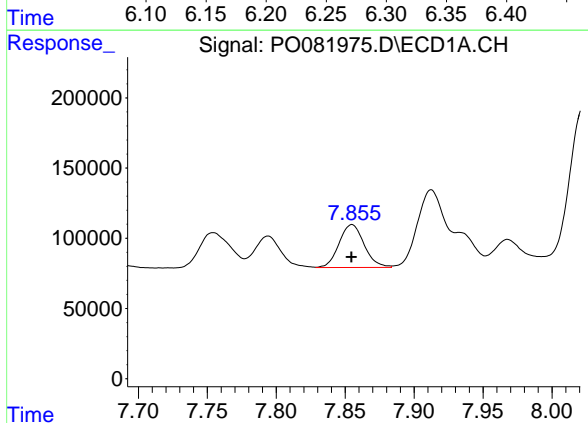
R.T.: 7.470 min
 Delta R.T.: 0.000 min
 Response: 684350
 Conc: 167.74 ng/ml

Instrument :
 ECD_O
 ClientSampleId :



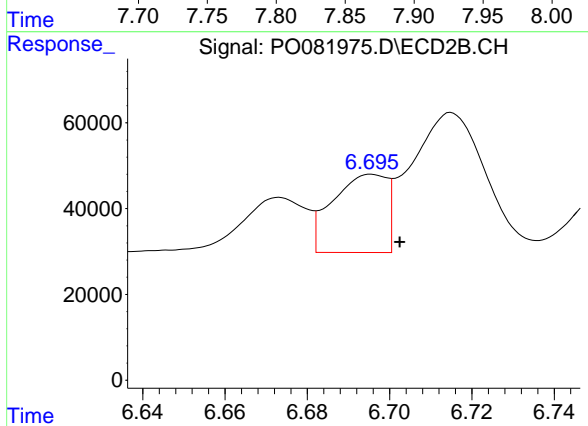
#27 AR-1254-2

R.T.: 6.274 min
 Delta R.T.: -0.008 min
 Response: 343119
 Conc: 264.64 ng/ml



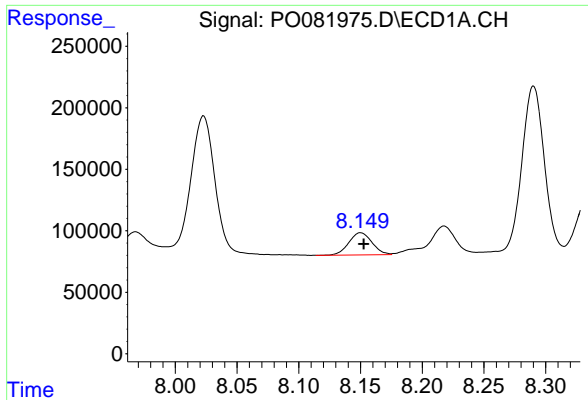
#28 AR-1254-3

R.T.: 7.855 min
 Delta R.T.: 0.000 min
 Response: 386676
 Conc: 94.77 ng/ml



#28 AR-1254-3

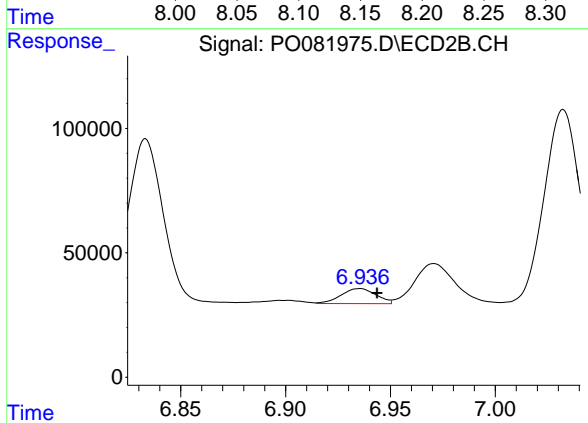
R.T.: 6.696 min
 Delta R.T.: -0.007 min
 Response: 166518
 Conc: 83.61 ng/ml



#29 AR-1254-4

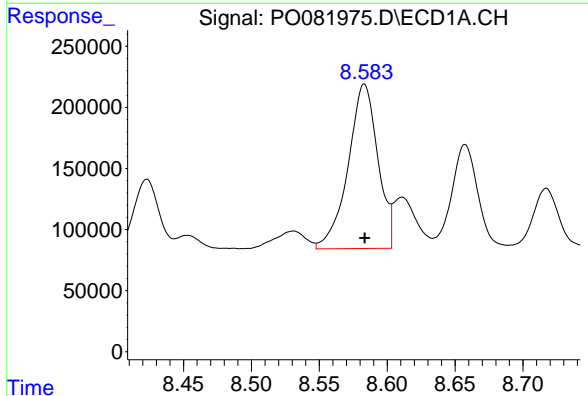
R.T.: 8.150 min
 Delta R.T.: -0.003 min
 Response: 236865
 Conc: 78.98 ng/ml

Instrument :
 ECD_O
 ClientSampleId :



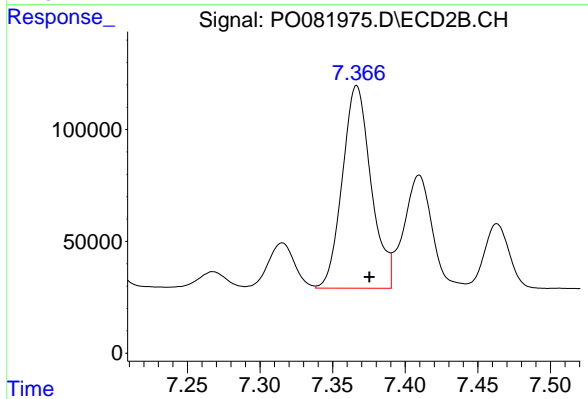
#29 AR-1254-4

R.T.: 6.935 min
 Delta R.T.: -0.008 min
 Response: 69836
 Conc: 54.68 ng/ml



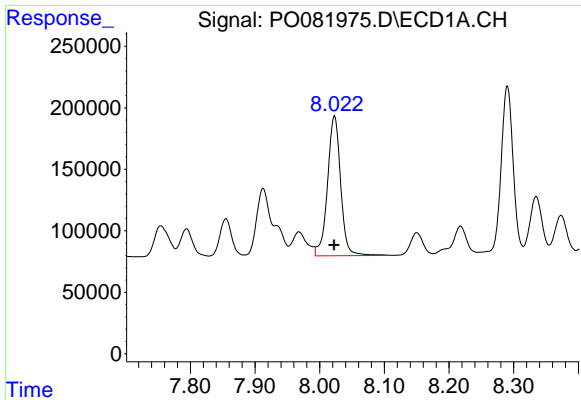
#30 AR-1254-5

R.T.: 8.583 min
 Delta R.T.: 0.000 min
 Response: 2051771
 Conc: 628.45 ng/ml



#30 AR-1254-5

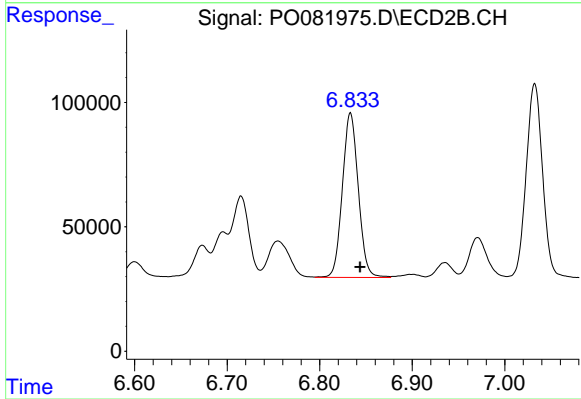
R.T.: 7.367 min
 Delta R.T.: -0.009 min
 Response: 1245797
 Conc: 688.45 ng/ml



#31 AR-1260-1

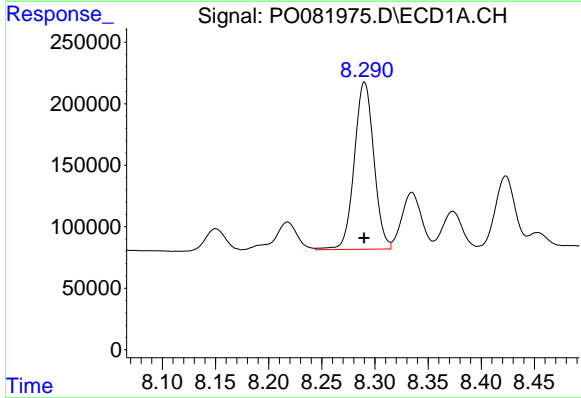
R.T.: 8.023 min
 Delta R.T.: 0.000 min
 Response: 1605984
 Conc: 511.50 ng/ml

Instrument :
 ECD_O
 ClientSampled :



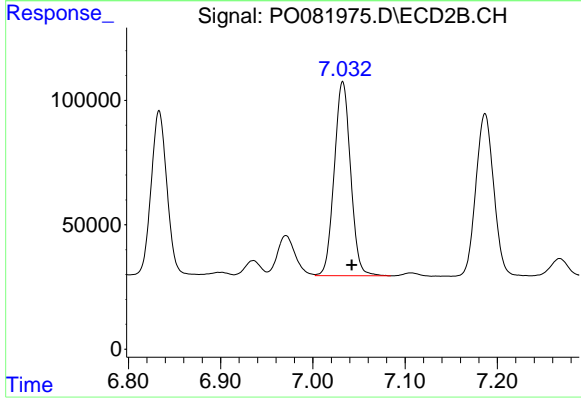
#31 AR-1260-1

R.T.: 6.833 min
 Delta R.T.: -0.010 min
 Response: 789580
 Conc: 548.45 ng/ml



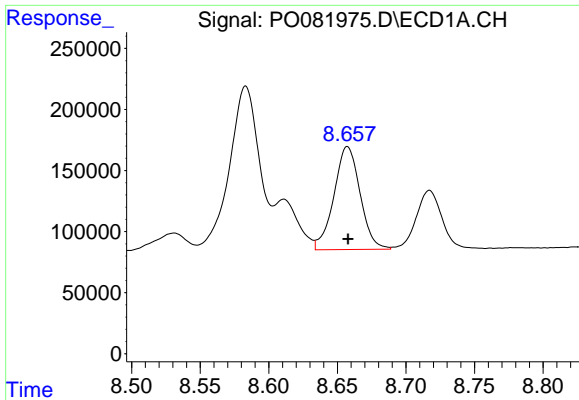
#32 AR-1260-2

R.T.: 8.290 min
 Delta R.T.: 0.000 min
 Response: 1740373
 Conc: 471.25 ng/ml



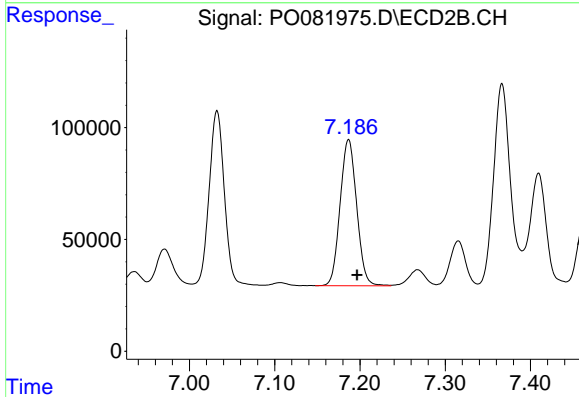
#32 AR-1260-2

R.T.: 7.032 min
 Delta R.T.: -0.010 min
 Response: 959748
 Conc: 555.89 ng/ml

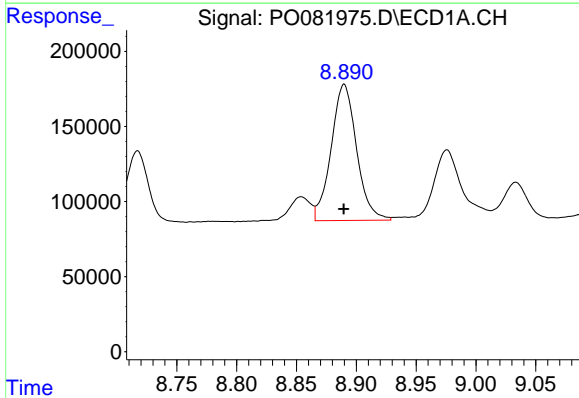


#33 AR-1260-3
 R.T.: 8.657 min
 Delta R.T.: 0.000 min
 Response: 1122079
 Conc: 453.83 ng/ml

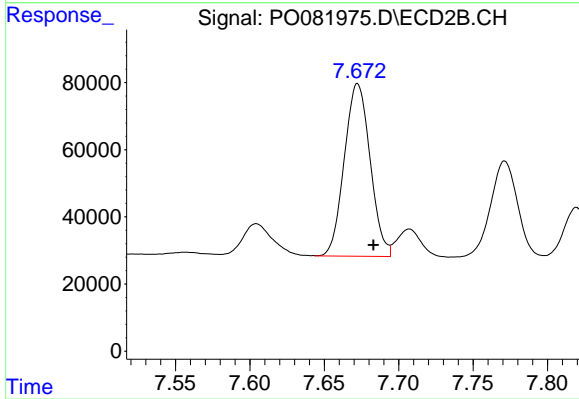
Instrument :
 ECD_O
 ClientSampled :



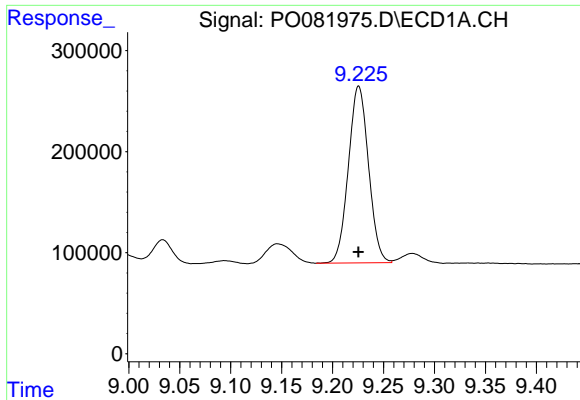
#33 AR-1260-3
 R.T.: 7.187 min
 Delta R.T.: -0.010 min
 Response: 882771
 Conc: 539.81 ng/ml



#34 AR-1260-4
 R.T.: 8.890 min
 Delta R.T.: 0.000 min
 Response: 1341765
 Conc: 449.41 ng/ml



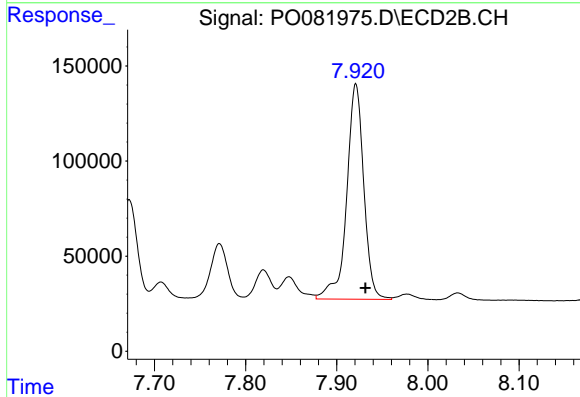
#34 AR-1260-4
 R.T.: 7.672 min
 Delta R.T.: -0.010 min
 Response: 620676
 Conc: 516.23 ng/ml



#35 AR-1260-5

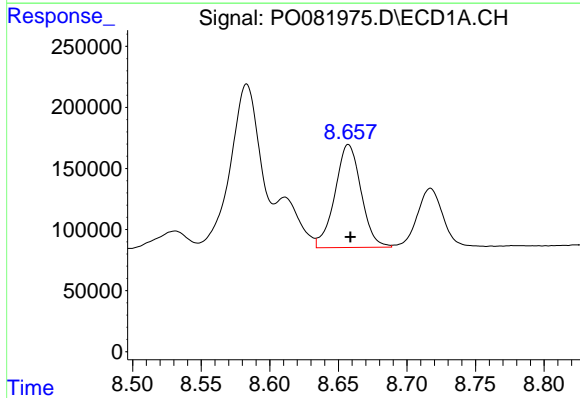
R.T.: 9.226 min
 Delta R.T.: 0.000 min
 Response: 2407292
 Conc: 412.20 ng/ml

Instrument :
 ECD_O
 ClientSampleId :



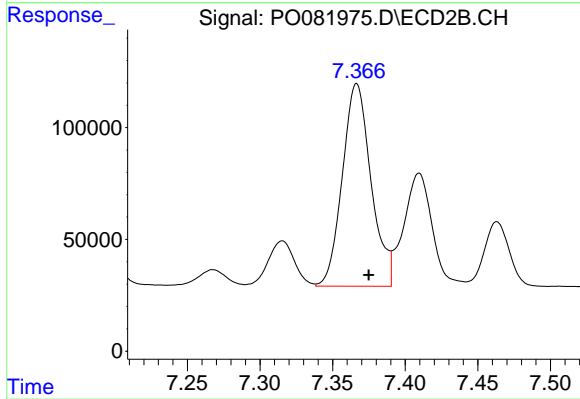
#35 AR-1260-5

R.T.: 7.921 min
 Delta R.T.: -0.011 min
 Response: 1477872
 Conc: 522.37 ng/ml



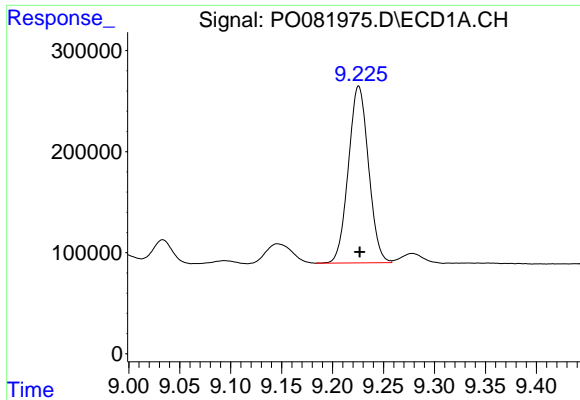
#36 AR-1262-1

R.T.: 8.657 min
 Delta R.T.: -0.001 min
 Response: 1122079
 Conc: 285.38 ng/ml



#36 AR-1262-1

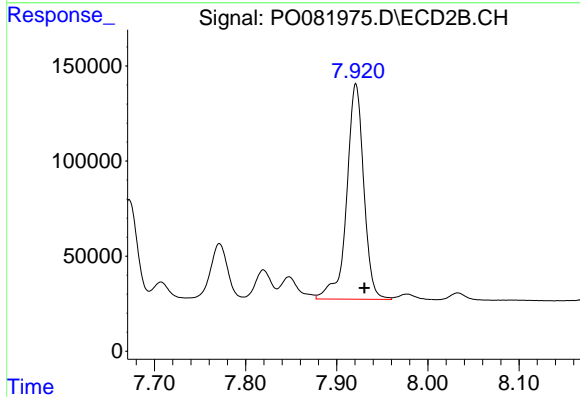
R.T.: 7.367 min
 Delta R.T.: -0.008 min
 Response: 1245797
 Conc: 1246.59 ng/ml



#37 AR-1262-2

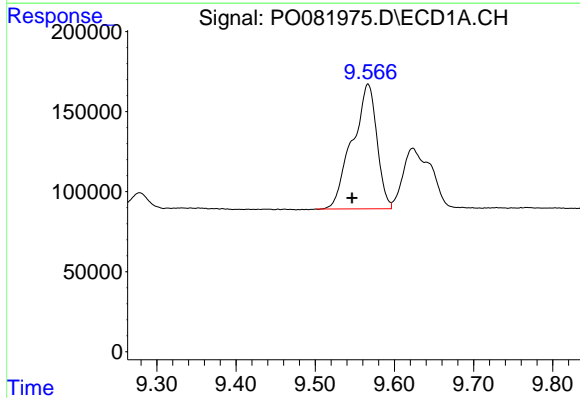
R.T.: 9.226 min
 Delta R.T.: -0.001 min
 Response: 2407292
 Conc: 348.30 ng/ml

Instrument :
 ECD_O
 ClientSampled :



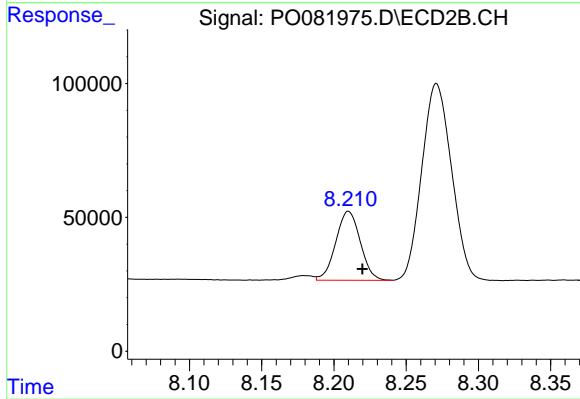
#37 AR-1262-2

R.T.: 7.921 min
 Delta R.T.: -0.009 min
 Response: 1477872
 Conc: 458.77 ng/ml



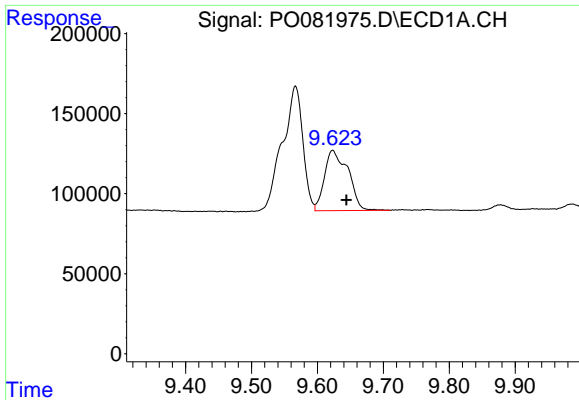
#38 AR-1262-3

R.T.: 9.567 min
 Delta R.T.: 0.020 min
 Response: 1681841
 Conc: 494.85 ng/ml



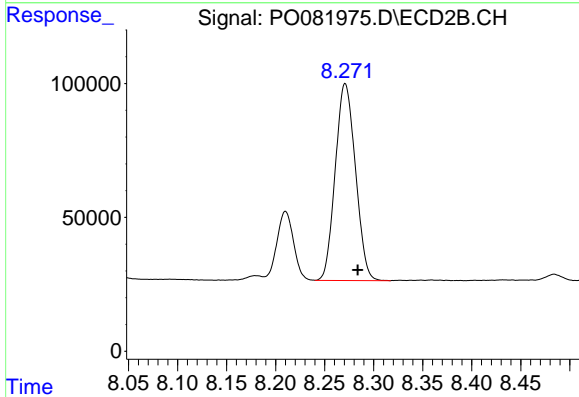
#38 AR-1262-3

R.T.: 8.210 min
 Delta R.T.: -0.010 min
 Response: 304784
 Conc: 228.29 ng/ml

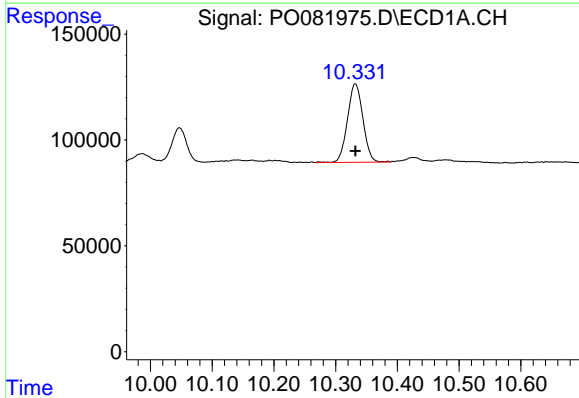


#39 AR-1262-4
 R.T.: 9.623 min
 Delta R.T.: -0.021 min
 Response: 936480
 Conc: 463.58 ng/ml

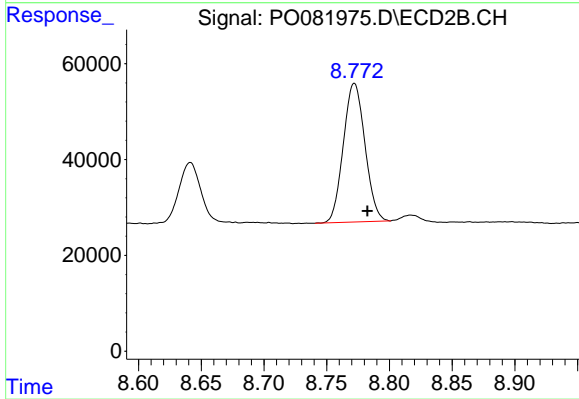
Instrument :
 ECD_O
 ClientSampled :



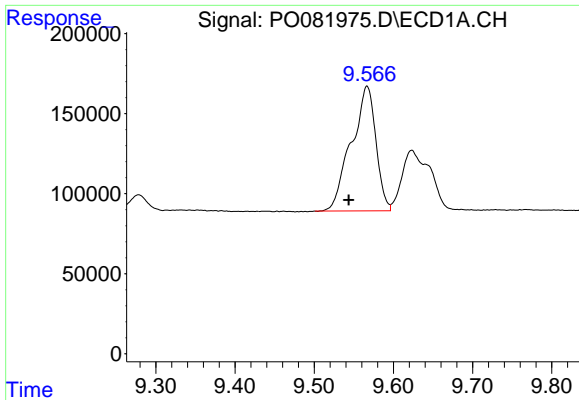
#39 AR-1262-4
 R.T.: 8.271 min
 Delta R.T.: -0.013 min
 Response: 1054862
 Conc: 438.22 ng/ml



#40 AR-1262-5
 R.T.: 10.332 min
 Delta R.T.: 0.000 min
 Response: 645364
 Conc: 250.16 ng/ml



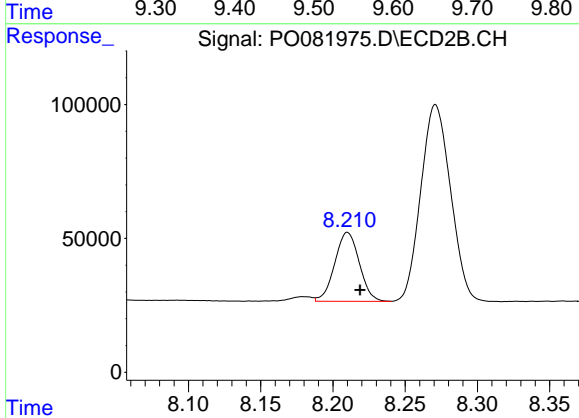
#40 AR-1262-5
 R.T.: 8.772 min
 Delta R.T.: -0.010 min
 Response: 347299
 Conc: 302.65 ng/ml



#41 AR-1268-1

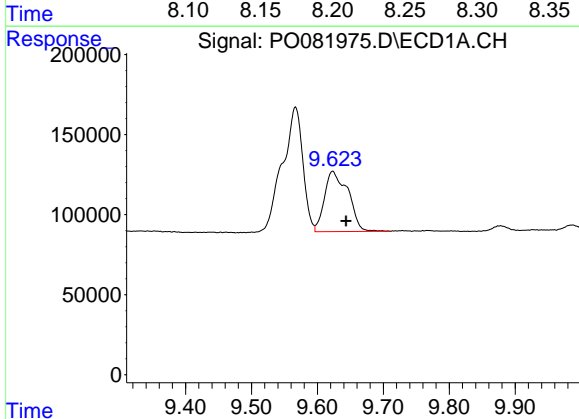
R.T.: 9.567 min
 Delta R.T.: 0.023 min
 Response: 1681841
 Conc: 195.17 ng/ml

Instrument :
 ECD_O
 ClientSampled :



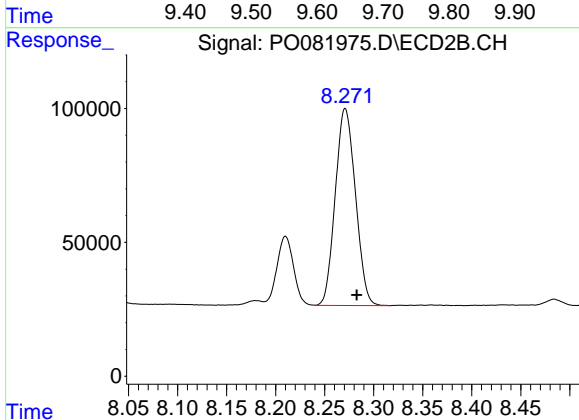
#41 AR-1268-1

R.T.: 8.210 min
 Delta R.T.: -0.009 min
 Response: 304784
 Conc: 77.44 ng/ml



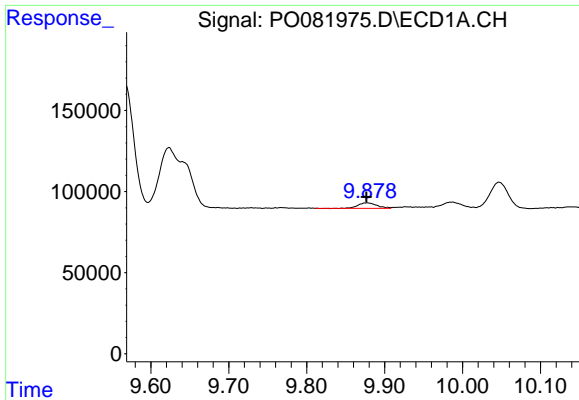
#42 AR-1268-2

R.T.: 9.623 min
 Delta R.T.: -0.020 min
 Response: 936480
 Conc: 118.98 ng/ml



#42 AR-1268-2

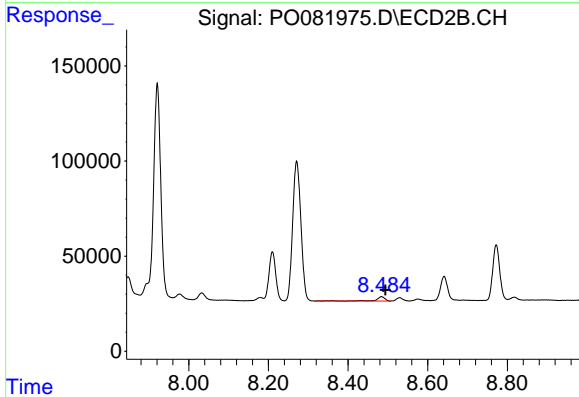
R.T.: 8.271 min
 Delta R.T.: -0.012 min
 Response: 1054862
 Conc: 298.00 ng/ml



#43 AR-1268-3

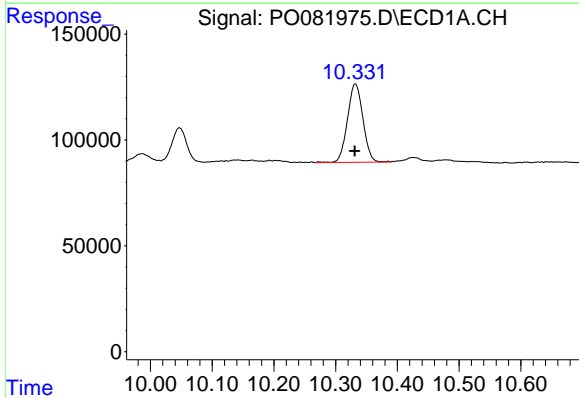
R.T.: 9.878 min
 Delta R.T.: 0.001 min
 Response: 56478
 Conc: 8.27 ng/ml

Instrument :
 ECD_O
 ClientSampled :



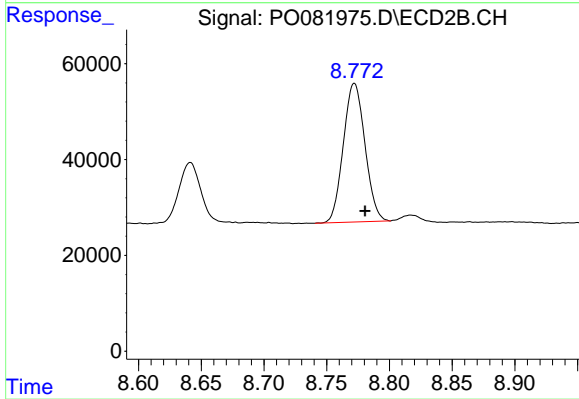
#43 AR-1268-3

R.T.: 8.484 min
 Delta R.T.: -0.010 min
 Response: 40163
 Conc: 13.38 ng/ml



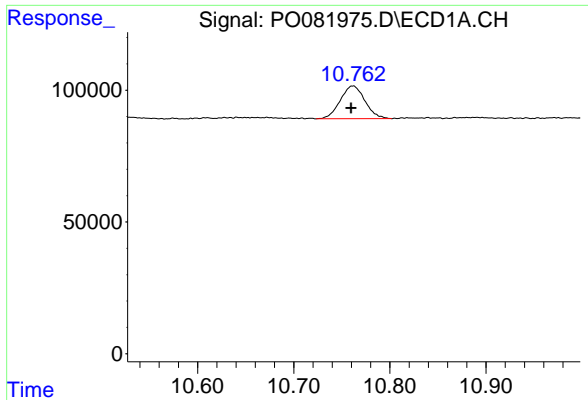
#44 AR-1268-4

R.T.: 10.332 min
 Delta R.T.: 0.001 min
 Response: 645364
 Conc: 216.10 ng/ml



#44 AR-1268-4

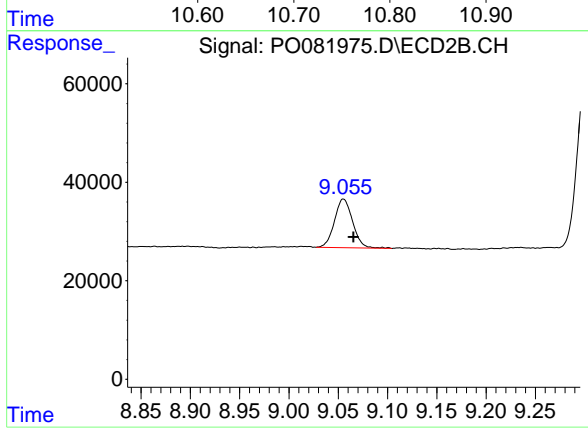
R.T.: 8.772 min
 Delta R.T.: -0.008 min
 Response: 347299
 Conc: 264.07 ng/ml



#45 AR-1268-5

R.T.: 10.762 min
Delta R.T.: 0.002 min
Response: 222083
Conc: 9.98 ng/ml

Instrument :
ECD_O
ClientSampleId :



#45 AR-1268-5

R.T.: 9.055 min
Delta R.T.: -0.010 min
Response: 126539
Conc: 13.80 ng/ml