

Data Path : Z:\pestpcbsrv\HPCHEM1\ECD\_0\Data\PO101121\  
 Data File : PO081991.D  
 Signal(s) : Signal #1: ECD1A.CH Signal #2: ECD2B.CH  
 Acq On : 11 Oct 2021 22:41  
 Operator : AJ\MA  
 Sample : M4170-03  
 Misc :  
 ALS Vial : 34 Sample Multiplier: 1

Instrument :  
 ECD\_O  
 ClientSampled :

Integration File signal 1: autoint1.e  
 Integration File signal 2: autoint2.e  
 Quant Time: Oct 12 02:38:20 2021  
 Quant Method : Z:\pestpcbsrv\HPCHEM1\ECD\_0\methods\PO100621.M  
 Quant Title : GC EXTRACTABLES  
 QLast Update : Thu Oct 07 09:43:36 2021  
 Response via : Initial Calibration  
 Integrator: ChemStation 6890 Scale Mode: Small noise peaks clipped

Volume Inj. : 2 µl  
 Signal #1 Phase : ZB-MR1 Signal #2 Phase: ZB-MR2  
 Signal #1 Info : 30Mx0.32mmx 0.50µ Signal #2 Info : 30M x 0.32mm x 0.25µm

Compound	RT#1	RT#2	Resp#1	Resp#2	ng/ml	ng/ml
System Monitoring Compounds						
1) SA Tetrachlo...	4.988	3.976	1060644	557949	12.782	22.050 #
2) SA Decachlor...	11.109	9.302	1013485	635340	17.087	26.895 #
Target Compounds						
3) L1 AR-1016-1	0.000	5.279f	0	131591	N.D.	126.785 #
4) L1 AR-1016-2	6.358	5.279	-125773	131591	N.D.	91.839 #
5) L1 AR-1016-3	6.389f	5.466	112423	234306	45.660	306.650 #
6) L1 AR-1016-4	0.000	5.519	0	44169	N.D.	69.091 #
7) L1 AR-1016-5	6.830	5.749	422114	46580	223.166	59.942 #
8) L2 AR-1221-1	5.230	0.000	1254193	0	1313.314	N.D. #
9) L2 AR-1221-2	5.352	4.334	1006693	55765	1559.270	239.581 #
10) L2 AR-1221-3	5.448f	4.423	769564	677356	360.879	898.235 #
11) L3 AR-1232-1	5.448f	4.423	769564	677356	461.380	1142.108 #
12) L3 AR-1232-2	6.053f	5.279	502091	131591	529.262	217.147 #
13) L3 AR-1232-3	6.358	5.466	-125773	234306	N.D.	735.580 #
14) L3 AR-1232-4	0.000	5.576f	0	211511	N.D.	688.147 #
15) L3 AR-1232-5	6.610	5.749	179159	46580	296.724	150.062 #
16) L4 AR-1242-1	0.000	5.279f	0	131591	N.D.	170.424 #
17) L4 AR-1242-2	6.358	5.279	-125773	131591	N.D.	124.637 #
18) L4 AR-1242-3	6.389f	5.466	112423	234306	61.649	414.798 #
19) L4 AR-1242-4	0.000	5.576f	0	211511	N.D.	339.350 #
20) L4 AR-1242-5	7.301	6.137	2627535	151080	1799.956	207.046 #
21) L5 AR-1248-1	0.000	5.279f	0	131591	N.D.	215.948 #
22) L5 AR-1248-2	6.610	5.519	179159	44169	81.587	52.320 #
23) L5 AR-1248-3	6.830	5.576	422114	211511	171.994	236.362 #
24) L5 AR-1248-4	7.247f	5.749	1194080	46580	456.297	46.816 #
25) L5 AR-1248-5	7.301	6.137f	2627535	151080	1054.443	158.396 #
26) L6 AR-1254-1	7.247	6.137f	1194080	151080	436.485	105.277 #
27) L6 AR-1254-2	7.482	6.309f	1213497	179045	297.435	138.094 #
28) L6 AR-1254-3	7.872f	6.687f	815447	150950	199.852	75.789 #
29) L6 AR-1254-4	8.146	6.964f	368098	660273	122.737	516.957 #
30) L6 AR-1254-5	0.000	7.367	0	273700	N.D.	151.251 #
31) L7 AR-1260-1	8.004f	0.000	1375304	0	438.028	N.D. #
32) L7 AR-1260-2	8.311f	7.057f	1186669	465180	321.322	269.432
33) L7 AR-1260-3	8.658	7.190	305738	1275186	123.656	779.763 #
34) L7 AR-1260-4	0.000	7.708f	0	209981	N.D.	174.647 #
35) L7 AR-1260-5	0.000	7.941	0	163518	N.D.	57.797 #
36) L8 AR-1262-1	8.658	7.367	305738	273700	77.760	273.874 #
37) L8 AR-1262-2	0.000	7.941	0	163518	N.D.	50.761 #
38) L8 AR-1262-3	9.545	8.204f	77437	129422	22.784	96.942 #
41) L9 AR-1268-1	9.545	8.204f	77437	129422	8.986	32.886 #
43) L9 AR-1268-3	9.862	8.512f	135390	245308	19.814	81.743 #
45) L9 AR-1268-5	0.000	9.061	0	61465	N.D.	6.705 #

Data Path : Z:\pestpcbsrv\HPCHEM1\ECD\_0\Data\PO101121\  
 Data File : PO081991.D  
 Signal(s) : Signal #1: ECD1A.CH Signal #2: ECD2B.CH  
 Acq On : 11 Oct 2021 22:41  
 Operator : AJ\MA  
 Sample : M4170-03  
 Misc :  
 ALS Vial : 34 Sample Multiplier: 1

Instrument :  
 ECD\_0  
 ClientSampleId :

Integration File signal 1: autoint1.e  
 Integration File signal 2: autoint2.e  
 Quant Time: Oct 12 02:38:20 2021  
 Quant Method : Z:\pestpcbsrv\HPCHEM1\ECD\_0\methods\PO100621.M  
 Quant Title : GC EXTRACTABLES  
 QLast Update : Thu Oct 07 09:43:36 2021  
 Response via : Initial Calibration  
 Integrator: ChemStation 6890 Scale Mode: Small noise peaks clipped

Volume Inj. : 2 µl  
 Signal #1 Phase : ZB-MR1 Signal #2 Phase: ZB-MR2  
 Signal #1 Info : 30Mx0.32mmx 0.50µ Signal #2 Info : 30M x 0.32mm x 0.25µm

Compound	RT#1	RT#2	Resp#1	Resp#2	ng/ml	ng/ml
-----						
-----						

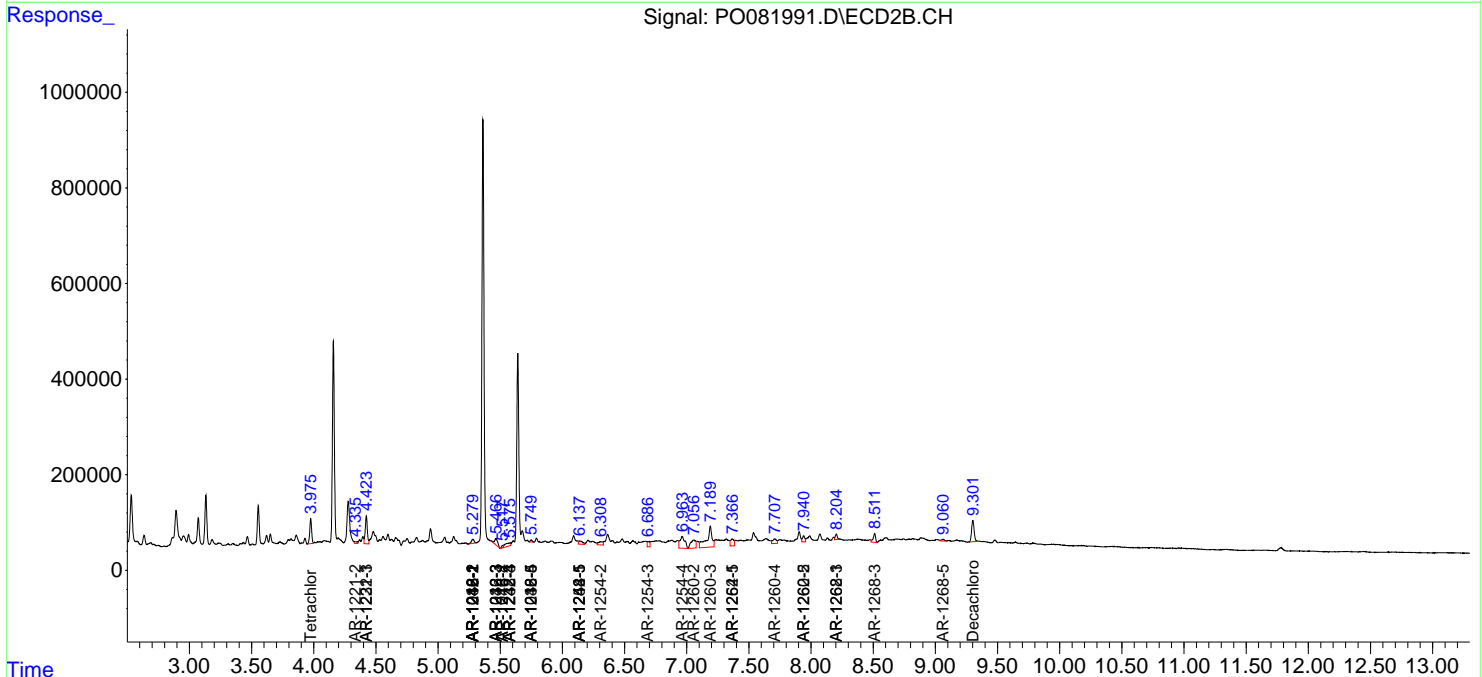
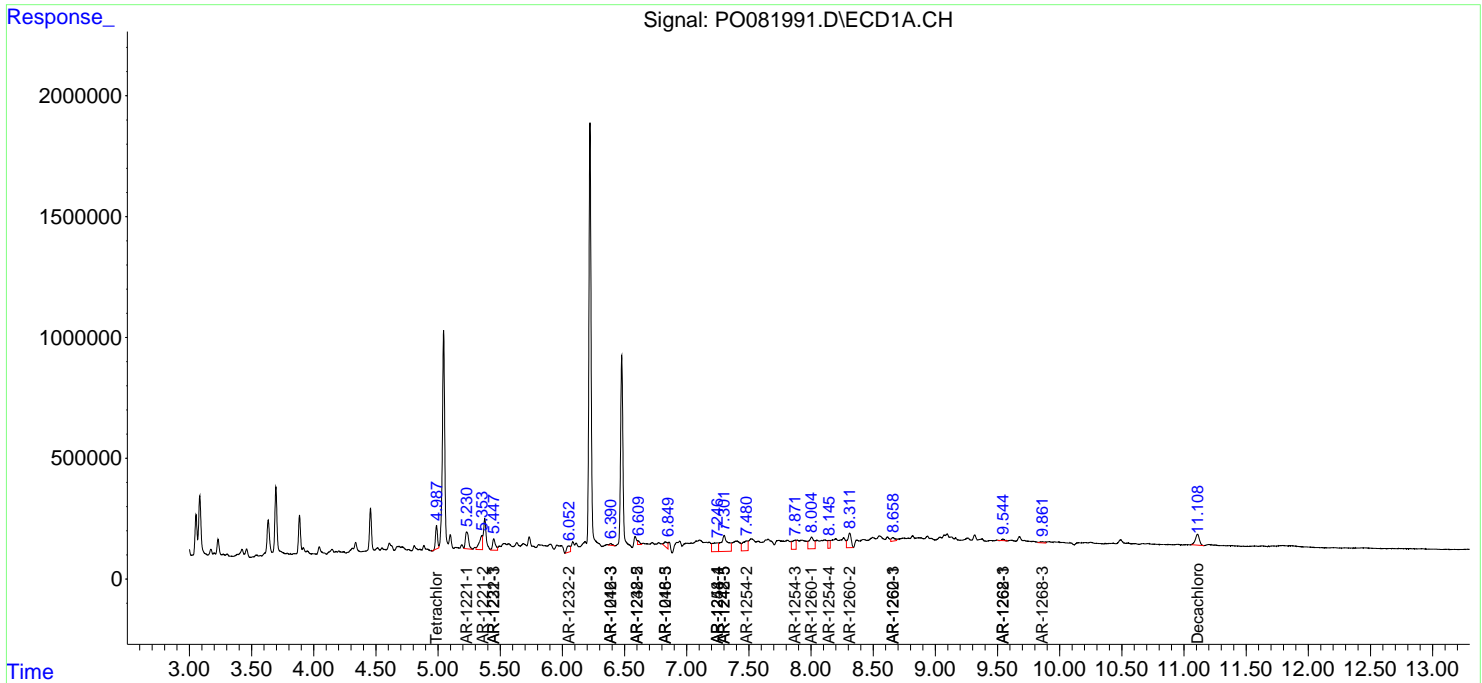
(f)=RT Delta > 1/2 Window (#)=Amounts differ by > 25% (m)=manual int.

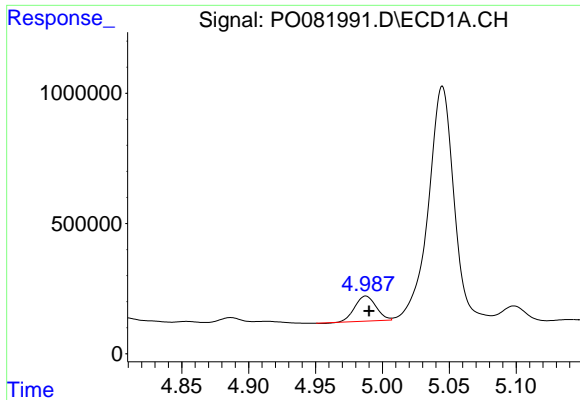
Data Path : Z:\pestpcbsrv\HPCHEM1\ECD\_O\Data\PO101121\  
 Data File : PO081991.D  
 Signal(s) : Signal #1: ECD1A.CH Signal #2: ECD2B.CH  
 Acq On : 11 Oct 2021 22:41  
 Operator : AJ\MA  
 Sample : M4170-03  
 Misc :  
 ALS Vial : 34 Sample Multiplier: 1

Instrument :  
 ECD\_O  
 ClientSampled :

Integration File signal 1: autoint1.e  
 Integration File signal 2: autoint2.e  
 Quant Time: Oct 12 02:38:20 2021  
 Quant Method : Z:\pestpcbsrv\HPCHEM1\ECD\_O\methods\PO100621.M  
 Quant Title : GC EXTRACTABLES  
 QLast Update : Thu Oct 07 09:43:36 2021  
 Response via : Initial Calibration  
 Integrator: ChemStation 6890 Scale Mode: Small noise peaks clipped

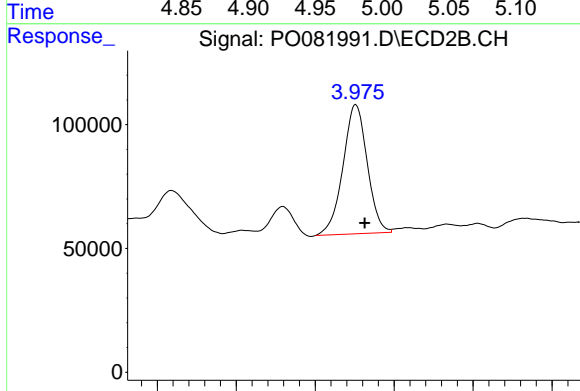
Volume Inj. : 2 µl  
 Signal #1 Phase : ZB-MR1 Signal #2 Phase: ZB-MR2  
 Signal #1 Info : 30Mx0.32mmx 0.50µ Signal #2 Info : 30M x 0.32mm x 0.25µm



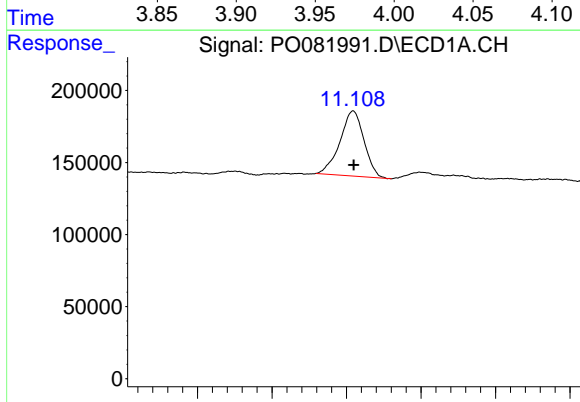


#1 Tetrachloro-m-xylene  
 R.T.: 4.988 min  
 Delta R.T.: -0.002 min  
 Response: 1060644  
 Conc: 12.78 ng/ml

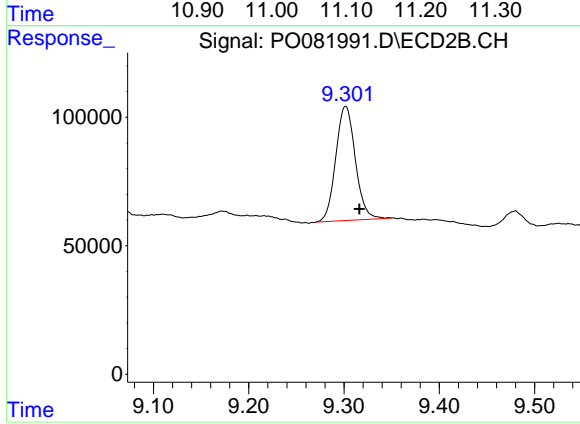
Instrument :  
 ECD\_O  
 ClientSampled :



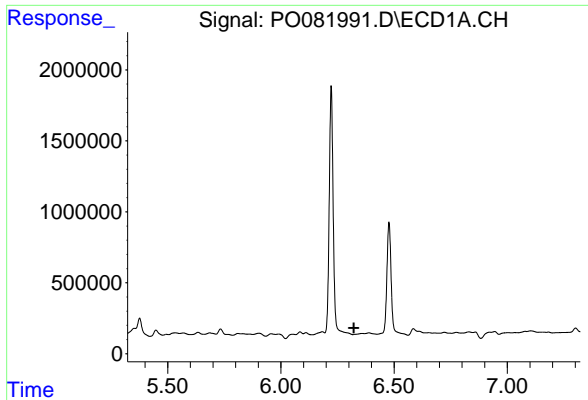
#1 Tetrachloro-m-xylene  
 R.T.: 3.976 min  
 Delta R.T.: -0.006 min  
 Response: 557949  
 Conc: 22.05 ng/ml



#2 Decachlorobiphenyl  
 R.T.: 11.109 min  
 Delta R.T.: 0.000 min  
 Response: 1013485  
 Conc: 17.09 ng/ml

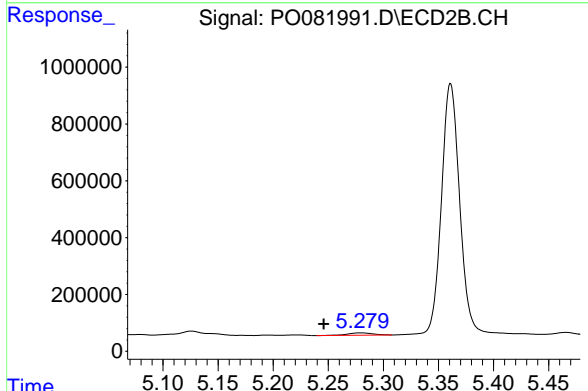


#2 Decachlorobiphenyl  
 R.T.: 9.302 min  
 Delta R.T.: -0.014 min  
 Response: 635340  
 Conc: 26.89 ng/ml

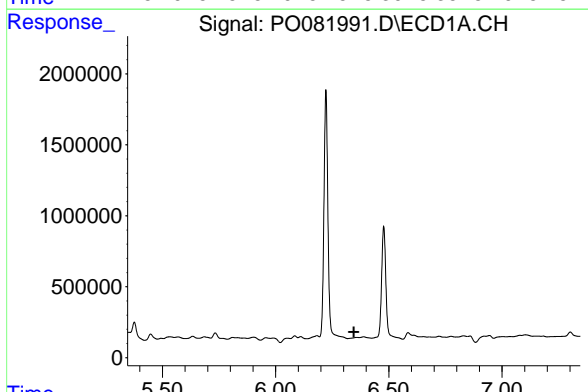


#3 AR-1016-1  
 R.T.: 0.000 min  
 Exp R.T.: 6.322 min  
 Response: 0  
 Conc: N.D.

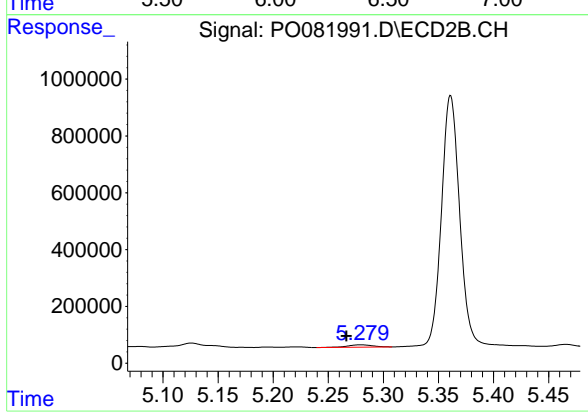
Instrument :  
 ECD\_O  
 ClientSampled :



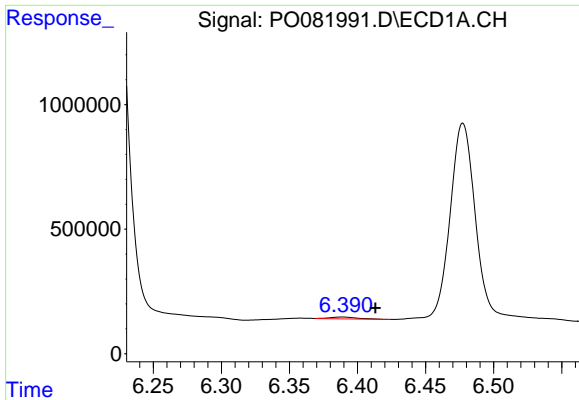
#3 AR-1016-1  
 R.T.: 5.279 min  
 Delta R.T.: 0.033 min  
 Response: 131591  
 Conc: 126.78 ng/ml



#4 AR-1016-2  
 R.T.: 6.358 min  
 Delta R.T.: 0.012 min  
 Response: -125773  
 Conc: N.D.



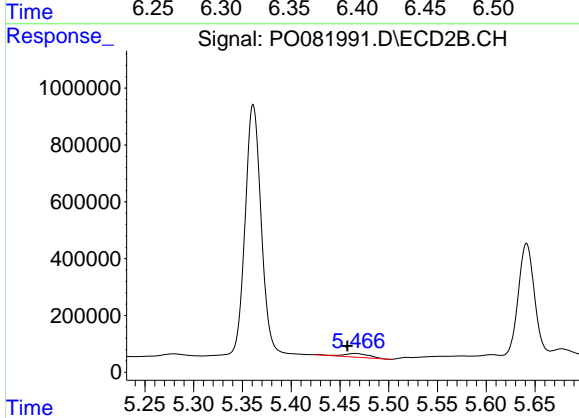
#4 AR-1016-2  
 R.T.: 5.279 min  
 Delta R.T.: 0.013 min  
 Response: 131591  
 Conc: 91.84 ng/ml



#5 AR-1016-3

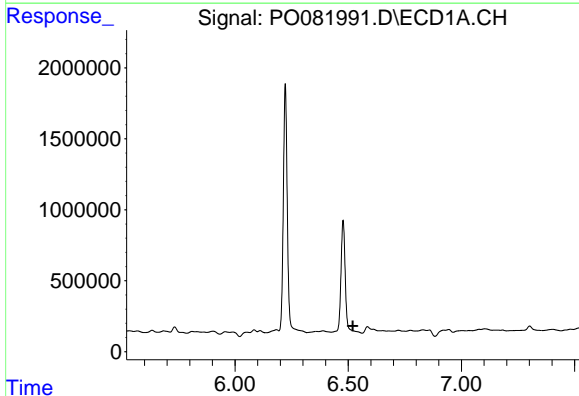
R.T.: 6.389 min  
 Delta R.T.: -0.024 min  
 Response: 112423  
 Conc: 45.66 ng/ml

Instrument :  
 ECD\_O  
 ClientSampled :



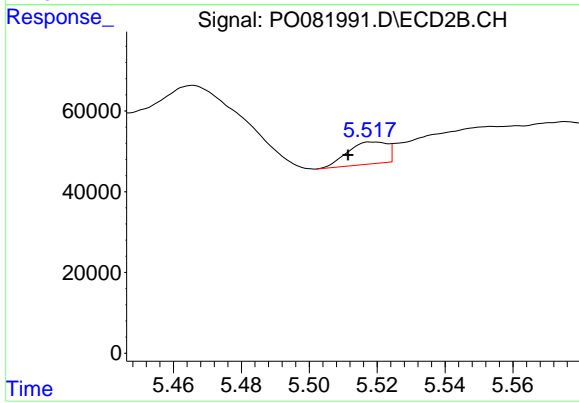
#5 AR-1016-3

R.T.: 5.466 min  
 Delta R.T.: 0.008 min  
 Response: 234306  
 Conc: 306.65 ng/ml



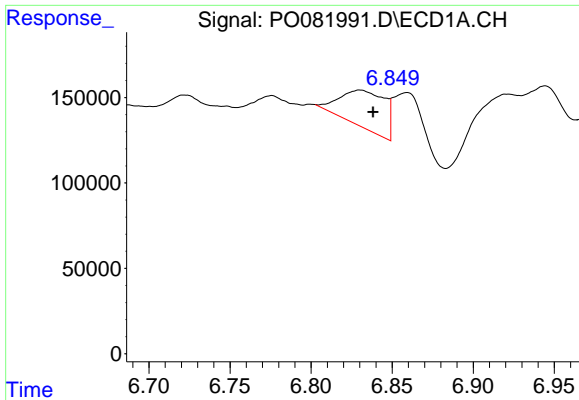
#6 AR-1016-4

R.T.: 0.000 min  
 Exp R.T. : 6.521 min  
 Response: 0  
 Conc: N.D.



#6 AR-1016-4

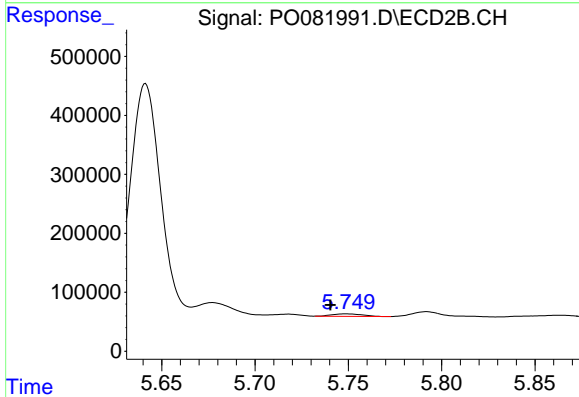
R.T.: 5.519 min  
 Delta R.T.: 0.007 min  
 Response: 44169  
 Conc: 69.09 ng/ml



#7 AR-1016-5

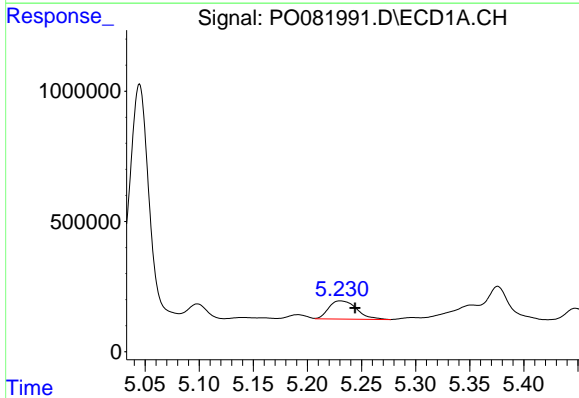
R.T.: 6.830 min  
 Delta R.T.: -0.008 min  
 Response: 422114  
 Conc: 223.17 ng/ml

Instrument :  
 ECD\_O  
 ClientSampleId :



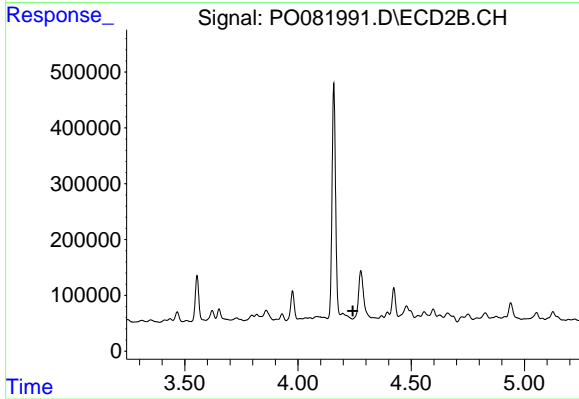
#7 AR-1016-5

R.T.: 5.749 min  
 Delta R.T.: 0.008 min  
 Response: 46580  
 Conc: 59.94 ng/ml



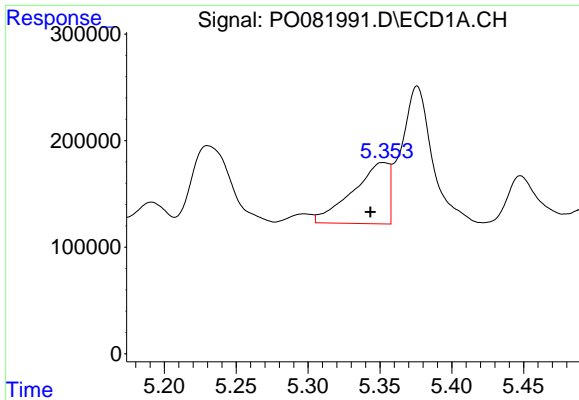
#8 AR-1221-1

R.T.: 5.230 min  
 Delta R.T.: -0.014 min  
 Response: 1254193  
 Conc: 1313.31 ng/ml



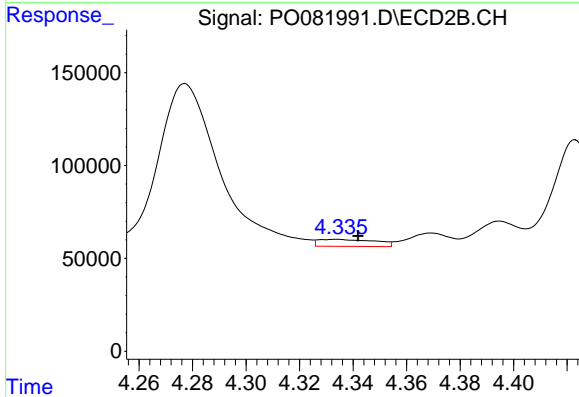
#8 AR-1221-1

R.T.: 0.000 min  
 Exp R.T. : 4.243 min  
 Response: 0  
 Conc: N.D.

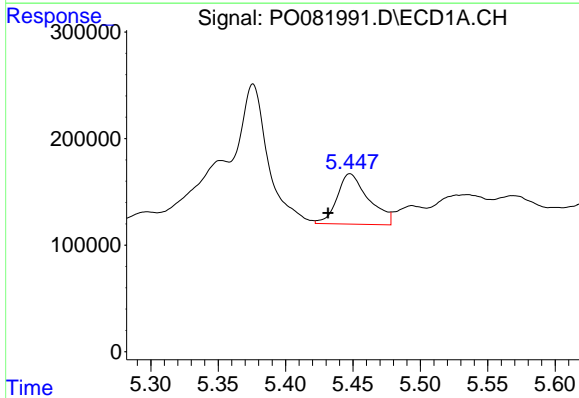


#9 AR-1221-2  
 R.T.: 5.352 min  
 Delta R.T.: 0.009 min  
 Response: 1006693  
 Conc: 1559.27 ng/ml

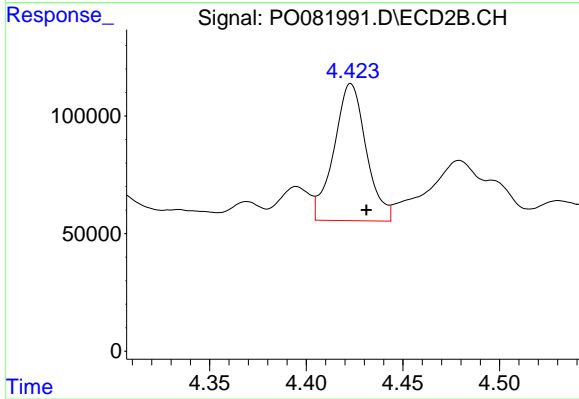
Instrument :  
 ECD\_O  
 ClientSampleId :



#9 AR-1221-2  
 R.T.: 4.334 min  
 Delta R.T.: -0.008 min  
 Response: 55765  
 Conc: 239.58 ng/ml

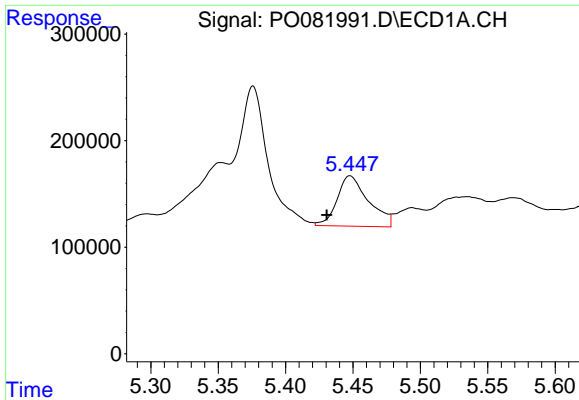


#10 AR-1221-3  
 R.T.: 5.448 min  
 Delta R.T.: 0.016 min  
 Response: 769564  
 Conc: 360.88 ng/ml



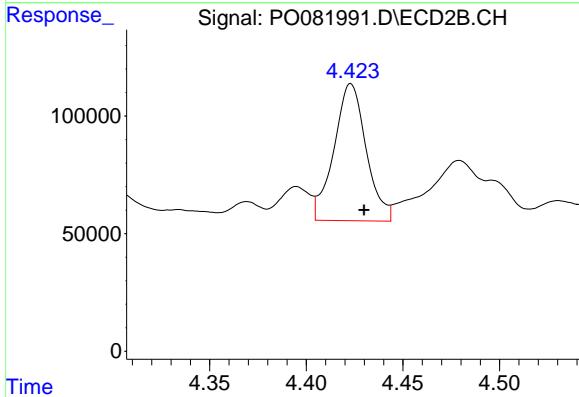
#10 AR-1221-3  
 R.T.: 4.423 min  
 Delta R.T.: -0.008 min  
 Response: 677356  
 Conc: 898.24 ng/ml



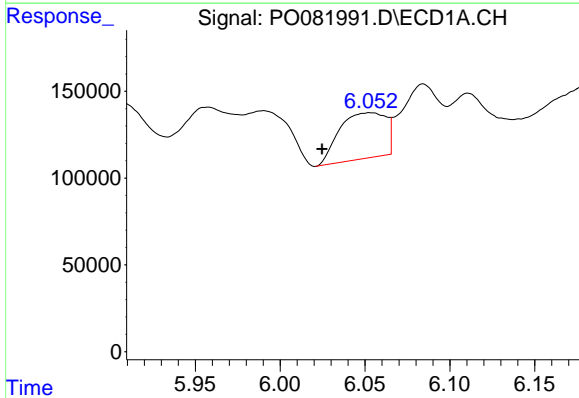


#11 AR-1232-1  
 R.T.: 5.448 min  
 Delta R.T.: 0.017 min  
 Response: 769564  
 Conc: 461.38 ng/ml

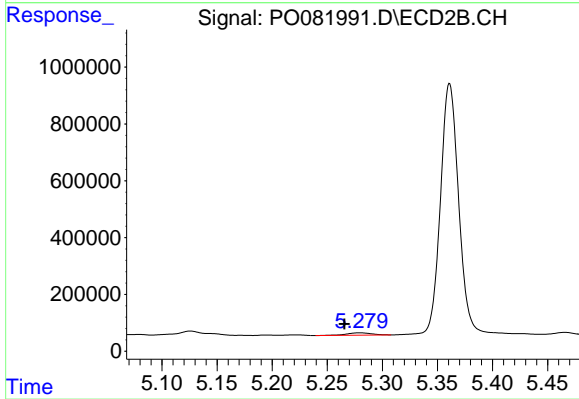
Instrument :  
 ECD\_O  
 ClientSampleId :



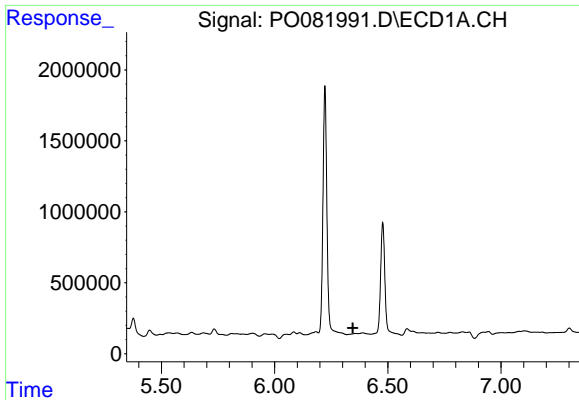
#11 AR-1232-1  
 R.T.: 4.423 min  
 Delta R.T.: -0.007 min  
 Response: 677356  
 Conc: 1142.11 ng/ml



#12 AR-1232-2  
 R.T.: 6.053 min  
 Delta R.T.: 0.029 min  
 Response: 502091  
 Conc: 529.26 ng/ml



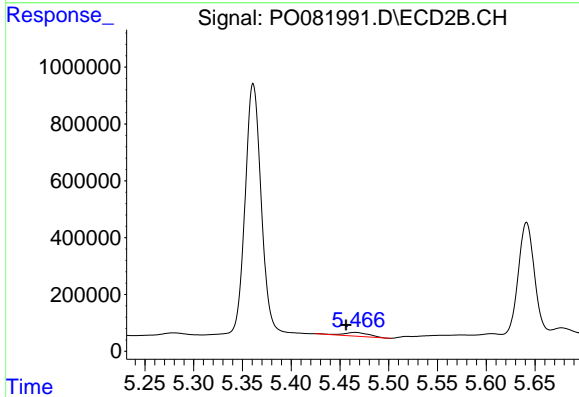
#12 AR-1232-2  
 R.T.: 5.279 min  
 Delta R.T.: 0.014 min  
 Response: 131591  
 Conc: 217.15 ng/ml



#13 AR-1232-3

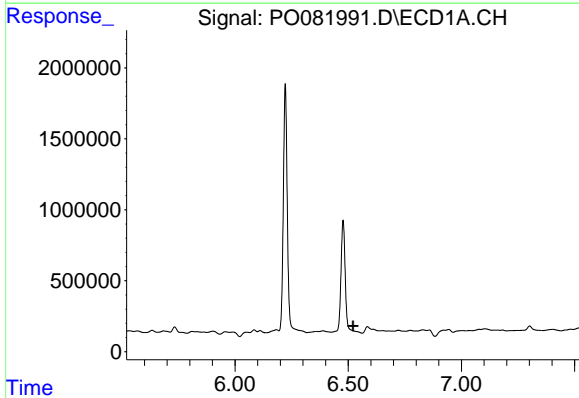
R.T.: 6.358 min  
 Delta R.T.: 0.012 min  
 Response: -125773  
 Conc: N.D.

Instrument :  
 ECD\_O  
 ClientSampled :



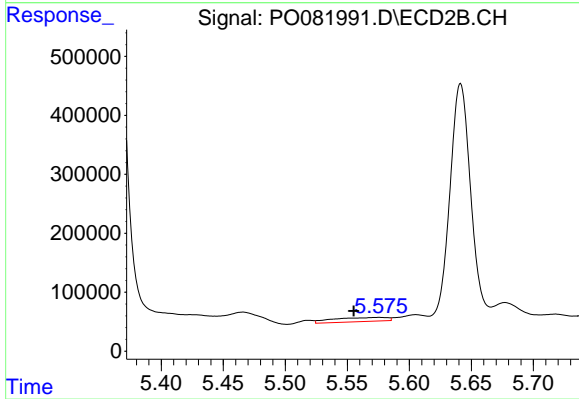
#13 AR-1232-3

R.T.: 5.466 min  
 Delta R.T.: 0.009 min  
 Response: 234306  
 Conc: 735.58 ng/ml



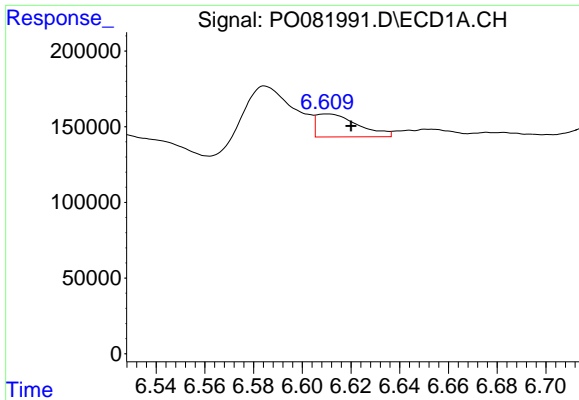
#14 AR-1232-4

R.T.: 0.000 min  
 Exp R.T. : 6.521 min  
 Response: 0  
 Conc: N.D.



#14 AR-1232-4

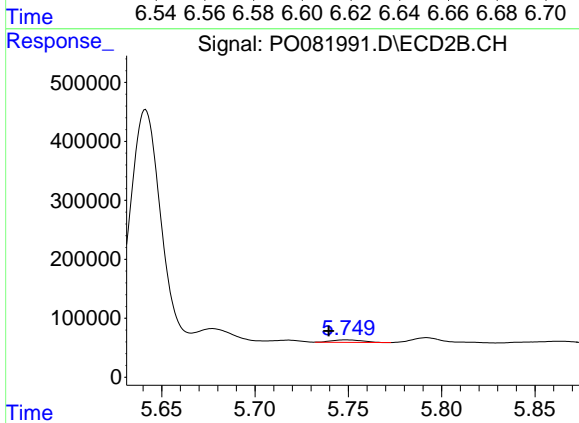
R.T.: 5.576 min  
 Delta R.T.: 0.021 min  
 Response: 211511  
 Conc: 688.15 ng/ml



#15 AR-1232-5

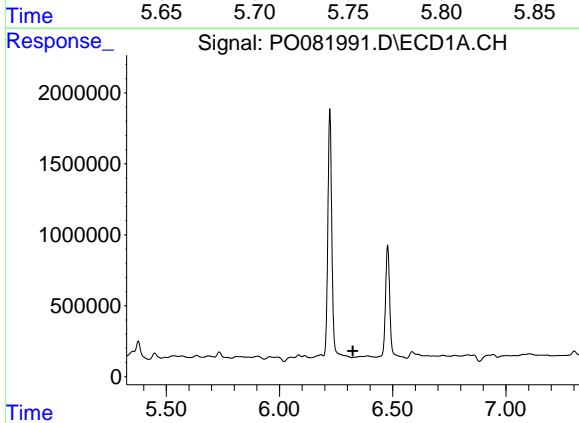
R.T.: 6.610 min  
 Delta R.T.: -0.010 min  
 Response: 179159  
 Conc: 296.72 ng/ml

Instrument :  
 ECD\_O  
 ClientSampleId :



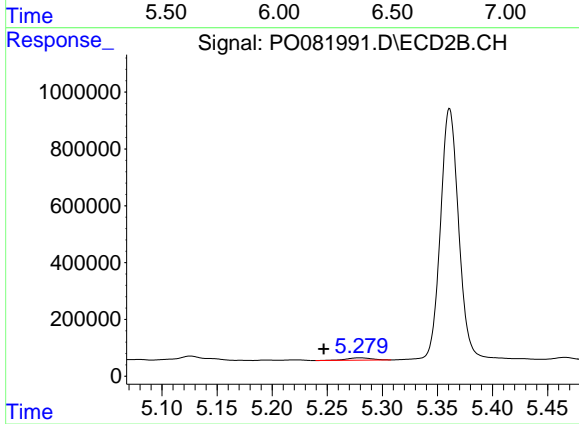
#15 AR-1232-5

R.T.: 5.749 min  
 Delta R.T.: 0.009 min  
 Response: 46580  
 Conc: 150.06 ng/ml



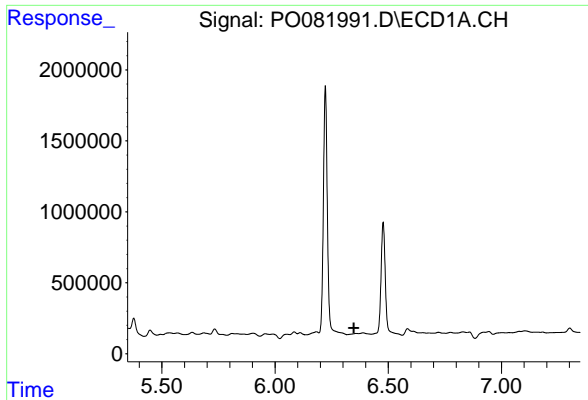
#16 AR-1242-1

R.T.: 0.000 min  
 Exp R.T. : 6.324 min  
 Response: 0  
 Conc: N.D.



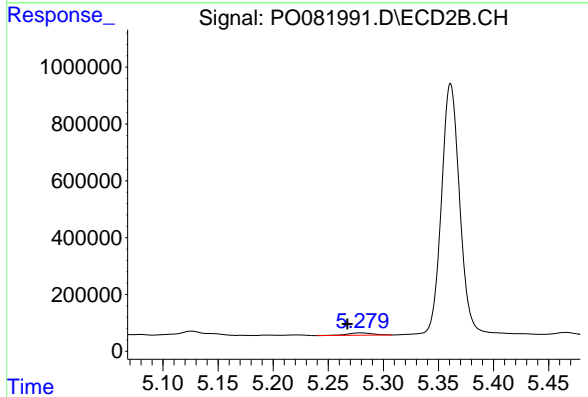
#16 AR-1242-1

R.T.: 5.279 min  
 Delta R.T.: 0.033 min  
 Response: 131591  
 Conc: 170.42 ng/ml

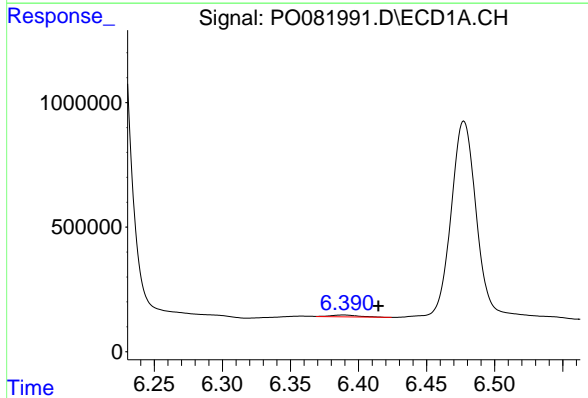


#17 AR-1242-2  
 R.T.: 6.358 min  
 Delta R.T.: 0.010 min  
 Response: -125773  
 Conc: N.D.

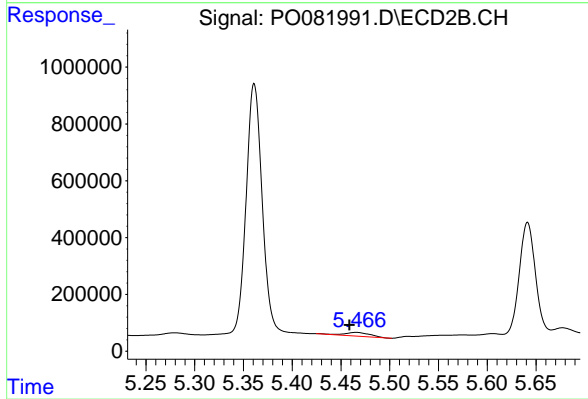
Instrument :  
 ECD\_O  
 ClientSampled :



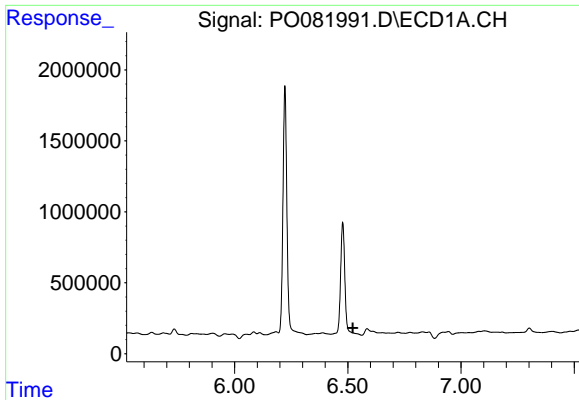
#17 AR-1242-2  
 R.T.: 5.279 min  
 Delta R.T.: 0.012 min  
 Response: 131591  
 Conc: 124.64 ng/ml



#18 AR-1242-3  
 R.T.: 6.389 min  
 Delta R.T.: -0.026 min  
 Response: 112423  
 Conc: 61.65 ng/ml

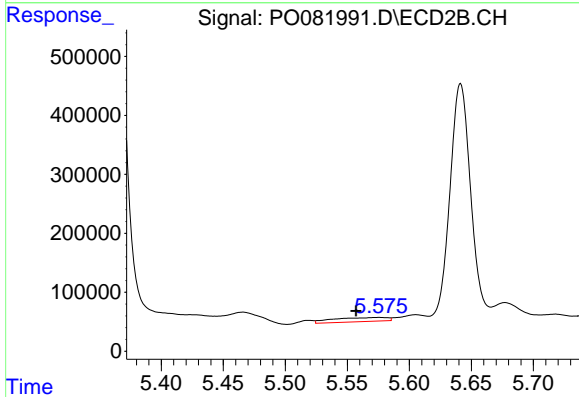


#18 AR-1242-3  
 R.T.: 5.466 min  
 Delta R.T.: 0.007 min  
 Response: 234306  
 Conc: 414.80 ng/ml

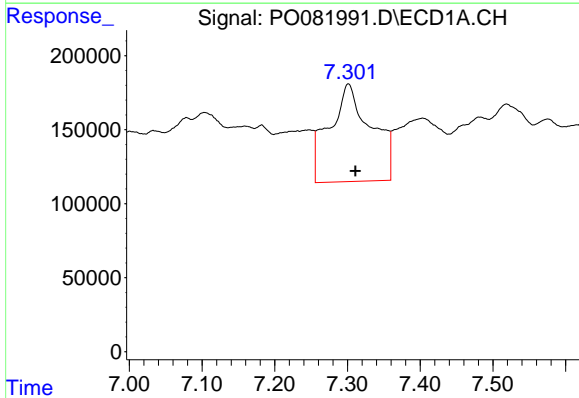


#19 AR-1242-4  
 R.T.: 0.000 min  
 Exp R.T.: 6.522 min  
 Response: 0  
 Conc: N.D.

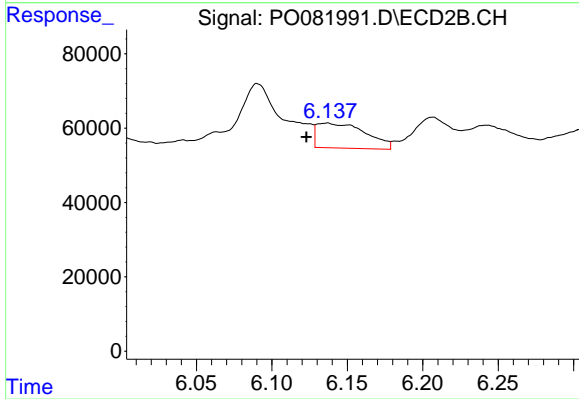
Instrument :  
 ECD\_O  
 ClientSampled :



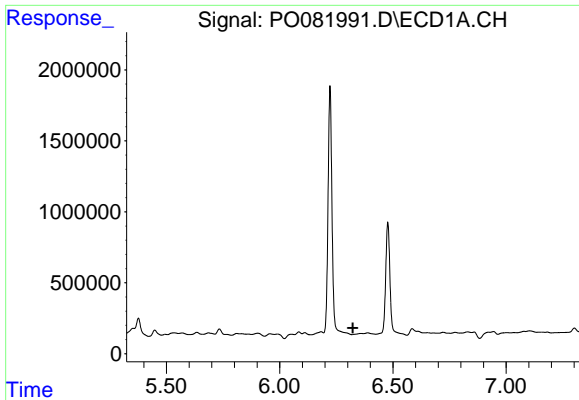
#19 AR-1242-4  
 R.T.: 5.576 min  
 Delta R.T.: 0.019 min  
 Response: 211511  
 Conc: 339.35 ng/ml



#20 AR-1242-5  
 R.T.: 7.301 min  
 Delta R.T.: -0.010 min  
 Response: 2627535  
 Conc: 1799.96 ng/ml



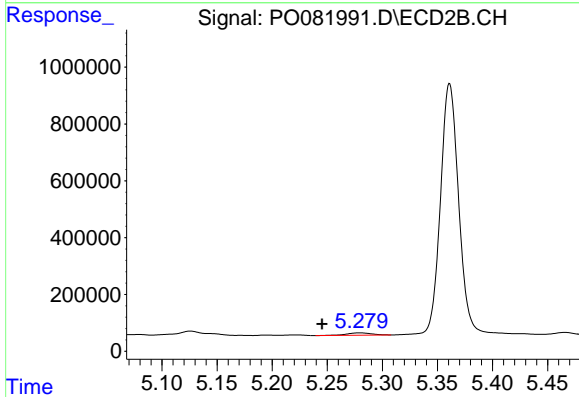
#20 AR-1242-5  
 R.T.: 6.137 min  
 Delta R.T.: 0.014 min  
 Response: 151080  
 Conc: 207.05 ng/ml



#21 AR-1248-1

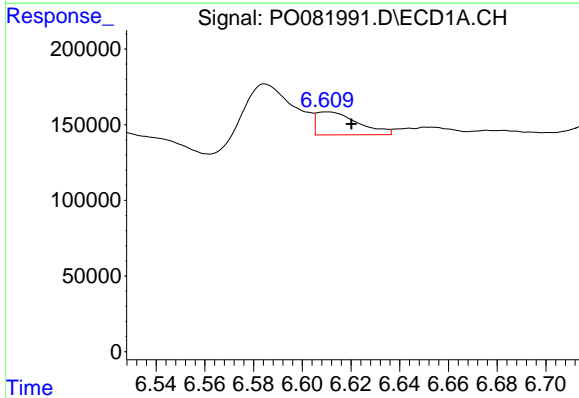
R.T.: 0.000 min  
 Exp R.T.: 6.323 min  
 Response: 0  
 Conc: N.D.

Instrument :  
 ECD\_O  
 ClientSampleId :



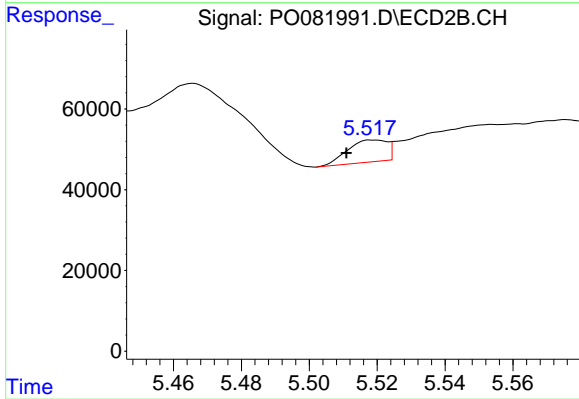
#21 AR-1248-1

R.T.: 5.279 min  
 Delta R.T.: 0.034 min  
 Response: 131591  
 Conc: 215.95 ng/ml



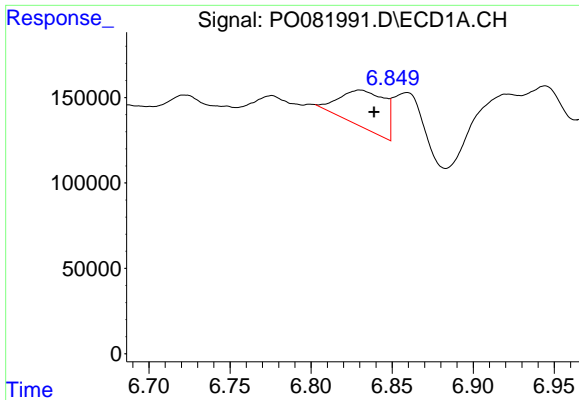
#22 AR-1248-2

R.T.: 6.610 min  
 Delta R.T.: -0.010 min  
 Response: 179159  
 Conc: 81.59 ng/ml



#22 AR-1248-2

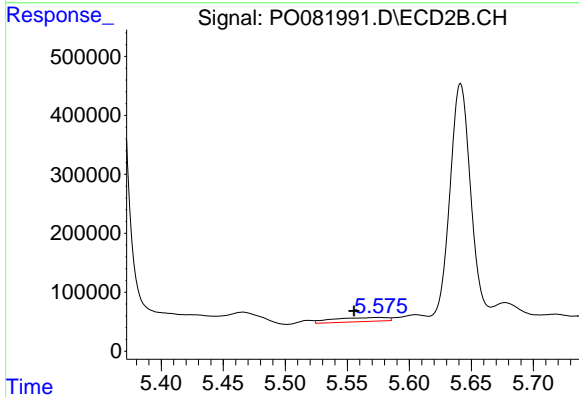
R.T.: 5.519 min  
 Delta R.T.: 0.008 min  
 Response: 44169  
 Conc: 52.32 ng/ml



#23 AR-1248-3

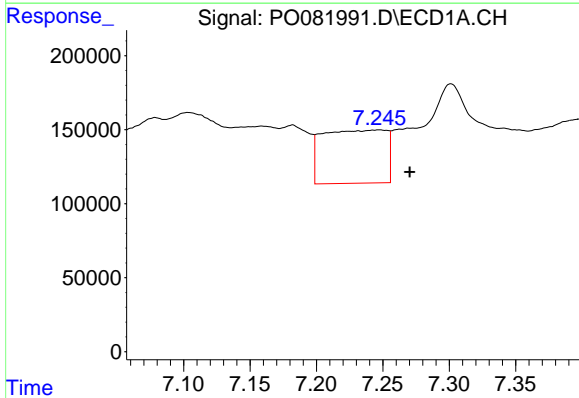
R.T.: 6.830 min  
 Delta R.T.: -0.009 min  
 Response: 422114  
 Conc: 171.99 ng/ml

Instrument :  
 ECD\_O  
 ClientSampleId :



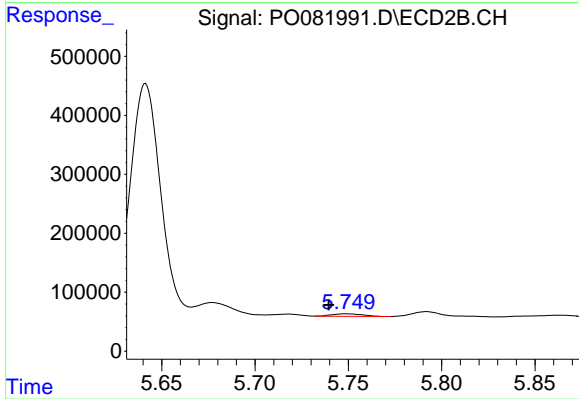
#23 AR-1248-3

R.T.: 5.576 min  
 Delta R.T.: 0.020 min  
 Response: 211511  
 Conc: 236.36 ng/ml



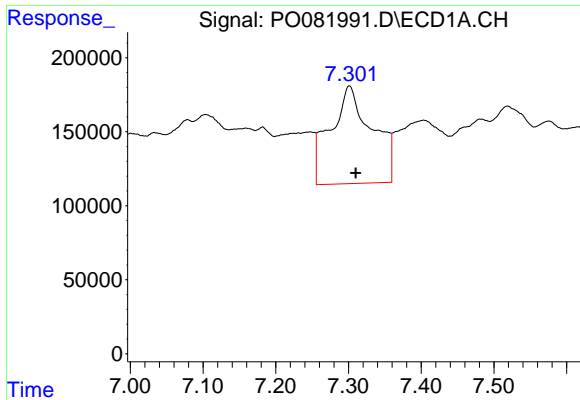
#24 AR-1248-4

R.T.: 7.247 min  
 Delta R.T.: -0.023 min  
 Response: 1194080  
 Conc: 456.30 ng/ml



#24 AR-1248-4

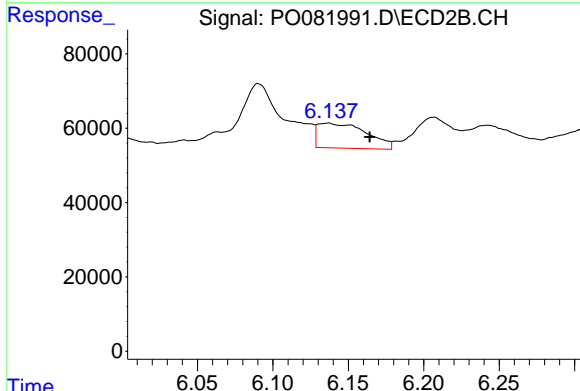
R.T.: 5.749 min  
 Delta R.T.: 0.009 min  
 Response: 46580  
 Conc: 46.82 ng/ml



#25 AR-1248-5

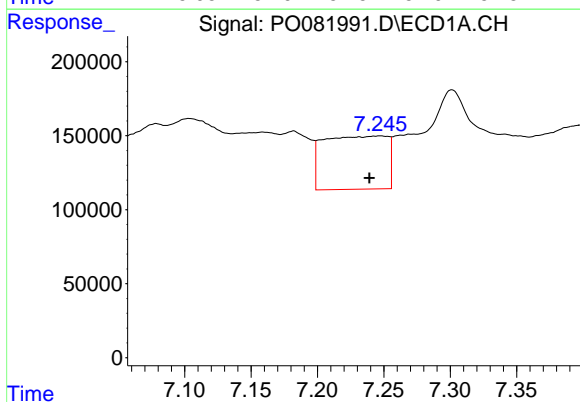
R.T.: 7.301 min  
 Delta R.T.: -0.009 min  
 Response: 2627535  
 Conc: 1054.44 ng/ml

Instrument :  
 ECD\_O  
 ClientSampleId :



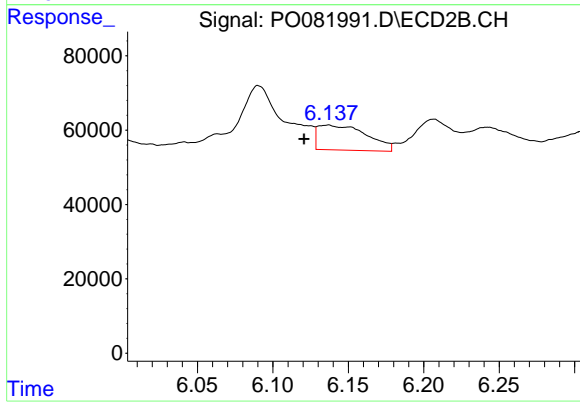
#25 AR-1248-5

R.T.: 6.137 min  
 Delta R.T.: -0.028 min  
 Response: 151080  
 Conc: 158.40 ng/ml



#26 AR-1254-1

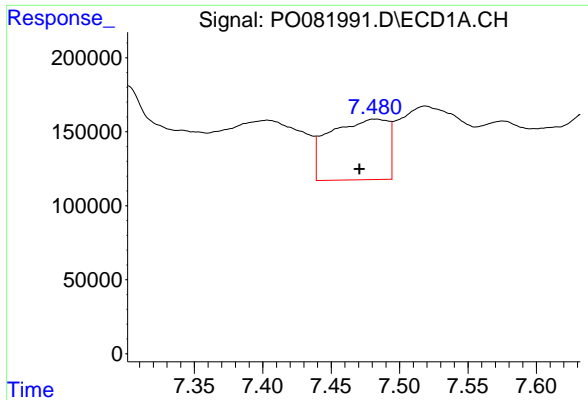
R.T.: 7.247 min  
 Delta R.T.: 0.008 min  
 Response: 1194080  
 Conc: 436.48 ng/ml



#26 AR-1254-1

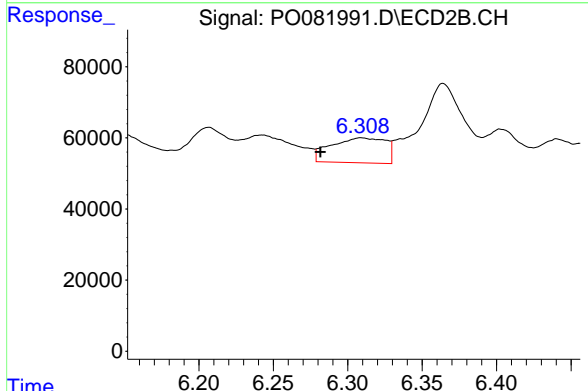
R.T.: 6.137 min  
 Delta R.T.: 0.016 min  
 Response: 151080  
 Conc: 105.28 ng/ml



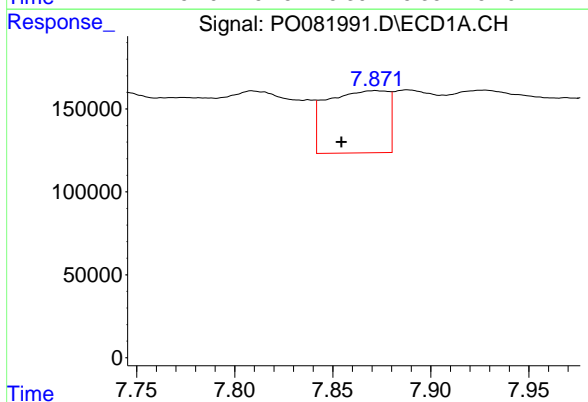


#27 AR-1254-2  
 R.T.: 7.482 min  
 Delta R.T.: 0.011 min  
 Response: 1213497  
 Conc: 297.43 ng/ml

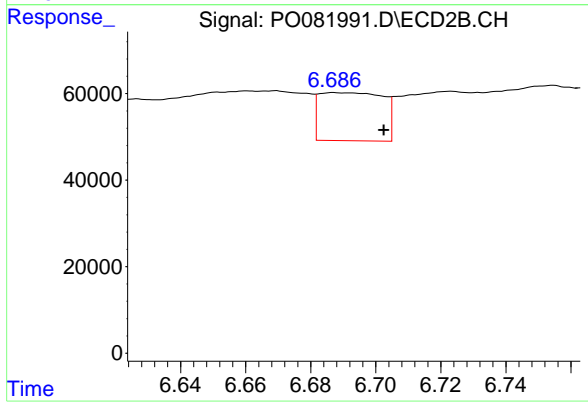
Instrument :  
 ECD\_O  
 ClientSampleId :



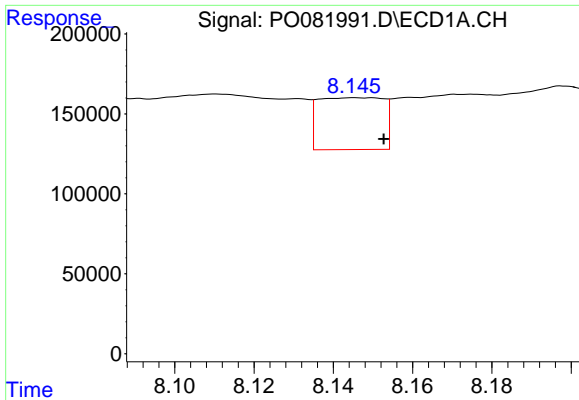
#27 AR-1254-2  
 R.T.: 6.309 min  
 Delta R.T.: 0.027 min  
 Response: 179045  
 Conc: 138.09 ng/ml



#28 AR-1254-3  
 R.T.: 7.872 min  
 Delta R.T.: 0.017 min  
 Response: 815447  
 Conc: 199.85 ng/ml

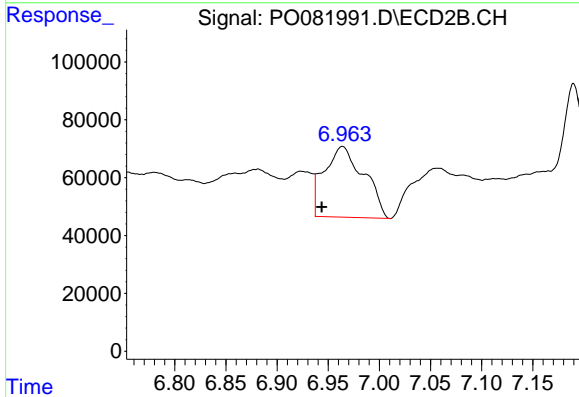


#28 AR-1254-3  
 R.T.: 6.687 min  
 Delta R.T.: -0.015 min  
 Response: 150950  
 Conc: 75.79 ng/ml

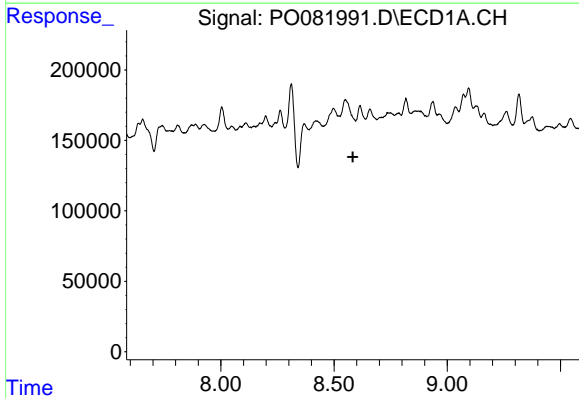


#29 AR-1254-4  
 R.T.: 8.146 min  
 Delta R.T.: -0.007 min  
 Response: 368098  
 Conc: 122.74 ng/ml

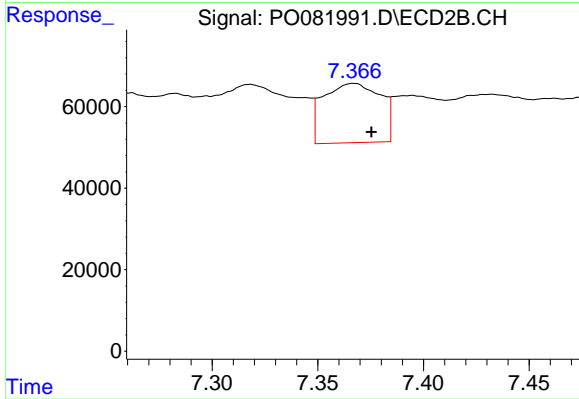
Instrument :  
 ECD\_O  
 ClientSampleId :



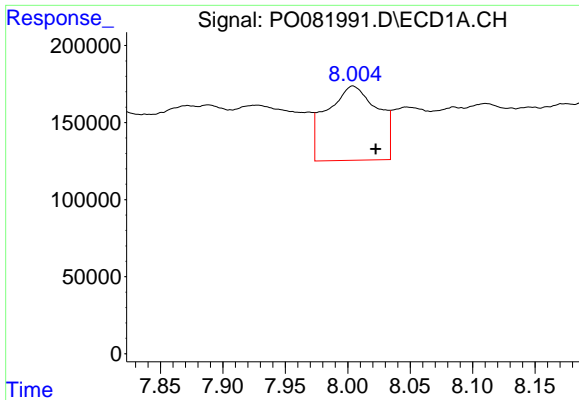
#29 AR-1254-4  
 R.T.: 6.964 min  
 Delta R.T.: 0.020 min  
 Response: 660273  
 Conc: 516.96 ng/ml



#30 AR-1254-5  
 R.T.: 0.000 min  
 Exp R.T. : 8.583 min  
 Response: 0  
 Conc: N.D.



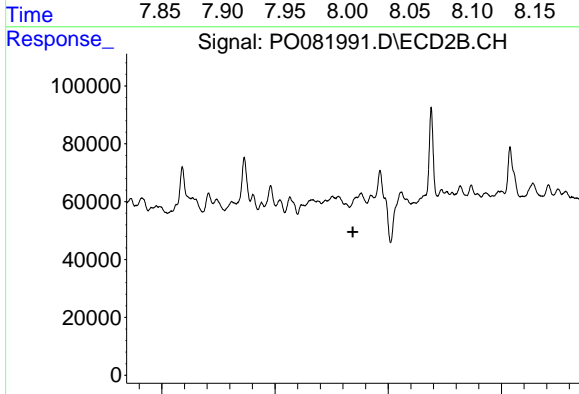
#30 AR-1254-5  
 R.T.: 7.367 min  
 Delta R.T.: -0.008 min  
 Response: 273700  
 Conc: 151.25 ng/ml



#31 AR-1260-1

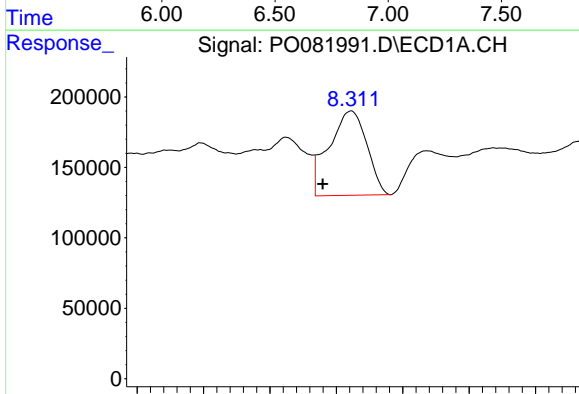
R.T.: 8.004 min  
 Delta R.T.: -0.018 min  
 Response: 1375304  
 Conc: 438.03 ng/ml

Instrument :  
 ECD\_O  
 ClientSampleId :



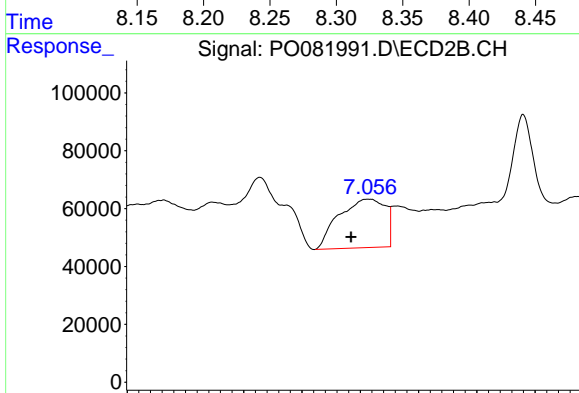
#31 AR-1260-1

R.T.: 0.000 min  
 Exp R.T. : 6.844 min  
 Response: 0  
 Conc: N.D.



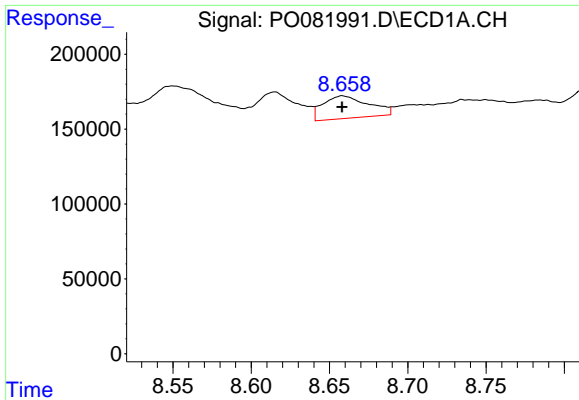
#32 AR-1260-2

R.T.: 8.311 min  
 Delta R.T.: 0.021 min  
 Response: 1186669  
 Conc: 321.32 ng/ml



#32 AR-1260-2

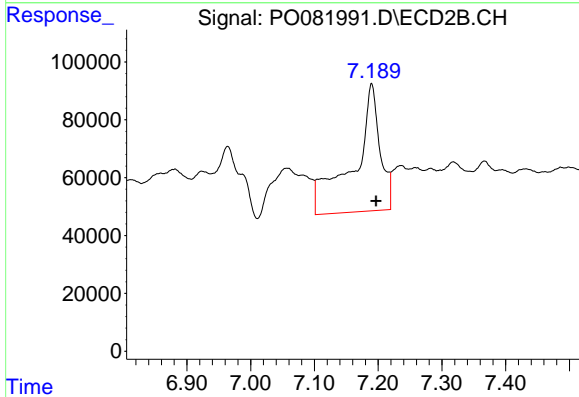
R.T.: 7.057 min  
 Delta R.T.: 0.015 min  
 Response: 465180  
 Conc: 269.43 ng/ml



#33 AR-1260-3

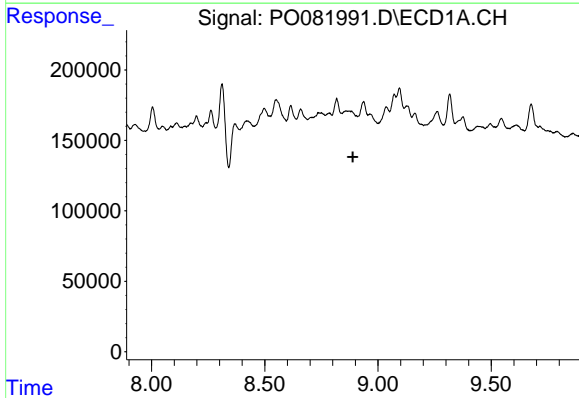
R.T.: 8.658 min  
 Delta R.T.: 0.000 min  
 Response: 305738  
 Conc: 123.66 ng/ml

Instrument :  
 ECD\_O  
 ClientSampled :



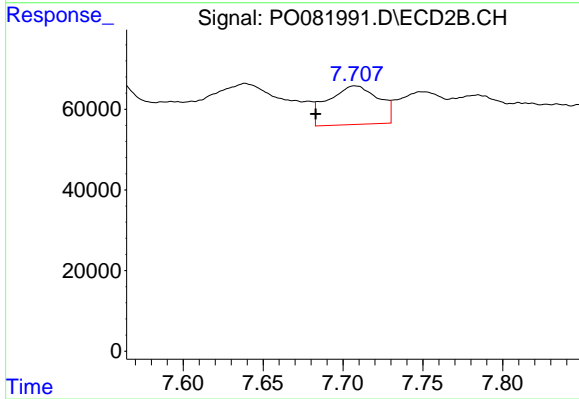
#33 AR-1260-3

R.T.: 7.190 min  
 Delta R.T.: -0.007 min  
 Response: 1275186  
 Conc: 779.76 ng/ml



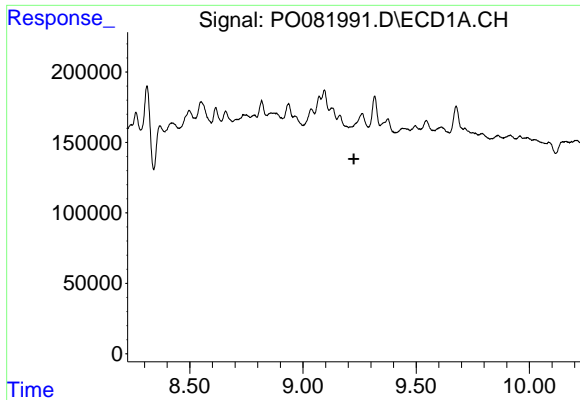
#34 AR-1260-4

R.T.: 0.000 min  
 Exp R.T. : 8.889 min  
 Response: 0  
 Conc: N.D.



#34 AR-1260-4

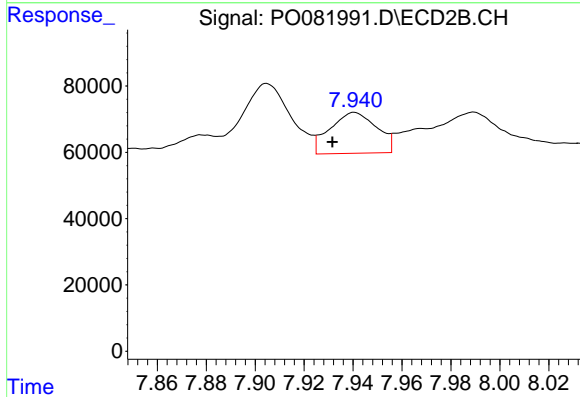
R.T.: 7.708 min  
 Delta R.T.: 0.025 min  
 Response: 209981  
 Conc: 174.65 ng/ml



#35 AR-1260-5

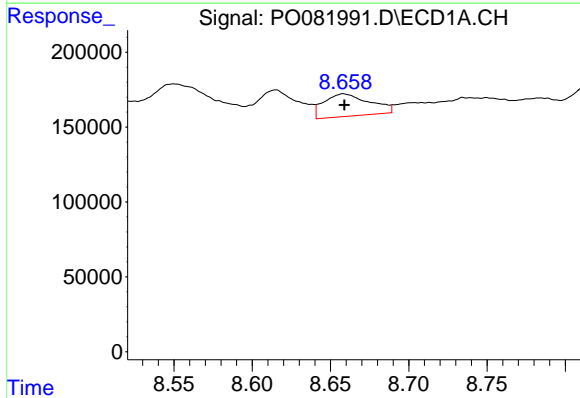
R.T.: 0.000 min  
 Exp R.T.: 9.225 min  
 Response: 0  
 Conc: N.D.

Instrument :  
 ECD\_O  
 ClientSampled :



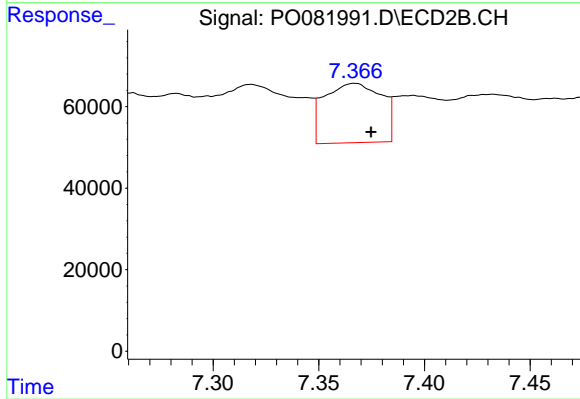
#35 AR-1260-5

R.T.: 7.941 min  
 Delta R.T.: 0.009 min  
 Response: 163518  
 Conc: 57.80 ng/ml



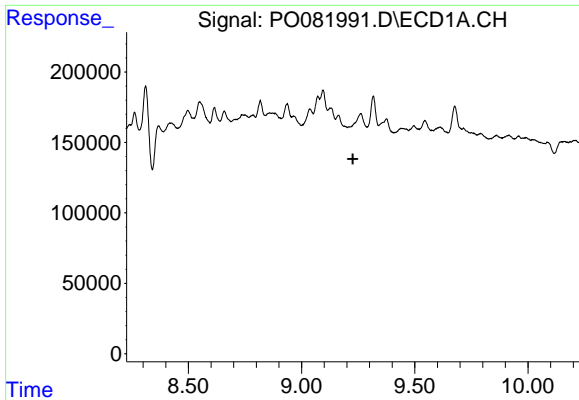
#36 AR-1262-1

R.T.: 8.658 min  
 Delta R.T.: 0.000 min  
 Response: 305738  
 Conc: 77.76 ng/ml



#36 AR-1262-1

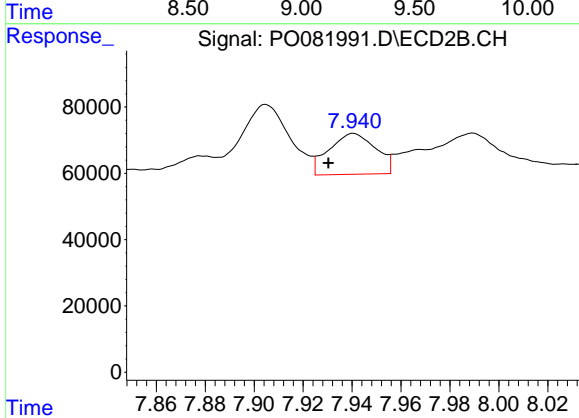
R.T.: 7.367 min  
 Delta R.T.: -0.008 min  
 Response: 273700  
 Conc: 273.87 ng/ml



#37 AR-1262-2

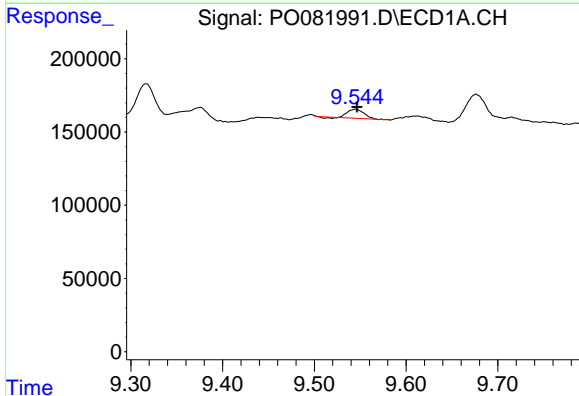
R.T.: 0.000 min  
 Exp R.T.: 9.227 min  
 Response: 0  
 Conc: N.D.

Instrument :  
 ECD\_O  
 ClientSampled :



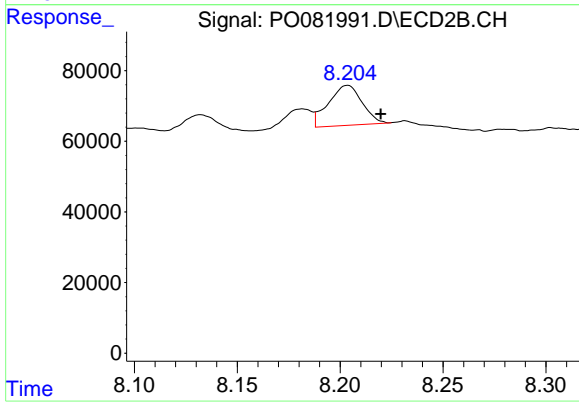
#37 AR-1262-2

R.T.: 7.941 min  
 Delta R.T.: 0.010 min  
 Response: 163518  
 Conc: 50.76 ng/ml



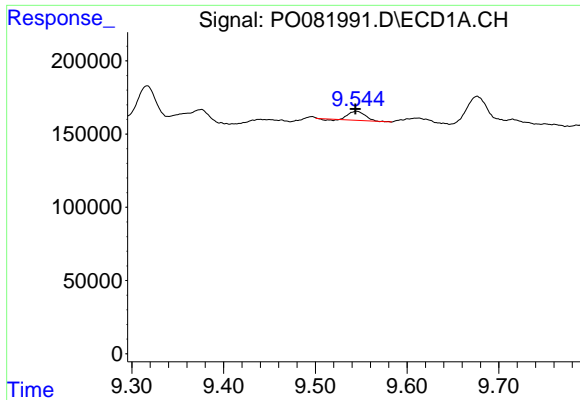
#38 AR-1262-3

R.T.: 9.545 min  
 Delta R.T.: -0.002 min  
 Response: 77437  
 Conc: 22.78 ng/ml



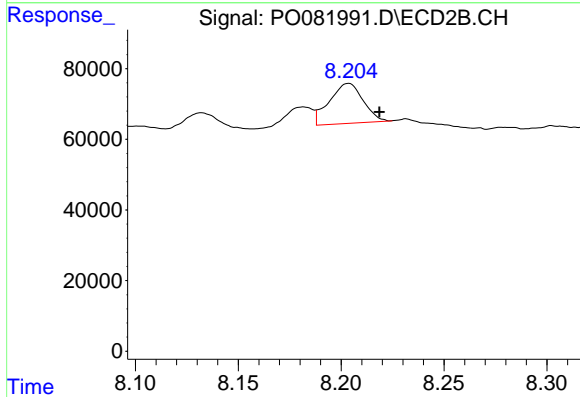
#38 AR-1262-3

R.T.: 8.204 min  
 Delta R.T.: -0.016 min  
 Response: 129422  
 Conc: 96.94 ng/ml

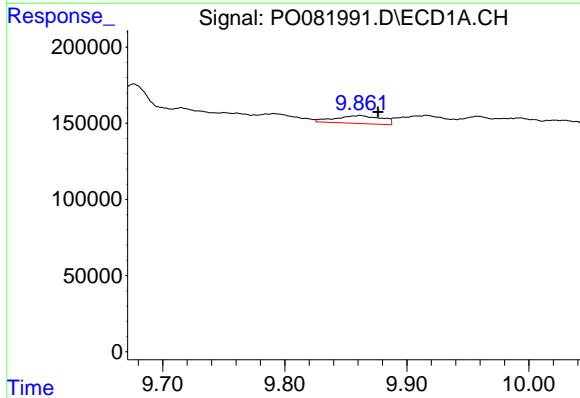


#41 AR-1268-1  
 R.T.: 9.545 min  
 Delta R.T.: 0.000 min  
 Response: 77437  
 Conc: 8.99 ng/ml

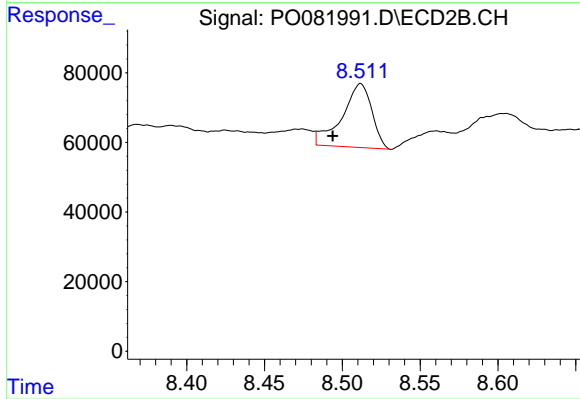
Instrument :  
 ECD\_O  
 ClientSampleId :



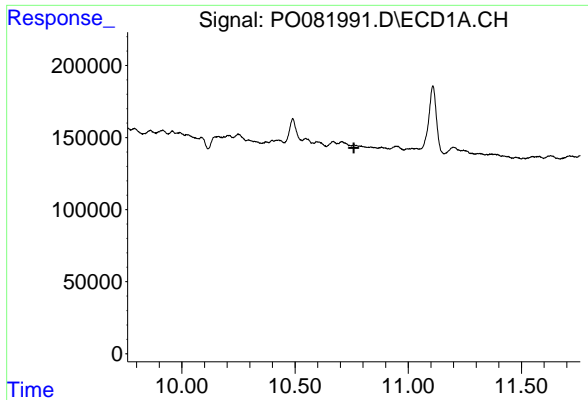
#41 AR-1268-1  
 R.T.: 8.204 min  
 Delta R.T.: -0.015 min  
 Response: 129422  
 Conc: 32.89 ng/ml



#43 AR-1268-3  
 R.T.: 9.862 min  
 Delta R.T.: -0.015 min  
 Response: 135390  
 Conc: 19.81 ng/ml



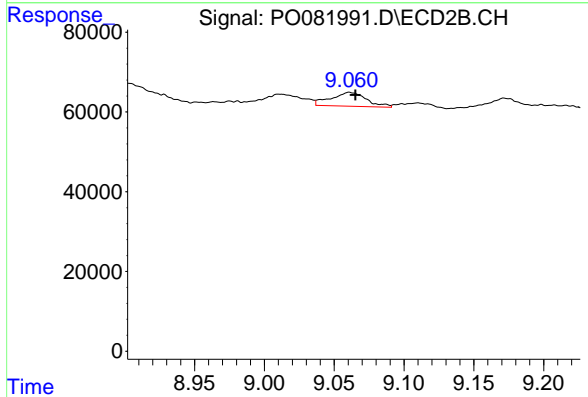
#43 AR-1268-3  
 R.T.: 8.512 min  
 Delta R.T.: 0.018 min  
 Response: 245308  
 Conc: 81.74 ng/ml



#45 AR-1268-5

R.T.: 0.000 min  
 Exp R.T.: 10.760 min  
 Response: 0  
 Conc: N.D.

Instrument :  
 ECD\_O  
 ClientSampled :



#45 AR-1268-5

R.T.: 9.061 min  
 Delta R.T.: -0.004 min  
 Response: 61465  
 Conc: 6.71 ng/ml