

Data Path : Z:\pestpcbsrv\HPCHEM1\ECD_0\Data\PO101123\
 Data File : PO098663.D
 Signal(s) : Signal #1: ECD1A.ch Signal #2: ECD2B.ch
 Acq On : 11 Oct 2023 09:30
 Operator : YP/AJ
 Sample : AR1660CCC500
 Misc :
 ALS Vial : 3 Sample Multiplier: 1

Instrument :
 ECD_0
 ClientSampleId :

Integration File signal 1: autoint1.e
 Integration File signal 2: autoint2.e
 Quant Time: Oct 11 14:42:33 2023
 Quant Method : Z:\pestpcbsrv\HPCHEM1\ECD_0\methods\PO092723.M
 Quant Title : GC EXTRACTABLES
 QLast Update : Thu Sep 28 01:18:56 2023
 Response via : Initial Calibration
 Integrator: ChemStation

Volume Inj. : 2 µl
 Signal #1 Phase : ZB-MR1 Signal #2 Phase: ZB-MR2
 Signal #1 Info : 30Mx0.32mmx 0.50µ Signal #2 Info : 30M x 0.32mm x 0.25µm

Compound	RT#1	RT#2	Resp#1	Resp#2	ng/ml	ng/ml
System Monitoring Compounds						
1) SA Tetrachlo...	4.481	3.632	99167920	40057197	51.645	51.430
2) SA Decachlor...	10.295	8.644	62852508	28203375	51.779	52.641
Target Compounds						
3) L1 AR-1016-1	5.657	4.715	27725510	12099710	513.020	506.938
4) L1 AR-1016-2	5.679	4.734	41721541	17052576	513.888	500.799
5) L1 AR-1016-3	5.742	4.910	26570421	9119362	531.059	506.952
6) L1 AR-1016-4	5.841	4.952	20710340	7926178	529.654	528.719
7) L1 AR-1016-5	6.137	5.165	21607250	10204770	525.456	525.467
8) L2 AR-1221-1	4.688	3.845	3934317	1572337	174.739	171.137
9) L2 AR-1221-2	4.779	3.932	5511838	2045144	326.667	307.564
10) L2 AR-1221-3	4.855	4.007	18213942	7492111	372.413	371.401
11) L3 AR-1232-1	4.855	4.007	18213942	7492111	445.907	445.746
12) L3 AR-1232-2	5.387	4.734	25086321	17052576	1159.905	1134.836
13) L3 AR-1232-3	5.679	4.910	41721541	9119362	1173.653	1165.171
14) L3 AR-1232-4	5.841	4.994	20710340	9825953	1219.928	1306.794
15) L3 AR-1232-5	5.932	5.165	18981555	10204770	1333.180	1261.448
16) L4 AR-1242-1	5.657	4.715	27725510	12099710	608.862	577.941
17) L4 AR-1242-2	5.679	4.734	41721541	17052576	609.163	586.465
18) L4 AR-1242-3	5.742	4.910	26570421	9119362	627.457	583.524
19) L4 AR-1242-4	5.841	4.994	20710340	9825953	631.195	593.270
20) L4 AR-1242-5	6.582	5.518	6381598	9673368	180.163	521.237 #
21) L5 AR-1248-1	5.657	4.715	27725510	12099710	819.243	772.100
22) L5 AR-1248-2	5.932	4.952	18981555	7926178	366.518	360.171
23) L5 AR-1248-3	6.137	4.994	21607250	9825953	382.340	418.486
24) L5 AR-1248-4	6.541	5.165	6261191	10204770	110.449	382.570 #
25) L5 AR-1248-5	6.582	5.559	6381598	2379542	107.892	100.842
26) L6 AR-1254-1	6.516	5.518	18596468	9673368	294.417	252.279
27) L6 AR-1254-2	6.734	5.665	16164017	7123979	168.432	206.925
28) L6 AR-1254-3	7.102	6.086	6763548	12680780	71.882	244.040 #
29) L6 AR-1254-4	7.388	6.300	4059202	809937	69.717	29.508 #
30) L6 AR-1254-5	7.808	6.717	53996610	21726792	773.094	501.566 #
31) L7 AR-1260-1	7.267	6.201	37850685	18506447	520.535	504.393
32) L7 AR-1260-2	7.524	6.389	42055067	21052932	510.744	501.732
33) L7 AR-1260-3	7.885	6.543	34425688	20164911	556.487	503.908
34) L7 AR-1260-4	8.112	7.016	38246774	16506442	567.353	512.573
35) L7 AR-1260-5	8.438	7.258	65744179	34006320	506.037	485.386
36) L8 AR-1262-1	7.885	6.756	34425688	18220285	395.833	402.541
37) L8 AR-1262-2	8.438	7.016	65744179	16506442	466.088	409.348
38) L8 AR-1262-3	8.770	7.543	42097123	8338140	426.377	268.594 #
39) L8 AR-1262-4	8.830	7.606	28607234	24519804	372.774	452.618
40) L8 AR-1262-5	9.520	8.103	17145978	8844808	353.466	358.158
41) L9 AR-1268-1	8.770	7.543	42097123	8338140	242.435	91.247 #

Data Path : Z:\pestpcbsrv\HPCHEM1\ECD_0\Data\PO101123\
 Data File : PO098663.D
 Signal(s) : Signal #1: ECD1A.ch Signal #2: ECD2B.ch
 Acq On : 11 Oct 2023 09:30
 Operator : YP/AJ
 Sample : AR1660CCC500
 Misc :
 ALS Vial : 3 Sample Multiplier: 1

Instrument :
 ECD_0
 ClientSampleId :

Integration File signal 1: autoint1.e
 Integration File signal 2: autoint2.e
 Quant Time: Oct 11 14:42:33 2023
 Quant Method : Z:\pestpcbsrv\HPCHEM1\ECD_0\methods\PO092723.M
 Quant Title : GC EXTRACTABLES
 QLast Update : Thu Sep 28 01:18:56 2023
 Response via : Initial Calibration
 Integrator: ChemStation

Volume Inj. : 2 µl
 Signal #1 Phase : ZB-MR1 Signal #2 Phase: ZB-MR2
 Signal #1 Info : 30Mx0.32mmx 0.50µ Signal #2 Info : 30M x 0.32mm x 0.25µm

	Compound	RT#1	RT#2	Resp#1	Resp#2	ng/ml	ng/ml
42)	L9 AR-1268-2	8.830	7.606	28607234	24519804	183.466	316.228 #
43)	L9 AR-1268-3	9.085	7.814	789106	481872	5.771	7.272 #
44)	L9 AR-1268-4	9.520	8.103	17145978	8844808	321.874	326.760
45)	L9 AR-1268-5	9.947	8.392	5137338	2439230	11.700	12.325

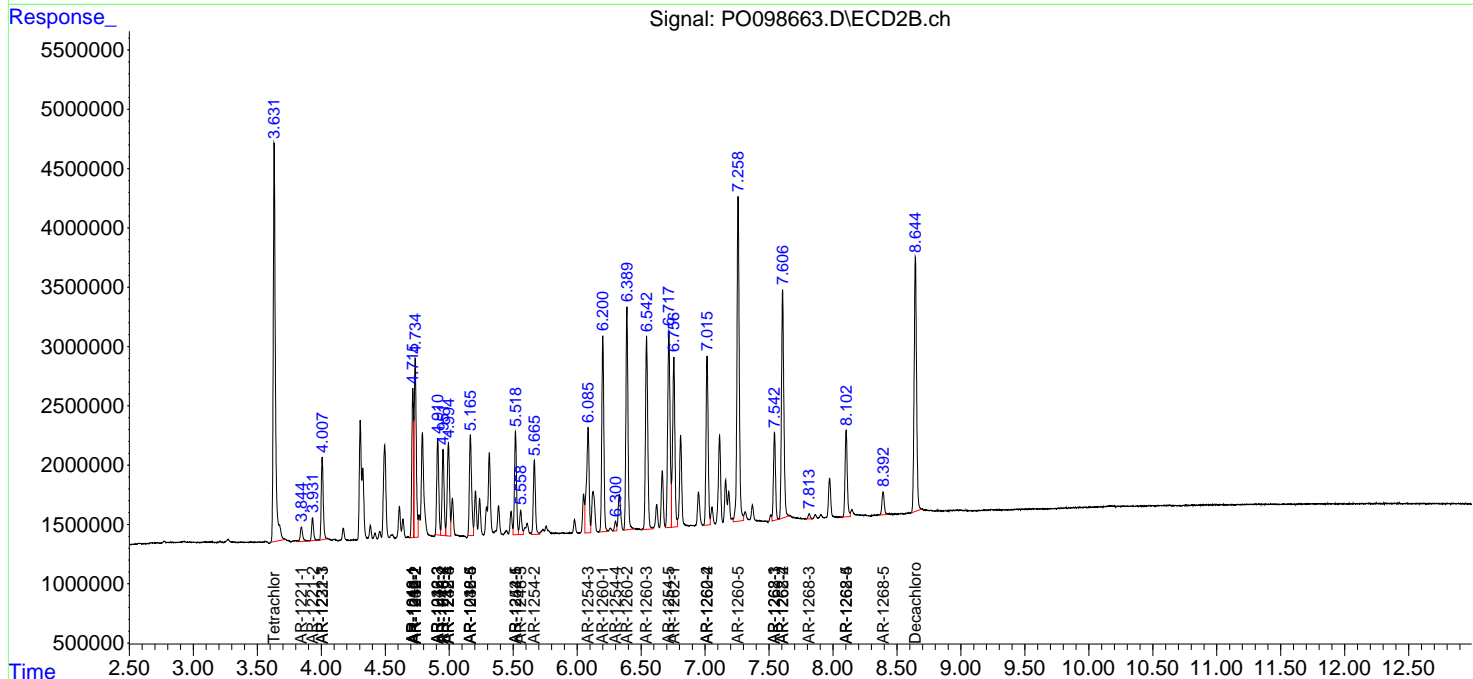
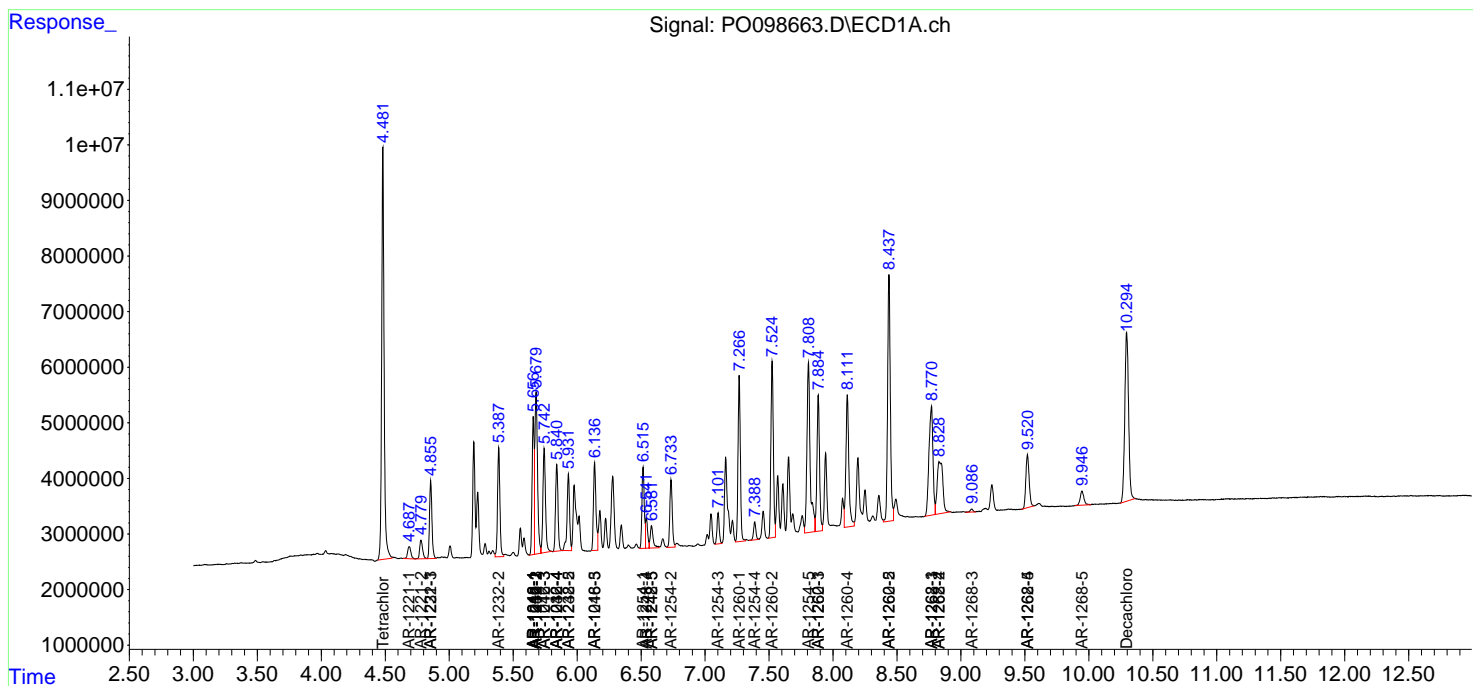
(f)=RT Delta > 1/2 Window (#)=Amounts differ by > 25% (m)=manual int.

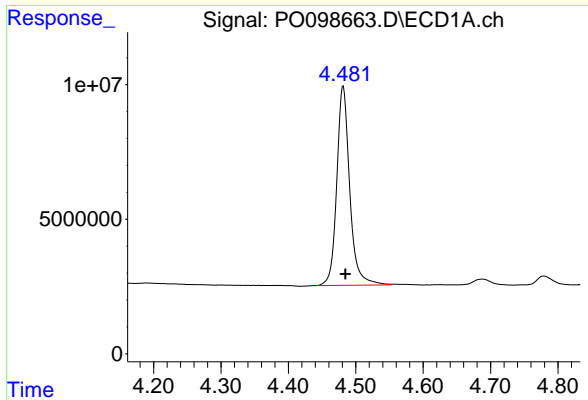
Data Path : Z:\pestpcbsrv\HPCHEM1\ECD_O\Data\PO101123\
 Data File : PO098663.D
 Signal(s) : Signal #1: ECD1A.ch Signal #2: ECD2B.ch
 Acq On : 11 Oct 2023 09:30
 Operator : YP/AJ
 Sample : AR1660CCC500
 Misc :
 ALS Vial : 3 Sample Multiplier: 1

Instrument :
 ECD_O
 ClientSampleId :

Integration File signal 1: autoint1.e
 Integration File signal 2: autoint2.e
 Quant Time: Oct 11 14:42:33 2023
 Quant Method : Z:\pestpcbsrv\HPCHEM1\ECD_O\methods\PO092723.M
 Quant Title : GC EXTRACTABLES
 QLast Update : Thu Sep 28 01:18:56 2023
 Response via : Initial Calibration
 Integrator: ChemStation

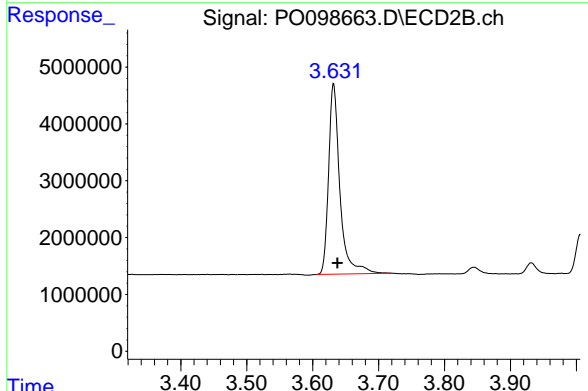
Volume Inj. : 2 µl
 Signal #1 Phase : ZB-MR1 Signal #2 Phase: ZB-MR2
 Signal #1 Info : 30Mx0.32mmx 0.50µ Signal #2 Info : 30M x 0.32mm x 0.25µm



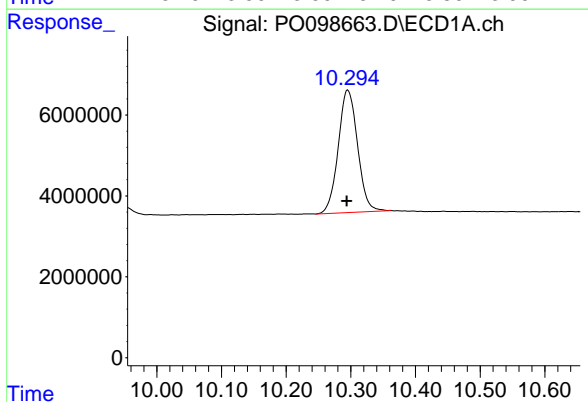


#1 Tetrachloro-m-xylene
 R.T.: 4.481 min
 Delta R.T.: -0.004 min
 Response: 99167920
 Conc: 51.65 ng/ml

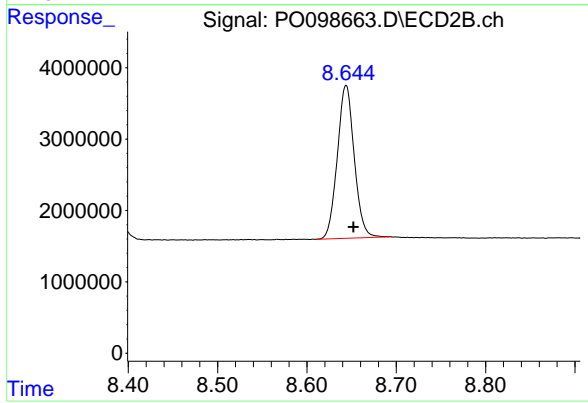
Instrument :
 ECD_O
 ClientSampleId :



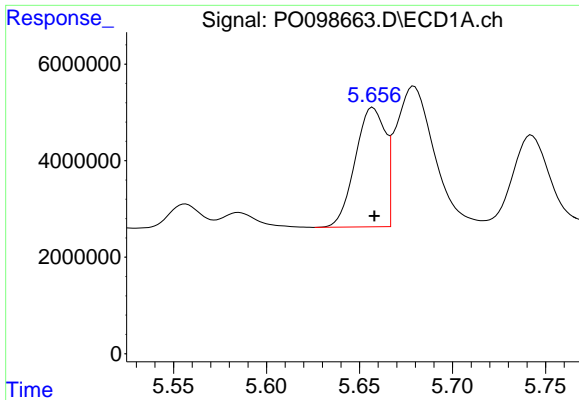
#1 Tetrachloro-m-xylene
 R.T.: 3.632 min
 Delta R.T.: -0.006 min
 Response: 40057197
 Conc: 51.43 ng/ml



#2 Decachlorobiphenyl
 R.T.: 10.295 min
 Delta R.T.: 0.002 min
 Response: 62852508
 Conc: 51.78 ng/ml



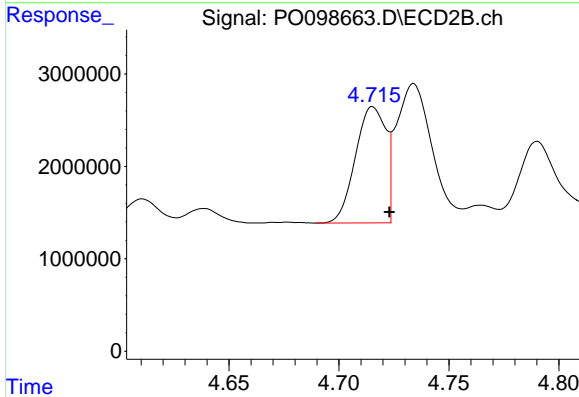
#2 Decachlorobiphenyl
 R.T.: 8.644 min
 Delta R.T.: -0.008 min
 Response: 28203375
 Conc: 52.64 ng/ml



#3 AR-1016-1

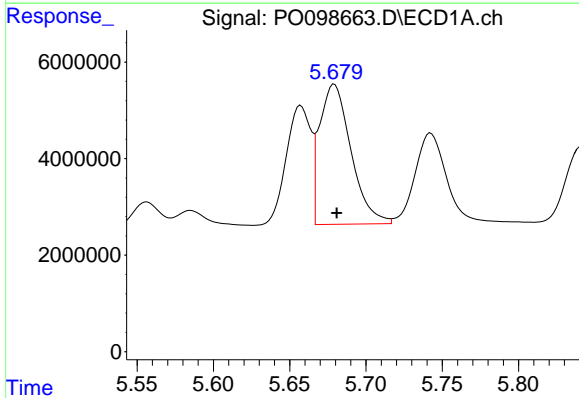
R.T.: 5.657 min
 Delta R.T.: 0.000 min
 Response: 27725510
 Conc: 513.02 ng/ml

Instrument :
 ECD_O
 ClientSampleId :



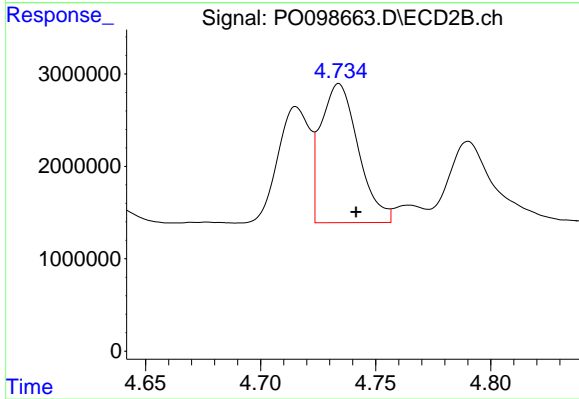
#3 AR-1016-1

R.T.: 4.715 min
 Delta R.T.: -0.008 min
 Response: 12099710
 Conc: 506.94 ng/ml



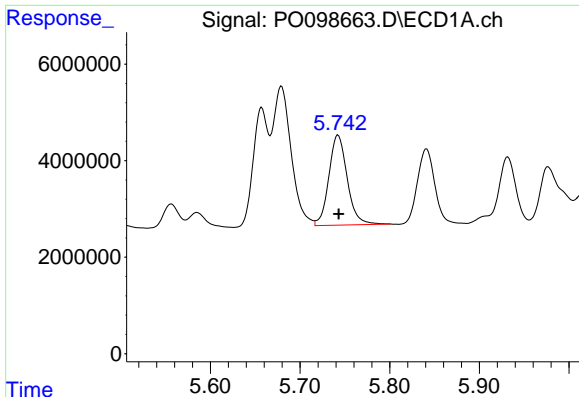
#4 AR-1016-2

R.T.: 5.679 min
 Delta R.T.: -0.002 min
 Response: 41721541
 Conc: 513.89 ng/ml



#4 AR-1016-2

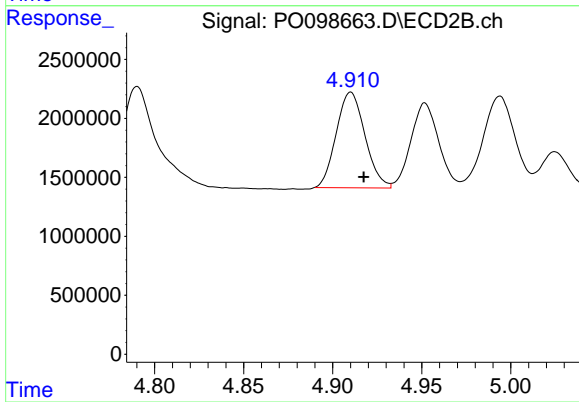
R.T.: 4.734 min
 Delta R.T.: -0.008 min
 Response: 17052576
 Conc: 500.80 ng/ml



#5 AR-1016-3

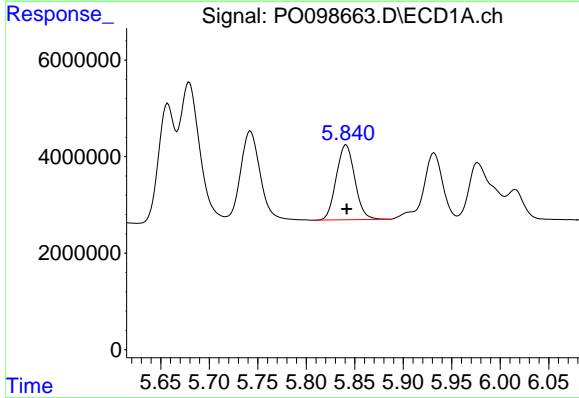
R.T.: 5.742 min
 Delta R.T.: 0.000 min
 Response: 26570421
 Conc: 531.06 ng/ml

Instrument :
 ECD_O
 ClientSampleId :



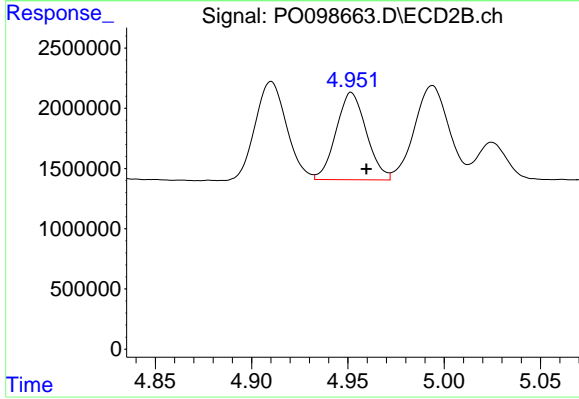
#5 AR-1016-3

R.T.: 4.910 min
 Delta R.T.: -0.007 min
 Response: 9119362
 Conc: 506.95 ng/ml



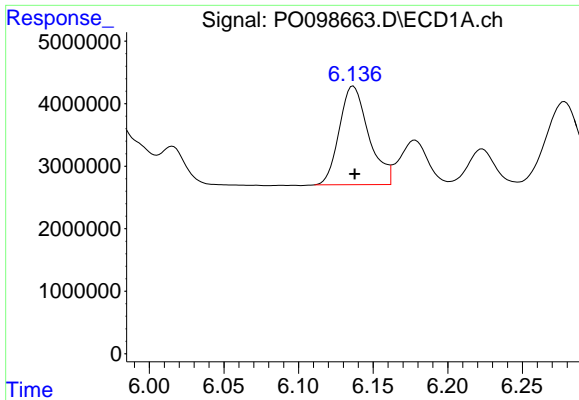
#6 AR-1016-4

R.T.: 5.841 min
 Delta R.T.: 0.000 min
 Response: 20710340
 Conc: 529.65 ng/ml



#6 AR-1016-4

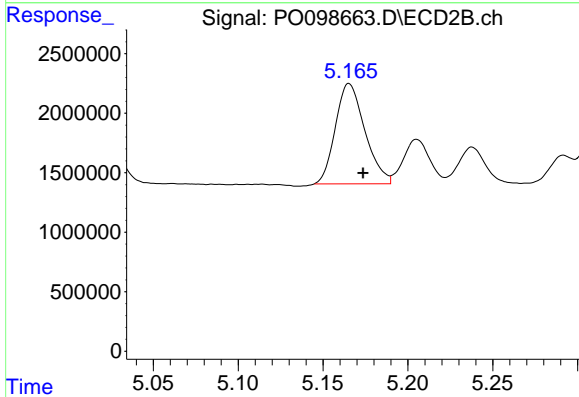
R.T.: 4.952 min
 Delta R.T.: -0.008 min
 Response: 7926178
 Conc: 528.72 ng/ml



#7 AR-1016-5

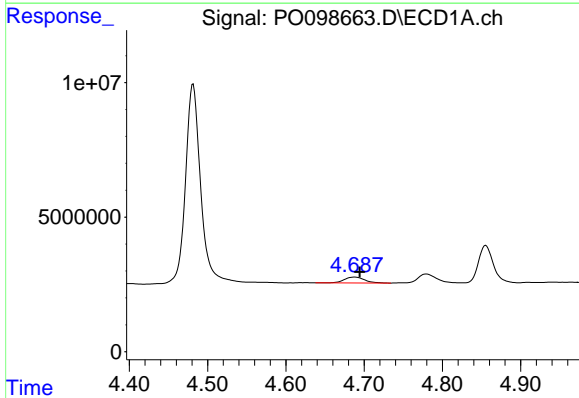
R.T.: 6.137 min
 Delta R.T.: 0.000 min
 Response: 21607250
 Conc: 525.46 ng/ml

Instrument :
 ECD_O
 ClientSampleId :



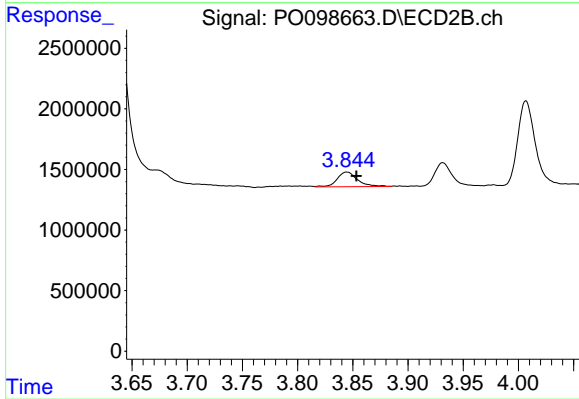
#7 AR-1016-5

R.T.: 5.165 min
 Delta R.T.: -0.008 min
 Response: 10204770
 Conc: 525.47 ng/ml



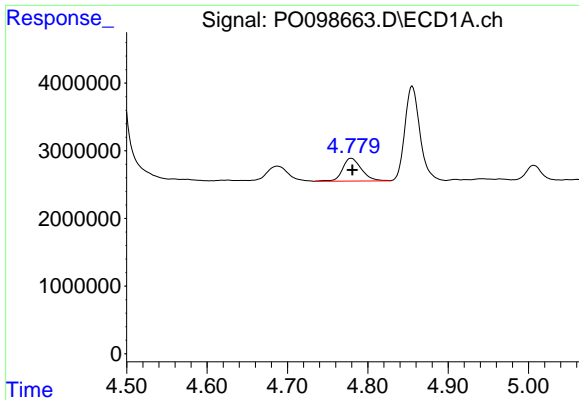
#8 AR-1221-1

R.T.: 4.688 min
 Delta R.T.: -0.007 min
 Response: 3934317
 Conc: 174.74 ng/ml



#8 AR-1221-1

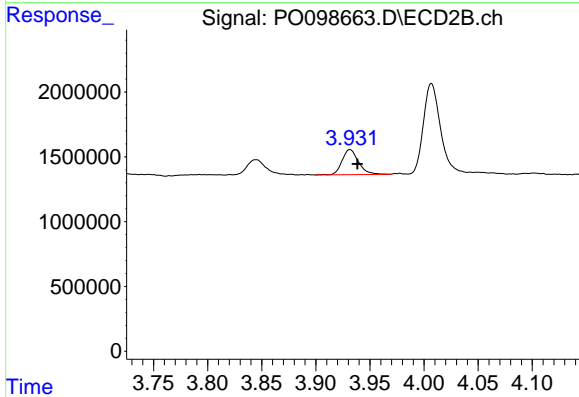
R.T.: 3.845 min
 Delta R.T.: -0.008 min
 Response: 1572337
 Conc: 171.14 ng/ml



#9 AR-1221-2

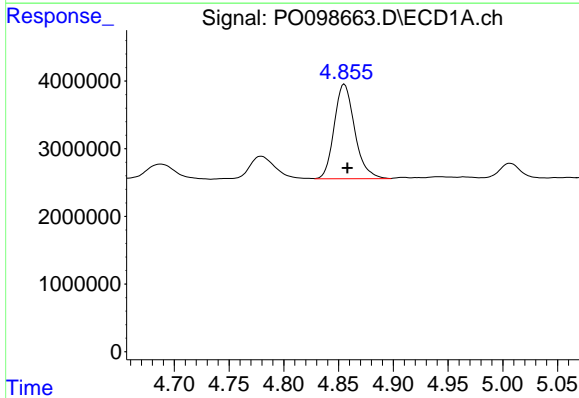
R.T.: 4.779 min
 Delta R.T.: -0.002 min
 Response: 5511838
 Conc: 326.67 ng/ml

Instrument :
 ECD_O
 ClientSampleId :



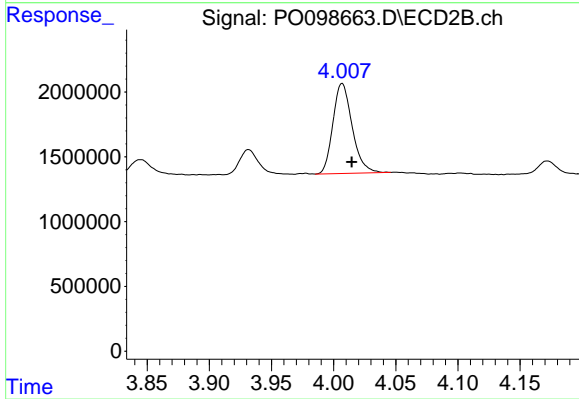
#9 AR-1221-2

R.T.: 3.932 min
 Delta R.T.: -0.007 min
 Response: 2045144
 Conc: 307.56 ng/ml



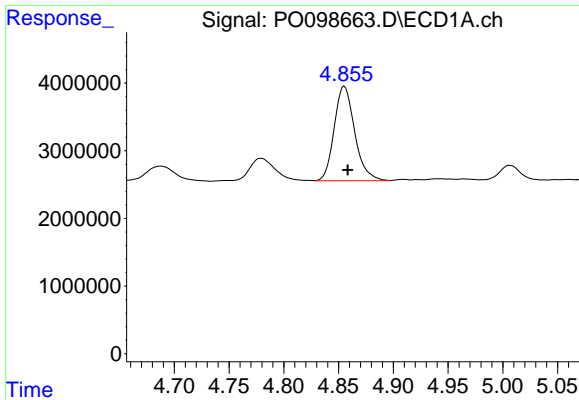
#10 AR-1221-3

R.T.: 4.855 min
 Delta R.T.: -0.003 min
 Response: 18213942
 Conc: 372.41 ng/ml



#10 AR-1221-3

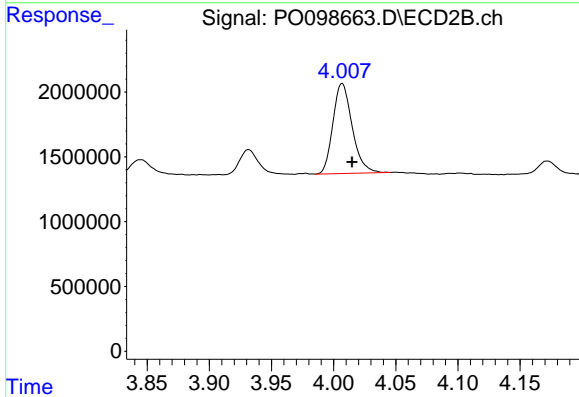
R.T.: 4.007 min
 Delta R.T.: -0.008 min
 Response: 7492111
 Conc: 371.40 ng/ml



#11 AR-1232-1

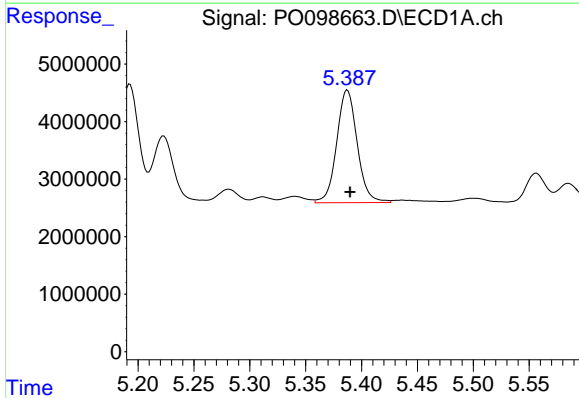
R.T.: 4.855 min
 Delta R.T.: -0.003 min
 Response: 18213942
 Conc: 445.91 ng/ml

Instrument :
 ECD_O
 ClientSampleId :



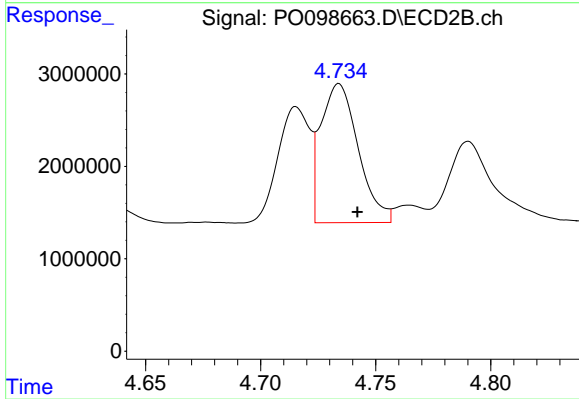
#11 AR-1232-1

R.T.: 4.007 min
 Delta R.T.: -0.008 min
 Response: 7492111
 Conc: 445.75 ng/ml



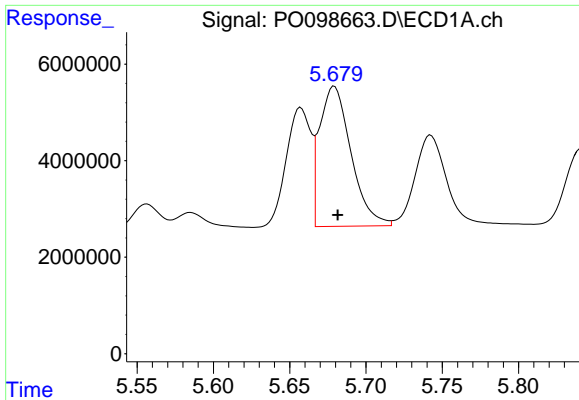
#12 AR-1232-2

R.T.: 5.387 min
 Delta R.T.: -0.002 min
 Response: 25086321
 Conc: 1159.91 ng/ml



#12 AR-1232-2

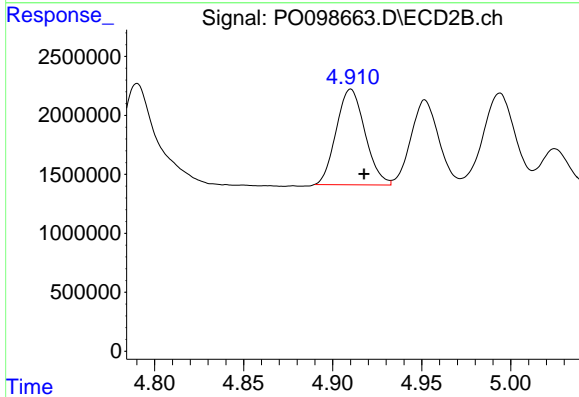
R.T.: 4.734 min
 Delta R.T.: -0.008 min
 Response: 17052576
 Conc: 1134.84 ng/ml



#13 AR-1232-3

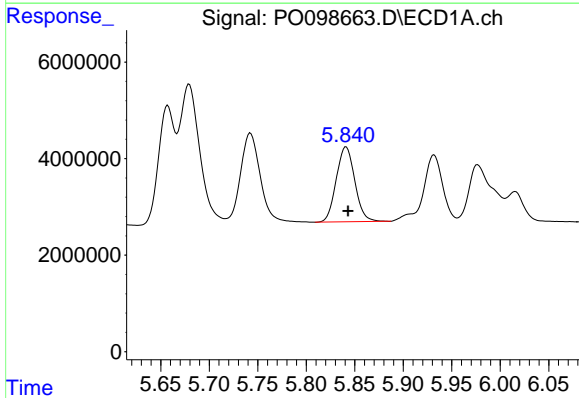
R.T.: 5.679 min
 Delta R.T.: -0.002 min
 Response: 41721541
 Conc: 1173.65 ng/ml

Instrument :
 ECD_O
 ClientSampleId :



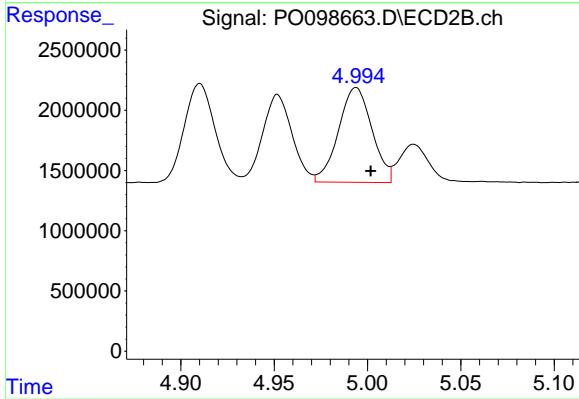
#13 AR-1232-3

R.T.: 4.910 min
 Delta R.T.: -0.007 min
 Response: 9119362
 Conc: 1165.17 ng/ml



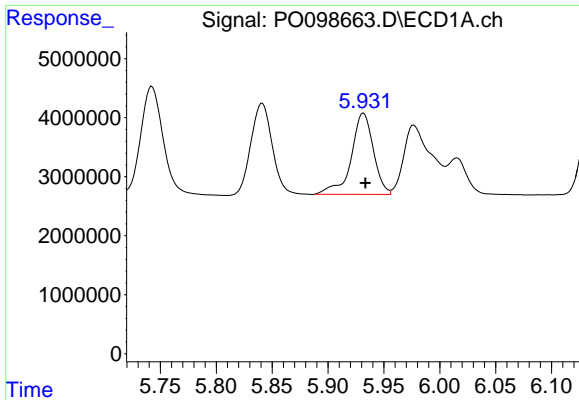
#14 AR-1232-4

R.T.: 5.841 min
 Delta R.T.: -0.002 min
 Response: 20710340
 Conc: 1219.93 ng/ml



#14 AR-1232-4

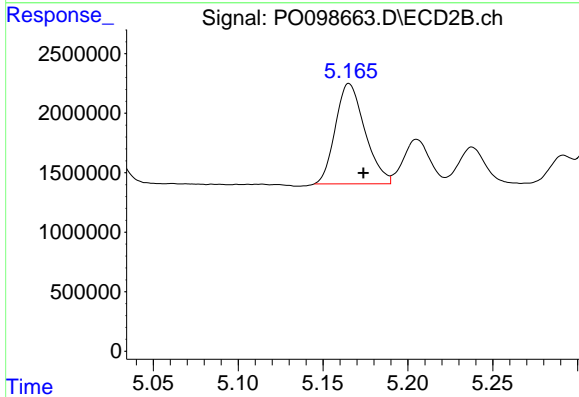
R.T.: 4.994 min
 Delta R.T.: -0.008 min
 Response: 9825953
 Conc: 1306.79 ng/ml



#15 AR-1232-5

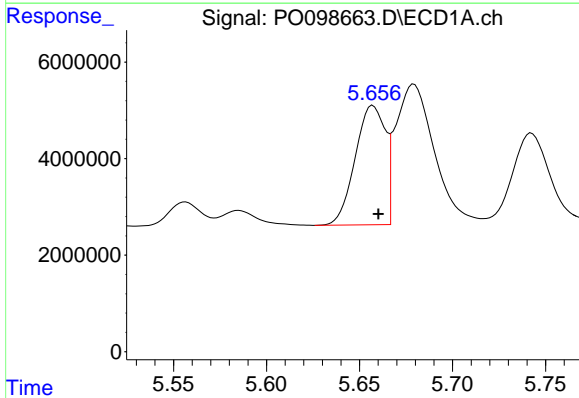
R.T.: 5.932 min
 Delta R.T.: -0.002 min
 Response: 18981555
 Conc: 1333.18 ng/ml

Instrument :
 ECD_O
 ClientSampleId :



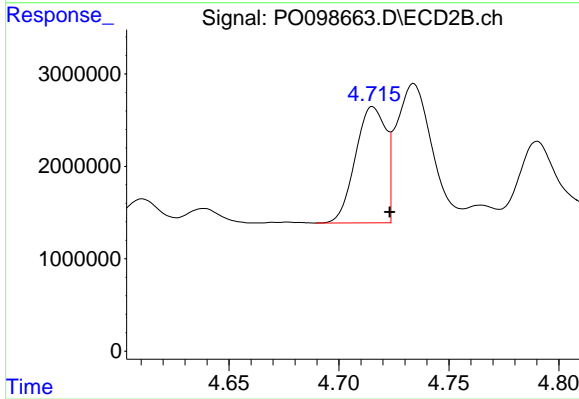
#15 AR-1232-5

R.T.: 5.165 min
 Delta R.T.: -0.008 min
 Response: 10204770
 Conc: 1261.45 ng/ml



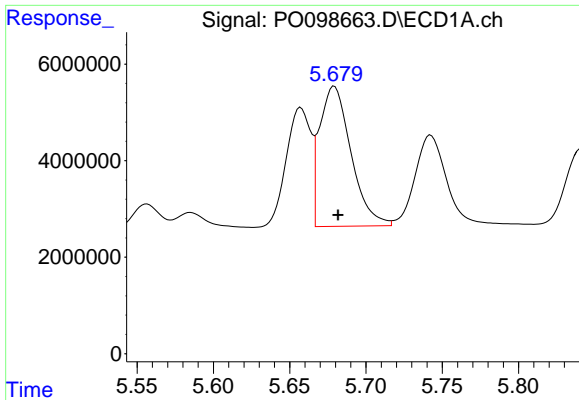
#16 AR-1242-1

R.T.: 5.657 min
 Delta R.T.: -0.003 min
 Response: 27725510
 Conc: 608.86 ng/ml



#16 AR-1242-1

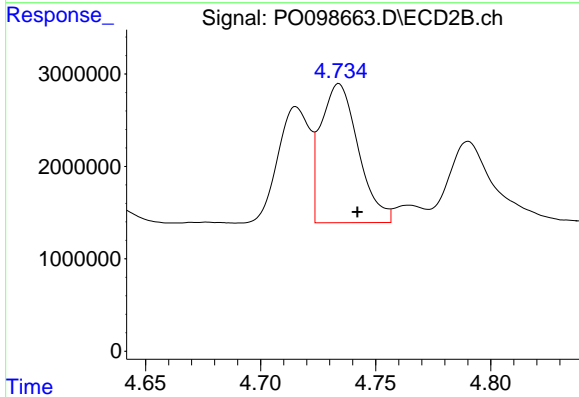
R.T.: 4.715 min
 Delta R.T.: -0.008 min
 Response: 12099710
 Conc: 577.94 ng/ml



#17 AR-1242-2

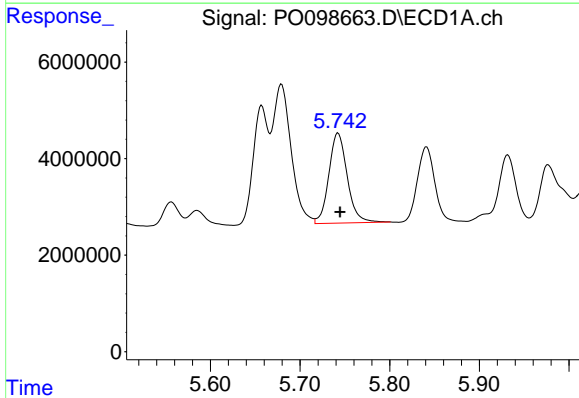
R.T.: 5.679 min
Delta R.T.: -0.003 min
Response: 41721541
Conc: 609.16 ng/ml

Instrument :
ECD_O
ClientSampleId :



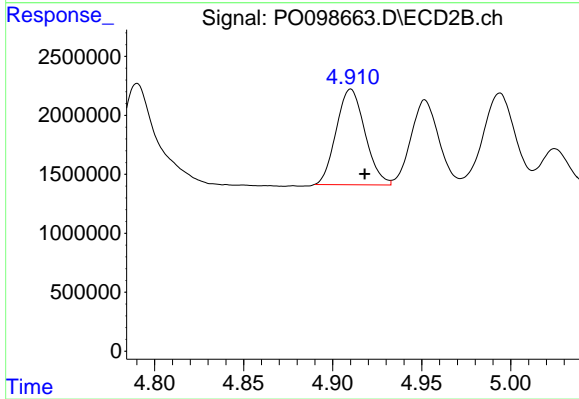
#17 AR-1242-2

R.T.: 4.734 min
Delta R.T.: -0.008 min
Response: 17052576
Conc: 586.46 ng/ml



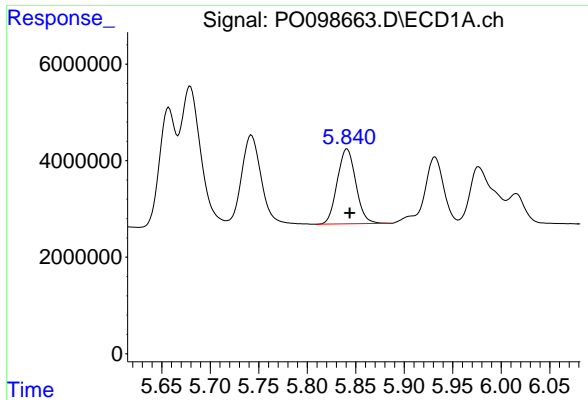
#18 AR-1242-3

R.T.: 5.742 min
Delta R.T.: -0.002 min
Response: 26570421
Conc: 627.46 ng/ml



#18 AR-1242-3

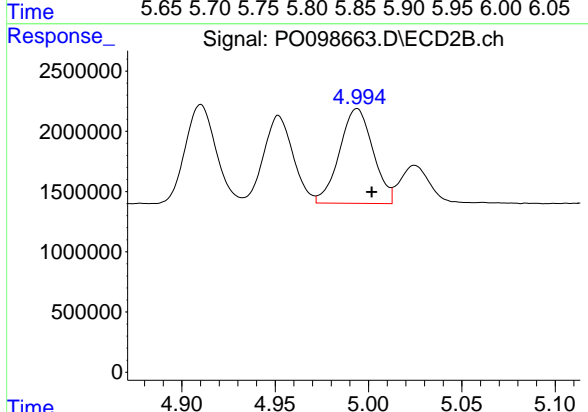
R.T.: 4.910 min
Delta R.T.: -0.008 min
Response: 9119362
Conc: 583.52 ng/ml



#19 AR-1242-4

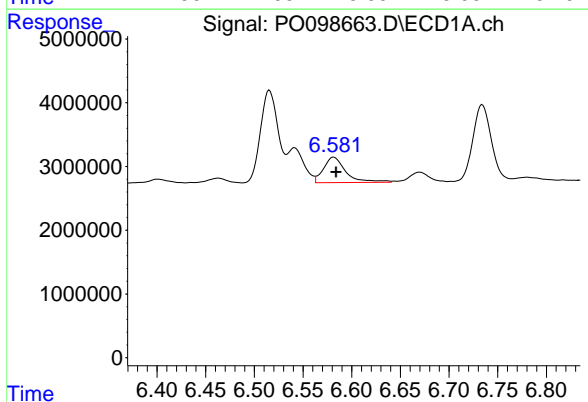
R.T.: 5.841 min
 Delta R.T.: -0.003 min
 Response: 20710340
 Conc: 631.20 ng/ml

Instrument :
 ECD_O
 ClientSampleId :



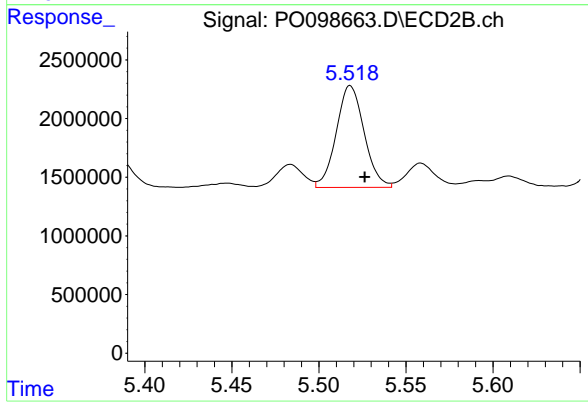
#19 AR-1242-4

R.T.: 4.994 min
 Delta R.T.: -0.008 min
 Response: 9825953
 Conc: 593.27 ng/ml



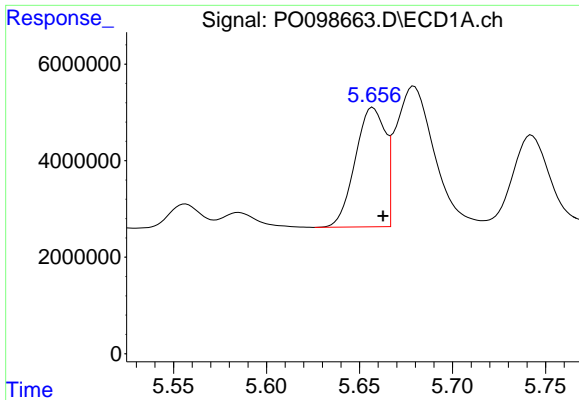
#20 AR-1242-5

R.T.: 6.582 min
 Delta R.T.: -0.002 min
 Response: 6381598
 Conc: 180.16 ng/ml



#20 AR-1242-5

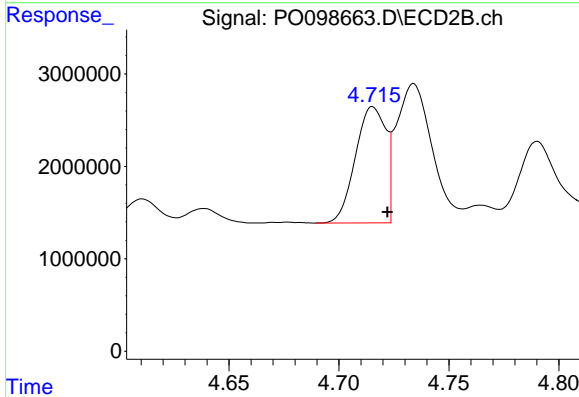
R.T.: 5.518 min
 Delta R.T.: -0.008 min
 Response: 9673368
 Conc: 521.24 ng/ml



#21 AR-1248-1

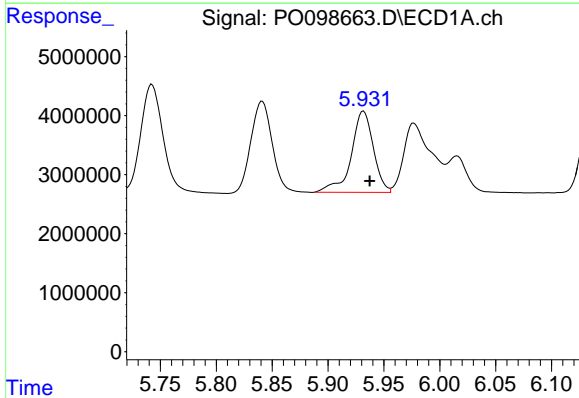
R.T.: 5.657 min
 Delta R.T.: -0.005 min
 Response: 27725510
 Conc: 819.24 ng/ml

Instrument :
 ECD_O
 ClientSampleId :



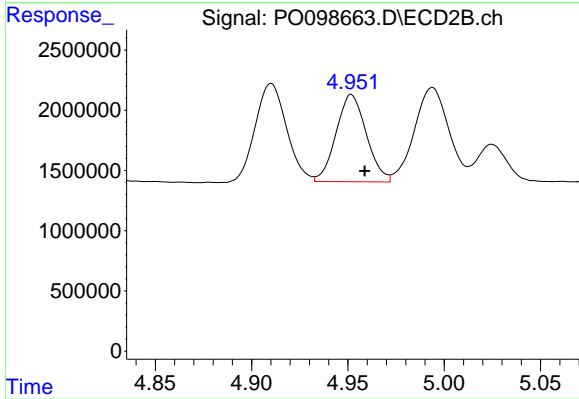
#21 AR-1248-1

R.T.: 4.715 min
 Delta R.T.: -0.007 min
 Response: 12099710
 Conc: 772.10 ng/ml



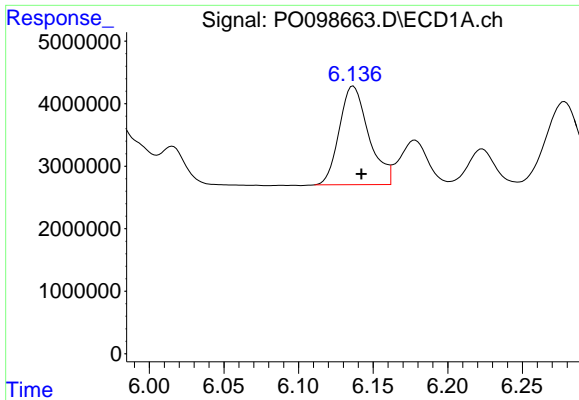
#22 AR-1248-2

R.T.: 5.932 min
 Delta R.T.: -0.006 min
 Response: 18981555
 Conc: 366.52 ng/ml



#22 AR-1248-2

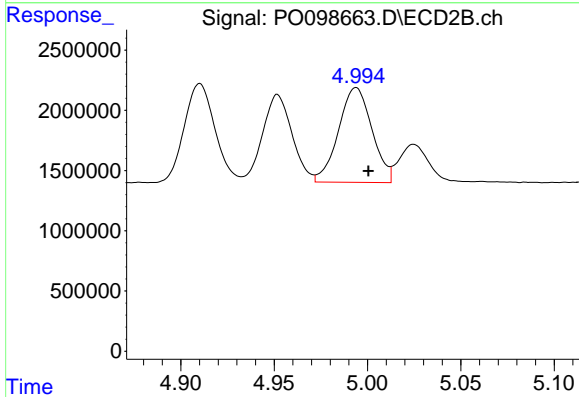
R.T.: 4.952 min
 Delta R.T.: -0.007 min
 Response: 7926178
 Conc: 360.17 ng/ml



#23 AR-1248-3

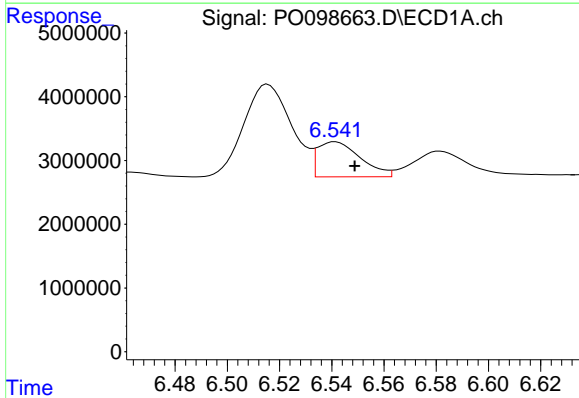
R.T.: 6.137 min
 Delta R.T.: -0.005 min
 Response: 21607250
 Conc: 382.34 ng/ml

Instrument :
 ECD_O
 ClientSampleId :



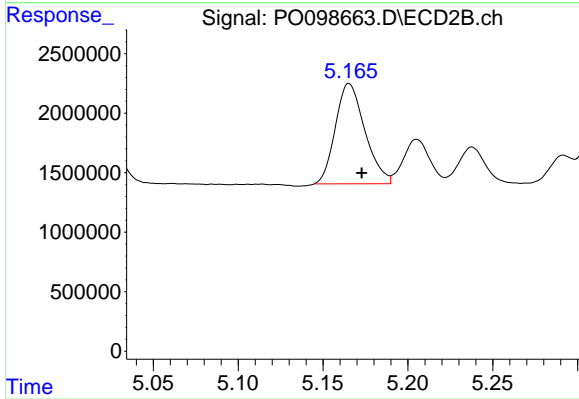
#23 AR-1248-3

R.T.: 4.994 min
 Delta R.T.: -0.007 min
 Response: 9825953
 Conc: 418.49 ng/ml



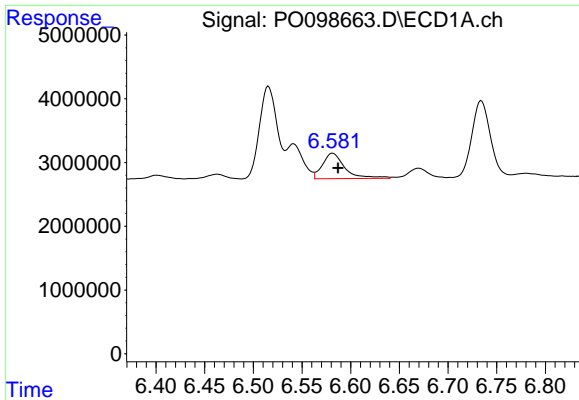
#24 AR-1248-4

R.T.: 6.541 min
 Delta R.T.: -0.007 min
 Response: 6261191
 Conc: 110.45 ng/ml



#24 AR-1248-4

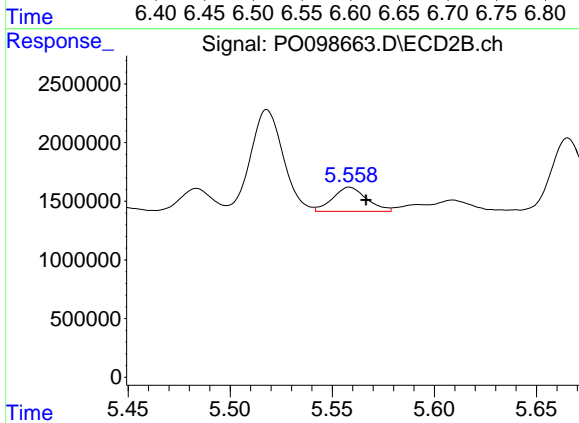
R.T.: 5.165 min
 Delta R.T.: -0.007 min
 Response: 10204770
 Conc: 382.57 ng/ml



#25 AR-1248-5

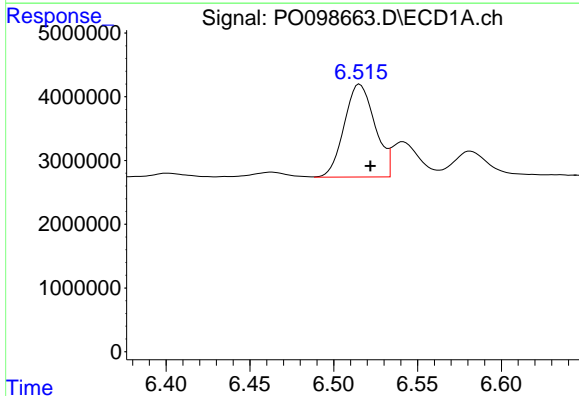
R.T.: 6.582 min
 Delta R.T.: -0.005 min
 Response: 6381598
 Conc: 107.89 ng/ml

Instrument :
 ECD_O
 ClientSampleId :



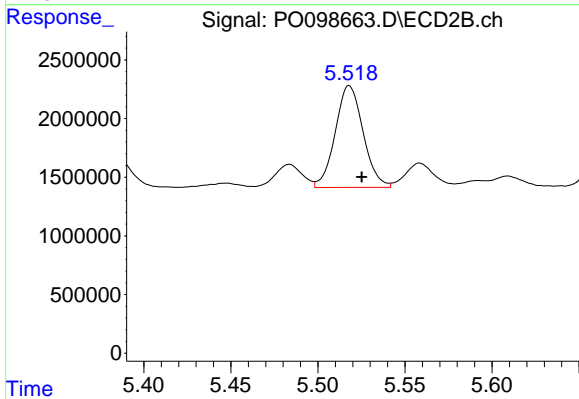
#25 AR-1248-5

R.T.: 5.559 min
 Delta R.T.: -0.008 min
 Response: 2379542
 Conc: 100.84 ng/ml



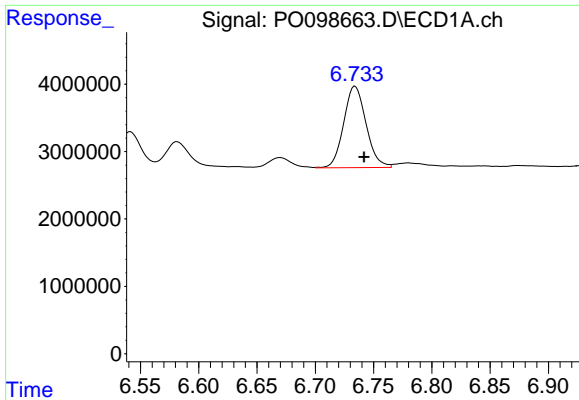
#26 AR-1254-1

R.T.: 6.516 min
 Delta R.T.: -0.006 min
 Response: 18596468
 Conc: 294.42 ng/ml



#26 AR-1254-1

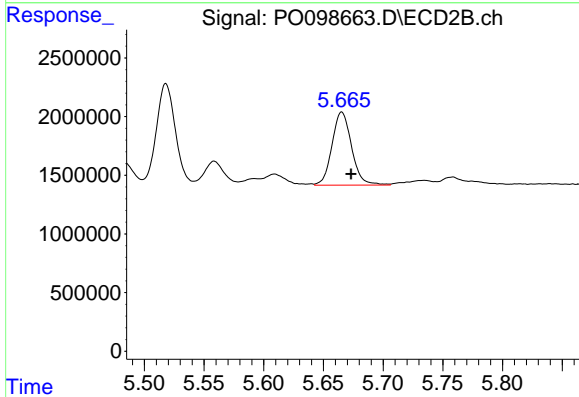
R.T.: 5.518 min
 Delta R.T.: -0.007 min
 Response: 9673368
 Conc: 252.28 ng/ml



#27 AR-1254-2

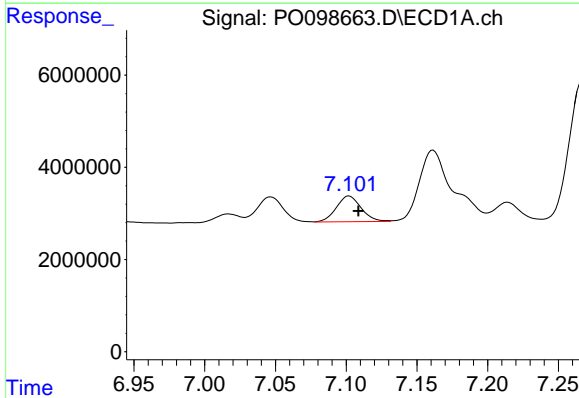
R.T.: 6.734 min
Delta R.T.: -0.008 min
Response: 16164017
Conc: 168.43 ng/ml

Instrument :
ECD_O
ClientSampleId :



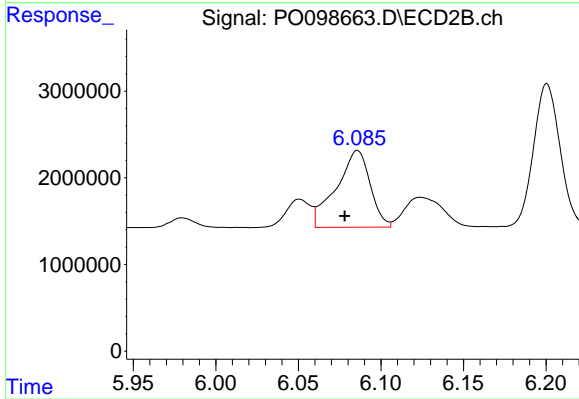
#27 AR-1254-2

R.T.: 5.665 min
Delta R.T.: -0.008 min
Response: 7123979
Conc: 206.93 ng/ml



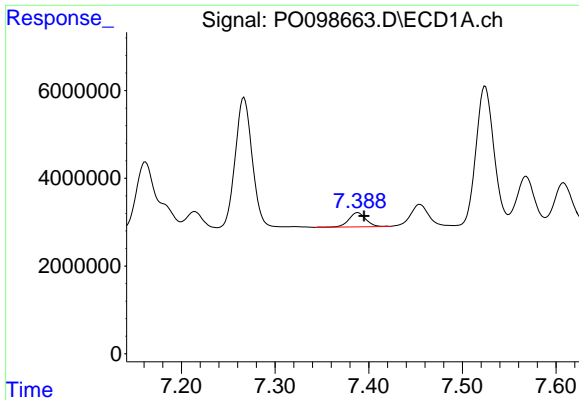
#28 AR-1254-3

R.T.: 7.102 min
Delta R.T.: -0.007 min
Response: 6763548
Conc: 71.88 ng/ml



#28 AR-1254-3

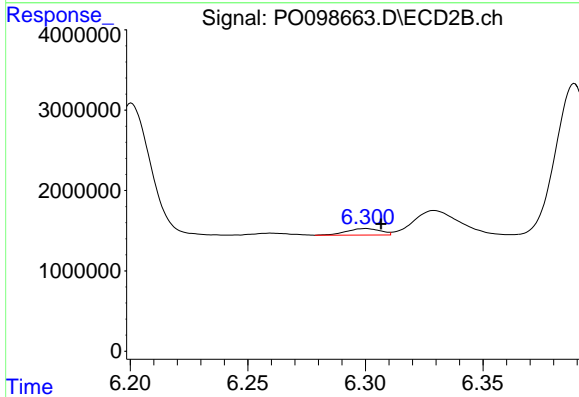
R.T.: 6.086 min
Delta R.T.: 0.008 min
Response: 12680780
Conc: 244.04 ng/ml



#29 AR-1254-4

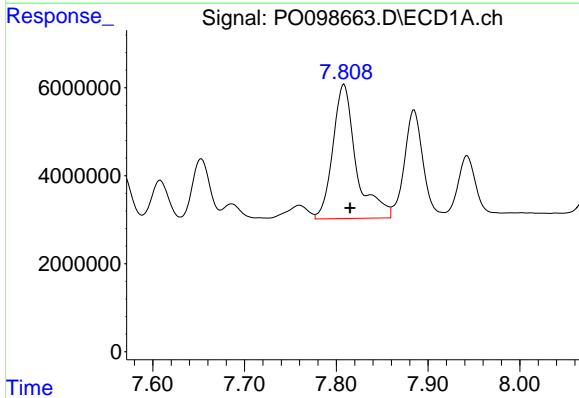
R.T.: 7.388 min
 Delta R.T.: -0.007 min
 Response: 4059202
 Conc: 69.72 ng/ml

Instrument :
 ECD_O
 ClientSampleId :



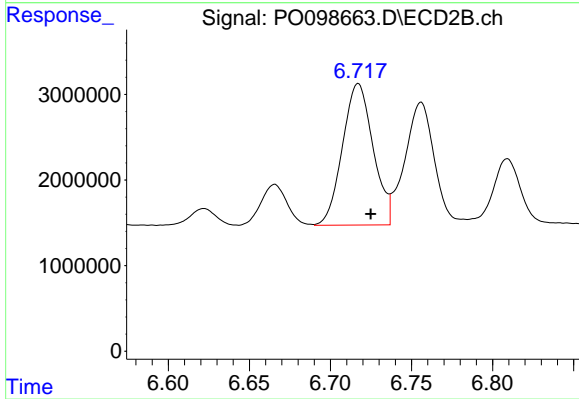
#29 AR-1254-4

R.T.: 6.300 min
 Delta R.T.: -0.007 min
 Response: 809937
 Conc: 29.51 ng/ml



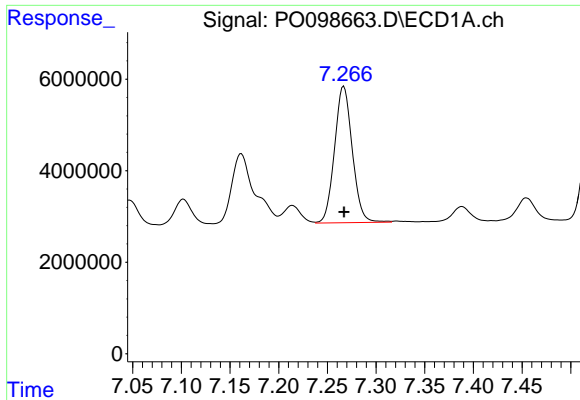
#30 AR-1254-5

R.T.: 7.808 min
 Delta R.T.: -0.007 min
 Response: 53996610
 Conc: 773.09 ng/ml



#30 AR-1254-5

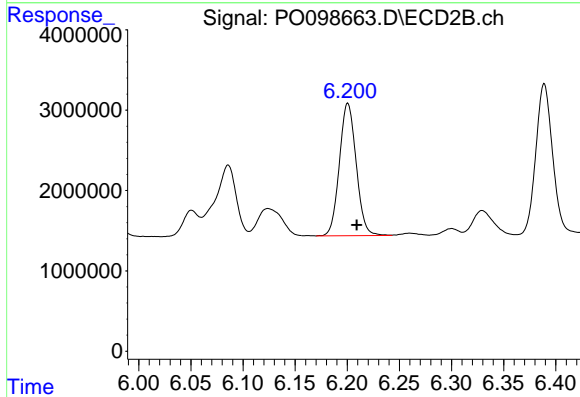
R.T.: 6.717 min
 Delta R.T.: -0.008 min
 Response: 21726792
 Conc: 501.57 ng/ml



#31 AR-1260-1

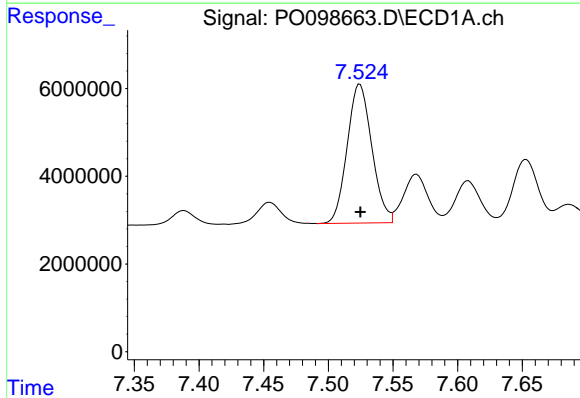
R.T.: 7.267 min
 Delta R.T.: 0.000 min
 Response: 37850685
 Conc: 520.54 ng/ml

Instrument :
 ECD_O
 ClientSampleId :



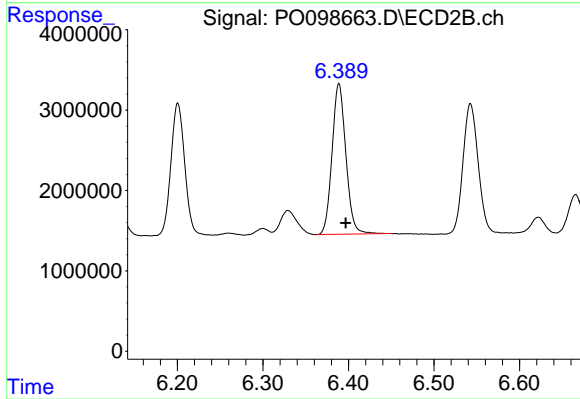
#31 AR-1260-1

R.T.: 6.201 min
 Delta R.T.: -0.008 min
 Response: 18506447
 Conc: 504.39 ng/ml



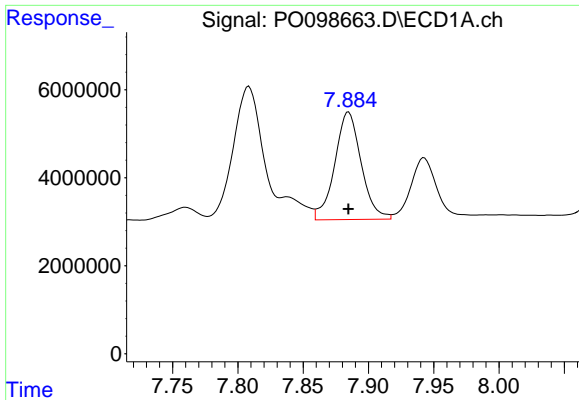
#32 AR-1260-2

R.T.: 7.524 min
 Delta R.T.: 0.000 min
 Response: 42055067
 Conc: 510.74 ng/ml



#32 AR-1260-2

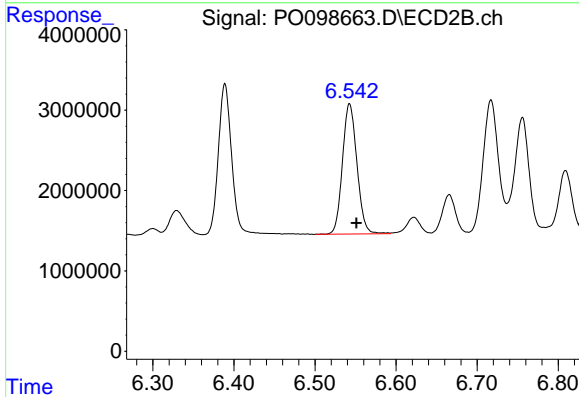
R.T.: 6.389 min
 Delta R.T.: -0.008 min
 Response: 21052932
 Conc: 501.73 ng/ml



#33 AR-1260-3

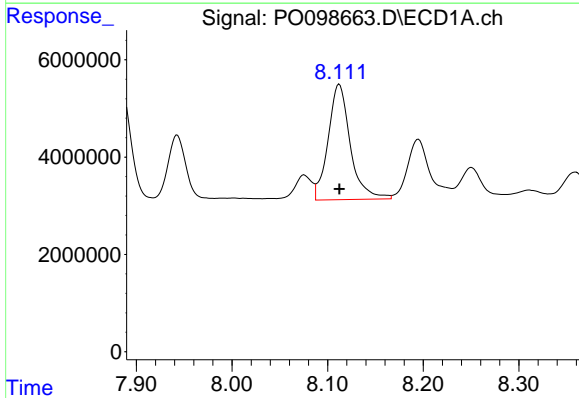
R.T.: 7.885 min
 Delta R.T.: 0.000 min
 Response: 34425688
 Conc: 556.49 ng/ml

Instrument :
 ECD_O
 ClientSampleId :



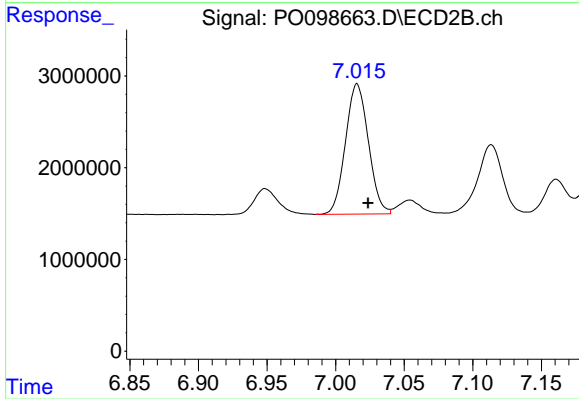
#33 AR-1260-3

R.T.: 6.543 min
 Delta R.T.: -0.008 min
 Response: 20164911
 Conc: 503.91 ng/ml



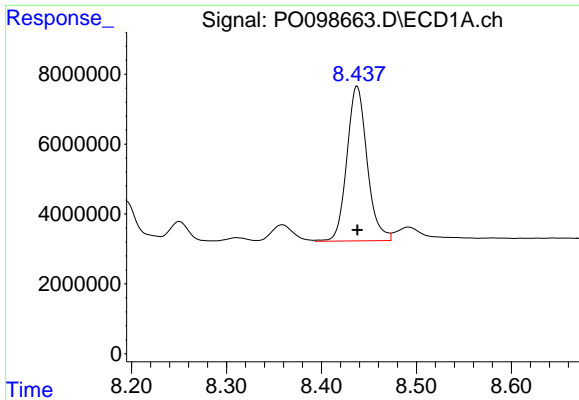
#34 AR-1260-4

R.T.: 8.112 min
 Delta R.T.: 0.000 min
 Response: 38246774
 Conc: 567.35 ng/ml



#34 AR-1260-4

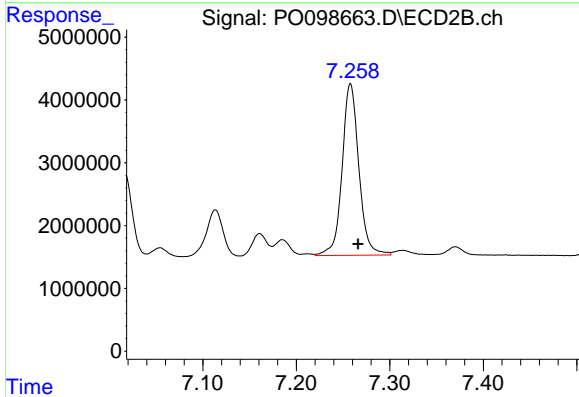
R.T.: 7.016 min
 Delta R.T.: -0.008 min
 Response: 16506442
 Conc: 512.57 ng/ml



#35 AR-1260-5

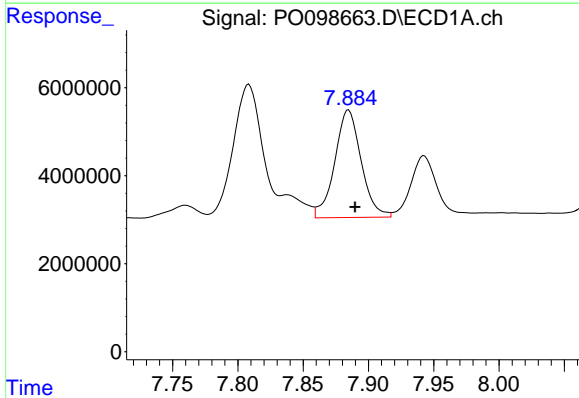
R.T.: 8.438 min
 Delta R.T.: 0.000 min
 Response: 65744179
 Conc: 506.04 ng/ml

Instrument :
 ECD_O
 ClientSampleId :



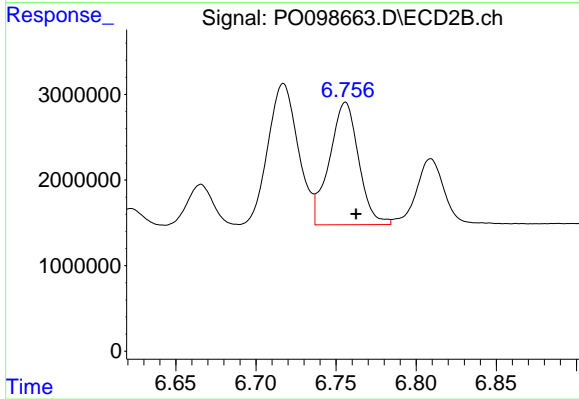
#35 AR-1260-5

R.T.: 7.258 min
 Delta R.T.: -0.008 min
 Response: 34006320
 Conc: 485.39 ng/ml



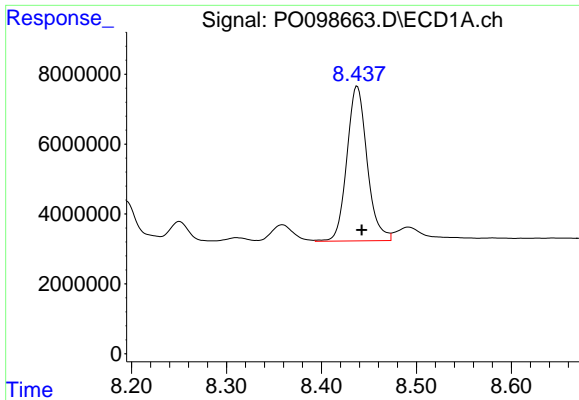
#36 AR-1262-1

R.T.: 7.885 min
 Delta R.T.: -0.005 min
 Response: 34425688
 Conc: 395.83 ng/ml



#36 AR-1262-1

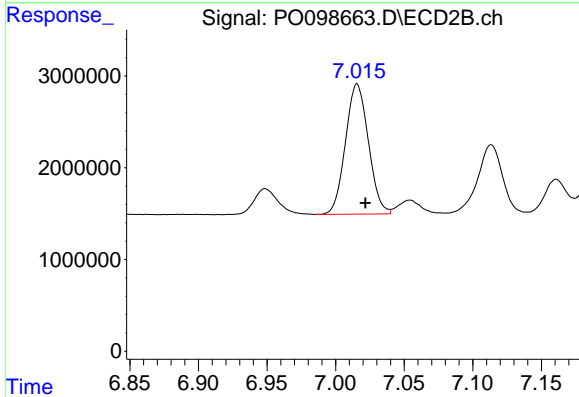
R.T.: 6.756 min
 Delta R.T.: -0.007 min
 Response: 18220285
 Conc: 402.54 ng/ml



#37 AR-1262-2

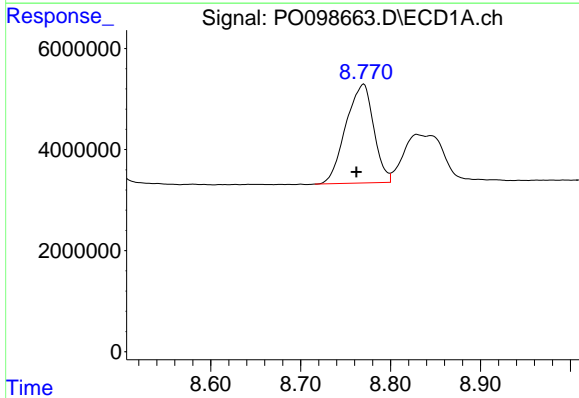
R.T.: 8.438 min
 Delta R.T.: -0.005 min
 Response: 65744179
 Conc: 466.09 ng/ml

Instrument :
 ECD_O
 ClientSampleId :



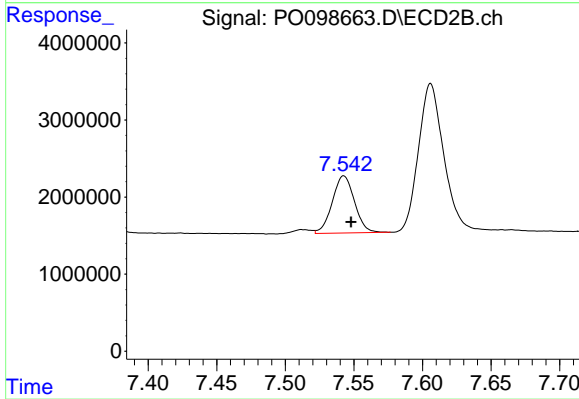
#37 AR-1262-2

R.T.: 7.016 min
 Delta R.T.: -0.006 min
 Response: 16506442
 Conc: 409.35 ng/ml



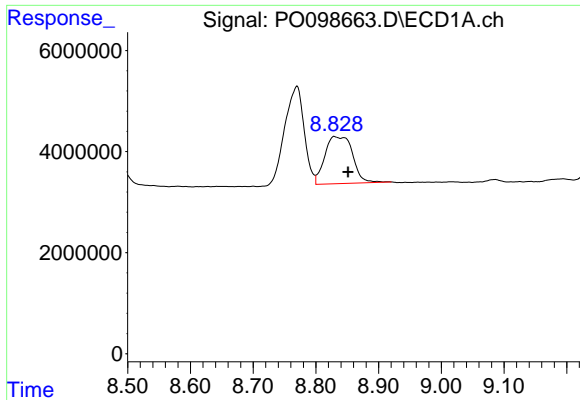
#38 AR-1262-3

R.T.: 8.770 min
 Delta R.T.: 0.008 min
 Response: 42097123
 Conc: 426.38 ng/ml



#38 AR-1262-3

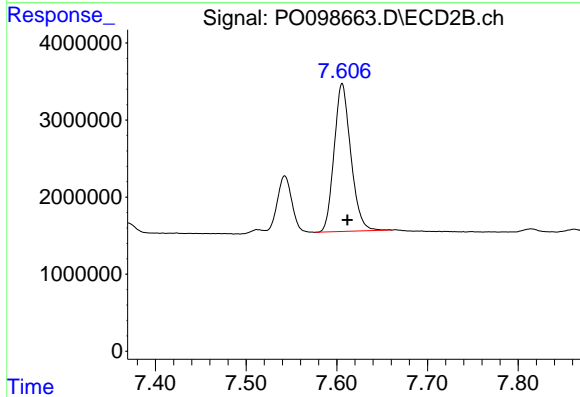
R.T.: 7.543 min
 Delta R.T.: -0.005 min
 Response: 8338140
 Conc: 268.59 ng/ml



#39 AR-1262-4

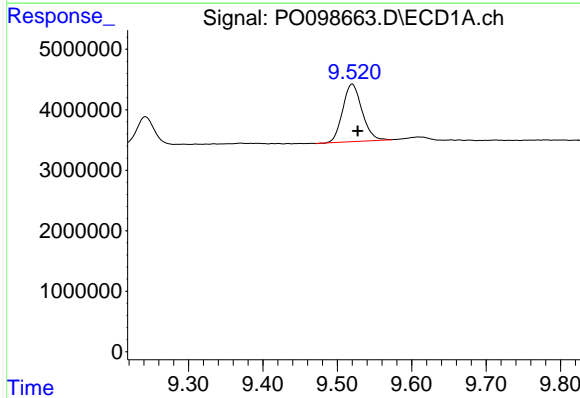
R.T.: 8.830 min
 Delta R.T.: -0.021 min
 Response: 28607234
 Conc: 372.77 ng/ml

Instrument :
 ECD_O
 ClientSampleId :



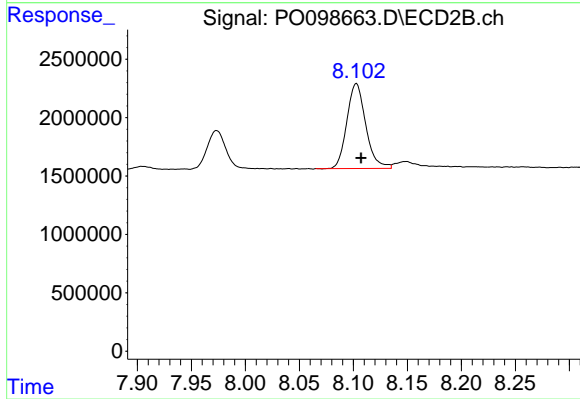
#39 AR-1262-4

R.T.: 7.606 min
 Delta R.T.: -0.006 min
 Response: 24519804
 Conc: 452.62 ng/ml



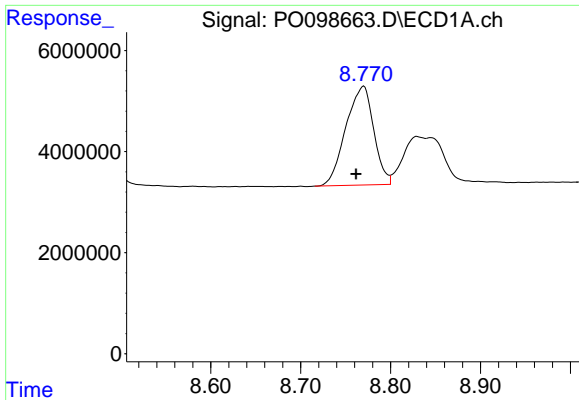
#40 AR-1262-5

R.T.: 9.520 min
 Delta R.T.: -0.007 min
 Response: 17145978
 Conc: 353.47 ng/ml



#40 AR-1262-5

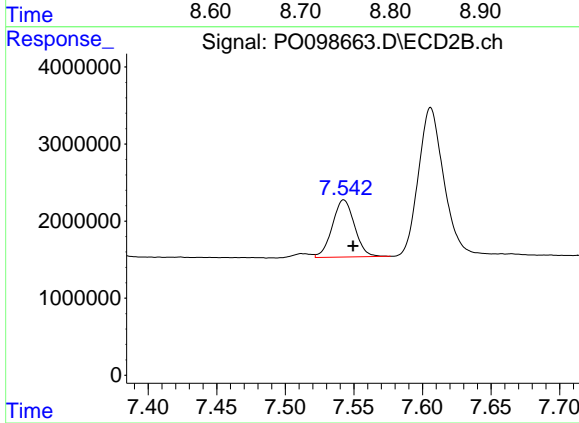
R.T.: 8.103 min
 Delta R.T.: -0.004 min
 Response: 8844808
 Conc: 358.16 ng/ml



#41 AR-1268-1

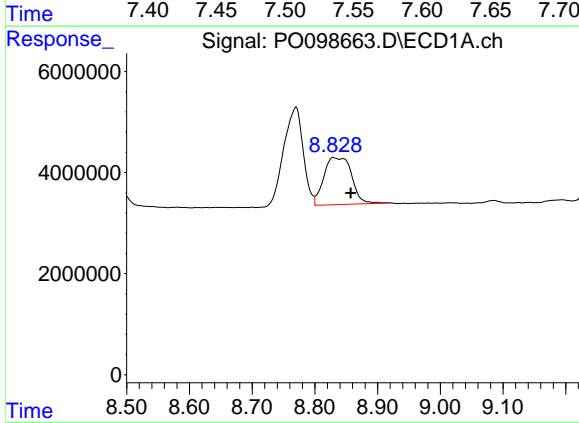
R.T.: 8.770 min
 Delta R.T.: 0.008 min
 Response: 42097123
 Conc: 242.43 ng/ml

Instrument :
 ECD_O
 ClientSampleId :



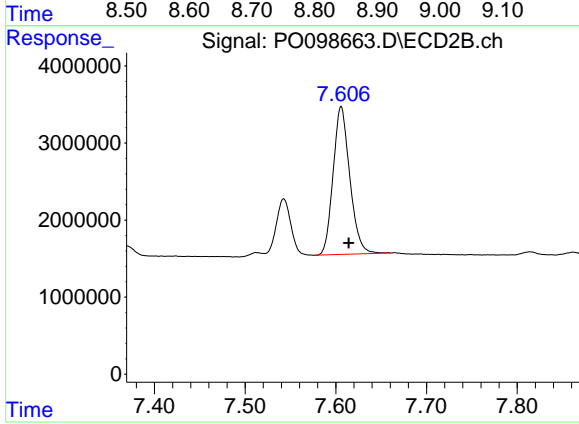
#41 AR-1268-1

R.T.: 7.543 min
 Delta R.T.: -0.007 min
 Response: 8338140
 Conc: 91.25 ng/ml



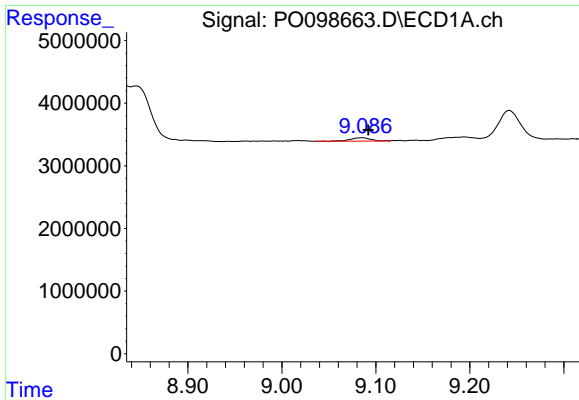
#42 AR-1268-2

R.T.: 8.830 min
 Delta R.T.: -0.027 min
 Response: 28607234
 Conc: 183.47 ng/ml



#42 AR-1268-2

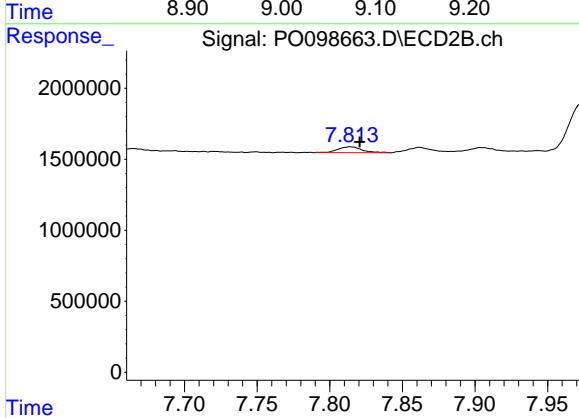
R.T.: 7.606 min
 Delta R.T.: -0.009 min
 Response: 24519804
 Conc: 316.23 ng/ml



#43 AR-1268-3

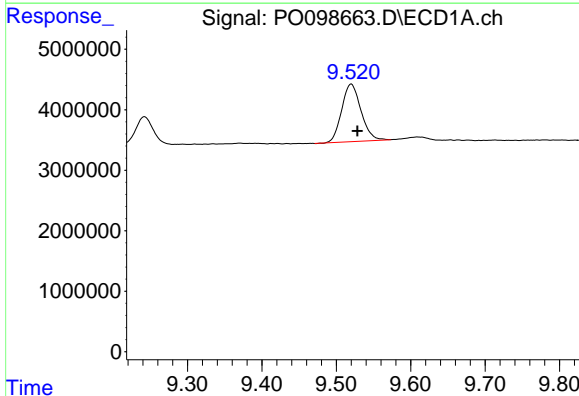
R.T.: 9.085 min
 Delta R.T.: -0.007 min
 Response: 789106
 Conc: 5.77 ng/ml

Instrument :
 ECD_O
 ClientSampleId :



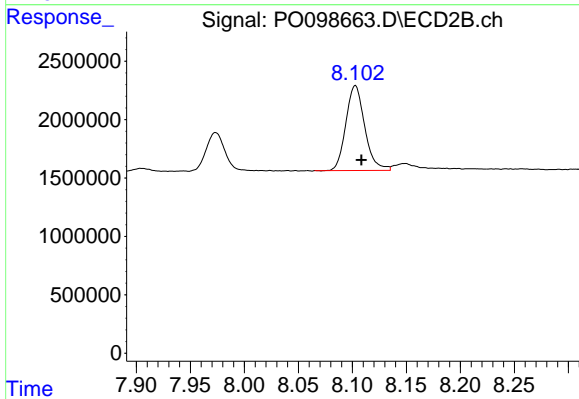
#43 AR-1268-3

R.T.: 7.814 min
 Delta R.T.: -0.006 min
 Response: 481872
 Conc: 7.27 ng/ml



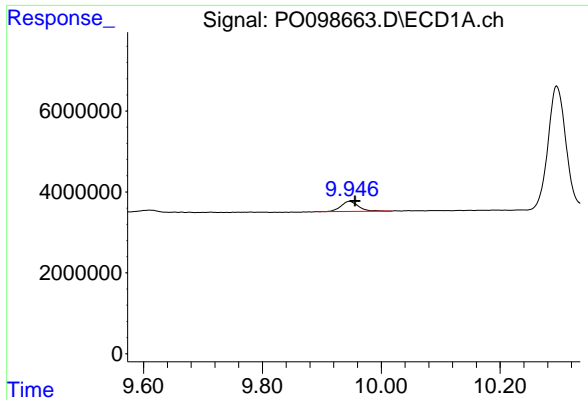
#44 AR-1268-4

R.T.: 9.520 min
 Delta R.T.: -0.008 min
 Response: 17145978
 Conc: 321.87 ng/ml



#44 AR-1268-4

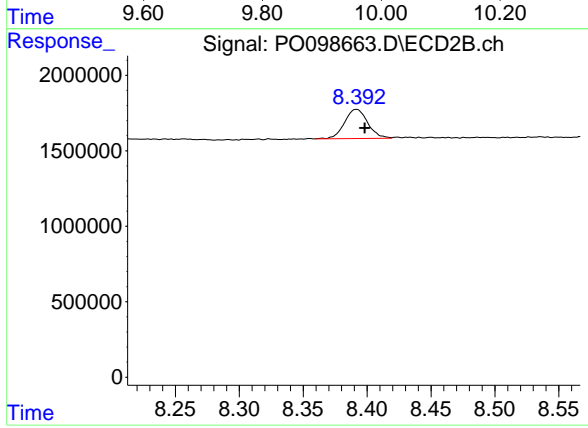
R.T.: 8.103 min
 Delta R.T.: -0.006 min
 Response: 8844808
 Conc: 326.76 ng/ml



#45 AR-1268-5

R.T.: 9.947 min
 Delta R.T.: -0.009 min
 Response: 5137338
 Conc: 11.70 ng/ml

Instrument :
 ECD_O
 ClientSampleId :



#45 AR-1268-5

R.T.: 8.392 min
 Delta R.T.: -0.006 min
 Response: 2439230
 Conc: 12.32 ng/ml