

Data Path : Z:\pestpcbsrv\HPCHEM1\ECD_0\Data\PO101223\
 Data File : PO098730.D
 Signal(s) : Signal #1: ECD1A.ch Signal #2: ECD2B.ch
 Acq On : 12 Oct 2023 11:05
 Operator : YP/AJ
 Sample : AR1660CCC500
 Misc :
 ALS Vial : 3 Sample Multiplier: 1

Instrument :
 ECD_0
 ClientSampleId :
 AR1660CCC500

Integration File signal 1: autoint1.e
 Integration File signal 2: autoint2.e
 Quant Time: Oct 12 15:16:20 2023
 Quant Method : Z:\pestpcbsrv\HPCHEM1\ECD_0\methods\PO092723.M
 Quant Title : GC EXTRACTABLES
 QLast Update : Thu Sep 28 01:18:56 2023
 Response via : Initial Calibration
 Integrator: ChemStation

Volume Inj. : 2 µl
 Signal #1 Phase : ZB-MR1 Signal #2 Phase: ZB-MR2
 Signal #1 Info : 30Mx0.32mmx 0.50µ Signal #2 Info : 30M x 0.32mm x 0.25µm

Compound	RT#1	RT#2	Resp#1	Resp#2	ng/ml	ng/ml

System Monitoring Compounds						
1) SA Tetrachlo...	4.479	3.633	97364199	38647711	50.706	49.621
2) SA Decachlor...	10.289	8.638	63903236	27310724	52.644	50.975
Target Compounds						
3) L1 AR-1016-1	5.654	4.716	28458589	12062399	526.584	505.374
4) L1 AR-1016-2	5.676	4.734	42507421	16916768	523.568	496.811
5) L1 AR-1016-3	5.739	4.910	27268517	9189480	545.011	510.850
6) L1 AR-1016-4	5.837	4.952	21293093	7772323	544.558	518.456
7) L1 AR-1016-5	6.133	5.165	21145212	9938253	514.220	511.743
31) L7 AR-1260-1	7.264	6.199	38667550	18513641	531.769	504.589
32) L7 AR-1260-2	7.520	6.388	43001106	21408385	522.233	510.203
33) L7 AR-1260-3	7.881	6.542	33667801	20245155	544.236	505.913
34) L7 AR-1260-4	8.108	7.013	37936224	16610680	562.747	515.810
35) L7 AR-1260-5	8.434	7.256	68964011	35141194	530.820	501.584

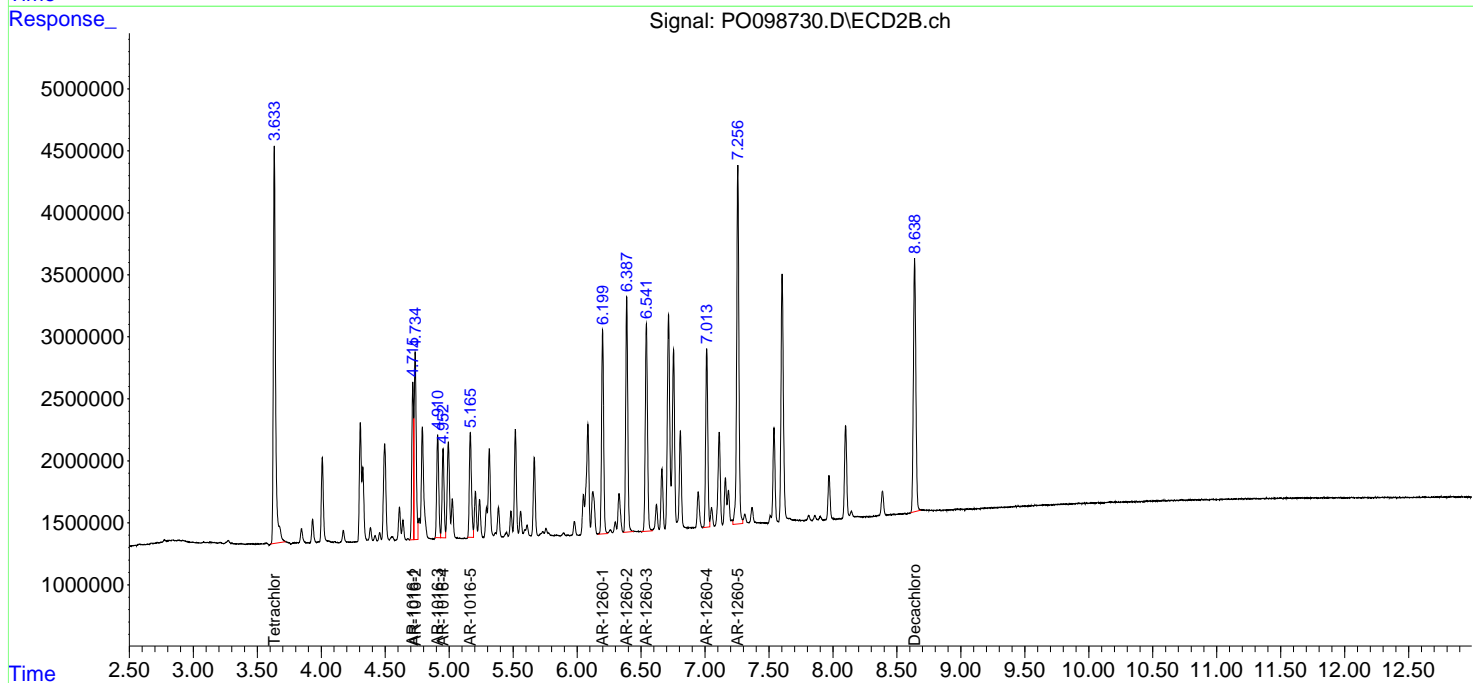
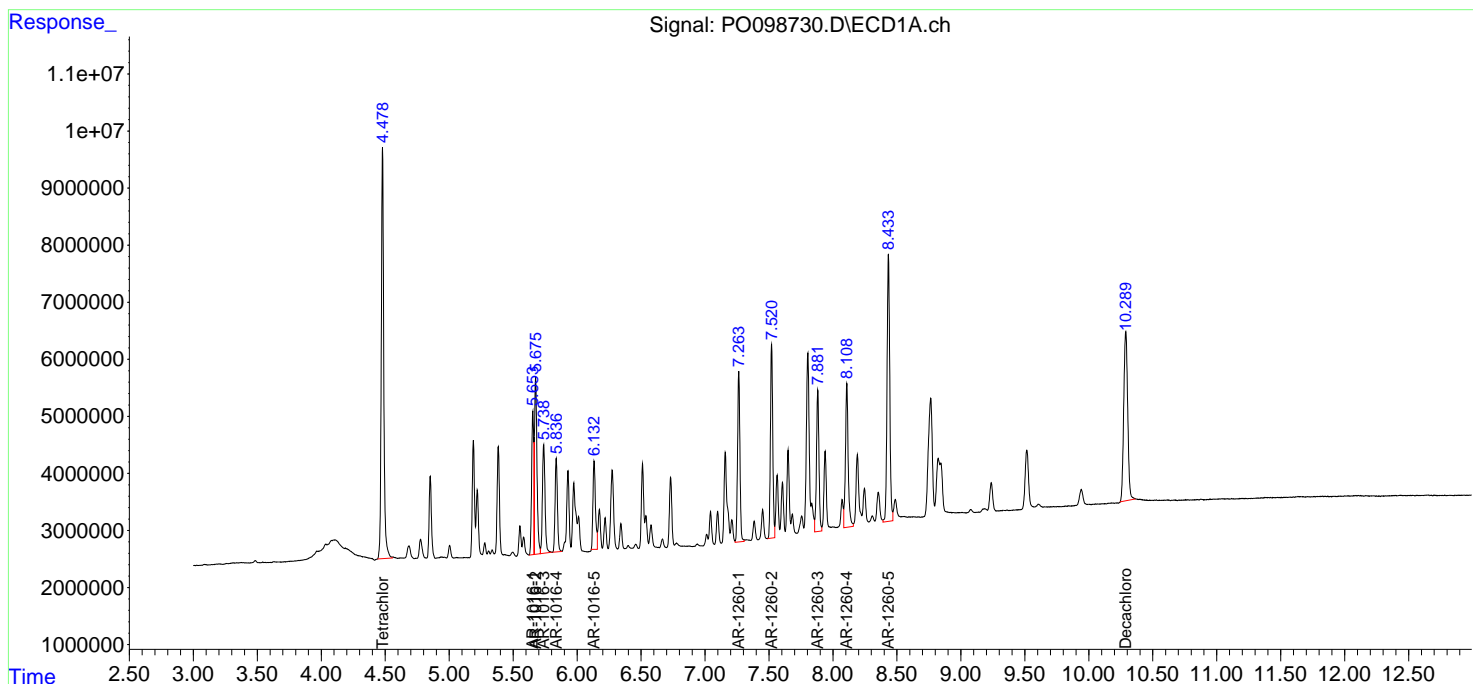
(f)=RT Delta > 1/2 Window (#)=Amounts differ by > 25% (m)=manual int.

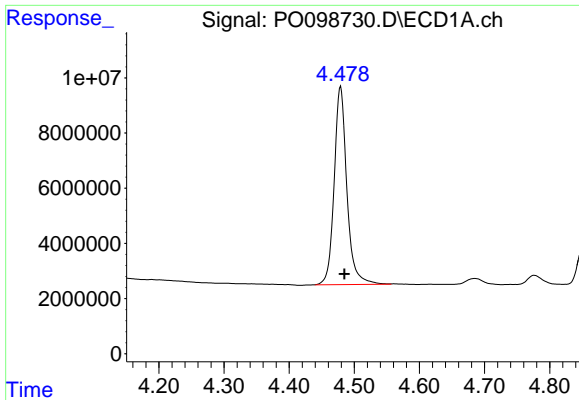
Data Path : Z:\pestpcbsrv\HPCHEM1\ECD_O\Data\PO101223\
 Data File : PO098730.D
 Signal(s) : Signal #1: ECD1A.ch Signal #2: ECD2B.ch
 Acq On : 12 Oct 2023 11:05
 Operator : YP/AJ
 Sample : AR1660CCC500
 Misc :
 ALS Vial : 3 Sample Multiplier: 1

Instrument :
 ECD_O
 ClientSampleId :
 AR1660CCC500

Integration File signal 1: autoint1.e
 Integration File signal 2: autoint2.e
 Quant Time: Oct 12 15:16:20 2023
 Quant Method : Z:\pestpcbsrv\HPCHEM1\ECD_O\methods\PO092723.M
 Quant Title : GC EXTRACTABLES
 QLast Update : Thu Sep 28 01:18:56 2023
 Response via : Initial Calibration
 Integrator: ChemStation

Volume Inj. : 2 µl
 Signal #1 Phase : ZB-MR1 Signal #2 Phase: ZB-MR2
 Signal #1 Info : 30Mx0.32mmx 0.50µ Signal #2 Info : 30M x 0.32mm x 0.25µm

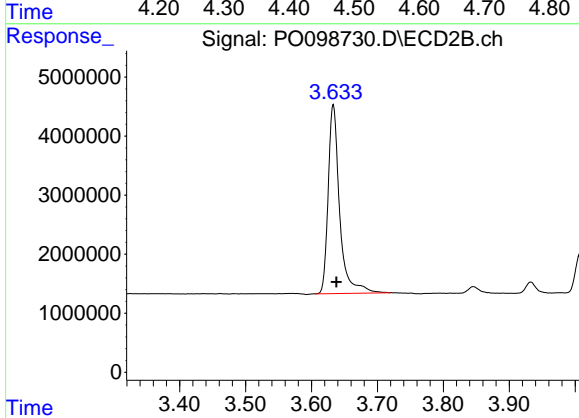




#1 Tetrachloro-m-xylene

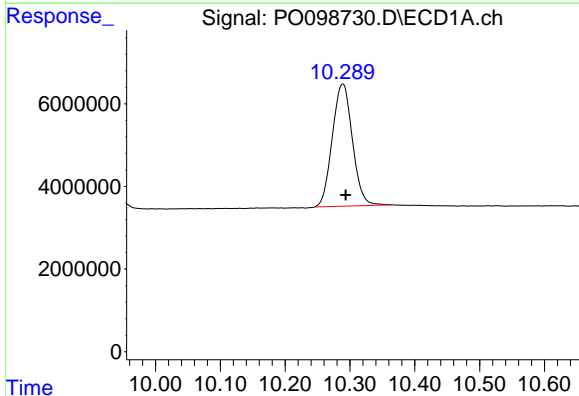
R.T.: 4.479 min
 Delta R.T.: -0.006 min
 Response: 97364199
 Conc: 50.71 ng/ml

Instrument :
 ECD_O
 ClientSampleId :
 AR1660CCC500



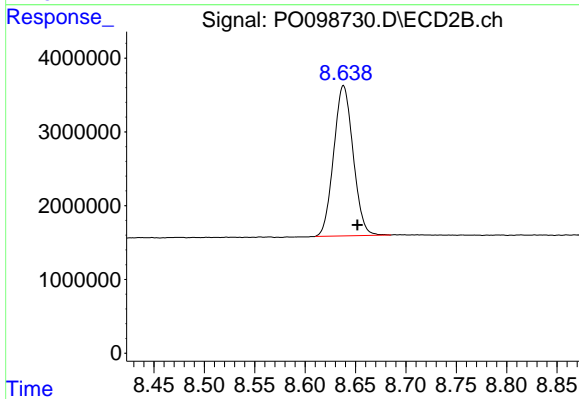
#1 Tetrachloro-m-xylene

R.T.: 3.633 min
 Delta R.T.: -0.005 min
 Response: 38647711
 Conc: 49.62 ng/ml



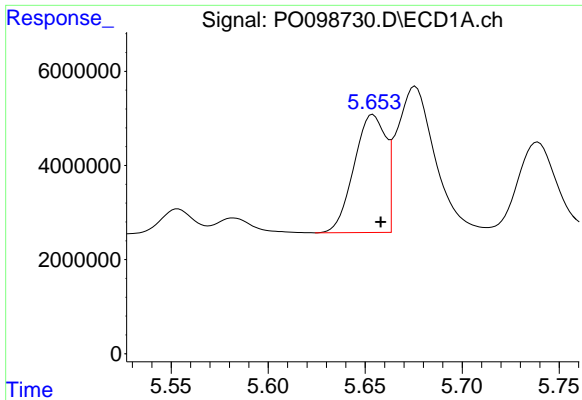
#2 Decachlorobiphenyl

R.T.: 10.289 min
 Delta R.T.: -0.005 min
 Response: 63903236
 Conc: 52.64 ng/ml



#2 Decachlorobiphenyl

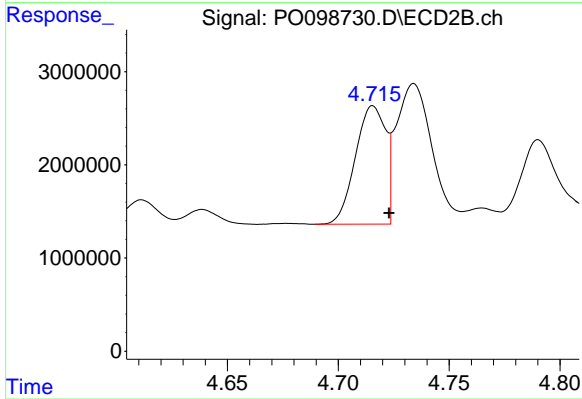
R.T.: 8.638 min
 Delta R.T.: -0.014 min
 Response: 27310724
 Conc: 50.98 ng/ml



#3 AR-1016-1

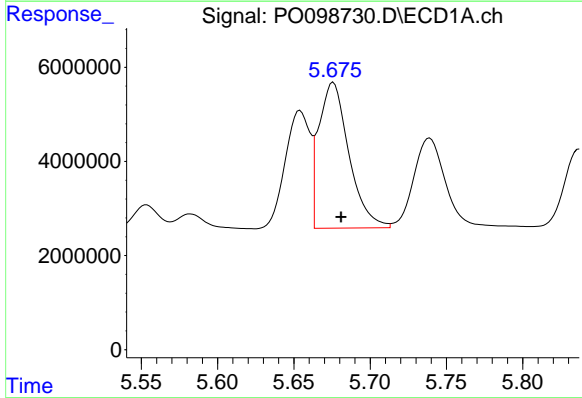
R.T.: 5.654 min
 Delta R.T.: -0.004 min
 Response: 28458589
 Conc: 526.58 ng/ml

Instrument :
 ECD_O
 ClientSampleId :
 AR1660CCC500



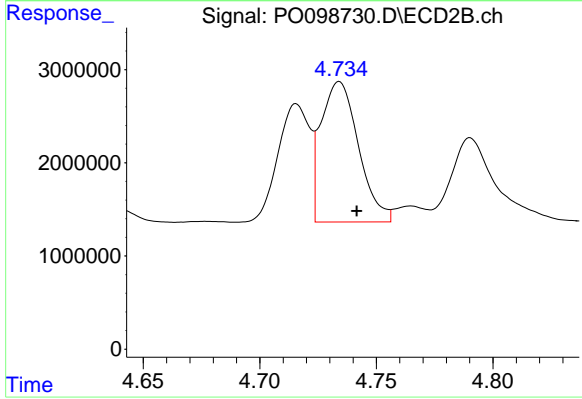
#3 AR-1016-1

R.T.: 4.716 min
 Delta R.T.: -0.007 min
 Response: 12062399
 Conc: 505.37 ng/ml



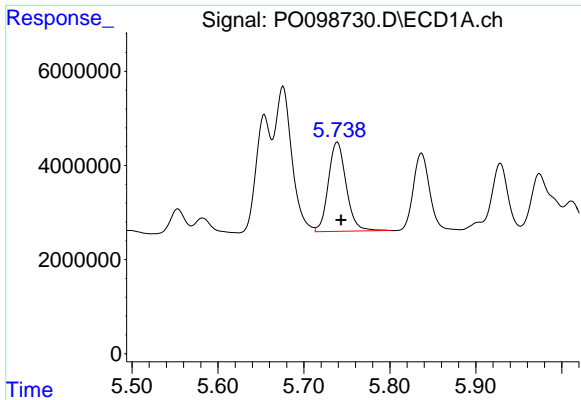
#4 AR-1016-2

R.T.: 5.676 min
 Delta R.T.: -0.005 min
 Response: 42507421
 Conc: 523.57 ng/ml



#4 AR-1016-2

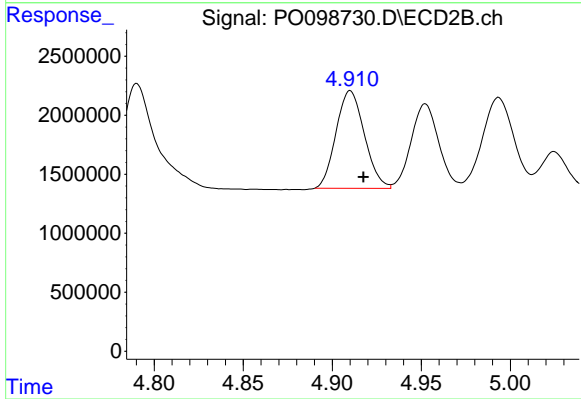
R.T.: 4.734 min
 Delta R.T.: -0.007 min
 Response: 16916768
 Conc: 496.81 ng/ml



#5 AR-1016-3

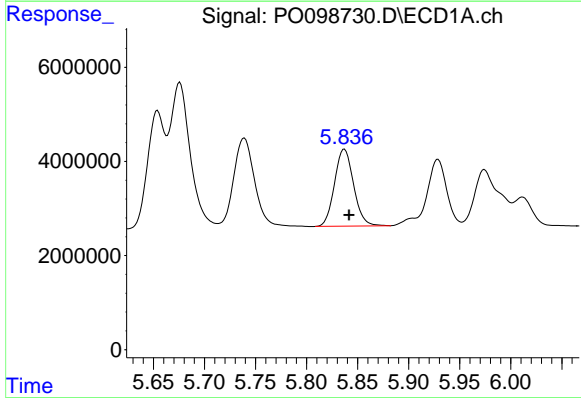
R.T.: 5.739 min
 Delta R.T.: -0.004 min
 Response: 27268517
 Conc: 545.01 ng/ml

Instrument :
 ECD_O
 ClientSampleId :
 AR1660CCC500



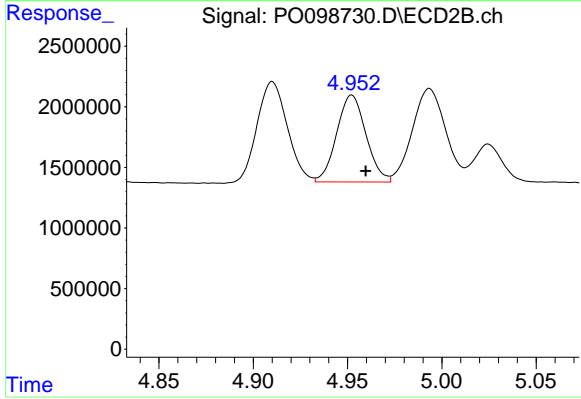
#5 AR-1016-3

R.T.: 4.910 min
 Delta R.T.: -0.007 min
 Response: 9189480
 Conc: 510.85 ng/ml



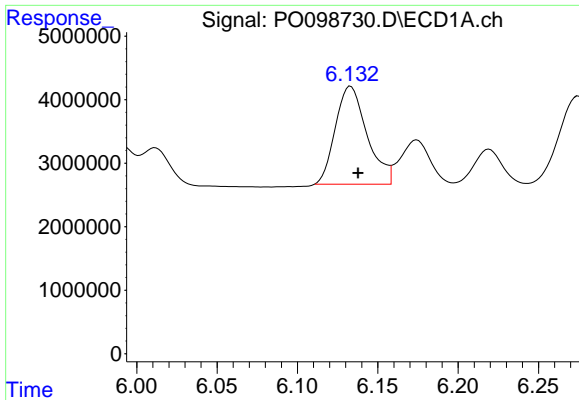
#6 AR-1016-4

R.T.: 5.837 min
 Delta R.T.: -0.005 min
 Response: 21293093
 Conc: 544.56 ng/ml



#6 AR-1016-4

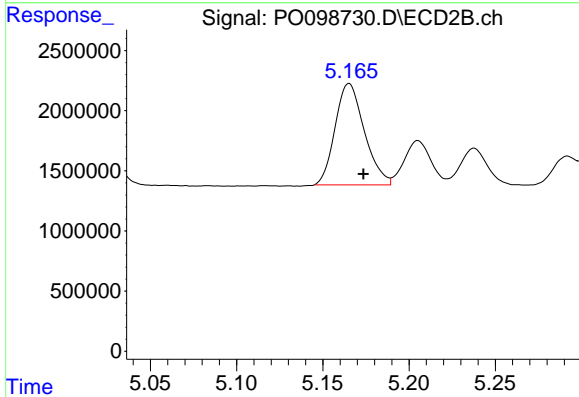
R.T.: 4.952 min
 Delta R.T.: -0.007 min
 Response: 7772323
 Conc: 518.46 ng/ml



#7 AR-1016-5

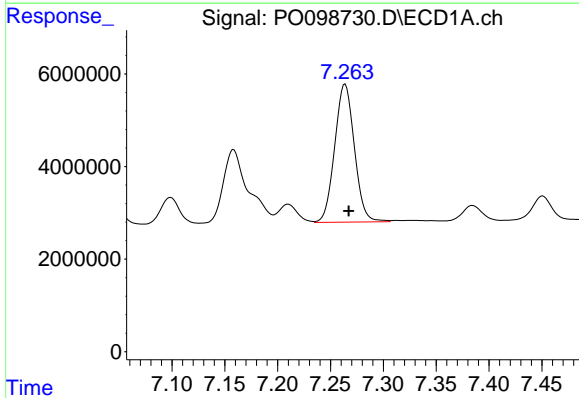
R.T.: 6.133 min
 Delta R.T.: -0.005 min
 Response: 21145212
 Conc: 514.22 ng/ml

Instrument :
 ECD_O
 ClientSampleId :
 AR1660CCC500



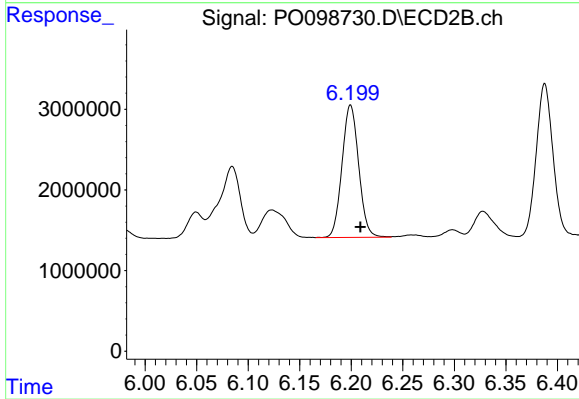
#7 AR-1016-5

R.T.: 5.165 min
 Delta R.T.: -0.008 min
 Response: 9938253
 Conc: 511.74 ng/ml



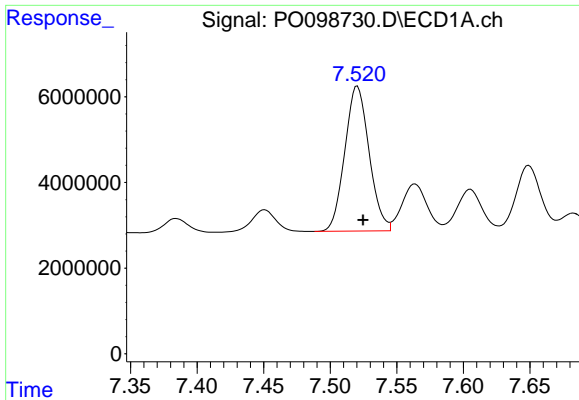
#31 AR-1260-1

R.T.: 7.264 min
 Delta R.T.: -0.003 min
 Response: 38667550
 Conc: 531.77 ng/ml



#31 AR-1260-1

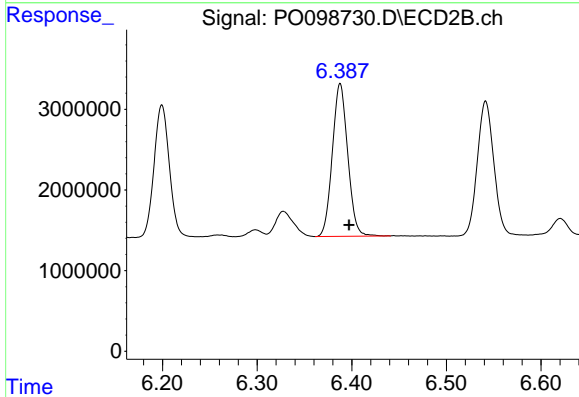
R.T.: 6.199 min
 Delta R.T.: -0.010 min
 Response: 18513641
 Conc: 504.59 ng/ml



#32 AR-1260-2

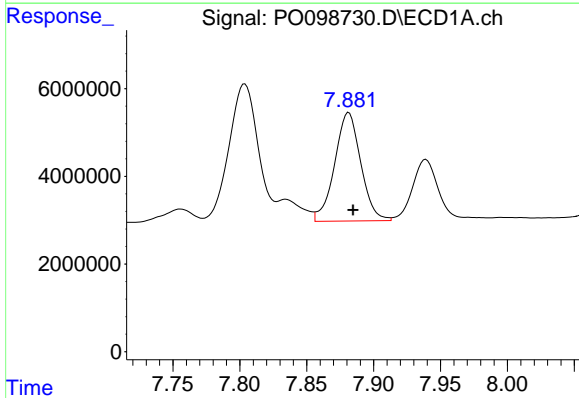
R.T.: 7.520 min
 Delta R.T.: -0.004 min
 Response: 43001106
 Conc: 522.23 ng/ml

Instrument :
 ECD_O
 ClientSampleId :
 AR1660CCC500



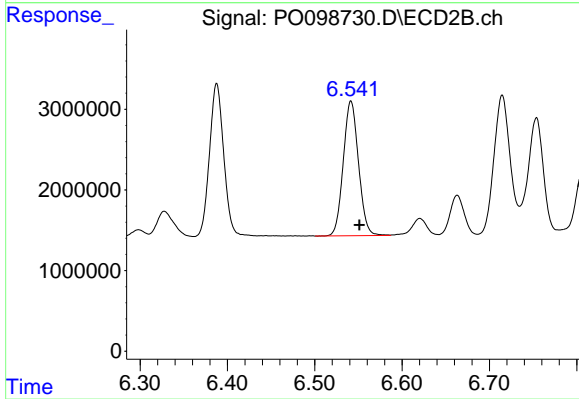
#32 AR-1260-2

R.T.: 6.388 min
 Delta R.T.: -0.009 min
 Response: 21408385
 Conc: 510.20 ng/ml



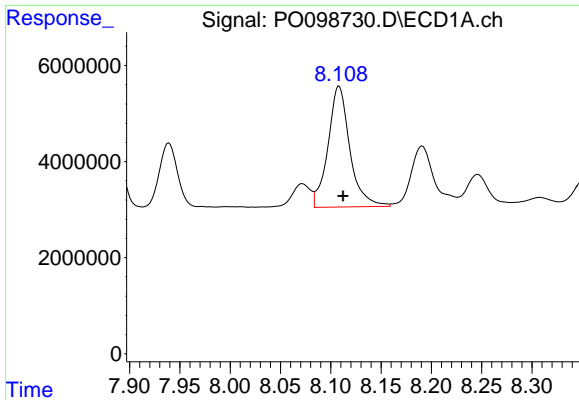
#33 AR-1260-3

R.T.: 7.881 min
 Delta R.T.: -0.003 min
 Response: 33667801
 Conc: 544.24 ng/ml



#33 AR-1260-3

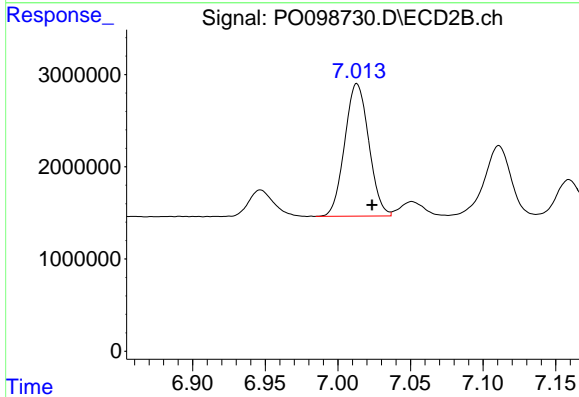
R.T.: 6.542 min
 Delta R.T.: -0.010 min
 Response: 20245155
 Conc: 505.91 ng/ml



#34 AR-1260-4

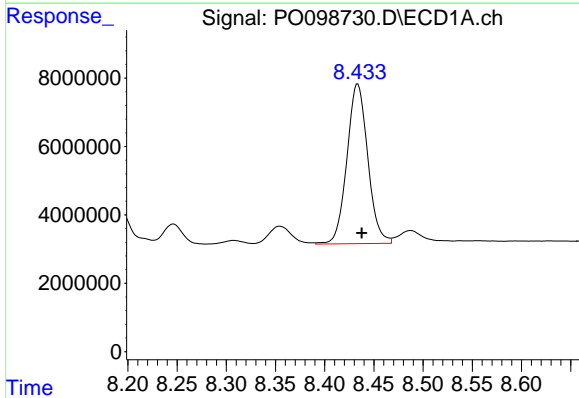
R.T.: 8.108 min
 Delta R.T.: -0.004 min
 Response: 37936224
 Conc: 562.75 ng/ml

Instrument :
 ECD_O
 ClientSampleId :
 AR1660CCC500



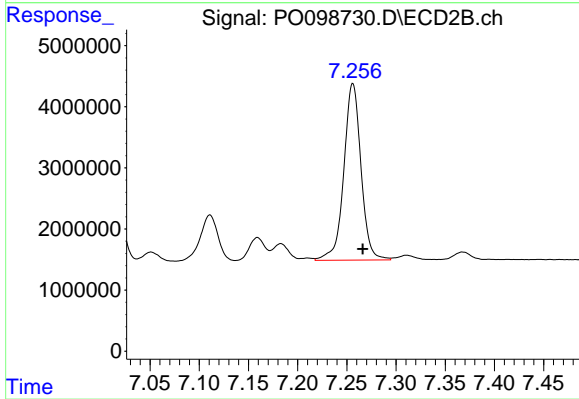
#34 AR-1260-4

R.T.: 7.013 min
 Delta R.T.: -0.010 min
 Response: 16610680
 Conc: 515.81 ng/ml



#35 AR-1260-5

R.T.: 8.434 min
 Delta R.T.: -0.004 min
 Response: 68964011
 Conc: 530.82 ng/ml



#35 AR-1260-5

R.T.: 7.256 min
 Delta R.T.: -0.010 min
 Response: 35141194
 Conc: 501.58 ng/ml