

Data Path : Z:\pestpcbsrv\HPCHEM1\ECD\_0\Data\PO101223\  
 Data File : PO098737.D  
 Signal(s) : Signal #1: ECD1A.ch Signal #2: ECD2B.ch  
 Acq On : 12 Oct 2023 13:41  
 Operator : YP/AJ  
 Sample : 04854-01  
 Misc :  
 ALS Vial : 10 Sample Multiplier: 1

Instrument :  
 ECD\_0  
 ClientSampleId :  
 TR-05-101123

Integration File signal 1: autoint1.e  
 Integration File signal 2: autoint2.e  
 Quant Time: Oct 12 15:19:17 2023  
 Quant Method : Z:\pestpcbsrv\HPCHEM1\ECD\_0\methods\PO092723.M  
 Quant Title : GC EXTRACTABLES  
 QLast Update : Thu Sep 28 01:18:56 2023  
 Response via : Initial Calibration  
 Integrator: ChemStation

Volume Inj. : 2 µl  
 Signal #1 Phase : ZB-MR1 Signal #2 Phase: ZB-MR2  
 Signal #1 Info : 30Mx0.32mmx 0.50µ Signal #2 Info : 30M x 0.32mm x 0.25µm

Compound	RT#1	RT#2	Resp#1	Resp#2	ng/ml	ng/ml
-----						
System Monitoring Compounds						
1) SA Tetrachlo...	4.480	3.633	30421443	12697756	15.843	16.303
2) SA Decachlor...	10.294	8.639	24403892	9699210	20.104	18.103

Target Compounds

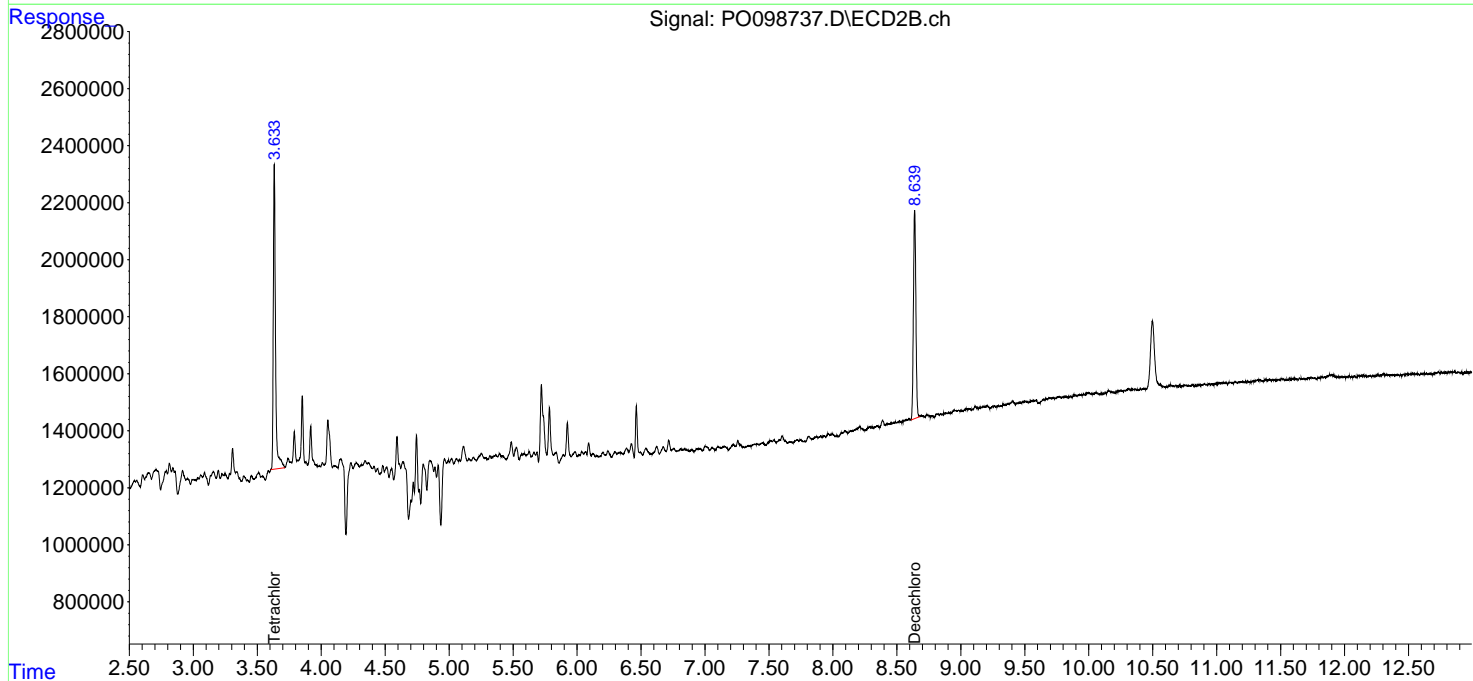
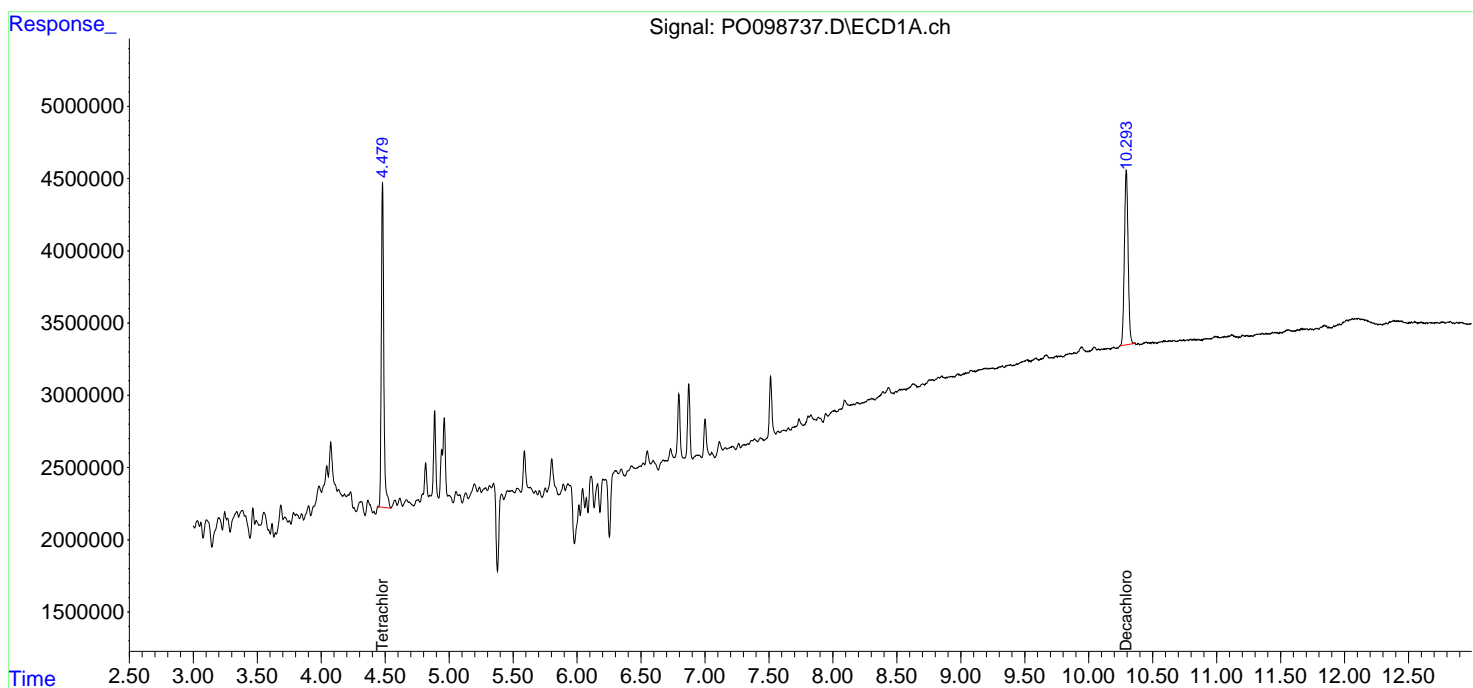
(f)=RT Delta > 1/2 Window (#)=Amounts differ by > 25% (m)=manual int.

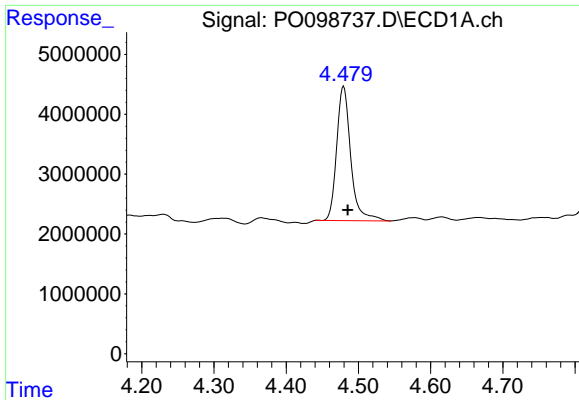
Data Path : Z:\pestpcbsrv\HPCHEM1\ECD\_O\Data\PO101223\  
 Data File : PO098737.D  
 Signal(s) : Signal #1: ECD1A.ch Signal #2: ECD2B.ch  
 Acq On : 12 Oct 2023 13:41  
 Operator : YP/AJ  
 Sample : 04854-01  
 Misc :  
 ALS Vial : 10 Sample Multiplier: 1

Instrument :  
 ECD\_O  
 ClientSampleId :  
 TR-05-101123

Integration File signal 1: autoint1.e  
 Integration File signal 2: autoint2.e  
 Quant Time: Oct 12 15:19:17 2023  
 Quant Method : Z:\pestpcbsrv\HPCHEM1\ECD\_O\methods\PO092723.M  
 Quant Title : GC EXTRACTABLES  
 QLast Update : Thu Sep 28 01:18:56 2023  
 Response via : Initial Calibration  
 Integrator: ChemStation

Volume Inj. : 2 µl  
 Signal #1 Phase : ZB-MR1 Signal #2 Phase: ZB-MR2  
 Signal #1 Info : 30Mx0.32mmx 0.50µ Signal #2 Info : 30M x 0.32mm x 0.25µm

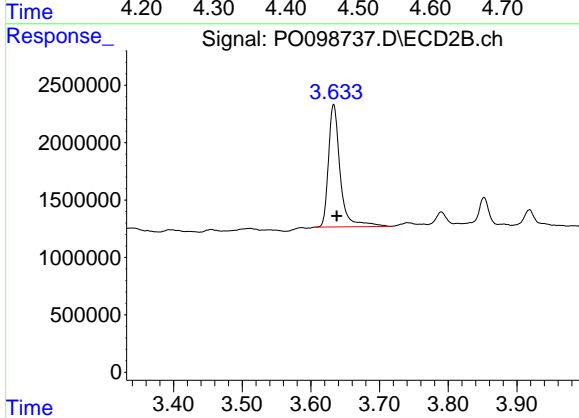




#1 Tetrachloro-m-xylene

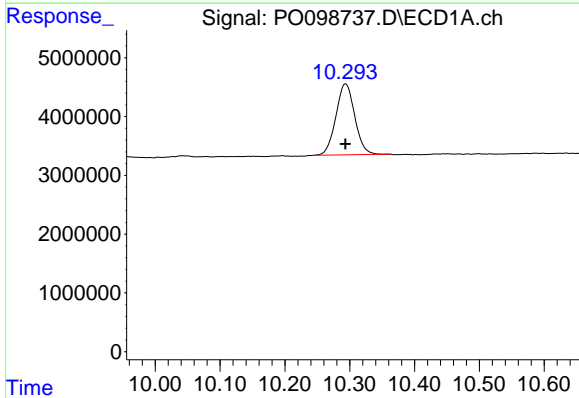
R.T.: 4.480 min  
 Delta R.T.: -0.005 min  
 Response: 30421443  
 Conc: 15.84 ng/ml

Instrument :  
 ECD\_O  
 ClientSampleId :  
 TR-05-101123



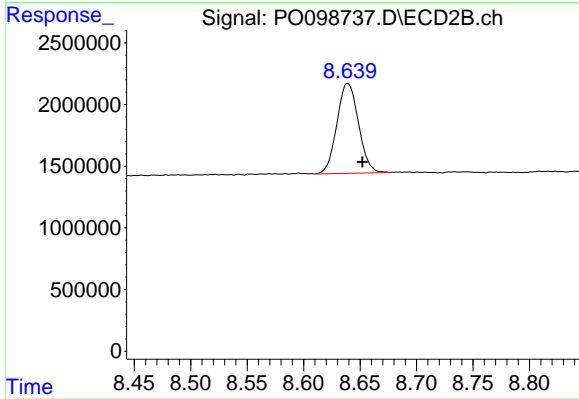
#1 Tetrachloro-m-xylene

R.T.: 3.633 min  
 Delta R.T.: -0.004 min  
 Response: 12697756  
 Conc: 16.30 ng/ml



#2 Decachlorobiphenyl

R.T.: 10.294 min  
 Delta R.T.: 0.000 min  
 Response: 24403892  
 Conc: 20.10 ng/ml



#2 Decachlorobiphenyl

R.T.: 8.639 min  
 Delta R.T.: -0.013 min  
 Response: 9699210  
 Conc: 18.10 ng/ml