

Data Path : Z:\pestpcbsrv\HPCHEM1\ECD\_0\Data\PO101223\  
 Data File : PO098757.D  
 Signal(s) : Signal #1: ECD1A.ch Signal #2: ECD2B.ch  
 Acq On : 12 Oct 2023 19:35  
 Operator : YP/AJ  
 Sample : 04844-01  
 Misc :  
 ALS Vial : 28 Sample Multiplier: 1

Instrument :  
 ECD\_0  
 ClientSampleId :  
 OR-603-COMP-05

Integration File signal 1: autoint1.e  
 Integration File signal 2: autoint2.e  
 Quant Time: Oct 13 01:22:21 2023  
 Quant Method : Z:\pestpcbsrv\HPCHEM1\ECD\_0\methods\PO092723.M  
 Quant Title : GC EXTRACTABLES  
 QLast Update : Thu Sep 28 01:18:56 2023  
 Response via : Initial Calibration  
 Integrator: ChemStation

Volume Inj. : 2 µl  
 Signal #1 Phase : ZB-MR1 Signal #2 Phase: ZB-MR2  
 Signal #1 Info : 30Mx0.32mmx 0.50µ Signal #2 Info : 30M x 0.32mm x 0.25µm

Compound	RT#1	RT#2	Resp#1	Resp#2	ng/ml	ng/ml
-----						
System Monitoring Compounds						
1) SA Tetrachlo...	4.479	3.633	38298014	15454144	19.945	19.842
2) SA Decachlor...	10.291	8.638	24653085	10419158	20.310	19.447

Target Compounds

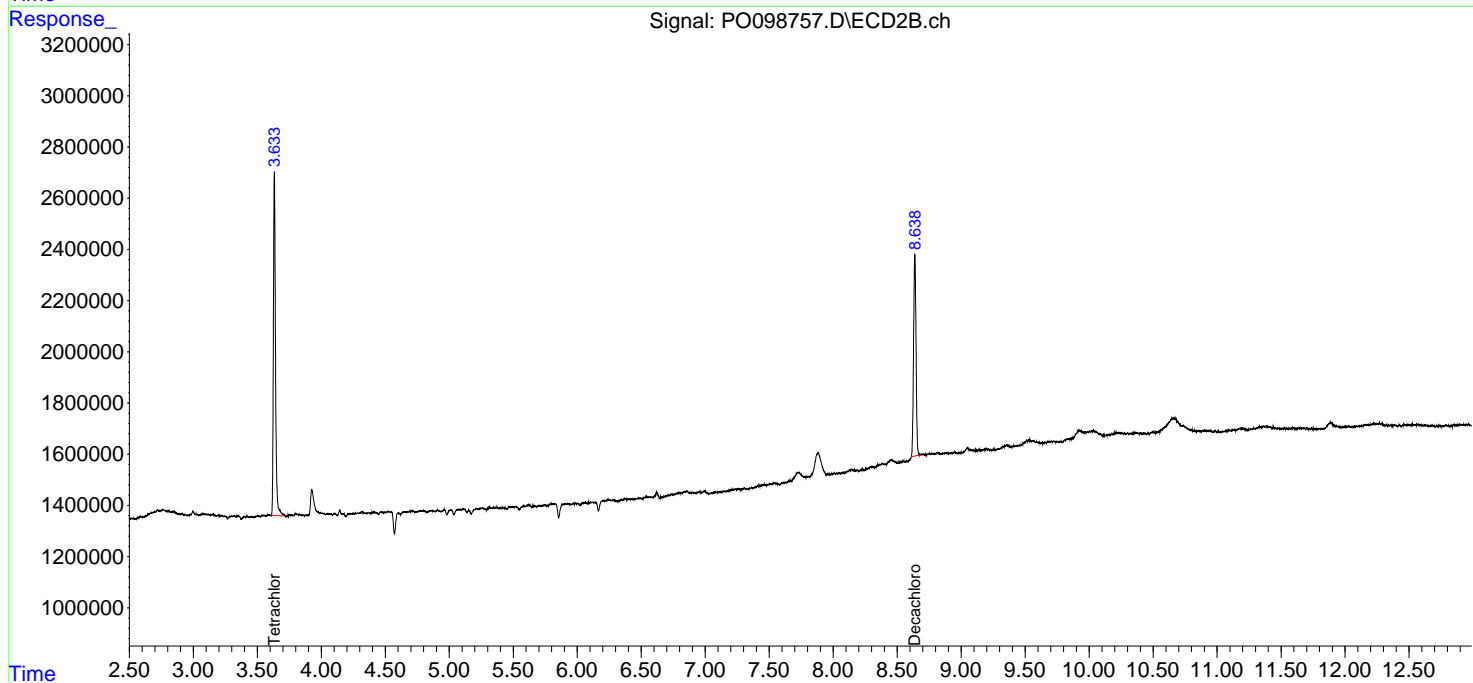
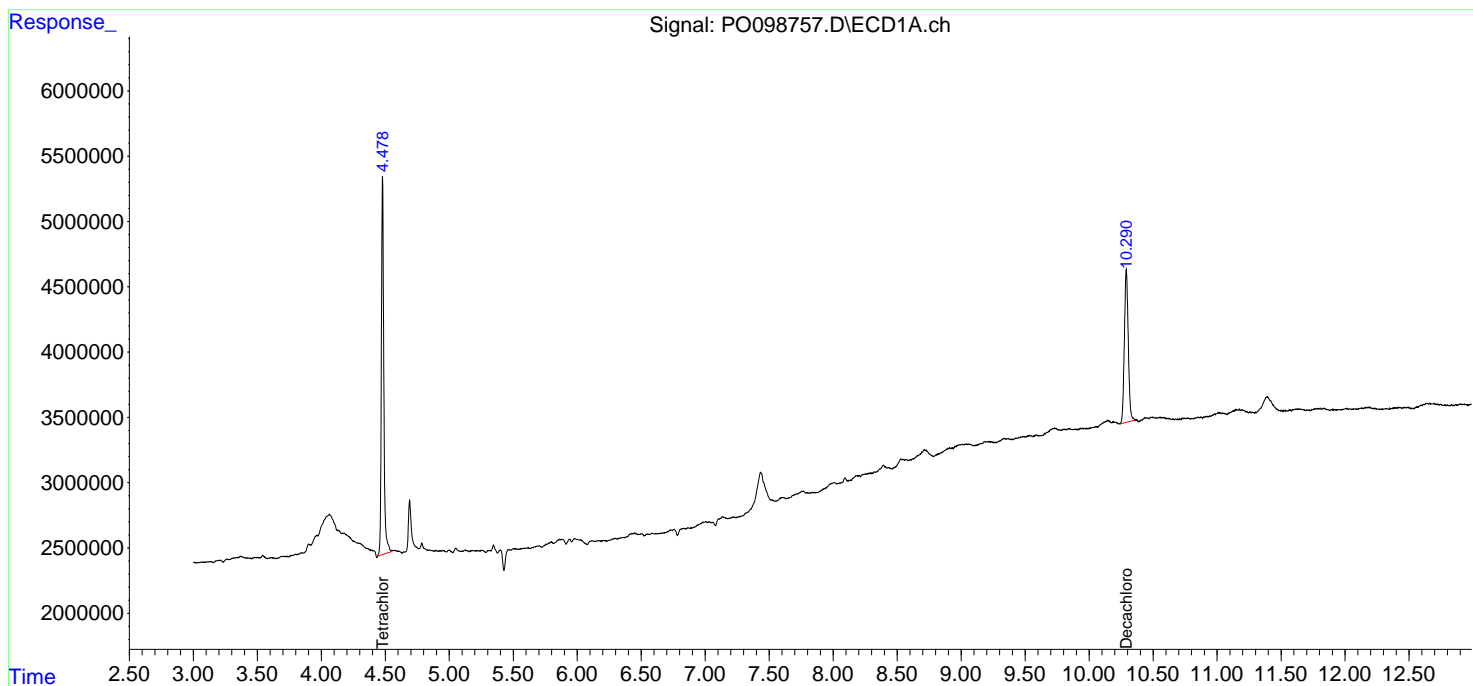
(f)=RT Delta > 1/2 Window (#)=Amounts differ by > 25% (m)=manual int.

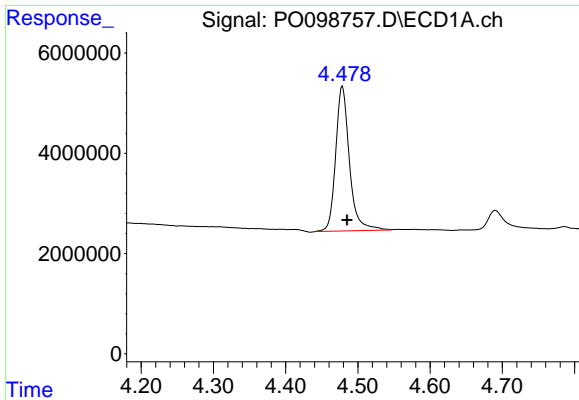
Data Path : Z:\pestpcbsrv\HPCHEM1\ECD\_0\Data\PO101223\  
 Data File : PO098757.D  
 Signal(s) : Signal #1: ECD1A.ch Signal #2: ECD2B.ch  
 Acq On : 12 Oct 2023 19:35  
 Operator : YP/AJ  
 Sample : 04844-01  
 Misc :  
 ALS Vial : 28 Sample Multiplier: 1

Instrument :  
 ECD\_0  
 ClientSampleId :  
 OR-603-COMP-05

Integration File signal 1: autoint1.e  
 Integration File signal 2: autoint2.e  
 Quant Time: Oct 13 01:22:21 2023  
 Quant Method : Z:\pestpcbsrv\HPCHEM1\ECD\_0\methods\PO092723.M  
 Quant Title : GC EXTRACTABLES  
 QLast Update : Thu Sep 28 01:18:56 2023  
 Response via : Initial Calibration  
 Integrator: ChemStation

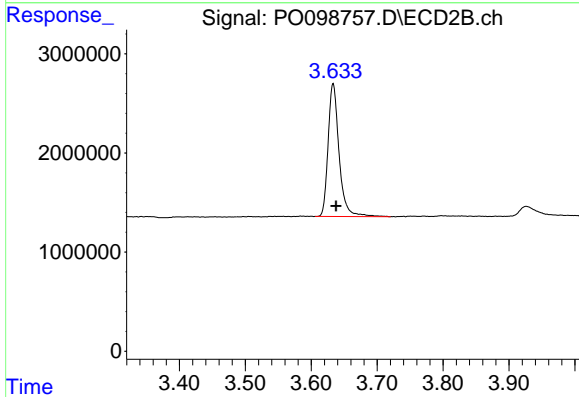
Volume Inj. : 2 µl  
 Signal #1 Phase : ZB-MR1 Signal #2 Phase: ZB-MR2  
 Signal #1 Info : 30Mx0.32mmx 0.50µ Signal #2 Info : 30M x 0.32mm x 0.25µm



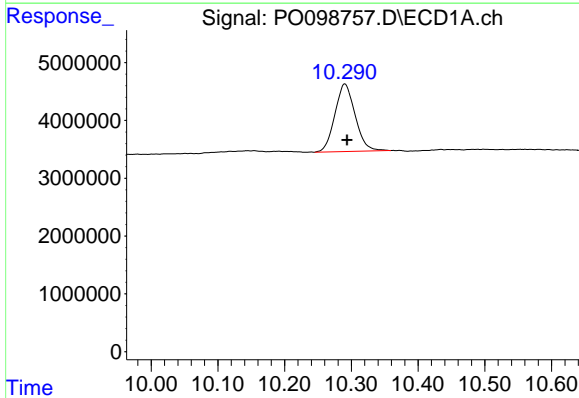


#1 Tetrachloro-m-xylene  
 R.T.: 4.479 min  
 Delta R.T.: -0.006 min  
 Response: 38298014  
 Conc: 19.95 ng/ml

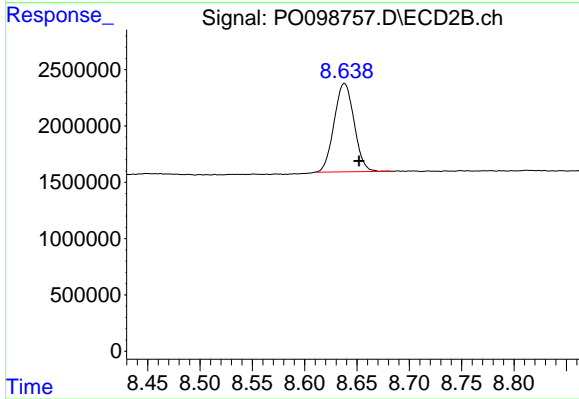
Instrument :  
 ECD\_O  
 ClientSampleId :  
 OR-603-COMP-05



#1 Tetrachloro-m-xylene  
 R.T.: 3.633 min  
 Delta R.T.: -0.005 min  
 Response: 15454144  
 Conc: 19.84 ng/ml



#2 Decachlorobiphenyl  
 R.T.: 10.291 min  
 Delta R.T.: -0.003 min  
 Response: 24653085  
 Conc: 20.31 ng/ml



#2 Decachlorobiphenyl  
 R.T.: 8.638 min  
 Delta R.T.: -0.014 min  
 Response: 10419158  
 Conc: 19.45 ng/ml