

Data Path : Z:\pestpcbsrv\HPCHEM1\ECD\_0\Data\PO101223\  
 Data File : PO098783.D  
 Signal(s) : Signal #1: ECD1A.ch Signal #2: ECD2B.ch  
 Acq On : 13 Oct 2023 03:10  
 Operator : YP/AJ  
 Sample : 04727-16  
 Misc :  
 ALS Vial : 52 Sample Multiplier: 1

Instrument :  
 ECD\_0  
 ClientSampleId :  
 K242-22B

Integration File signal 1: autoint1.e  
 Integration File signal 2: autoint2.e  
 Quant Time: Oct 13 04:14:45 2023  
 Quant Method : Z:\pestpcbsrv\HPCHEM1\ECD\_0\methods\PO092723.M  
 Quant Title : GC EXTRACTABLES  
 QLast Update : Thu Sep 28 01:18:56 2023  
 Response via : Initial Calibration  
 Integrator: ChemStation

Volume Inj. : 2 µl  
 Signal #1 Phase : ZB-MR1 Signal #2 Phase: ZB-MR2  
 Signal #1 Info : 30Mx0.32mmx 0.50µ Signal #2 Info : 30M x 0.32mm x 0.25µm

Compound	RT#1	RT#2	Resp#1	Resp#2	ng/ml	ng/ml
-----						
System Monitoring Compounds						
1) SA Tetrachlo...	4.477	3.632	33969670	13728802	17.691	17.627
2) SA Decachlor...	10.288	8.636	18787757	8104682	15.478	15.127

Target Compounds

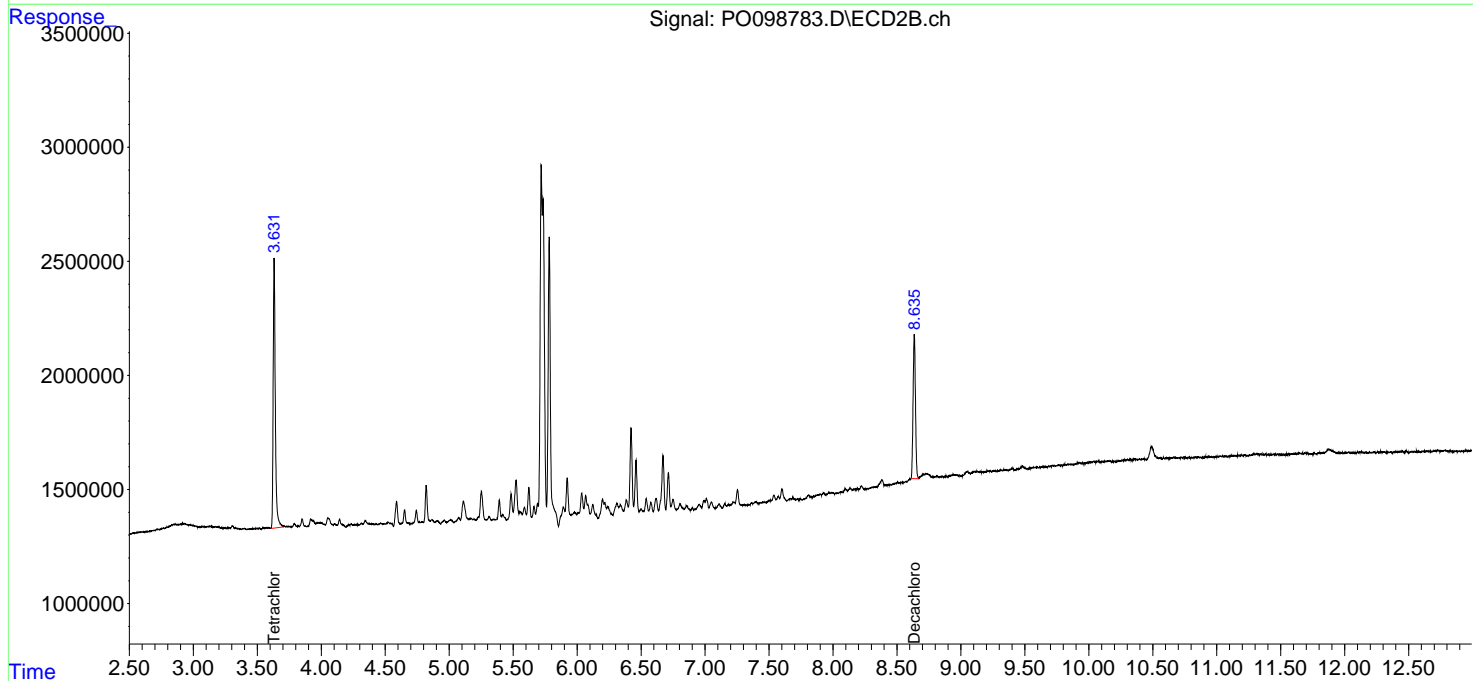
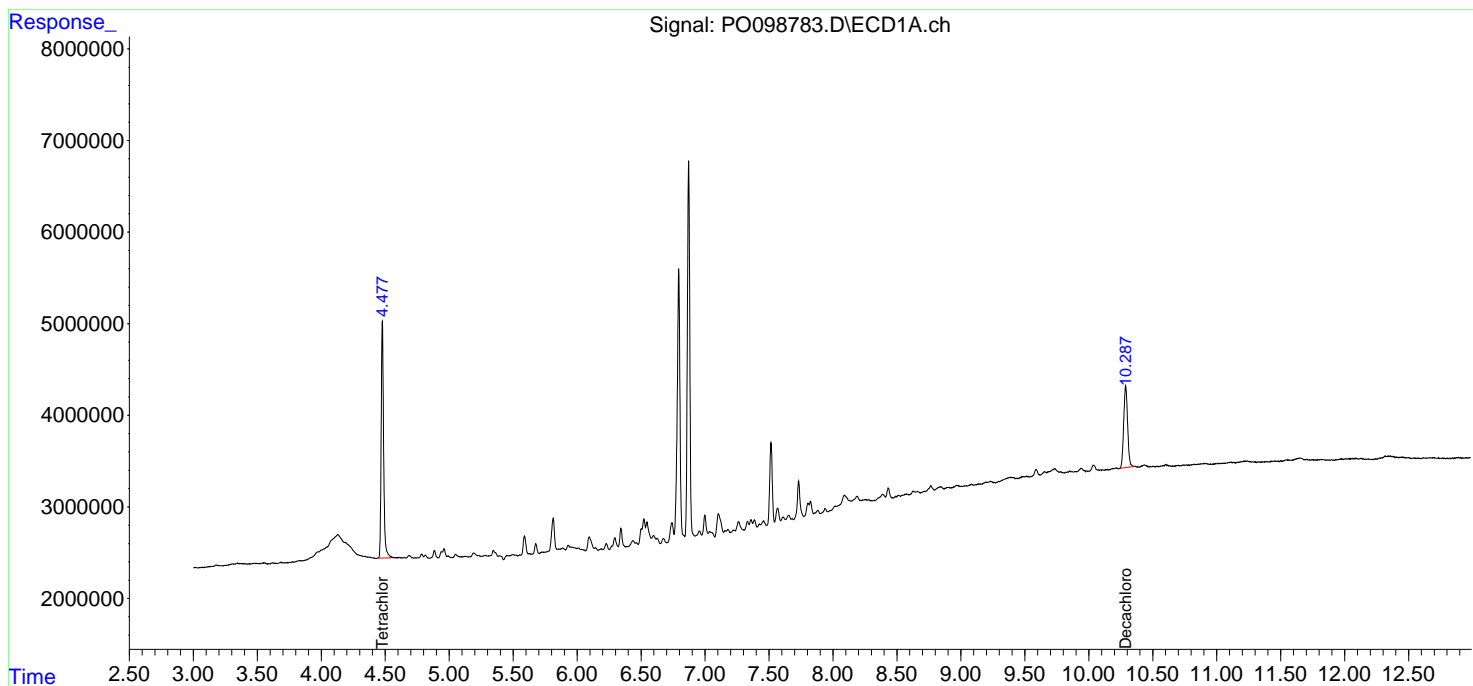
(f)=RT Delta > 1/2 Window (#)=Amounts differ by > 25% (m)=manual int.

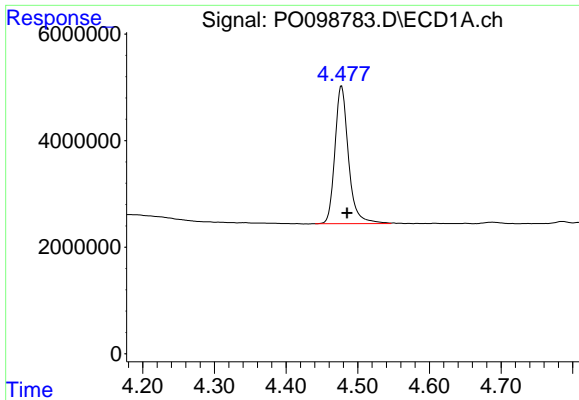
Data Path : Z:\pestpcbsrv\HPCHEM1\ECD\_O\Data\PO101223\  
 Data File : PO098783.D  
 Signal(s) : Signal #1: ECD1A.ch Signal #2: ECD2B.ch  
 Acq On : 13 Oct 2023 03:10  
 Operator : YP/AJ  
 Sample : 04727-16  
 Misc :  
 ALS Vial : 52 Sample Multiplier: 1

Instrument :  
 ECD\_O  
 ClientSampleId :  
 K242-22B

Integration File signal 1: autoint1.e  
 Integration File signal 2: autoint2.e  
 Quant Time: Oct 13 04:14:45 2023  
 Quant Method : Z:\pestpcbsrv\HPCHEM1\ECD\_O\methods\PO092723.M  
 Quant Title : GC EXTRACTABLES  
 QLast Update : Thu Sep 28 01:18:56 2023  
 Response via : Initial Calibration  
 Integrator: ChemStation

Volume Inj. : 2 µl  
 Signal #1 Phase : ZB-MR1 Signal #2 Phase: ZB-MR2  
 Signal #1 Info : 30Mx0.32mmx 0.50µ Signal #2 Info : 30M x 0.32mm x 0.25µm

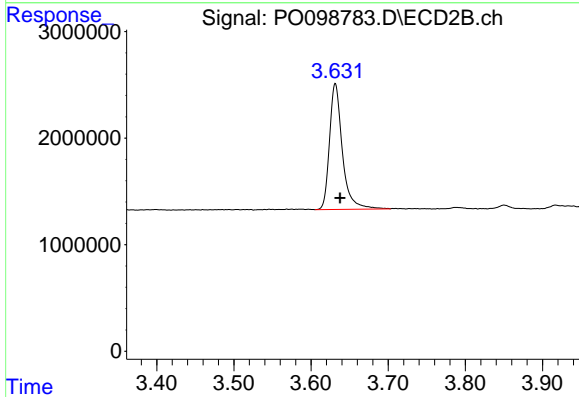




#1 Tetrachloro-m-xylene

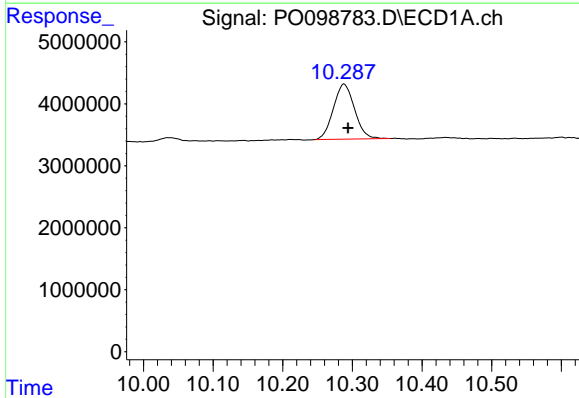
R.T.: 4.477 min  
 Delta R.T.: -0.008 min  
 Response: 33969670  
 Conc: 17.69 ng/ml

Instrument :  
 ECD\_O  
 ClientSampleId :  
 K242-22B



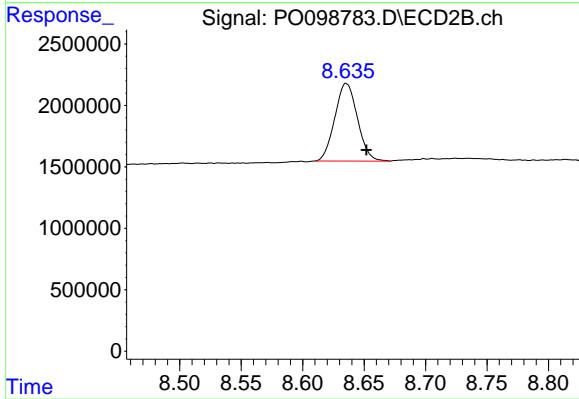
#1 Tetrachloro-m-xylene

R.T.: 3.632 min  
 Delta R.T.: -0.006 min  
 Response: 13728802  
 Conc: 17.63 ng/ml



#2 Decachlorobiphenyl

R.T.: 10.288 min  
 Delta R.T.: -0.006 min  
 Response: 18787757  
 Conc: 15.48 ng/ml



#2 Decachlorobiphenyl

R.T.: 8.636 min  
 Delta R.T.: -0.016 min  
 Response: 8104682  
 Conc: 15.13 ng/ml