

Data Path : Z:\pestpcbsrv\HPCHEM1\ECD_0\Data\PO101320\
 Data File : PO072312.D
 Signal(s) : Signal #1: ECD1A.CH Signal #2: ECD2B.CH
 Acq On : 13 Oct 2020 15:18
 Operator : DD\AJ
 Sample : L4369-02
 Misc :
 ALS Vial : 10 Sample Multiplier: 1

Instrument :
 ECD_0
 ClientSampled :
 HD-1

Manual Integrations
 APPROVED

Ankita
 10/14/2020 12:02:32 PM

Integration File signal 1: autoint1.e
 Integration File signal 2: autoint2.e
 Quant Time: Oct 14 02:22:37 2020
 Quant Method : Z:\pestpcbsrv\HPCHEM1\ECD_0\methods\PO100320.M
 Quant Title : GC EXTRACTABLES
 QLast Update : Mon Oct 05 11:48:20 2020
 Response via : Initial Calibration
 Integrator: ChemStation 6890 Scale Mode: Small noise peaks clipped

Volume Inj. : 2 µl
 Signal #1 Phase : ZB-MR2 Signal #2 Phase: ZB-MR2
 Signal #1 Info : 30Mx0.32mmx 0.50µ Signal #2 Info : 30M x 0.32mm x 0.25µm

Compound	RT#1	RT#2	Resp#1	Resp#2	ng/ml	ng/ml

System Monitoring Compounds						
1) SA Tetrachlo...	4.335	3.513	1835071	894523	25.549	23.882
2) SA Decachlor...	9.936	8.681	1309962	595972	11.897m	10.478m
Target Compounds						
26) L6 AR-1254-1	6.524	5.584	609368	325078	174.417	136.025
27) L6 AR-1254-2	6.753	5.746	1028710	424663	186.850	198.537
28) L6 AR-1254-3	7.129	6.154	1621230	995034	280.724m	293.075
29) L6 AR-1254-4	7.424	6.395	571455	351412	98.088	144.723 #
30) L6 AR-1254-5	7.843	6.815	2185526	1156397	406.091m	353.410m

(f)=RT Delta > 1/2 Window (#)=Amounts differ by > 25% (m)=manual int.

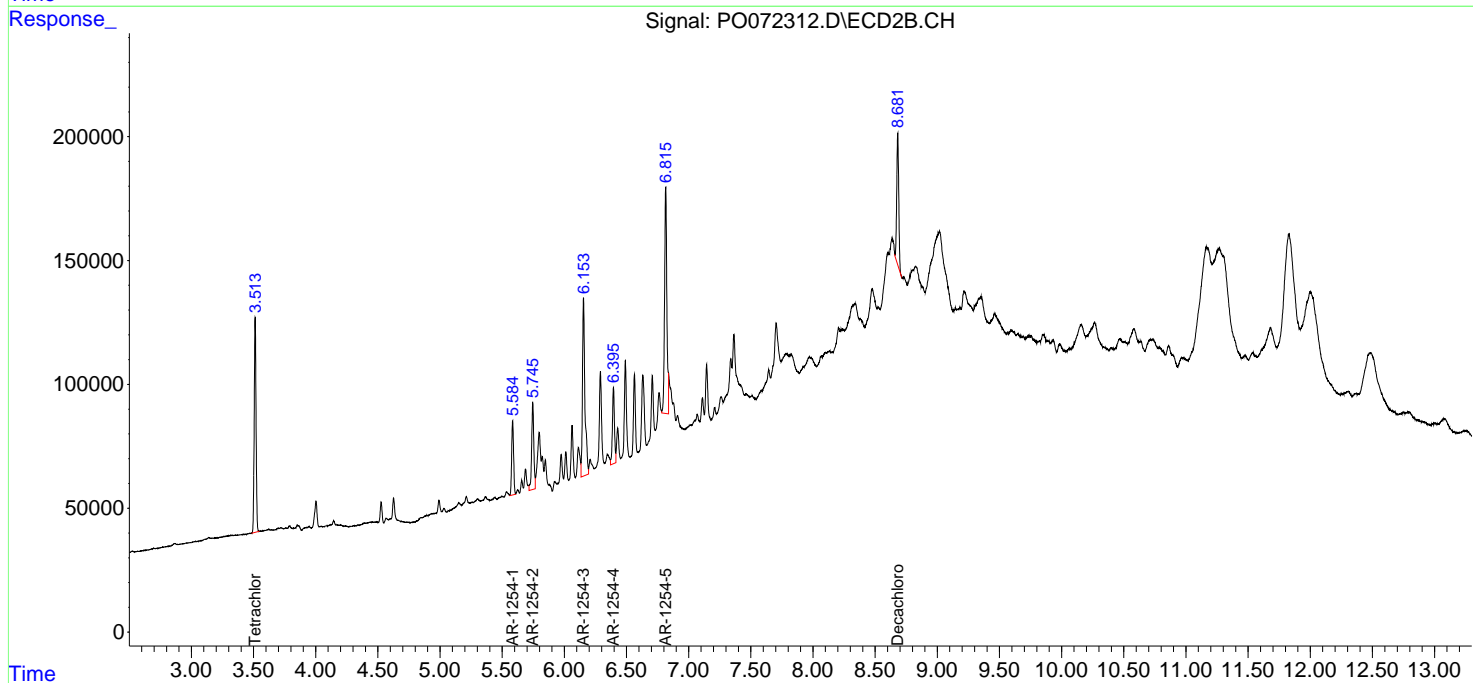
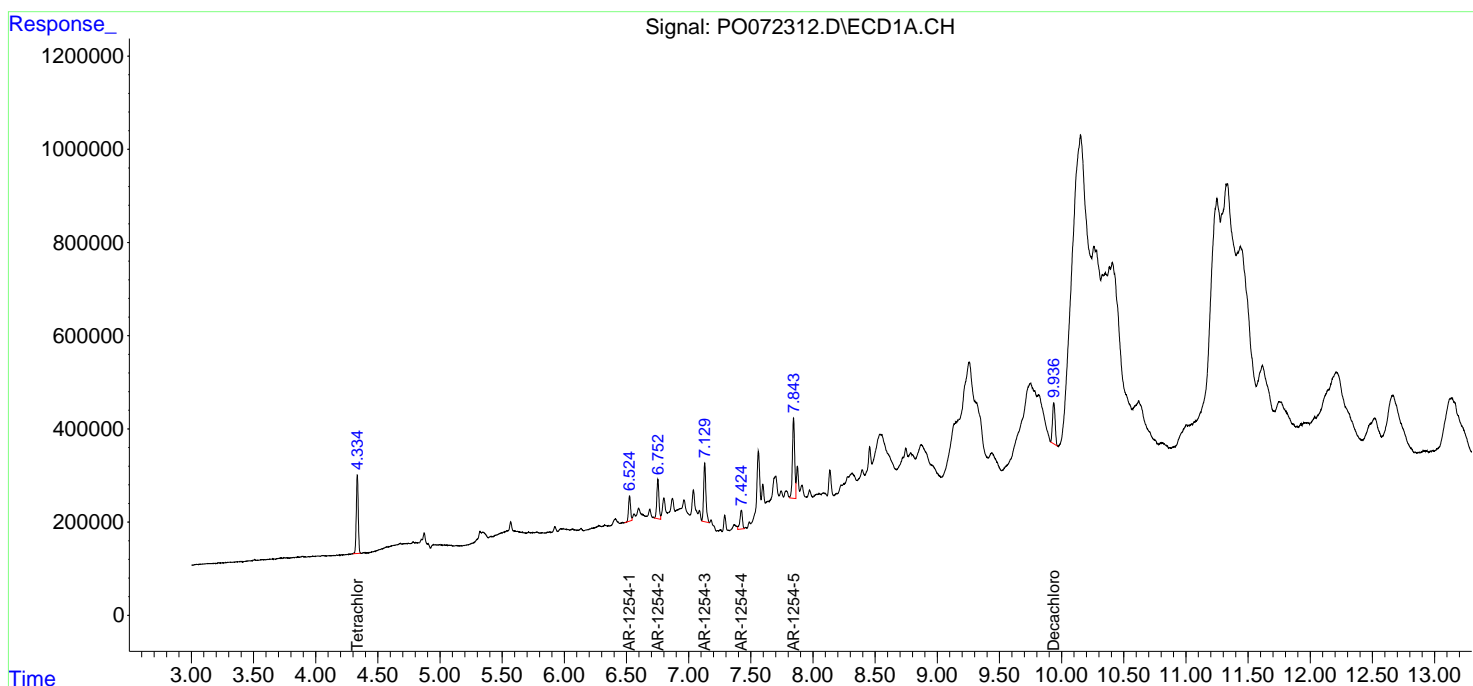
Data Path : Z:\pestpcbsrv\HPCHEM1\ECD_O\Data\PO101320\
 Data File : PO072312.D
 Signal(s) : Signal #1: ECD1A.CH Signal #2: ECD2B.CH
 Acq On : 13 Oct 2020 15:18
 Operator : DD\AJ
 Sample : L4369-02
 Misc :
 ALS Vial : 10 Sample Multiplier: 1

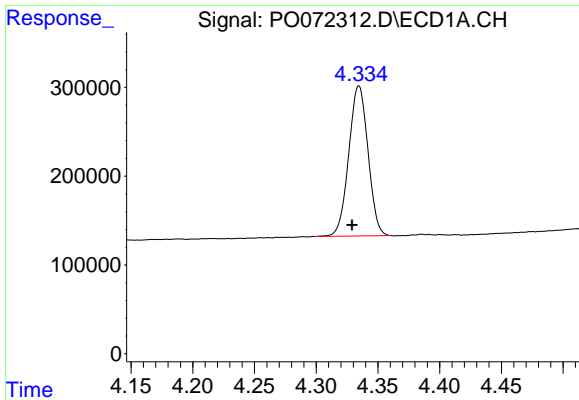
Instrument :
 ECD_O
Client Sampled :
 HD-1

Manual Integrations
APPROVED
 Ankita
 10/14/2020 12:02:32 PM

Integration File signal 1: autoint1.e
 Integration File signal 2: autoint2.e
 Quant Time: Oct 14 02:22:37 2020
 Quant Method : Z:\pestpcbsrv\HPCHEM1\ECD_O\methods\PO100320.M
 Quant Title : GC EXTRACTABLES
 QLast Update : Mon Oct 05 11:48:20 2020
 Response via : Initial Calibration
 Integrator: ChemStation 6890 Scale Mode: Small noise peaks clipped

Volume Inj. : 2 µl
 Signal #1 Phase : ZB-MR1 Signal #2 Phase: ZB-MR2
 Signal #1 Info : 30Mx0.32mmx 0.50µ Signal #2 Info : 30M x 0.32mm x 0.25µm

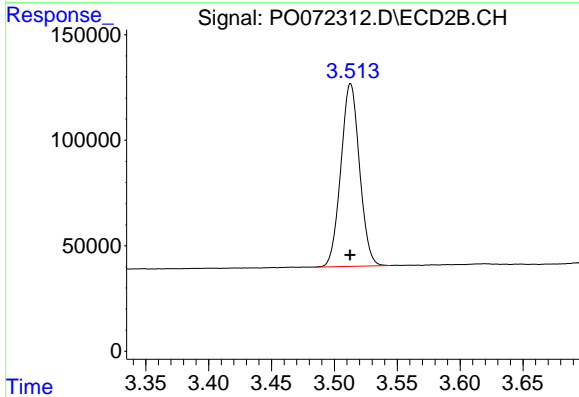




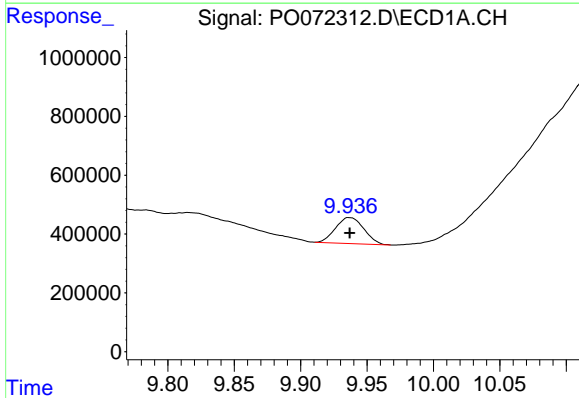
#1 Tetrachloro-m-xylene
 R.T.: 4.335 min
 Delta R.T.: 0.006 min
 Response: 1835071
 Conc: 25.55 ng/ml

Instrument :
 ECD_O
 ClientSampled :
 HD-1

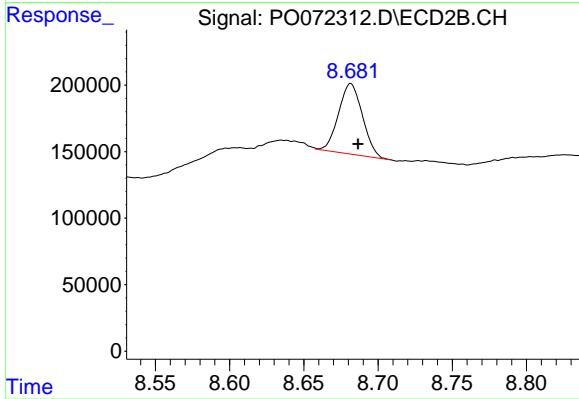
Manual Integrations
 APPROVED
 Ankita
 10/14/2020 12:02:32 PM



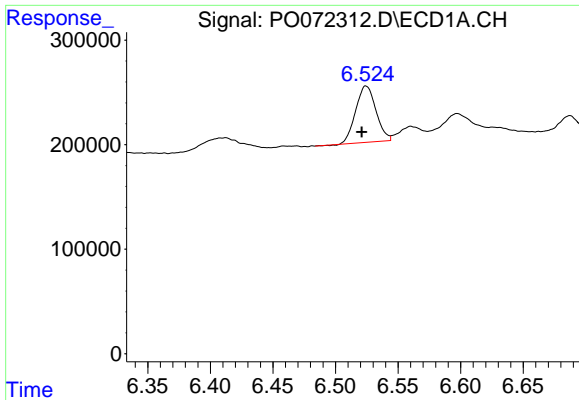
#1 Tetrachloro-m-xylene
 R.T.: 3.513 min
 Delta R.T.: 0.000 min
 Response: 894523
 Conc: 23.88 ng/ml



#2 Decachlorobiphenyl
 R.T.: 9.936 min
 Delta R.T.: -0.002 min
 Response: 1309962
 Conc: 11.90 ng/ml m



#2 Decachlorobiphenyl
 R.T.: 8.681 min
 Delta R.T.: -0.005 min
 Response: 595972
 Conc: 10.48 ng/ml m

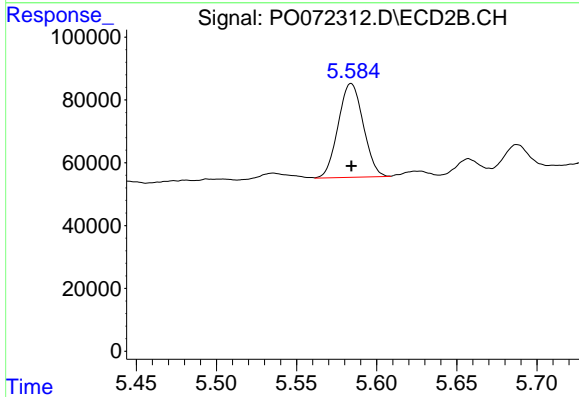


#26 AR-1254-1

R.T.: 6.524 min
 Delta R.T.: 0.003 min
 Response: 609368
 Conc: 174.42 ng/ml

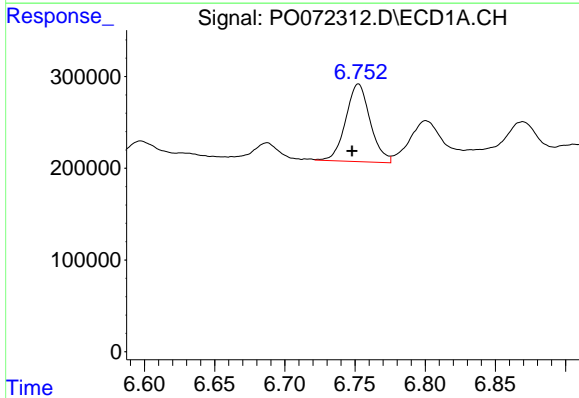
Instrument :
 ECD_O
 ClientSampled :
 HD-1

Manual Integrations
 APPROVED
 Ankita
 10/14/2020 12:02:32 PM



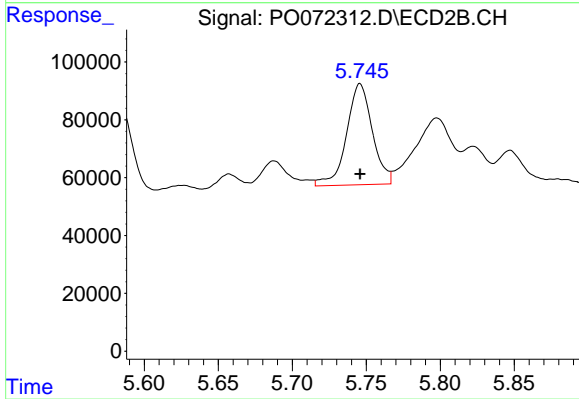
#26 AR-1254-1

R.T.: 5.584 min
 Delta R.T.: 0.000 min
 Response: 325078
 Conc: 136.03 ng/ml



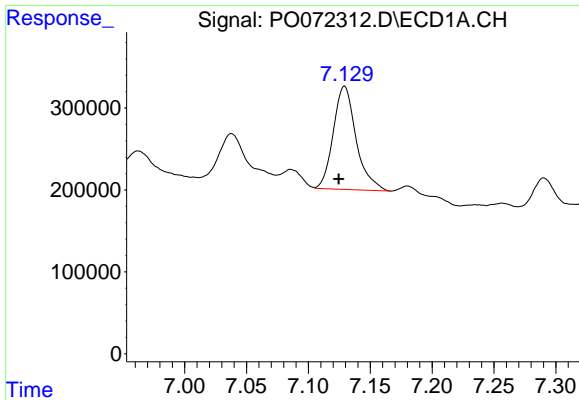
#27 AR-1254-2

R.T.: 6.753 min
 Delta R.T.: 0.005 min
 Response: 1028710
 Conc: 186.85 ng/ml



#27 AR-1254-2

R.T.: 5.746 min
 Delta R.T.: 0.000 min
 Response: 424663
 Conc: 198.54 ng/ml

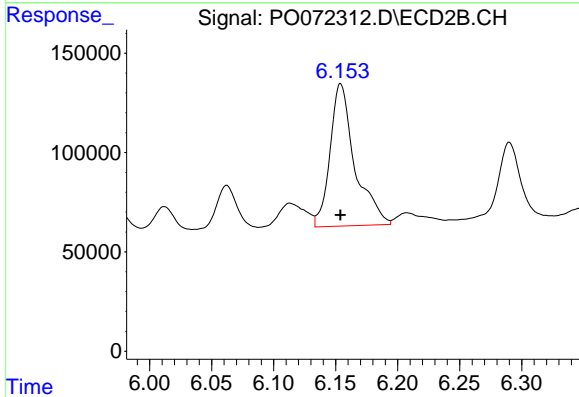


#28 AR-1254-3

R.T.: 7.129 min
 Delta R.T.: 0.004 min
 Response: 1621230
 Conc: 280.72 ng/ml m

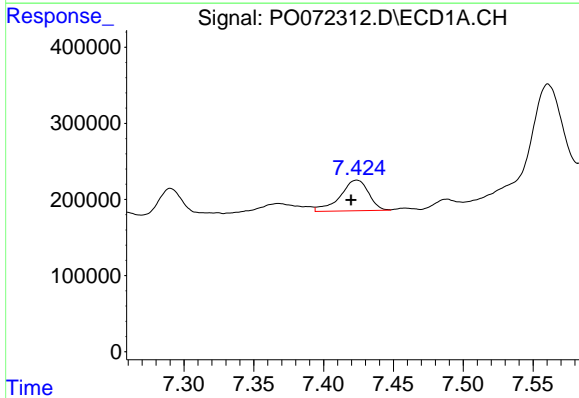
Instrument :
 ECD_O
 ClientSampled :
 HD-1

Manual Integrations
 APPROVED
 Ankita
 10/14/2020 12:02:32 PM



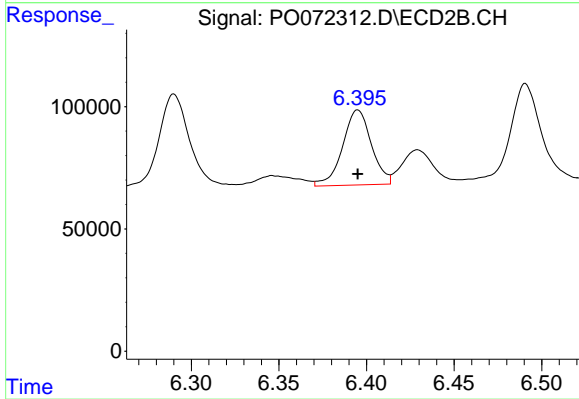
#28 AR-1254-3

R.T.: 6.154 min
 Delta R.T.: 0.000 min
 Response: 995034
 Conc: 293.07 ng/ml



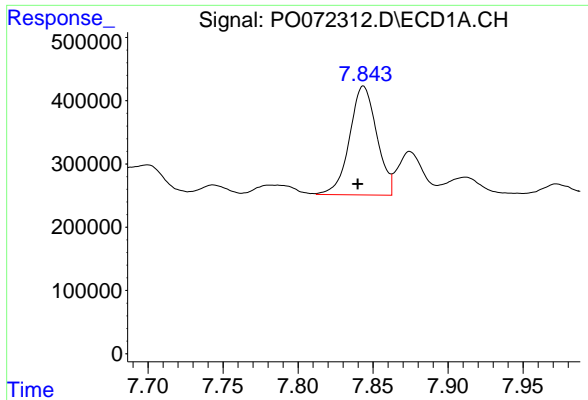
#29 AR-1254-4

R.T.: 7.424 min
 Delta R.T.: 0.004 min
 Response: 571455
 Conc: 98.09 ng/ml



#29 AR-1254-4

R.T.: 6.395 min
 Delta R.T.: 0.000 min
 Response: 351412
 Conc: 144.72 ng/ml

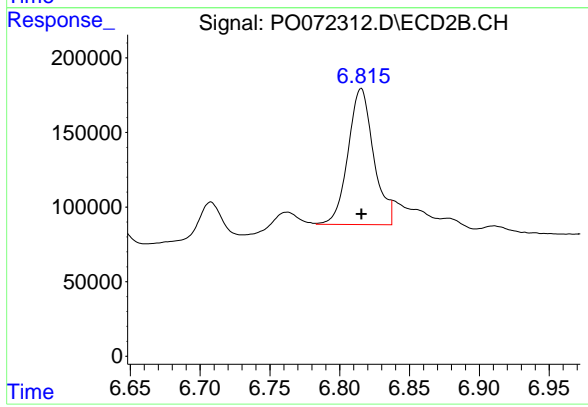


#30 AR-1254-5

R.T.: 7.843 min
 Delta R.T.: 0.003 min
 Response: 2185526
 Conc: 406.09 ng/ml m

Instrument :
 ECD_O
 ClientSampled :
 HD-1

Manual Integrations
 APPROVED
 Ankita
 10/14/2020 12:02:32 PM



#30 AR-1254-5

R.T.: 6.815 min
 Delta R.T.: 0.000 min
 Response: 1156397
 Conc: 353.41 ng/ml m