

Data Path : Z:\pestpcbsrv\HPCHEM1\ECD\_0\Data\PO101320\  
 Data File : PO072316.D  
 Signal(s) : Signal #1: ECD1A.CH Signal #2: ECD2B.CH  
 Acq On : 13 Oct 2020 16:26  
 Operator : DD\AJ  
 Sample : L4369-10  
 Misc :  
 ALS Vial : 14 Sample Multiplier: 1

**Instrument :**  
 ECD\_0  
**ClientSampled :**  
 HD-5

**Manual Integrations**  
**APPROVED**  
 Ankita  
 10/14/2020 12:02:40 PM

Integration File signal 1: autoint1.e  
 Integration File signal 2: autoint2.e  
 Quant Time: Oct 14 02:24:32 2020  
 Quant Method : Z:\pestpcbsrv\HPCHEM1\ECD\_0\methods\PO100320.M  
 Quant Title : GC EXTRACTABLES  
 QLast Update : Mon Oct 05 11:48:20 2020  
 Response via : Initial Calibration  
 Integrator: ChemStation 6890 Scale Mode: Small noise peaks clipped

Volume Inj. : 2 µl  
 Signal #1 Phase : ZB-MR2 Signal #2 Phase: ZB-MR2  
 Signal #1 Info : 30Mx0.32mmx 0.50µ Signal #2 Info : 30M x 0.32mm x 0.25µm

Compound	RT#1	RT#2	Resp#1	Resp#2	ng/ml	ng/ml
-----						
System Monitoring Compounds						
1) SA Tetrachlo...	4.325	3.508	2008138	1025885	27.958	27.389
2) SA Decachlor...	9.928	8.678	1526856	800035	13.867	14.065
Target Compounds						
26) L6 AR-1254-1	6.517	5.579	1204704	621167	344.817	259.920
27) L6 AR-1254-2	6.745	5.741	1699976	671373	308.776	313.877
28) L6 AR-1254-3	7.121	6.149	2676602	1539961	463.467	453.576
29) L6 AR-1254-4	7.416	6.390	1732249	666436	297.333m	274.460
30) L6 AR-1254-5	7.837	6.811	2868495	1835448	532.993m	560.937
31) L7 AR-1260-1	7.283	6.286	1191513	852840	248.611	333.088 #
32) L7 AR-1260-2	7.550	6.486	2713984	982884	362.340m	307.239
33) L7 AR-1260-3	7.904	6.628	570215	825807	89.441m	279.819 #
34) L7 AR-1260-4	8.130	7.107	1152144	215554	191.943	81.469 #
35) L7 AR-1260-5	8.449	7.360	1202409	500876	86.773	75.389

(f)=RT Delta > 1/2 Window (#)=Amounts differ by > 25% (m)=manual int.

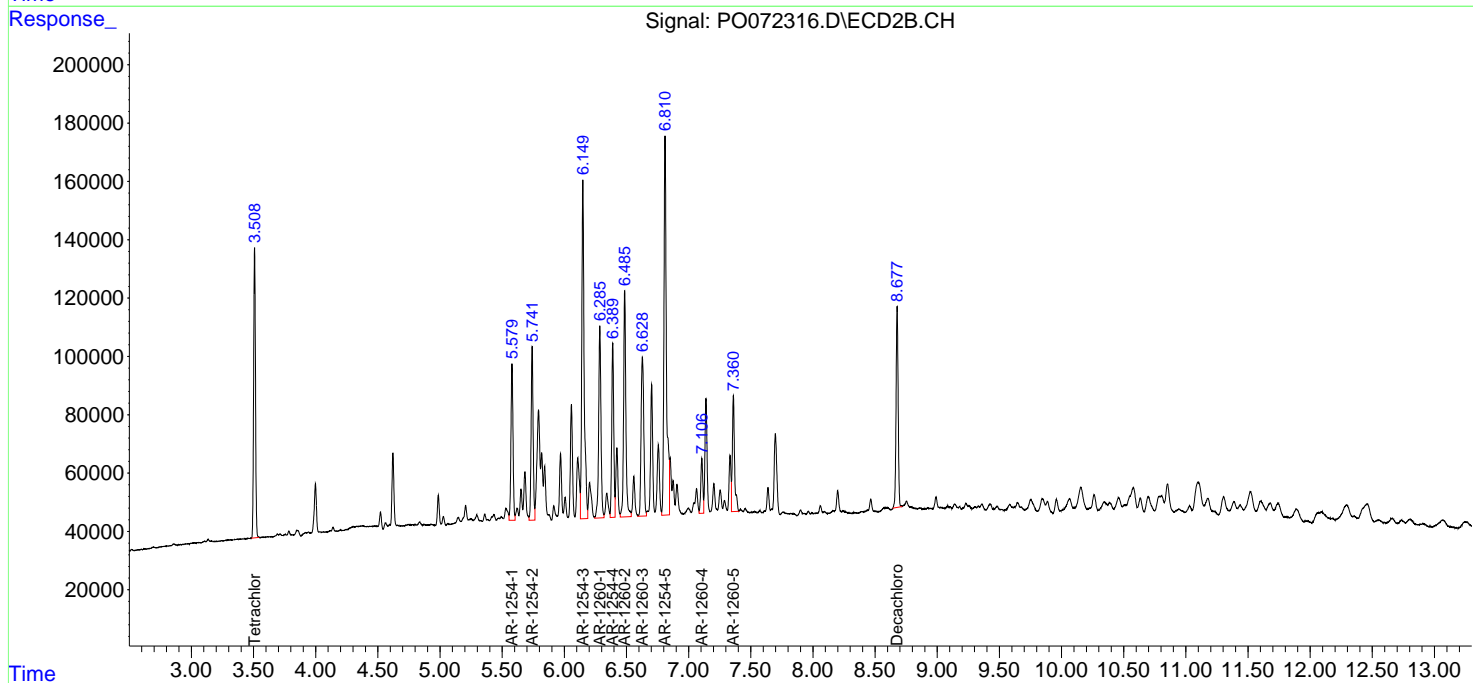
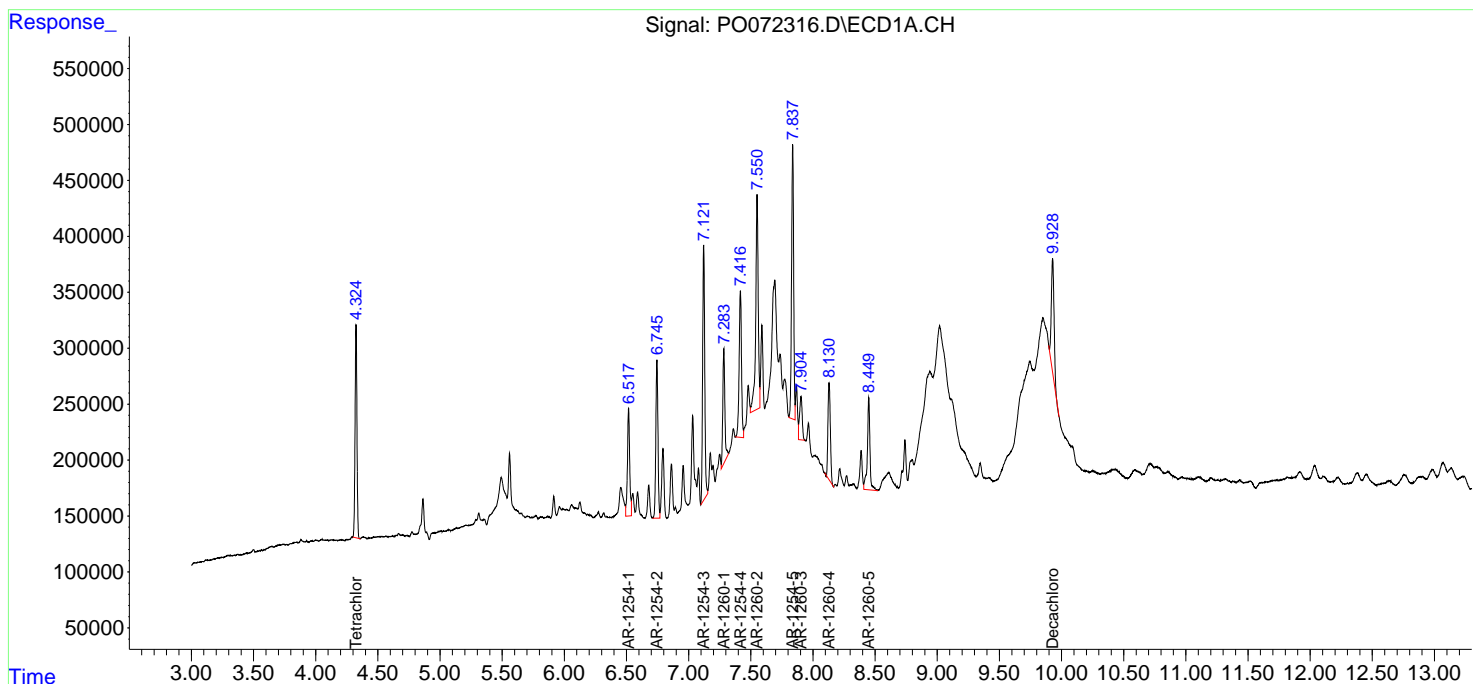
Data Path : Z:\pestpcbsrv\HPCHEM1\ECD\_0\Data\PO101320\  
 Data File : PO072316.D  
 Signal(s) : Signal #1: ECD1A.CH Signal #2: ECD2B.CH  
 Acq On : 13 Oct 2020 16:26  
 Operator : DD\AJ  
 Sample : L4369-10  
 Misc :  
 ALS Vial : 14 Sample Multiplier: 1

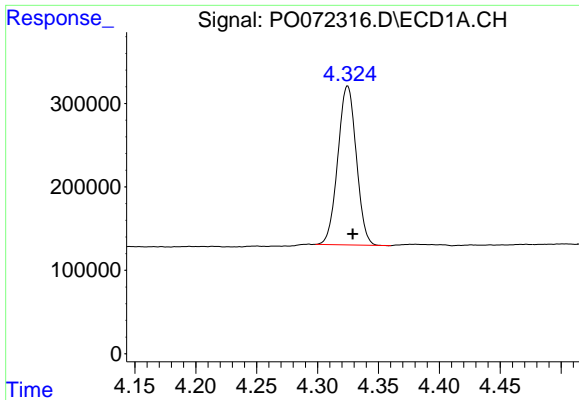
Instrument :  
 ECD\_O  
 ClientSampled :  
 HD-5

Manual Integrations  
**APPROVED**  
 Ankita  
 10/14/2020 12:02:40 PM

Integration File signal 1: autoint1.e  
 Integration File signal 2: autoint2.e  
 Quant Time: Oct 14 02:24:32 2020  
 Quant Method : Z:\pestpcbsrv\HPCHEM1\ECD\_0\methods\PO100320.M  
 Quant Title : GC EXTRACTABLES  
 QLast Update : Mon Oct 05 11:48:20 2020  
 Response via : Initial Calibration  
 Integrator: ChemStation 6890 Scale Mode: Small noise peaks clipped

Volume Inj. : 2 µl  
 Signal #1 Phase : ZB-MR1 Signal #2 Phase: ZB-MR2  
 Signal #1 Info : 30Mx0.32mmx 0.50µ Signal #2 Info : 30M x 0.32mm x 0.25µm





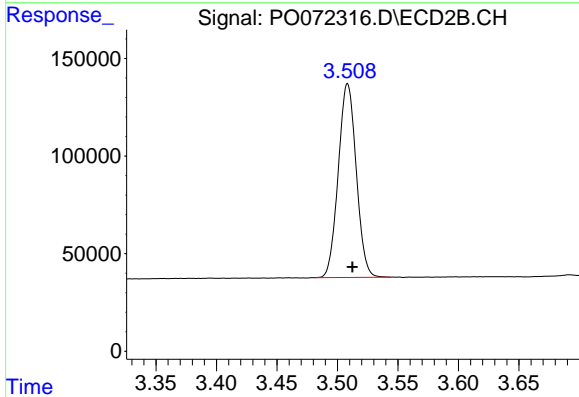
#1 Tetrachloro-m-xylene

R.T.: 4.325 min  
 Delta R.T.: -0.004 min  
 Response: 2008138  
 Conc: 27.96 ng/ml

Instrument :  
 ECD\_O  
 ClientSampled :  
 HD-5

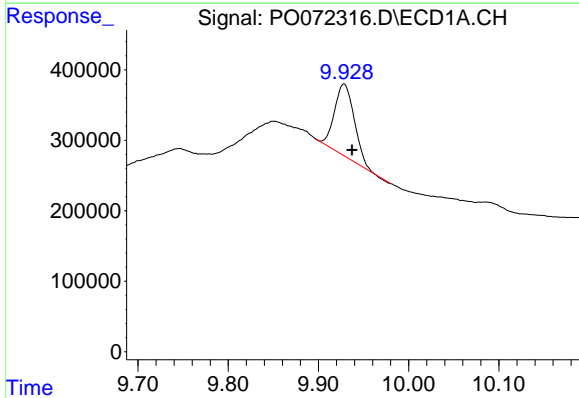
Manual Integrations  
 APPROVED

Ankita  
 10/14/2020 12:02:40 PM



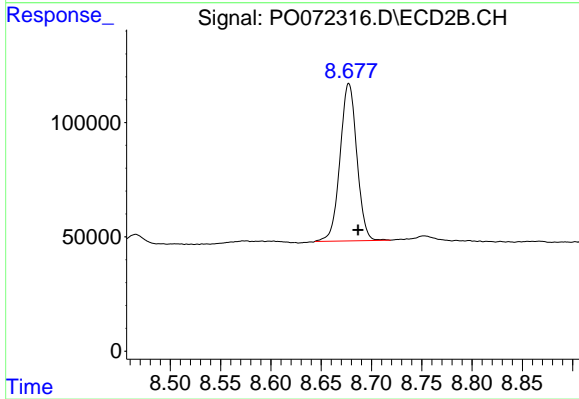
#1 Tetrachloro-m-xylene

R.T.: 3.508 min  
 Delta R.T.: -0.004 min  
 Response: 1025885  
 Conc: 27.39 ng/ml



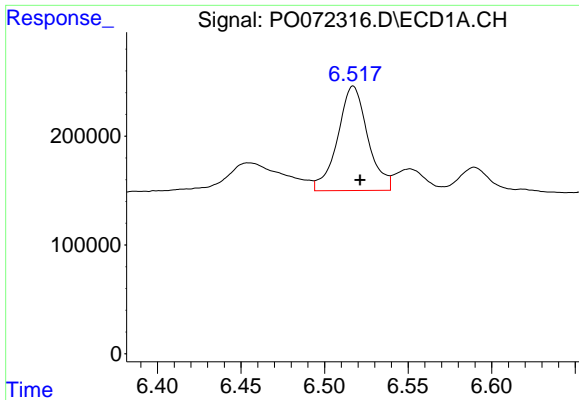
#2 Decachlorobiphenyl

R.T.: 9.928 min  
 Delta R.T.: -0.009 min  
 Response: 1526856  
 Conc: 13.87 ng/ml



#2 Decachlorobiphenyl

R.T.: 8.678 min  
 Delta R.T.: -0.009 min  
 Response: 800035  
 Conc: 14.07 ng/ml

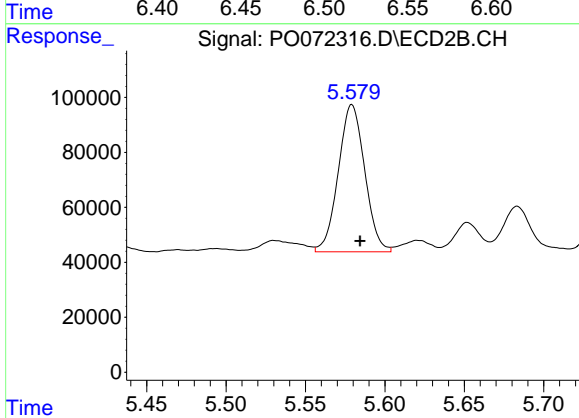


#26 AR-1254-1

R.T.: 6.517 min  
 Delta R.T.: -0.004 min  
 Response: 1204704  
 Conc: 344.82 ng/ml

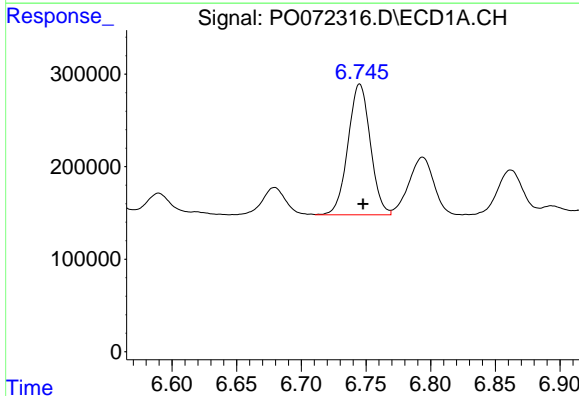
Instrument :  
 ECD\_O  
 ClientSampled :  
 HD-5

Manual Integrations  
 APPROVED  
 Ankita  
 10/14/2020 12:02:40 PM



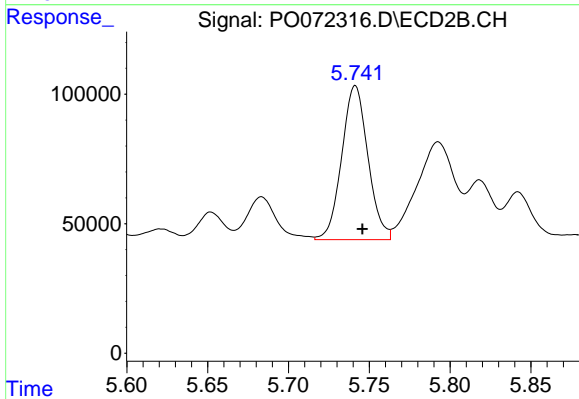
#26 AR-1254-1

R.T.: 5.579 min  
 Delta R.T.: -0.005 min  
 Response: 621167  
 Conc: 259.92 ng/ml



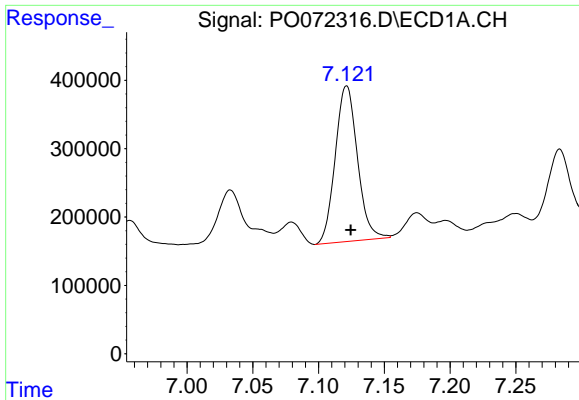
#27 AR-1254-2

R.T.: 6.745 min  
 Delta R.T.: -0.003 min  
 Response: 1699976  
 Conc: 308.78 ng/ml



#27 AR-1254-2

R.T.: 5.741 min  
 Delta R.T.: -0.004 min  
 Response: 671373  
 Conc: 313.88 ng/ml

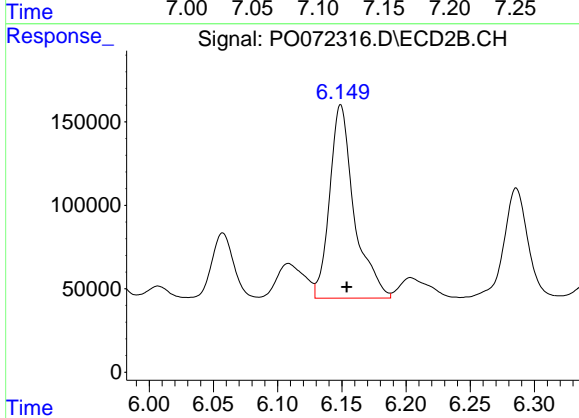


#28 AR-1254-3

R.T.: 7.121 min  
 Delta R.T.: -0.003 min  
 Response: 2676602  
 Conc: 463.47 ng/ml

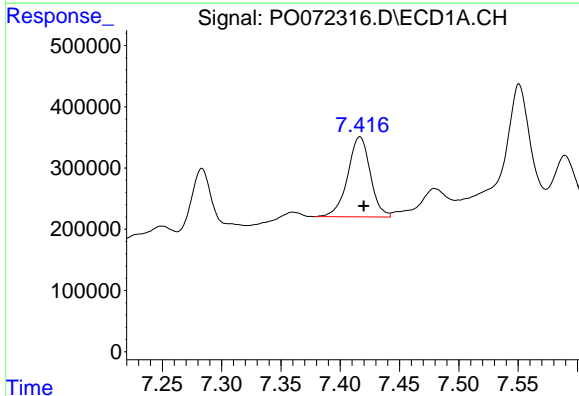
**Instrument :**  
 ECD\_O  
**ClientSampled :**  
 HD-5

**Manual Integrations**  
**APPROVED**  
 Ankita  
 10/14/2020 12:02:40 PM



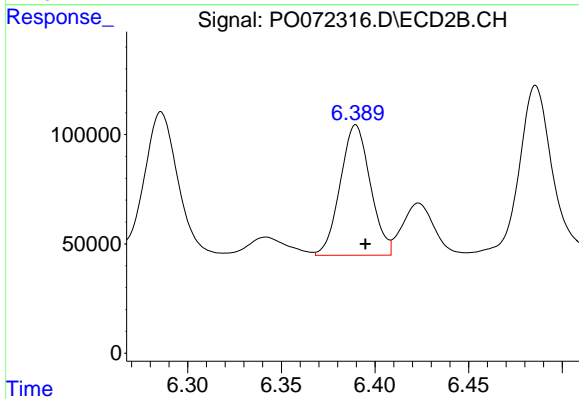
#28 AR-1254-3

R.T.: 6.149 min  
 Delta R.T.: -0.005 min  
 Response: 1539961  
 Conc: 453.58 ng/ml



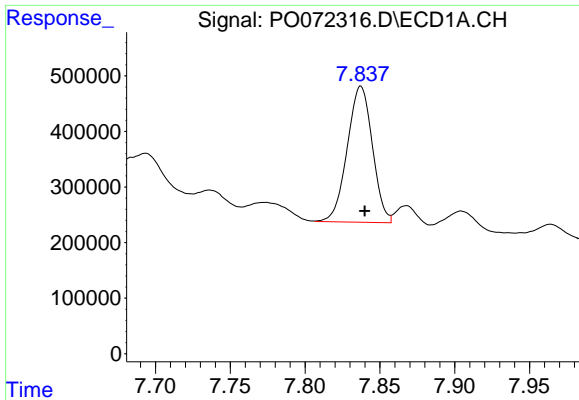
#29 AR-1254-4

R.T.: 7.416 min  
 Delta R.T.: -0.003 min  
 Response: 1732249  
 Conc: 297.33 ng/ml m



#29 AR-1254-4

R.T.: 6.390 min  
 Delta R.T.: -0.005 min  
 Response: 666436  
 Conc: 274.46 ng/ml

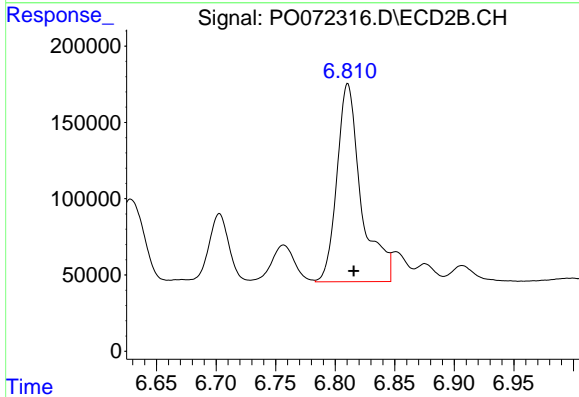


#30 AR-1254-5

R.T.: 7.837 min  
 Delta R.T.: -0.003 min  
 Response: 2868495  
 Conc: 532.99 ng/ml m

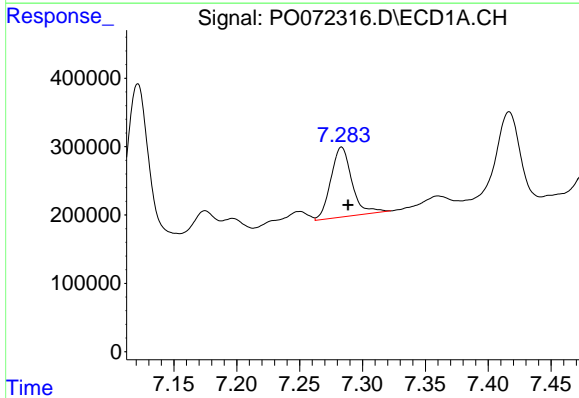
Instrument :  
 ECD\_O  
 ClientSampled :  
 HD-5

Manual Integrations  
 APPROVED  
 Ankita  
 10/14/2020 12:02:40 PM



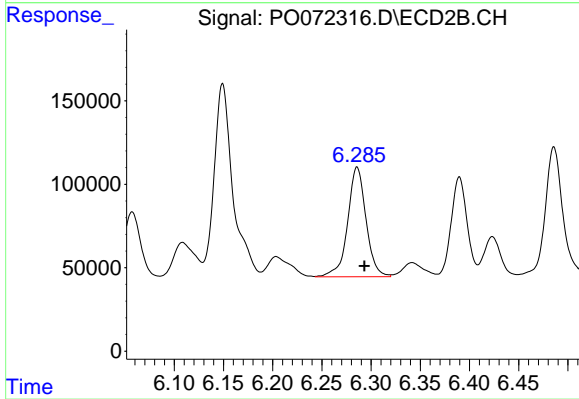
#30 AR-1254-5

R.T.: 6.811 min  
 Delta R.T.: -0.005 min  
 Response: 1835448  
 Conc: 560.94 ng/ml



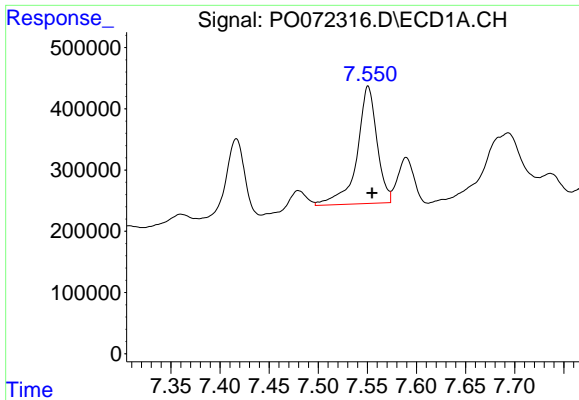
#31 AR-1260-1

R.T.: 7.283 min  
 Delta R.T.: -0.005 min  
 Response: 1191513  
 Conc: 248.61 ng/ml



#31 AR-1260-1

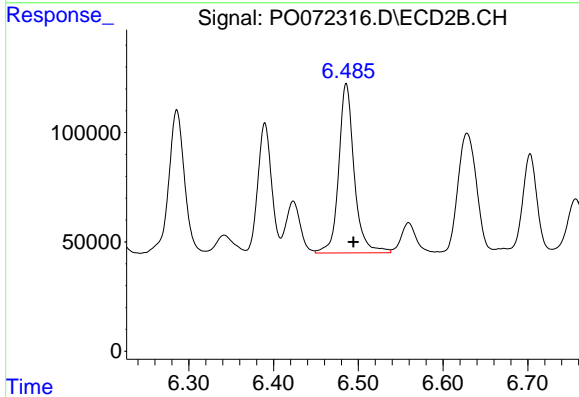
R.T.: 6.286 min  
 Delta R.T.: -0.007 min  
 Response: 852840  
 Conc: 333.09 ng/ml



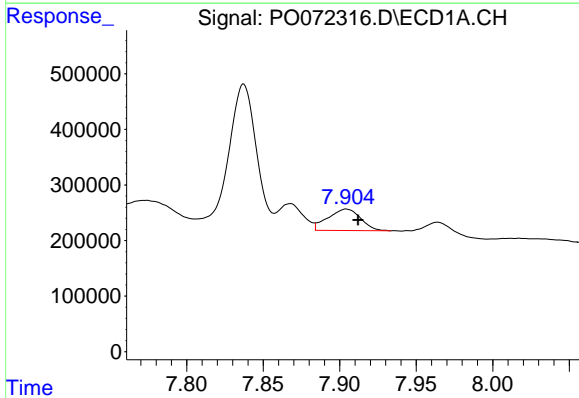
#32 AR-1260-2  
 R.T.: 7.550 min  
 Delta R.T.: -0.004 min  
 Response: 2713984  
 Conc: 362.34 ng/ml m

Instrument :  
 ECD\_O  
 ClientSampled :  
 HD-5

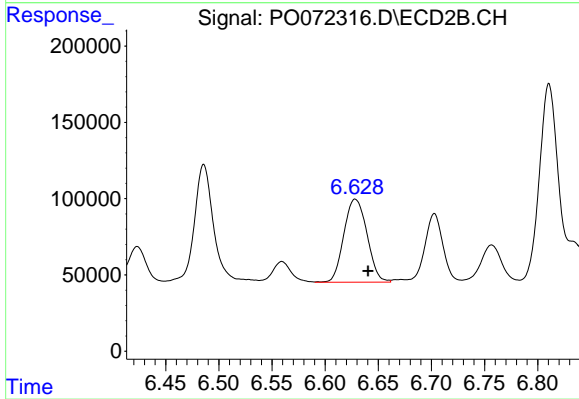
Manual Integrations  
 APPROVED  
 Ankita  
 10/14/2020 12:02:40 PM



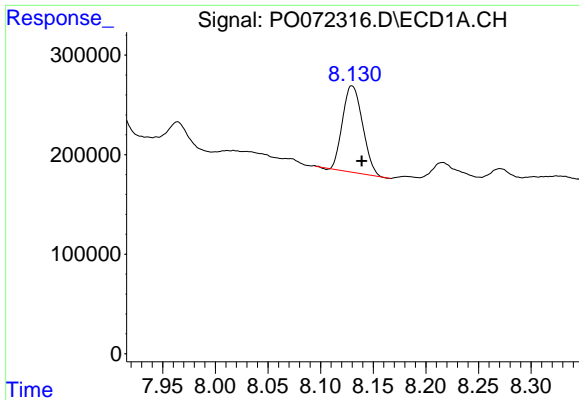
#32 AR-1260-2  
 R.T.: 6.486 min  
 Delta R.T.: -0.008 min  
 Response: 982884  
 Conc: 307.24 ng/ml



#33 AR-1260-3  
 R.T.: 7.904 min  
 Delta R.T.: -0.008 min  
 Response: 570215  
 Conc: 89.44 ng/ml m



#33 AR-1260-3  
 R.T.: 6.628 min  
 Delta R.T.: -0.012 min  
 Response: 825807  
 Conc: 279.82 ng/ml

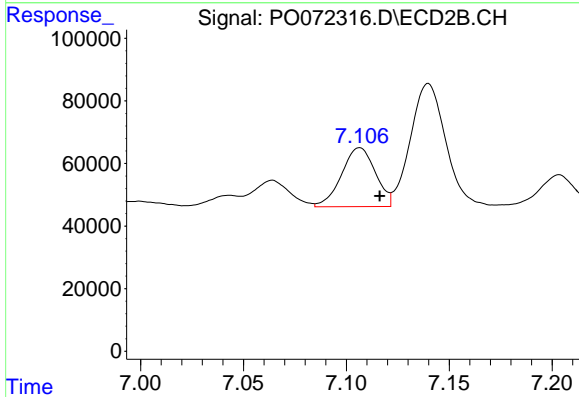


#34 AR-1260-4

R.T.: 8.130 min  
 Delta R.T.: -0.009 min  
 Response: 1152144  
 Conc: 191.94 ng/ml

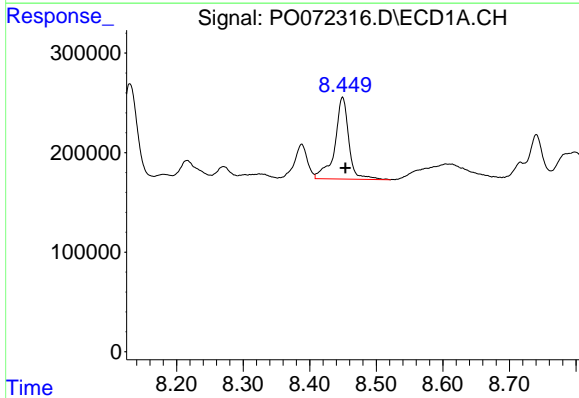
Instrument :  
 ECD\_O  
 ClientSampled :  
 HD-5

Manual Integrations  
**APPROVED**  
 Ankita  
 10/14/2020 12:02:40 PM



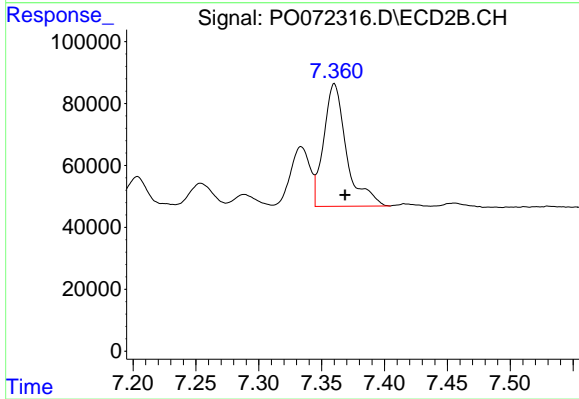
#34 AR-1260-4

R.T.: 7.107 min  
 Delta R.T.: -0.010 min  
 Response: 215554  
 Conc: 81.47 ng/ml



#35 AR-1260-5

R.T.: 8.449 min  
 Delta R.T.: -0.005 min  
 Response: 1202409  
 Conc: 86.77 ng/ml



#35 AR-1260-5

R.T.: 7.360 min  
 Delta R.T.: -0.009 min  
 Response: 500876  
 Conc: 75.39 ng/ml