

Data Path : Z:\pestpcbsrv\HPCHEM1\ECD_0\Data\PO101320\
 Data File : PO072322.D
 Signal(s) : Signal #1: ECD1A.CH Signal #2: ECD2B.CH
 Acq On : 13 Oct 2020 18:09
 Operator : DD\AJ
 Sample : I.BLK
 Misc :
 ALS Vial : 2 Sample Multiplier: 1

Instrument :
 ECD_0
 ClientSampleId :
 I.BLK

Integration File signal 1: autoint1.e
 Integration File signal 2: autoint2.e
 Quant Time: Oct 14 02:27:03 2020
 Quant Method : Z:\pestpcbsrv\HPCHEM1\ECD_0\methods\PO100320.M
 Quant Title : GC EXTRACTABLES
 QLast Update : Mon Oct 05 11:48:20 2020
 Response via : Initial Calibration
 Integrator: ChemStation 6890 Scale Mode: Small noise peaks clipped

Volume Inj. : 2 µl
 Signal #1 Phase : ZB-MR1 Signal #2 Phase: ZB-MR2
 Signal #1 Info : 30Mx0.32mmx 0.50µ Signal #2 Info : 30M x 0.32mm x 0.25µm

Compound	RT#1	RT#2	Resp#1	Resp#2	ng/ml	ng/ml

System Monitoring Compounds						
1) SA Tetrachlo...	4.324	3.508	1464554	752635	20.390	20.094
2) SA Decachlor...	9.928	8.678	2291835	1143948	20.815	20.112

Target Compounds

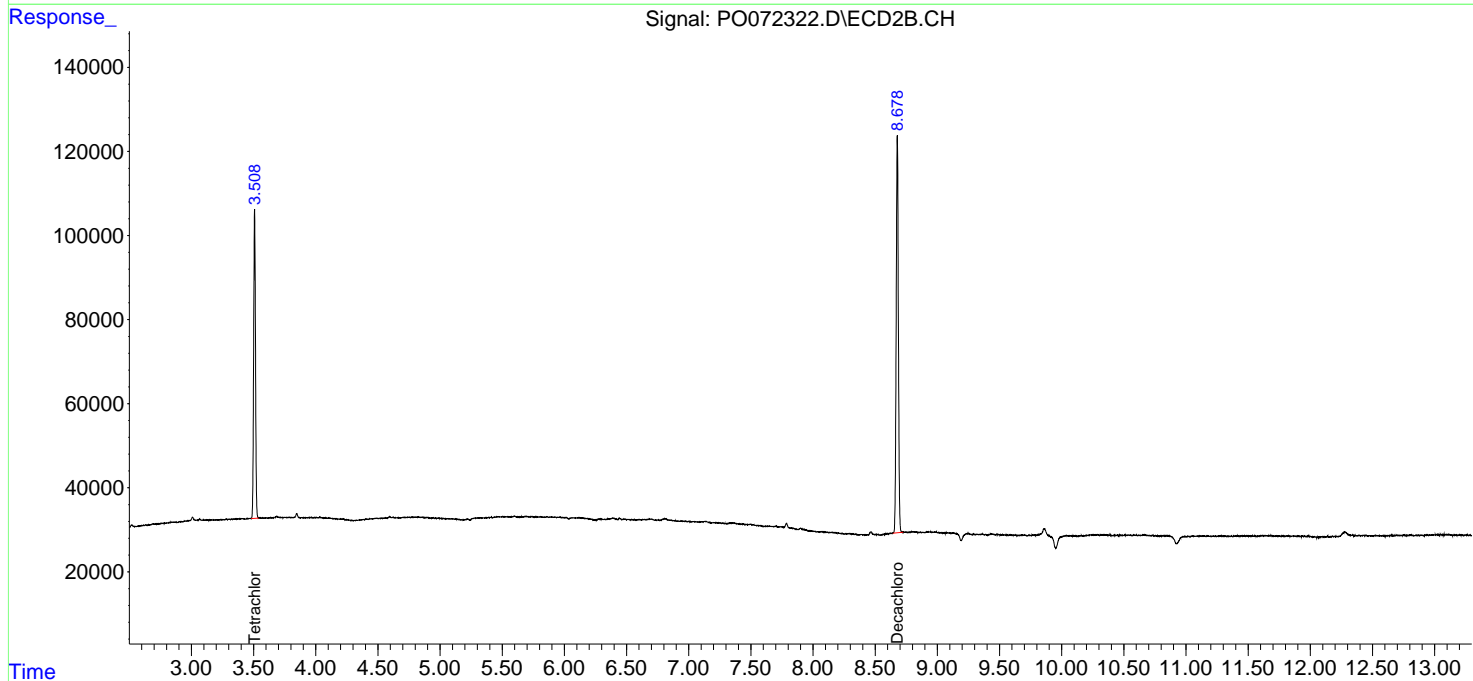
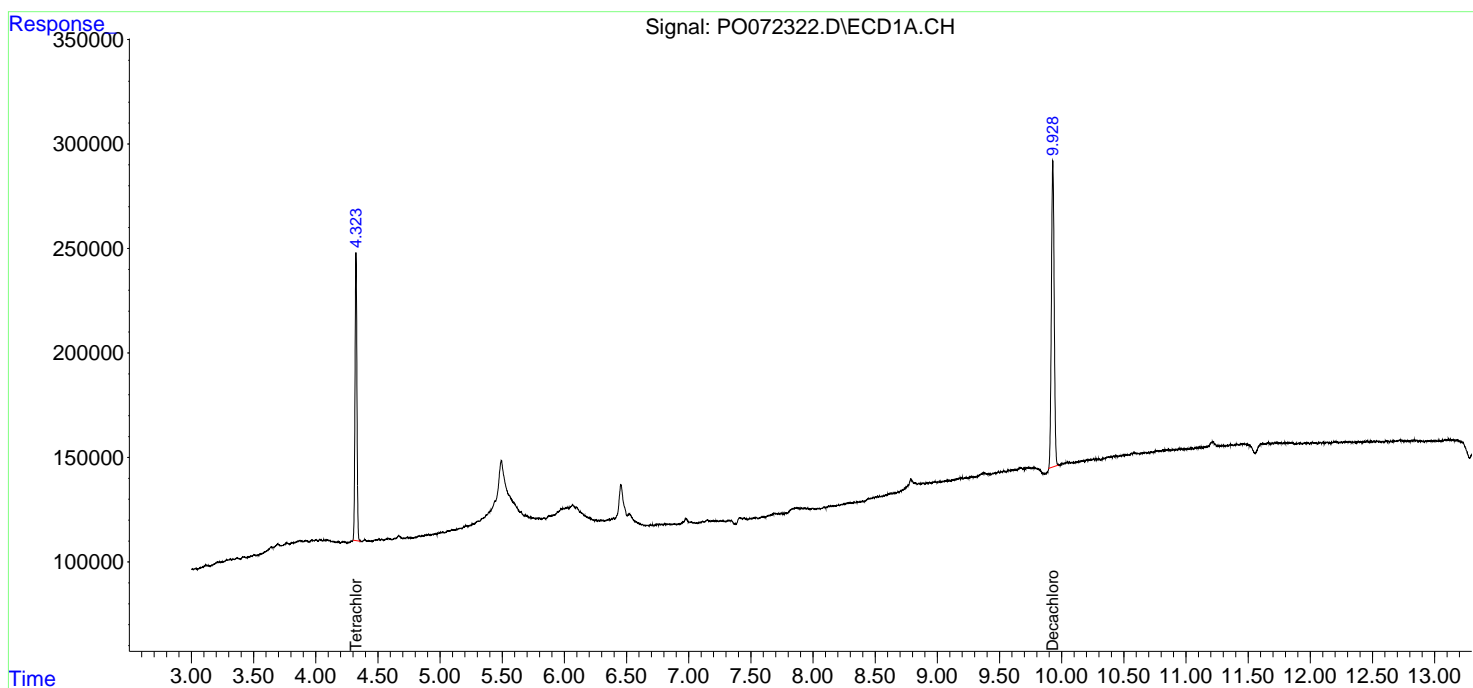
(f)=RT Delta > 1/2 Window (#)=Amounts differ by > 25% (m)=manual int.

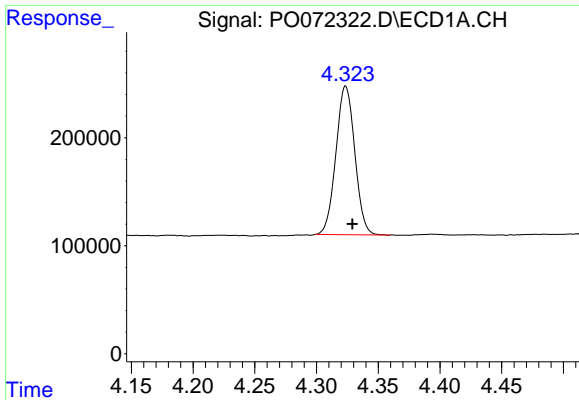
Data Path : Z:\pestpcbsrv\HPCHEM1\ECD_0\Data\PO101320\
 Data File : PO072322.D
 Signal(s) : Signal #1: ECD1A.CH Signal #2: ECD2B.CH
 Acq On : 13 Oct 2020 18:09
 Operator : DD\AJ
 Sample : I.BLK
 Misc :
 ALS Vial : 2 Sample Multiplier: 1

Instrument :
 ECD_O
 ClientSampleId :
 I.BLK

Integration File signal 1: autoint1.e
 Integration File signal 2: autoint2.e
 Quant Time: Oct 14 02:27:03 2020
 Quant Method : Z:\pestpcbsrv\HPCHEM1\ECD_0\methods\PO100320.M
 Quant Title : GC EXTRACTABLES
 QLast Update : Mon Oct 05 11:48:20 2020
 Response via : Initial Calibration
 Integrator: ChemStation 6890 Scale Mode: Small noise peaks clipped

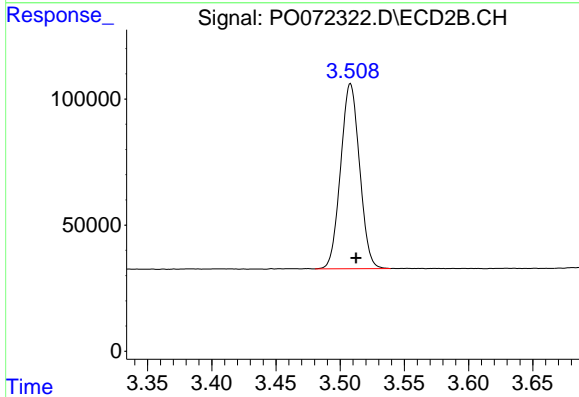
Volume Inj. : 2 µl
 Signal #1 Phase : ZB-MR1 Signal #2 Phase: ZB-MR2
 Signal #1 Info : 30Mx0.32mmx 0.50µ Signal #2 Info : 30M x 0.32mm x 0.25µm



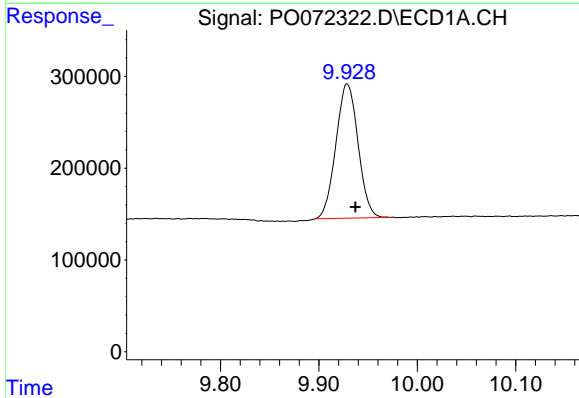


#1 Tetrachloro-m-xylene
 R.T.: 4.324 min
 Delta R.T.: -0.005 min
 Response: 1464554
 Conc: 20.39 ng/ml

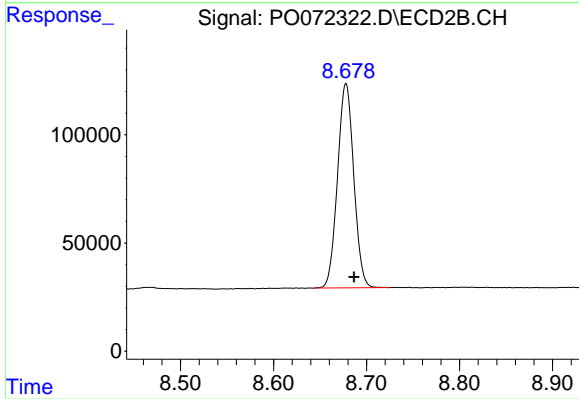
Instrument :
 ECD_O
 ClientSampled :
 I.BLK



#1 Tetrachloro-m-xylene
 R.T.: 3.508 min
 Delta R.T.: -0.004 min
 Response: 752635
 Conc: 20.09 ng/ml



#2 Decachlorobiphenyl
 R.T.: 9.928 min
 Delta R.T.: -0.009 min
 Response: 2291835
 Conc: 20.81 ng/ml



#2 Decachlorobiphenyl
 R.T.: 8.678 min
 Delta R.T.: -0.009 min
 Response: 1143948
 Conc: 20.11 ng/ml