

Data Path : Z:\pestpcbsrv\HPCHEM1\ECD\_0\Data\PO101320\  
 Data File : PO072325.D  
 Signal(s) : Signal #1: ECD1A.CH Signal #2: ECD2B.CH  
 Acq On : 13 Oct 2020 19:00  
 Operator : DD\AJ  
 Sample : L4375-05  
 Misc :  
 ALS Vial : 21 Sample Multiplier: 1

Instrument :  
 ECD\_0  
 ClientSampleId :  
 S1

Integration File signal 1: autoint1.e  
 Integration File signal 2: autoint2.e  
 Quant Time: Oct 14 02:28:15 2020  
 Quant Method : Z:\pestpcbsrv\HPCHEM1\ECD\_0\methods\PO100320.M  
 Quant Title : GC EXTRACTABLES  
 QLast Update : Mon Oct 05 11:48:20 2020  
 Response via : Initial Calibration  
 Integrator: ChemStation 6890 Scale Mode: Small noise peaks clipped

Volume Inj. : 2 µl  
 Signal #1 Phase : ZB-MR1 Signal #2 Phase: ZB-MR2  
 Signal #1 Info : 30Mx0.32mmx 0.50µ Signal #2 Info : 30M x 0.32mm x 0.25µm

Compound	RT#1	RT#2	Resp#1	Resp#2	ng/ml	ng/ml
-----						
System Monitoring Compounds						
1) SA Tetrachlo...	4.324	3.508	1960904	1000482	27.301	26.711
2) SA Decachlor...	9.928	8.678	2001732	1004003	18.180	17.651

Target Compounds

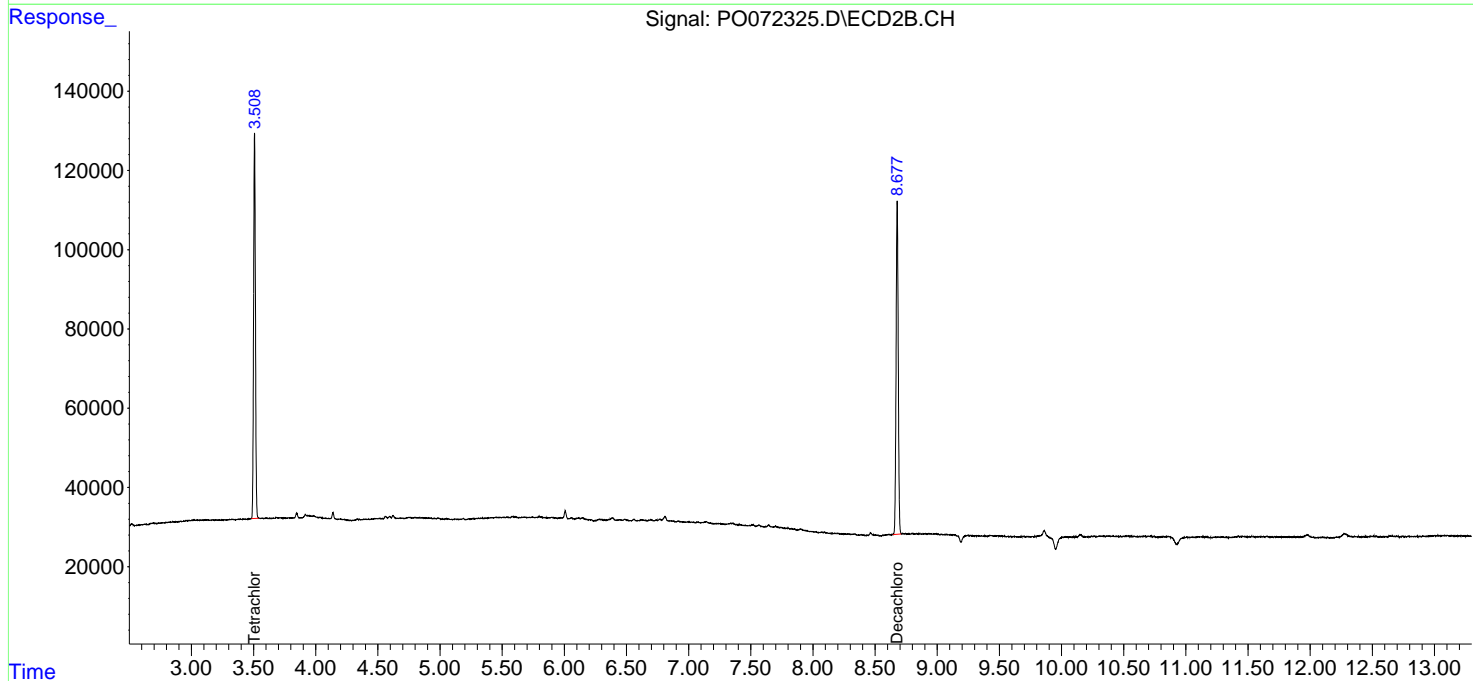
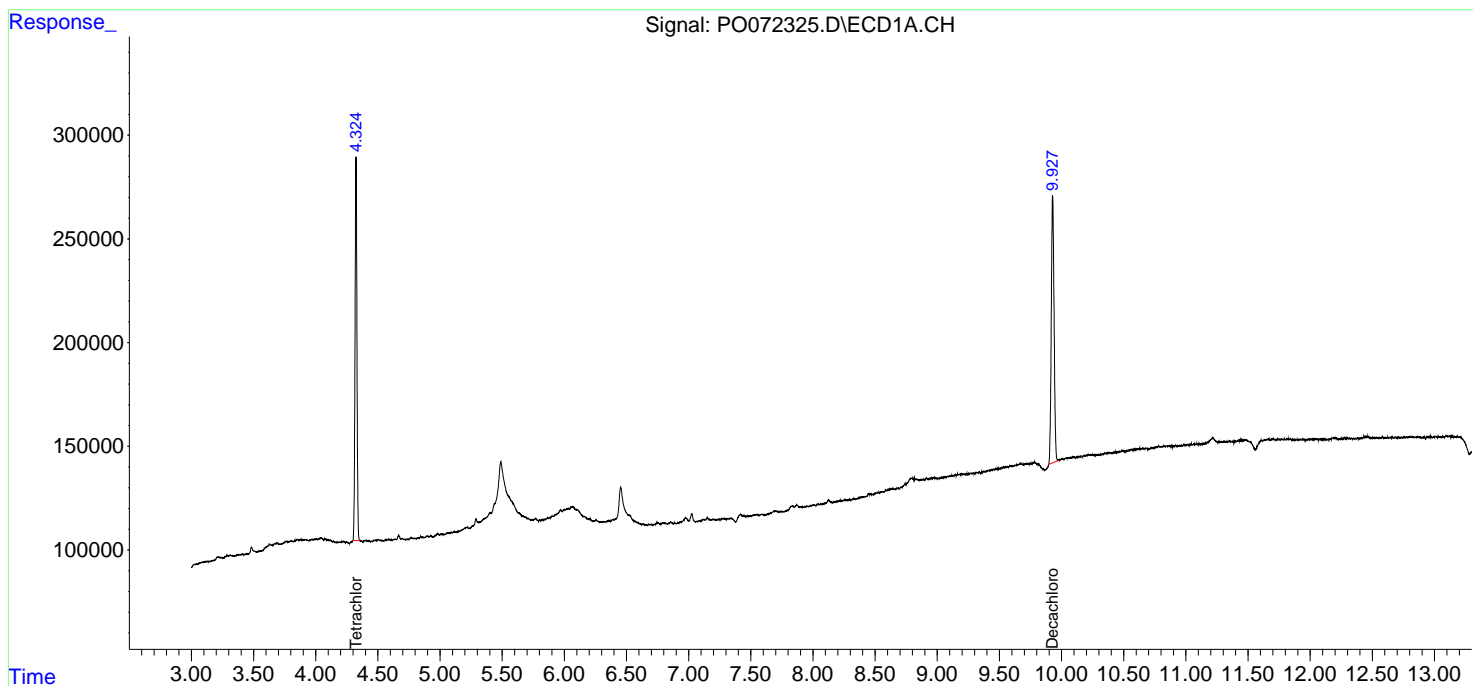
(f)=RT Delta > 1/2 Window (#)=Amounts differ by > 25% (m)=manual int.

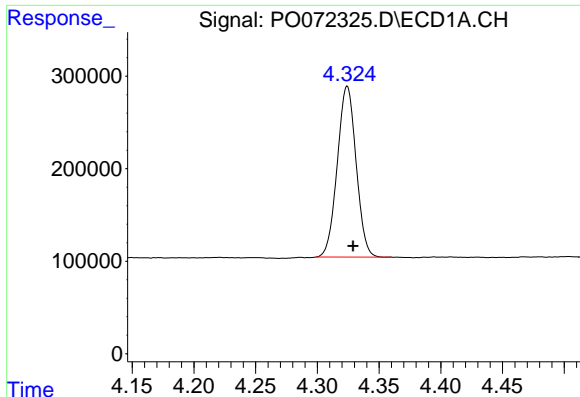
Data Path : Z:\pestpcbsrv\HPCHEM1\ECD\_0\Data\PO101320\  
 Data File : PO072325.D  
 Signal(s) : Signal #1: ECD1A.CH Signal #2: ECD2B.CH  
 Acq On : 13 Oct 2020 19:00  
 Operator : DD\AJ  
 Sample : L4375-05  
 Misc :  
 ALS Vial : 21 Sample Multiplier: 1

Instrument :  
 ECD\_O  
 ClientSampleID :  
 S1

Integration File signal 1: autoint1.e  
 Integration File signal 2: autoint2.e  
 Quant Time: Oct 14 02:28:15 2020  
 Quant Method : Z:\pestpcbsrv\HPCHEM1\ECD\_0\methods\PO100320.M  
 Quant Title : GC EXTRACTABLES  
 QLast Update : Mon Oct 05 11:48:20 2020  
 Response via : Initial Calibration  
 Integrator: ChemStation 6890 Scale Mode: Small noise peaks clipped

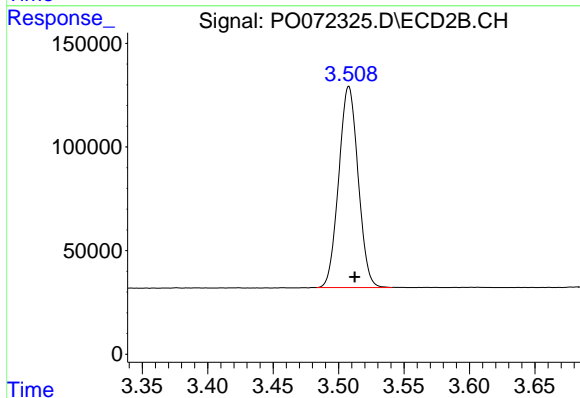
Volume Inj. : 2 µl  
 Signal #1 Phase : ZB-MR1 Signal #2 Phase: ZB-MR2  
 Signal #1 Info : 30Mx0.32mmx 0.50µ Signal #2 Info : 30M x 0.32mm x 0.25µm



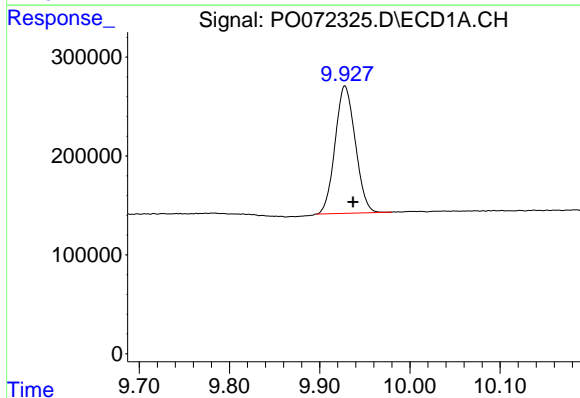


#1 Tetrachloro-m-xylene  
 R.T.: 4.324 min  
 Delta R.T.: -0.005 min  
 Response: 1960904  
 Conc: 27.30 ng/ml

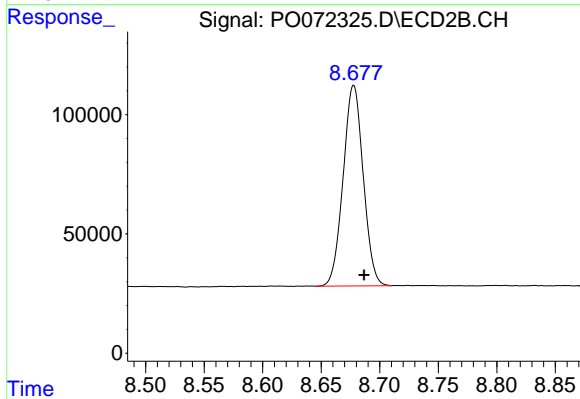
Instrument :  
 ECD\_O  
 ClientSampled :  
 S1



#1 Tetrachloro-m-xylene  
 R.T.: 3.508 min  
 Delta R.T.: -0.004 min  
 Response: 1000482  
 Conc: 26.71 ng/ml



#2 Decachlorobiphenyl  
 R.T.: 9.928 min  
 Delta R.T.: -0.009 min  
 Response: 2001732  
 Conc: 18.18 ng/ml



#2 Decachlorobiphenyl  
 R.T.: 8.678 min  
 Delta R.T.: -0.009 min  
 Response: 1004003  
 Conc: 17.65 ng/ml