

Data Path : Z:\pestpcbsrv\HPCHEM1\ECD_0\Data\PO101323\
 Data File : PO098805.D
 Signal(s) : Signal #1: ECD1A.ch Signal #2: ECD2B.ch
 Acq On : 13 Oct 2023 15:43
 Operator : YP/AJ
 Sample : 04876-01
 Misc :
 ALS Vial : 10 Sample Multiplier: 1

Instrument :
 ECD_0
ClientSampleId :
 30103

Manual Integrations
APPROVED

Reviewed By :Yogesh Patel 10/16/2023
 Supervised By :Ankita Jodhani 10/17/2023

Integration File signal 1: autoint1.e
 Integration File signal 2: autoint2.e
 Quant Time: Oct 14 00:35:04 2023
 Quant Method : Z:\pestpcbsrv\HPCHEM1\ECD_0\methods\PO092723.M
 Quant Title : GC EXTRACTABLES
 QLast Update : Thu Sep 28 01:18:56 2023
 Response via : Initial Calibration
 Integrator: ChemStation

Volume Inj. : 2 µl
 Signal #1 Phase : ZB-MR1 Signal #2 Phase: ZB-MR2
 Signal #1 Info : 30Mx0.32mmx 0.50µ Signal #2 Info : 30M x 0.32mm x 0.25µm

Compound	RT#1	RT#2	Resp#1	Resp#2	ng/ml	ng/ml

System Monitoring Compounds						
1) SA Tetrachlo...	4.477	3.633	37092590	15534410	19.317m	19.945
2) SA Decachlor...	10.288	8.637	26168113	11241872	21.558	20.983
Target Compounds						
26) L6 AR-1254-1	6.511	5.516	2095788	1450017	33.180	37.816m
27) L6 AR-1254-2	6.730	5.664	3686493	1153652	38.414	33.509m
28) L6 AR-1254-3	7.099	6.067	4110761	1858336	43.688	35.764m
29) L6 AR-1254-4	7.384	6.296	2748746	1115306	47.210	40.633m
30) L6 AR-1254-5	7.804	6.715	3611642	1577804	51.710	36.424 #

(f)=RT Delta > 1/2 Window (#)=Amounts differ by > 25% (m)=manual int.

Data Path : Z:\pestpcbsrv\HPCHEM1\ECD_O\Data\PO101323\
Data File : PO098805.D
Signal(s) : Signal #1: ECD1A.ch Signal #2: ECD2B.ch
Acq On : 13 Oct 2023 15:43
Operator : YP/AJ
Sample : 04876-01
Misc :
ALS Vial : 10 Sample Multiplier: 1

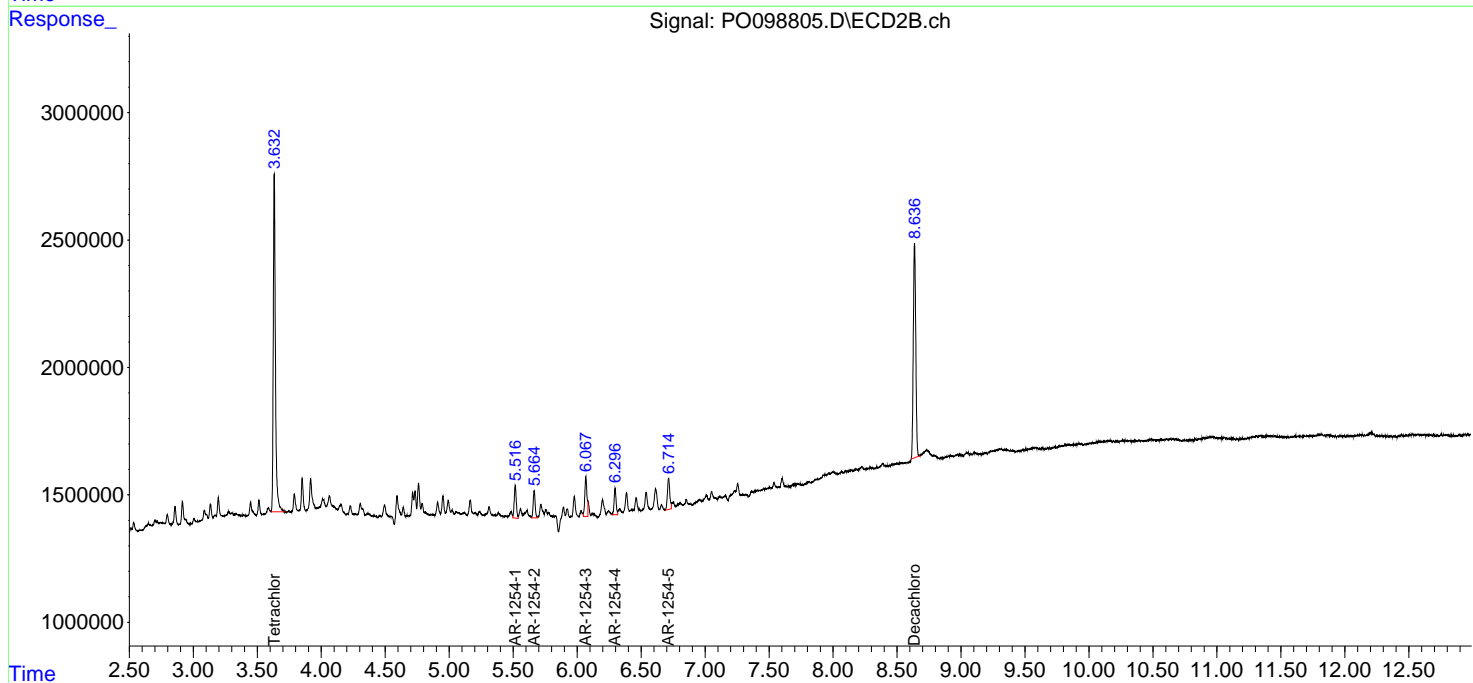
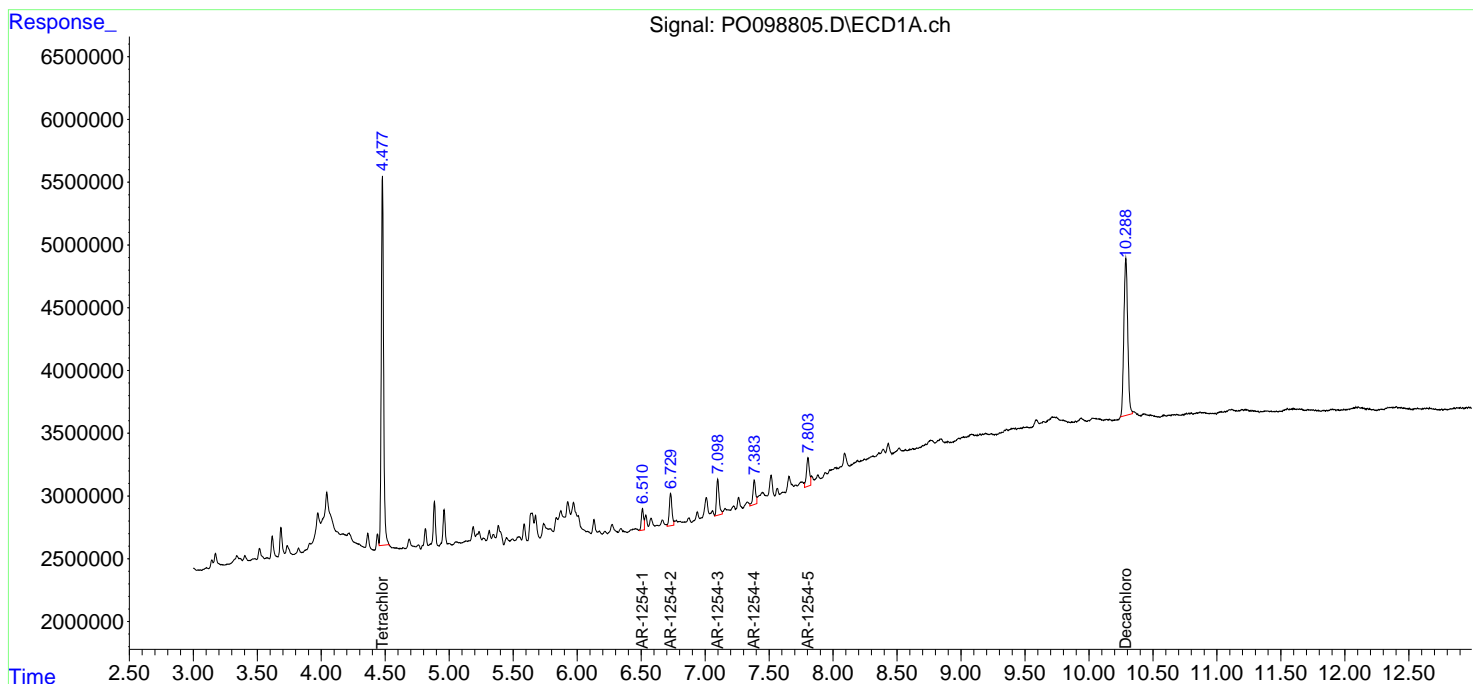
Instrument :
ECD_O
ClientSampleId :
30103

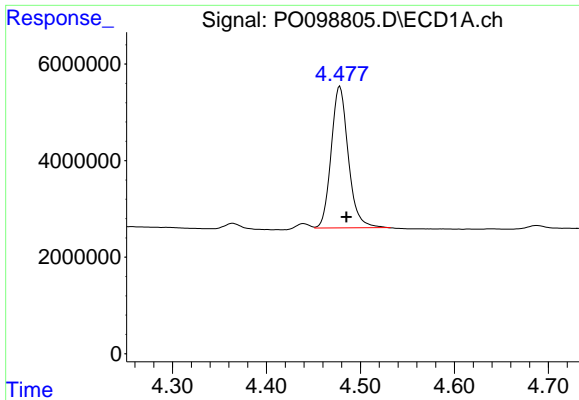
Manual Integrations
APPROVED

Reviewed By :Yogesh Patel 10/16/2023
Supervised By :Ankita Jodhani 10/17/2023

Integration File signal 1: autoint1.e
Integration File signal 2: autoint2.e
Quant Time: Oct 14 00:35:04 2023
Quant Method : Z:\pestpcbsrv\HPCHEM1\ECD_O\methods\PO092723.M
Quant Title : GC EXTRACTABLES
QLast Update : Thu Sep 28 01:18:56 2023
Response via : Initial Calibration
Integrator: ChemStation

Volume Inj. : 2 µl
Signal #1 Phase : ZB-MR1 Signal #2 Phase: ZB-MR2
Signal #1 Info : 30Mx0.32mmx 0.50µm Signal #2 Info : 30M x 0.32mm x 0.25µm



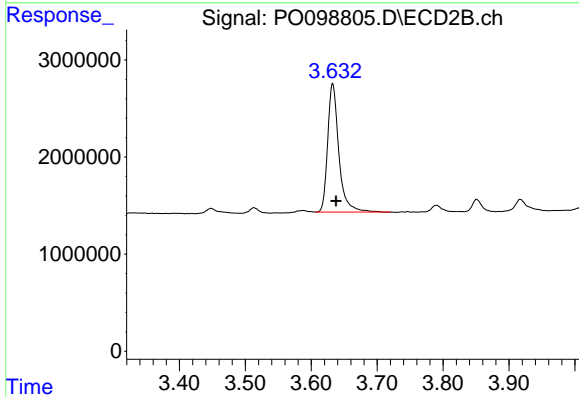


#1 Tetrachloro-m-xylene
 R.T.: 4.477 min
 Delta R.T.: -0.008 min
 Response: 37092590
 Conc: 19.32 ng/ml

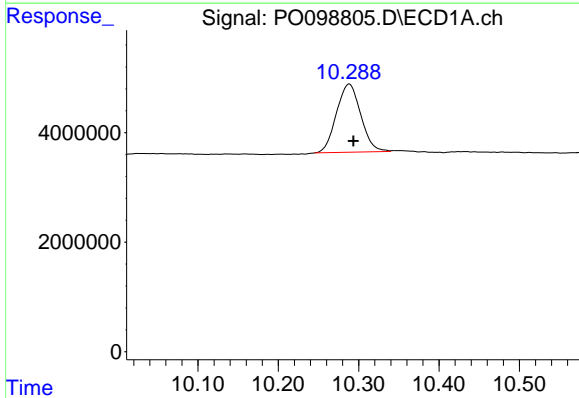
Instrument :
 ECD_O
 ClientSampleId :
 30103

Manual Integrations
 APPROVED

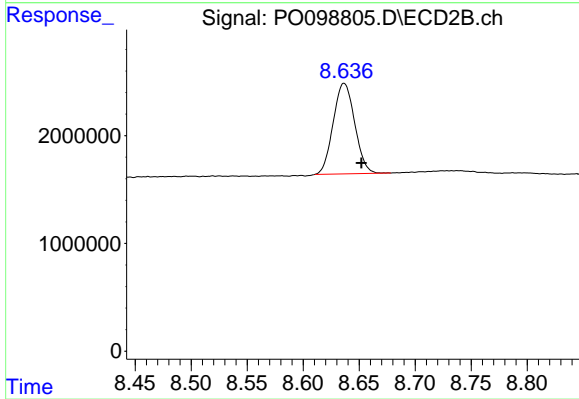
Reviewed By :Yogesh Patel 10/16/2023
 Supervised By :Ankita Jodhani 10/17/2023



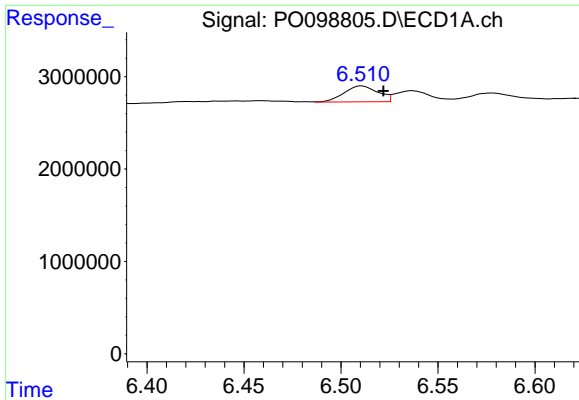
#1 Tetrachloro-m-xylene
 R.T.: 3.633 min
 Delta R.T.: -0.005 min
 Response: 15534410
 Conc: 19.95 ng/ml



#2 Decachlorobiphenyl
 R.T.: 10.288 min
 Delta R.T.: -0.005 min
 Response: 26168113
 Conc: 21.56 ng/ml



#2 Decachlorobiphenyl
 R.T.: 8.637 min
 Delta R.T.: -0.015 min
 Response: 11241872
 Conc: 20.98 ng/ml



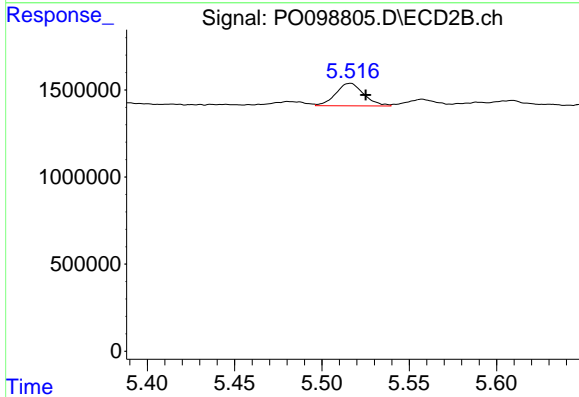
#26 AR-1254-1

R.T.: 6.511 min
 Delta R.T.: -0.011 min
 Response: 2095788
 Conc: 33.18 ng/ml

Instrument :
 ECD_O
 ClientSampleId :
 30103

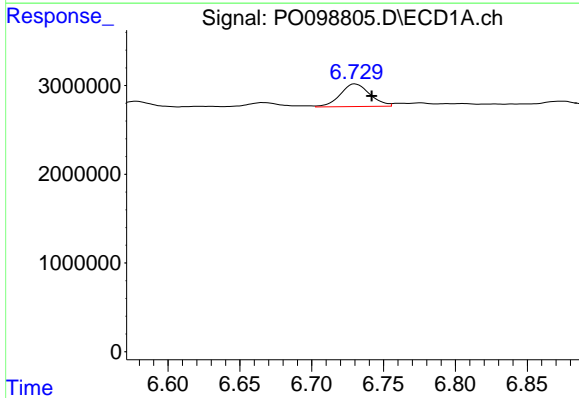
Manual Integrations
 APPROVED

Reviewed By :Yogesh Patel 10/16/2023
 Supervised By :Ankita Jodhani 10/17/2023



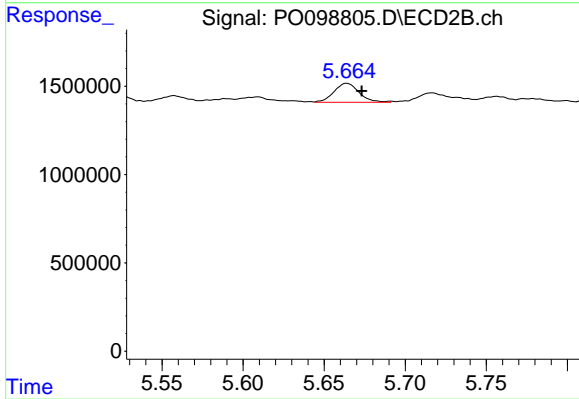
#26 AR-1254-1

R.T.: 5.516 min
 Delta R.T.: -0.009 min
 Response: 1450017
 Conc: 37.82 ng/ml m



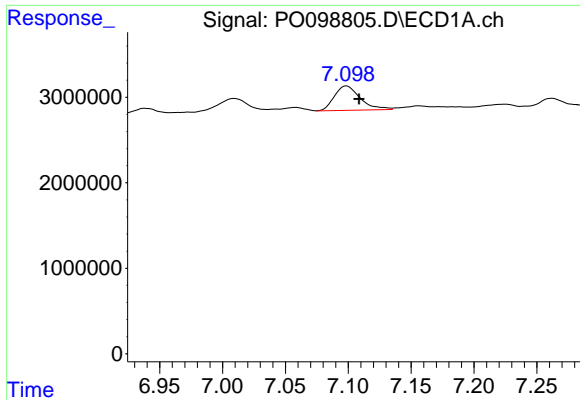
#27 AR-1254-2

R.T.: 6.730 min
 Delta R.T.: -0.012 min
 Response: 3686493
 Conc: 38.41 ng/ml



#27 AR-1254-2

R.T.: 5.664 min
 Delta R.T.: -0.010 min
 Response: 1153652
 Conc: 33.51 ng/ml m



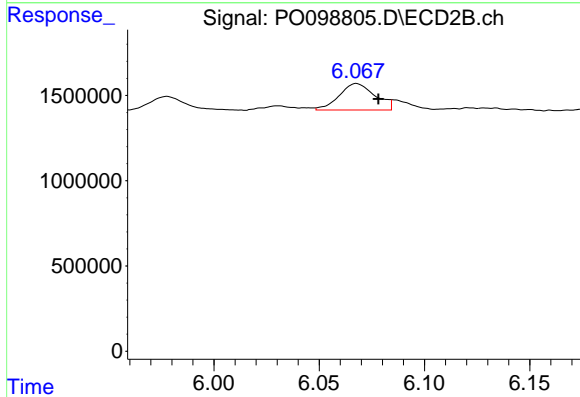
#28 AR-1254-3

R.T.: 7.099 min
 Delta R.T.: -0.010 min
 Response: 4110761
 Conc: 43.69 ng/ml

Instrument :
 ECD_O
 ClientSampleId :
 30103

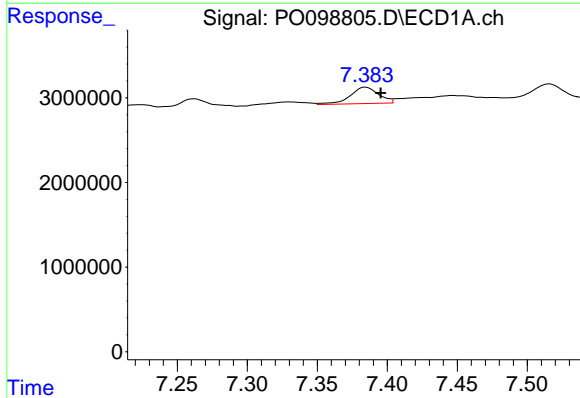
Manual Integrations
 APPROVED

Reviewed By :Yogesh Patel 10/16/2023
 Supervised By :Ankita Jodhani 10/17/2023



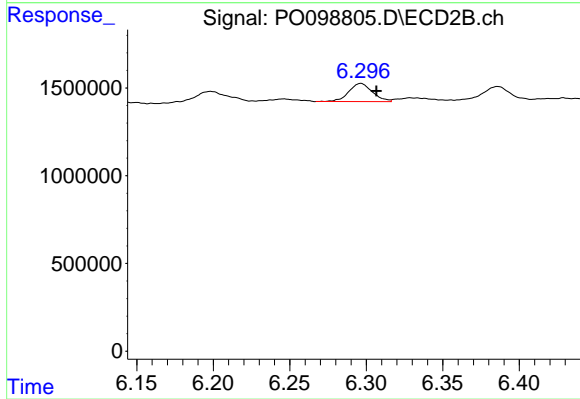
#28 AR-1254-3

R.T.: 6.067 min
 Delta R.T.: -0.011 min
 Response: 1858336
 Conc: 35.76 ng/ml m



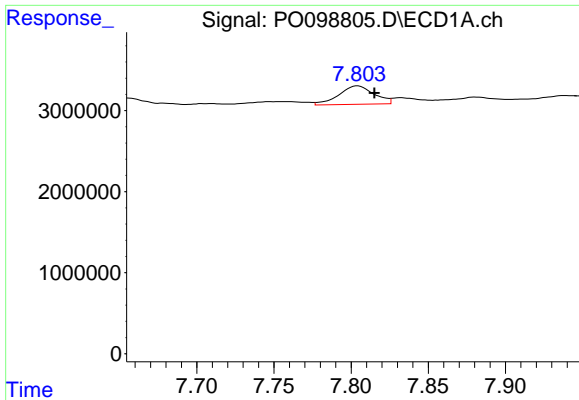
#29 AR-1254-4

R.T.: 7.384 min
 Delta R.T.: -0.011 min
 Response: 2748746
 Conc: 47.21 ng/ml



#29 AR-1254-4

R.T.: 6.296 min
 Delta R.T.: -0.010 min
 Response: 1115306
 Conc: 40.63 ng/ml m



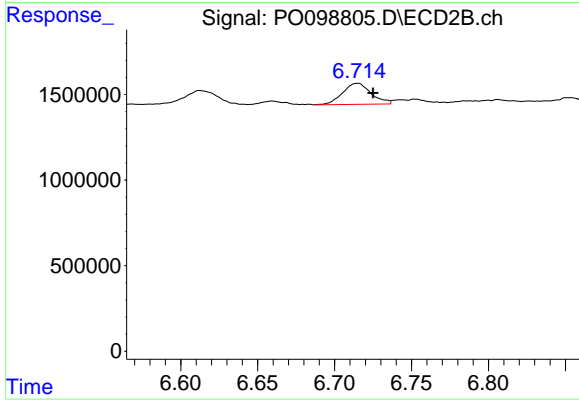
#30 AR-1254-5

R.T.: 7.804 min
 Delta R.T.: -0.011 min
 Response: 3611642
 Conc: 51.71 ng/ml

Instrument :
 ECD_O
 ClientSampleId :
 30103

Manual Integrations
 APPROVED

Reviewed By :Yogesh Patel 10/16/2023
 Supervised By :Ankita Jodhani 10/17/2023



#30 AR-1254-5

R.T.: 6.715 min
 Delta R.T.: -0.010 min
 Response: 1577804
 Conc: 36.42 ng/ml