

Data Path : Z:\pestpcbsrv\HPCHEM1\ECD_0\Data\PO101323\
 Data File : PO098808.D
 Signal(s) : Signal #1: ECD1A.ch Signal #2: ECD2B.ch
 Acq On : 13 Oct 2023 16:48
 Operator : YP/AJ
 Sample : AR1248CCC500
 Misc :
 ALS Vial : 5 Sample Multiplier: 1

Instrument :
 ECD_0
ClientSampleId :
 AR1248CCC500

Manual Integrations
APPROVED

Reviewed By :Yogesh Patel 10/16/2023
 Supervised By :Ankita Jodhani 10/17/2023

Integration File signal 1: autoint1.e
 Integration File signal 2: autoint2.e
 Quant Time: Oct 14 00:37:21 2023
 Quant Method : Z:\pestpcbsrv\HPCHEM1\ECD_0\methods\PO092723.M
 Quant Title : GC EXTRACTABLES
 QLast Update : Thu Sep 28 01:18:56 2023
 Response via : Initial Calibration
 Integrator: ChemStation

Volume Inj. : 2 µl
 Signal #1 Phase : ZB-MR1 Signal #2 Phase: ZB-MR2
 Signal #1 Info : 30Mx0.32mmx 0.50µ Signal #2 Info : 30M x 0.32mm x 0.25µm

Compound	RT#1	RT#2	Resp#1	Resp#2	ng/ml	ng/ml

System Monitoring Compounds						
1) SA Tetrachlo...	4.478	3.633	90616792	36884978	47.192	47.358
2) SA Decachlor...	10.288	8.636	61576779	25759497	50.728	48.080
Target Compounds						
21) L5 AR-1248-1	5.653	4.715	17481850	7669015	516.560	489.371
22) L5 AR-1248-2	5.927	4.951	26182701	10701737	505.566m	486.294
23) L5 AR-1248-3	6.133	4.993	27130389	11335799	480.072	482.790
24) L5 AR-1248-4	6.538	5.165	28963647	13200392	510.926	494.873
25) L5 AR-1248-5	6.577	5.558	29081452	12077685	491.674	511.838

(f)=RT Delta > 1/2 Window (#)=Amounts differ by > 25% (m)=manual int.

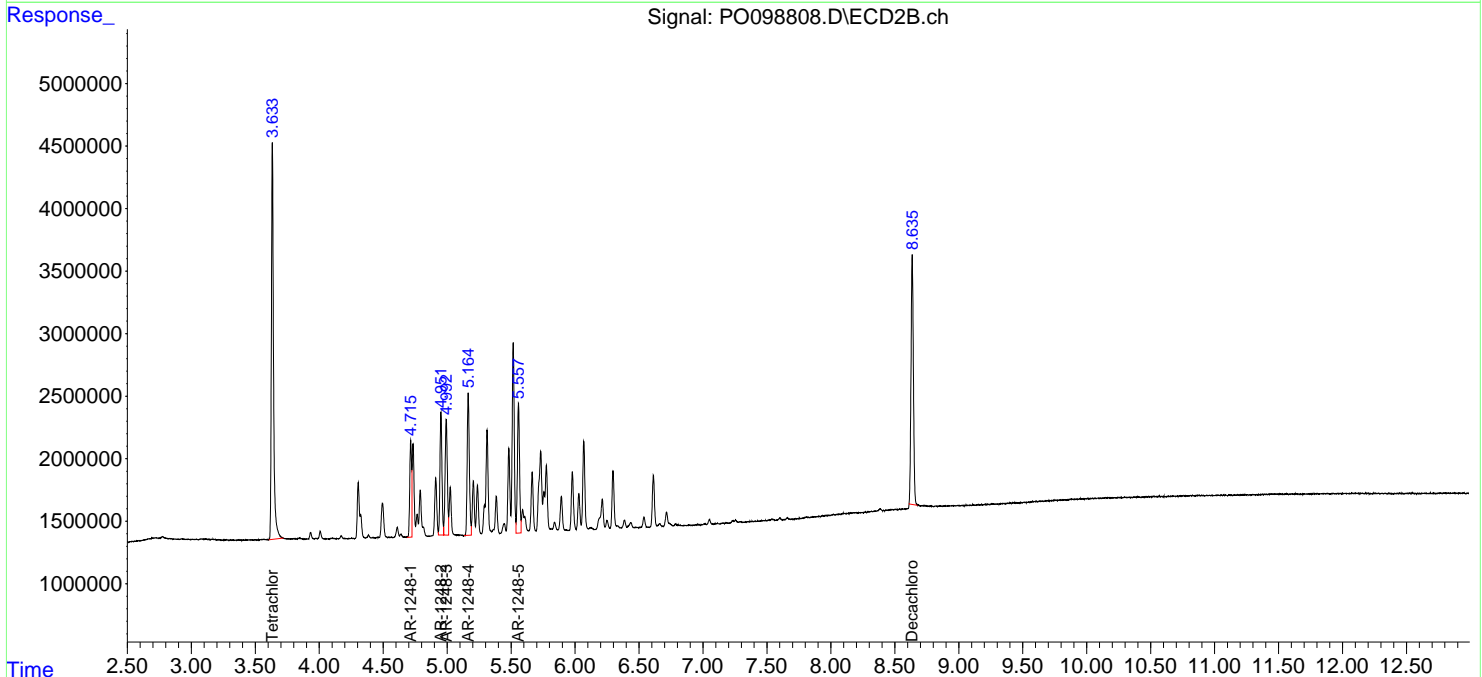
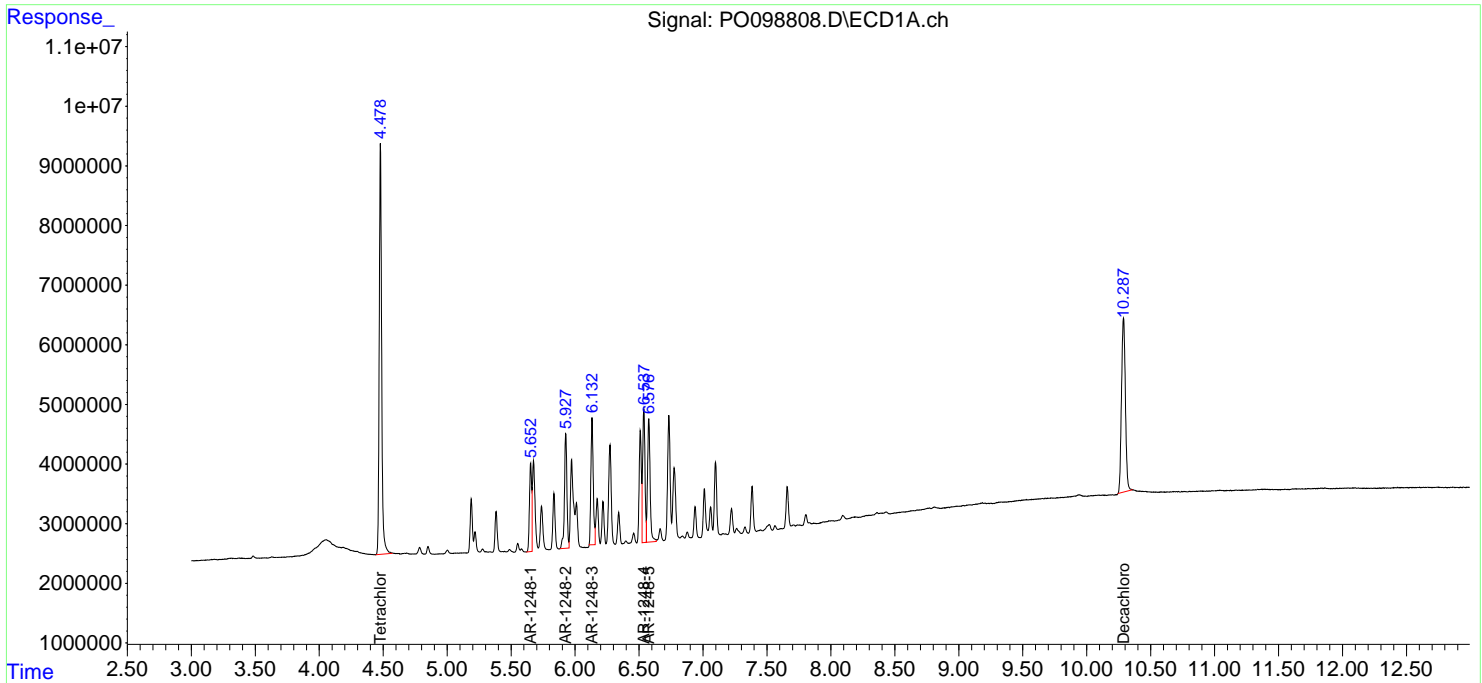
Data Path : Z:\pestpcbsrv\HPCHEM1\ECD_O\Data\PO101323\
 Data File : PO098808.D
 Signal(s) : Signal #1: ECD1A.ch Signal #2: ECD2B.ch
 Acq On : 13 Oct 2023 16:48
 Operator : YP/AJ
 Sample : AR1248CCC500
 Misc :
 ALS Vial : 5 Sample Multiplier: 1

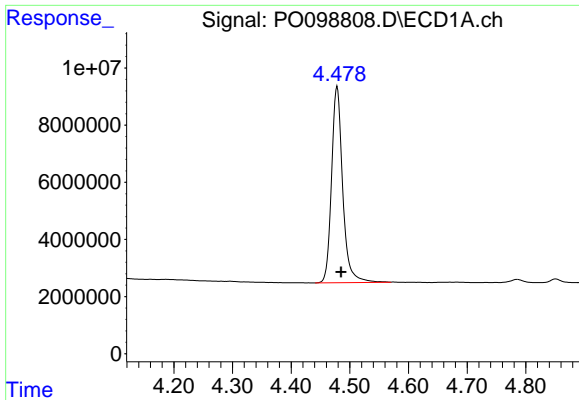
Instrument :
 ECD_O
ClientSampleId :
 AR1248CCC500

Manual Integrations
APPROVED
 Reviewed By :Yogesh Patel 10/16/2023
 Supervised By :Ankita Jodhani 10/17/2023

Integration File signal 1: autoint1.e
 Integration File signal 2: autoint2.e
 Quant Time: Oct 14 00:37:21 2023
 Quant Method : Z:\pestpcbsrv\HPCHEM1\ECD_O\methods\PO092723.M
 Quant Title : GC EXTRACTABLES
 QLast Update : Thu Sep 28 01:18:56 2023
 Response via : Initial Calibration
 Integrator: ChemStation

Volume Inj. : 2 µl
 Signal #1 Phase : ZB-MR1 Signal #2 Phase: ZB-MR2
 Signal #1 Info : 30Mx0.32mmx 0.50µ Signal #2 Info : 30M x 0.32mm x 0.25µm





#1 Tetrachloro-m-xylene

R.T.: 4.478 min
 Delta R.T.: -0.007 min
 Response: 90616792
 Conc: 47.19 ng/ml

Instrument :

ECD_O

ClientSampleId :

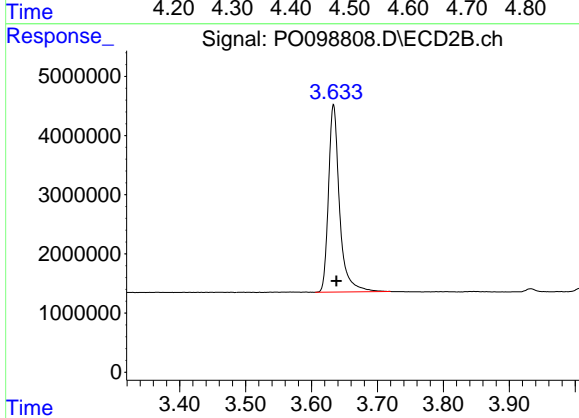
AR1248CCC500

Manual Integrations

APPROVED

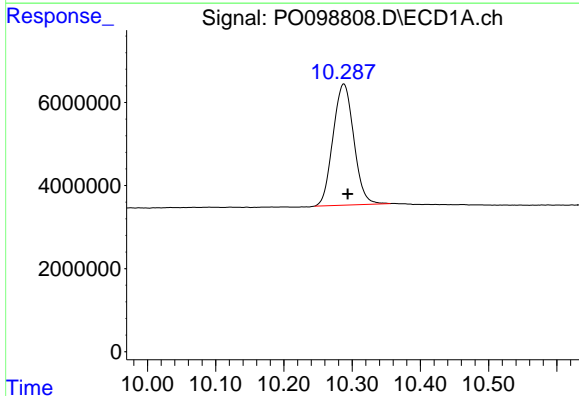
Reviewed By :Yogesh Patel 10/16/2023

Supervised By :Ankita Jodhani 10/17/2023



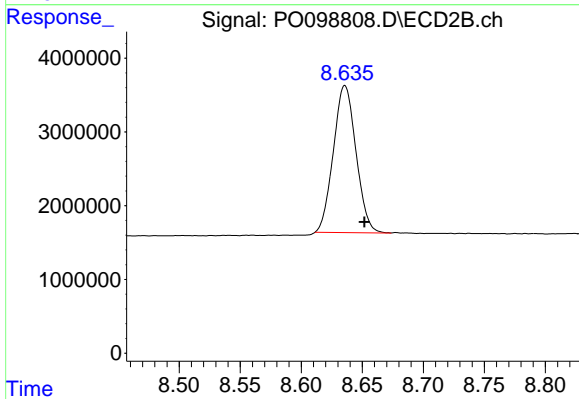
#1 Tetrachloro-m-xylene

R.T.: 3.633 min
 Delta R.T.: -0.004 min
 Response: 36884978
 Conc: 47.36 ng/ml



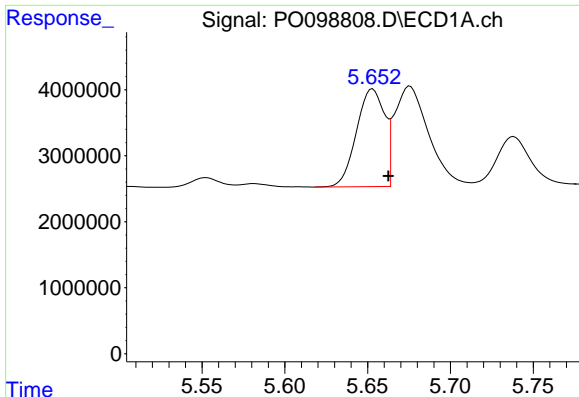
#2 Decachlorobiphenyl

R.T.: 10.288 min
 Delta R.T.: -0.006 min
 Response: 61576779
 Conc: 50.73 ng/ml



#2 Decachlorobiphenyl

R.T.: 8.636 min
 Delta R.T.: -0.016 min
 Response: 25759497
 Conc: 48.08 ng/ml



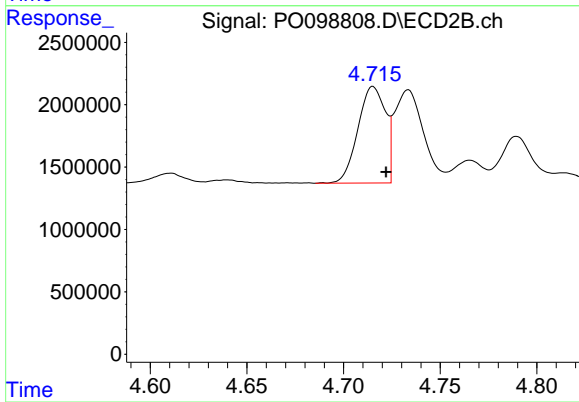
#21 AR-1248-1

R.T.: 5.653 min
 Delta R.T.: -0.010 min
 Response: 17481850
 Conc: 516.56 ng/ml

Instrument :
 ECD_O
 ClientSampleId :
 AR1248CCC500

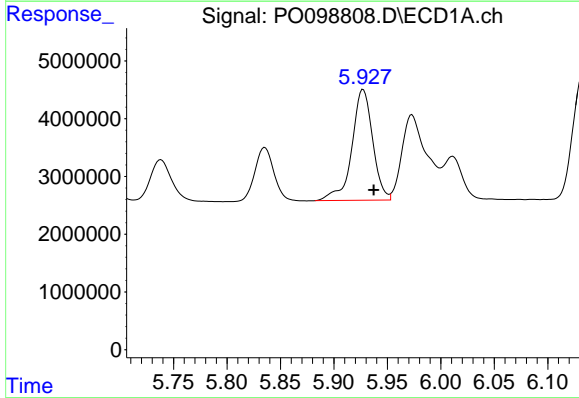
Manual Integrations
 APPROVED

Reviewed By :Yogesh Patel 10/16/2023
 Supervised By :Ankita Jodhani 10/17/2023



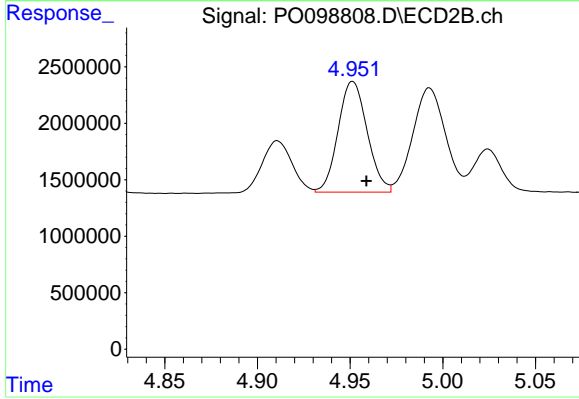
#21 AR-1248-1

R.T.: 4.715 min
 Delta R.T.: -0.007 min
 Response: 7669015
 Conc: 489.37 ng/ml



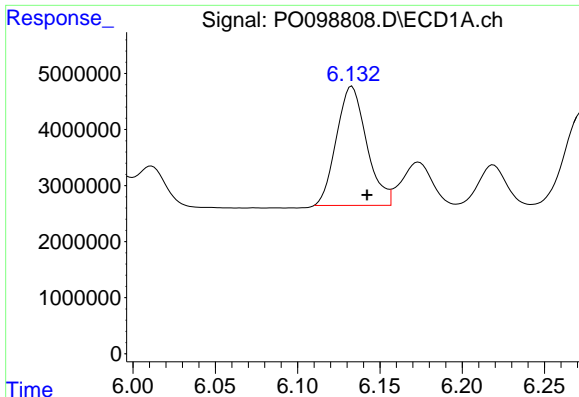
#22 AR-1248-2

R.T.: 5.927 min
 Delta R.T.: -0.011 min
 Response: 26182701
 Conc: 505.57 ng/ml m



#22 AR-1248-2

R.T.: 4.951 min
 Delta R.T.: -0.007 min
 Response: 10701737
 Conc: 486.29 ng/ml



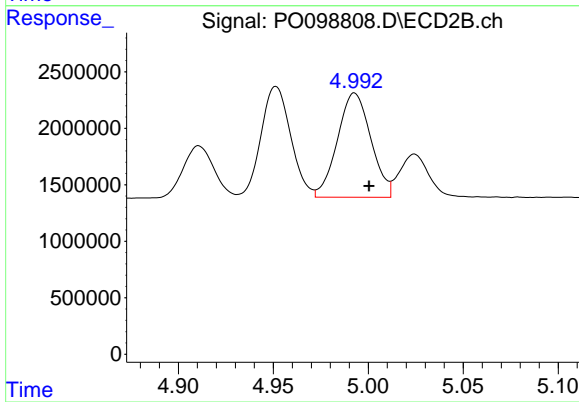
#23 AR-1248-3

R.T.: 6.133 min
 Delta R.T.: -0.009 min
 Response: 27130389
 Conc: 480.07 ng/ml

Instrument :
 ECD_O
 ClientSampleId :
 AR1248CCC500

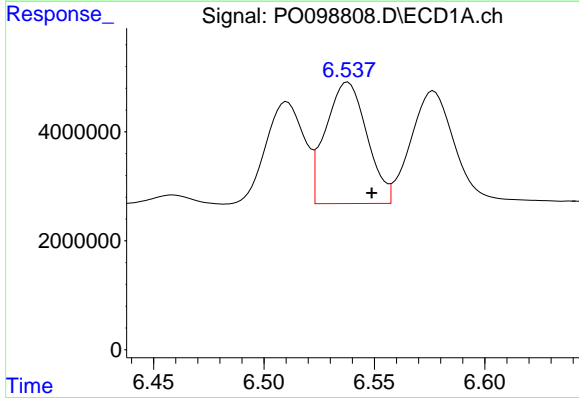
Manual Integrations
 APPROVED

Reviewed By :Yogesh Patel 10/16/2023
 Supervised By :Ankita Jodhani 10/17/2023



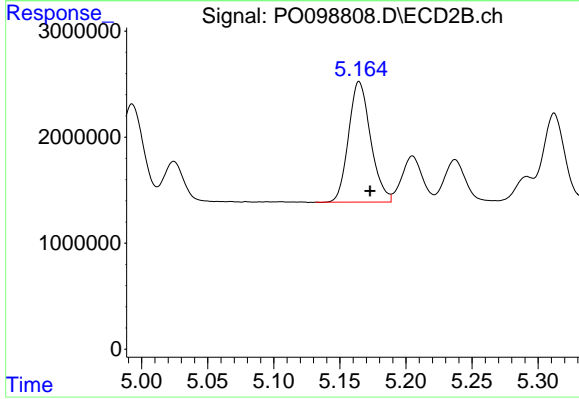
#23 AR-1248-3

R.T.: 4.993 min
 Delta R.T.: -0.008 min
 Response: 11335799
 Conc: 482.79 ng/ml



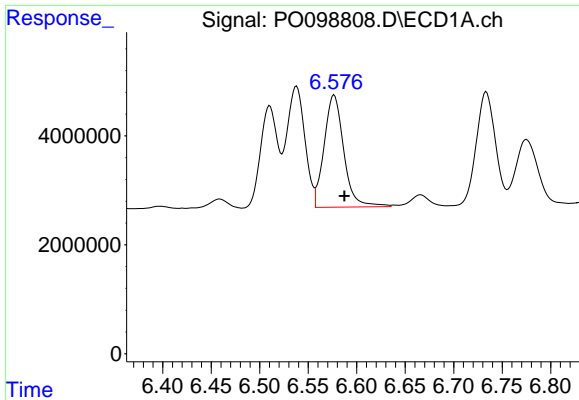
#24 AR-1248-4

R.T.: 6.538 min
 Delta R.T.: -0.011 min
 Response: 28963647
 Conc: 510.93 ng/ml



#24 AR-1248-4

R.T.: 5.165 min
 Delta R.T.: -0.008 min
 Response: 13200392
 Conc: 494.87 ng/ml



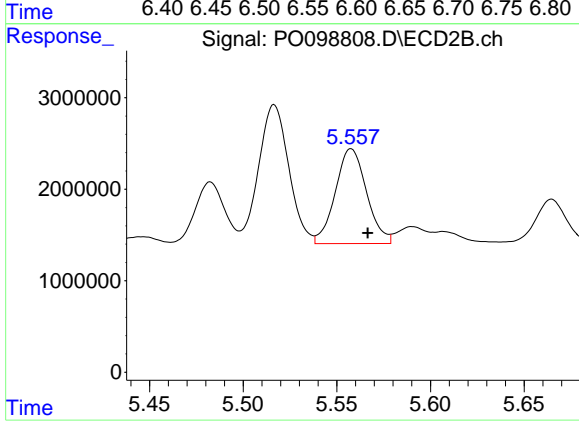
#25 AR-1248-5

R.T.: 6.577 min
 Delta R.T.: -0.010 min
 Response: 29081452
 Conc: 491.67 ng/ml

Instrument :
 ECD_O
 ClientSampleId :
 AR1248CCC500

Manual Integrations
 APPROVED

Reviewed By :Yogesh Patel 10/16/2023
 Supervised By :Ankita Jodhani 10/17/2023



#25 AR-1248-5

R.T.: 5.558 min
 Delta R.T.: -0.009 min
 Response: 12077685
 Conc: 511.84 ng/ml