

Data Path : Z:\pestpcbsrv\HPCHEM1\ECD\_0\Data\PO101420\  
 Data File : PO072342.D  
 Signal(s) : Signal #1: ECD1A.CH Signal #2: ECD2B.CH  
 Acq On : 14 Oct 2020 10:36  
 Operator : DD\AJ  
 Sample : AR1660ICC1000  
 Misc :  
 ALS Vial : 3 Sample Multiplier: 1

Instrument :  
 ECD\_0  
 ClientSampleId :  
 AR1660ICC1000

Integration File signal 1: autoint1.e  
 Integration File signal 2: autoint2.e  
 Quant Time: Oct 14 12:08:30 2020  
 Quant Method : Z:\pestpcbsrv\HPCHEM1\ECD\_0\methods\PO101420.M  
 Quant Title : GC EXTRACTABLES  
 QLast Update : Wed Oct 14 12:07:39 2020  
 Response via : Initial Calibration  
 Integrator: ChemStation 6890 Scale Mode: Small noise peaks clipped

Volume Inj. : 2 µl  
 Signal #1 Phase : ZB-MR2 Signal #2 Phase: ZB-MR2  
 Signal #1 Info : 30Mx0.32mmx 0.50µ Signal #2 Info : 30M x 0.32mm x 0.25µm

Compound	RT#1	RT#2	Resp#1	Resp#2	ng/ml	ng/ml
-----						
System Monitoring Compounds						
1) SA Tetrachlo...	4.322	3.506	8146729	3952477	94.516	94.637
2) SA Decachlor...	9.929	8.676	9989491	4675993	93.383	94.437
Target Compounds						
3) L1 AR-1016-1	5.626	4.726	2969037	1490794	901.187	889.654
4) L1 AR-1016-2	5.647	4.744	4325489	2165006	911.396	901.924
5) L1 AR-1016-3	5.711	4.928	2471275	1071140	894.382	887.572
6) L1 AR-1016-4	5.816	4.986	2131368	917799	899.892	866.905
7) L1 AR-1016-5	6.125	5.206	1897196	1134561	923.332	882.308
31) L7 AR-1260-1	7.281	6.284	4430780	2215762	900.647	902.605
32) L7 AR-1260-2	7.548	6.485	7029983	2809132	928.244	907.257
33) L7 AR-1260-3	7.906	6.631	5965143	2589926	933.769	907.318
34) L7 AR-1260-4	8.132	7.106	5580887	2266764	925.380	911.139
35) L7 AR-1260-5	8.448	7.359	13676357	5851014	952.226	935.109

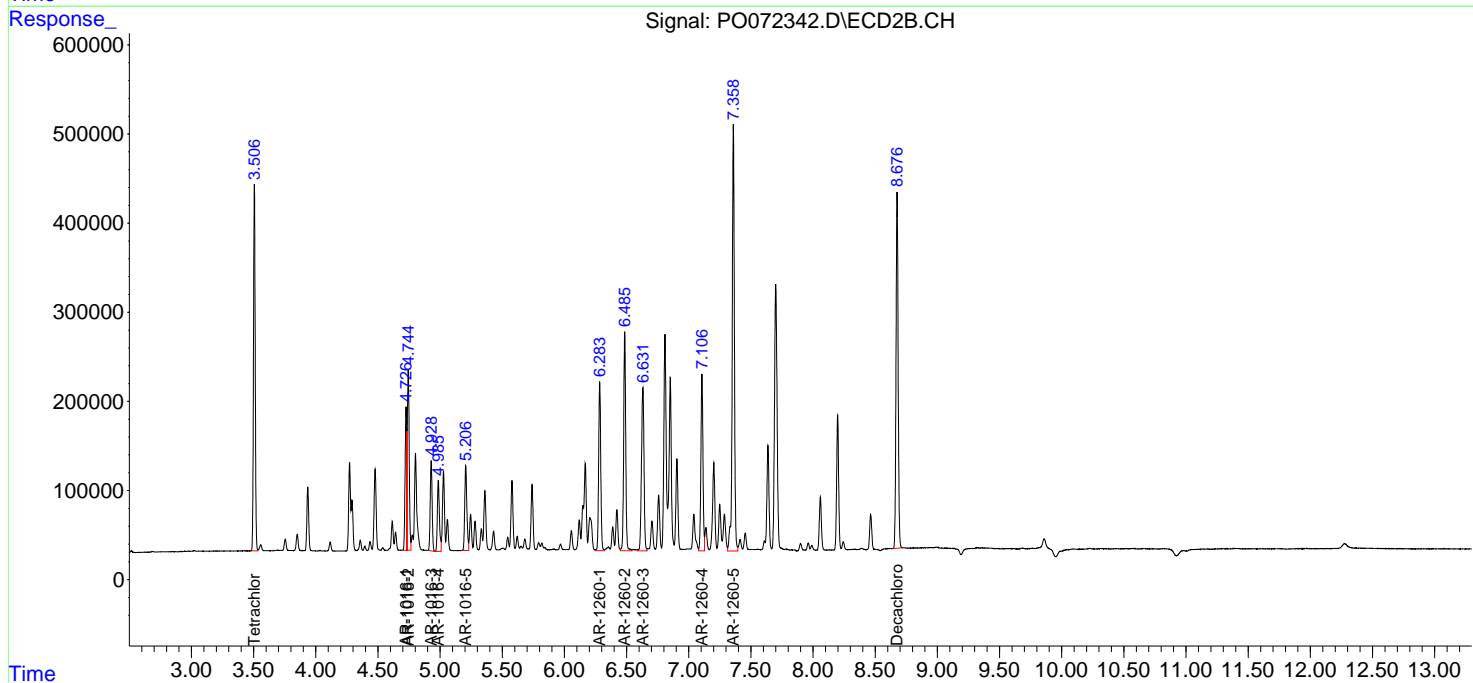
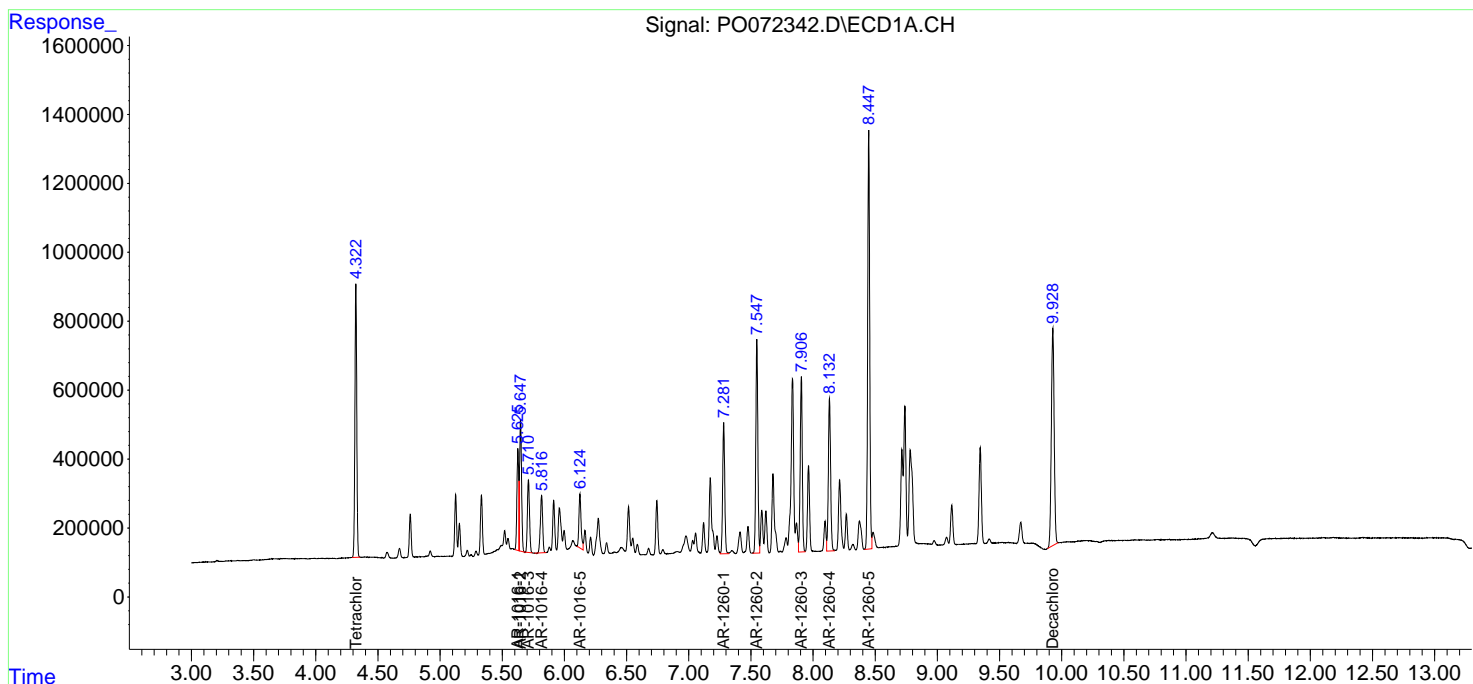
(f)=RT Delta > 1/2 Window (#)=Amounts differ by > 25% (m)=manual int.

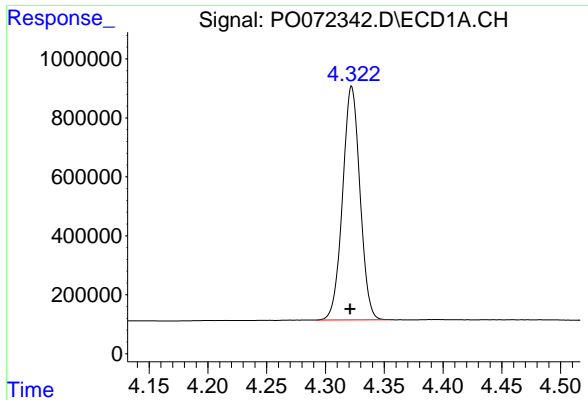
Data Path : Z:\pestpcbsrv\HPCHEM1\ECD\_O\Data\PO101420\  
 Data File : PO072342.D  
 Signal(s) : Signal #1: ECD1A.CH Signal #2: ECD2B.CH  
 Acq On : 14 Oct 2020 10:36  
 Operator : DD\AJ  
 Sample : AR1660ICC1000  
 Misc :  
 ALS Vial : 3 Sample Multiplier: 1

Instrument :  
 ECD\_O  
 ClientSampleID :  
 AR1660ICC1000

Integration File signal 1: autoint1.e  
 Integration File signal 2: autoint2.e  
 Quant Time: Oct 14 12:08:30 2020  
 Quant Method : Z:\pestpcbsrv\HPCHEM1\ECD\_O\methods\PO101420.M  
 Quant Title : GC EXTRACTABLES  
 QLast Update : Wed Oct 14 12:07:39 2020  
 Response via : Initial Calibration  
 Integrator: ChemStation 6890 Scale Mode: Small noise peaks clipped

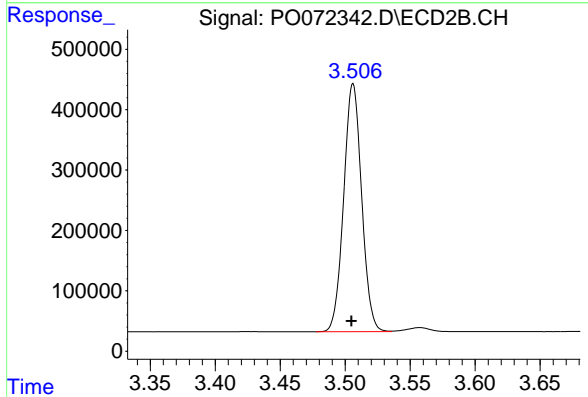
Volume Inj. : 2 µl  
 Signal #1 Phase : ZB-MR1 Signal #2 Phase: ZB-MR2  
 Signal #1 Info : 30Mx0.32mmx 0.50µ Signal #2 Info : 30M x 0.32mm x 0.25µm



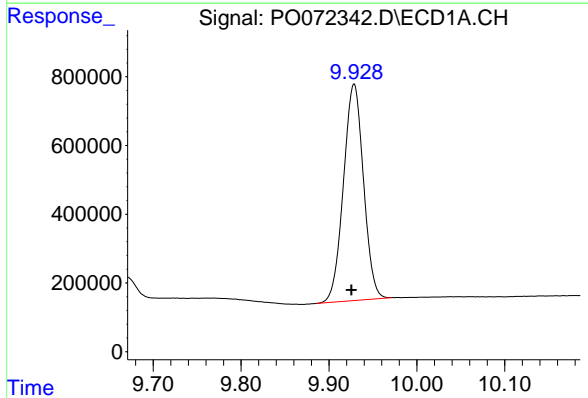


#1 Tetrachloro-m-xylene  
 R.T.: 4.322 min  
 Delta R.T.: 0.001 min  
 Response: 8146729  
 Conc: 94.52 ng/ml

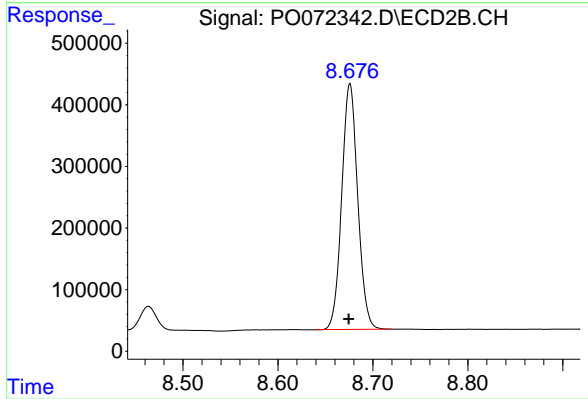
Instrument :  
 ECD\_O  
 ClientSampleId :  
 AR1660ICC1000



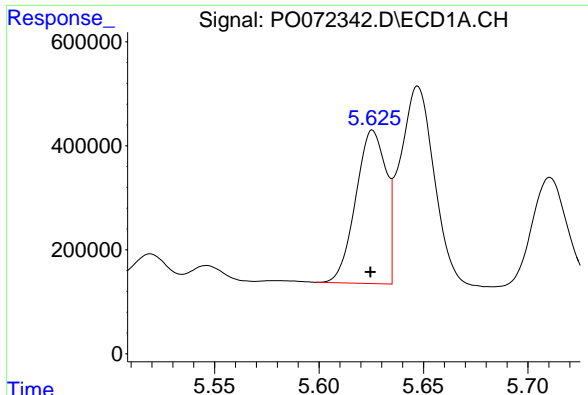
#1 Tetrachloro-m-xylene  
 R.T.: 3.506 min  
 Delta R.T.: 0.001 min  
 Response: 3952477  
 Conc: 94.64 ng/ml



#2 Decachlorobiphenyl  
 R.T.: 9.929 min  
 Delta R.T.: 0.003 min  
 Response: 9989491  
 Conc: 93.38 ng/ml



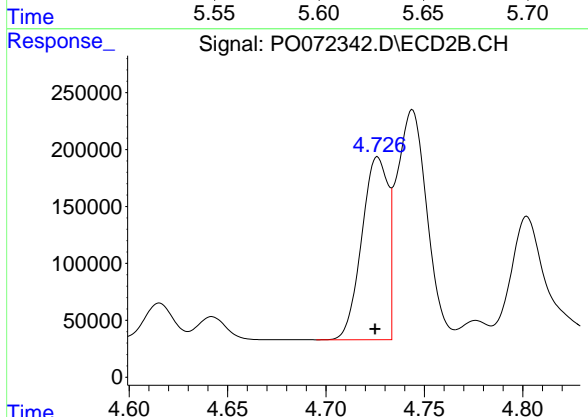
#2 Decachlorobiphenyl  
 R.T.: 8.676 min  
 Delta R.T.: 0.001 min  
 Response: 4675993  
 Conc: 94.44 ng/ml



#3 AR-1016-1

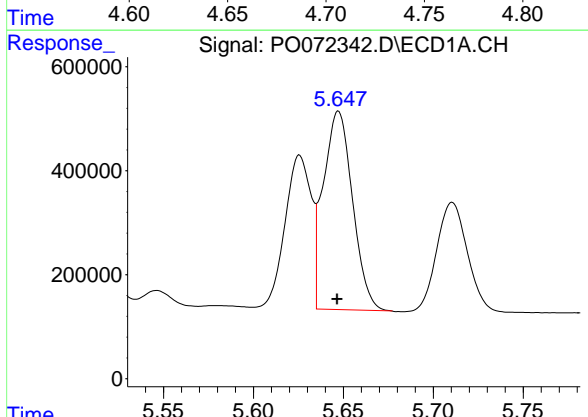
R.T.: 5.626 min  
 Delta R.T.: 0.001 min  
 Response: 2969037  
 Conc: 901.19 ng/ml

Instrument :  
 ECD\_O  
 ClientSampled :  
 AR1660ICC1000



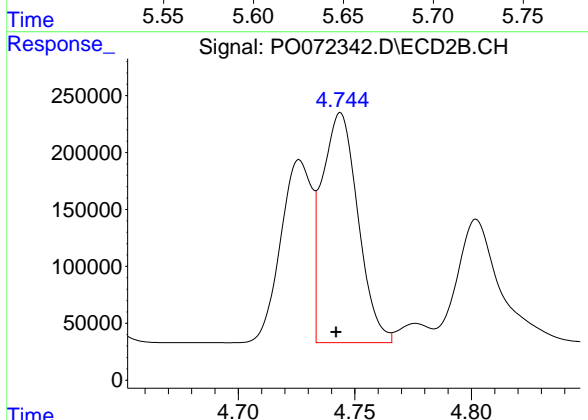
#3 AR-1016-1

R.T.: 4.726 min  
 Delta R.T.: 0.001 min  
 Response: 1490794  
 Conc: 889.65 ng/ml



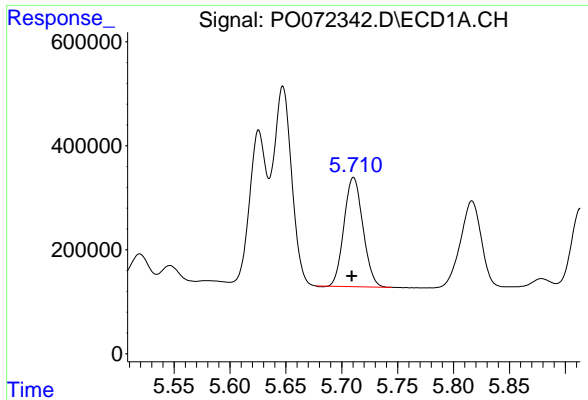
#4 AR-1016-2

R.T.: 5.647 min  
 Delta R.T.: 0.000 min  
 Response: 4325489  
 Conc: 911.40 ng/ml



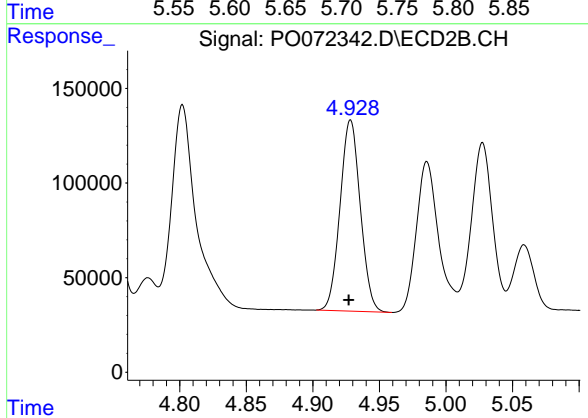
#4 AR-1016-2

R.T.: 4.744 min  
 Delta R.T.: 0.002 min  
 Response: 2165006  
 Conc: 901.92 ng/ml

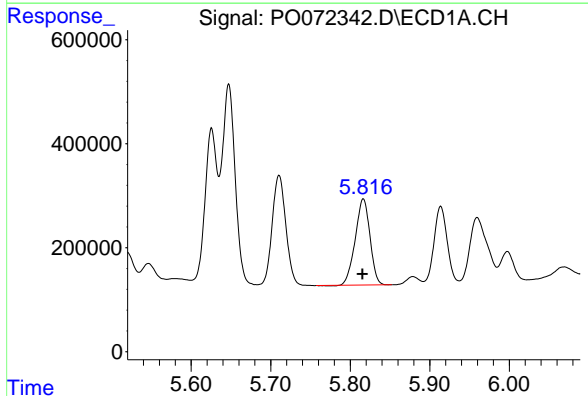


#5 AR-1016-3  
R.T.: 5.711 min  
Delta R.T.: 0.002 min  
Response: 2471275  
Conc: 894.38 ng/ml

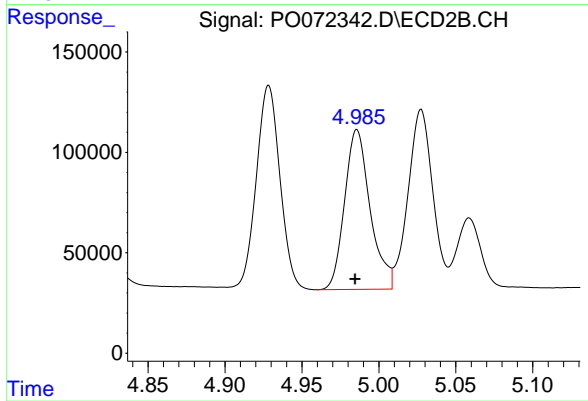
Instrument :  
ECD\_O  
ClientSampleId :  
AR1660ICC1000



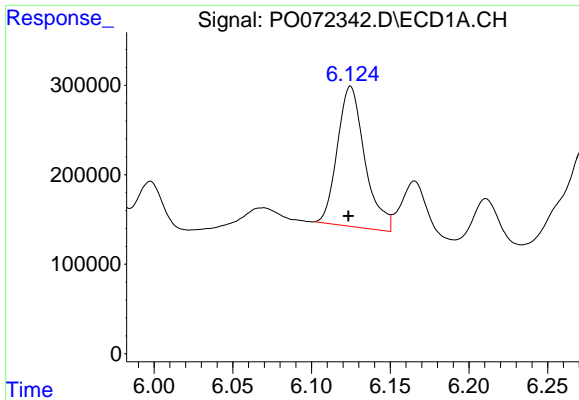
#5 AR-1016-3  
R.T.: 4.928 min  
Delta R.T.: 0.001 min  
Response: 1071140  
Conc: 887.57 ng/ml



#6 AR-1016-4  
R.T.: 5.816 min  
Delta R.T.: 0.000 min  
Response: 2131368  
Conc: 899.89 ng/ml



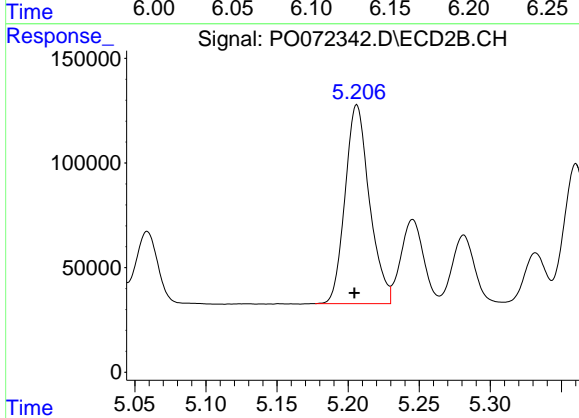
#6 AR-1016-4  
R.T.: 4.986 min  
Delta R.T.: 0.001 min  
Response: 917799  
Conc: 866.90 ng/ml



#7 AR-1016-5

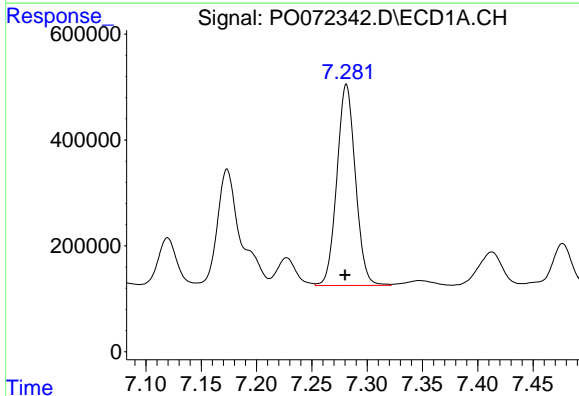
R.T.: 6.125 min  
 Delta R.T.: 0.001 min  
 Response: 1897196  
 Conc: 923.33 ng/ml

**Instrument :**  
 ECD\_O  
**ClientSampleId :**  
 AR1660ICC1000



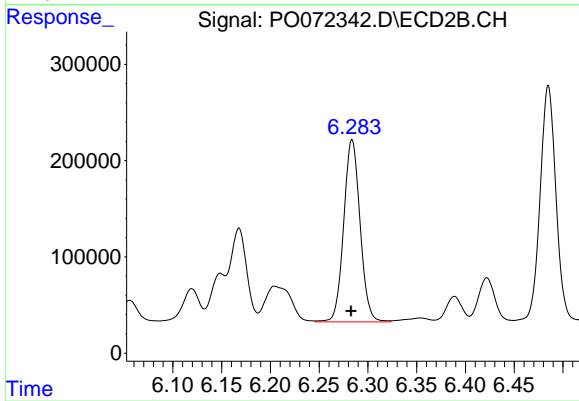
#7 AR-1016-5

R.T.: 5.206 min  
 Delta R.T.: 0.002 min  
 Response: 1134561  
 Conc: 882.31 ng/ml



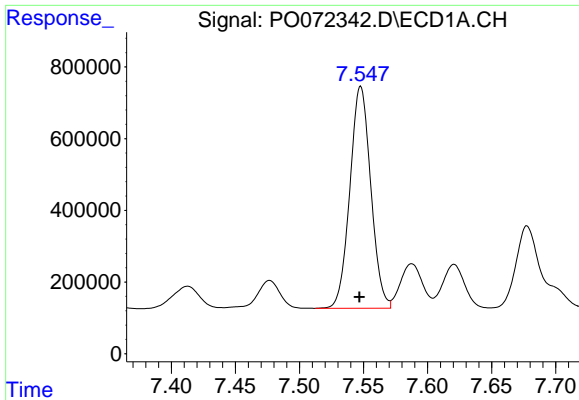
#31 AR-1260-1

R.T.: 7.281 min  
 Delta R.T.: 0.001 min  
 Response: 4430780  
 Conc: 900.65 ng/ml



#31 AR-1260-1

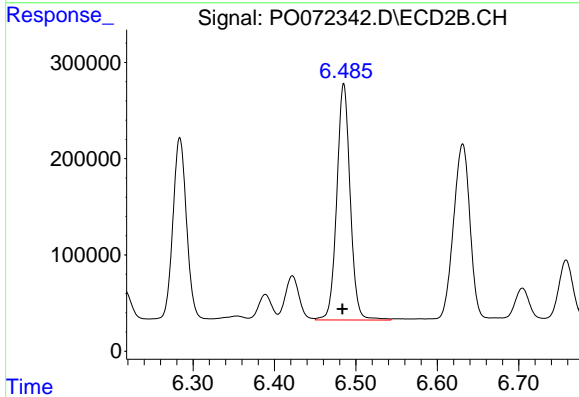
R.T.: 6.284 min  
 Delta R.T.: 0.001 min  
 Response: 2215762  
 Conc: 902.61 ng/ml



#32 AR-1260-2

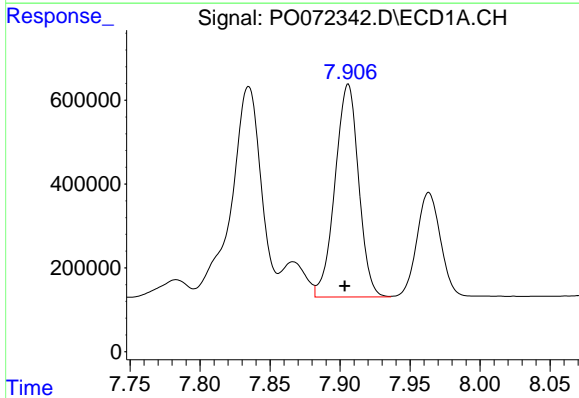
R.T.: 7.548 min  
Delta R.T.: 0.001 min  
Response: 7029983  
Conc: 928.24 ng/ml

Instrument :  
ECD\_O  
ClientSampleId :  
AR1660ICC1000



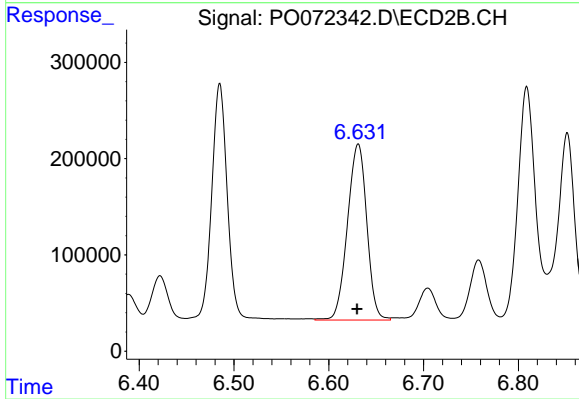
#32 AR-1260-2

R.T.: 6.485 min  
Delta R.T.: 0.002 min  
Response: 2809132  
Conc: 907.26 ng/ml



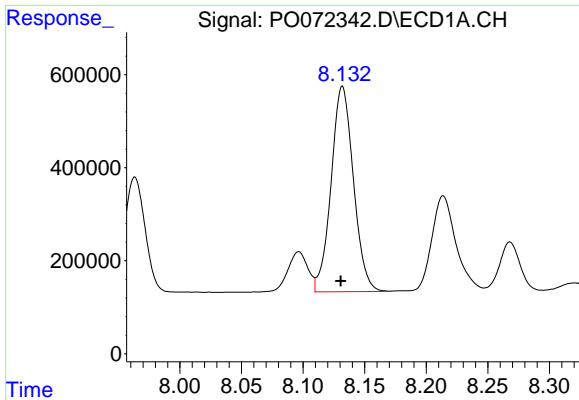
#33 AR-1260-3

R.T.: 7.906 min  
Delta R.T.: 0.002 min  
Response: 5965143  
Conc: 933.77 ng/ml



#33 AR-1260-3

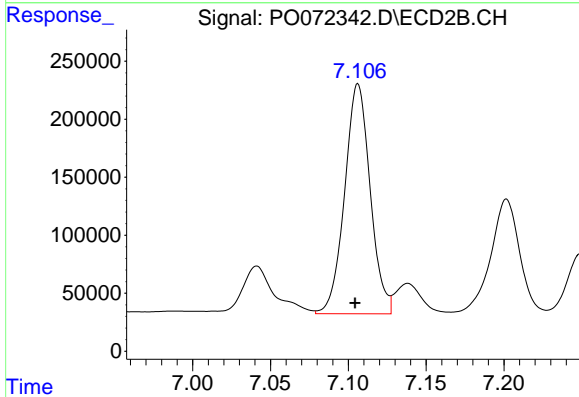
R.T.: 6.631 min  
Delta R.T.: 0.001 min  
Response: 2589926  
Conc: 907.32 ng/ml



#34 AR-1260-4

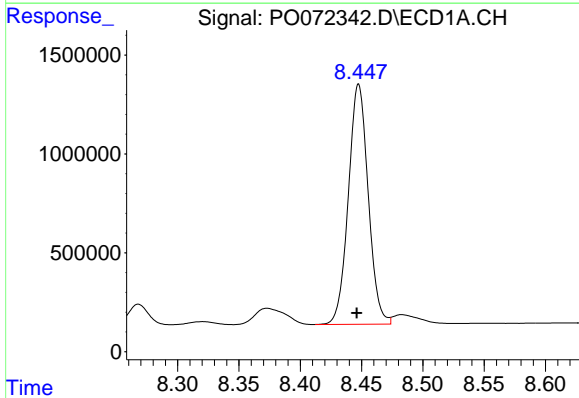
R.T.: 8.132 min  
 Delta R.T.: 0.001 min  
 Response: 5580887  
 Conc: 925.38 ng/ml

Instrument :  
 ECD\_O  
 ClientSampleId :  
 AR1660ICC1000



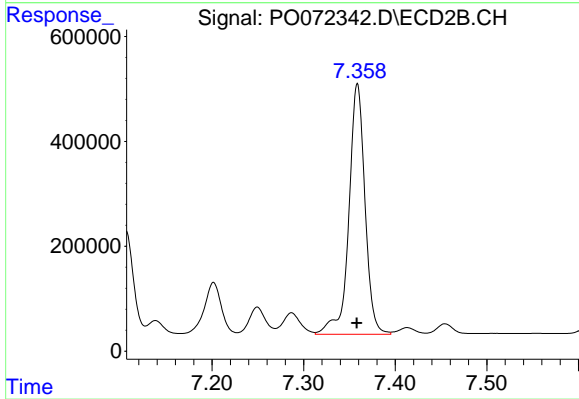
#34 AR-1260-4

R.T.: 7.106 min  
 Delta R.T.: 0.002 min  
 Response: 2266764  
 Conc: 911.14 ng/ml



#35 AR-1260-5

R.T.: 8.448 min  
 Delta R.T.: 0.002 min  
 Response: 13676357  
 Conc: 952.23 ng/ml



#35 AR-1260-5

R.T.: 7.359 min  
 Delta R.T.: 0.000 min  
 Response: 5851014  
 Conc: 935.11 ng/ml