

Data Path : Z:\pestpcbsrv\HPCHEM1\ECD_0\Data\PO101420\
 Data File : PO072353.D
 Signal(s) : Signal #1: ECD1A.CH Signal #2: ECD2B.CH
 Acq On : 14 Oct 2020 13:44
 Operator : DD\AJ
 Sample : AR1242IC050
 Misc :
 ALS Vial : 14 Sample Multiplier: 1

Instrument :
 ECD_0
 ClientSampleId :
 AR1242IC050

Integration File signal 1: autoint1.e
 Integration File signal 2: autoint2.e
 Quant Time: Oct 14 14:02:42 2020
 Quant Method : Z:\pestpcbsrv\HPCHEM1\ECD_0\methods\PO101420.M
 Quant Title : GC EXTRACTABLES
 QLast Update : Wed Oct 14 14:01:01 2020
 Response via : Initial Calibration
 Integrator: ChemStation 6890 Scale Mode: Small noise peaks clipped

Volume Inj. : 2 µl
 Signal #1 Phase : ZB-MR1 Signal #2 Phase: ZB-MR2
 Signal #1 Info : 30Mx0.32mmx 0.50µ Signal #2 Info : 30M x 0.32mm x 0.25µm

Compound	RT#1	RT#2	Resp#1	Resp#2	ng/ml	ng/ml

System Monitoring Compounds						
1) SA Tetrachlo...	4.321	3.504	409280	217311	5.029	5.498
2) SA Decachlor...	9.926	8.674	628869	300316	6.134	6.186
Target Compounds						
16) L4 AR-1242-1	5.625	4.725	126053	74749	51.982	59.480
17) L4 AR-1242-2	5.646	4.742	174844	104198	49.416	58.916
18) L4 AR-1242-3	5.708	4.927	106228	52756	51.143	57.310
19) L4 AR-1242-4	5.816	5.026	83339	50972	47.863	59.116
20) L4 AR-1242-5	6.585	5.579	131920	82092	58.465	63.914

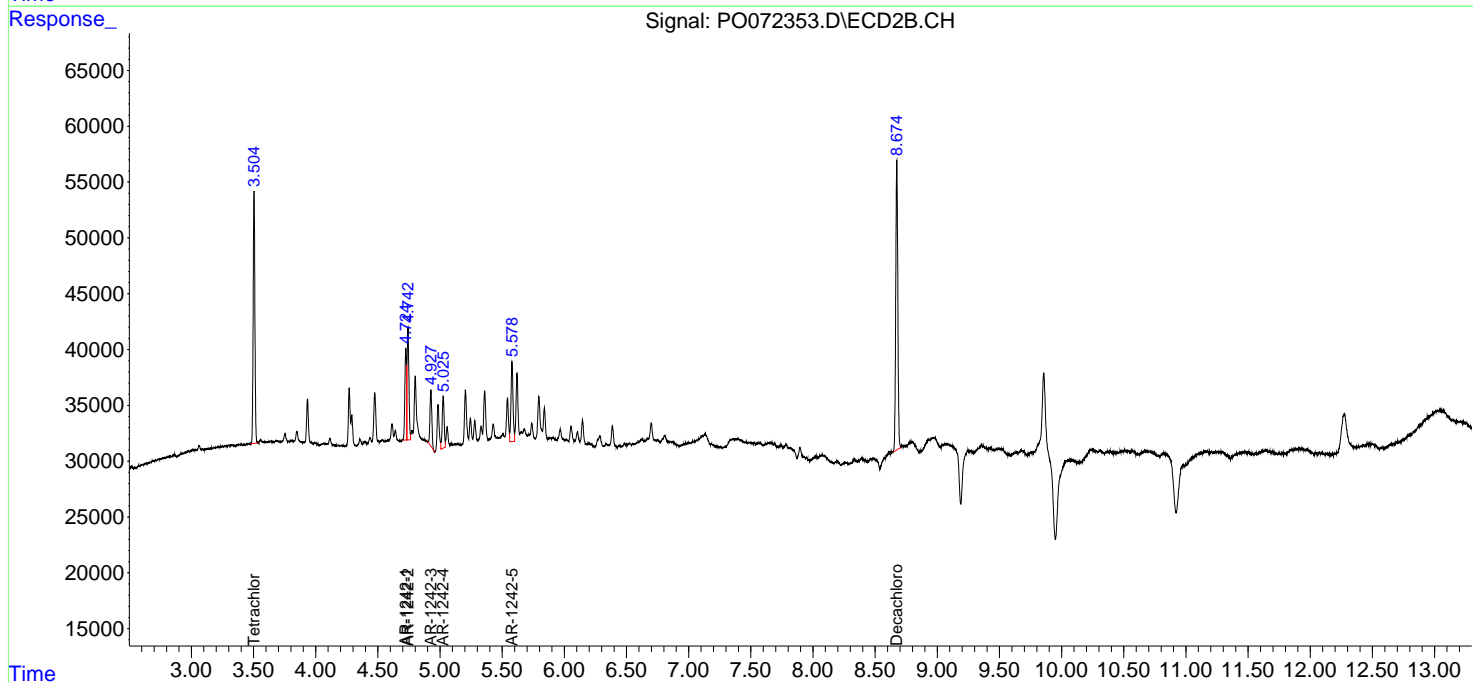
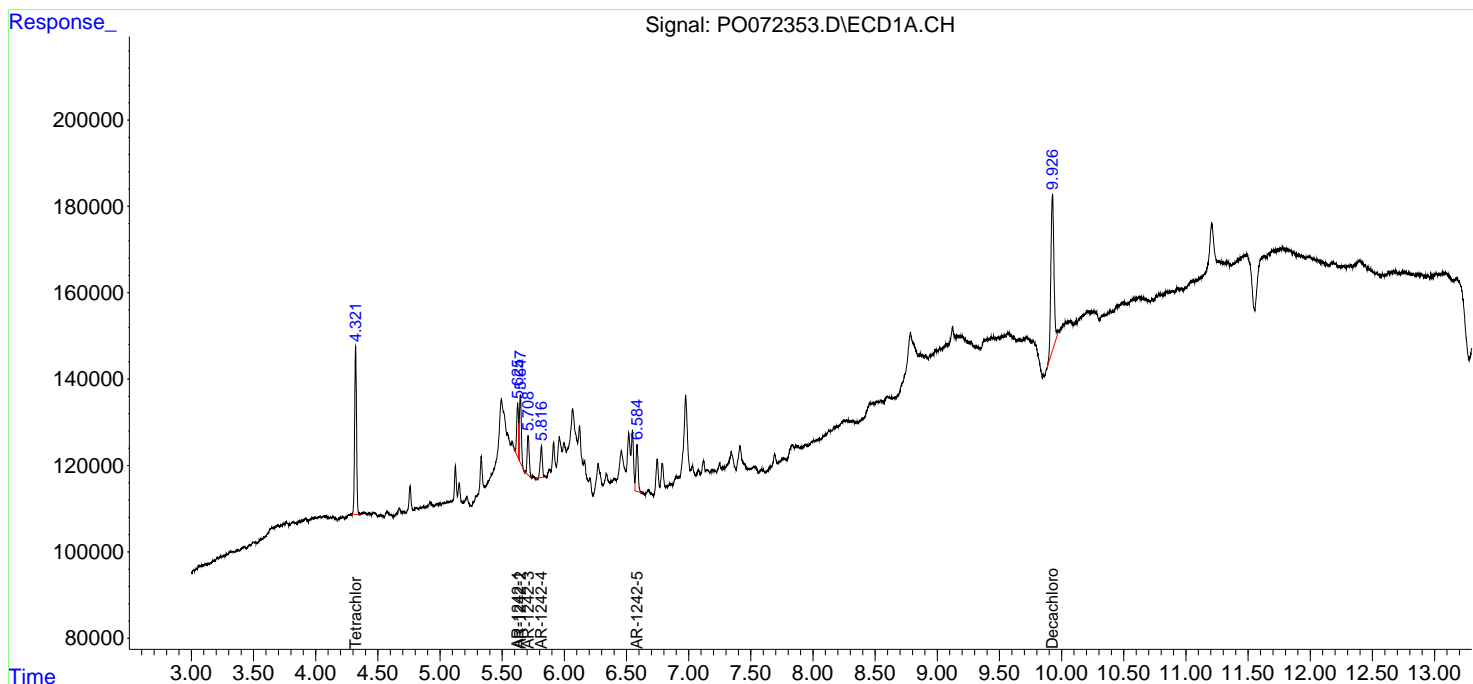
(f)=RT Delta > 1/2 Window (#)=Amounts differ by > 25% (m)=manual int.

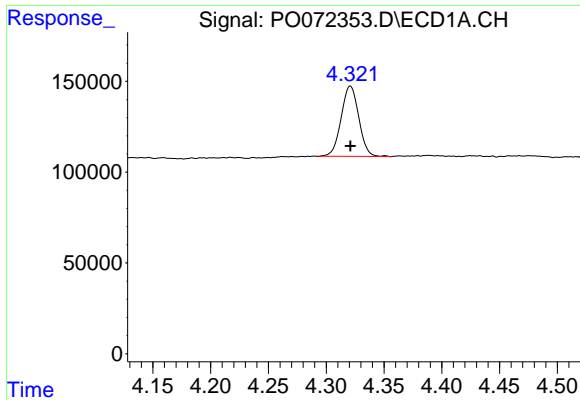
Data Path : Z:\pestpcbsrv\HPCHEM1\ECD_O\Data\PO101420\
 Data File : PO072353.D
 Signal(s) : Signal #1: ECD1A.CH Signal #2: ECD2B.CH
 Acq On : 14 Oct 2020 13:44
 Operator : DD\AJ
 Sample : AR1242ICC050
 Misc :
 ALS Vial : 14 Sample Multiplier: 1

Instrument :
 ECD_O
 Client Sampled :
 AR1242ICC050

Integration File signal 1: autoint1.e
 Integration File signal 2: autoint2.e
 Quant Time: Oct 14 14:02:42 2020
 Quant Method : Z:\pestpcbsrv\HPCHEM1\ECD_O\methods\PO101420.M
 Quant Title : GC EXTRACTABLES
 QLast Update : Wed Oct 14 14:01:01 2020
 Response via : Initial Calibration
 Integrator: ChemStation 6890 Scale Mode: Small noise peaks clipped

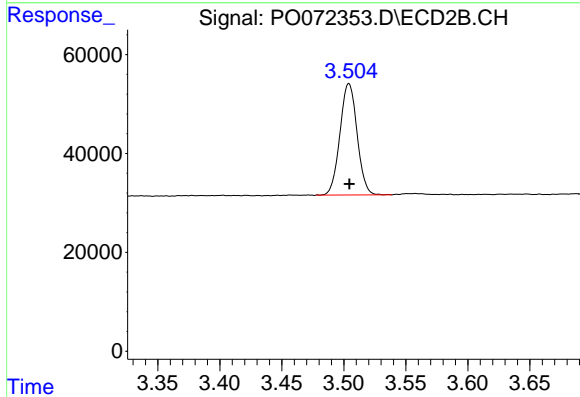
Volume Inj. : 2 µl
 Signal #1 Phase : ZB-MR1 Signal #2 Phase: ZB-MR2
 Signal #1 Info : 30Mx0.32mmx 0.50µ Signal #2 Info : 30M x 0.32mm x 0.25µm



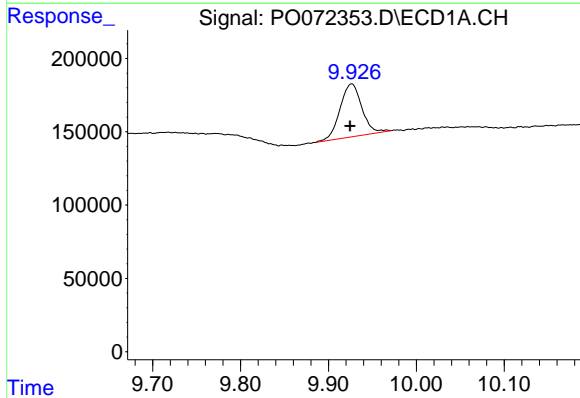


#1 Tetrachloro-m-xylene
 R.T.: 4.321 min
 Delta R.T.: 0.000 min
 Response: 409280
 Conc: 5.03 ng/ml

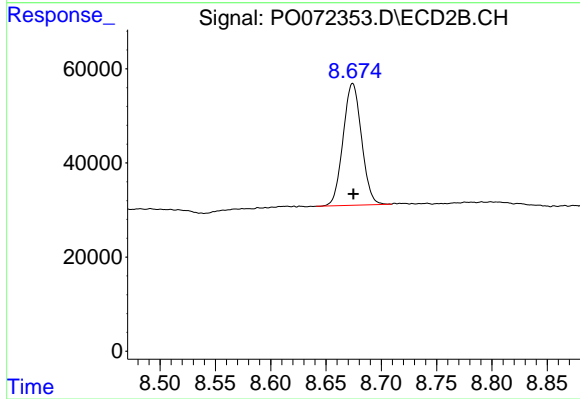
Instrument :
 ECD_O
 ClientSampleId :
 AR1242ICC050



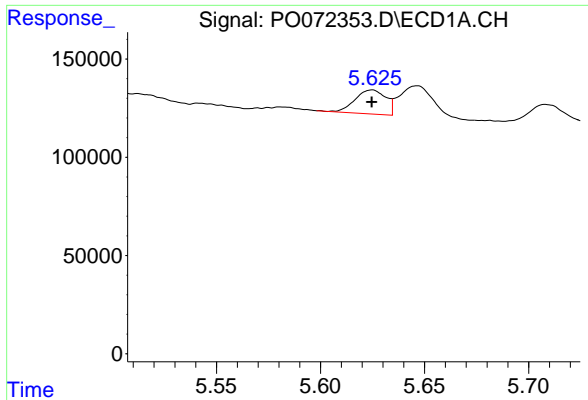
#1 Tetrachloro-m-xylene
 R.T.: 3.504 min
 Delta R.T.: 0.000 min
 Response: 217311
 Conc: 5.50 ng/ml



#2 Decachlorobiphenyl
 R.T.: 9.926 min
 Delta R.T.: 0.002 min
 Response: 628869
 Conc: 6.13 ng/ml

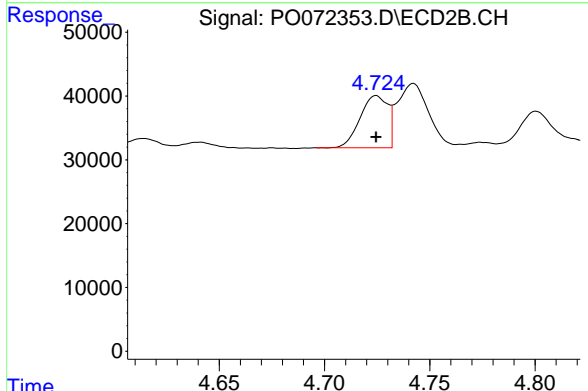


#2 Decachlorobiphenyl
 R.T.: 8.674 min
 Delta R.T.: 0.000 min
 Response: 300316
 Conc: 6.19 ng/ml

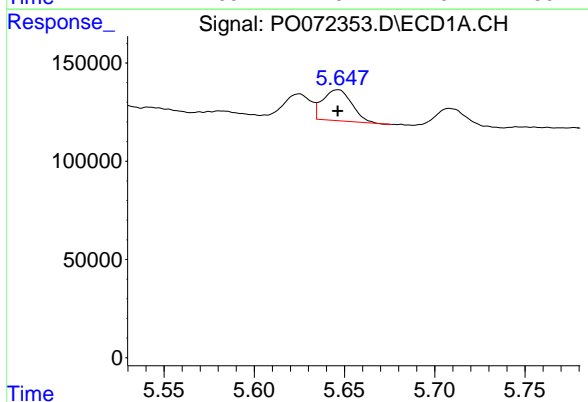


#16 AR-1242-1
 R.T.: 5.625 min
 Delta R.T.: 0.000 min
 Response: 126053
 Conc: 51.98 ng/ml

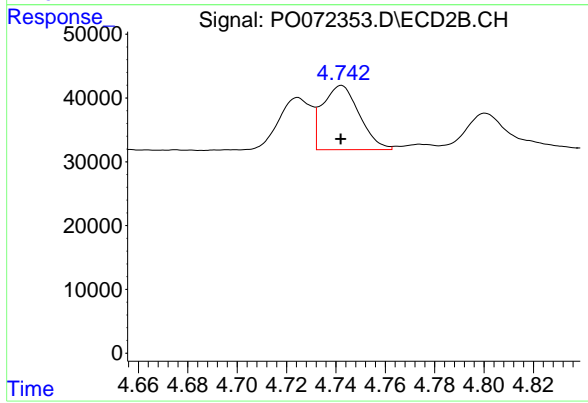
Instrument :
 ECD_O
ClientSampleId :
 AR1242ICC050



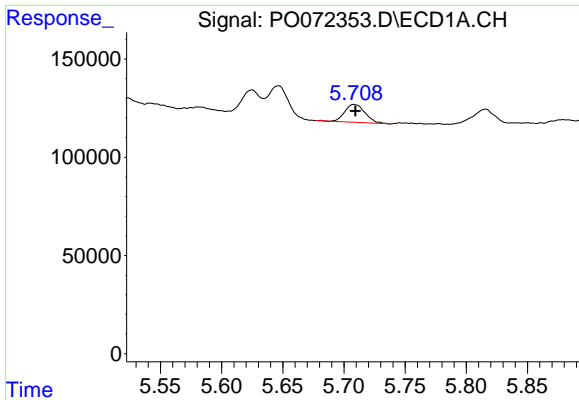
#16 AR-1242-1
 R.T.: 4.725 min
 Delta R.T.: 0.000 min
 Response: 74749
 Conc: 59.48 ng/ml



#17 AR-1242-2
 R.T.: 5.646 min
 Delta R.T.: 0.000 min
 Response: 174844
 Conc: 49.42 ng/ml

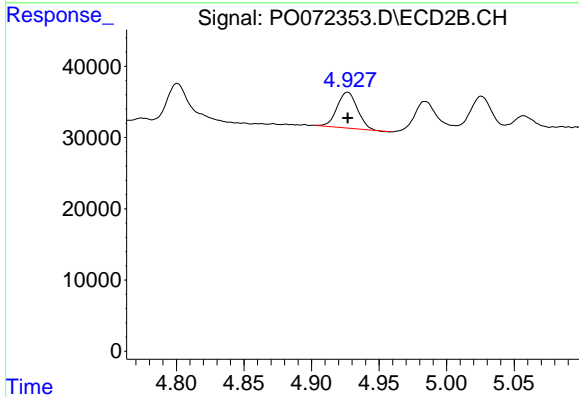


#17 AR-1242-2
 R.T.: 4.742 min
 Delta R.T.: 0.000 min
 Response: 104198
 Conc: 58.92 ng/ml

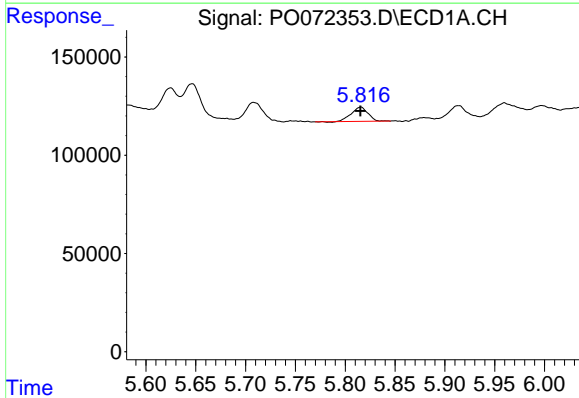


#18 AR-1242-3
 R.T.: 5.708 min
 Delta R.T.: 0.000 min
 Response: 106228
 Conc: 51.14 ng/ml

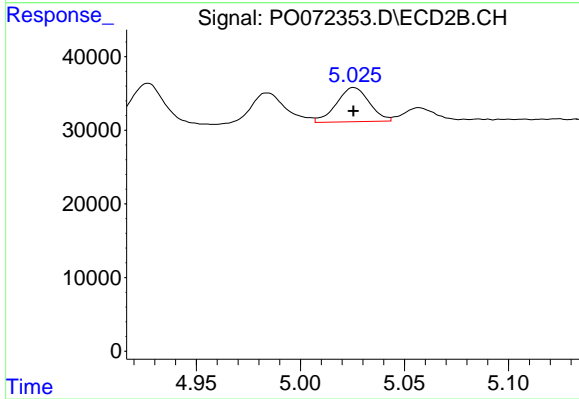
Instrument :
 ECD_O
 ClientSampleId :
 AR1242ICC050



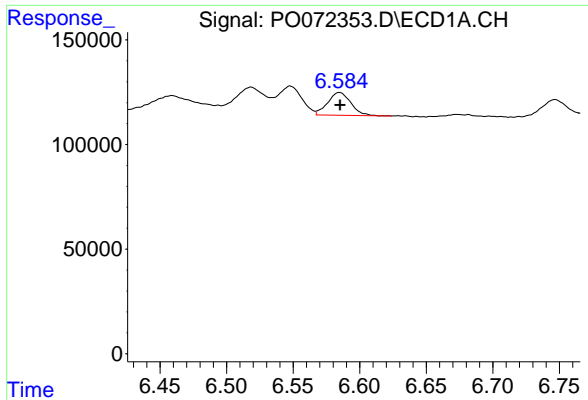
#18 AR-1242-3
 R.T.: 4.927 min
 Delta R.T.: 0.000 min
 Response: 52756
 Conc: 57.31 ng/ml



#19 AR-1242-4
 R.T.: 5.816 min
 Delta R.T.: 0.000 min
 Response: 83339
 Conc: 47.86 ng/ml



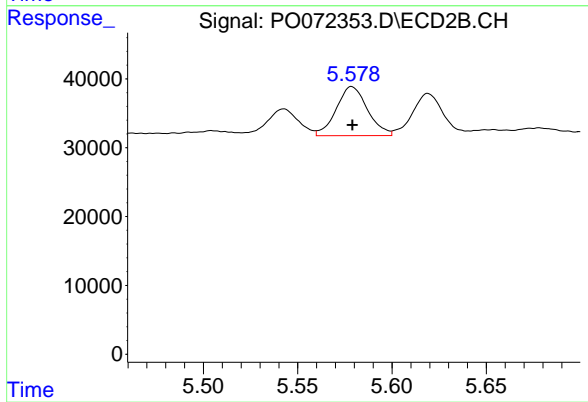
#19 AR-1242-4
 R.T.: 5.026 min
 Delta R.T.: 0.000 min
 Response: 50972
 Conc: 59.12 ng/ml



#20 AR-1242-5

R.T.: 6.585 min
Delta R.T.: 0.000 min
Response: 131920
Conc: 58.47 ng/ml

Instrument :
ECD_O
ClientSampleId :
AR1242ICC050



#20 AR-1242-5

R.T.: 5.579 min
Delta R.T.: 0.000 min
Response: 82092
Conc: 63.91 ng/ml