

Data Path : Z:\pestpcbsrv\HPCHEM1\ECD_0\Data\PO101420\
 Data File : PO072356.D
 Signal(s) : Signal #1: ECD1A.CH Signal #2: ECD2B.CH
 Acq On : 14 Oct 2020 14:36
 Operator : DD\AJ
 Sample : AR1248ICC500
 Misc :
 ALS Vial : 17 Sample Multiplier: 1

Instrument :
 ECD_0
 ClientSampleId :

Integration File signal 1: autoint1.e
 Integration File signal 2: autoint2.e
 Quant Time: Oct 14 15:26:58 2020
 Quant Method : Z:\pestpcbsrv\HPCHEM1\ECD_0\methods\PO101420.M
 Quant Title : GC EXTRACTABLES
 QLast Update : Wed Oct 14 15:25:55 2020
 Response via : Initial Calibration
 Integrator: ChemStation 6890 Scale Mode: Small noise peaks clipped

Volume Inj. : 2 µl
 Signal #1 Phase : ZB-MR1 Signal #2 Phase: ZB-MR2
 Signal #1 Info : 30Mx0.32mmx 0.50µ Signal #2 Info : 30M x 0.32mm x 0.25µm

Compound	RT#1	RT#2	Resp#1	Resp#2	ng/ml	ng/ml

System Monitoring Compounds						
1) SA Tetrachlo...	4.321	3.504	4123550	2021520	50.000	50.000
2) SA Decachlor...	9.925	8.675	5269367	2479070	50.000	50.000
Target Compounds						
21) L5 AR-1248-1	5.625	4.725	952666	510755	500.000	500.000
22) L5 AR-1248-2	5.912	4.985	1267526	693719	500.000	500.000
23) L5 AR-1248-3	6.124	5.026	1460874	662622	500.000	500.000
24) L5 AR-1248-4	6.549	5.205	2119652	826142	500.000	500.000
25) L5 AR-1248-5	6.585	5.620	1975316	913920	500.000	500.000

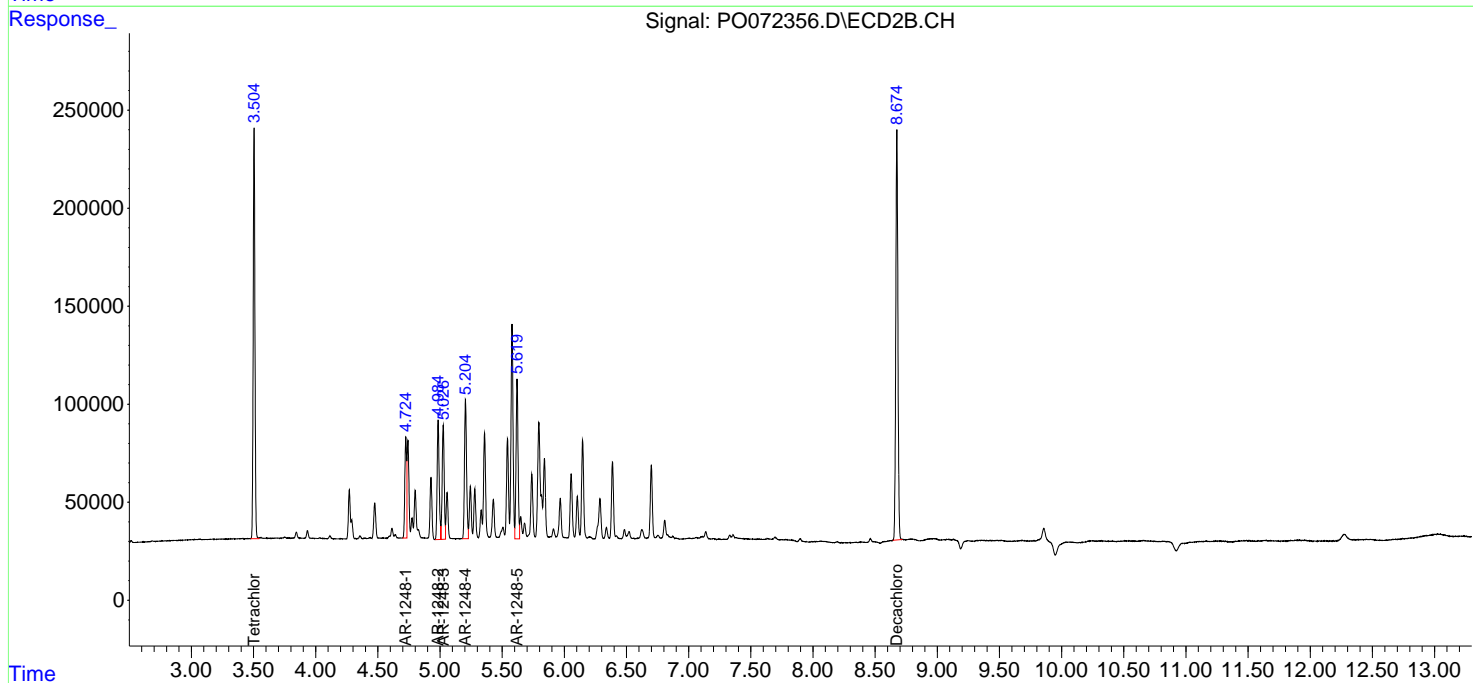
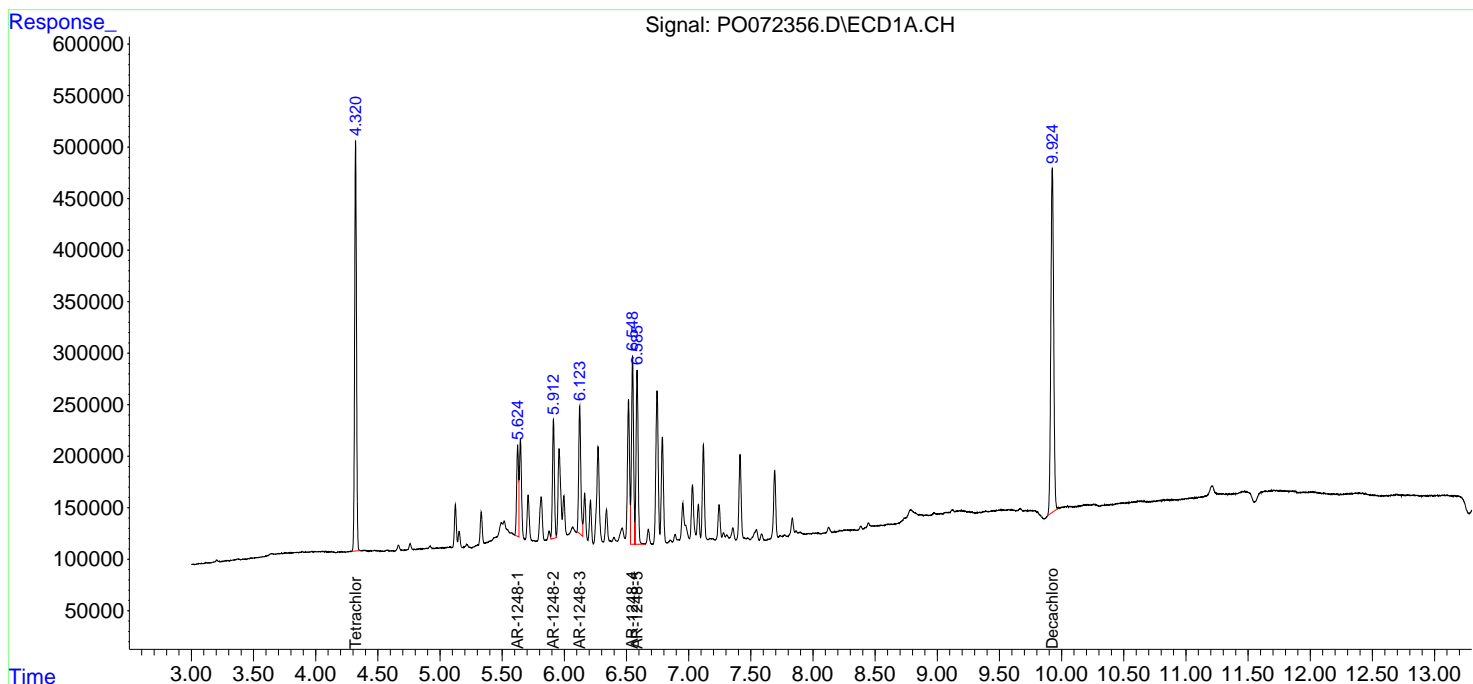
(f)=RT Delta > 1/2 Window (#)=Amounts differ by > 25% (m)=manual int.

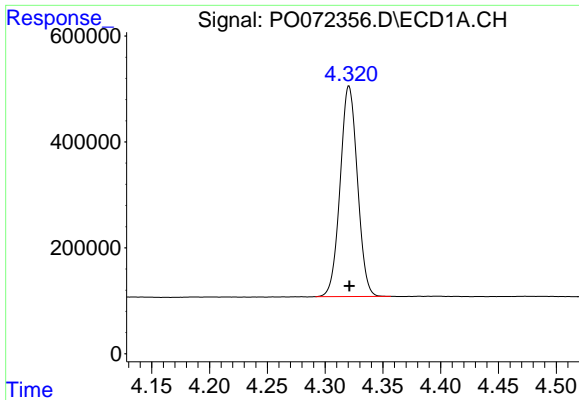
Data Path : Z:\pestpcbsrv\HPCHEM1\ECD_O\Data\PO101420\
 Data File : PO072356.D
 Signal(s) : Signal #1: ECD1A.CH Signal #2: ECD2B.CH
 Acq On : 14 Oct 2020 14:36
 Operator : DD\AJ
 Sample : AR1248ICC500
 Misc :
 ALS Vial : 17 Sample Multiplier: 1

Instrument :
 ECD_O
 ClientSampled :

Integration File signal 1: autoint1.e
 Integration File signal 2: autoint2.e
 Quant Time: Oct 14 15:26:58 2020
 Quant Method : Z:\pestpcbsrv\HPCHEM1\ECD_O\methods\PO101420.M
 Quant Title : GC EXTRACTABLES
 QLast Update : Wed Oct 14 15:25:55 2020
 Response via : Initial Calibration
 Integrator: ChemStation 6890 Scale Mode: Small noise peaks clipped

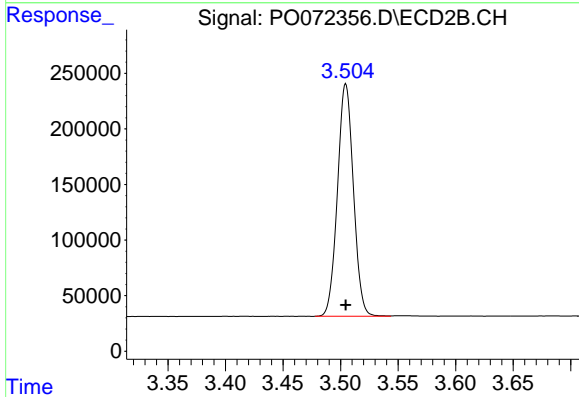
Volume Inj. : 2 µl
 Signal #1 Phase : ZB-MR1 Signal #2 Phase: ZB-MR2
 Signal #1 Info : 30Mx0.32mmx 0.50µ Signal #2 Info : 30M x 0.32mm x 0.25µm



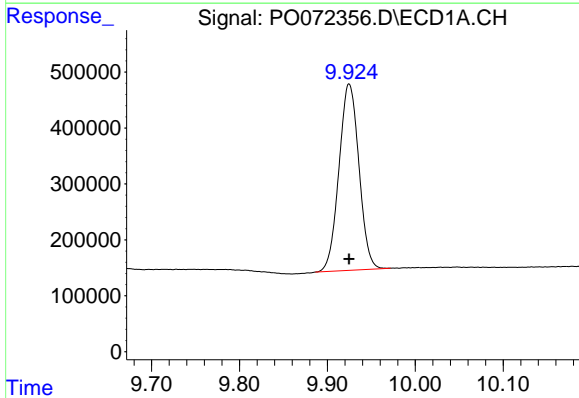


#1 Tetrachloro-m-xylene
 R.T.: 4.321 min
 Delta R.T.: 0.000 min
 Response: 4123550
 Conc: 50.00 ng/ml

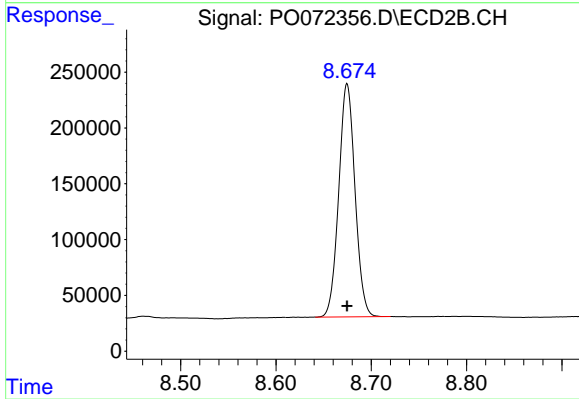
Instrument :
 ECD_O
 ClientSampleId :



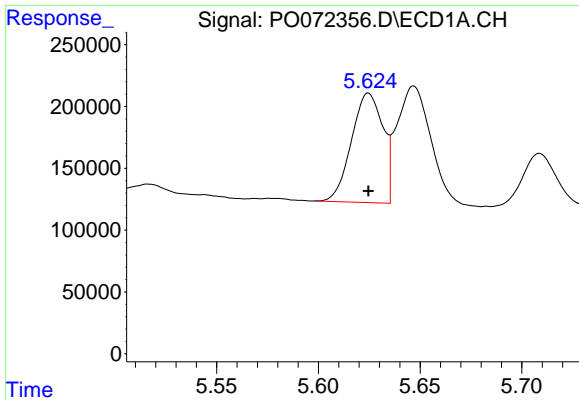
#1 Tetrachloro-m-xylene
 R.T.: 3.504 min
 Delta R.T.: 0.000 min
 Response: 2021520
 Conc: 50.00 ng/ml



#2 Decachlorobiphenyl
 R.T.: 9.925 min
 Delta R.T.: 0.000 min
 Response: 5269367
 Conc: 50.00 ng/ml



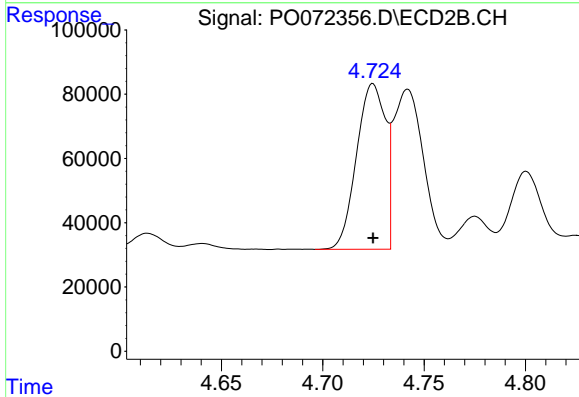
#2 Decachlorobiphenyl
 R.T.: 8.675 min
 Delta R.T.: 0.000 min
 Response: 2479070
 Conc: 50.00 ng/ml



#21 AR-1248-1

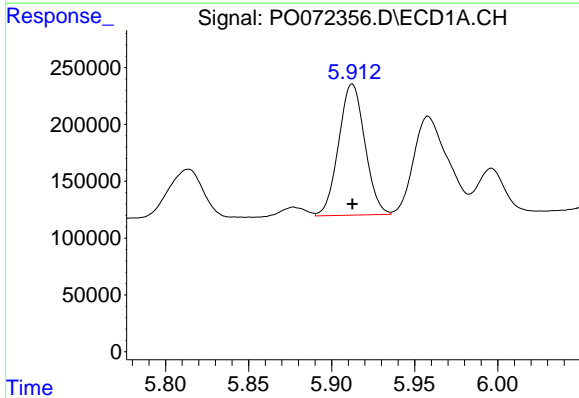
R.T.: 5.625 min
 Delta R.T.: 0.000 min
 Response: 952666
 Conc: 500.00 ng/ml

Instrument :
 ECD_O
 ClientSampled :



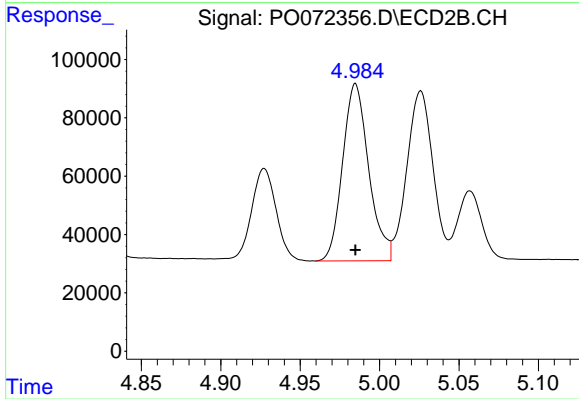
#21 AR-1248-1

R.T.: 4.725 min
 Delta R.T.: 0.000 min
 Response: 510755
 Conc: 500.00 ng/ml



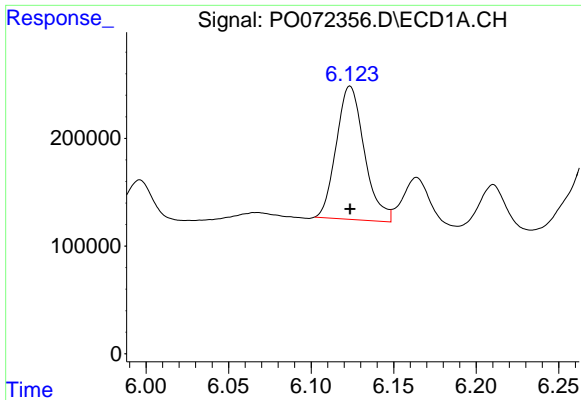
#22 AR-1248-2

R.T.: 5.912 min
 Delta R.T.: 0.000 min
 Response: 1267526
 Conc: 500.00 ng/ml



#22 AR-1248-2

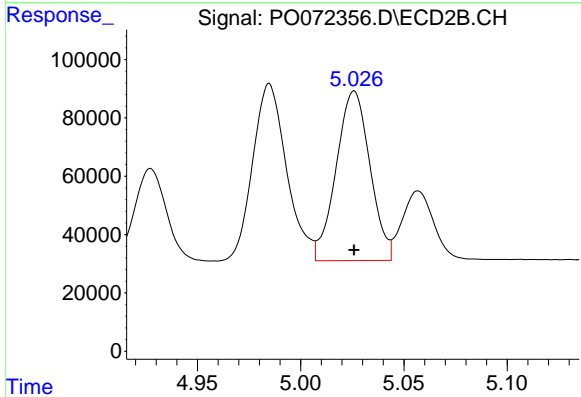
R.T.: 4.985 min
 Delta R.T.: 0.000 min
 Response: 693719
 Conc: 500.00 ng/ml



#23 AR-1248-3

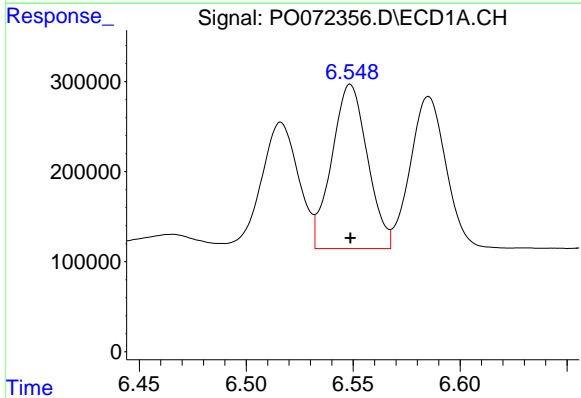
R.T.: 6.124 min
 Delta R.T.: 0.000 min
 Response: 1460874
 Conc: 500.00 ng/ml

Instrument :
 ECD_O
 ClientSampleId :



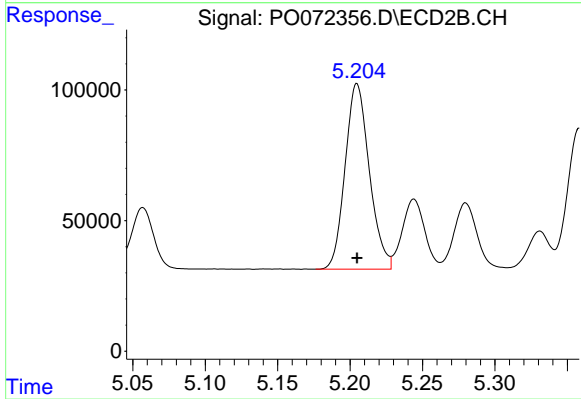
#23 AR-1248-3

R.T.: 5.026 min
 Delta R.T.: 0.000 min
 Response: 662622
 Conc: 500.00 ng/ml



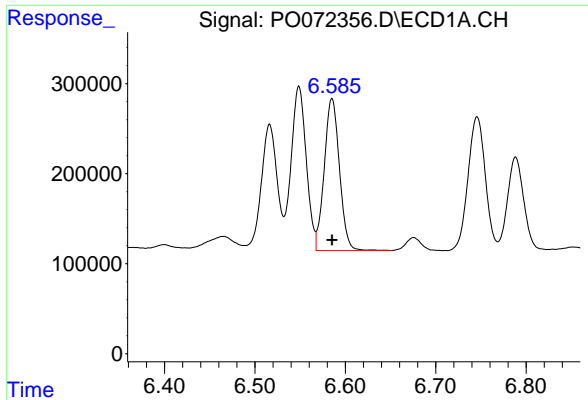
#24 AR-1248-4

R.T.: 6.549 min
 Delta R.T.: 0.000 min
 Response: 2119652
 Conc: 500.00 ng/ml



#24 AR-1248-4

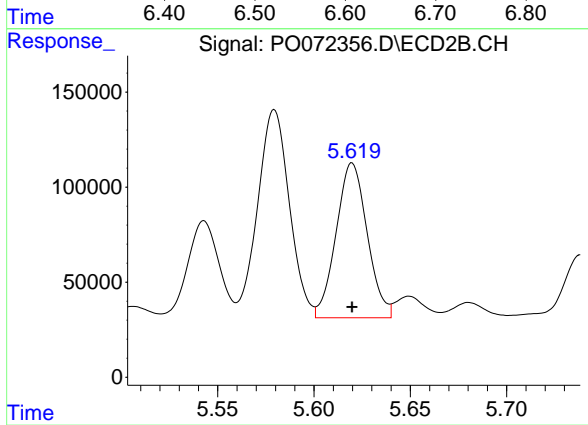
R.T.: 5.205 min
 Delta R.T.: 0.000 min
 Response: 826142
 Conc: 500.00 ng/ml



#25 AR-1248-5

R.T.: 6.585 min
Delta R.T.: 0.000 min
Response: 1975316
Conc: 500.00 ng/ml

Instrument :
ECD_O
ClientSampleId :



#25 AR-1248-5

R.T.: 5.620 min
Delta R.T.: 0.000 min
Response: 913920
Conc: 500.00 ng/ml