

Data Path : Z:\pestpcbsrv\HPCHEM1\ECD\_0\Data\PO101420\  
 Data File : PO072359.D  
 Signal(s) : Signal #1: ECD1A.CH Signal #2: ECD2B.CH  
 Acq On : 14 Oct 2020 15:27  
 Operator : DD\AJ  
 Sample : AR1254ICC1000  
 Misc :  
 ALS Vial : 20 Sample Multiplier: 1

Instrument :  
 ECD\_0  
 ClientSampleId :

Integration File signal 1: autoint1.e  
 Integration File signal 2: autoint2.e  
 Quant Time: Oct 14 16:51:38 2020  
 Quant Method : Z:\pestpcbsrv\HPCHEM1\ECD\_0\methods\PO101420.M  
 Quant Title : GC EXTRACTABLES  
 QLast Update : Wed Oct 14 16:51:07 2020  
 Response via : Initial Calibration  
 Integrator: ChemStation 6890 Scale Mode: Small noise peaks clipped

Volume Inj. : 2 µl  
 Signal #1 Phase : ZB-MR1 Signal #2 Phase: ZB-MR2  
 Signal #1 Info : 30Mx0.32mmx 0.50µ Signal #2 Info : 30M x 0.32mm x 0.25µm

Compound	RT#1	RT#2	Resp#1	Resp#2	ng/ml	ng/ml
-----						
System Monitoring Compounds						
1) SA Tetrachlo...	4.323	3.506	7769514	3737606	97.662	95.942
2) SA Decachlor...	9.927	8.676	9759937	4530088	95.365	94.002
Target Compounds						
26) L6 AR-1254-1	6.516	5.579	3747501	2433974	931.041	923.382
27) L6 AR-1254-2	6.744	5.740	6062742	2113409	958.079	910.821
28) L6 AR-1254-3	7.121	6.148	6479125	3411887	968.721	934.711
29) L6 AR-1254-4	7.416	6.389	6084401	2365650	950.922	928.596
30) L6 AR-1254-5	7.836	6.810	5934135	3281364	957.998	934.868
-----						

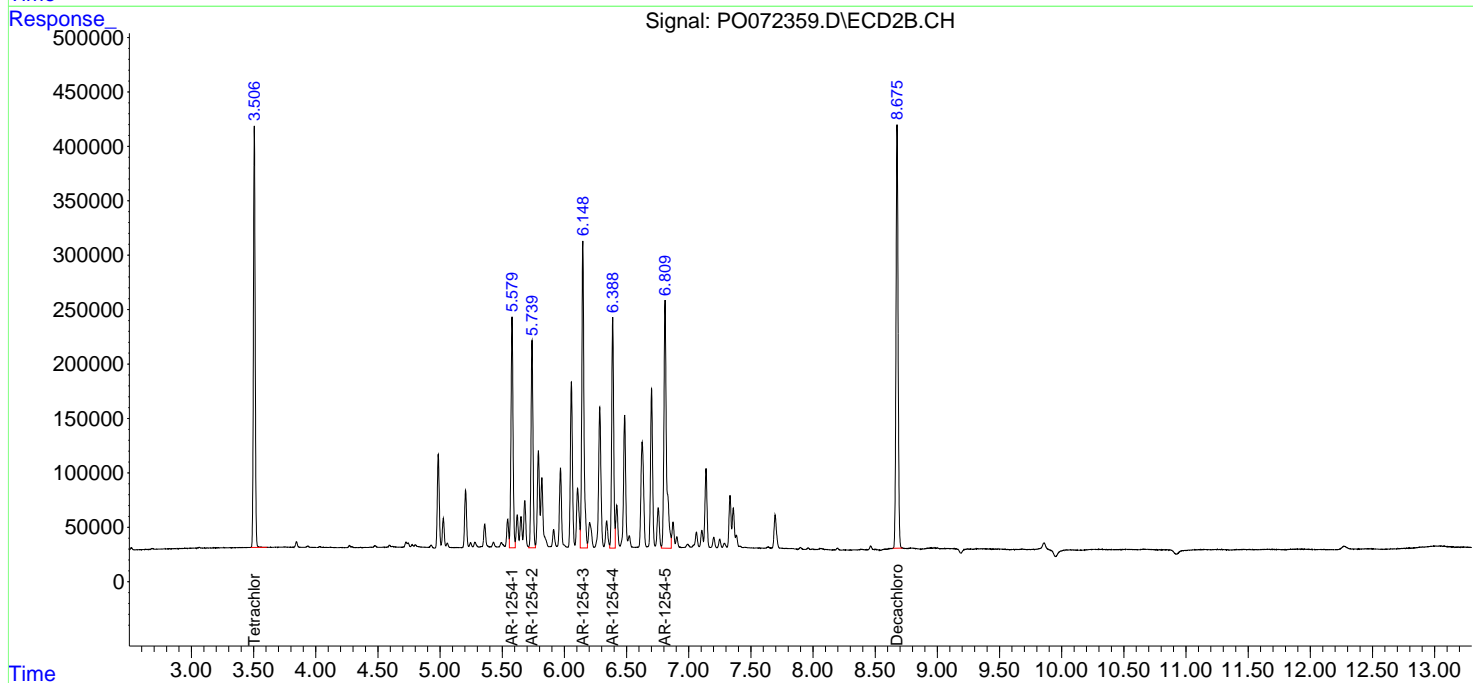
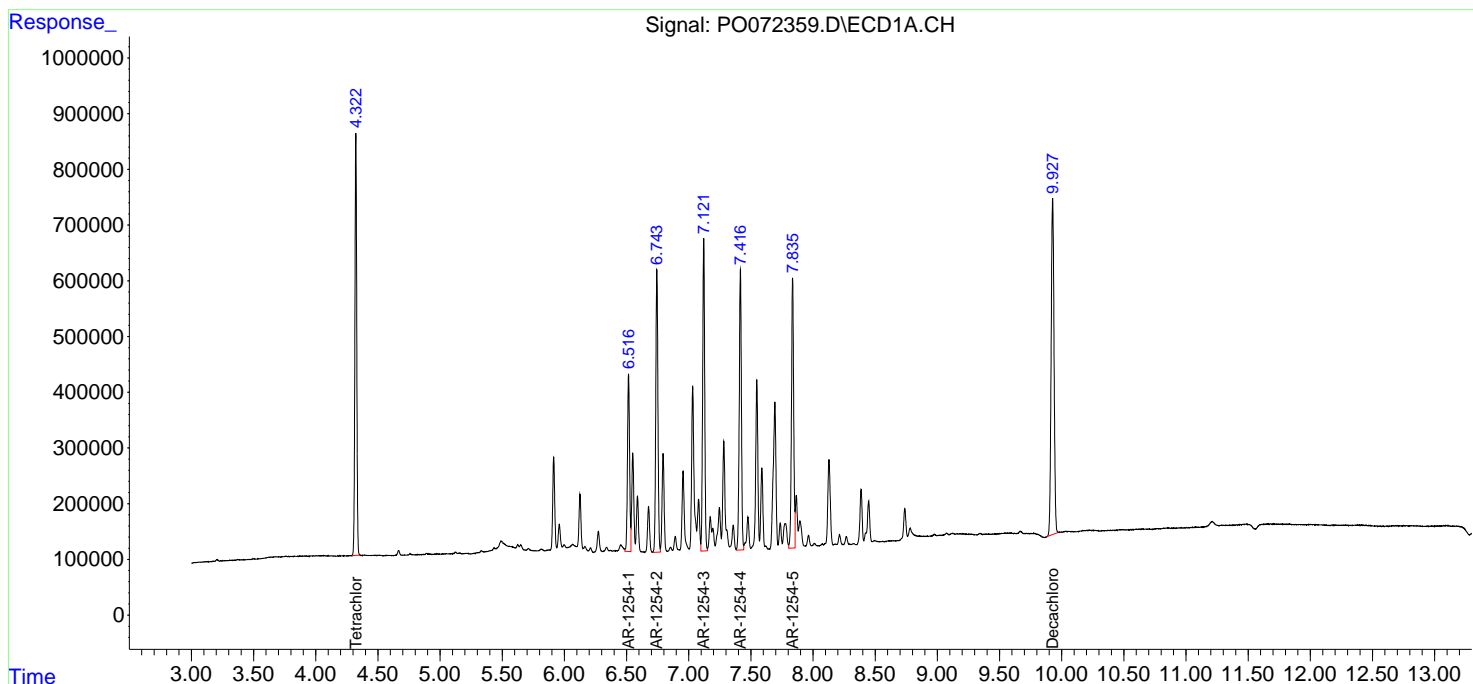
(f)=RT Delta > 1/2 Window (#)=Amounts differ by > 25% (m)=manual int.

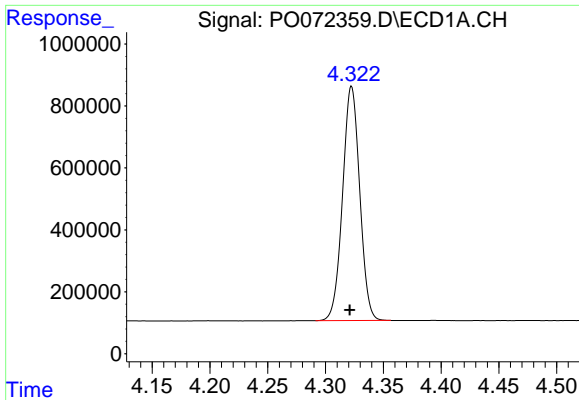
Data Path : Z:\pestpcbsrv\HPCHEM1\ECD\_O\Data\PO101420\  
 Data File : PO072359.D  
 Signal(s) : Signal #1: ECD1A.CH Signal #2: ECD2B.CH  
 Acq On : 14 Oct 2020 15:27  
 Operator : DD\AJ  
 Sample : AR1254IC1000  
 Misc :  
 ALS Vial : 20 Sample Multiplier: 1

Instrument :  
 ECD\_O  
 ClientSampled :

Integration File signal 1: autoint1.e  
 Integration File signal 2: autoint2.e  
 Quant Time: Oct 14 16:51:38 2020  
 Quant Method : Z:\pestpcbsrv\HPCHEM1\ECD\_O\methods\PO101420.M  
 Quant Title : GC EXTRACTABLES  
 QLast Update : Wed Oct 14 16:51:07 2020  
 Response via : Initial Calibration  
 Integrator: ChemStation 6890 Scale Mode: Small noise peaks clipped

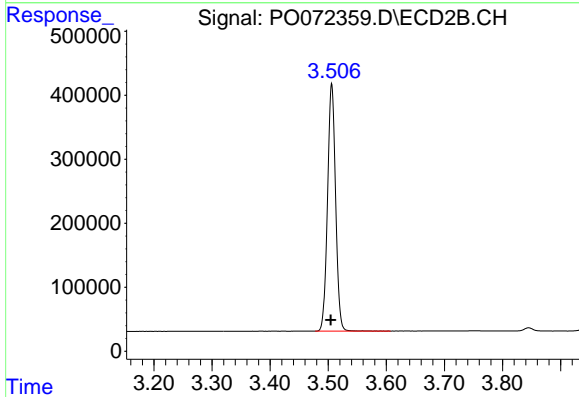
Volume Inj. : 2 µl  
 Signal #1 Phase : ZB-MR1 Signal #2 Phase: ZB-MR2  
 Signal #1 Info : 30Mx0.32mmx 0.50µm Signal #2 Info : 30M x 0.32mm x 0.25µm



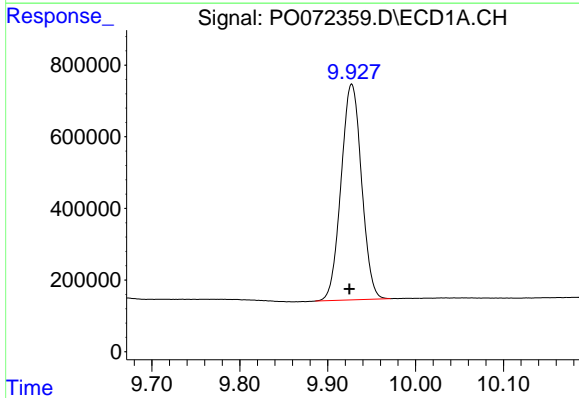


#1 Tetrachloro-m-xylene  
R.T.: 4.323 min  
Delta R.T.: 0.002 min  
Response: 7769514  
Conc: 97.66 ng/ml

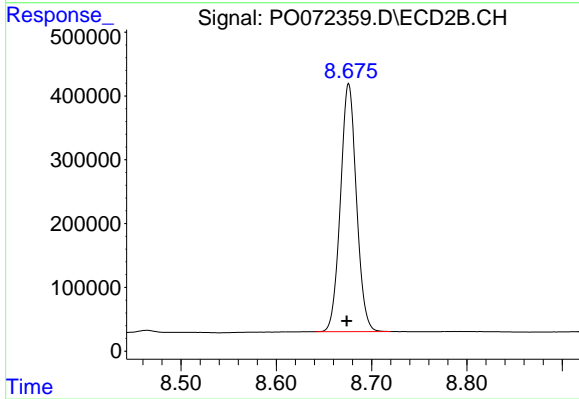
Instrument :  
ECD\_O  
ClientSampleId :



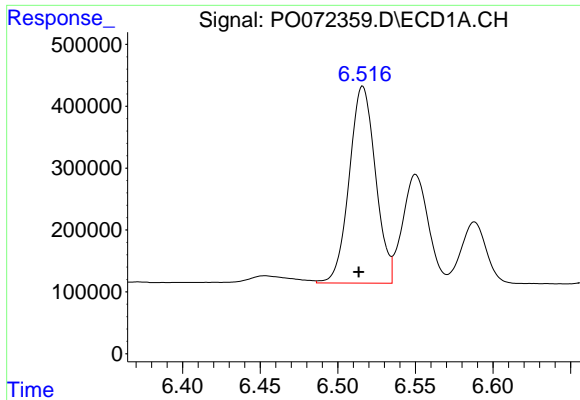
#1 Tetrachloro-m-xylene  
R.T.: 3.506 min  
Delta R.T.: 0.002 min  
Response: 3737606  
Conc: 95.94 ng/ml



#2 Decachlorobiphenyl  
R.T.: 9.927 min  
Delta R.T.: 0.002 min  
Response: 9759937  
Conc: 95.37 ng/ml



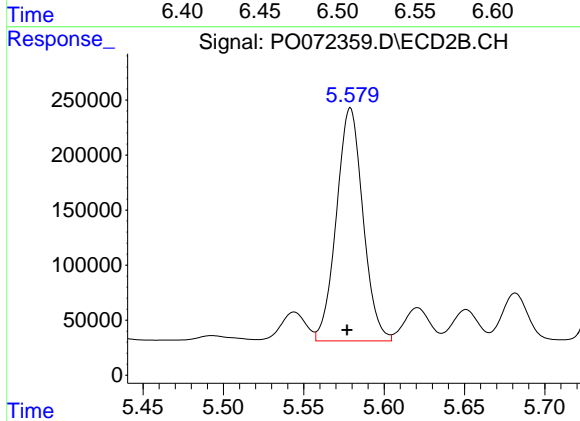
#2 Decachlorobiphenyl  
R.T.: 8.676 min  
Delta R.T.: 0.002 min  
Response: 4530088  
Conc: 94.00 ng/ml



#26 AR-1254-1

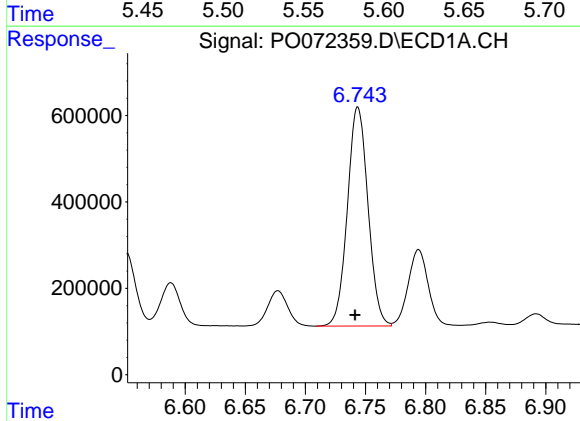
R.T.: 6.516 min  
 Delta R.T.: 0.002 min  
 Response: 3747501  
 Conc: 931.04 ng/ml

Instrument :  
 ECD\_O  
 ClientSampled :



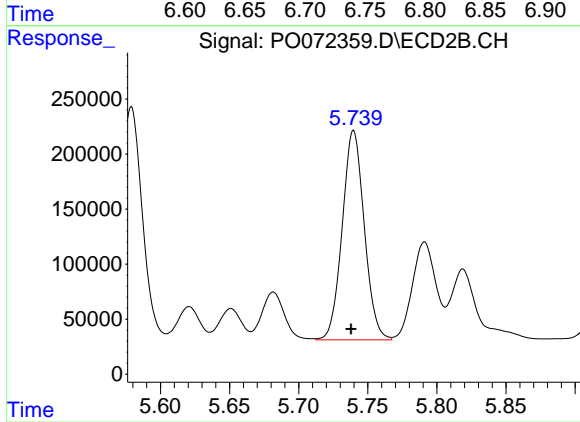
#26 AR-1254-1

R.T.: 5.579 min  
 Delta R.T.: 0.002 min  
 Response: 2433974  
 Conc: 923.38 ng/ml



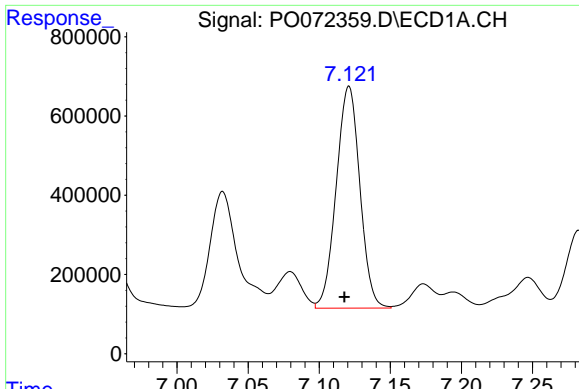
#27 AR-1254-2

R.T.: 6.744 min  
 Delta R.T.: 0.002 min  
 Response: 6062742  
 Conc: 958.08 ng/ml



#27 AR-1254-2

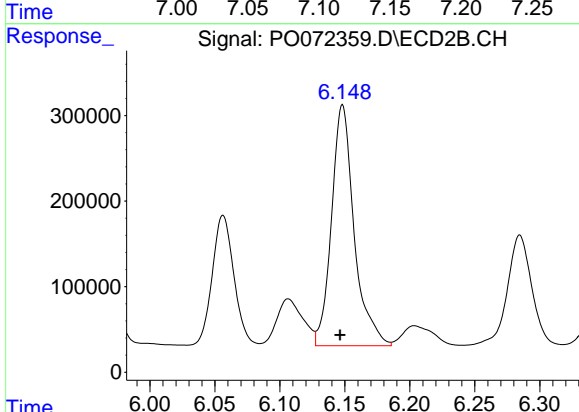
R.T.: 5.740 min  
 Delta R.T.: 0.002 min  
 Response: 2113409  
 Conc: 910.82 ng/ml



#28 AR-1254-3

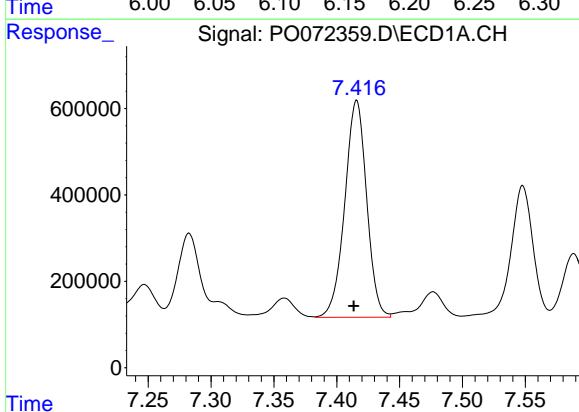
R.T.: 7.121 min  
 Delta R.T.: 0.003 min  
 Response: 6479125  
 Conc: 968.72 ng/ml

Instrument :  
 ECD\_O  
 ClientSampled :



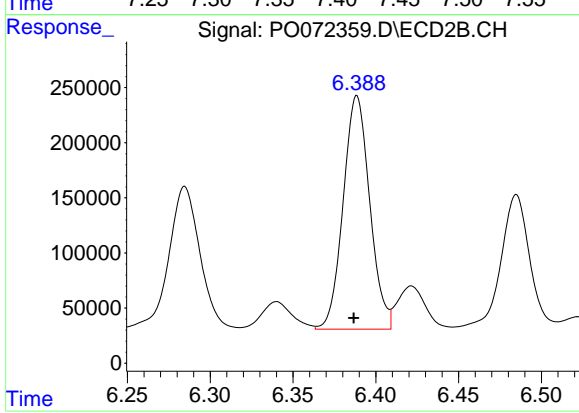
#28 AR-1254-3

R.T.: 6.148 min  
 Delta R.T.: 0.002 min  
 Response: 3411887  
 Conc: 934.71 ng/ml



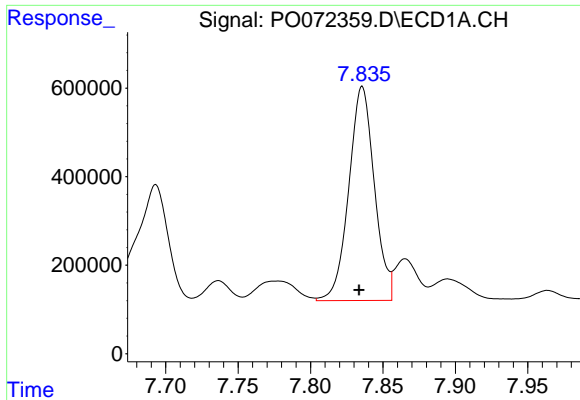
#29 AR-1254-4

R.T.: 7.416 min  
 Delta R.T.: 0.002 min  
 Response: 6084401  
 Conc: 950.92 ng/ml



#29 AR-1254-4

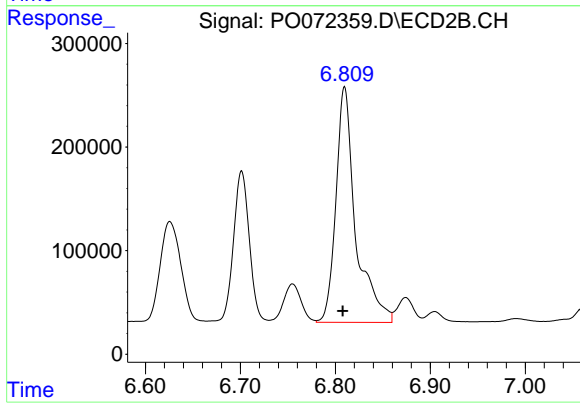
R.T.: 6.389 min  
 Delta R.T.: 0.002 min  
 Response: 2365650  
 Conc: 928.60 ng/ml



#30 AR-1254-5

R.T.: 7.836 min  
Delta R.T.: 0.002 min  
Response: 5934135  
Conc: 958.00 ng/ml

Instrument :  
ECD\_O  
ClientSampleId :



#30 AR-1254-5

R.T.: 6.810 min  
Delta R.T.: 0.002 min  
Response: 3281364  
Conc: 934.87 ng/ml