

Data Path : Z:\pestpcbsrv\HPCHEM1\ECD_0\Data\PO101420\
 Data File : PO072362.D
 Signal(s) : Signal #1: ECD1A.CH Signal #2: ECD2B.CH
 Acq On : 14 Oct 2020 16:18
 Operator : DD\AJ
 Sample : AR1254ICC250
 Misc :
 ALS Vial : 23 Sample Multiplier: 1

Instrument :
 ECD_0
 ClientSampleId :

Integration File signal 1: autoint1.e
 Integration File signal 2: autoint2.e
 Quant Time: Oct 14 16:52:14 2020
 Quant Method : Z:\pestpcbsrv\HPCHEM1\ECD_0\methods\PO101420.M
 Quant Title : GC EXTRACTABLES
 QLast Update : Wed Oct 14 16:51:07 2020
 Response via : Initial Calibration
 Integrator: ChemStation 6890 Scale Mode: Small noise peaks clipped

Volume Inj. : 2 µl
 Signal #1 Phase : ZB-MR1 Signal #2 Phase: ZB-MR2
 Signal #1 Info : 30Mx0.32mmx 0.50µ Signal #2 Info : 30M x 0.32mm x 0.25µm

Compound	RT#1	RT#2	Resp#1	Resp#2	ng/ml	ng/ml

System Monitoring Compounds						
1) SA Tetrachlo...	4.320	3.504	1958755	971522	24.621	24.938
2) SA Decachlor...	9.924	8.674	2666917	1276859	26.059	26.496
Target Compounds						
26) L6 AR-1254-1	6.513	5.577	1070320	712218	265.914	270.195
27) L6 AR-1254-2	6.741	5.738	1633556	631419	258.147	272.124
28) L6 AR-1254-3	7.117	6.146	1759169	963894	263.021	264.066
29) L6 AR-1254-4	7.413	6.386	1672767	680590	261.434	267.154
30) L6 AR-1254-5	7.833	6.808	1583049	934217	255.565	266.161

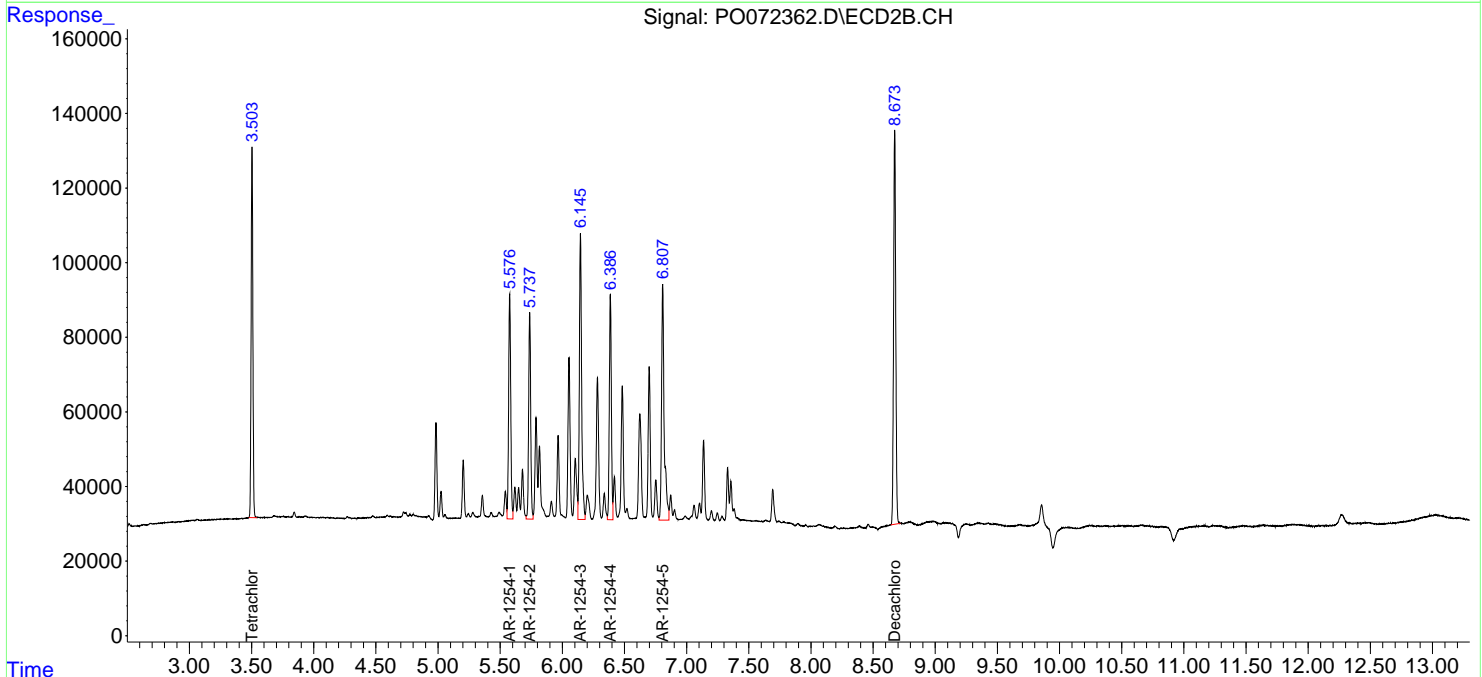
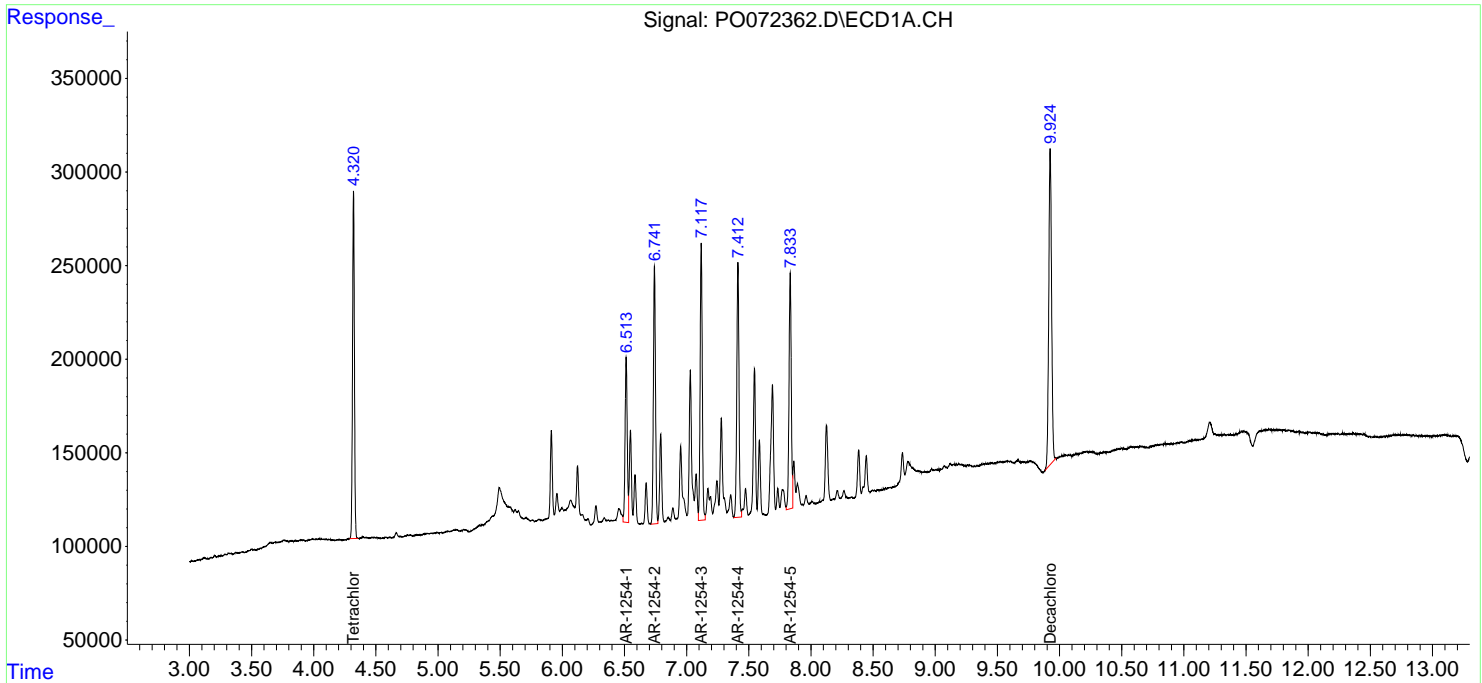
(f)=RT Delta > 1/2 Window (#)=Amounts differ by > 25% (m)=manual int.

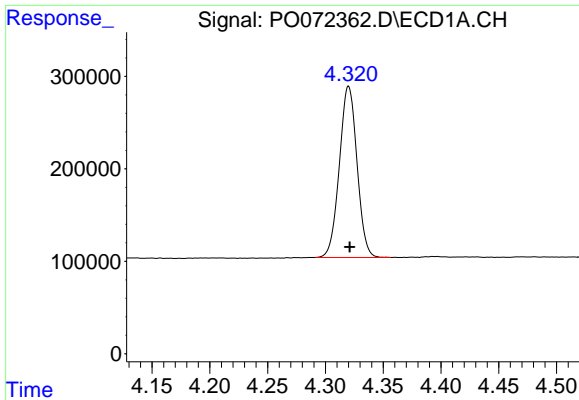
Data Path : Z:\pestpcbsrv\HPCHEM1\ECD_O\Data\PO101420\
 Data File : PO072362.D
 Signal(s) : Signal #1: ECD1A.CH Signal #2: ECD2B.CH
 Acq On : 14 Oct 2020 16:18
 Operator : DD\AJ
 Sample : AR1254IC250
 Misc :
 ALS Vial : 23 Sample Multiplier: 1

Instrument :
 ECD_O
 ClientSampleId :

Integration File signal 1: autoint1.e
 Integration File signal 2: autoint2.e
 Quant Time: Oct 14 16:52:14 2020
 Quant Method : Z:\pestpcbsrv\HPCHEM1\ECD_O\methods\PO101420.M
 Quant Title : GC EXTRACTABLES
 QLast Update : Wed Oct 14 16:51:07 2020
 Response via : Initial Calibration
 Integrator: ChemStation 6890 Scale Mode: Small noise peaks clipped

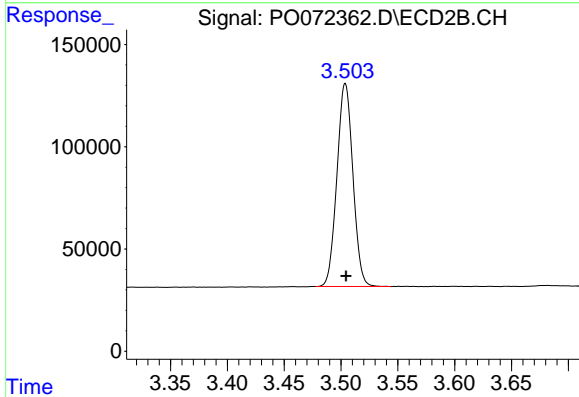
Volume Inj. : 2 µl
 Signal #1 Phase : ZB-MR1 Signal #2 Phase: ZB-MR2
 Signal #1 Info : 30Mx0.32mmx 0.50µm Signal #2 Info : 30M x 0.32mm x 0.25µm



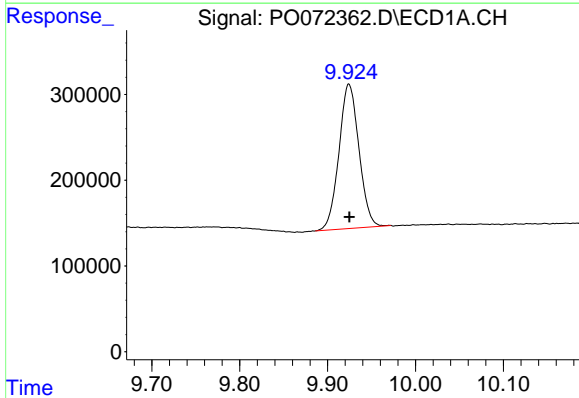


#1 Tetrachloro-m-xylene
 R.T.: 4.320 min
 Delta R.T.: 0.000 min
 Response: 1958755
 Conc: 24.62 ng/ml

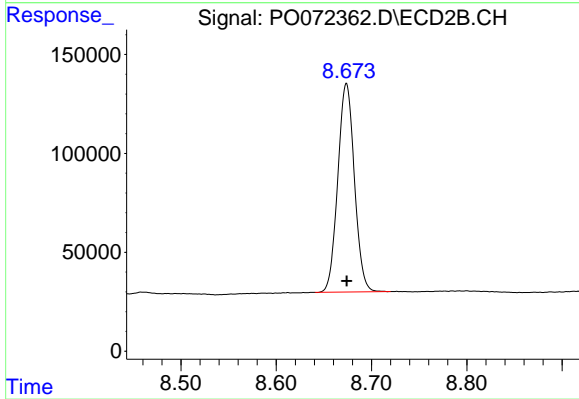
Instrument :
 ECD_O
 ClientSampled :



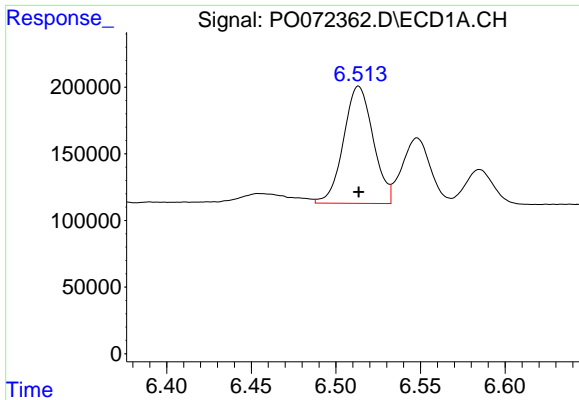
#1 Tetrachloro-m-xylene
 R.T.: 3.504 min
 Delta R.T.: 0.000 min
 Response: 971522
 Conc: 24.94 ng/ml



#2 Decachlorobiphenyl
 R.T.: 9.924 min
 Delta R.T.: 0.000 min
 Response: 2666917
 Conc: 26.06 ng/ml



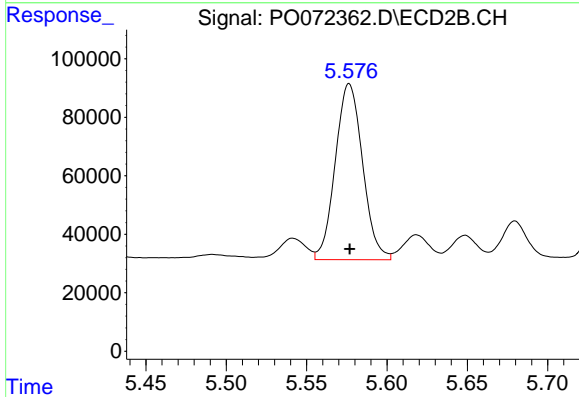
#2 Decachlorobiphenyl
 R.T.: 8.674 min
 Delta R.T.: 0.000 min
 Response: 1276859
 Conc: 26.50 ng/ml



#26 AR-1254-1

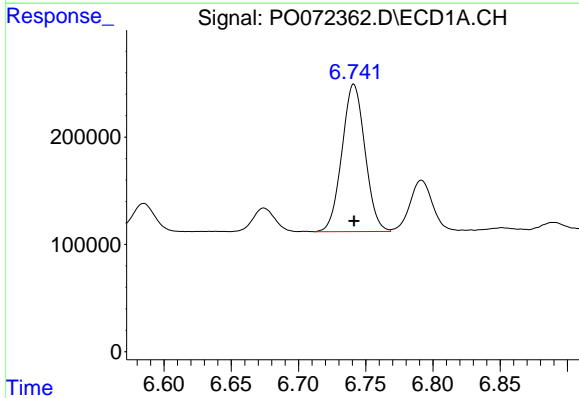
R.T.: 6.513 min
Delta R.T.: 0.000 min
Response: 1070320
Conc: 265.91 ng/ml

Instrument :
ECD_O
ClientSampleId :



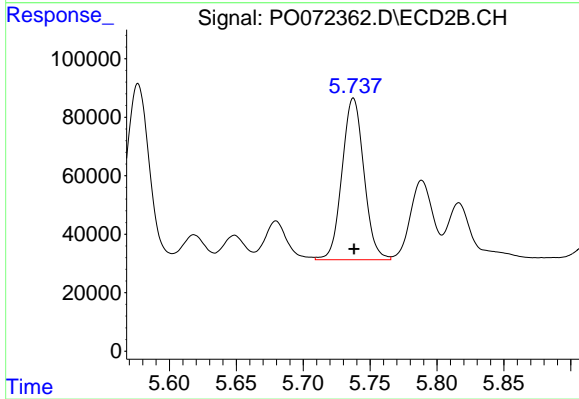
#26 AR-1254-1

R.T.: 5.577 min
Delta R.T.: 0.000 min
Response: 712218
Conc: 270.20 ng/ml



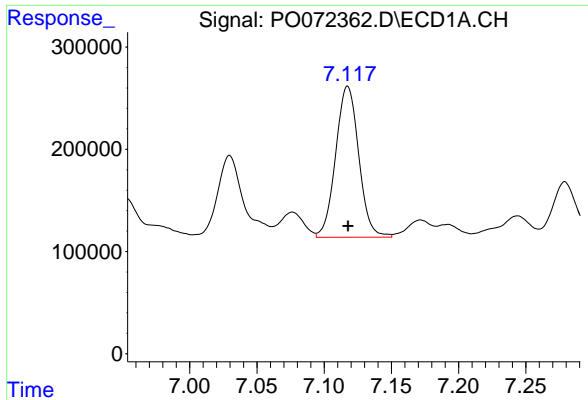
#27 AR-1254-2

R.T.: 6.741 min
Delta R.T.: 0.000 min
Response: 1633556
Conc: 258.15 ng/ml



#27 AR-1254-2

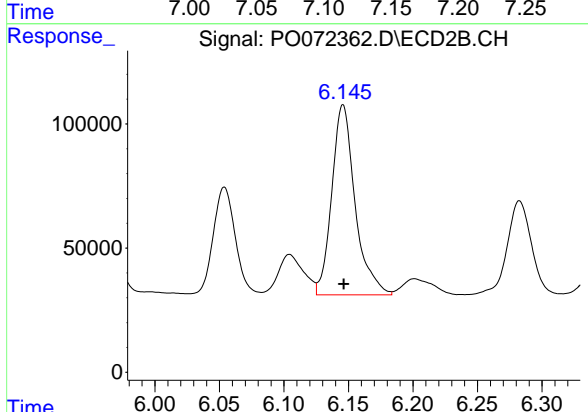
R.T.: 5.738 min
Delta R.T.: 0.000 min
Response: 631419
Conc: 272.12 ng/ml



#28 AR-1254-3

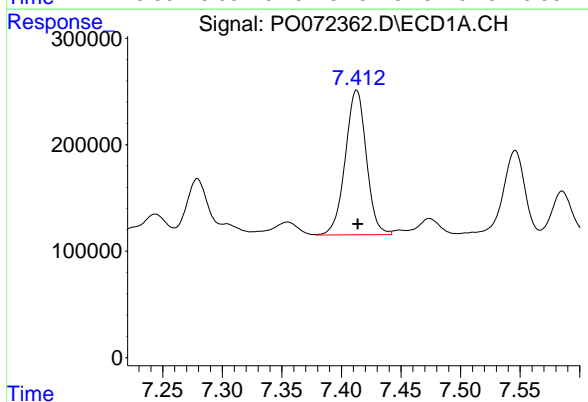
R.T.: 7.117 min
 Delta R.T.: 0.000 min
 Response: 1759169
 Conc: 263.02 ng/ml

Instrument :
 ECD_O
 ClientSampled :



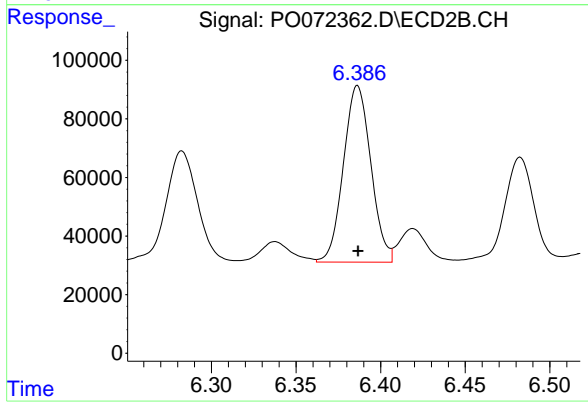
#28 AR-1254-3

R.T.: 6.146 min
 Delta R.T.: 0.000 min
 Response: 963894
 Conc: 264.07 ng/ml



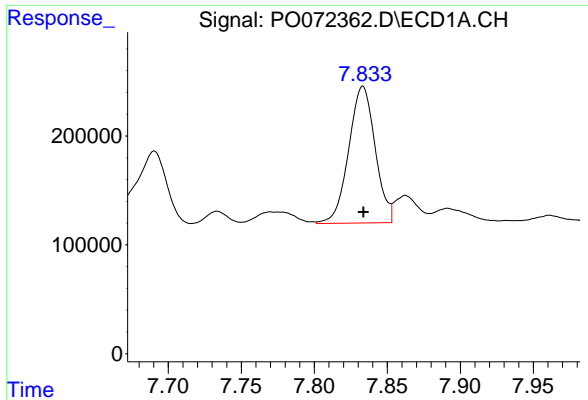
#29 AR-1254-4

R.T.: 7.413 min
 Delta R.T.: 0.000 min
 Response: 1672767
 Conc: 261.43 ng/ml



#29 AR-1254-4

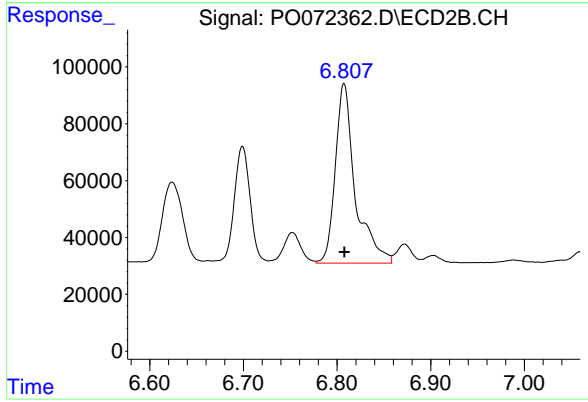
R.T.: 6.386 min
 Delta R.T.: 0.000 min
 Response: 680590
 Conc: 267.15 ng/ml



#30 AR-1254-5

R.T.: 7.833 min
Delta R.T.: 0.000 min
Response: 1583049
Conc: 255.57 ng/ml

Instrument :
ECD_O
ClientSampleId :



#30 AR-1254-5

R.T.: 6.808 min
Delta R.T.: 0.000 min
Response: 934217
Conc: 266.16 ng/ml