

Data Path : Z:\pestpcbsrv\HPCHEM1\ECD\_0\Data\PO101520\  
 Data File : PO072386.D  
 Signal(s) : Signal #1: ECD1A.CH Signal #2: ECD2B.CH  
 Acq On : 15 Oct 2020 16:00  
 Operator : DD\AJ  
 Sample : AR1254CCC500  
 Misc :  
 ALS Vial : 5 Sample Multiplier: 1

Instrument :  
 ECD\_0  
 ClientSampleId :  
 AR1254CCC500

Integration File signal 1: autoint1.e  
 Integration File signal 2: autoint2.e  
 Quant Time: Oct 15 16:32:24 2020  
 Quant Method : Z:\pestpcbsrv\HPCHEM1\ECD\_0\methods\PO101420.M  
 Quant Title : GC EXTRACTABLES  
 QLast Update : Wed Oct 14 17:47:24 2020  
 Response via : Initial Calibration  
 Integrator: ChemStation 6890 Scale Mode: Small noise peaks clipped

Volume Inj. : 2 µl  
 Signal #1 Phase : ZB-MR1 Signal #2 Phase: ZB-MR2  
 Signal #1 Info : 30Mx0.32mmx 0.50µ Signal #2 Info : 30M x 0.32mm x 0.25µm

Compound	RT#1	RT#2	Resp#1	Resp#2	ng/ml	ng/ml
-----						
System Monitoring Compounds						
1) SA Tetrachlo...	4.324	3.505	4176151	2017240	49.236	47.890
2) SA Decachlor...	9.927	8.673	5257308	2397786	47.662	46.383
Target Compounds						
26) L6 AR-1254-1	6.516	5.576	1979724	1368969	468.637	495.251
27) L6 AR-1254-2	6.744	5.738	3243251	1191787	500.431	490.191
28) L6 AR-1254-3	7.120	6.146	3433905	1876006	505.225	487.518
29) L6 AR-1254-4	7.415	6.387	3269437	1303948	493.258	485.596
30) L6 AR-1254-5	7.836	6.807	3102185	1796379	484.285	490.183
-----						

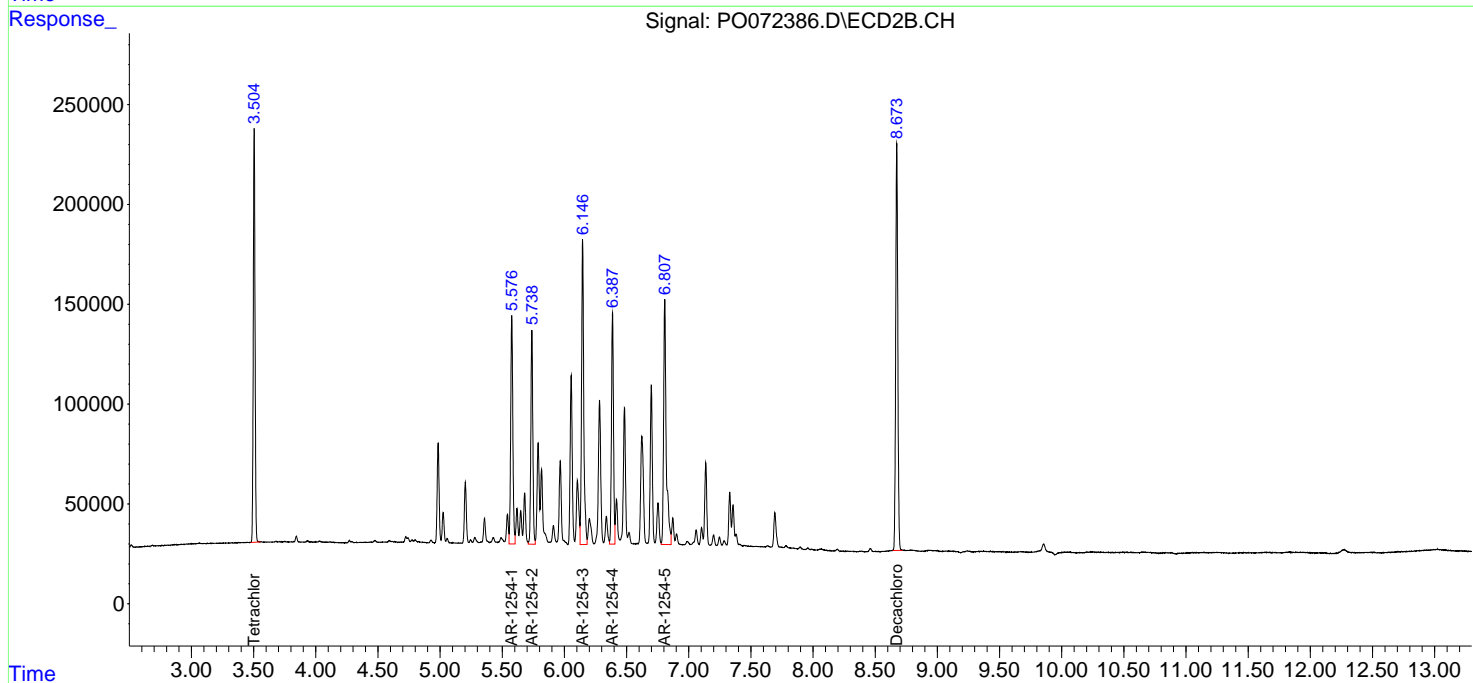
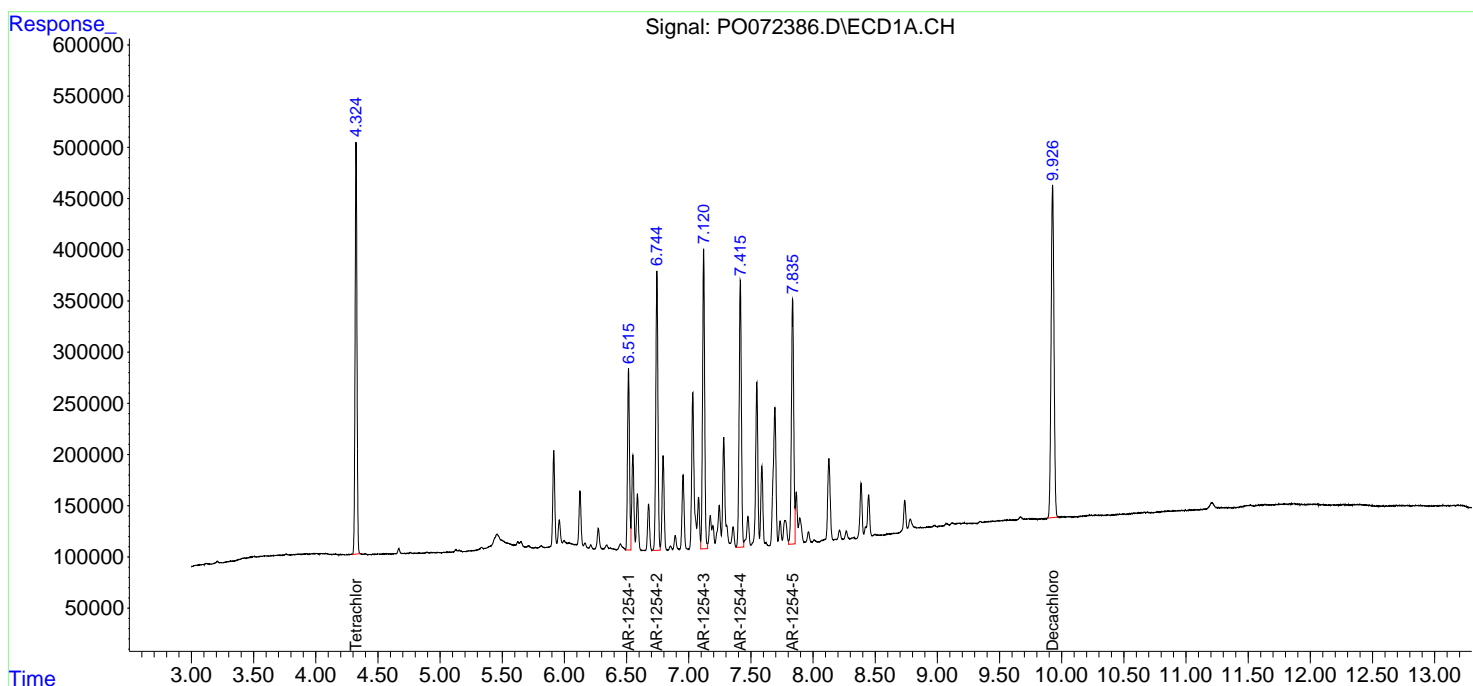
(f)=RT Delta > 1/2 Window (#)=Amounts differ by > 25% (m)=manual int.

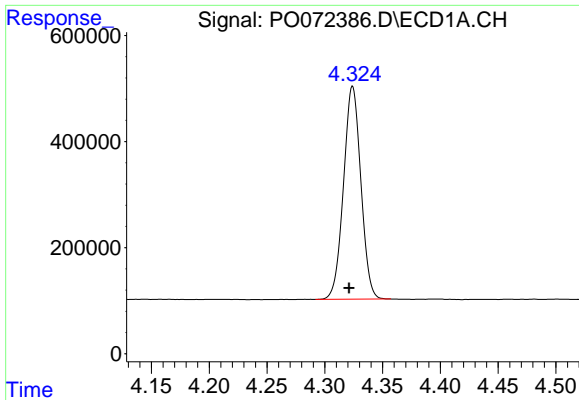
Data Path : Z:\pestpcbsrv\HPCHEM1\ECD\_O\Data\PO101520\  
 Data File : PO072386.D  
 Signal(s) : Signal #1: ECD1A.CH Signal #2: ECD2B.CH  
 Acq On : 15 Oct 2020 16:00  
 Operator : DD\AJ  
 Sample : AR1254CCC500  
 Misc :  
 ALS Vial : 5 Sample Multiplier: 1

Instrument :  
 ECD\_O  
 ClientSampleID :  
 AR1254CCC500

Integration File signal 1: autoint1.e  
 Integration File signal 2: autoint2.e  
 Quant Time: Oct 15 16:32:24 2020  
 Quant Method : Z:\pestpcbsrv\HPCHEM1\ECD\_O\methods\PO101420.M  
 Quant Title : GC EXTRACTABLES  
 QLast Update : Wed Oct 14 17:47:24 2020  
 Response via : Initial Calibration  
 Integrator: ChemStation 6890 Scale Mode: Small noise peaks clipped

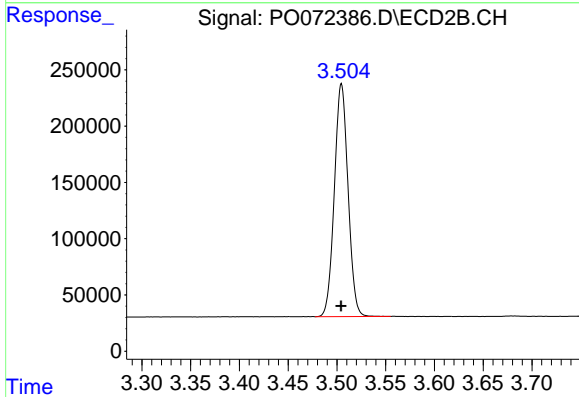
Volume Inj. : 2 µl  
 Signal #1 Phase : ZB-MR1 Signal #2 Phase: ZB-MR2  
 Signal #1 Info : 30Mx0.32mmx 0.50µm Signal #2 Info : 30M x 0.32mm x 0.25µm



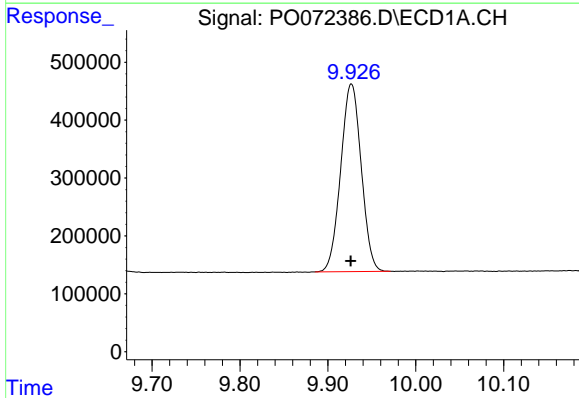


#1 Tetrachloro-m-xylene  
 R.T.: 4.324 min  
 Delta R.T.: 0.003 min  
 Response: 4176151  
 Conc: 49.24 ng/ml

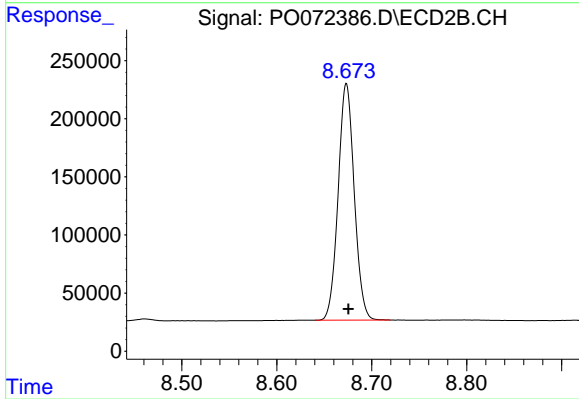
Instrument :  
 ECD\_O  
 ClientSampleId :  
 AR1254CCC500



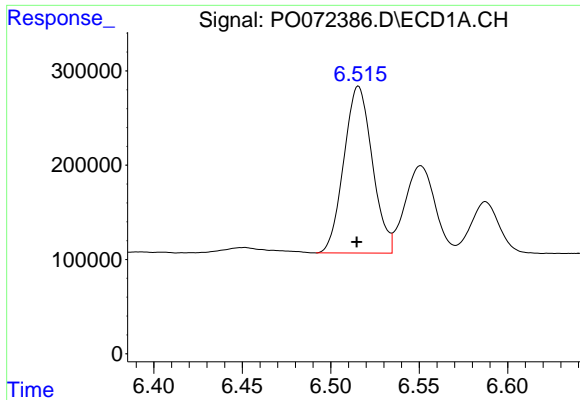
#1 Tetrachloro-m-xylene  
 R.T.: 3.505 min  
 Delta R.T.: 0.000 min  
 Response: 2017240  
 Conc: 47.89 ng/ml



#2 Decachlorobiphenyl  
 R.T.: 9.927 min  
 Delta R.T.: 0.000 min  
 Response: 5257308  
 Conc: 47.66 ng/ml



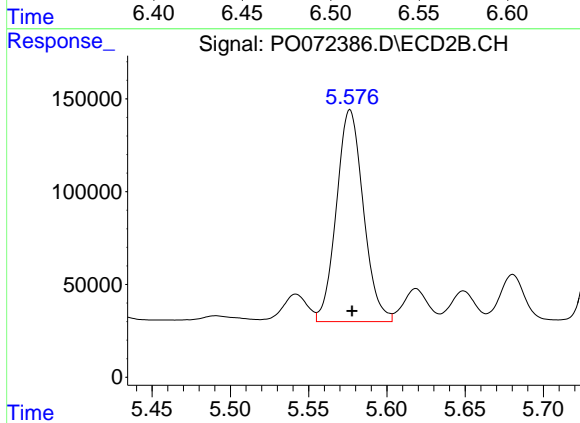
#2 Decachlorobiphenyl  
 R.T.: 8.673 min  
 Delta R.T.: -0.002 min  
 Response: 2397786  
 Conc: 46.38 ng/ml



#26 AR-1254-1

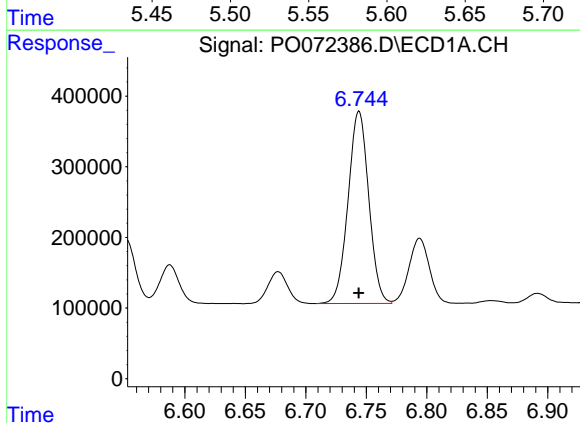
R.T.: 6.516 min  
 Delta R.T.: 0.000 min  
 Response: 1979724  
 Conc: 468.64 ng/ml

Instrument :  
 ECD\_O  
 ClientSampleId :  
 AR1254CCC500



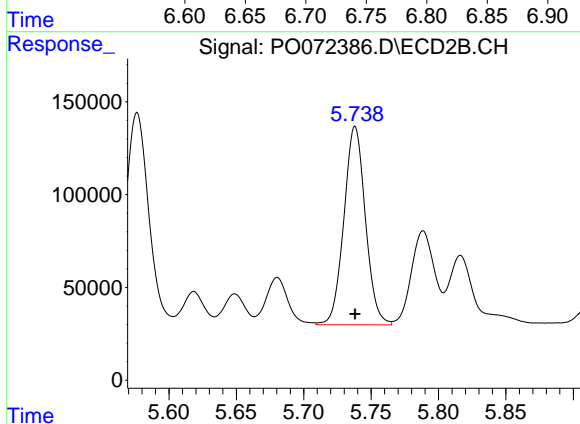
#26 AR-1254-1

R.T.: 5.576 min  
 Delta R.T.: -0.001 min  
 Response: 1368969  
 Conc: 495.25 ng/ml



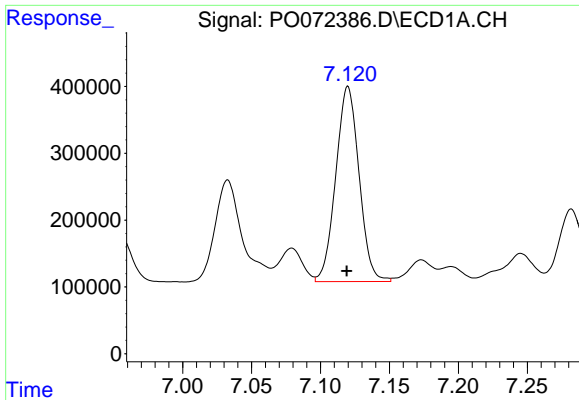
#27 AR-1254-2

R.T.: 6.744 min  
 Delta R.T.: 0.000 min  
 Response: 3243251  
 Conc: 500.43 ng/ml



#27 AR-1254-2

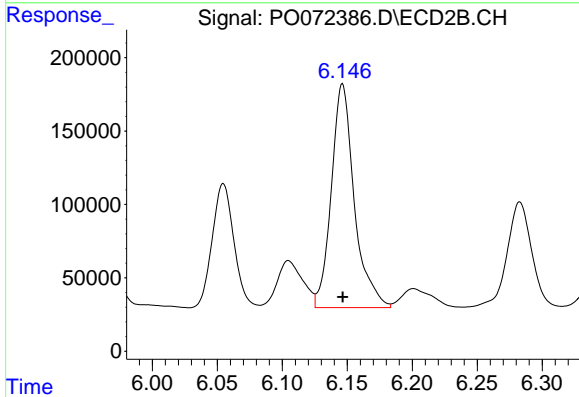
R.T.: 5.738 min  
 Delta R.T.: 0.000 min  
 Response: 1191787  
 Conc: 490.19 ng/ml



#28 AR-1254-3

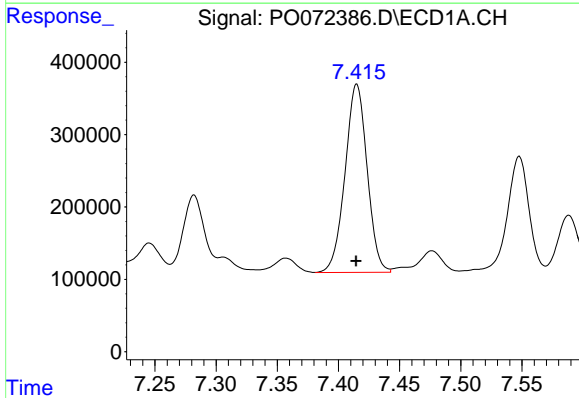
R.T.: 7.120 min  
 Delta R.T.: 0.000 min  
 Response: 3433905  
 Conc: 505.23 ng/ml

Instrument :  
 ECD\_O  
 ClientSampleId :  
 AR1254CCC500



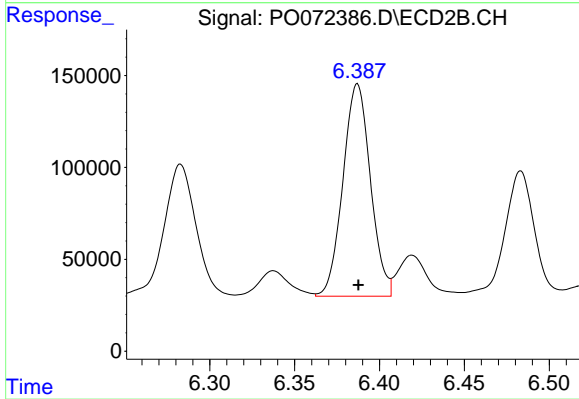
#28 AR-1254-3

R.T.: 6.146 min  
 Delta R.T.: 0.000 min  
 Response: 1876006  
 Conc: 487.52 ng/ml



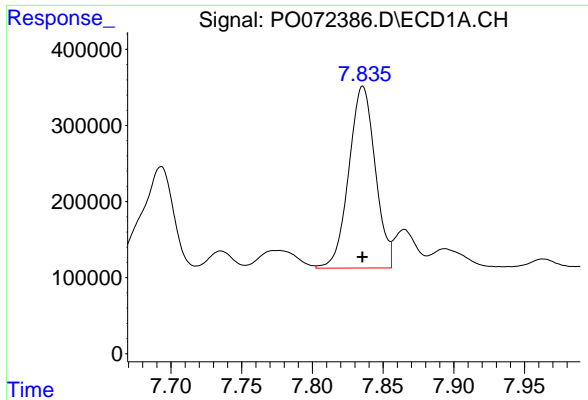
#29 AR-1254-4

R.T.: 7.415 min  
 Delta R.T.: 0.000 min  
 Response: 3269437  
 Conc: 493.26 ng/ml



#29 AR-1254-4

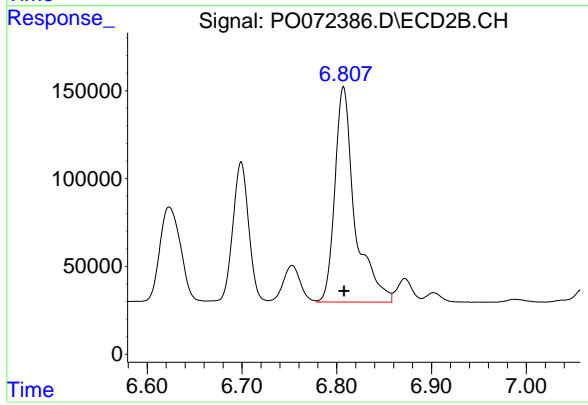
R.T.: 6.387 min  
 Delta R.T.: 0.000 min  
 Response: 1303948  
 Conc: 485.60 ng/ml



#30 AR-1254-5

R.T.: 7.836 min  
Delta R.T.: 0.000 min  
Response: 3102185  
Conc: 484.28 ng/ml

Instrument :  
ECD\_O  
ClientSampleId :  
AR1254CCC500



#30 AR-1254-5

R.T.: 6.807 min  
Delta R.T.: 0.000 min  
Response: 1796379  
Conc: 490.18 ng/ml