

Data Path : Z:\pestpcbsrv\HPCHEM1\ECD\_0\Data\PO101618\  
 Data File : PO050075.D  
 Signal(s) : Signal #1: ECD1A.CH Signal #2: ECD2B.CH  
 Acq On : 16 Oct 2018 11:37  
 Operator : SM/SJ  
 Sample : AR1660CCC500  
 Misc :  
 ALS Vial : 3 Sample Multiplier: 1

Instrument :  
 ECD\_0  
 ClientSampled :  
 AR1660CCC500

Integration File signal 1: autoint1.e  
 Integration File signal 2: autoint2.e  
 Quant Time: Oct 16 11:54:14 2018  
 Quant Method : Z:\pestpcbsrv\HPCHEM1\ECD\_0\methods\PO101518.M  
 Quant Title : GC EXTRACTABLES  
 QLast Update : Mon Oct 15 16:37:53 2018  
 Response via : Initial Calibration  
 Integrator: ChemStation 6890 Scale Mode: Small noise peaks clipped

Volume Inj. : 2 µl  
 Signal #1 Phase : ZB-MR1 Signal #2 Phase: ZB-MR2  
 Signal #1 Info : 30Mx0.32mmx 0.50µ Signal #2 Info : 30M x 0.32mm x 0.25µm

Compound	RT#1	RT#2	Resp#1	Resp#2	ng/ml	ng/ml
System Monitoring Compounds						
1) SA Tetrachlo...	4.330	3.363	9889644	9112725	40.145	46.511
2) SA Decachlor...	10.074	8.123	390344	9841710	2.074	57.231 #
Target Compounds						
3) L1 AR-1016-1	5.505	4.384	4318291	3460779	411.417	481.634
4) L1 AR-1016-2	5.528	4.400	6274369	5758423	408.301	473.753
5) L1 AR-1016-3	5.590	4.565	4010271	2975412	421.529	484.984
6) L1 AR-1016-4	5.689	4.608	3380947	2418527	427.856	492.479
7) L1 AR-1016-5	5.986	4.806	3378454	3003612	440.247	454.947
8) L2 AR-1221-1	4.628	3.567	549505	308760	201.569	153.127
9) L2 AR-1221-2	4.628	3.646	549505	476089	268.889	318.786
10) L2 AR-1221-3	4.704	3.718	2118896	1882727	333.211	380.807
11) L3 AR-1232-1	4.704	3.718	2118896	1882727	449.817	527.512
12) L3 AR-1232-2	5.235	4.400	3165039	5758423	1221.132	1353.072
13) L3 AR-1232-3	5.528	4.565	6274369	2975412	1218.379	1491.557
14) L3 AR-1232-4	5.689	4.646	3380947	2940704	1313.417	1625.036
15) L3 AR-1232-5	5.781	4.806	2924253	3003612	1608.339	1456.941
16) L4 AR-1242-1	5.528	4.384	6274369	3460779	923.833	727.762
17) L4 AR-1242-2	5.528	4.400	6274369	5758423	624.924	724.406
18) L4 AR-1242-3	5.590	4.565	4010271	2975412	637.908	739.904
19) L4 AR-1242-4	5.689	4.646	3380947	2940704	656.828	707.574
20) L4 AR-1242-5	6.432	5.141	1035675	3285491	186.474	695.904 #
21) L5 AR-1248-1	5.528	4.384	6274369	3460779	1145.471	881.347
22) L5 AR-1248-2	5.781	4.608	2924253	2418527	366.132	398.980
23) L5 AR-1248-3	5.986	4.646	3378454	2940704	376.178	483.081 #
24) L5 AR-1248-4	6.394	4.806	1246162	3003612	130.751	400.824 #
25) L5 AR-1248-5	6.432	5.179	1035675	801337	112.899	114.976
26) L6 AR-1254-1	6.366	5.141	3222537	3285491	271.446	245.362
27) L6 AR-1254-2	6.587	5.284	2695579	2386087	145.612	196.510 #
28) L6 AR-1254-3	6.958	5.684	1464927	4844423	75.572	242.327 #
29) L6 AR-1254-4	7.246	5.889	991116	418061	73.904	38.538 #
30) L6 AR-1254-5	7.670	6.291	8883404	9710156	592.537	569.078
31) L7 AR-1260-1	7.124	5.794	6813866	7002169	426.920	487.340
32) L7 AR-1260-2	7.385	5.977	7619809	8577398	410.323	503.270
33) L7 AR-1260-3	7.748	6.122	5565174	8154826	418.264	504.163
34) L7 AR-1260-4	7.976	6.580	6422391	6666711	419.783	527.740 #
35) L7 AR-1260-5	8.295	6.817	11768737	15559044	431.444	558.905 #
36) L8 AR-1262-1	7.748	6.330	5565174	7049137	377.319	469.908
37) L8 AR-1262-2	8.295	6.817	11768737	15559044	511.819	648.814 #
38) L8 AR-1262-3	8.615	7.094	7563032	3140369	480.246	322.801 #
39) L8 AR-1262-4	8.672	7.154	4607379	11050155	369.794	622.908 #
40) L8 AR-1262-5	9.338	7.640	2968375	3552274	417.660	512.589
41) L9 AR-1268-1	8.615	7.094	7563032	3140369	258.049	104.276 #

Data Path : Z:\pestpcbsrv\HPCHEM1\ECD\_0\Data\PO101618\  
 Data File : PO050075.D  
 Signal(s) : Signal #1: ECD1A.CH Signal #2: ECD2B.CH  
 Acq On : 16 Oct 2018 11:37  
 Operator : SM/SJ  
 Sample : AR1660CCC500  
 Misc :  
 ALS Vial : 3 Sample Multiplier: 1

Instrument :  
 ECD\_0  
 ClientSampleId :  
 AR1660CCC500

Integration File signal 1: autoint1.e  
 Integration File signal 2: autoint2.e  
 Quant Time: Oct 16 11:54:14 2018  
 Quant Method : Z:\pestpcbsrv\HPCHEM1\ECD\_0\methods\PO101518.M  
 Quant Title : GC EXTRACTABLES  
 QLast Update : Mon Oct 15 16:37:53 2018  
 Response via : Initial Calibration  
 Integrator: ChemStation 6890 Scale Mode: Small noise peaks clipped

Volume Inj. : 2 µl  
 Signal #1 Phase : ZB-MR1 Signal #2 Phase: ZB-MR2  
 Signal #1 Info : 30Mx0.32mmx 0.50µ Signal #2 Info : 30M x 0.32mm x 0.25µm

	Compound	RT#1	RT#2	Resp#1	Resp#2	ng/ml	ng/ml
42)	L9 AR-1268-2	8.672	7.154	4607379	11050155	170.125	392.582 #
43)	L9 AR-1268-3	0.000	7.356	0	198492	N.D.	8.384 #
44)	L9 AR-1268-4	9.338	7.640	2968375	3552274	350.395	424.284
45)	L9 AR-1268-5	9.744	7.906	700773	883003	10.596	16.225 #

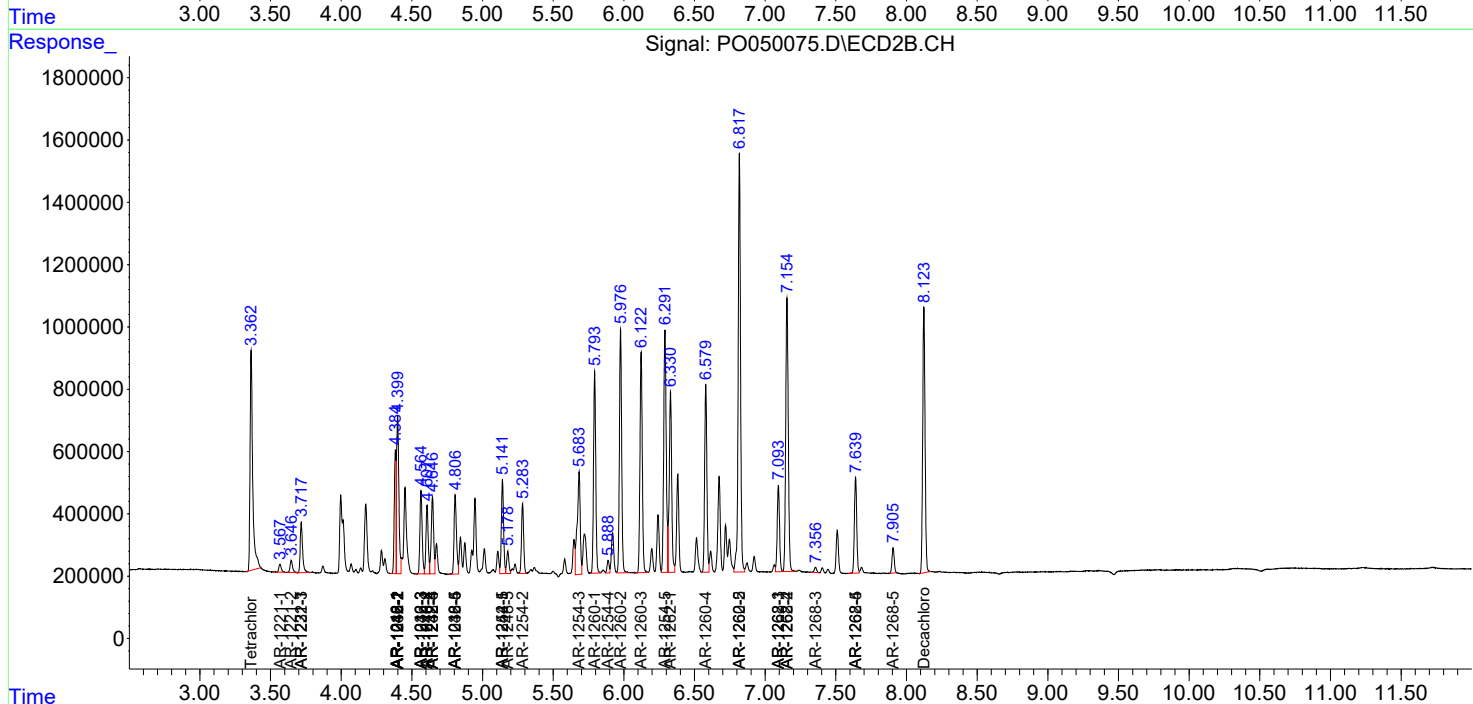
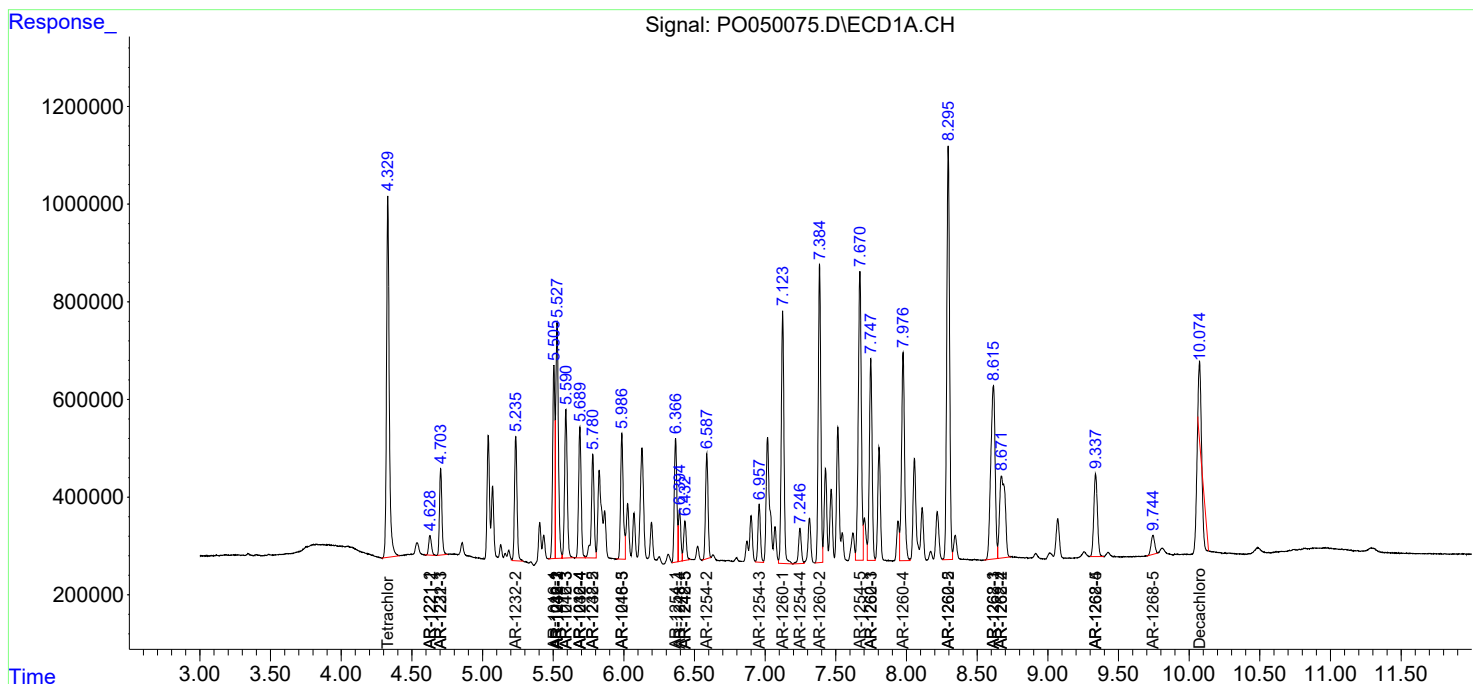
(f)=RT Delta > 1/2 Window (#)=Amounts differ by > 25% (m)=manual int.

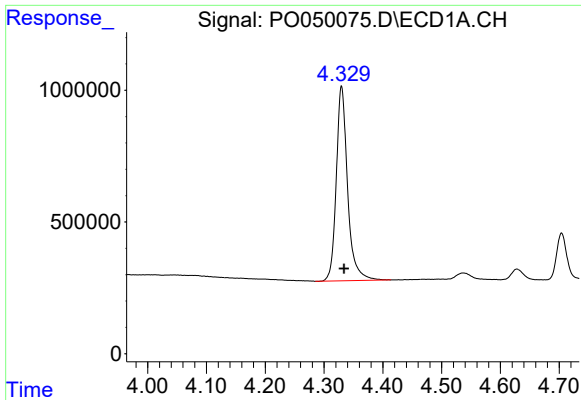
Data Path : Z:\pestpcbsrv\HPCHEM1\ECD\_O\Data\PO101618\  
 Data File : PO050075.D  
 Signal(s) : Signal #1: ECD1A.CH Signal #2: ECD2B.CH  
 Acq On : 16 Oct 2018 11:37  
 Operator : SM/SJ  
 Sample : AR1660CCC500  
 Misc :  
 ALS Vial : 3 Sample Multiplier: 1

Instrument :  
 ECD\_O  
 ClientSampled :  
 AR1660CCC500

Integration File signal 1: autoint1.e  
 Integration File signal 2: autoint2.e  
 Quant Time: Oct 16 11:54:14 2018  
 Quant Method : Z:\pestpcbsrv\HPCHEM1\ECD\_O\methods\PO101518.M  
 Quant Title : GC EXTRACTABLES  
 QLast Update : Mon Oct 15 16:37:53 2018  
 Response via : Initial Calibration  
 Integrator: ChemStation 6890 Scale Mode: Small noise peaks clipped

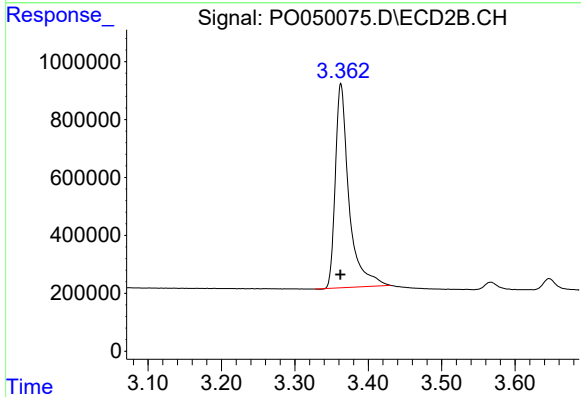
Volume Inj. : 2 µl  
 Signal #1 Phase : ZB-MR1 Signal #2 Phase: ZB-MR2  
 Signal #1 Info : 30Mx0.32mmx 0.50µ Signal #2 Info : 30M x 0.32mm x 0.25µm



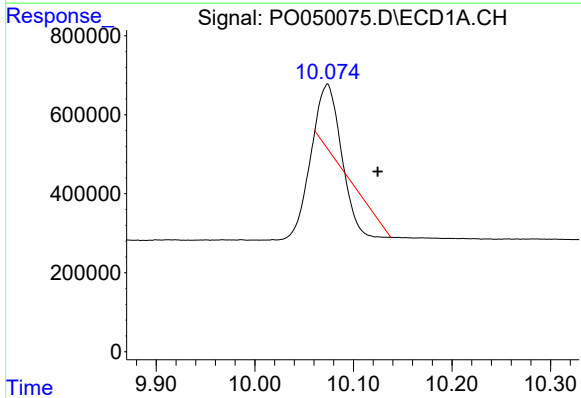


#1 Tetrachloro-m-xylene  
 R.T.: 4.330 min  
 Delta R.T.: -0.004 min  
 Response: 9889644  
 Conc: 40.15 ng/ml

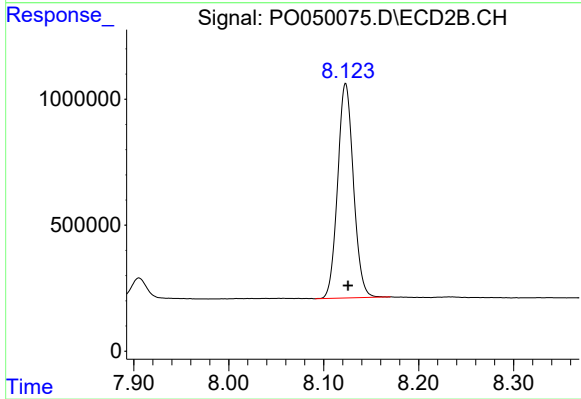
Instrument :  
 ECD\_O  
 ClientSampleId :  
 AR1660CCC500



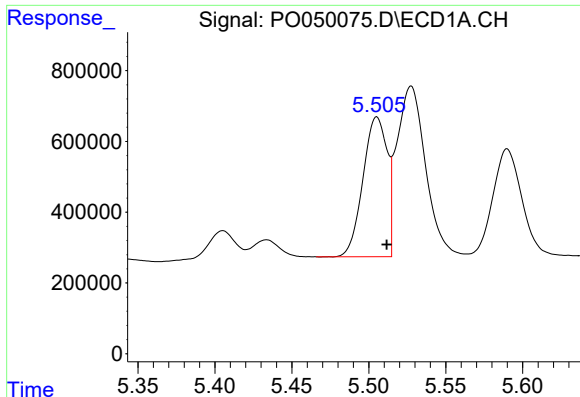
#1 Tetrachloro-m-xylene  
 R.T.: 3.363 min  
 Delta R.T.: 0.000 min  
 Response: 9112725  
 Conc: 46.51 ng/ml



#2 Decachlorobiphenyl  
 R.T.: 10.074 min  
 Delta R.T.: -0.051 min  
 Response: 390344  
 Conc: 2.07 ng/ml



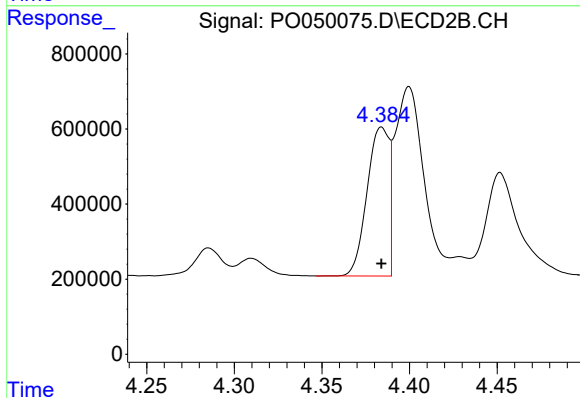
#2 Decachlorobiphenyl  
 R.T.: 8.123 min  
 Delta R.T.: -0.002 min  
 Response: 9841710  
 Conc: 57.23 ng/ml



#3 AR-1016-1

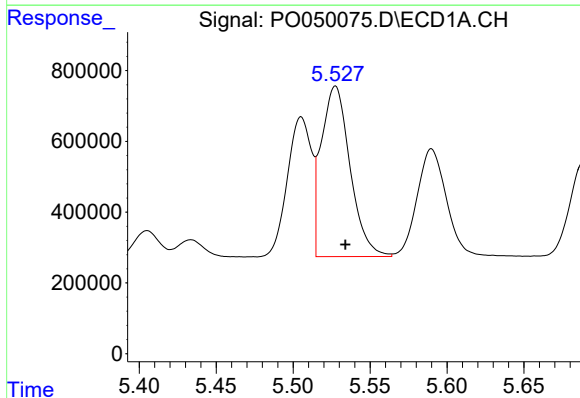
R.T.: 5.505 min  
 Delta R.T.: -0.006 min  
 Response: 4318291  
 Conc: 411.42 ng/ml

Instrument :  
 ECD\_O  
 ClientSampled :  
 AR1660CCC500



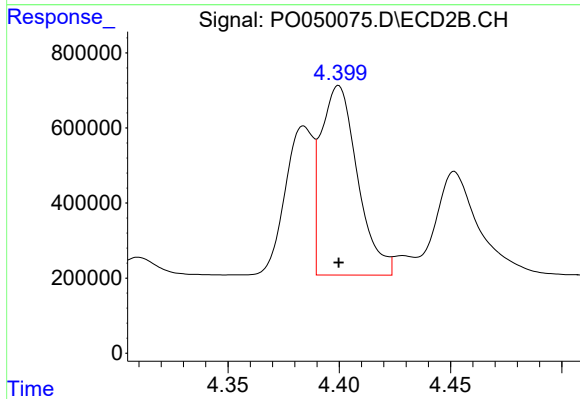
#3 AR-1016-1

R.T.: 4.384 min  
 Delta R.T.: 0.000 min  
 Response: 3460779  
 Conc: 481.63 ng/ml



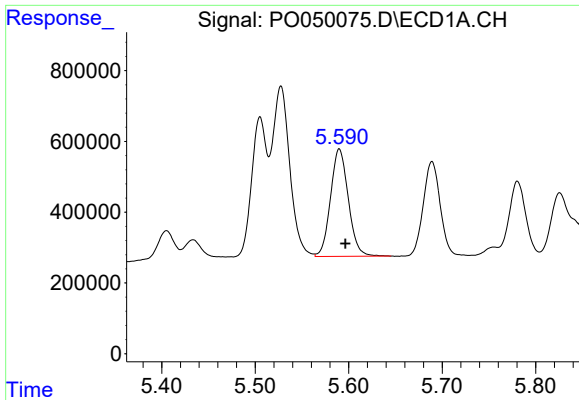
#4 AR-1016-2

R.T.: 5.528 min  
 Delta R.T.: -0.007 min  
 Response: 6274369  
 Conc: 408.30 ng/ml



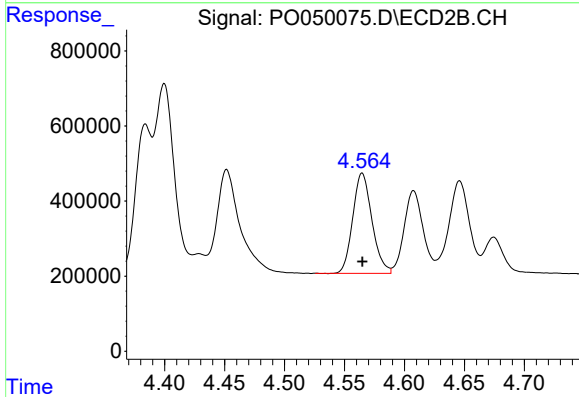
#4 AR-1016-2

R.T.: 4.400 min  
 Delta R.T.: 0.000 min  
 Response: 5758423  
 Conc: 473.75 ng/ml

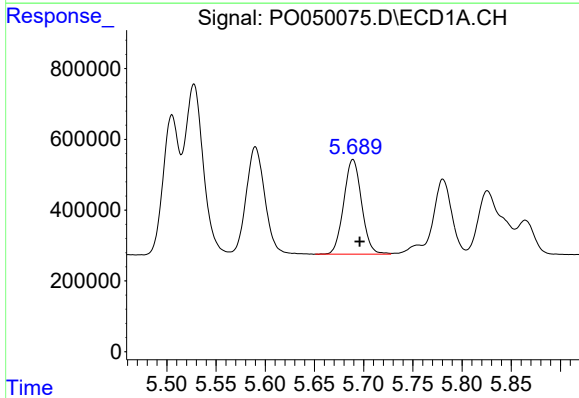


#5 AR-1016-3  
 R.T.: 5.590 min  
 Delta R.T.: -0.007 min  
 Response: 4010271  
 Conc: 421.53 ng/ml

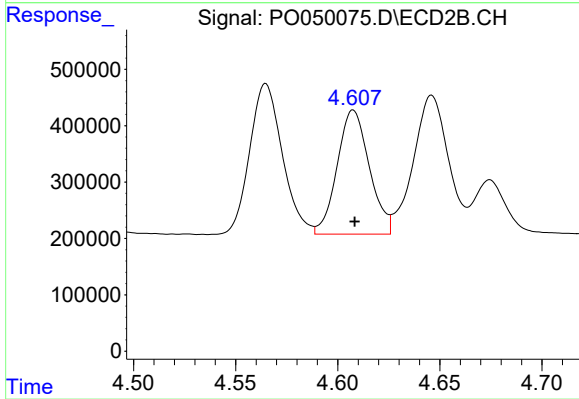
**Instrument :**  
 ECD\_O  
**ClientSampled :**  
 AR1660CCC500



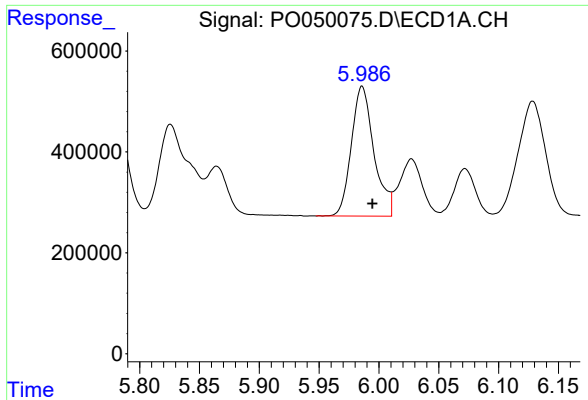
#5 AR-1016-3  
 R.T.: 4.565 min  
 Delta R.T.: 0.000 min  
 Response: 2975412  
 Conc: 484.98 ng/ml



#6 AR-1016-4  
 R.T.: 5.689 min  
 Delta R.T.: -0.007 min  
 Response: 3380947  
 Conc: 427.86 ng/ml

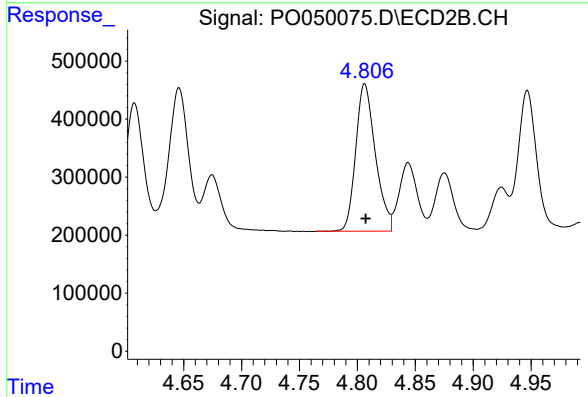


#6 AR-1016-4  
 R.T.: 4.608 min  
 Delta R.T.: 0.000 min  
 Response: 2418527  
 Conc: 492.48 ng/ml

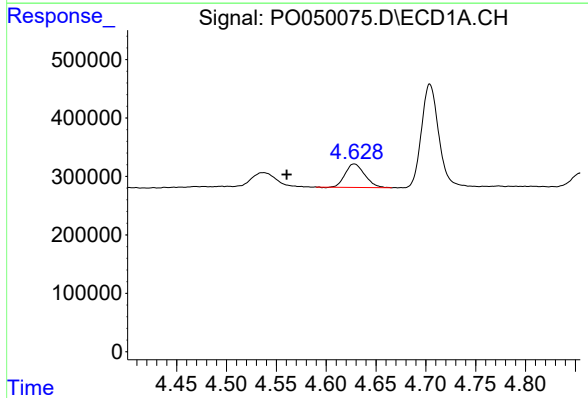


#7 AR-1016-5  
 R.T.: 5.986 min  
 Delta R.T.: -0.009 min  
 Response: 3378454  
 Conc: 440.25 ng/ml

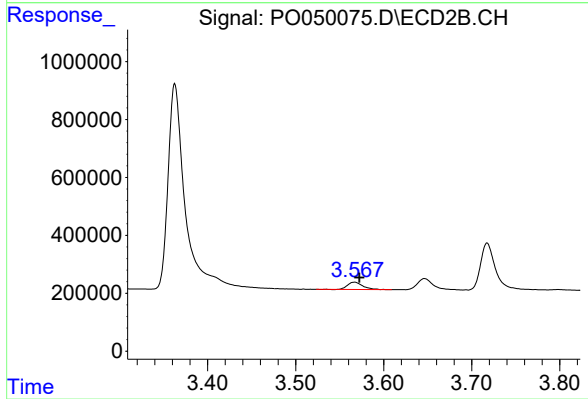
**Instrument :**  
 ECD\_O  
**ClientSampled :**  
 AR1660CCC500



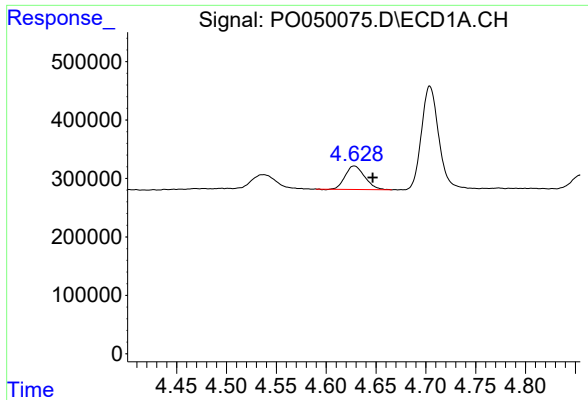
#7 AR-1016-5  
 R.T.: 4.806 min  
 Delta R.T.: 0.000 min  
 Response: 3003612  
 Conc: 454.95 ng/ml



#8 AR-1221-1  
 R.T.: 4.628 min  
 Delta R.T.: 0.068 min  
 Response: 549505  
 Conc: 201.57 ng/ml

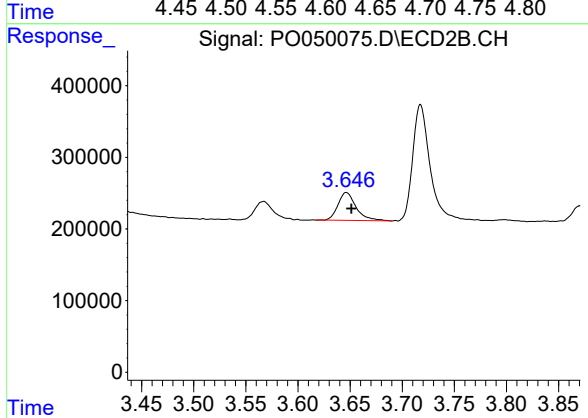


#8 AR-1221-1  
 R.T.: 3.567 min  
 Delta R.T.: -0.005 min  
 Response: 308760  
 Conc: 153.13 ng/ml

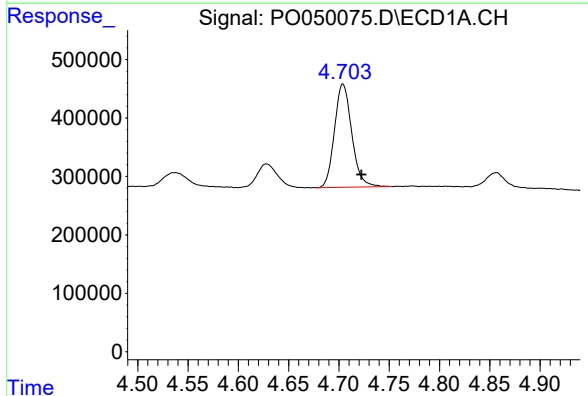


#9 AR-1221-2  
 R.T.: 4.628 min  
 Delta R.T.: -0.018 min  
 Response: 549505  
 Conc: 268.89 ng/ml

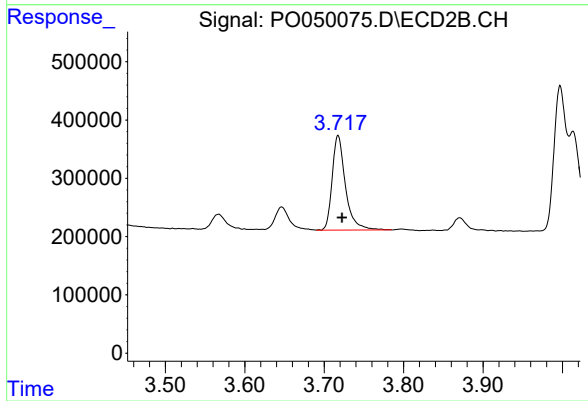
Instrument :  
 ECD\_O  
 ClientSampleId :  
 AR1660CCC500



#9 AR-1221-2  
 R.T.: 3.646 min  
 Delta R.T.: -0.005 min  
 Response: 476089  
 Conc: 318.79 ng/ml

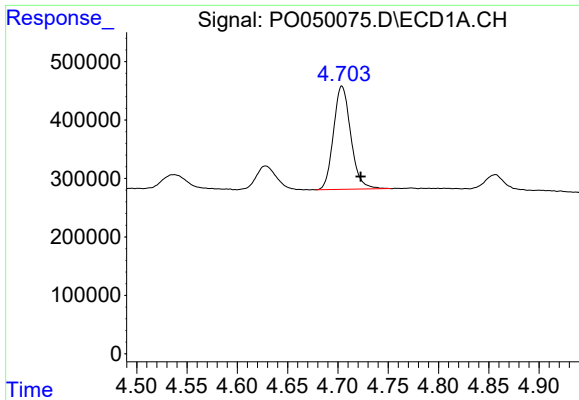


#10 AR-1221-3  
 R.T.: 4.704 min  
 Delta R.T.: -0.019 min  
 Response: 2118896  
 Conc: 333.21 ng/ml



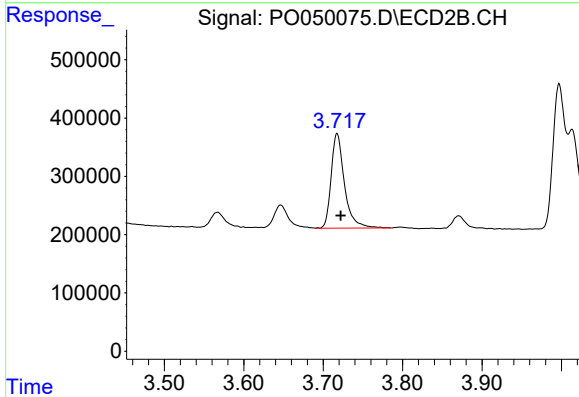
#10 AR-1221-3  
 R.T.: 3.718 min  
 Delta R.T.: -0.005 min  
 Response: 1882727  
 Conc: 380.81 ng/ml



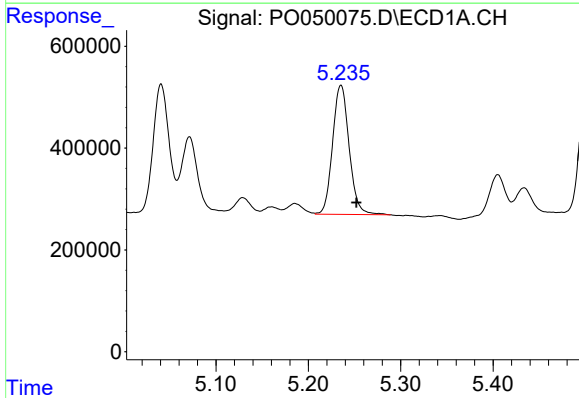


#11 AR-1232-1  
 R.T.: 4.704 min  
 Delta R.T.: -0.019 min  
 Response: 2118896  
 Conc: 449.82 ng/ml

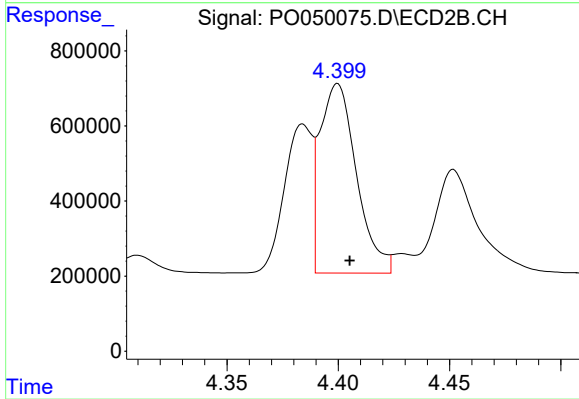
Instrument :  
 ECD\_O  
 ClientSampleId :  
 AR1660CCC500



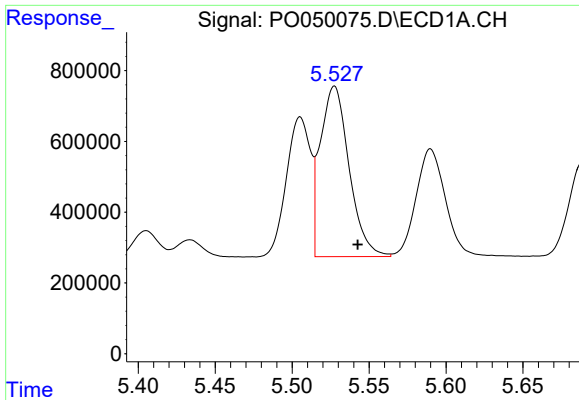
#11 AR-1232-1  
 R.T.: 3.718 min  
 Delta R.T.: -0.005 min  
 Response: 1882727  
 Conc: 527.51 ng/ml



#12 AR-1232-2  
 R.T.: 5.235 min  
 Delta R.T.: -0.017 min  
 Response: 3165039  
 Conc: 1221.13 ng/ml



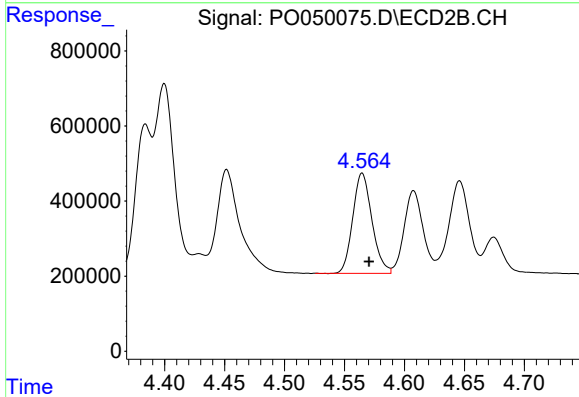
#12 AR-1232-2  
 R.T.: 4.400 min  
 Delta R.T.: -0.006 min  
 Response: 5758423  
 Conc: 1353.07 ng/ml



#13 AR-1232-3

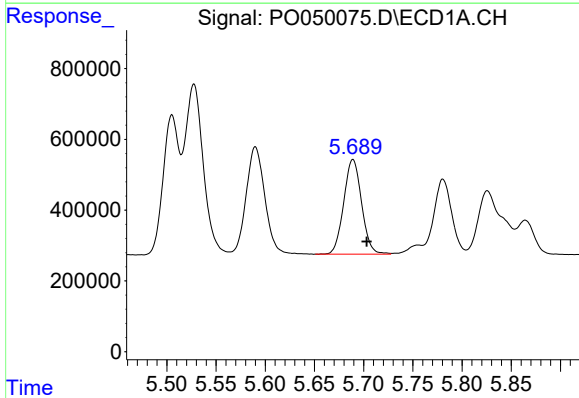
R.T.: 5.528 min  
 Delta R.T.: -0.015 min  
 Response: 6274369  
 Conc: 1218.38 ng/ml

Instrument :  
 ECD\_O  
 ClientSampleId :  
 AR1660CCC500



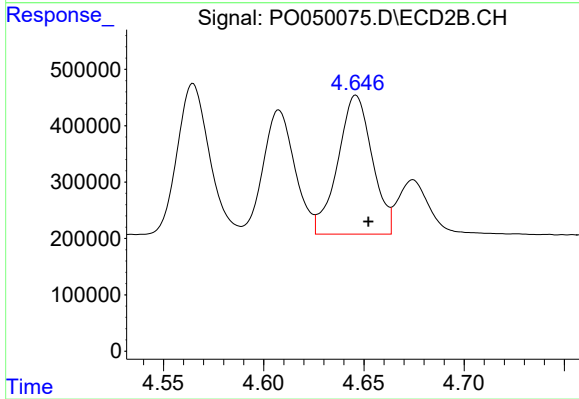
#13 AR-1232-3

R.T.: 4.565 min  
 Delta R.T.: -0.006 min  
 Response: 2975412  
 Conc: 1491.56 ng/ml



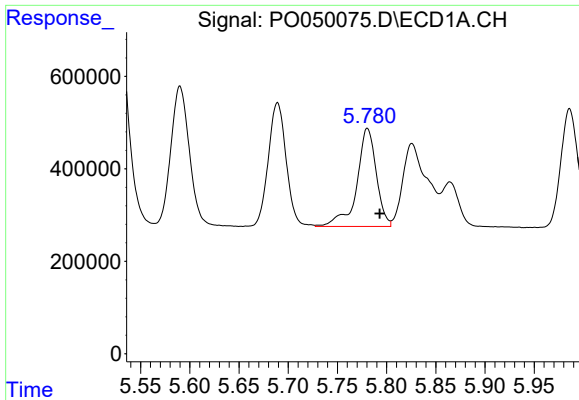
#14 AR-1232-4

R.T.: 5.689 min  
 Delta R.T.: -0.014 min  
 Response: 3380947  
 Conc: 1313.42 ng/ml



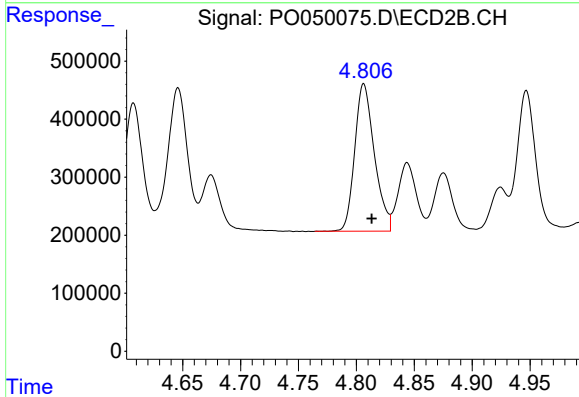
#14 AR-1232-4

R.T.: 4.646 min  
 Delta R.T.: -0.006 min  
 Response: 2940704  
 Conc: 1625.04 ng/ml

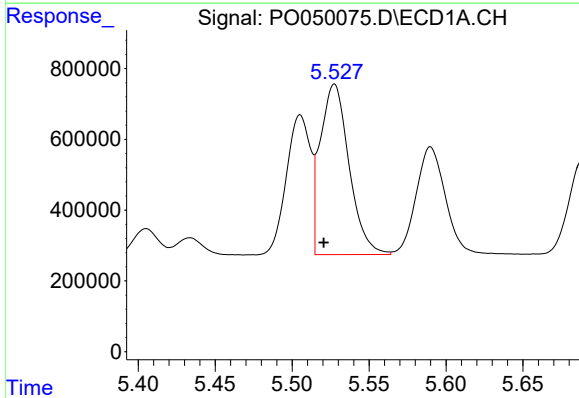


#15 AR-1232-5  
 R.T.: 5.781 min  
 Delta R.T.: -0.012 min  
 Response: 2924253  
 Conc: 1608.34 ng/ml

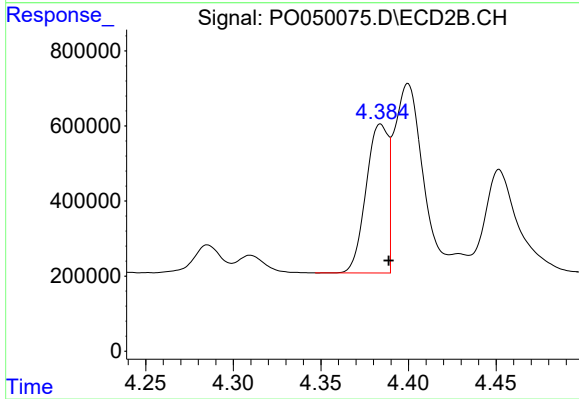
**Instrument :**  
 ECD\_O  
**ClientSampleId :**  
 AR1660CCC500



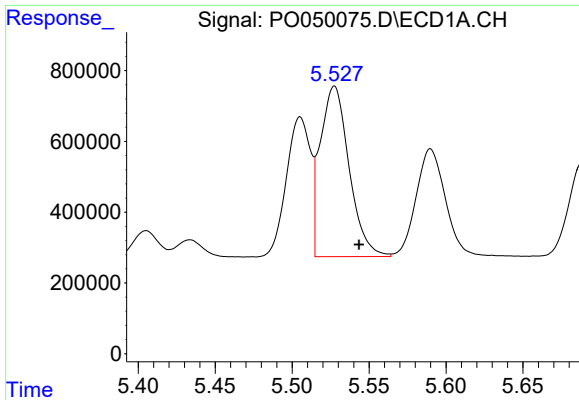
#15 AR-1232-5  
 R.T.: 4.806 min  
 Delta R.T.: -0.007 min  
 Response: 3003612  
 Conc: 1456.94 ng/ml



#16 AR-1242-1  
 R.T.: 5.528 min  
 Delta R.T.: 0.007 min  
 Response: 6274369  
 Conc: 923.83 ng/ml



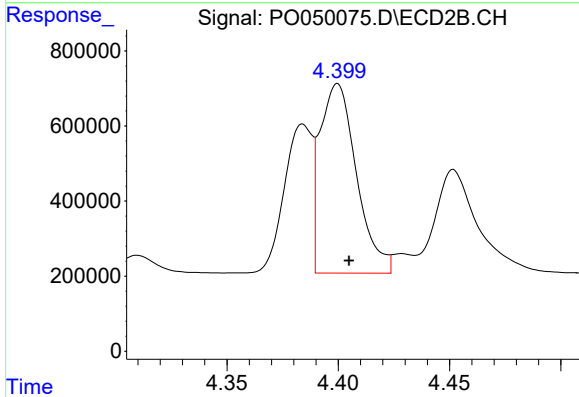
#16 AR-1242-1  
 R.T.: 4.384 min  
 Delta R.T.: -0.005 min  
 Response: 3460779  
 Conc: 727.76 ng/ml



#17 AR-1242-2

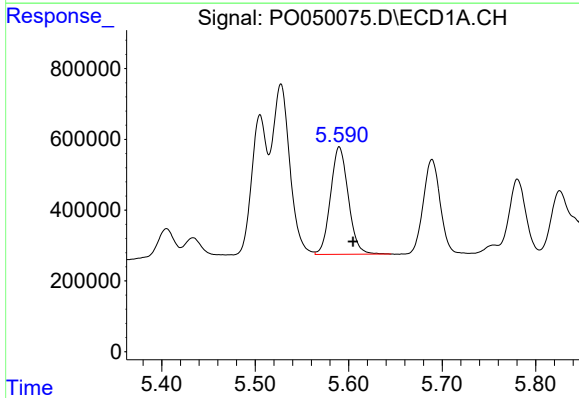
R.T.: 5.528 min  
 Delta R.T.: -0.016 min  
 Response: 6274369  
 Conc: 624.92 ng/ml

Instrument :  
 ECD\_O  
 ClientSampleId :  
 AR1660CCC500



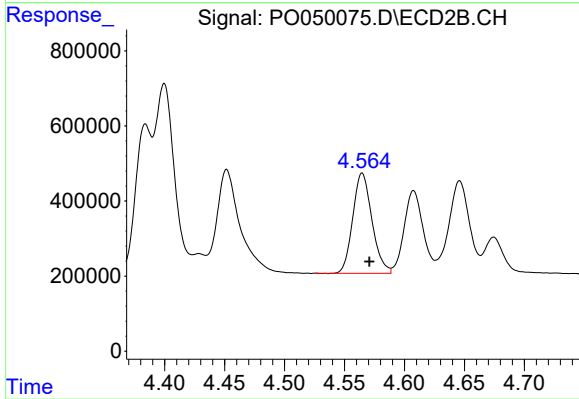
#17 AR-1242-2

R.T.: 4.400 min  
 Delta R.T.: -0.005 min  
 Response: 5758423  
 Conc: 724.41 ng/ml



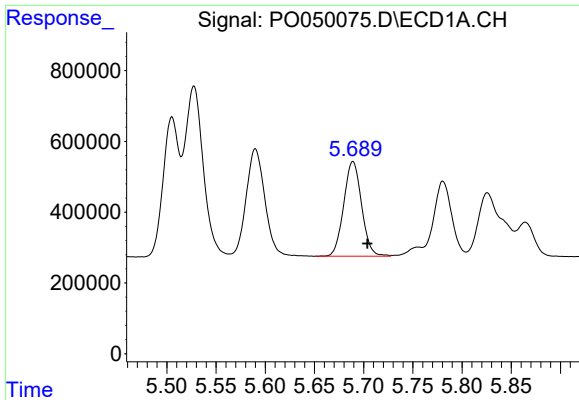
#18 AR-1242-3

R.T.: 5.590 min  
 Delta R.T.: -0.015 min  
 Response: 4010271  
 Conc: 637.91 ng/ml



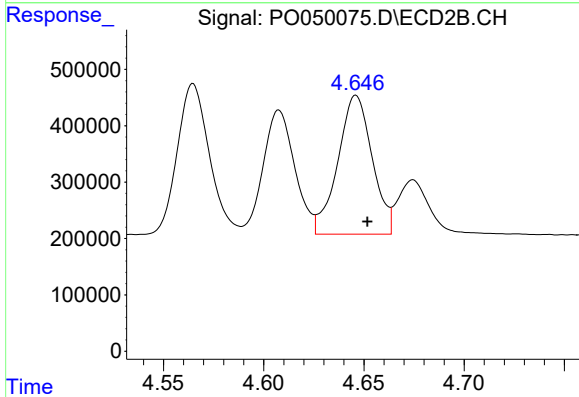
#18 AR-1242-3

R.T.: 4.565 min  
 Delta R.T.: -0.006 min  
 Response: 2975412  
 Conc: 739.90 ng/ml

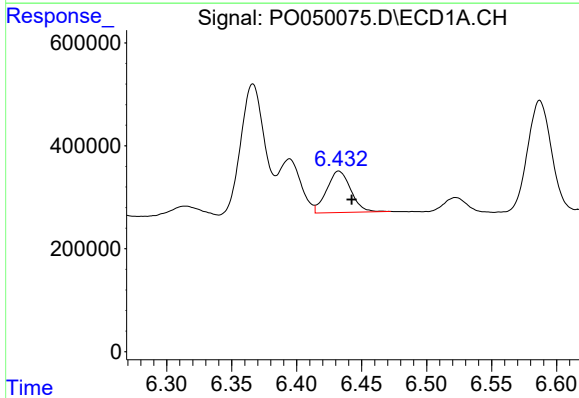


#19 AR-1242-4  
 R.T.: 5.689 min  
 Delta R.T.: -0.015 min  
 Response: 3380947  
 Conc: 656.83 ng/ml

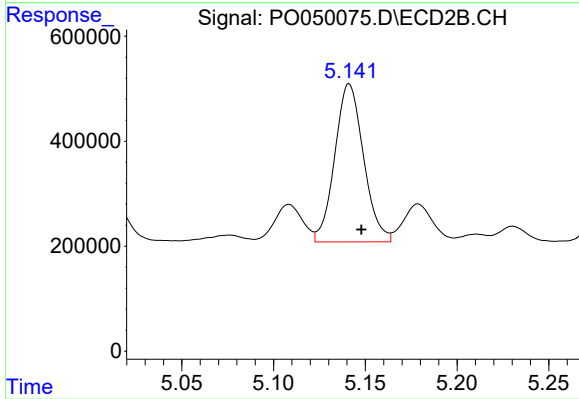
**Instrument :**  
 ECD\_O  
**ClientSampleId :**  
 AR1660CCC500



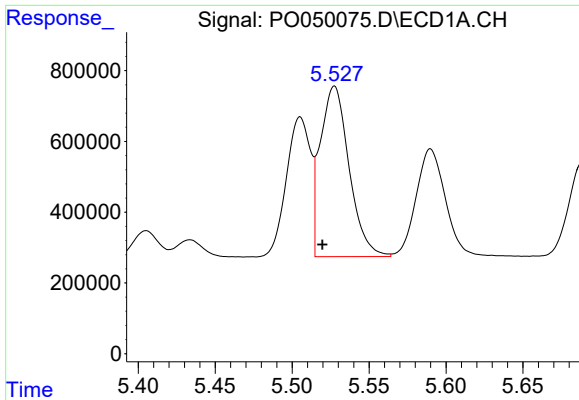
#19 AR-1242-4  
 R.T.: 4.646 min  
 Delta R.T.: -0.006 min  
 Response: 2940704  
 Conc: 707.57 ng/ml



#20 AR-1242-5  
 R.T.: 6.432 min  
 Delta R.T.: -0.010 min  
 Response: 1035675  
 Conc: 186.47 ng/ml

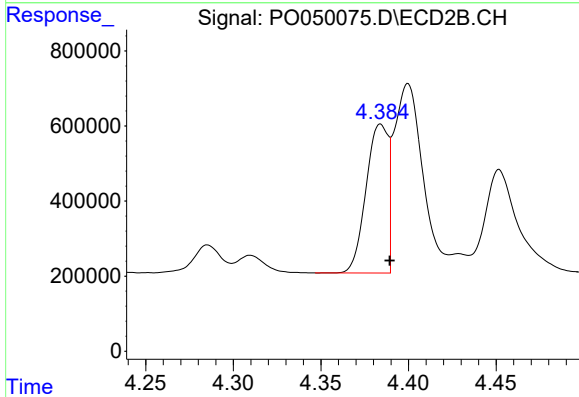


#20 AR-1242-5  
 R.T.: 5.141 min  
 Delta R.T.: -0.007 min  
 Response: 3285491  
 Conc: 695.90 ng/ml

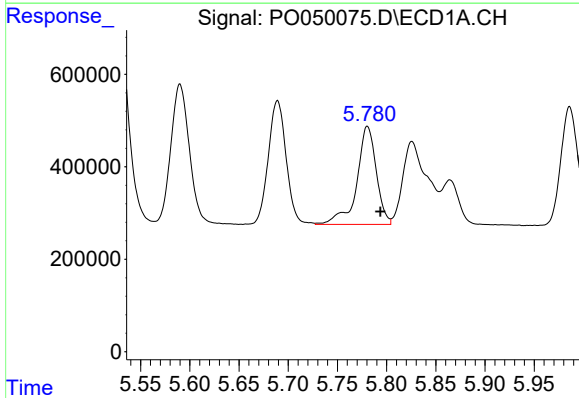


#21 AR-1248-1  
 R.T.: 5.528 min  
 Delta R.T.: 0.008 min  
 Response: 6274369  
 Conc: 1145.47 ng/ml

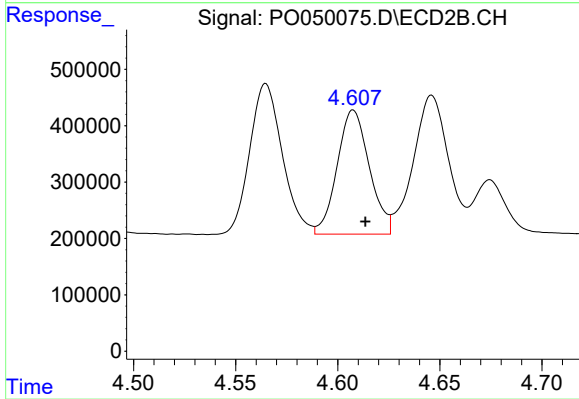
**Instrument :**  
 ECD\_O  
**ClientSampled :**  
 AR1660CCC500



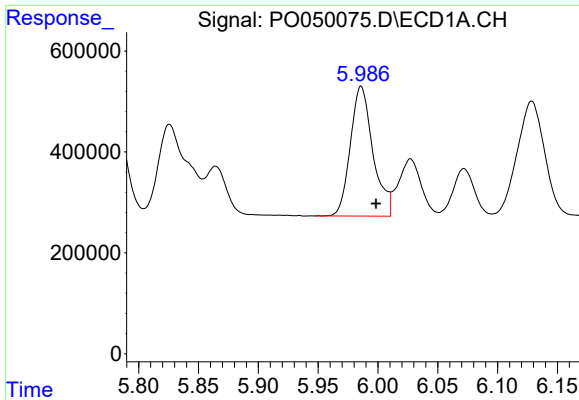
#21 AR-1248-1  
 R.T.: 4.384 min  
 Delta R.T.: -0.005 min  
 Response: 3460779  
 Conc: 881.35 ng/ml



#22 AR-1248-2  
 R.T.: 5.781 min  
 Delta R.T.: -0.013 min  
 Response: 2924253  
 Conc: 366.13 ng/ml



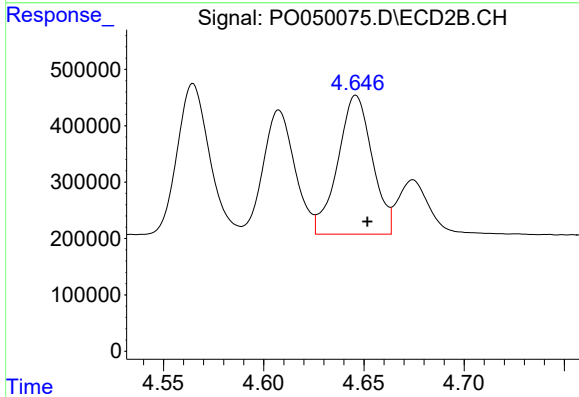
#22 AR-1248-2  
 R.T.: 4.608 min  
 Delta R.T.: -0.006 min  
 Response: 2418527  
 Conc: 398.98 ng/ml



#23 AR-1248-3

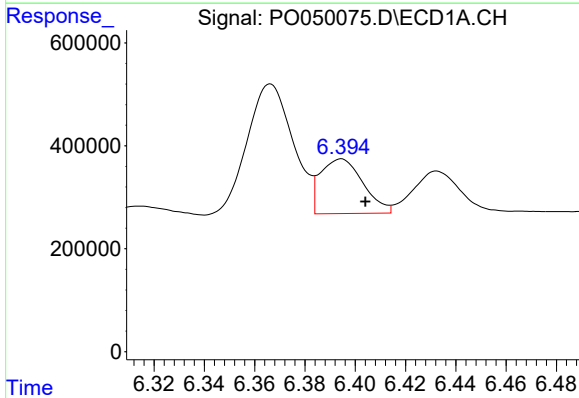
R.T.: 5.986 min  
 Delta R.T.: -0.012 min  
 Response: 3378454  
 Conc: 376.18 ng/ml

Instrument :  
 ECD\_O  
 ClientSampleId :  
 AR1660CCC500



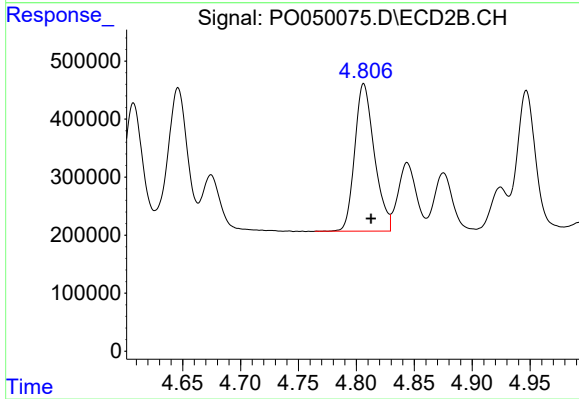
#23 AR-1248-3

R.T.: 4.646 min  
 Delta R.T.: -0.006 min  
 Response: 2940704  
 Conc: 483.08 ng/ml



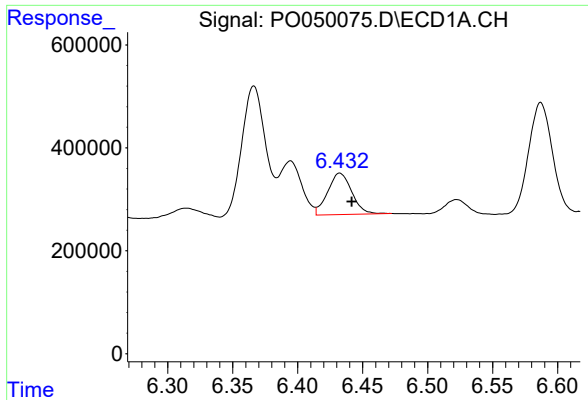
#24 AR-1248-4

R.T.: 6.394 min  
 Delta R.T.: -0.010 min  
 Response: 1246162  
 Conc: 130.75 ng/ml



#24 AR-1248-4

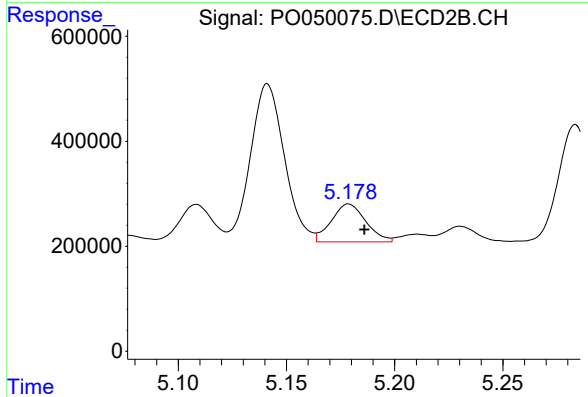
R.T.: 4.806 min  
 Delta R.T.: -0.006 min  
 Response: 3003612  
 Conc: 400.82 ng/ml



#25 AR-1248-5

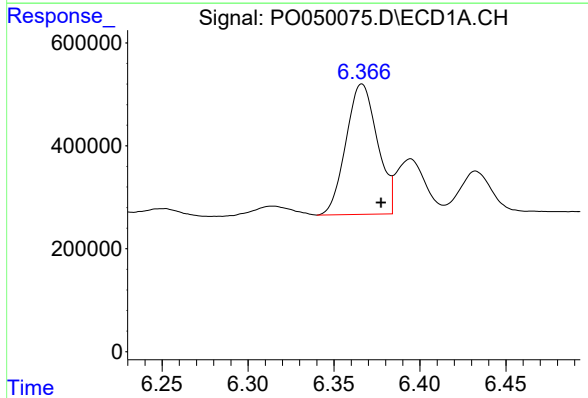
R.T.: 6.432 min  
 Delta R.T.: -0.009 min  
 Response: 1035675  
 Conc: 112.90 ng/ml

Instrument :  
 ECD\_O  
 ClientSampleId :  
 AR1660CCC500



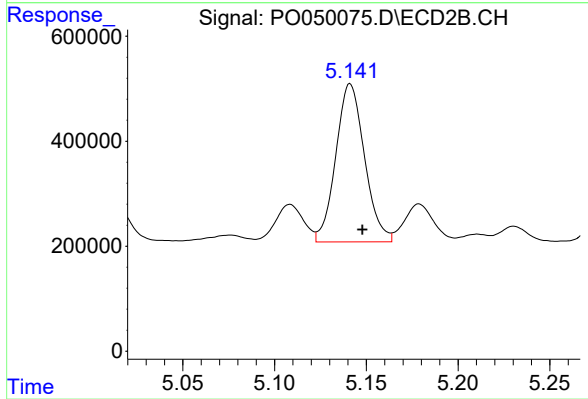
#25 AR-1248-5

R.T.: 5.179 min  
 Delta R.T.: -0.007 min  
 Response: 801337  
 Conc: 114.98 ng/ml



#26 AR-1254-1

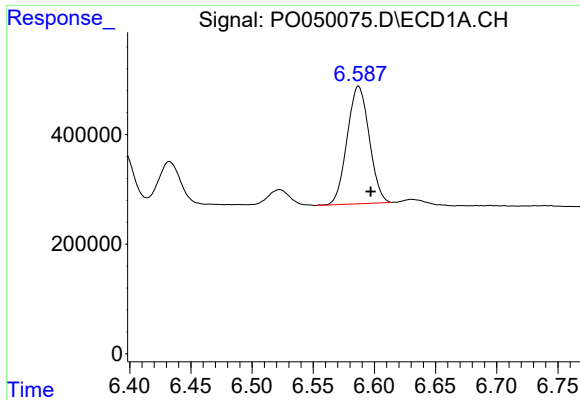
R.T.: 6.366 min  
 Delta R.T.: -0.011 min  
 Response: 3222537  
 Conc: 271.45 ng/ml



#26 AR-1254-1

R.T.: 5.141 min  
 Delta R.T.: -0.007 min  
 Response: 3285491  
 Conc: 245.36 ng/ml

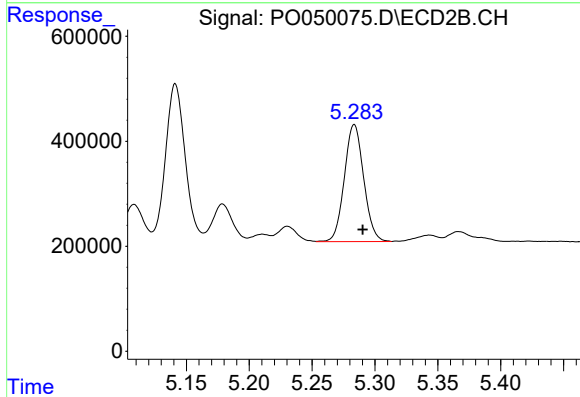




#27 AR-1254-2

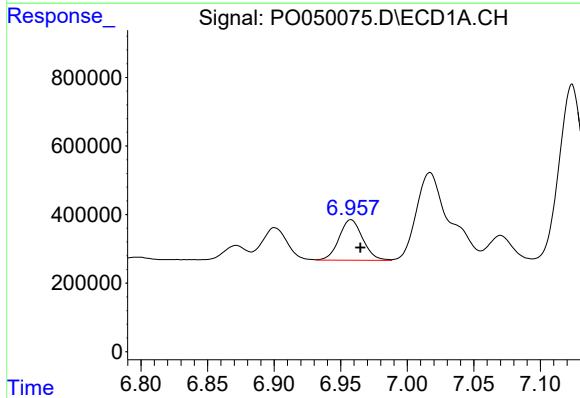
R.T.: 6.587 min  
 Delta R.T.: -0.010 min  
 Response: 2695579  
 Conc: 145.61 ng/ml

Instrument :  
 ECD\_O  
 ClientSampleId :  
 AR1660CCC500



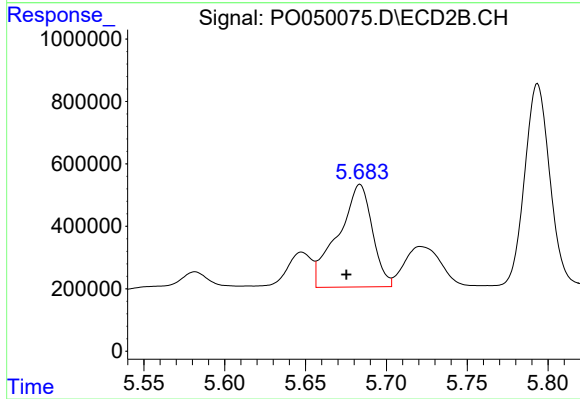
#27 AR-1254-2

R.T.: 5.284 min  
 Delta R.T.: -0.007 min  
 Response: 2386087  
 Conc: 196.51 ng/ml



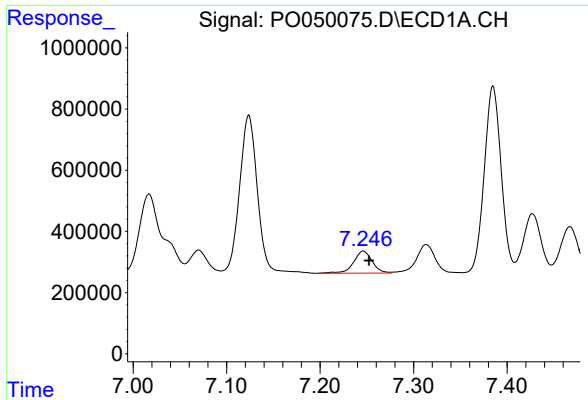
#28 AR-1254-3

R.T.: 6.958 min  
 Delta R.T.: -0.007 min  
 Response: 1464927  
 Conc: 75.57 ng/ml



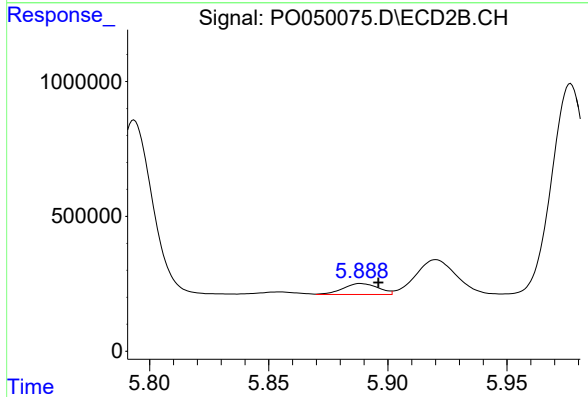
#28 AR-1254-3

R.T.: 5.684 min  
 Delta R.T.: 0.008 min  
 Response: 4844423  
 Conc: 242.33 ng/ml

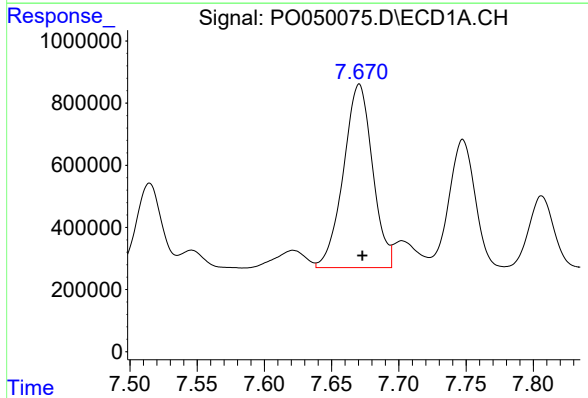


#29 AR-1254-4  
 R.T.: 7.246 min  
 Delta R.T.: -0.006 min  
 Response: 991116  
 Conc: 73.90 ng/ml

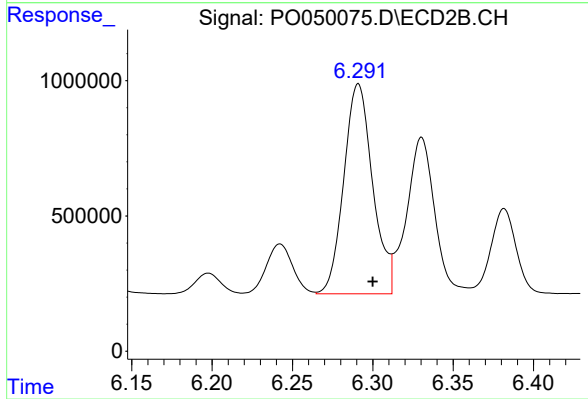
**Instrument :**  
 ECD\_O  
**ClientSampled :**  
 AR1660CCC500



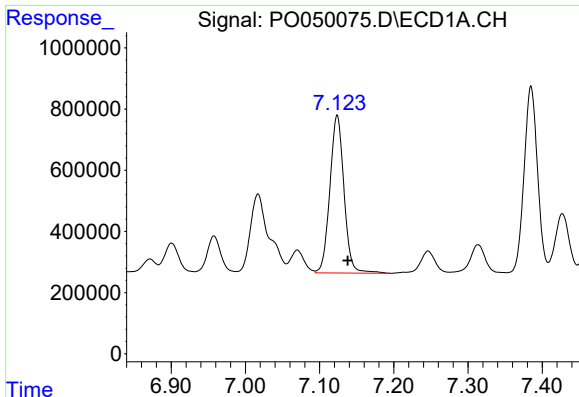
#29 AR-1254-4  
 R.T.: 5.889 min  
 Delta R.T.: -0.007 min  
 Response: 418061  
 Conc: 38.54 ng/ml



#30 AR-1254-5  
 R.T.: 7.670 min  
 Delta R.T.: -0.002 min  
 Response: 8883404  
 Conc: 592.54 ng/ml



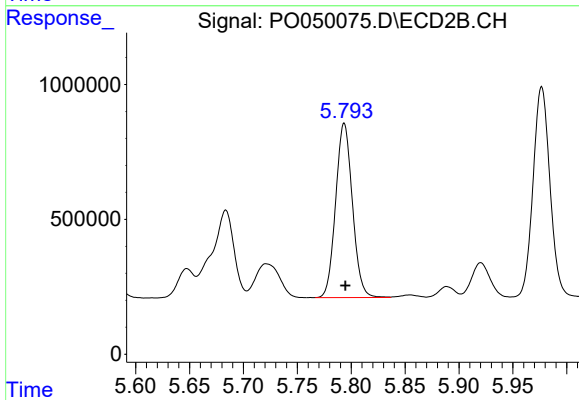
#30 AR-1254-5  
 R.T.: 6.291 min  
 Delta R.T.: -0.009 min  
 Response: 9710156  
 Conc: 569.08 ng/ml



#31 AR-1260-1

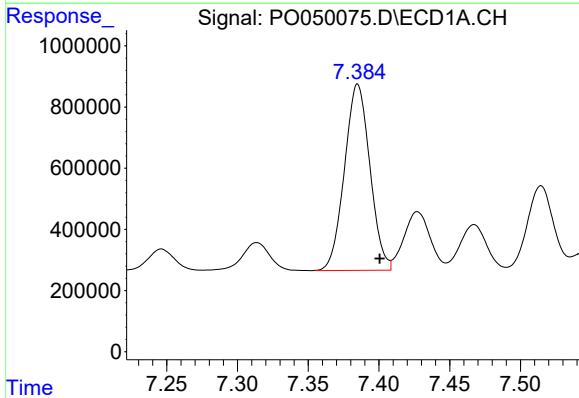
R.T.: 7.124 min  
 Delta R.T.: -0.014 min  
 Response: 6813866  
 Conc: 426.92 ng/ml

Instrument :  
 ECD\_O  
 ClientSampleId :  
 AR1660CCC500



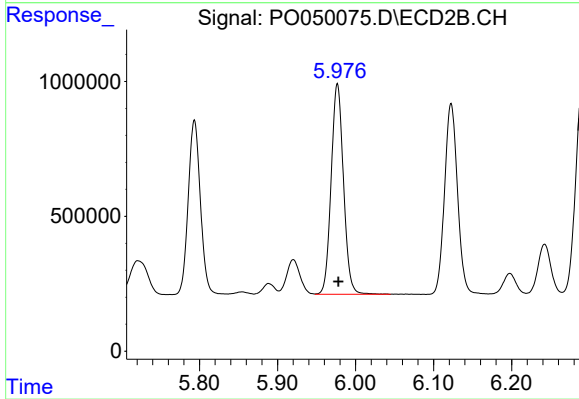
#31 AR-1260-1

R.T.: 5.794 min  
 Delta R.T.: -0.001 min  
 Response: 7002169  
 Conc: 487.34 ng/ml



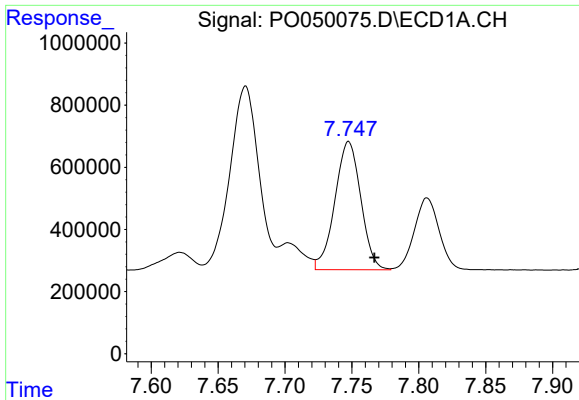
#32 AR-1260-2

R.T.: 7.385 min  
 Delta R.T.: -0.016 min  
 Response: 7619809  
 Conc: 410.32 ng/ml



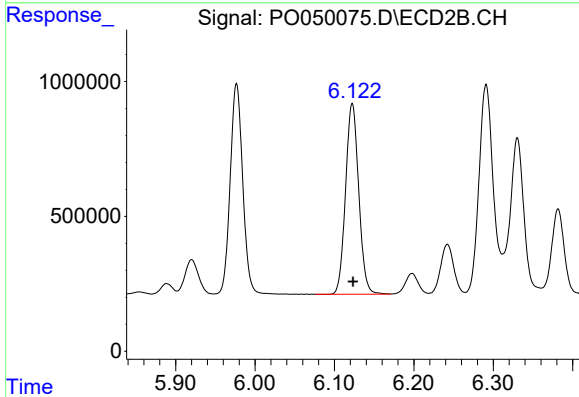
#32 AR-1260-2

R.T.: 5.977 min  
 Delta R.T.: -0.001 min  
 Response: 8577398  
 Conc: 503.27 ng/ml

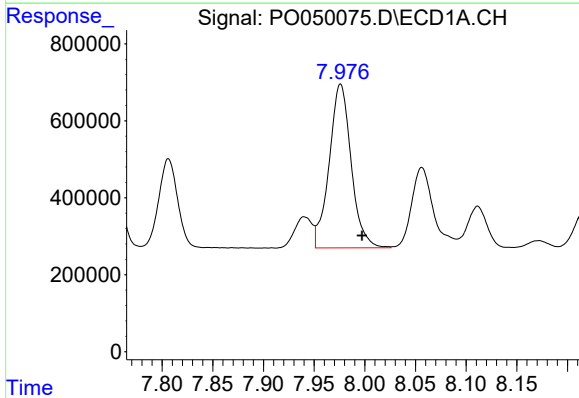


#33 AR-1260-3  
 R.T.: 7.748 min  
 Delta R.T.: -0.019 min  
 Response: 5565174  
 Conc: 418.26 ng/ml

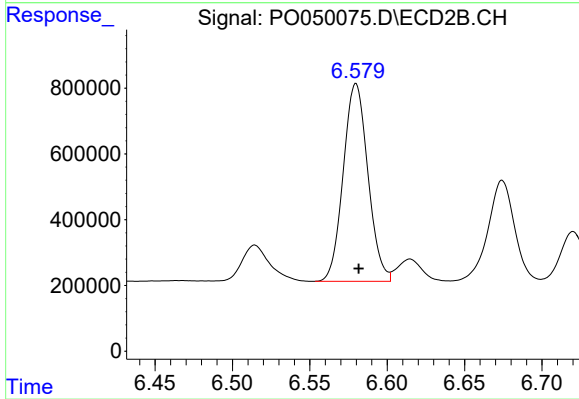
**Instrument :**  
 ECD\_O  
**ClientSampled :**  
 AR1660CCC500



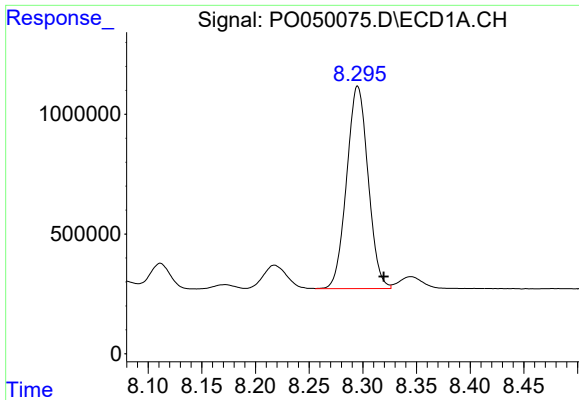
#33 AR-1260-3  
 R.T.: 6.122 min  
 Delta R.T.: -0.001 min  
 Response: 8154826  
 Conc: 504.16 ng/ml



#34 AR-1260-4  
 R.T.: 7.976 min  
 Delta R.T.: -0.021 min  
 Response: 6422391  
 Conc: 419.78 ng/ml



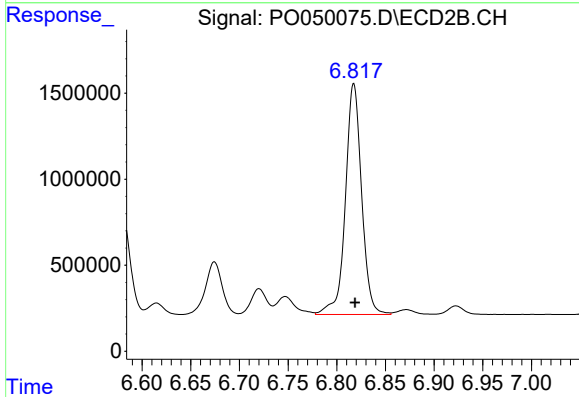
#34 AR-1260-4  
 R.T.: 6.580 min  
 Delta R.T.: -0.002 min  
 Response: 6666711  
 Conc: 527.74 ng/ml



#35 AR-1260-5

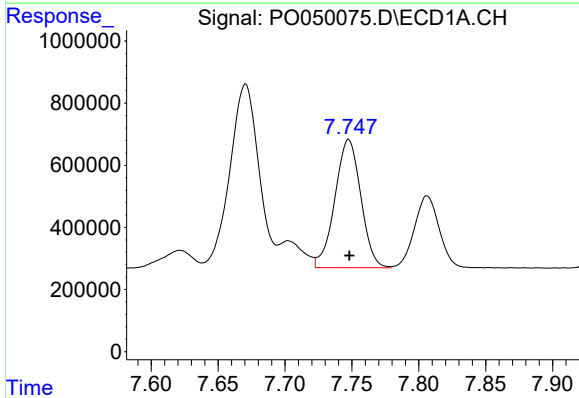
R.T.: 8.295 min  
 Delta R.T.: -0.024 min  
 Response: 11768737  
 Conc: 431.44 ng/ml

Instrument :  
 ECD\_O  
 ClientSampled :  
 AR1660CCC500



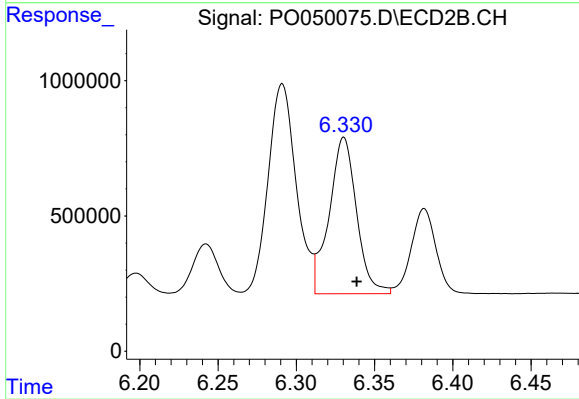
#35 AR-1260-5

R.T.: 6.817 min  
 Delta R.T.: -0.001 min  
 Response: 15559044  
 Conc: 558.90 ng/ml



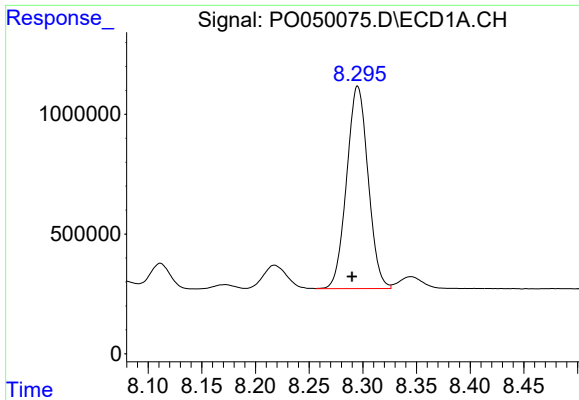
#36 AR-1262-1

R.T.: 7.748 min  
 Delta R.T.: 0.000 min  
 Response: 5565174  
 Conc: 377.32 ng/ml



#36 AR-1262-1

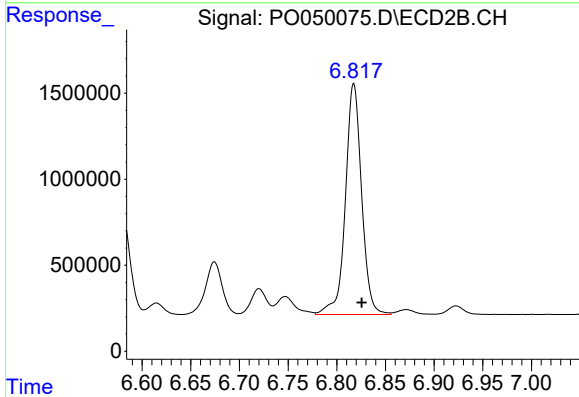
R.T.: 6.330 min  
 Delta R.T.: -0.008 min  
 Response: 7049137  
 Conc: 469.91 ng/ml



#37 AR-1262-2

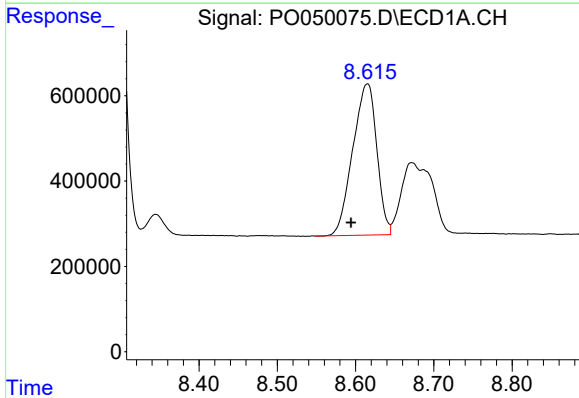
R.T.: 8.295 min  
 Delta R.T.: 0.005 min  
 Response: 11768737  
 Conc: 511.82 ng/ml

Instrument :  
 ECD\_O  
 ClientSampleId :  
 AR1660CCC500



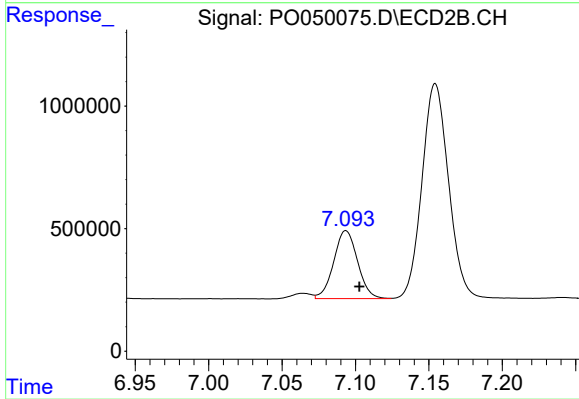
#37 AR-1262-2

R.T.: 6.817 min  
 Delta R.T.: -0.008 min  
 Response: 15559044  
 Conc: 648.81 ng/ml



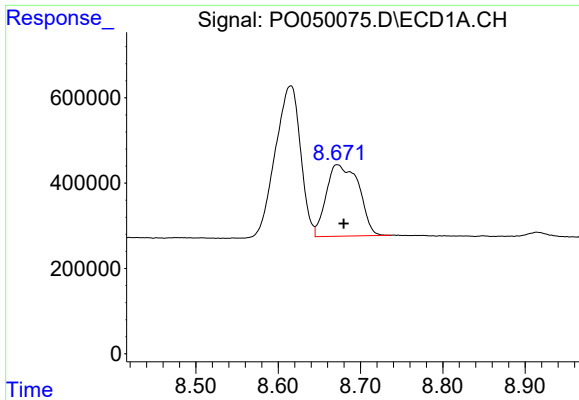
#38 AR-1262-3

R.T.: 8.615 min  
 Delta R.T.: 0.021 min  
 Response: 7563032  
 Conc: 480.25 ng/ml



#38 AR-1262-3

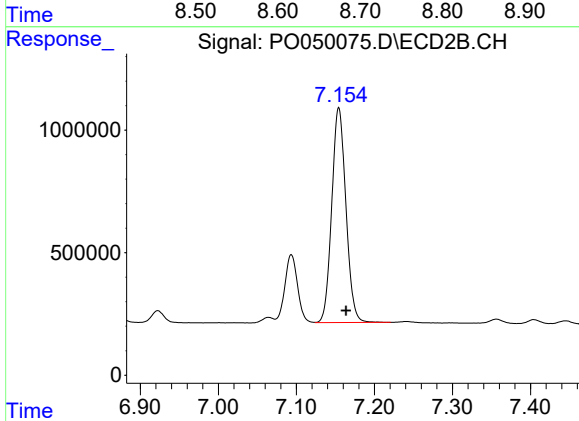
R.T.: 7.094 min  
 Delta R.T.: -0.009 min  
 Response: 3140369  
 Conc: 322.80 ng/ml



#39 AR-1262-4

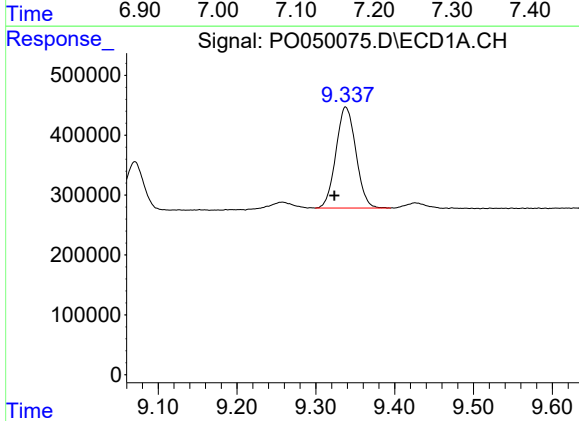
R.T.: 8.672 min  
 Delta R.T.: -0.008 min  
 Response: 4607379  
 Conc: 369.79 ng/ml

Instrument :  
 ECD\_O  
 ClientSampleId :  
 AR1660CCC500



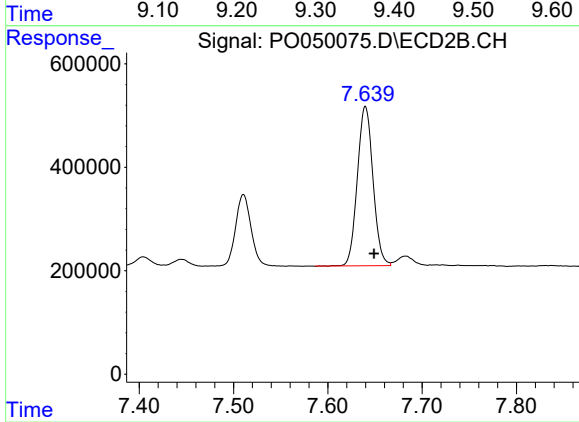
#39 AR-1262-4

R.T.: 7.154 min  
 Delta R.T.: -0.009 min  
 Response: 11050155  
 Conc: 622.91 ng/ml



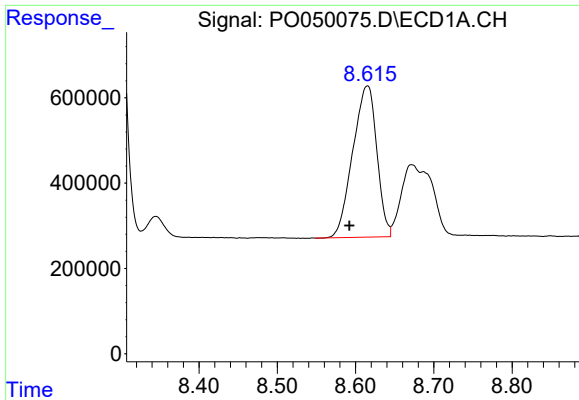
#40 AR-1262-5

R.T.: 9.338 min  
 Delta R.T.: 0.014 min  
 Response: 2968375  
 Conc: 417.66 ng/ml



#40 AR-1262-5

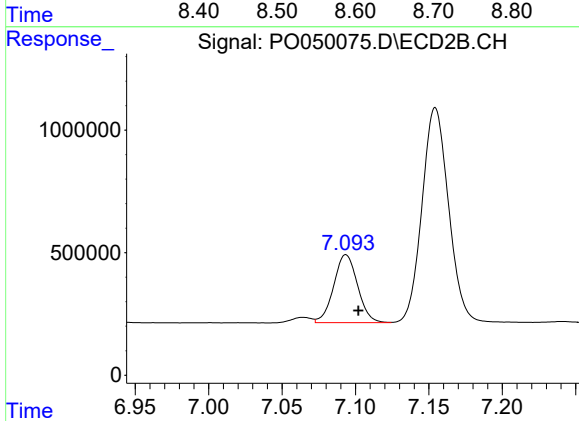
R.T.: 7.640 min  
 Delta R.T.: -0.009 min  
 Response: 3552274  
 Conc: 512.59 ng/ml



#41 AR-1268-1

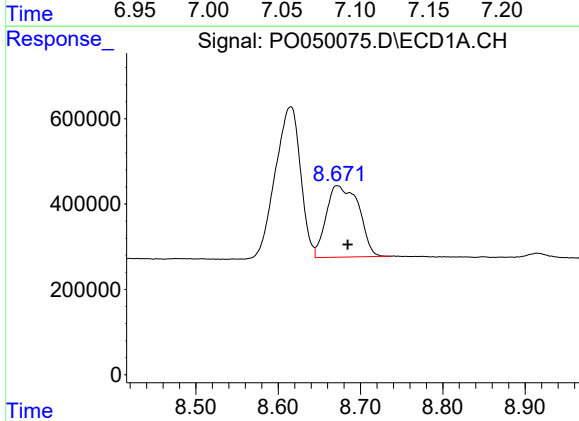
R.T.: 8.615 min  
 Delta R.T.: 0.023 min  
 Response: 7563032  
 Conc: 258.05 ng/ml

Instrument :  
 ECD\_O  
 ClientSampleId :  
 AR1660CCC500



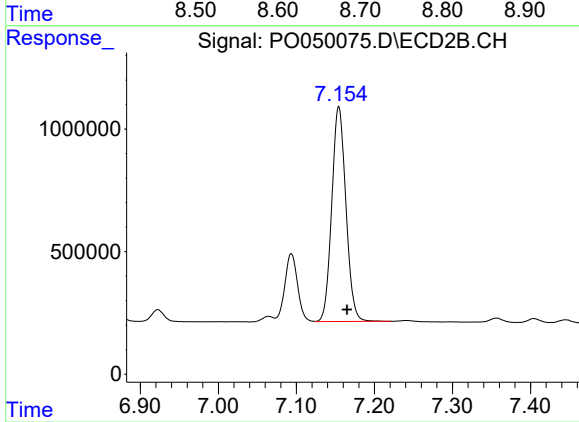
#41 AR-1268-1

R.T.: 7.094 min  
 Delta R.T.: -0.008 min  
 Response: 3140369  
 Conc: 104.28 ng/ml



#42 AR-1268-2

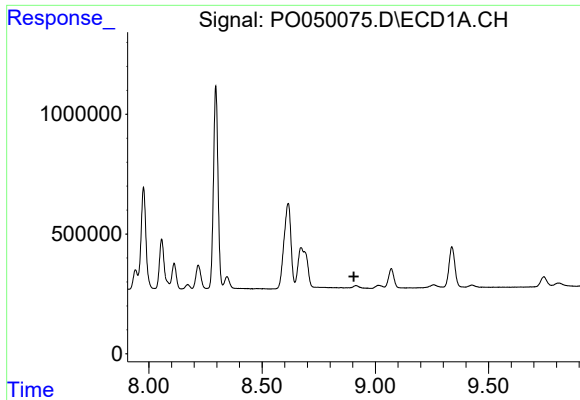
R.T.: 8.672 min  
 Delta R.T.: -0.013 min  
 Response: 4607379  
 Conc: 170.13 ng/ml



#42 AR-1268-2

R.T.: 7.154 min  
 Delta R.T.: -0.010 min  
 Response: 11050155  
 Conc: 392.58 ng/ml

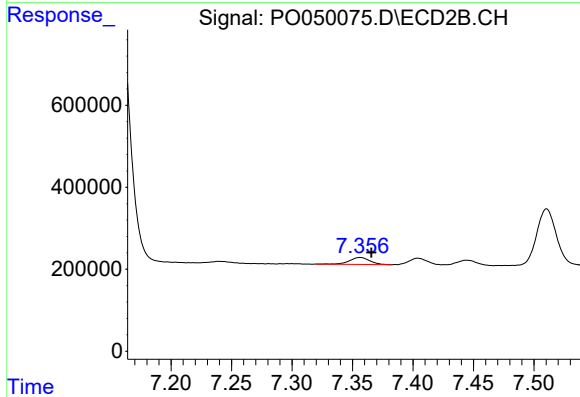




#43 AR-1268-3

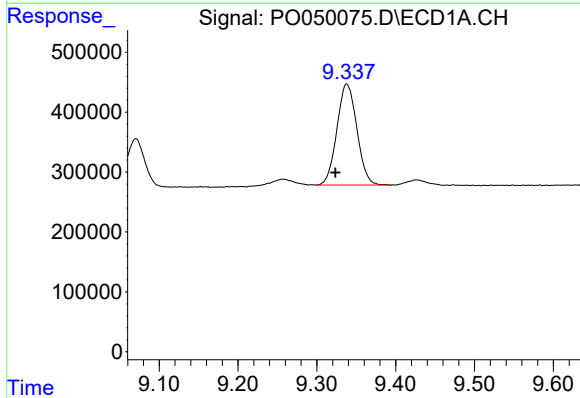
R.T.: 0.000 min  
 Exp R.T.: 8.906 min  
 Response: 0  
 Conc: N.D.

Instrument :  
 ECD\_O  
 ClientSampleId :  
 AR1660CCC500



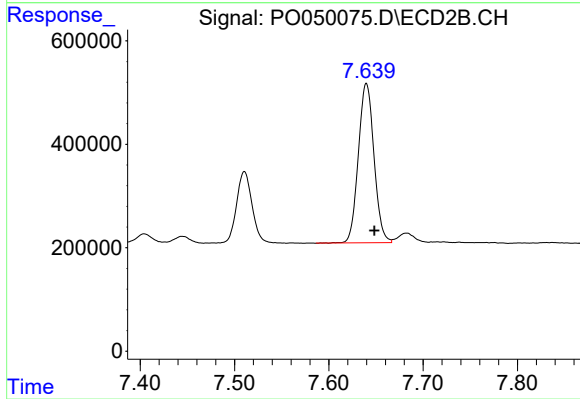
#43 AR-1268-3

R.T.: 7.356 min  
 Delta R.T.: -0.009 min  
 Response: 198492  
 Conc: 8.38 ng/ml



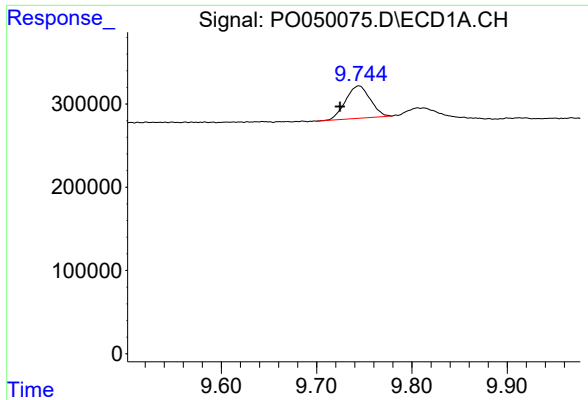
#44 AR-1268-4

R.T.: 9.338 min  
 Delta R.T.: 0.014 min  
 Response: 2968375  
 Conc: 350.39 ng/ml



#44 AR-1268-4

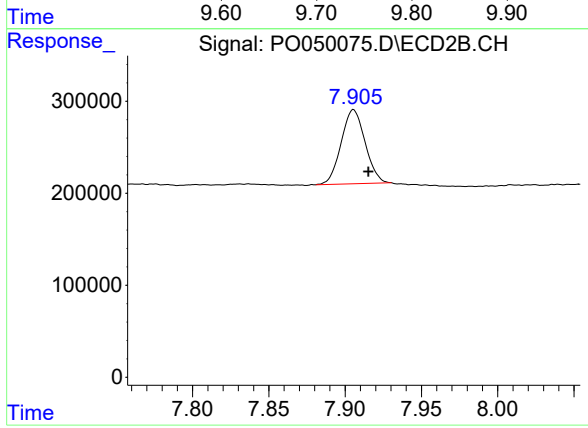
R.T.: 7.640 min  
 Delta R.T.: -0.008 min  
 Response: 3552274  
 Conc: 424.28 ng/ml



#45 AR-1268-5

R.T.: 9.744 min  
Delta R.T.: 0.020 min  
Response: 700773  
Conc: 10.60 ng/ml

Instrument :  
ECD\_O  
ClientSampleId :  
AR1660CCC500



#45 AR-1268-5

R.T.: 7.906 min  
Delta R.T.: -0.010 min  
Response: 883003  
Conc: 16.23 ng/ml