

Data Path : Z:\pestpcbsrv\HPCHEM1\ECD_0\Data\PO101618\
 Data File : PO050109.D
 Signal(s) : Signal #1: ECD1A.CH Signal #2: ECD2B.CH
 Acq On : 17 Oct 2018 2:18
 Operator : SM/SJ
 Sample : I.BLK
 Misc :
 ALS Vial : 2 Sample Multiplier: 1

Instrument :
 ECD_0
 ClientSampleId :

Integration File signal 1: autoint1.e
 Integration File signal 2: autoint2.e
 Quant Time: Oct 17 06:51:49 2018
 Quant Method : Z:\pestpcbsrv\HPCHEM1\ECD_0\methods\PO101518.M
 Quant Title : GC EXTRACTABLES
 QLast Update : Mon Oct 15 16:37:53 2018
 Response via : Initial Calibration
 Integrator: ChemStation 6890 Scale Mode: Small noise peaks clipped

Volume Inj. : 2 µl
 Signal #1 Phase : ZB-MR1 Signal #2 Phase: ZB-MR2
 Signal #1 Info : 30Mx0.32mmx 0.50µ Signal #2 Info : 30M x 0.32mm x 0.25µm

Compound	RT#1	RT#2	Resp#1	Resp#2	ng/ml	ng/ml

System Monitoring Compounds						
1) SA Tetrachlo...	4.327	3.362	4537997	4430889	18.421	22.615
2) SA Decachlor...	10.059	8.121	5718240	4398993	30.376	25.581
Target Compounds						
20) L4 AR-1242-5	0.000	5.166	0	220793	N.D.	46.767 #
24) L5 AR-1248-4	6.366	0.000	583179	0	61.189	N.D. #
25) L5 AR-1248-5	0.000	5.166	0	220793	N.D.	31.680 #
26) L6 AR-1254-1	6.366	5.166	583179	220793	49.123	16.489 #

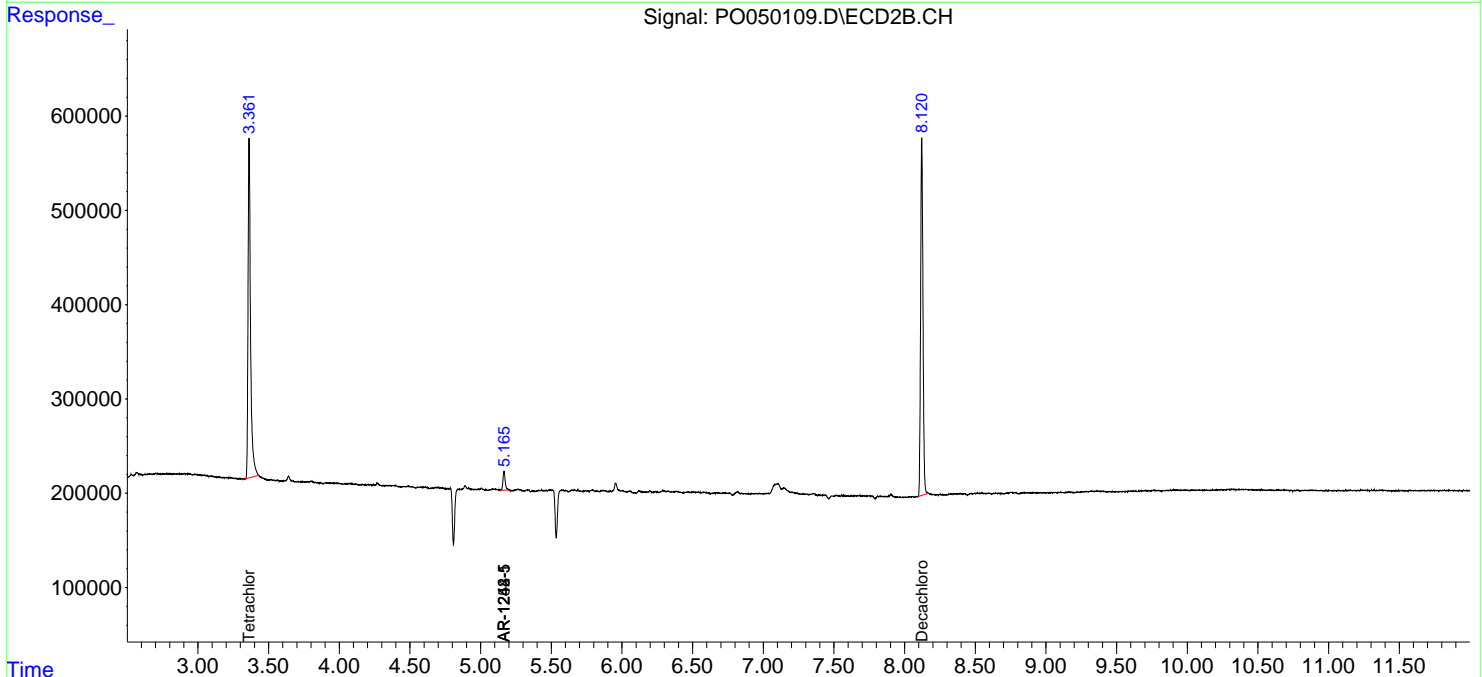
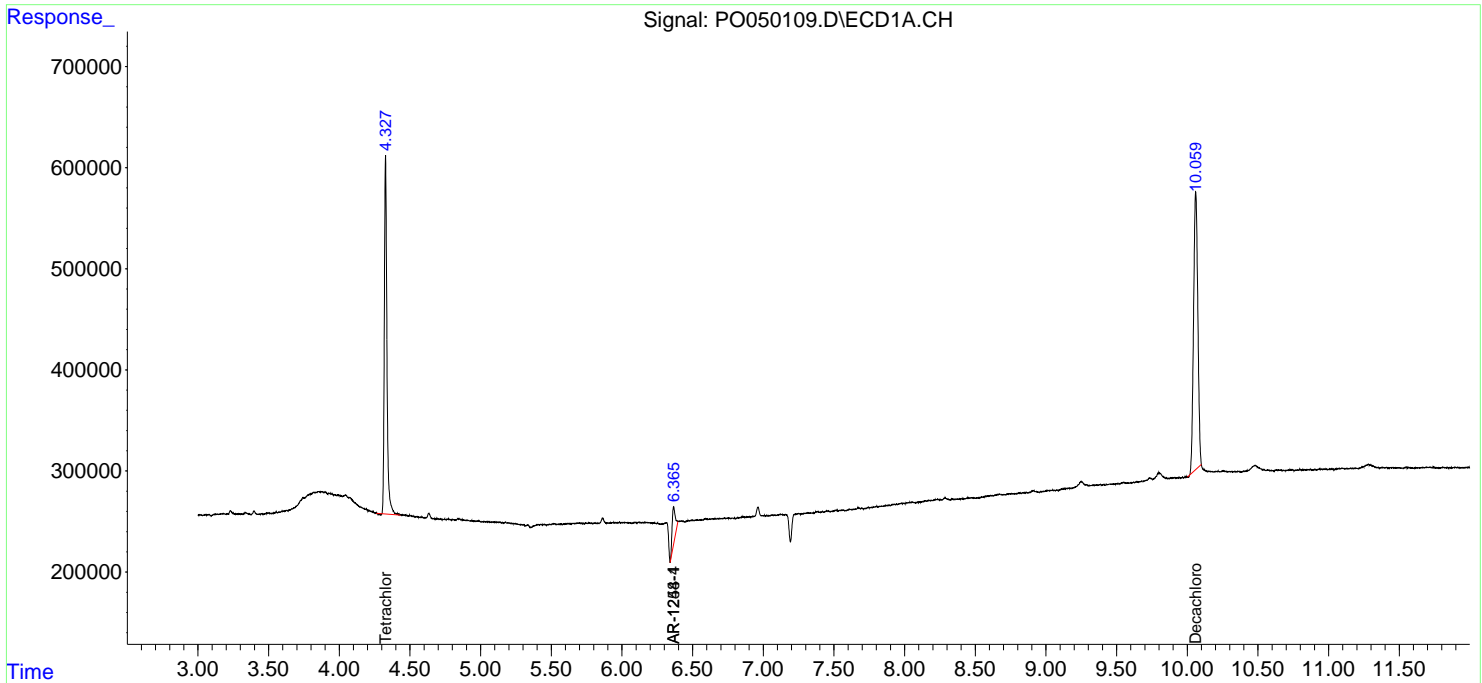
(f)=RT Delta > 1/2 Window (#)=Amounts differ by > 25% (m)=manual int.

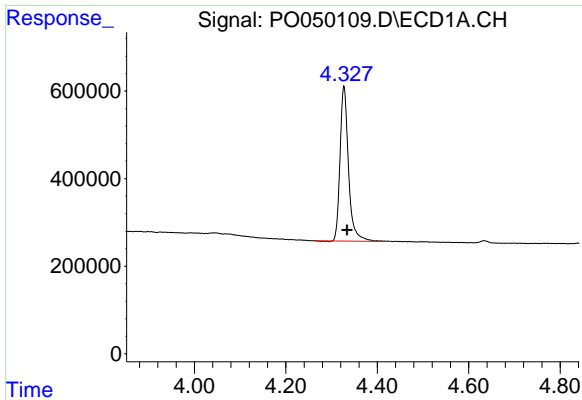
Data Path : Z:\pestpcbsrv\HPCHEM1\ECD_0\Data\PO101618\
 Data File : PO050109.D
 Signal(s) : Signal #1: ECD1A.CH Signal #2: ECD2B.CH
 Acq On : 17 Oct 2018 2:18
 Operator : SM/SJ
 Sample : I.BLK
 Misc :
 ALS Vial : 2 Sample Multiplier: 1

Instrument :
 ECD_O
 ClientSampled :

Integration File signal 1: autoint1.e
 Integration File signal 2: autoint2.e
 Quant Time: Oct 17 06:51:49 2018
 Quant Method : Z:\pestpcbsrv\HPCHEM1\ECD_0\methods\PO101518.M
 Quant Title : GC EXTRACTABLES
 QLast Update : Mon Oct 15 16:37:53 2018
 Response via : Initial Calibration
 Integrator: ChemStation 6890 Scale Mode: Small noise peaks clipped

Volume Inj. : 2 µl
 Signal #1 Phase : ZB-MR1 Signal #2 Phase: ZB-MR2
 Signal #1 Info : 30Mx0.32mmx 0.50µ Signal #2 Info : 30M x 0.32mm x 0.25µm

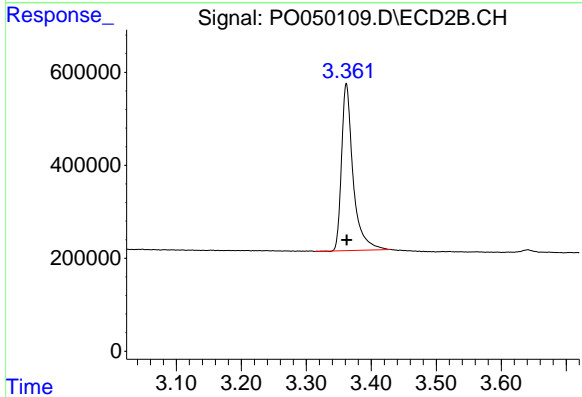




#1 Tetrachloro-m-xylene

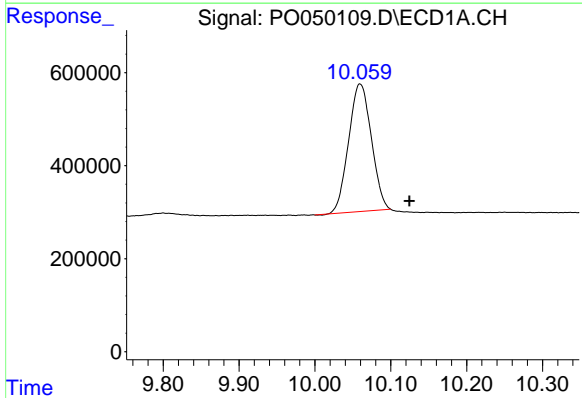
R.T.: 4.327 min
Delta R.T.: -0.007 min
Response: 4537997
Conc: 18.42 ng/ml

Instrument :
ECD_O
ClientSampleId :



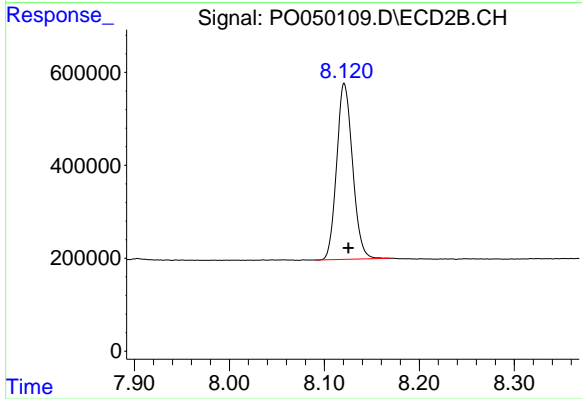
#1 Tetrachloro-m-xylene

R.T.: 3.362 min
Delta R.T.: 0.000 min
Response: 4430889
Conc: 22.62 ng/ml



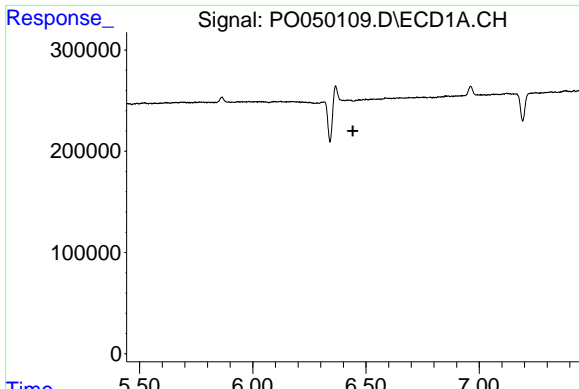
#2 Decachlorobiphenyl

R.T.: 10.059 min
Delta R.T.: -0.065 min
Response: 5718240
Conc: 30.38 ng/ml



#2 Decachlorobiphenyl

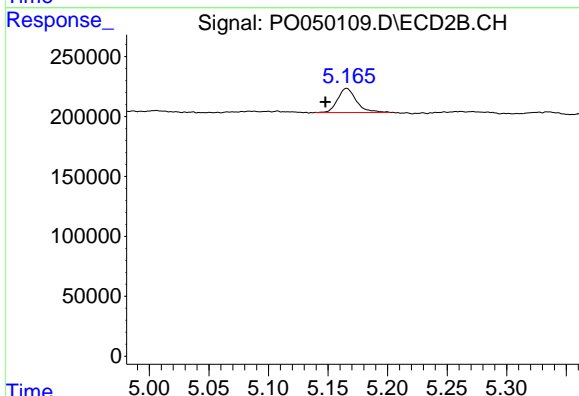
R.T.: 8.121 min
Delta R.T.: -0.004 min
Response: 4398993
Conc: 25.58 ng/ml



#20 AR-1242-5

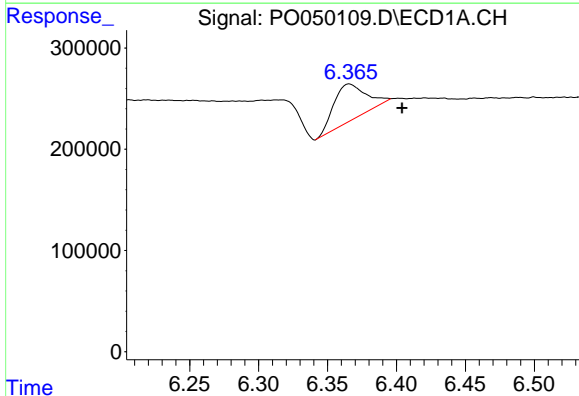
R.T.: 0.000 min
 Exp R.T.: 6.442 min
 Response: 0
 Conc: N.D.

Instrument :
 ECD_O
 ClientSampleId :



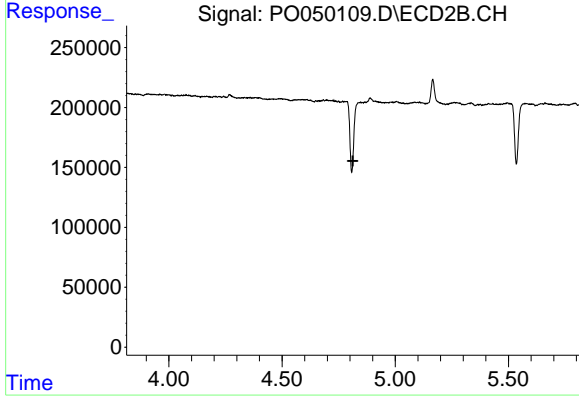
#20 AR-1242-5

R.T.: 5.166 min
 Delta R.T.: 0.018 min
 Response: 220793
 Conc: 46.77 ng/ml



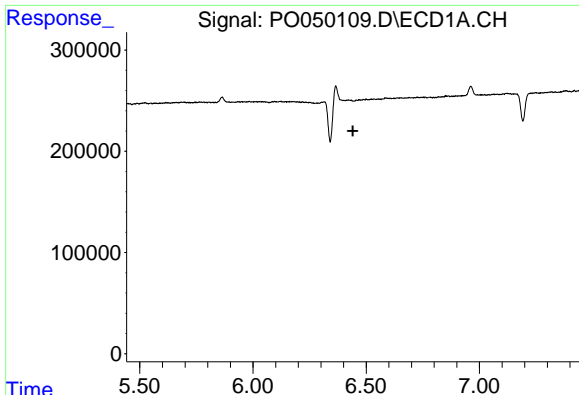
#24 AR-1248-4

R.T.: 6.366 min
 Delta R.T.: -0.038 min
 Response: 583179
 Conc: 61.19 ng/ml



#24 AR-1248-4

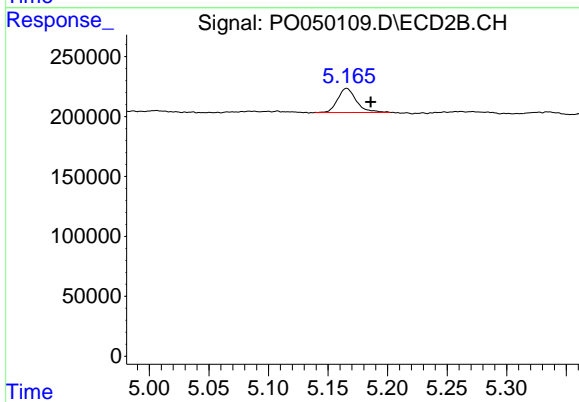
R.T.: 0.000 min
 Exp R.T.: 4.813 min
 Response: 0
 Conc: N.D.



#25 AR-1248-5

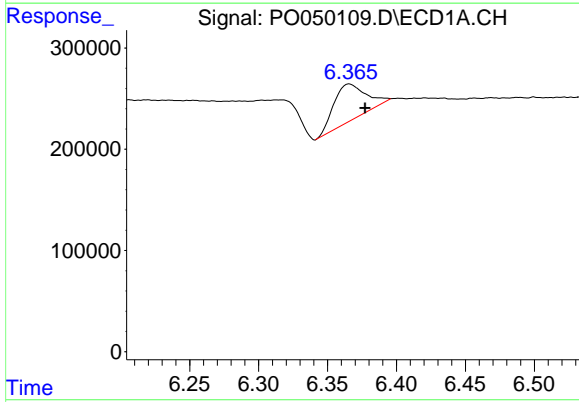
R.T.: 0.000 min
 Exp R.T.: 6.442 min
 Response: 0
 Conc: N.D.

Instrument :
 ECD_O
 ClientSampleId :



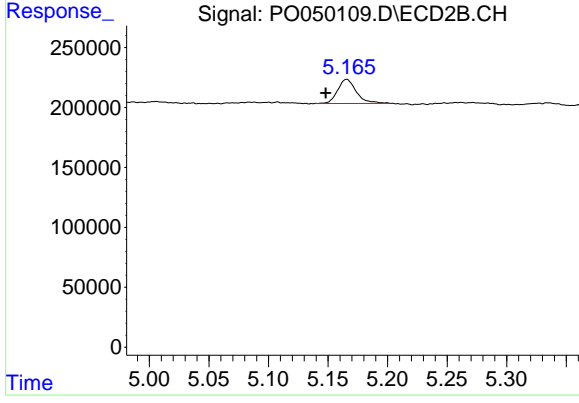
#25 AR-1248-5

R.T.: 5.166 min
 Delta R.T.: -0.020 min
 Response: 220793
 Conc: 31.68 ng/ml



#26 AR-1254-1

R.T.: 6.366 min
 Delta R.T.: -0.012 min
 Response: 583179
 Conc: 49.12 ng/ml



#26 AR-1254-1

R.T.: 5.166 min
 Delta R.T.: 0.018 min
 Response: 220793
 Conc: 16.49 ng/ml