

Data Path : Z:\pestpcbsrv\HPCHEM1\ECD_0\Data\PO101618\
 Data File : PO050125.D
 Signal(s) : Signal #1: ECD1A.CH Signal #2: ECD2B.CH
 Acq On : 17 Oct 2018 8:12
 Operator : SM/SJ
 Sample : J5520-01
 Misc :
 ALS Vial : 35 Sample Multiplier: 1

Instrument :
 ECD_0
 ClientSampled :
 CON-163

Integration File signal 1: autoint1.e
 Integration File signal 2: autoint2.e
 Quant Time: Oct 17 08:32:01 2018
 Quant Method : Z:\pestpcbsrv\HPCHEM1\ECD_0\methods\PO101518.M
 Quant Title : GC EXTRACTABLES
 QLast Update : Mon Oct 15 16:37:53 2018
 Response via : Initial Calibration
 Integrator: ChemStation 6890 Scale Mode: Small noise peaks clipped

Volume Inj. : 2 µl
 Signal #1 Phase : ZB-MR2 Signal #2 Phase: ZB-MR2
 Signal #1 Info : 30Mx0.32mmx 0.50µ Signal #2 Info : 30M x 0.32mm x 0.25µm

Compound	RT#1	RT#2	Resp#1	Resp#2	ng/ml	ng/ml

System Monitoring Compounds						
1) SA Tetrachlo...	4.330	3.361	5522234	4921823	22.417	25.121
2) SA Decachlor...	0.000	8.121	0	4734648	N.D.	27.533 #
Target Compounds						
3) L1 AR-1016-1	0.000	4.431	0	753767	N.D.	104.901 #
4) L1 AR-1016-2	0.000	4.431	0	753767	N.D.	62.013 #
5) L1 AR-1016-3	0.000	4.551	0	631776	N.D.	102.978 #
6) L1 AR-1016-4	0.000	4.591	0	714961	N.D.	145.586 #
7) L1 AR-1016-5	0.000	4.775	0	323070	N.D.	48.934 #
8) L2 AR-1221-1	0.000	3.530	0	25416	N.D.	12.605 #
9) L2 AR-1221-2	0.000	3.643	0	1408144	N.D.	942.883 #
10) L2 AR-1221-3	0.000	3.718	0	572040	N.D.	115.703 #
11) L3 AR-1232-1	0.000	3.718	0	572040	N.D.	160.277 #
12) L3 AR-1232-2	0.000	4.431	0	753767	N.D.	177.115 #
13) L3 AR-1232-3	0.000	4.551	0	631776	N.D.	316.706 #
14) L3 AR-1232-4	0.000	4.672	0	399392	N.D.	220.704 #
15) L3 AR-1232-5	0.000	4.775	0	323070	N.D.	156.709 #
16) L4 AR-1242-1	0.000	4.431	0	753767	N.D.	158.509 #
17) L4 AR-1242-2	0.000	4.431	0	753767	N.D.	94.823 #
18) L4 AR-1242-3	0.000	4.551	0	631776	N.D.	157.106 #
19) L4 AR-1242-4	0.000	4.672	0	399392	N.D.	96.099 #
20) L4 AR-1242-5	0.000	5.137	0	146600	N.D.	31.051 #
21) L5 AR-1248-1	0.000	4.431	0	753767	N.D.	191.960 #
22) L5 AR-1248-2	0.000	4.591	0	714961	N.D.	117.946 #
23) L5 AR-1248-3	0.000	4.672	0	399392	N.D.	65.610 #
24) L5 AR-1248-4	0.000	4.775	0	323070	N.D.	43.113 #
25) L5 AR-1248-5	0.000	5.137	0	146600	N.D.	21.034 #
26) L6 AR-1254-1	0.000	5.137	0	146600	N.D.	10.948 #
33) L7 AR-1260-3	0.000	6.125	0	181555	N.D.	11.224 #

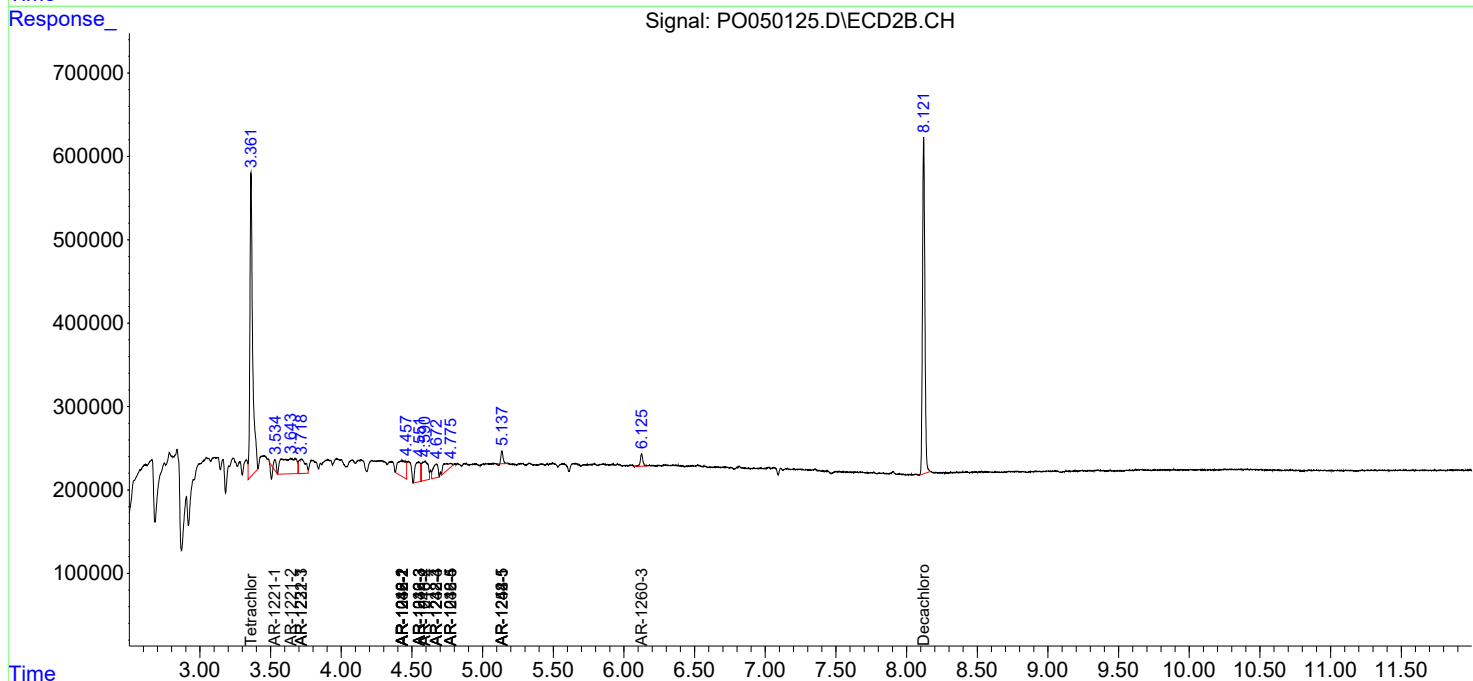
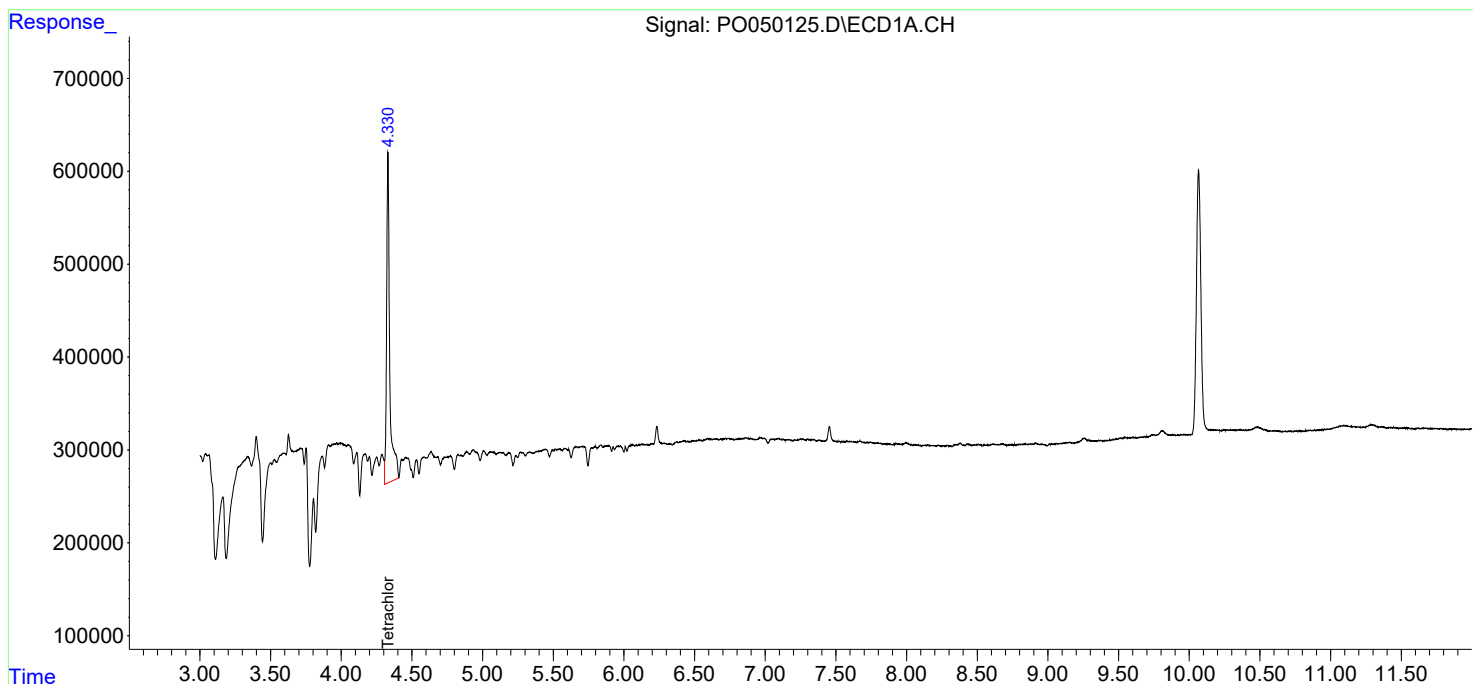
(f)=RT Delta > 1/2 Window (#)=Amounts differ by > 25% (m)=manual int.

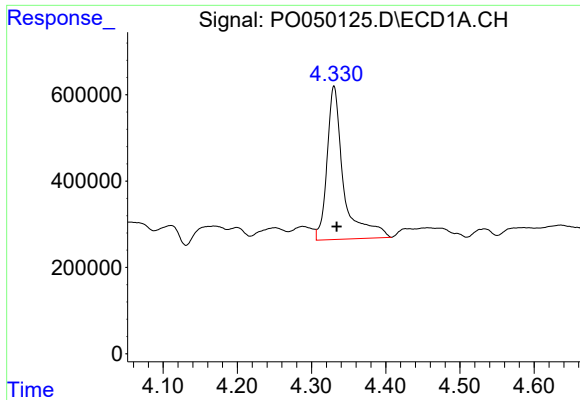
Data Path : Z:\pestpcbsrv\HPCHEM1\ECD_O\Data\PO101618\
 Data File : PO050125.D
 Signal(s) : Signal #1: ECD1A.CH Signal #2: ECD2B.CH
 Acq On : 17 Oct 2018 8:12
 Operator : SM/SJ
 Sample : J5520-01
 Misc :
 ALS Vial : 35 Sample Multiplier: 1

Instrument :
 ECD_O
 ClientSampled :
 CON-163

Integration File signal 1: autoint1.e
 Integration File signal 2: autoint2.e
 Quant Time: Oct 17 08:32:01 2018
 Quant Method : Z:\pestpcbsrv\HPCHEM1\ECD_O\methods\PO101518.M
 Quant Title : GC EXTRACTABLES
 QLast Update : Mon Oct 15 16:37:53 2018
 Response via : Initial Calibration
 Integrator: ChemStation 6890 Scale Mode: Small noise peaks clipped

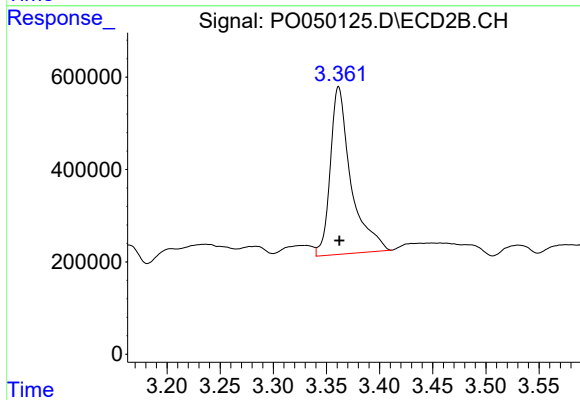
Volume Inj. : 2 µl
 Signal #1 Phase : ZB-MR1 Signal #2 Phase: ZB-MR2
 Signal #1 Info : 30Mx0.32mmx 0.50µ Signal #2 Info : 30M x 0.32mm x 0.25µm



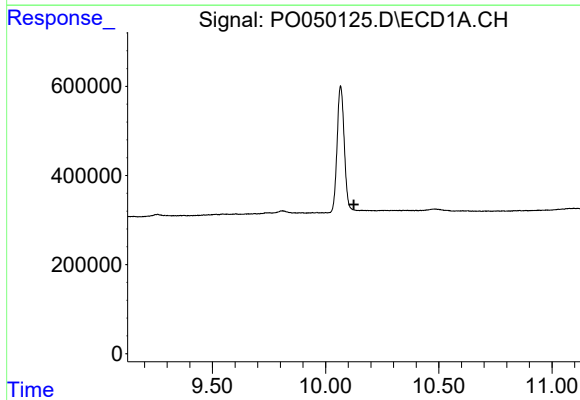


#1 Tetrachloro-m-xylene
 R.T.: 4.330 min
 Delta R.T.: -0.004 min
 Response: 5522234
 Conc: 22.42 ng/ml

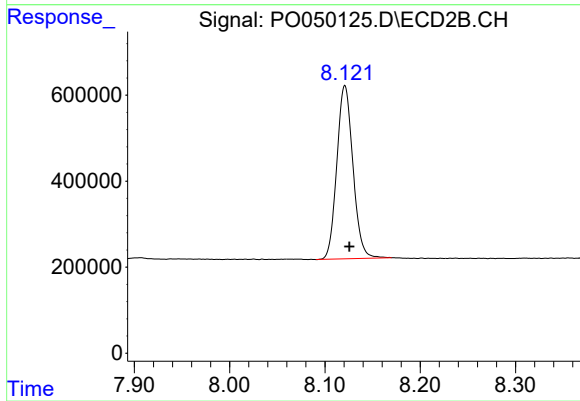
Instrument :
 ECD_O
 ClientSampleId :
 CON-163



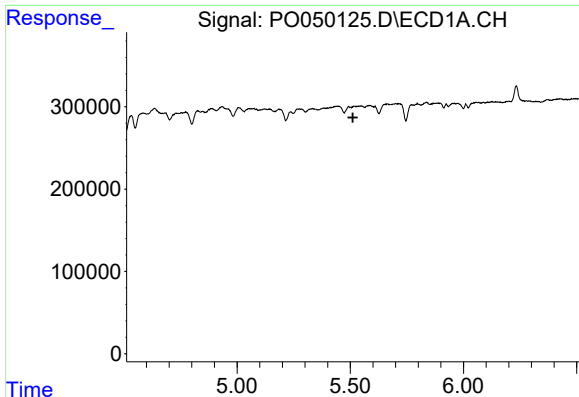
#1 Tetrachloro-m-xylene
 R.T.: 3.361 min
 Delta R.T.: 0.000 min
 Response: 4921823
 Conc: 25.12 ng/ml



#2 Decachlorobiphenyl
 R.T.: 0.000 min
 Exp R.T. : 10.125 min
 Response: 0
 Conc: N.D.



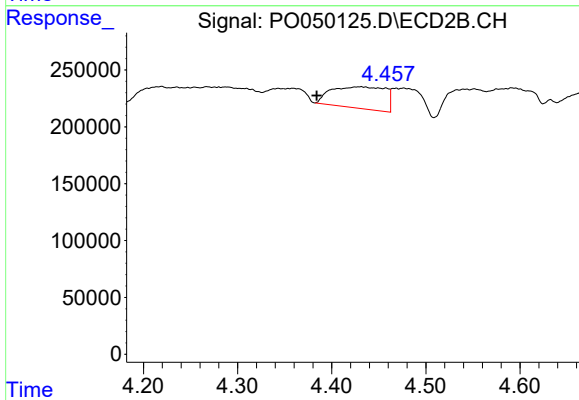
#2 Decachlorobiphenyl
 R.T.: 8.121 min
 Delta R.T.: -0.004 min
 Response: 4734648
 Conc: 27.53 ng/ml



#3 AR-1016-1

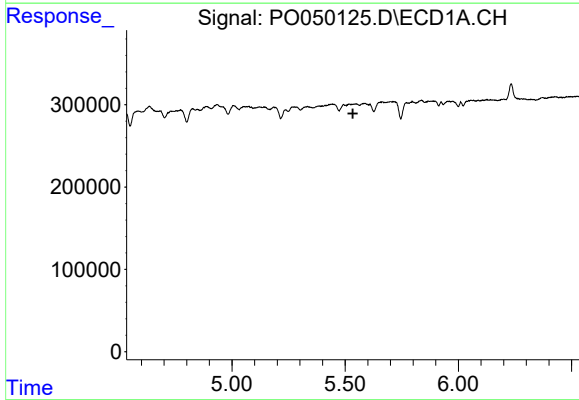
R.T.: 0.000 min
 Exp R.T. : 5.512 min
 Response: 0
 Conc: N.D.

Instrument :
 ECD_O
ClientSampled :
 CON-163



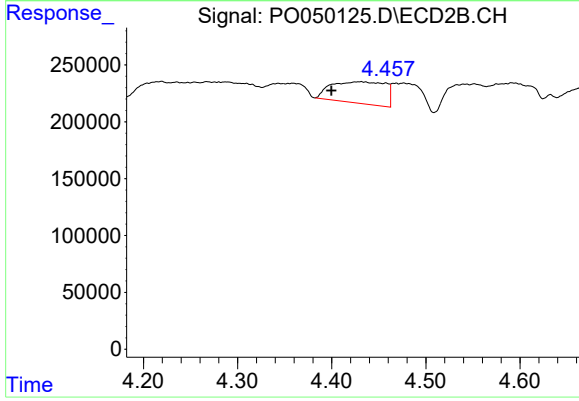
#3 AR-1016-1

R.T.: 4.431 min
 Delta R.T.: 0.047 min
 Response: 753767
 Conc: 104.90 ng/ml



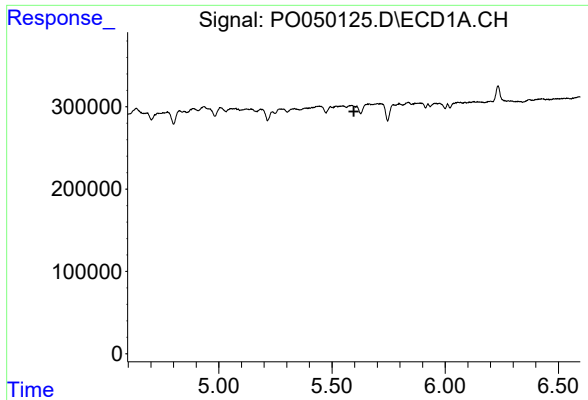
#4 AR-1016-2

R.T.: 0.000 min
 Exp R.T. : 5.534 min
 Response: 0
 Conc: N.D.



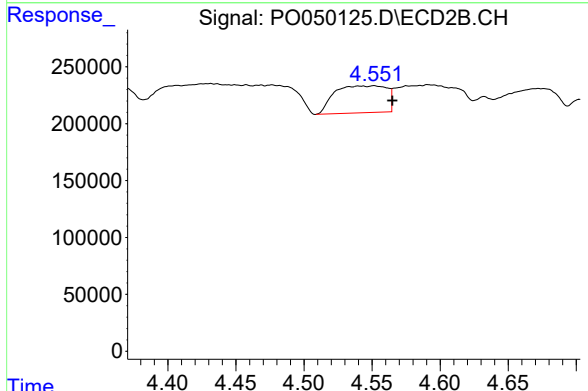
#4 AR-1016-2

R.T.: 4.431 min
 Delta R.T.: 0.031 min
 Response: 753767
 Conc: 62.01 ng/ml

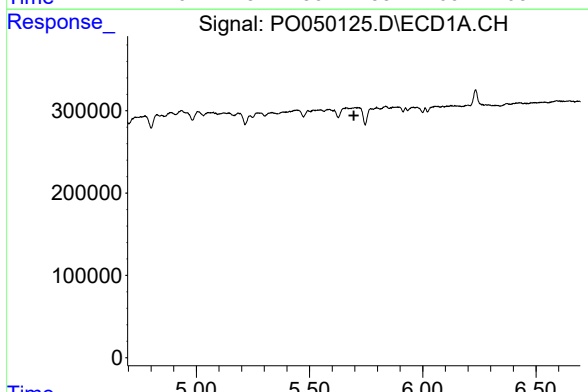


#5 AR-1016-3
 R.T.: 0.000 min
 Exp R.T.: 5.597 min
 Response: 0
 Conc: N.D.

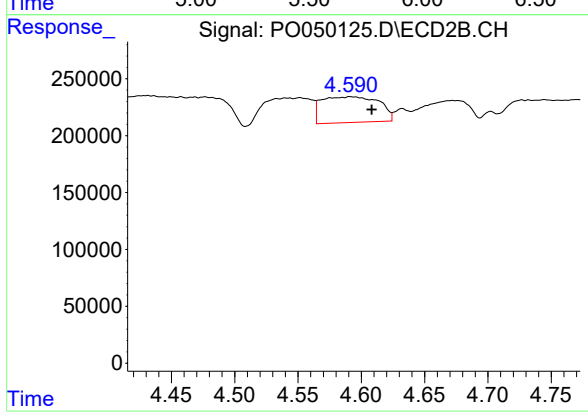
Instrument :
 ECD_O
 ClientSampleId :
 CON-163



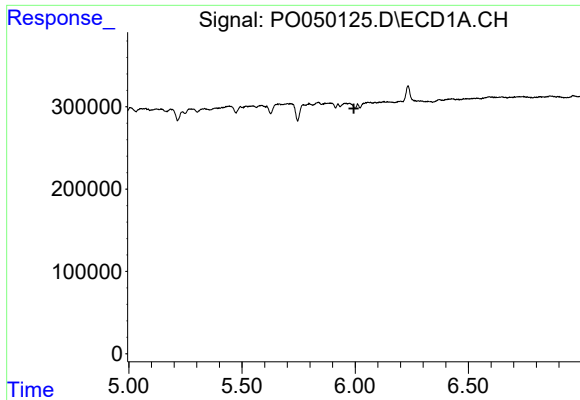
#5 AR-1016-3
 R.T.: 4.551 min
 Delta R.T.: -0.013 min
 Response: 631776
 Conc: 102.98 ng/ml



#6 AR-1016-4
 R.T.: 0.000 min
 Exp R.T.: 5.696 min
 Response: 0
 Conc: N.D.



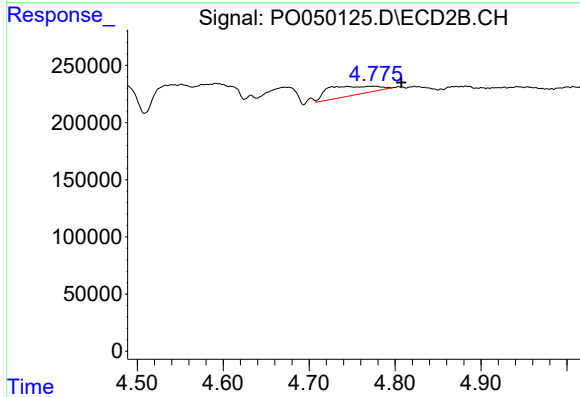
#6 AR-1016-4
 R.T.: 4.591 min
 Delta R.T.: -0.017 min
 Response: 714961
 Conc: 145.59 ng/ml



#7 AR-1016-5

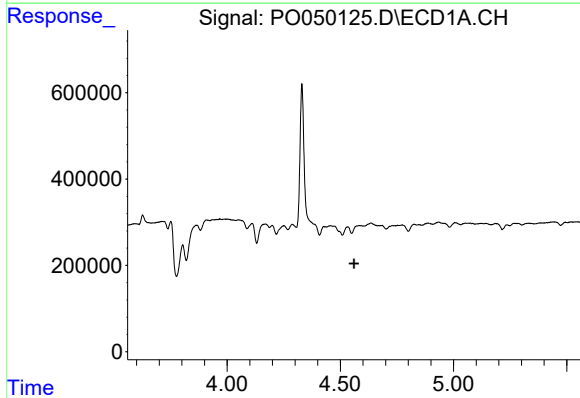
R.T.: 0.000 min
 Exp R.T.: 5.994 min
 Response: 0
 Conc: N.D.

Instrument :
 ECD_O
 ClientSampled :
 CON-163



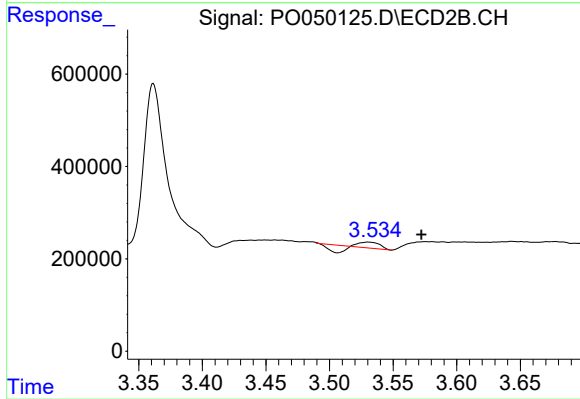
#7 AR-1016-5

R.T.: 4.775 min
 Delta R.T.: -0.032 min
 Response: 323070
 Conc: 48.93 ng/ml



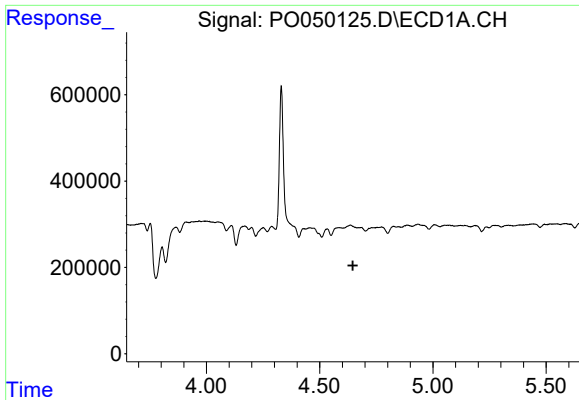
#8 AR-1221-1

R.T.: 0.000 min
 Exp R.T.: 4.560 min
 Response: 0
 Conc: N.D.



#8 AR-1221-1

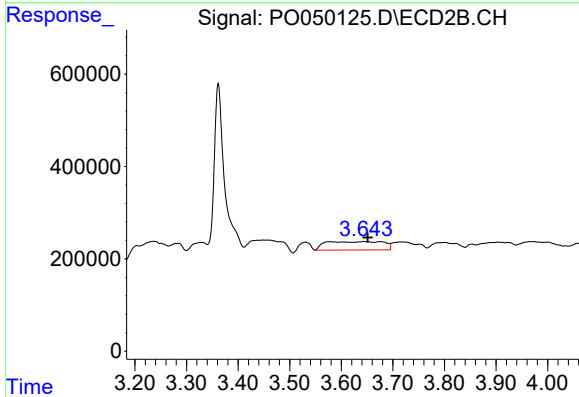
R.T.: 3.530 min
 Delta R.T.: -0.042 min
 Response: 25416
 Conc: 12.60 ng/ml



#9 AR-1221-2

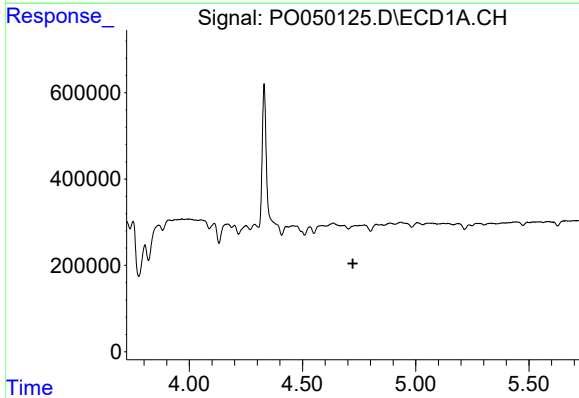
R.T.: 0.000 min
 Exp R.T. : 4.647 min
 Response: 0
 Conc: N.D.

Instrument :
 ECD_O
 ClientSampleId :
 CON-163



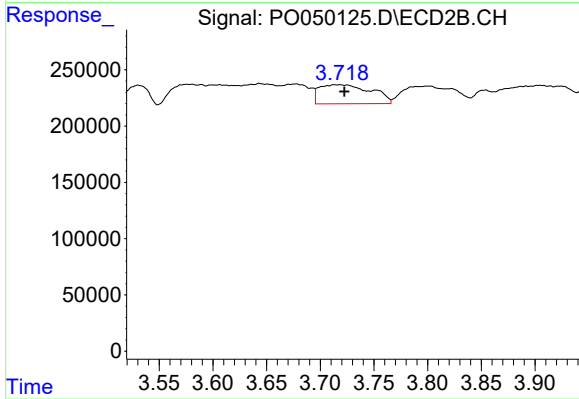
#9 AR-1221-2

R.T.: 3.643 min
 Delta R.T.: -0.008 min
 Response: 1408144
 Conc: 942.88 ng/ml



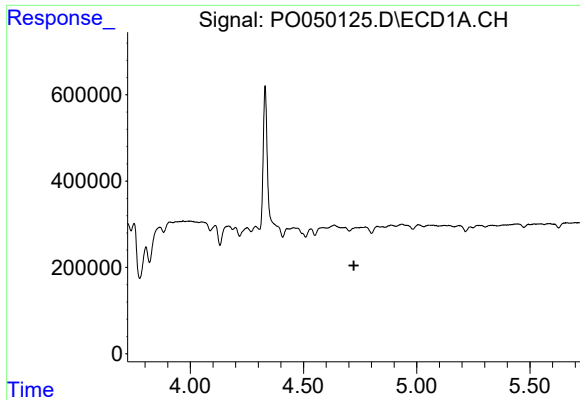
#10 AR-1221-3

R.T.: 0.000 min
 Exp R.T. : 4.723 min
 Response: 0
 Conc: N.D.



#10 AR-1221-3

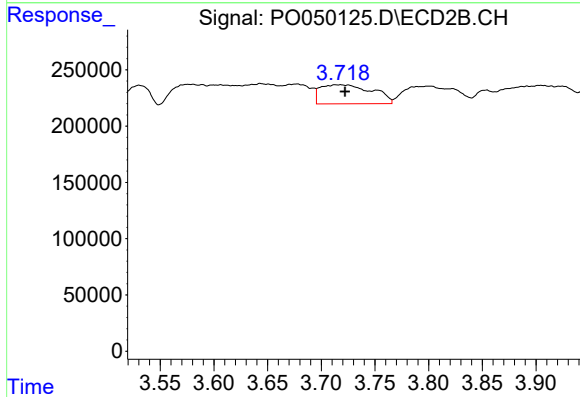
R.T.: 3.718 min
 Delta R.T.: -0.004 min
 Response: 572040
 Conc: 115.70 ng/ml



#11 AR-1232-1

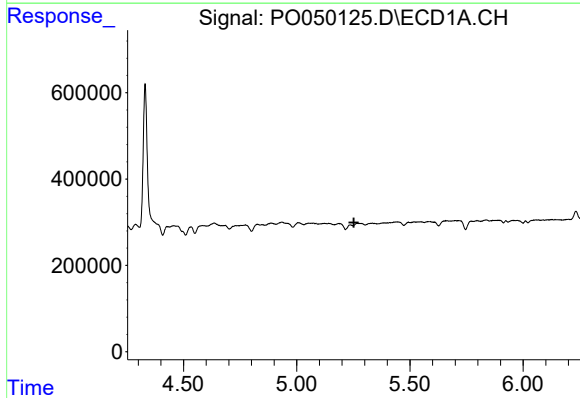
R.T.: 0.000 min
 Exp R.T. : 4.723 min
 Response: 0
 Conc: N.D.

Instrument :
 ECD_O
ClientSampleId :
 CON-163



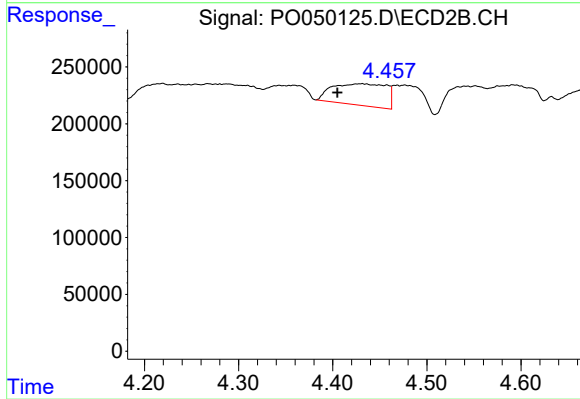
#11 AR-1232-1

R.T.: 3.718 min
 Delta R.T.: -0.004 min
 Response: 572040
 Conc: 160.28 ng/ml



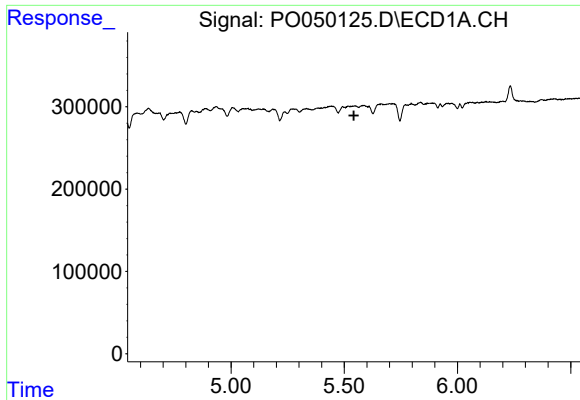
#12 AR-1232-2

R.T.: 0.000 min
 Exp R.T. : 5.252 min
 Response: 0
 Conc: N.D.



#12 AR-1232-2

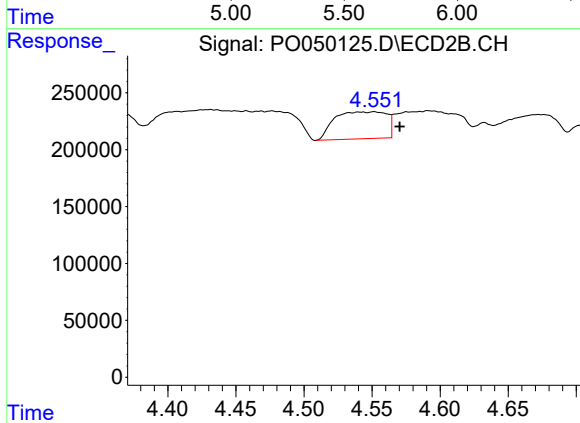
R.T.: 4.431 min
 Delta R.T.: 0.026 min
 Response: 753767
 Conc: 177.11 ng/ml



#13 AR-1232-3

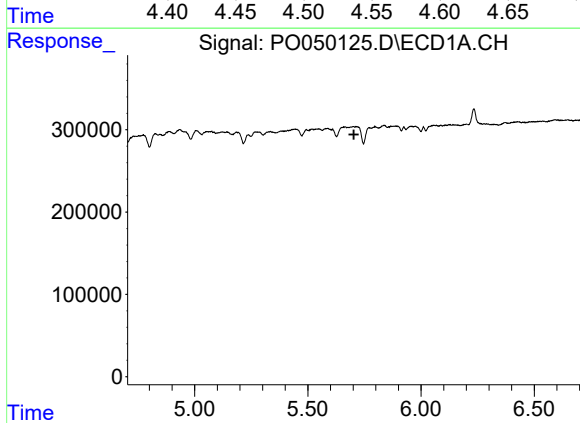
R.T.: 0.000 min
 Exp R.T. : 5.543 min
 Response: 0
 Conc: N.D.

Instrument :
 ECD_O
 ClientSampleId :
 CON-163



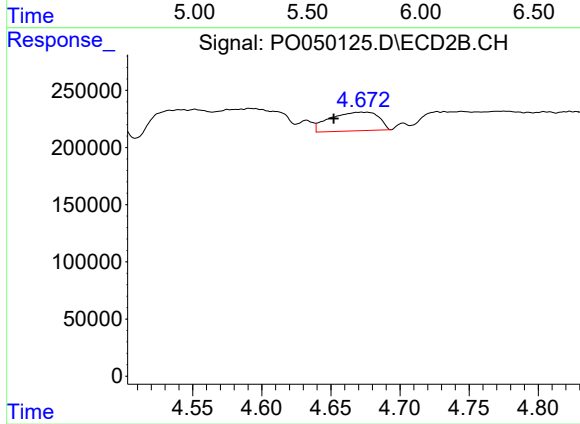
#13 AR-1232-3

R.T.: 4.551 min
 Delta R.T.: -0.019 min
 Response: 631776
 Conc: 316.71 ng/ml



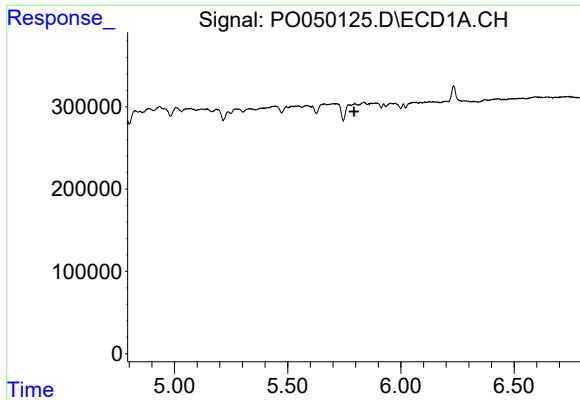
#14 AR-1232-4

R.T.: 0.000 min
 Exp R.T. : 5.703 min
 Response: 0
 Conc: N.D.



#14 AR-1232-4

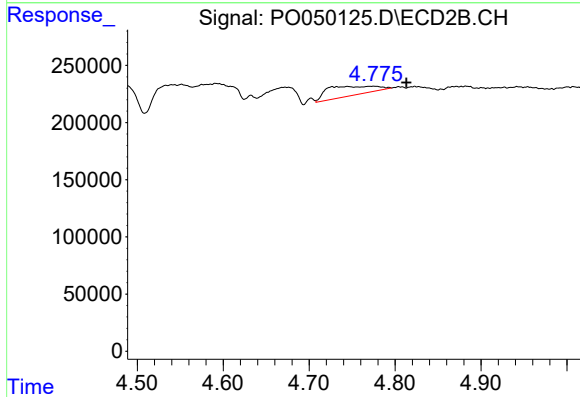
R.T.: 4.672 min
 Delta R.T.: 0.020 min
 Response: 399392
 Conc: 220.70 ng/ml



#15 AR-1232-5

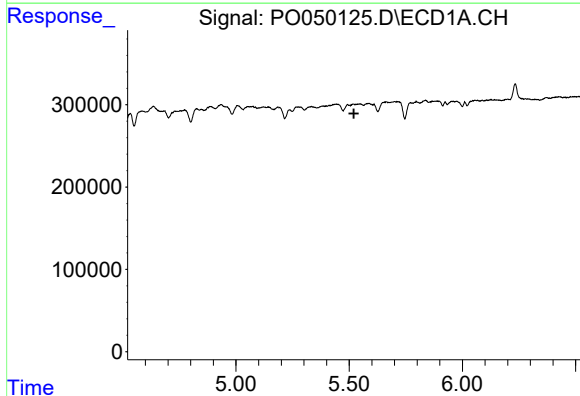
R.T.: 0.000 min
 Exp R.T. : 5.793 min
 Response: 0
 Conc: N.D.

Instrument :
 ECD_O
 ClientSampled :
 CON-163



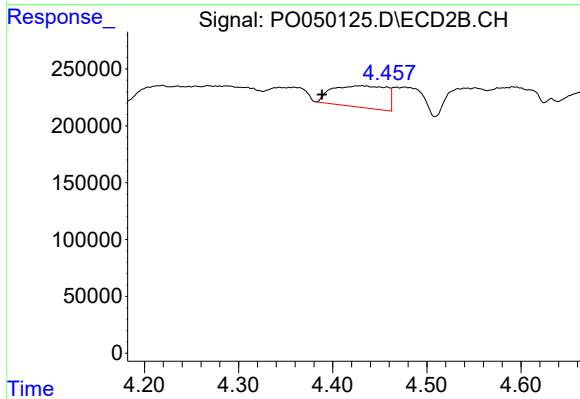
#15 AR-1232-5

R.T.: 4.775 min
 Delta R.T.: -0.038 min
 Response: 323070
 Conc: 156.71 ng/ml



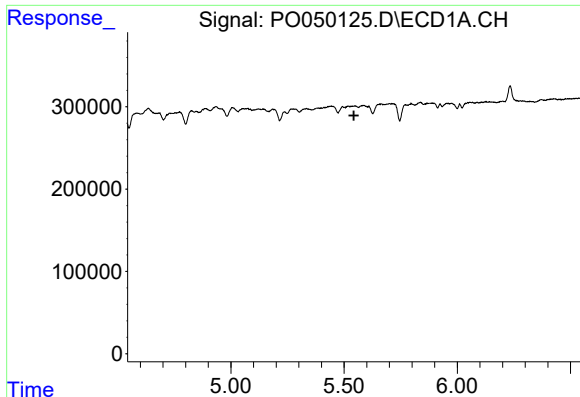
#16 AR-1242-1

R.T.: 0.000 min
 Exp R.T. : 5.521 min
 Response: 0
 Conc: N.D.



#16 AR-1242-1

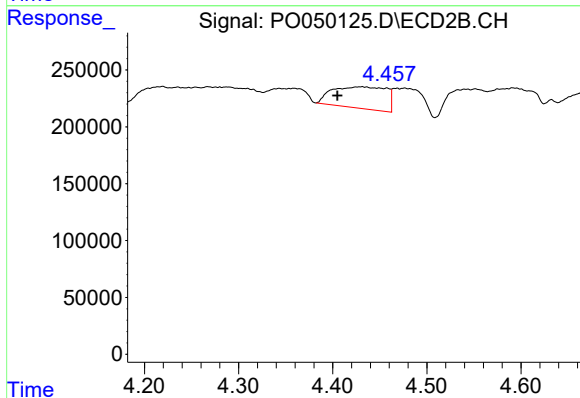
R.T.: 4.431 min
 Delta R.T.: 0.042 min
 Response: 753767
 Conc: 158.51 ng/ml



#17 AR-1242-2

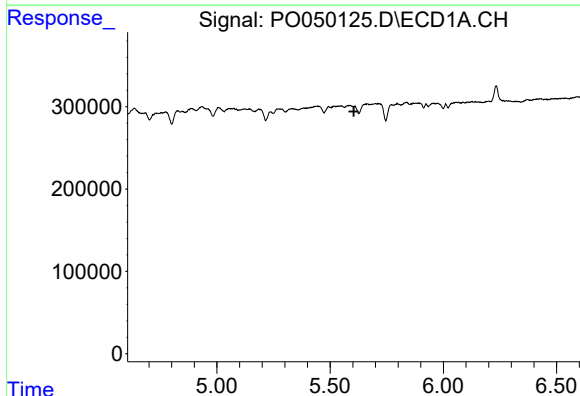
R.T.: 0.000 min
Exp R.T. : 5.543 min
Response: 0
Conc: N.D.

Instrument :
ECD_O
ClientSampleId :
CON-163



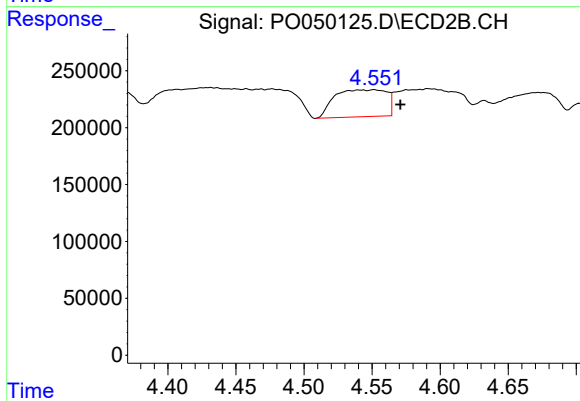
#17 AR-1242-2

R.T.: 4.431 min
Delta R.T.: 0.026 min
Response: 753767
Conc: 94.82 ng/ml



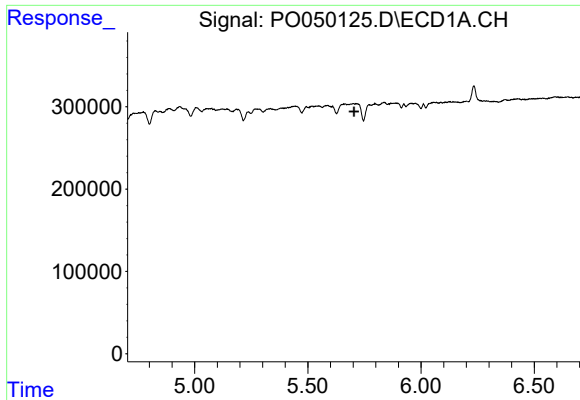
#18 AR-1242-3

R.T.: 0.000 min
Exp R.T. : 5.605 min
Response: 0
Conc: N.D.



#18 AR-1242-3

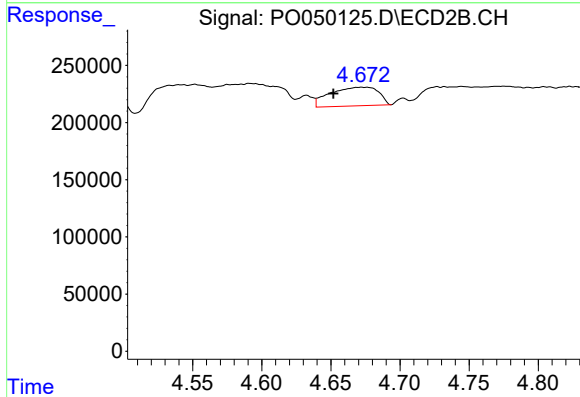
R.T.: 4.551 min
Delta R.T.: -0.019 min
Response: 631776
Conc: 157.11 ng/ml



#19 AR-1242-4

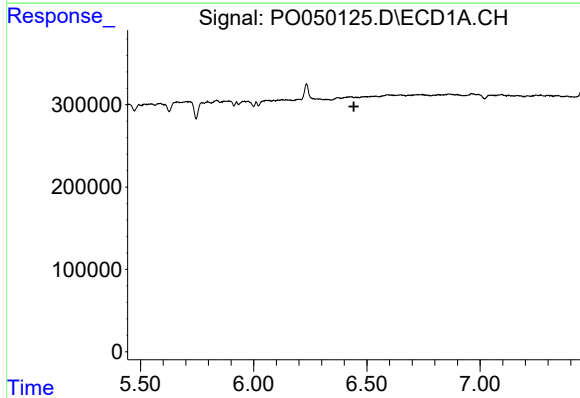
R.T.: 0.000 min
 Exp R.T. : 5.704 min
 Response: 0
 Conc: N.D.

Instrument :
 ECD_O
ClientSampled :
 CON-163



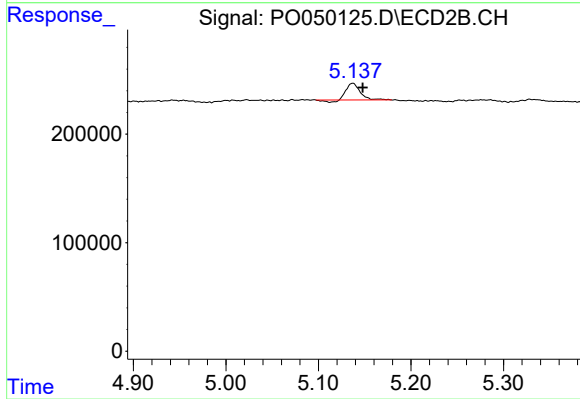
#19 AR-1242-4

R.T.: 4.672 min
 Delta R.T.: 0.020 min
 Response: 399392
 Conc: 96.10 ng/ml



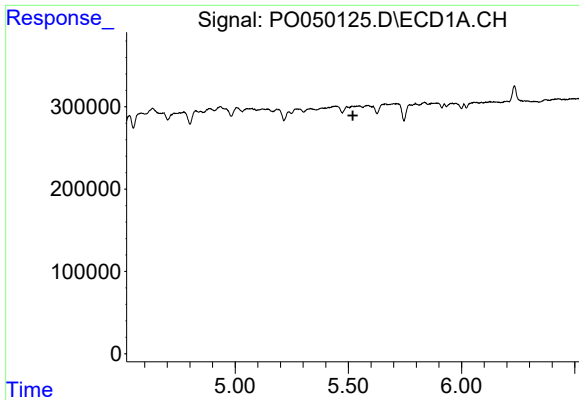
#20 AR-1242-5

R.T.: 0.000 min
 Exp R.T. : 6.442 min
 Response: 0
 Conc: N.D.



#20 AR-1242-5

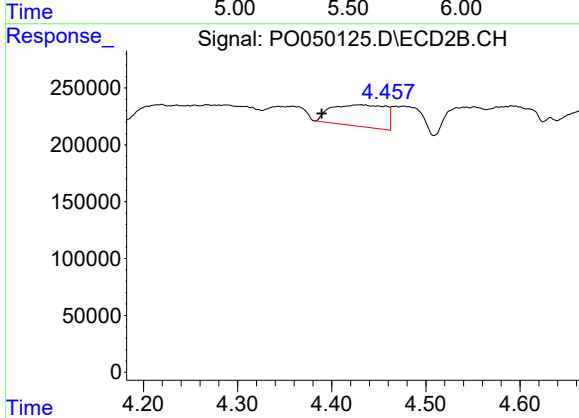
R.T.: 5.137 min
 Delta R.T.: -0.011 min
 Response: 146600
 Conc: 31.05 ng/ml



#21 AR-1248-1

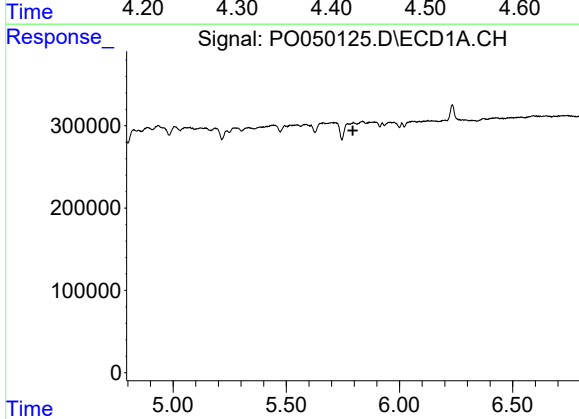
R.T.: 0.000 min
 Exp R.T.: 5.520 min
 Response: 0
 Conc: N.D.

Instrument :
 ECD_O
ClientSampled :
 CON-163



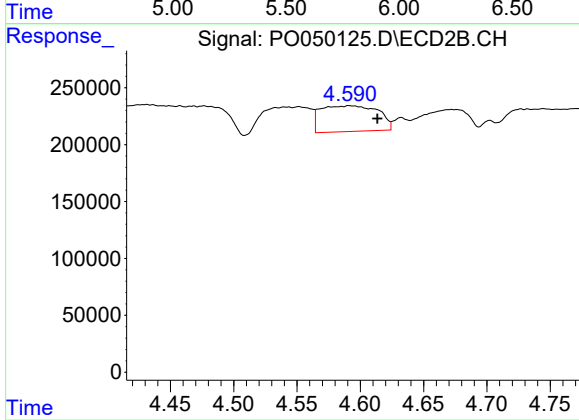
#21 AR-1248-1

R.T.: 4.431 min
 Delta R.T.: 0.042 min
 Response: 753767
 Conc: 191.96 ng/ml



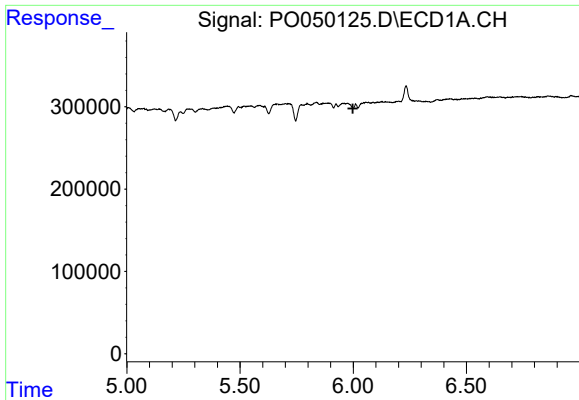
#22 AR-1248-2

R.T.: 0.000 min
 Exp R.T.: 5.794 min
 Response: 0
 Conc: N.D.



#22 AR-1248-2

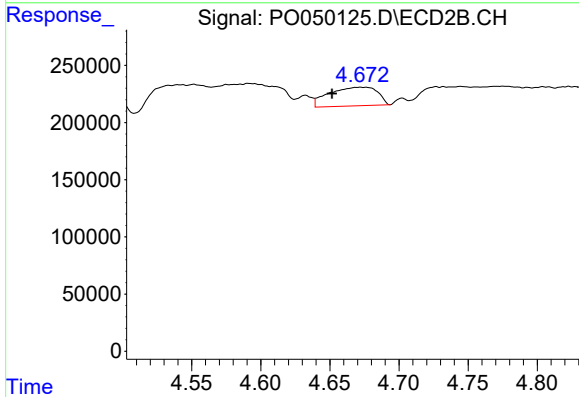
R.T.: 4.591 min
 Delta R.T.: -0.022 min
 Response: 714961
 Conc: 117.95 ng/ml



#23 AR-1248-3

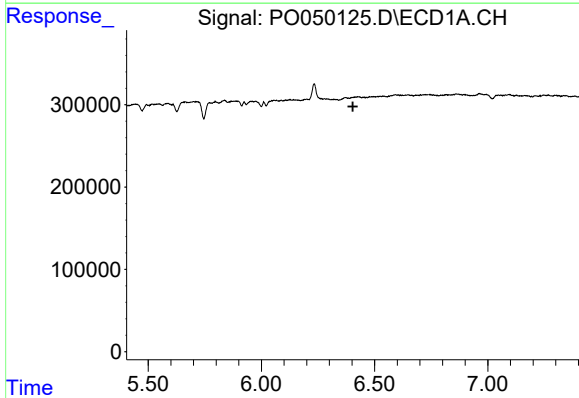
R.T.: 0.000 min
 Exp R.T.: 5.998 min
 Response: 0
 Conc: N.D.

Instrument :
 ECD_O
 ClientSampleId :
 CON-163



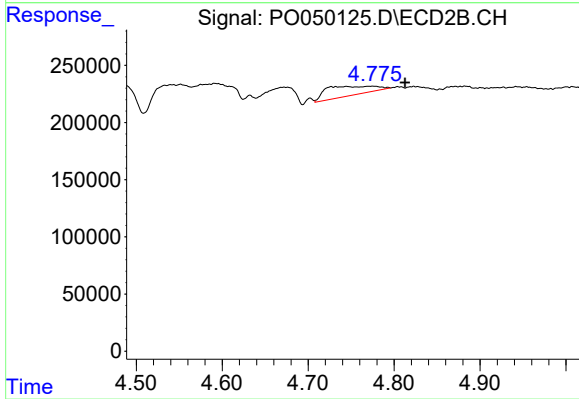
#23 AR-1248-3

R.T.: 4.672 min
 Delta R.T.: 0.020 min
 Response: 399392
 Conc: 65.61 ng/ml



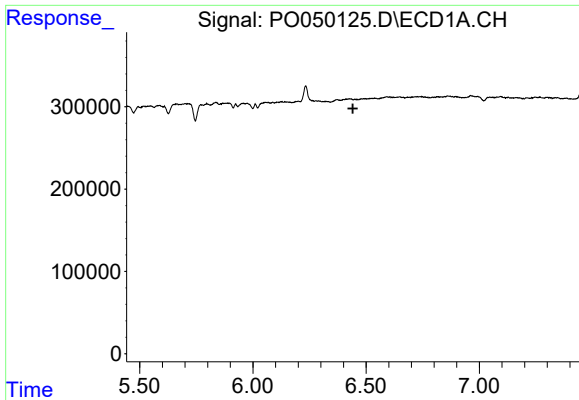
#24 AR-1248-4

R.T.: 0.000 min
 Exp R.T.: 6.404 min
 Response: 0
 Conc: N.D.



#24 AR-1248-4

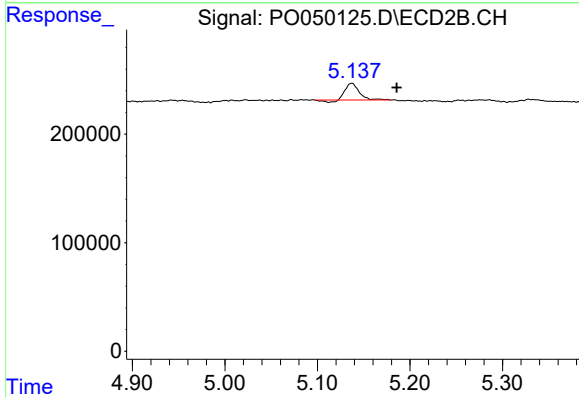
R.T.: 4.775 min
 Delta R.T.: -0.037 min
 Response: 323070
 Conc: 43.11 ng/ml



#25 AR-1248-5

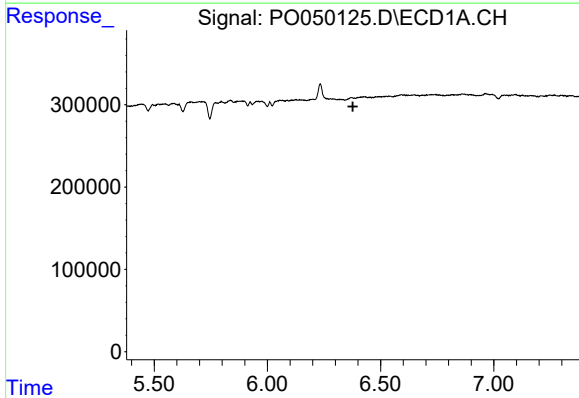
R.T.: 0.000 min
 Exp R.T.: 6.442 min
 Response: 0
 Conc: N.D.

Instrument :
 ECD_O
 ClientSampled :
 CON-163



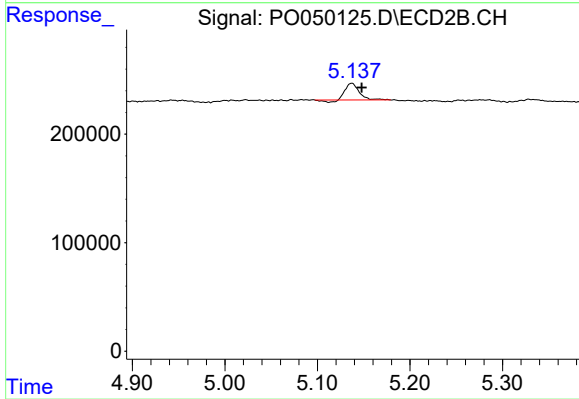
#25 AR-1248-5

R.T.: 5.137 min
 Delta R.T.: -0.049 min
 Response: 146600
 Conc: 21.03 ng/ml



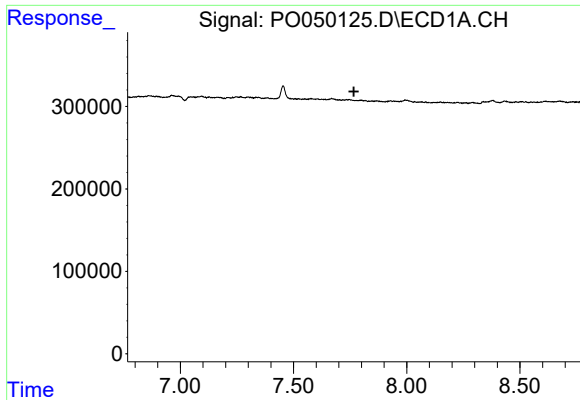
#26 AR-1254-1

R.T.: 0.000 min
 Exp R.T.: 6.377 min
 Response: 0
 Conc: N.D.



#26 AR-1254-1

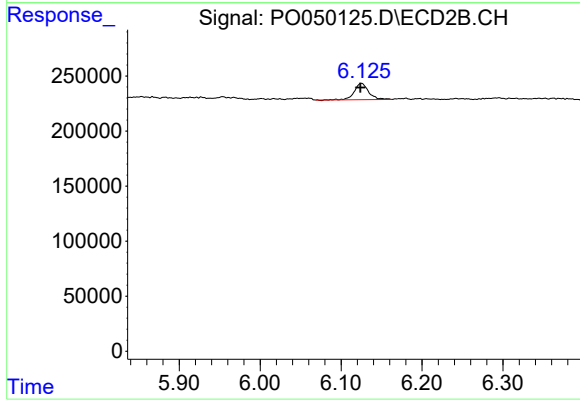
R.T.: 5.137 min
 Delta R.T.: -0.011 min
 Response: 146600
 Conc: 10.95 ng/ml



#33 AR-1260-3

R.T.: 0.000 min
 Exp R.T.: 7.767 min
 Response: 0
 Conc: N.D.

Instrument :
 ECD_O
ClientSampled :
 CON-163



#33 AR-1260-3

R.T.: 6.125 min
 Delta R.T.: 0.001 min
 Response: 181555
 Conc: 11.22 ng/ml