

Data Path : Z:\pestpcbsrv\HPCHEM1\ECD_0\Data\PO101618\
 Data File : P0050077.D
 Signal(s) : Signal #1: ECD1A.CH Signal #2: ECD2B.CH
 Acq On : 16 Oct 2018 12:15
 Operator : SM/SJ
 Sample : J5197-01
 Misc :
 ALS Vial : 5 Sample Multiplier: 1

Instrument :
 ECD_0
 ClientSampleId :
 HD-01-101118

Integration File signal 1: autoint1.e
 Integration File signal 2: autoint2.e
 Quant Time: Oct 16 12:31:31 2018
 Quant Method : Z:\pestpcbsrv\HPCHEM1\ECD_0\methods\PO101518.M
 Quant Title : GC EXTRACTABLES
 QLast Update : Mon Oct 15 16:37:53 2018
 Response via : Initial Calibration
 Integrator: ChemStation 6890 Scale Mode: Small noise peaks clipped

Volume Inj. : 2 µl
 Signal #1 Phase : ZB-MR1 Signal #2 Phase: ZB-MR2
 Signal #1 Info : 30Mx0.32mmx 0.50µ Signal #2 Info : 30M x 0.32mm x 0.25µm

| Compound | RT#1 | RT#2 | Resp#1 | Resp#2 | ng/ml | ng/ml |
|----------|------|------|--------|--------|-------|-------|
|----------|------|------|--------|--------|-------|-------|

 System Monitoring Compounds

| | | | | | | |
|--------------------|--------|-------|---------|---------|--------|--------|
| 1) SA Tetrachlo... | 4.330 | 3.362 | 3527542 | 2954642 | 14.319 | 15.080 |
| 2) SA Decachlor... | 10.073 | 8.124 | 1738875 | 1913134 | 9.237m | 11.125 |

Target Compounds

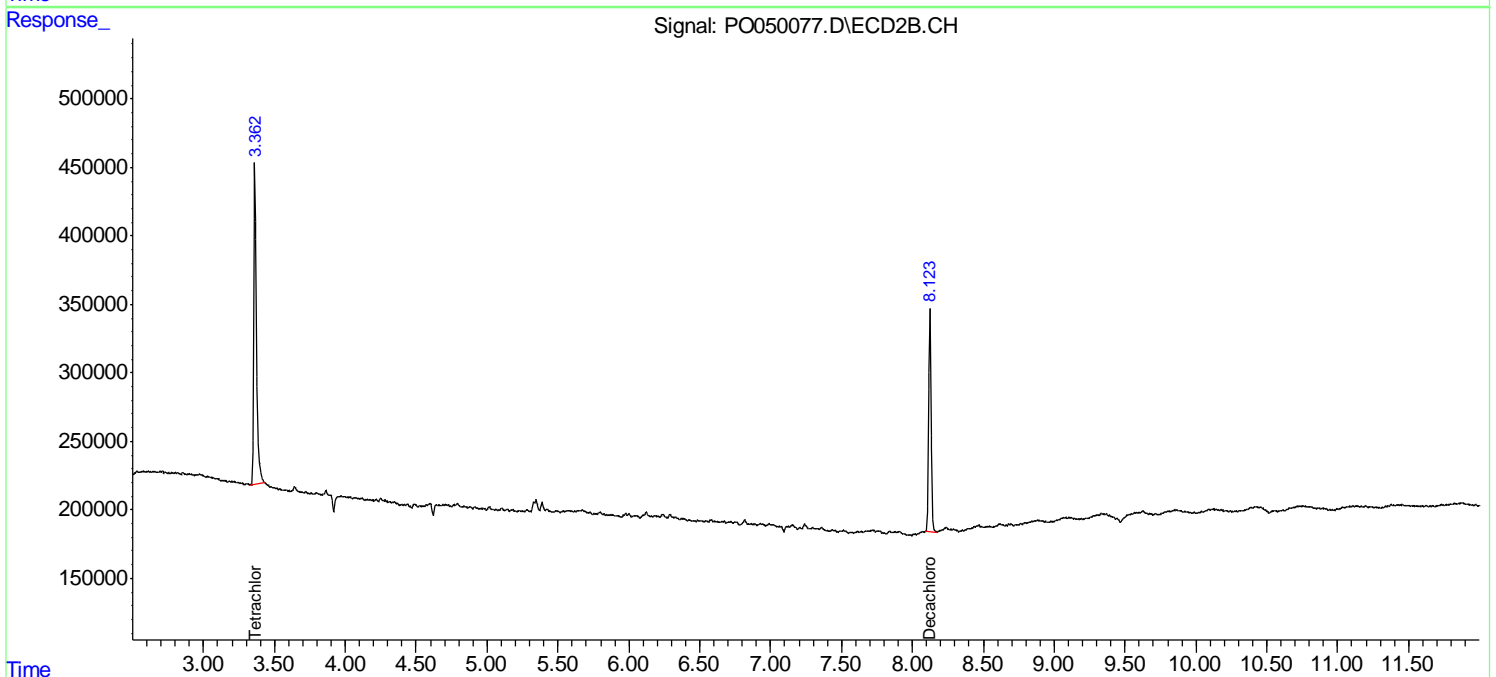
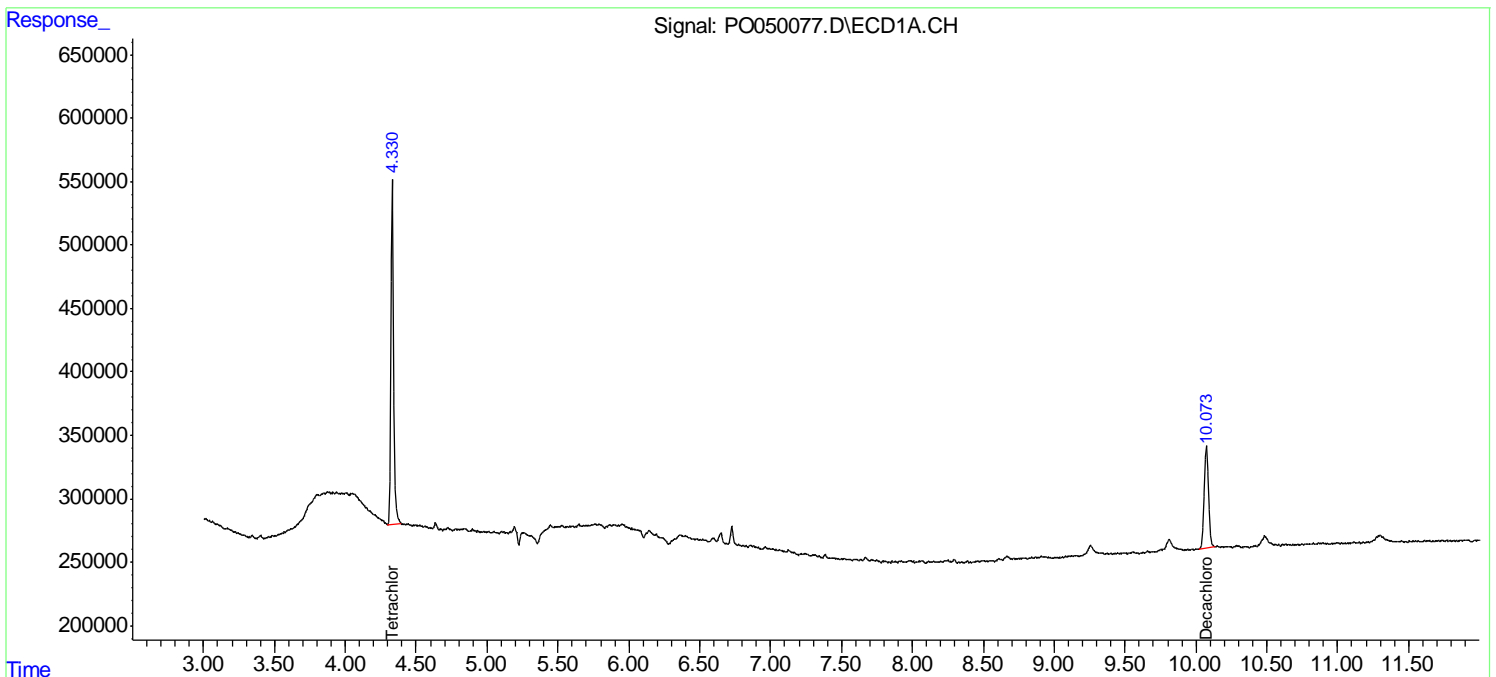
(f)=RT Delta > 1/2 Window (#)=Amounts differ by > 25% (m)=manual int.

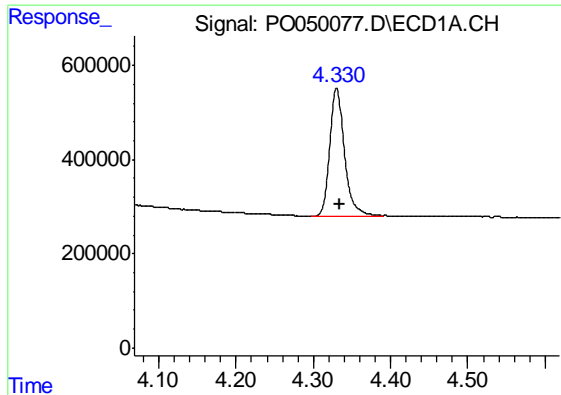
Data Path : Z:\pestpcbsrv\HPCHEM1\ECD_O\Data\PO101618\
 Data File : PO050077.D
 Signal(s) : Signal #1: ECD1A.CH Signal #2: ECD2B.CH
 Acq On : 16 Oct 2018 12:15
 Operator : SM/SJ
 Sample : J5197-01
 Misc :
 ALS Vial : 5 Sample Multiplier: 1

Instrument :
 ECD_O
 ClientSampleId :
 HD-01-101118

Integration File signal 1: autoint1.e
 Integration File signal 2: autoint2.e
 Quant Time: Oct 16 12:31:31 2018
 Quant Method : Z:\pestpcbsrv\HPCHEM1\ECD_O\methods\PO101518.M
 Quant Title : GC EXTRACTABLES
 QLast Update : Mon Oct 15 16:37:53 2018
 Response via : Initial Calibration
 Integrator: ChemStation 6890 Scale Mode: Small noise peaks clipped

Volume Inj. : 2 µl
 Signal #1 Phase : ZB-MR1 Signal #2 Phase: ZB-MR2
 Signal #1 Info : 30Mx0.32mmx 0.50µ Signal #2 Info : 30M x 0.32mm x 0.25µm

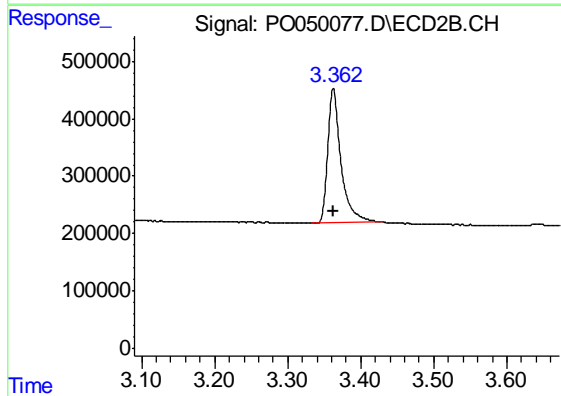




#1 Tetrachloro-m-xylene

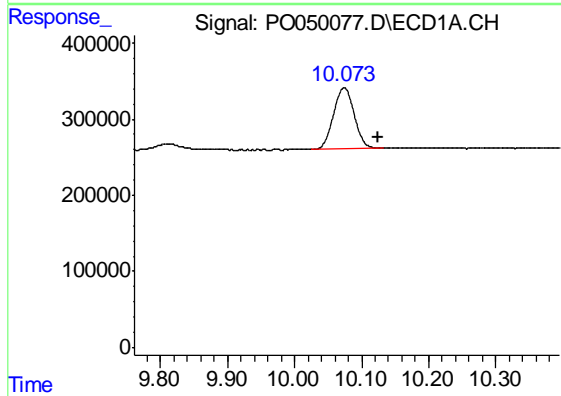
R.T.: 4.330 min
 Delta R.T.: -0.004 min
 Response: 3527542
 Conc: 14.32 ng/ml

Instrument :
 ECD_O
 ClientSampleId :
 HD-01-101118



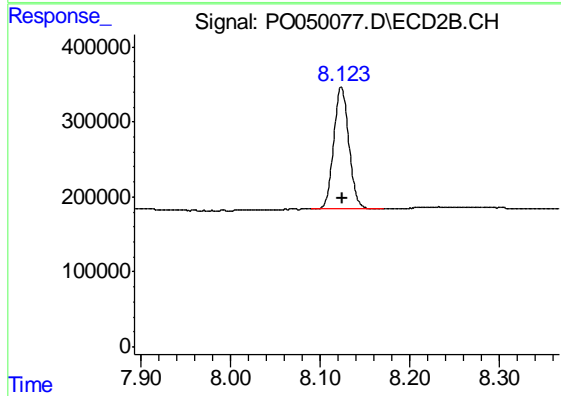
#1 Tetrachloro-m-xylene

R.T.: 3.362 min
 Delta R.T.: 0.000 min
 Response: 2954642
 Conc: 15.08 ng/ml



#2 Decachlorobiphenyl

R.T.: 10.073 min
 Delta R.T.: -0.051 min
 Response: 1738875
 Conc: 9.24 ng/ml m



#2 Decachlorobiphenyl

R.T.: 8.124 min
 Delta R.T.: -0.002 min
 Response: 1913134
 Conc: 11.13 ng/ml