

Data Path : Z:\pestpcbsrv\HPCHEM1\ECD_0\Data\PO101618\
 Data File : P0050089.D
 Signal(s) : Signal #1: ECD1A.CH Signal #2: ECD2B.CH
 Acq On : 16 Oct 2018 16:23
 Operator : SM/SJ
 Sample : I.BLK
 Misc :
 ALS Vial : 2 Sample Multiplier: 1

Instrument :
 ECD_0
 ClientSampleId :
 I.BLK

Integration File signal 1: autoint1.e
 Integration File signal 2: autoint2.e
 Quant Time: Oct 17 05:57:33 2018
 Quant Method : Z:\pestpcbsrv\HPCHEM1\ECD_0\methods\PO101518.M
 Quant Title : GC EXTRACTABLES
 QLast Update : Mon Oct 15 16:37:53 2018
 Response via : Initial Calibration
 Integrator: ChemStation 6890 Scale Mode: Small noise peaks clipped

Volume Inj. : 2 µl
 Signal #1 Phase : ZB-MR1 Signal #2 Phase: ZB-MR2
 Signal #1 Info : 30Mx0.32mmx 0.50µ Signal #2 Info : 30M x 0.32mm x 0.25µm

Compound	RT#1	RT#2	Resp#1	Resp#2	ng/ml	ng/ml
----------	------	------	--------	--------	-------	-------

 System Monitoring Compounds

1) SA Tetrachlo...	4.330	3.363	5068037	4141809	20.573	21.140
2) SA Decachlor...	10.073	8.122	3609234	4138989	19.172	24.069 #

Target Compounds

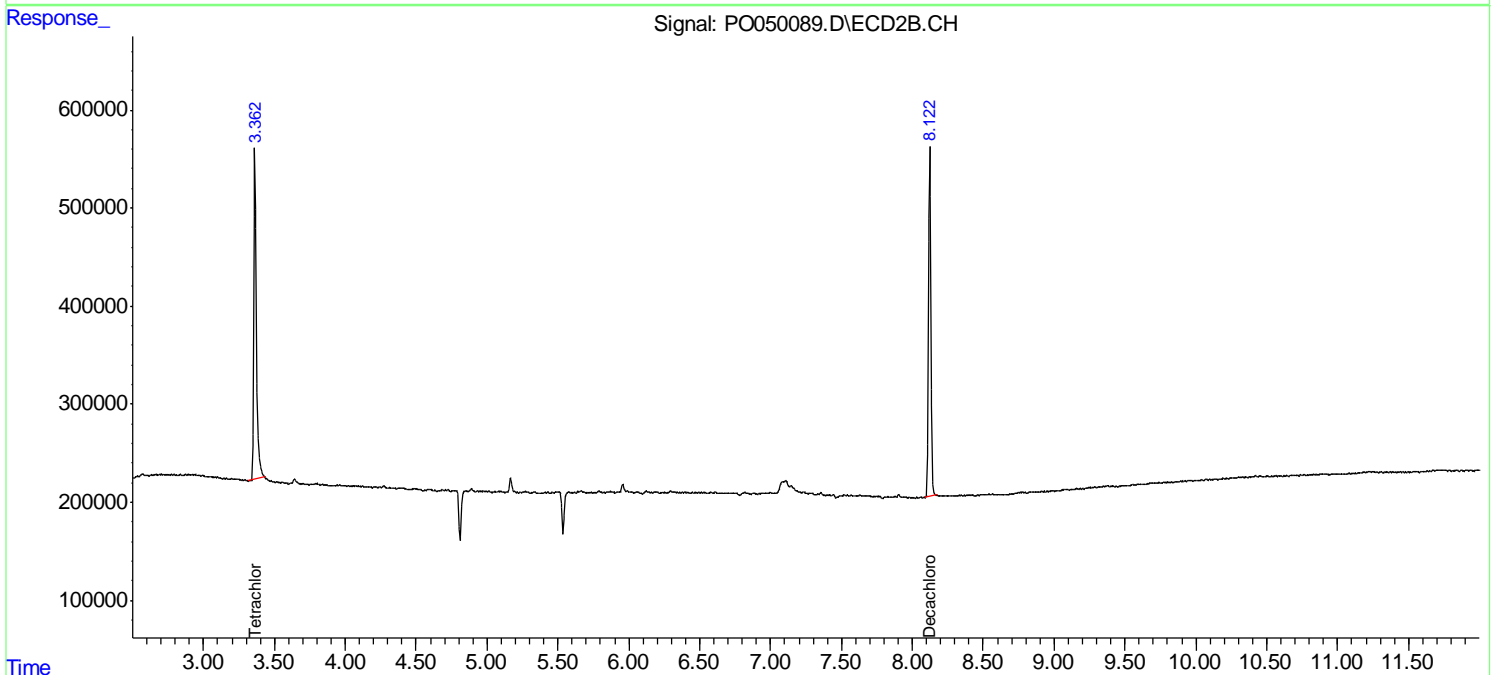
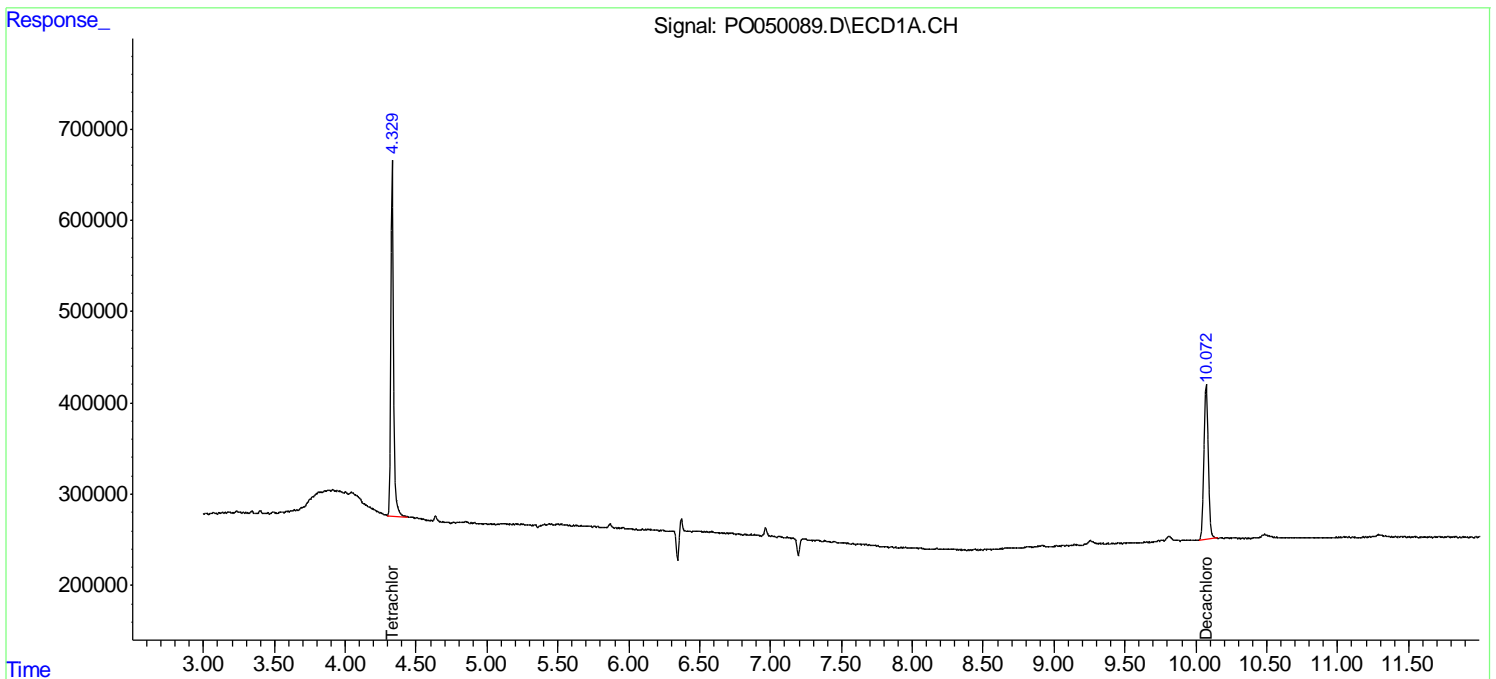
(f)=RT Delta > 1/2 Window (#)=Amounts differ by > 25% (m)=manual int.

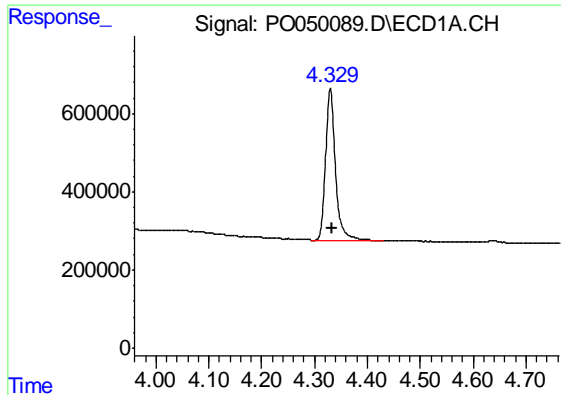
Data Path : Z:\pestpcbsrv\HPCHEM1\ECD_O\Data\PO101618\
 Data File : PO050089.D
 Signal(s) : Signal #1: ECD1A.CH Signal #2: ECD2B.CH
 Acq On : 16 Oct 2018 16:23
 Operator : SM/SJ
 Sample : I.BLK
 Misc :
 ALS Vial : 2 Sample Multiplier: 1

Instrument :
 ECD_O
 ClientSampled :
 I.BLK

Integration File signal 1: autoint1.e
 Integration File signal 2: autoint2.e
 Quant Time: Oct 17 05:57:33 2018
 Quant Method : Z:\pestpcbsrv\HPCHEM1\ECD_O\methods\PO101518.M
 Quant Title : GC EXTRACTABLES
 QLast Update : Mon Oct 15 16:37:53 2018
 Response via : Initial Calibration
 Integrator: ChemStation 6890 Scale Mode: Small noise peaks clipped

Volume Inj. : 2 µl
 Signal #1 Phase : ZB-MR1 Signal #2 Phase: ZB-MR2
 Signal #1 Info : 30Mx0.32mmx 0.50µ Signal #2 Info : 30M x 0.32mm x 0.25µm

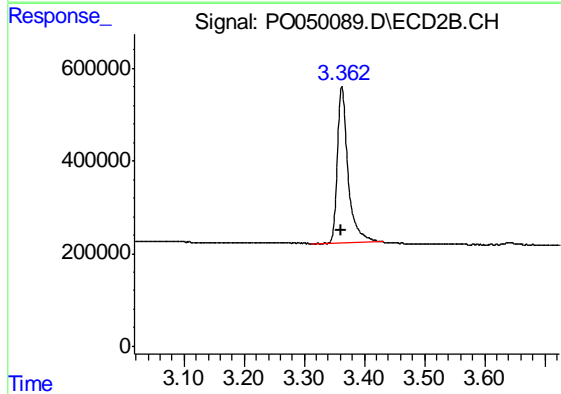




#1 Tetrachloro-m-xylene

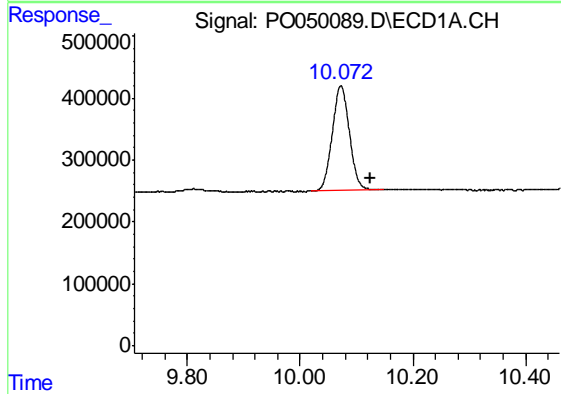
R.T.: 4.330 min
 Delta R.T.: -0.004 min
 Response: 5068037
 Conc: 20.57 ng/ml

Instrument :
 ECD_O
 ClientSampleId :
 I.BLK



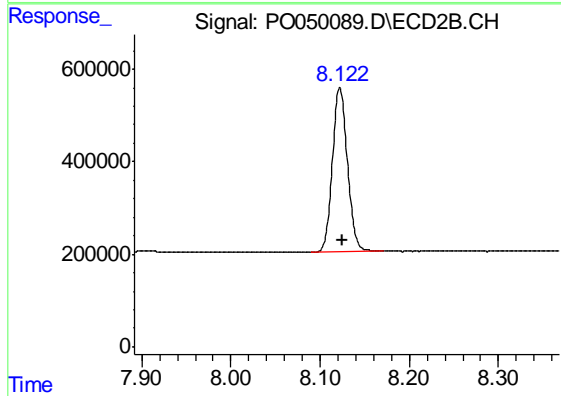
#1 Tetrachloro-m-xylene

R.T.: 3.363 min
 Delta R.T.: 0.000 min
 Response: 4141809
 Conc: 21.14 ng/ml



#2 Decachlorobiphenyl

R.T.: 10.073 min
 Delta R.T.: -0.052 min
 Response: 3609234
 Conc: 19.17 ng/ml



#2 Decachlorobiphenyl

R.T.: 8.122 min
 Delta R.T.: -0.003 min
 Response: 4138989
 Conc: 24.07 ng/ml