

Data Path : Z:\pestpcbsrv\HPCHEM1\ECD\_O\Data\PO101618\  
 Data File : P0050097.D  
 Signal(s) : Signal #1: ECD1A.CH Signal #2: ECD2B.CH  
 Acq On : 16 Oct 2018 19:03  
 Operator : SM/SJ  
 Sample : J5511-03  
 Misc :  
 ALS Vial : 11 Sample Multiplier: 1

Instrument :  
 ECD\_O  
 ClientSampleId :  
 101118-SIDI-F-D-S

Manual Integrations  
 APPROVED

sohil  
 10/18/2018 5:12:59 PM

Integration File signal 1: autoint1.e  
 Integration File signal 2: autoint2.e  
 Quant Time: Oct 17 06:41:31 2018  
 Quant Method : Z:\pestpcbsrv\HPCHEM1\ECD\_O\methods\PO101518.M  
 Quant Title : GC EXTRACTABLES  
 QLast Update : Mon Oct 15 16:37:53 2018  
 Response via : Initial Calibration  
 Integrator: ChemStation 6890 Scale Mode: Small noise peaks clipped

Volume Inj. : 2 µl  
 Signal #1 Phase : ZB-MR1 Signal #2 Phase: ZB-MR2  
 Signal #1 Info : 30Mx0.32mmx 0.50µ Signal #2 Info : 30M x 0.32mm x 0.25µm

Compound	RT#1	RT#2	Resp#1	Resp#2	ng/ml	ng/ml
----------	------	------	--------	--------	-------	-------

-----  
 System Monitoring Compounds

1) SA Tetrachlo...	4.324	3.361	3478190	2975942	14.119	15.189
2) SA Decachlor...	10.051	8.122	4794419	3882779	25.468m	22.579

Target Compounds  
 -----

(f)=RT Delta > 1/2 Window (#)=Amounts differ by > 25% (m)=manual int.

Data Path : Z:\pestpcbsrv\HPCHEM1\ECD\_O\Data\PO101618\  
 Data File : PO050097.D  
 Signal(s) : Signal #1: ECD1A.CH Signal #2: ECD2B.CH  
 Acq On : 16 Oct 2018 19:03  
 Operator : SM/SJ  
 Sample : J5511-03  
 Misc :  
 ALS Vial : 11 Sample Multiplier: 1

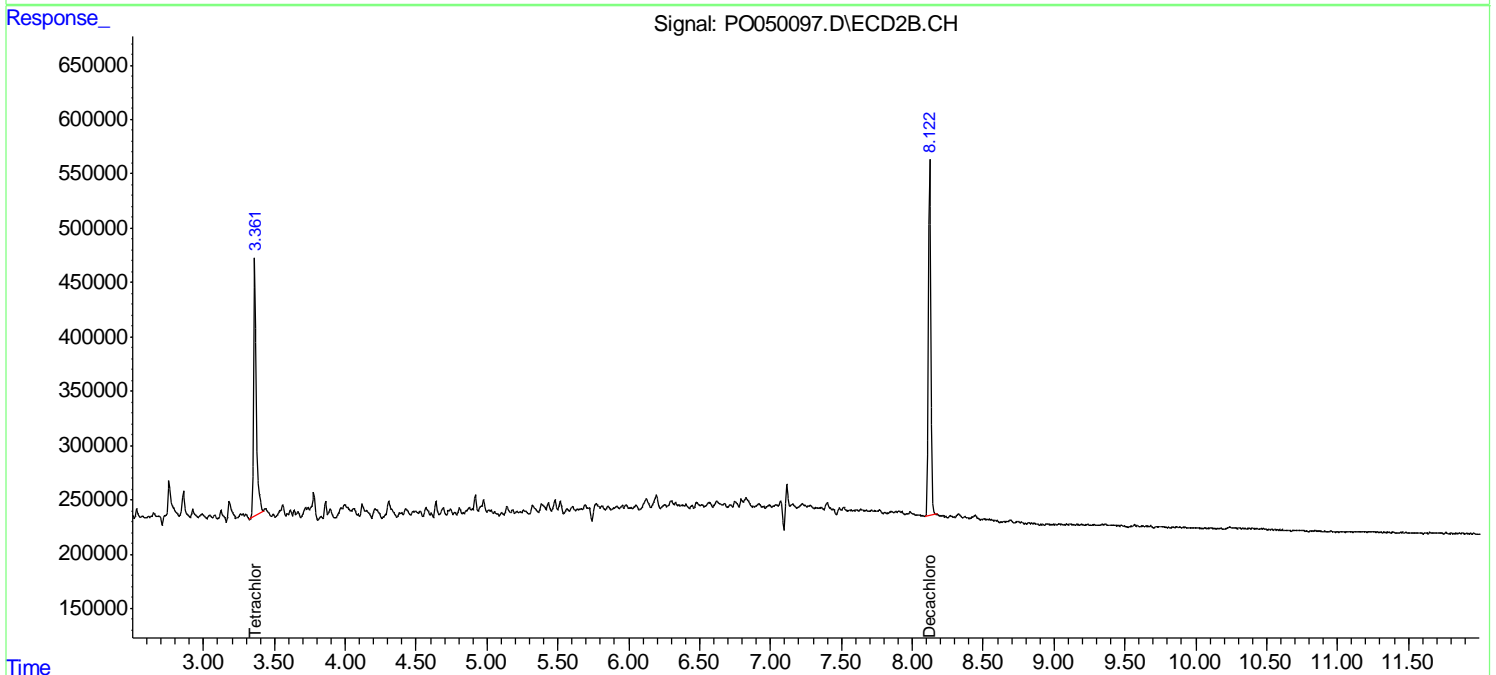
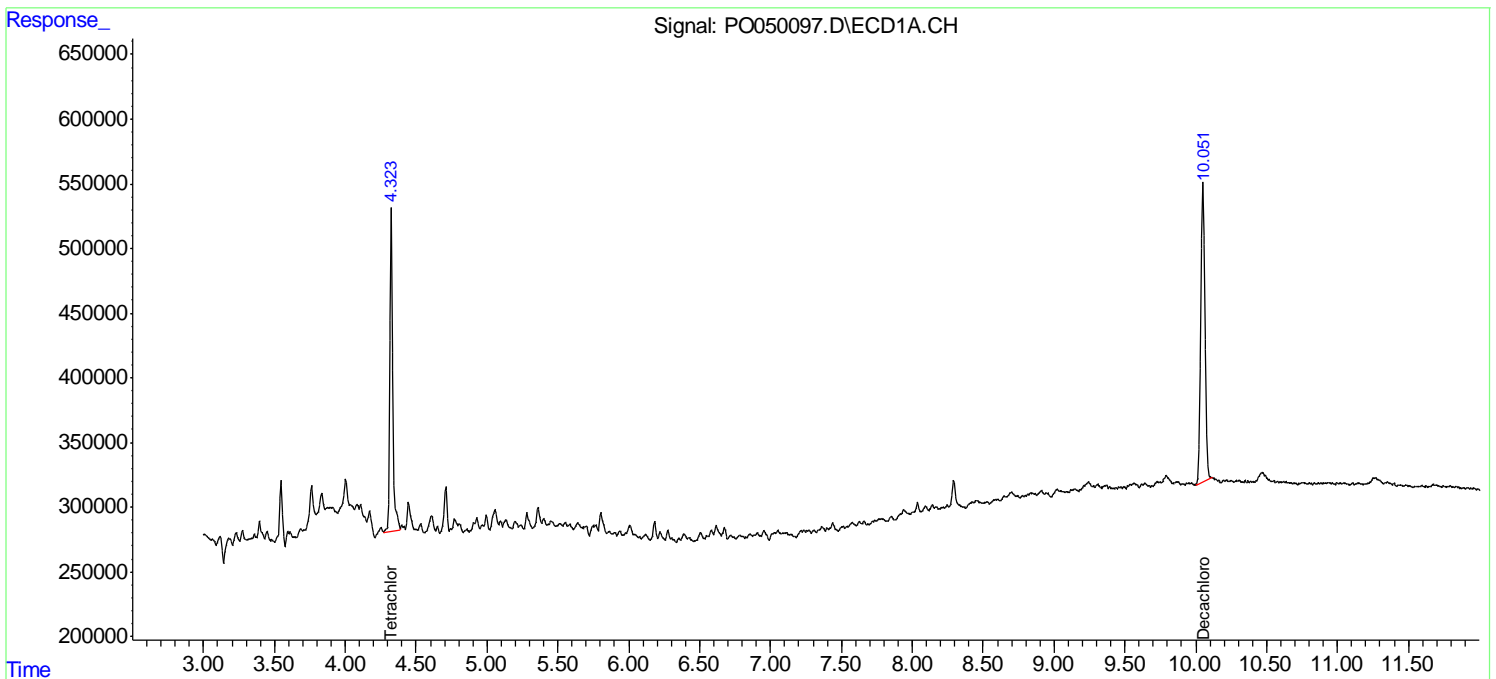
Instrument :  
 ECD\_O  
 ClientSampleId :  
 101118-SIDI-F-D-S

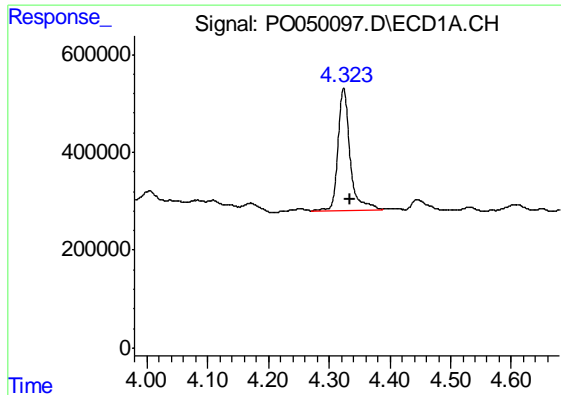
Manual Integrations  
 APPROVED

sohil  
 10/18/2018 5:12:59 PM

Integration File signal 1: autoint1.e  
 Integration File signal 2: autoint2.e  
 Quant Time: Oct 17 06:41:31 2018  
 Quant Method : Z:\pestpcbsrv\HPCHEM1\ECD\_O\methods\PO101518.M  
 Quant Title : GC EXTRACTABLES  
 QLast Update : Mon Oct 15 16:37:53 2018  
 Response via : Initial Calibration  
 Integrator: ChemStation 6890 Scale Mode: Small noise peaks clipped

Volume Inj. : 2 µl  
 Signal #1 Phase : ZB-MR1 Signal #2 Phase: ZB-MR2  
 Signal #1 Info : 30Mx0.32mmx 0.50µ Signal #2 Info : 30M x 0.32mm x 0.25µm





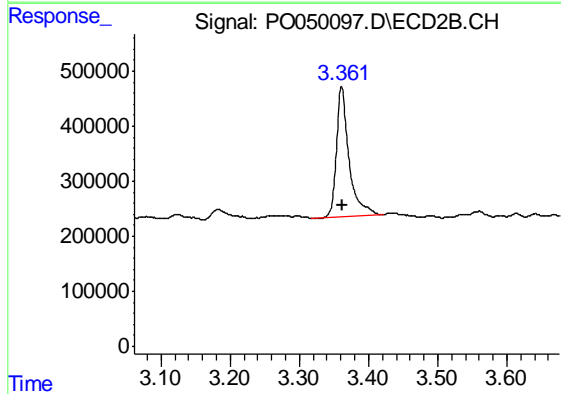
#1 Tetrachloro-m-xylene

R.T.: 4.324 min  
Delta R.T.: -0.010 min  
Response: 3478190  
Conc: 14.12 ng/ml

Instrument :  
ECD\_O  
ClientSampleId :  
101118-SIDI-F-D-S

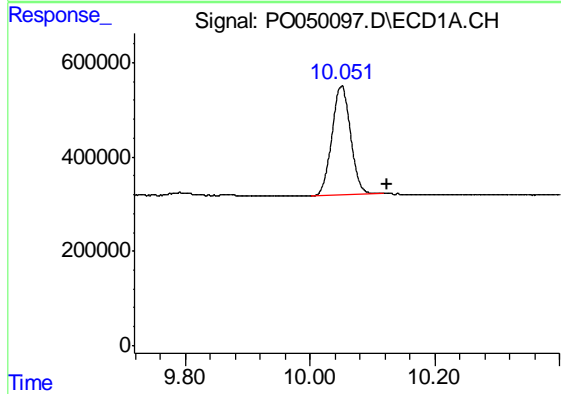
Manual Integrations  
APPROVED

sohil  
10/18/2018 5:12:59 PM



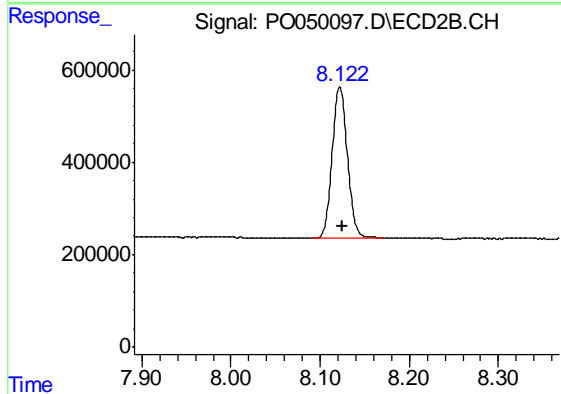
#1 Tetrachloro-m-xylene

R.T.: 3.361 min  
Delta R.T.: -0.001 min  
Response: 2975942  
Conc: 15.19 ng/ml



#2 Decachlorobiphenyl

R.T.: 10.051 min  
Delta R.T.: -0.073 min  
Response: 4794419  
Conc: 25.47 ng/ml m



#2 Decachlorobiphenyl

R.T.: 8.122 min  
Delta R.T.: -0.003 min  
Response: 3882779  
Conc: 22.58 ng/ml