

Data Path : Z:\pestpcbsrv\HPCHEM1\ECD_0\Data\PO101618\
 Data File : P0050098.D
 Signal(s) : Signal #1: ECD1A.CH Signal #2: ECD2B.CH
 Acq On : 16 Oct 2018 19:22
 Operator : SM/SJ
 Sample : J5511-04
 Misc :
 ALS Vial : 12 Sample Multiplier: 1

Instrument :
 ECD_0
 ClientSampleId :
 101118-SIDI-F-U-B

Manual Integrations
 APPROVED

sohil
 10/18/2018 5:13:00 PM

Integration File signal 1: autoint1.e
 Integration File signal 2: autoint2.e
 Quant Time: Oct 17 06:41:47 2018
 Quant Method : Z:\pestpcbsrv\HPCHEM1\ECD_0\methods\PO101518.M
 Quant Title : GC EXTRACTABLES
 QLast Update : Mon Oct 15 16:37:53 2018
 Response via : Initial Calibration
 Integrator: ChemStation 6890 Scale Mode: Small noise peaks clipped

Volume Inj. : 2 µl
 Signal #1 Phase : ZB-MR1 Signal #2 Phase: ZB-MR2
 Signal #1 Info : 30Mx0.32mmx 0.50µ Signal #2 Info : 30M x 0.32mm x 0.25µm

Compound	RT#1	RT#2	Resp#1	Resp#2	ng/ml	ng/ml
----------	------	------	--------	--------	-------	-------

 System Monitoring Compounds

1) SA Tetrachlo...	4.323	3.362	4156507	3672844	16.873	18.746
2) SA Decachlor...	10.050	8.122	5503309	4349166	29.234m	25.291

Target Compounds

(f)=RT Delta > 1/2 Window (#)=Amounts differ by > 25% (m)=manual int.

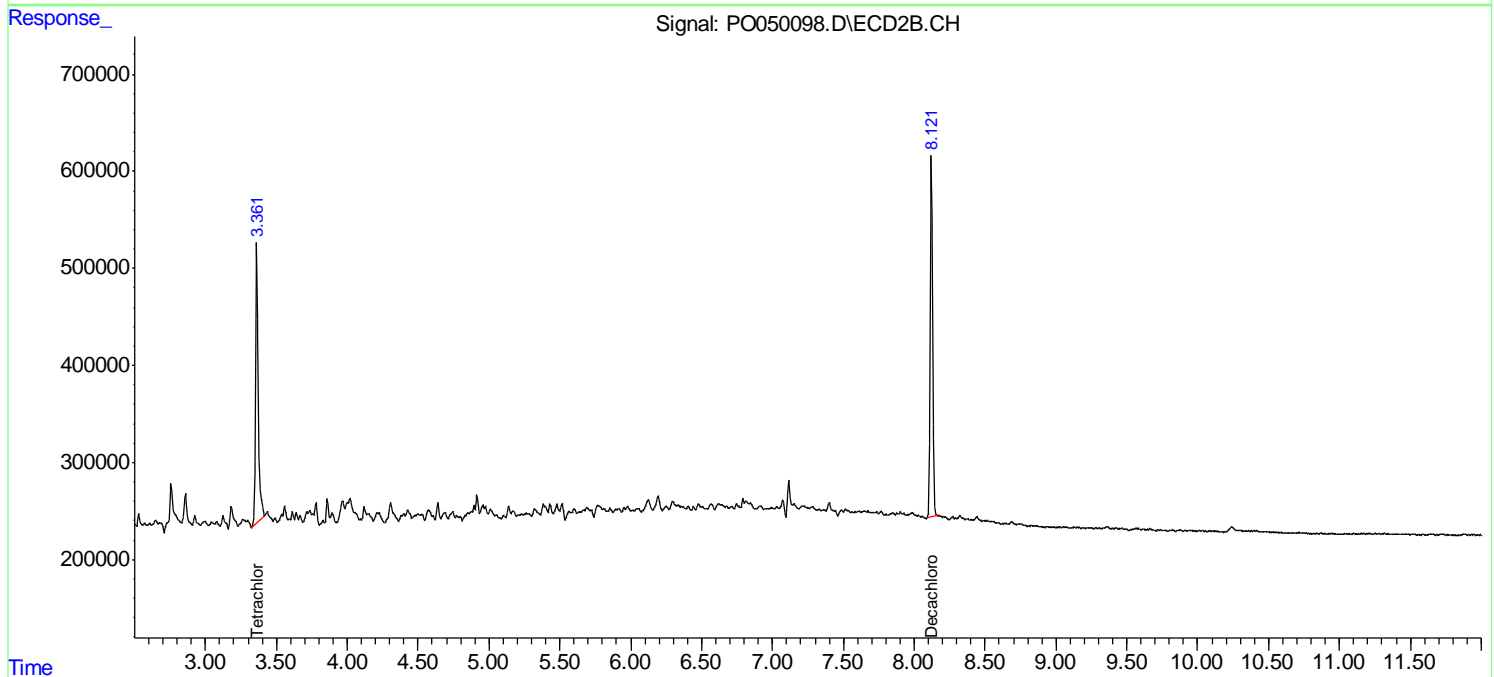
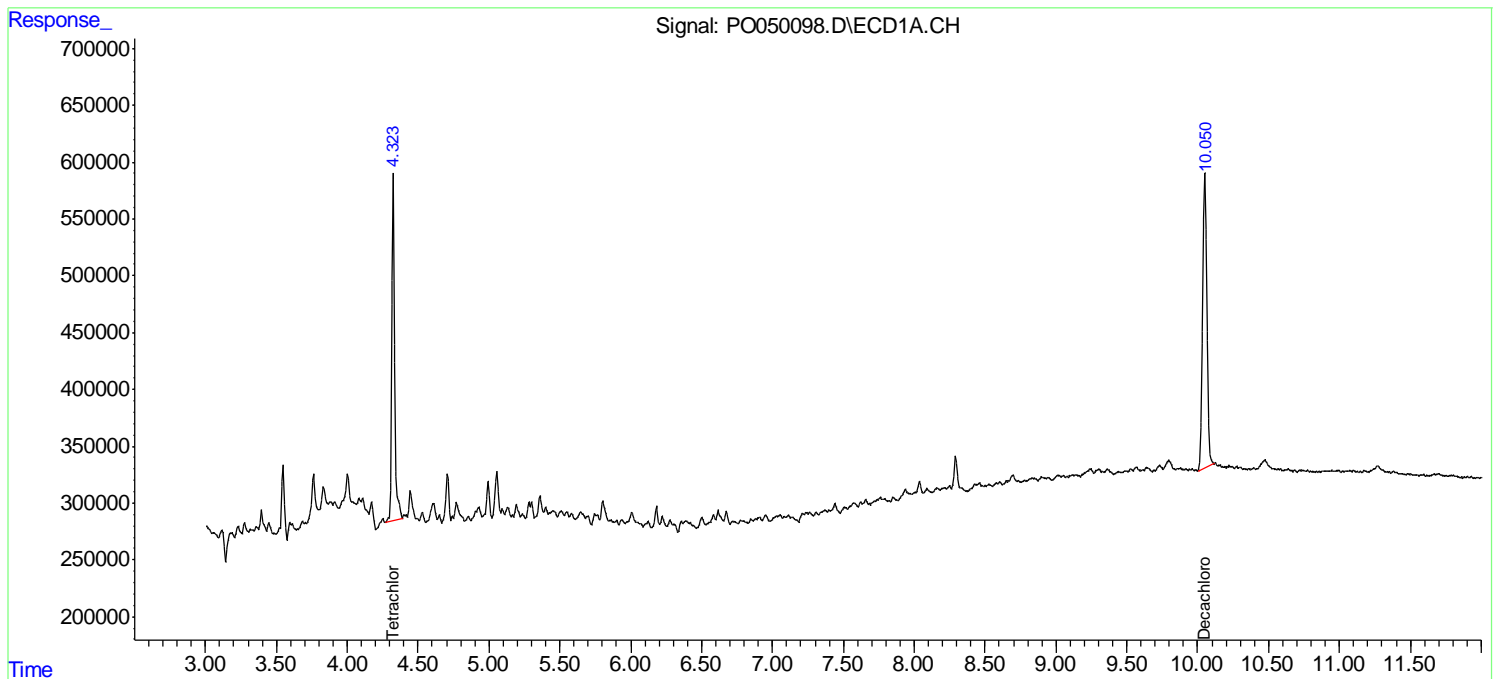
Data Path : Z:\pestpcbsrv\HPCHEM1\ECD_O\Data\PO101618\
 Data File : PO050098.D
 Signal(s) : Signal #1: ECD1A.CH Signal #2: ECD2B.CH
 Acq On : 16 Oct 2018 19:22
 Operator : SM/SJ
 Sample : J5511-04
 Misc :
 ALS Vial : 12 Sample Multiplier: 1

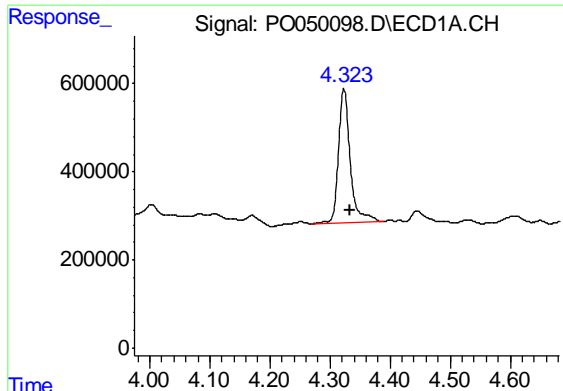
Instrument :
 ECD_O
ClientSampled :
 101118-SIDI-F-U-B

Manual Integrations
APPROVED
 sohil
 10/18/2018 5:13:00 PM

Integration File signal 1: autoint1.e
 Integration File signal 2: autoint2.e
 Quant Time: Oct 17 06:41:47 2018
 Quant Method : Z:\pestpcbsrv\HPCHEM1\ECD_O\methods\PO101518.M
 Quant Title : GC EXTRACTABLES
 QLast Update : Mon Oct 15 16:37:53 2018
 Response via : Initial Calibration
 Integrator: ChemStation 6890 Scale Mode: Small noise peaks clipped

Volume Inj. : 2 µl
 Signal #1 Phase : ZB-MR1 Signal #2 Phase: ZB-MR2
 Signal #1 Info : 30Mx0.32mmx 0.50µ Signal #2 Info : 30M x 0.32mm x 0.25µm





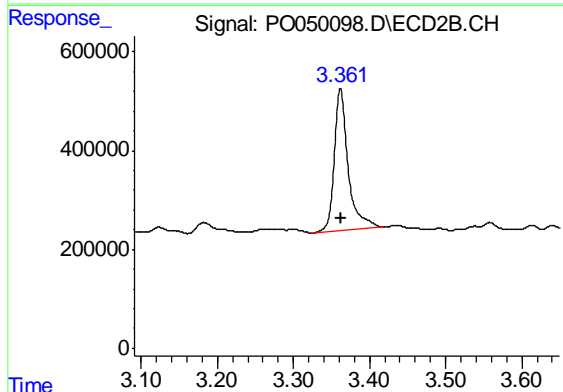
#1 Tetrachloro-m-xylene

R.T.: 4.323 min
Delta R.T.: -0.011 min
Response: 4156507
Conc: 16.87 ng/ml

Instrument :
ECD_O
ClientSampleId :
101118-SIDI-F-U-B

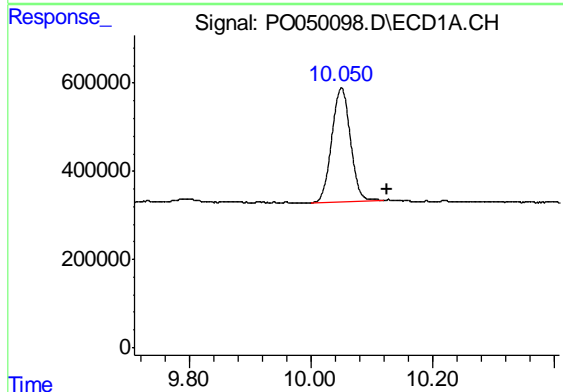
Manual Integrations
APPROVED

sohil
10/18/2018 5:13:00 PM



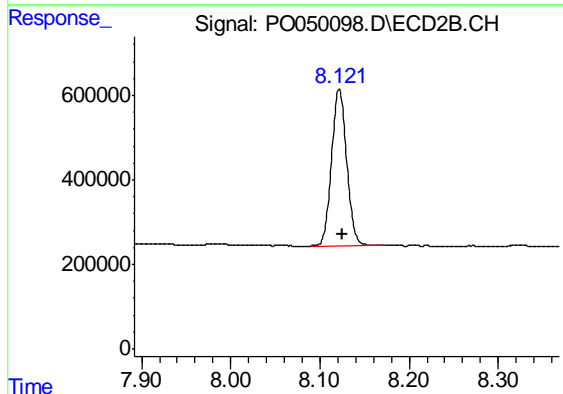
#1 Tetrachloro-m-xylene

R.T.: 3.362 min
Delta R.T.: 0.000 min
Response: 3672844
Conc: 18.75 ng/ml



#2 Decachlorobiphenyl

R.T.: 10.050 min
Delta R.T.: -0.075 min
Response: 5503309
Conc: 29.23 ng/ml m



#2 Decachlorobiphenyl

R.T.: 8.122 min
Delta R.T.: -0.004 min
Response: 4349166
Conc: 25.29 ng/ml