

Data Path : Z:\pestpcbsrv\HPCHEM1\ECD\_O\Data\PO101619\  
 Data File : P0062053.D  
 Signal(s) : Signal #1: ECD1A.CH Signal #2: ECD2B.CH  
 Acq On : 16 Oct 2019 15:11  
 Operator : HP/AJ  
 Sample : K5111-08  
 Misc : AR1262-LOQ-50PPB-WATER  
 ALS Vial : 19 Sample Multiplier: 1

**Instrument :**  
 ECD\_O  
**ClientSampleId :**  
 LOQ-WATER-02-QT4-2019

Integration File signal 1: autoint1.e  
 Integration File signal 2: autoint2.e  
 Quant Time: Oct 17 07:08:50 2019  
 Quant Method : Z:\pestpcbsrv\HPCHEM1\ECD\_O\methods\PO101119.M  
 Quant Title : GC EXTRACTABLES  
 QLast Update : Sat Oct 12 06:25:38 2019  
 Response via : Initial Calibration  
 Integrator: ChemStation 6890 Scale Mode: Small noise peaks clipped

Volume Inj. : 2 µl  
 Signal #1 Phase : ZB-MR1 Signal #2 Phase: ZB-MR2  
 Signal #1 Info : 30Mx0.32mmx 0.50µ Signal #2 Info : 30M x 0.32mm x 0.25µm

Compound	RT#1	RT#2	Resp#1	Resp#2	ng/ml	ng/ml
-----						
System Monitoring Compounds						
1) SA Tetrachlo...	4.324	3.484	1154220	817708	18.662	19.069
2) SA Decachlor...	9.956	8.339	1086252	574547	19.414	19.581
Target Compounds						
36) L8 AR-1262-1	7.691	6.565	206976	61576	50.422	51.668
37) L8 AR-1262-2	8.228	7.007	325578	221906	50.493	52.812
38) L8 AR-1262-3	8.526	7.285	231975	102612	52.753	58.341
39) L8 AR-1262-4	8.616	7.348	180996	168207	52.387	55.022
40) L8 AR-1262-5	9.245	7.838	126251	71611	55.896	54.832
-----						

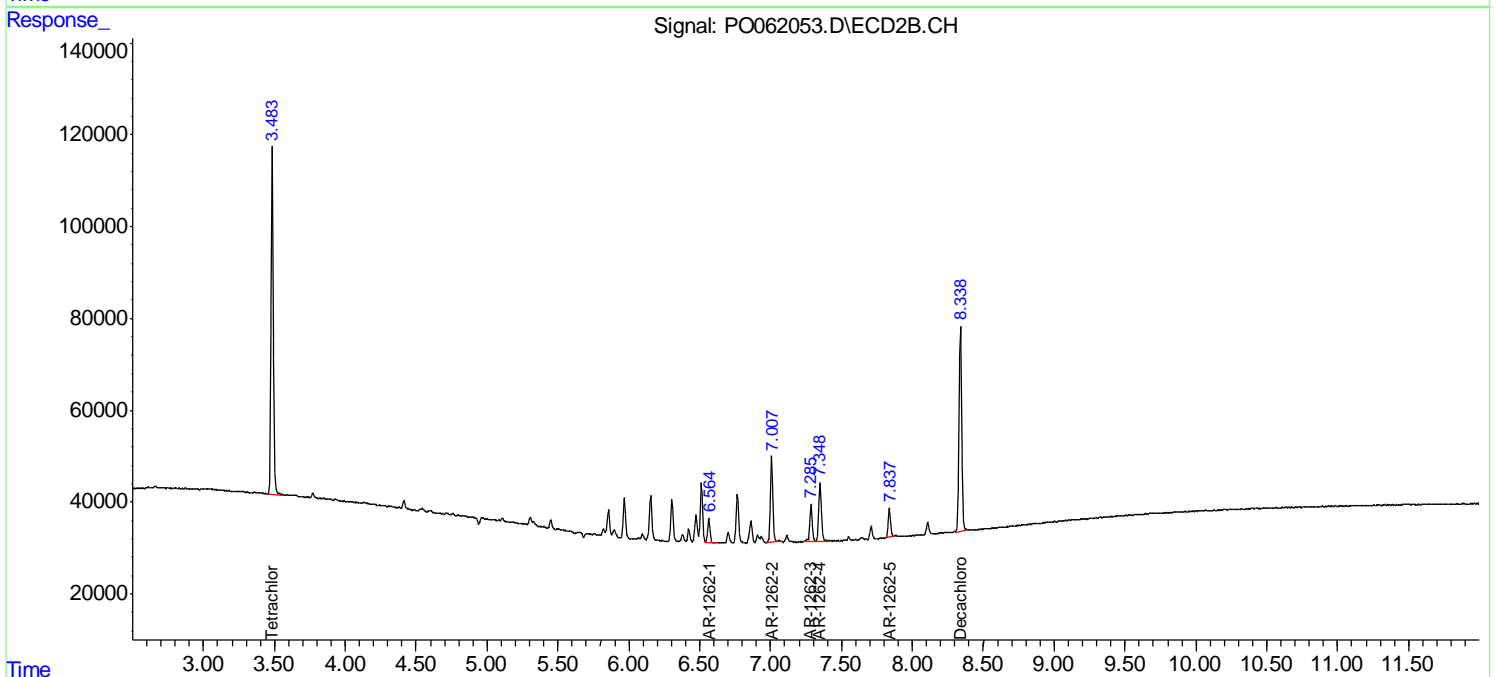
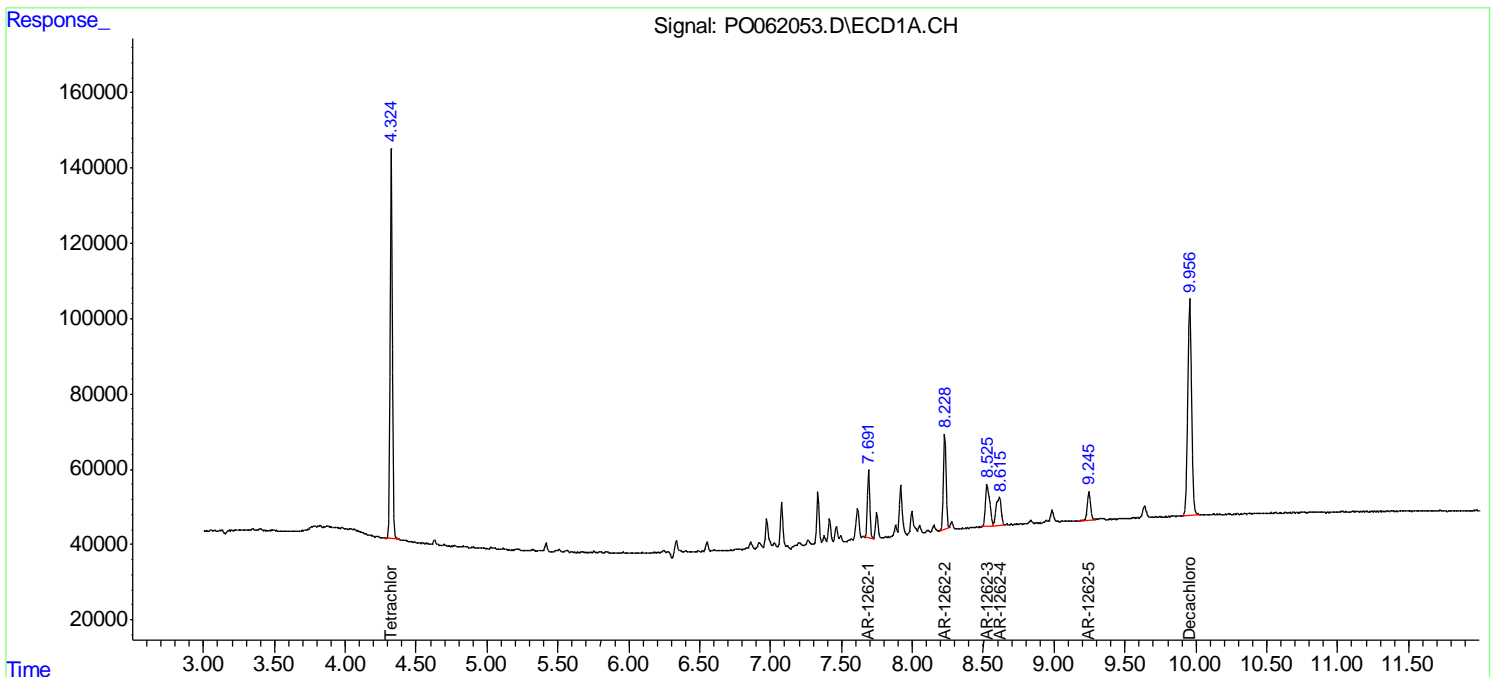
(f)=RT Delta > 1/2 Window (#)=Amounts differ by > 25% (m)=manual int.

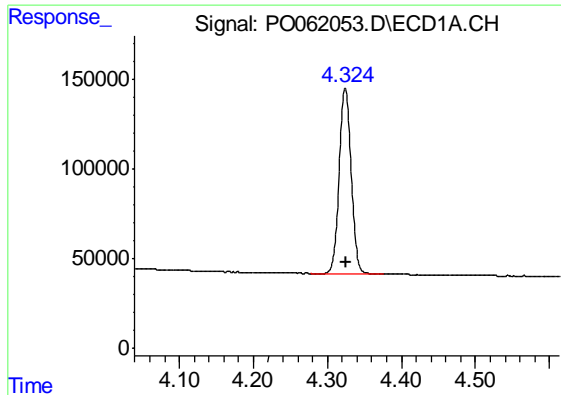
Data Path : Z:\pestpcbsrv\HPCHEM1\ECD\_O\Data\PO101619\  
 Data File : PO062053.D  
 Signal(s) : Signal #1: ECD1A.CH Signal #2: ECD2B.CH  
 Acq On : 16 Oct 2019 15:11  
 Operator : HP/AJ  
 Sample : K5111-08  
 Misc : AR1262-LOQ-50PPB-WATER  
 ALS Vial : 19 Sample Multiplier: 1

Instrument :  
 ECD\_O  
 ClientSampleID :  
 LOQ-WATER-02-QT4-2019

Integration File signal 1: autoint1.e  
 Integration File signal 2: autoint2.e  
 Quant Time: Oct 17 07:08:50 2019  
 Quant Method : Z:\pestpcbsrv\HPCHEM1\ECD\_O\methods\PO101119.M  
 Quant Title : GC EXTRACTABLES  
 QLast Update : Sat Oct 12 06:25:38 2019  
 Response via : Initial Calibration  
 Integrator: ChemStation 6890 Scale Mode: Small noise peaks clipped

Volume Inj. : 2 µl  
 Signal #1 Phase : ZB-MR1 Signal #2 Phase: ZB-MR2  
 Signal #1 Info : 30Mx0.32mmx 0.50µ Signal #2 Info : 30M x 0.32mm x 0.25µm

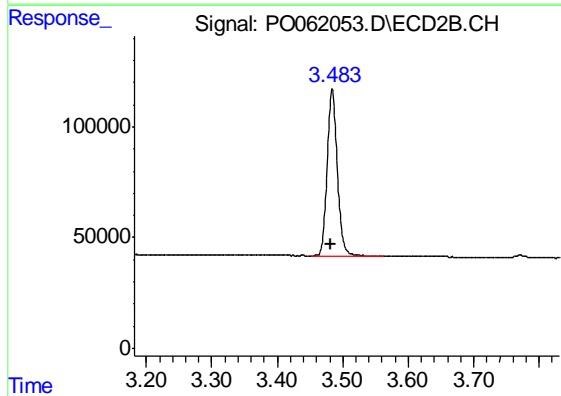




#1 Tetrachloro-m-xylene

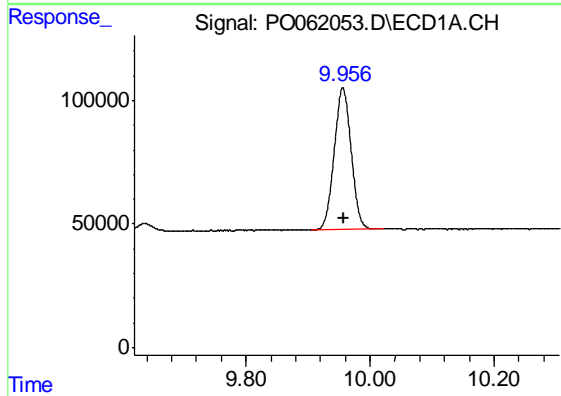
R.T.: 4.324 min  
 Delta R.T.: 0.000 min  
 Response: 1154220  
 Conc: 18.66 ng/ml

Instrument :  
 ECD\_O  
 ClientSampleId :  
 LOQ-WATER-02-QT4-2019



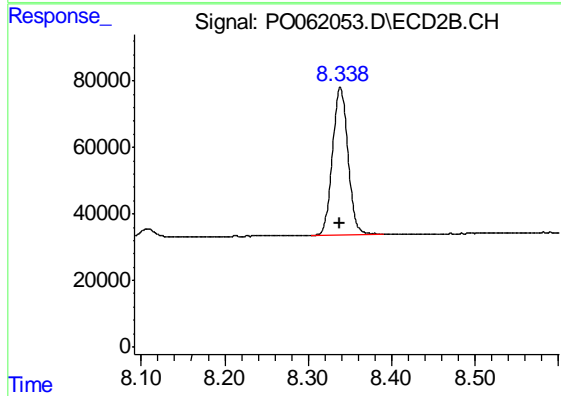
#1 Tetrachloro-m-xylene

R.T.: 3.484 min  
 Delta R.T.: 0.003 min  
 Response: 817708  
 Conc: 19.07 ng/ml



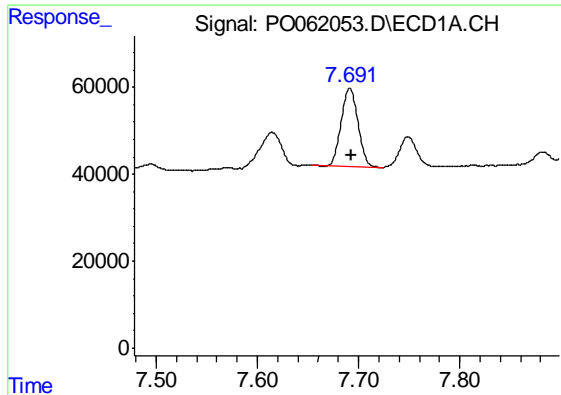
#2 Decachlorobiphenyl

R.T.: 9.956 min  
 Delta R.T.: 0.000 min  
 Response: 1086252  
 Conc: 19.41 ng/ml



#2 Decachlorobiphenyl

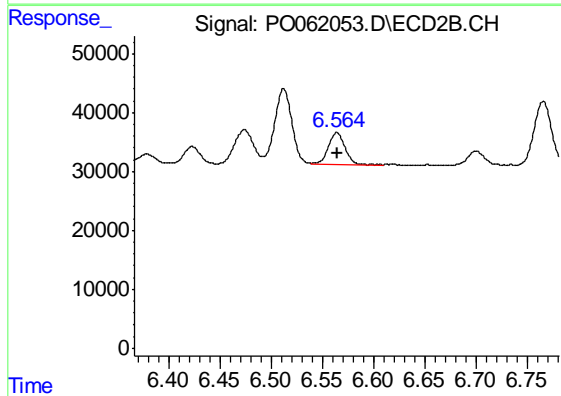
R.T.: 8.339 min  
 Delta R.T.: 0.000 min  
 Response: 574547  
 Conc: 19.58 ng/ml



#36 AR-1262-1

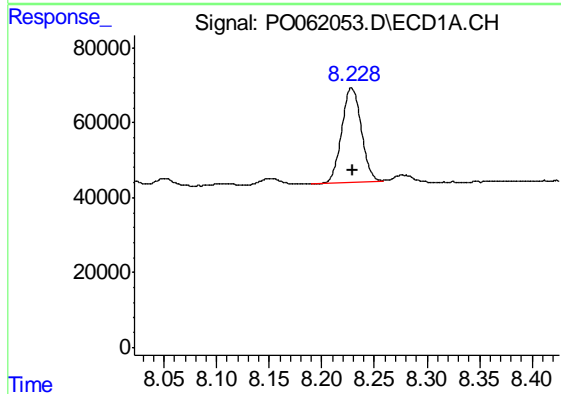
R.T.: 7.691 min  
 Delta R.T.: -0.002 min  
 Response: 206976  
 Conc: 50.42 ng/ml

Instrument :  
 ECD\_O  
 ClientSampleId :  
 LOQ-WATER-02-QT4-2019



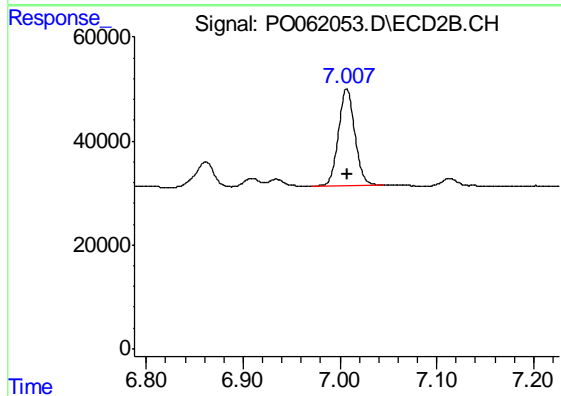
#36 AR-1262-1

R.T.: 6.565 min  
 Delta R.T.: 0.000 min  
 Response: 61576  
 Conc: 51.67 ng/ml



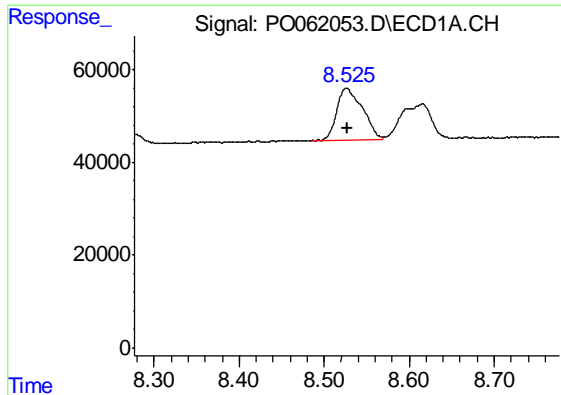
#37 AR-1262-2

R.T.: 8.228 min  
 Delta R.T.: 0.000 min  
 Response: 325578  
 Conc: 50.49 ng/ml



#37 AR-1262-2

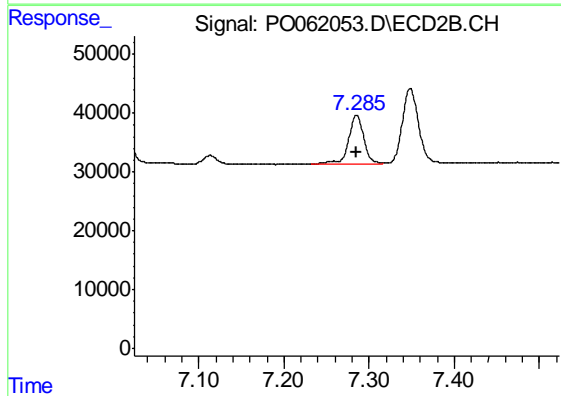
R.T.: 7.007 min  
 Delta R.T.: 0.000 min  
 Response: 221906  
 Conc: 52.81 ng/ml



#38 AR-1262-3

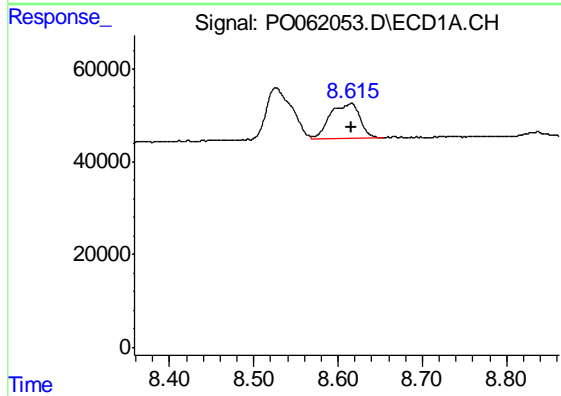
R.T.: 8.526 min  
 Delta R.T.: -0.002 min  
 Response: 231975  
 Conc: 52.75 ng/ml

Instrument :  
 ECD\_O  
 ClientSampleId :  
 LOQ-WATER-02-QT4-2019



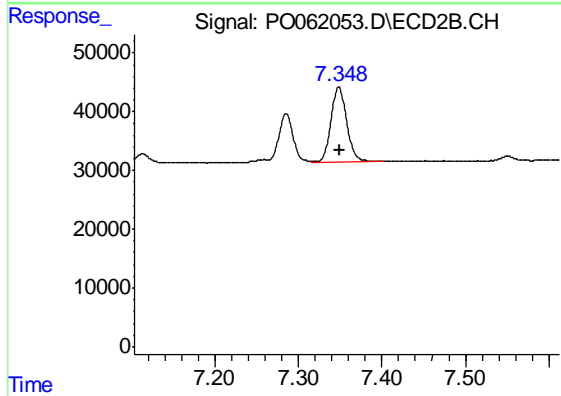
#38 AR-1262-3

R.T.: 7.285 min  
 Delta R.T.: 0.000 min  
 Response: 102612  
 Conc: 58.34 ng/ml



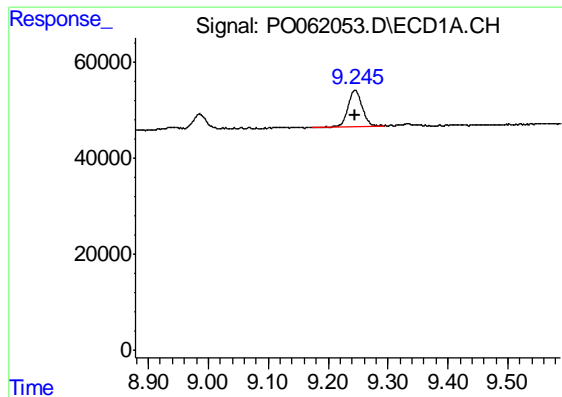
#39 AR-1262-4

R.T.: 8.616 min  
 Delta R.T.: 0.000 min  
 Response: 180996  
 Conc: 52.39 ng/ml



#39 AR-1262-4

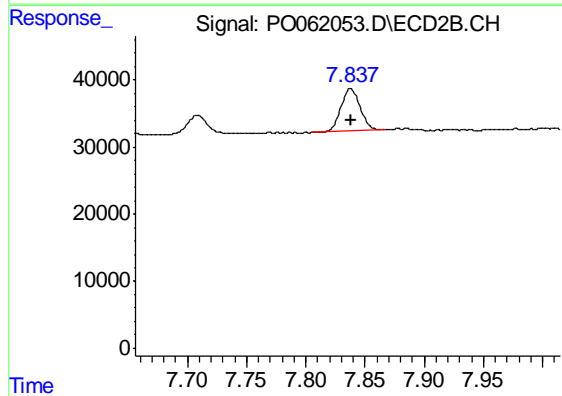
R.T.: 7.348 min  
 Delta R.T.: 0.000 min  
 Response: 168207  
 Conc: 55.02 ng/ml



#40 AR-1262-5

R.T.: 9.245 min  
Delta R.T.: 0.000 min  
Response: 126251  
Conc: 55.90 ng/ml

Instrument :  
ECD\_O  
ClientSampleId :  
LOQ-WATER-02-QT4-2019



#40 AR-1262-5

R.T.: 7.838 min  
Delta R.T.: -0.001 min  
Response: 71611  
Conc: 54.83 ng/ml