

Data Path : Z:\pestpcbsrv\HPCHEM1\ECD_O\Data\PO101619\
 Data File : P0062076.D
 Signal(s) : Signal #1: ECD1A.CH Signal #2: ECD2B.CH
 Acq On : 16 Oct 2019 22:04
 Operator : HP/AJ
 Sample : I.BLK
 Misc :
 ALS Vial : 2 Sample Multiplier: 1

Instrument :
 ECD_O
 ClientSampleId :
 I.BLK

Integration File signal 1: autoint1.e
 Integration File signal 2: autoint2.e
 Quant Time: Oct 17 01:09:30 2019
 Quant Method : Z:\pestpcbsrv\HPCHEM1\ECD_O\methods\PO101119.M
 Quant Title : GC EXTRACTABLES
 QLast Update : Sat Oct 12 06:25:38 2019
 Response via : Initial Calibration
 Integrator: ChemStation 6890 Scale Mode: Small noise peaks clipped

Volume Inj. : 2 µl
 Signal #1 Phase : ZB-MR1 Signal #2 Phase: ZB-MR2
 Signal #1 Info : 30Mx0.32mmx 0.50µ Signal #2 Info : 30M x 0.32mm x 0.25µm

Compound	RT#1	RT#2	Resp#1	Resp#2	ng/ml	ng/ml
----------	------	------	--------	--------	-------	-------

 System Monitoring Compounds

1) SA Tetrachlo...	4.324	3.484	1708103	1216393	27.618	28.366
2) SA Decachlor...	9.962	8.341	1309652	684425	23.406	23.326

Target Compounds

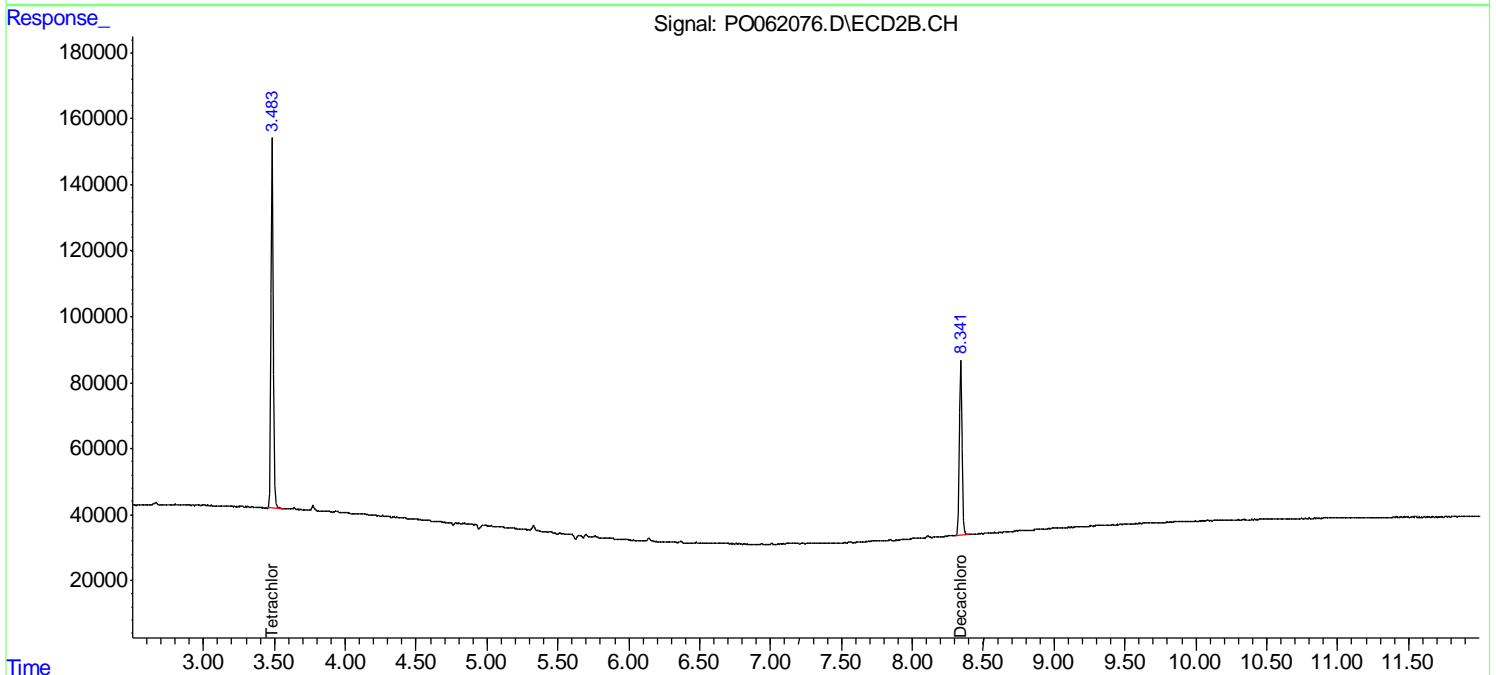
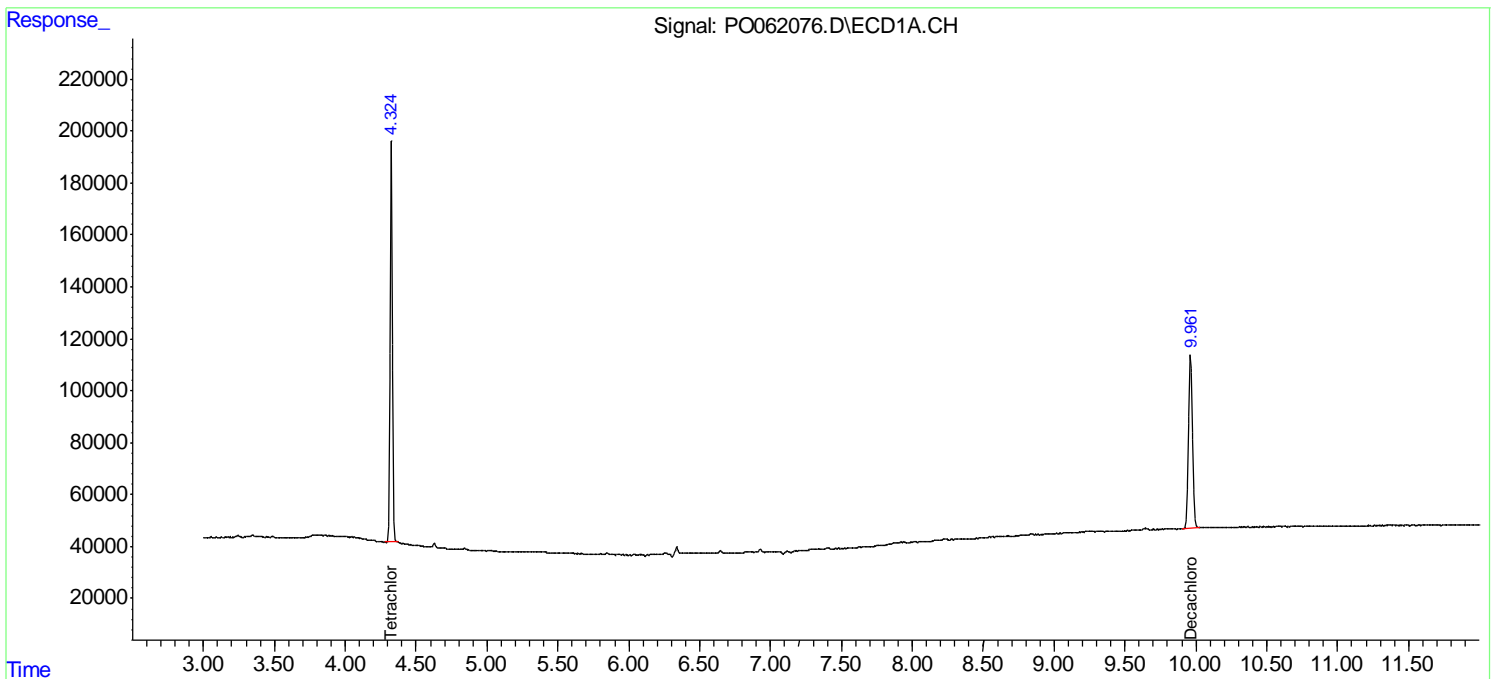
(f)=RT Delta > 1/2 Window (#)=Amounts differ by > 25% (m)=manual int.

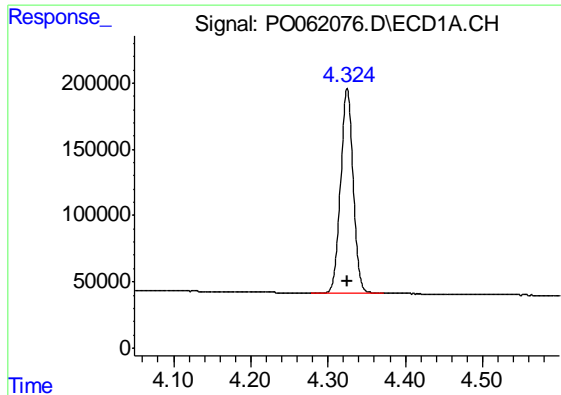
Data Path : Z:\pestpcbsrv\HPCHEM1\ECD_O\Data\PO101619\
 Data File : PO062076.D
 Signal(s) : Signal #1: ECD1A.CH Signal #2: ECD2B.CH
 Acq On : 16 Oct 2019 22:04
 Operator : HP/AJ
 Sample : I.BLK
 Misc :
 ALS Vial : 2 Sample Multiplier: 1

Instrument :
 ECD_O
 ClientSampleId :
 I.BLK

Integration File signal 1: autoint1.e
 Integration File signal 2: autoint2.e
 Quant Time: Oct 17 01:09:30 2019
 Quant Method : Z:\pestpcbsrv\HPCHEM1\ECD_O\methods\PO101119.M
 Quant Title : GC EXTRACTABLES
 QLast Update : Sat Oct 12 06:25:38 2019
 Response via : Initial Calibration
 Integrator: ChemStation 6890 Scale Mode: Small noise peaks clipped

Volume Inj. : 2 µl
 Signal #1 Phase : ZB-MR1 Signal #2 Phase: ZB-MR2
 Signal #1 Info : 30Mx0.32mmx 0.50µ Signal #2 Info : 30M x 0.32mm x 0.25µm

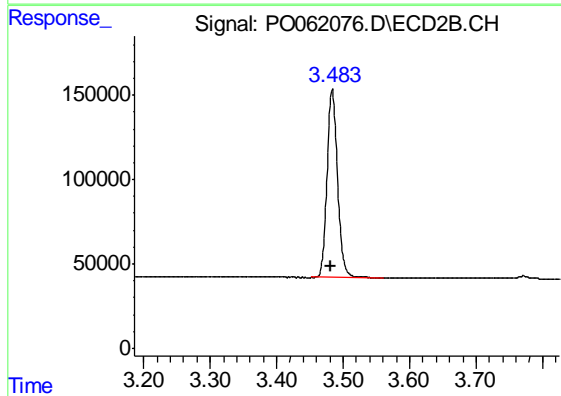




#1 Tetrachloro-m-xylene

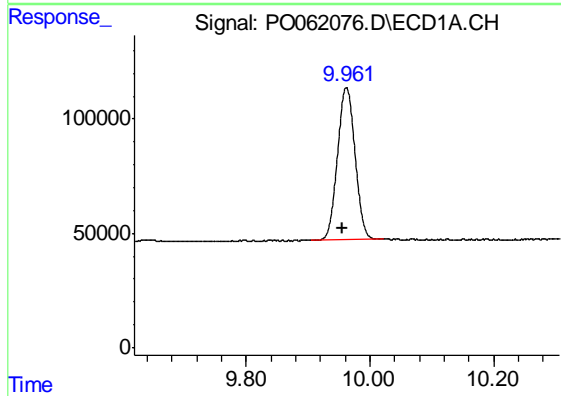
R.T.: 4.324 min
 Delta R.T.: 0.000 min
 Response: 1708103
 Conc: 27.62 ng/ml

Instrument :
 ECD_O
 ClientSampleId :
 I.BLK



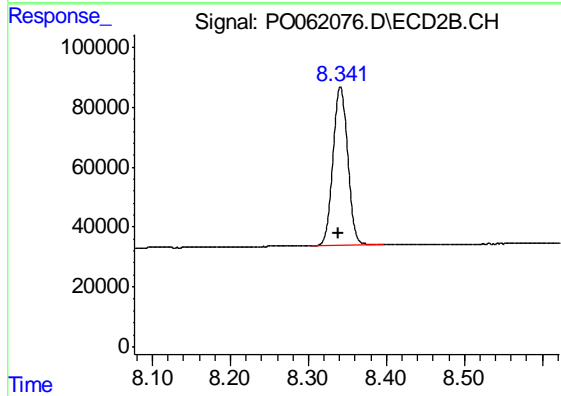
#1 Tetrachloro-m-xylene

R.T.: 3.484 min
 Delta R.T.: 0.002 min
 Response: 1216393
 Conc: 28.37 ng/ml



#2 Decachlorobiphenyl

R.T.: 9.962 min
 Delta R.T.: 0.005 min
 Response: 1309652
 Conc: 23.41 ng/ml



#2 Decachlorobiphenyl

R.T.: 8.341 min
 Delta R.T.: 0.003 min
 Response: 684425
 Conc: 23.33 ng/ml