

Data Path : Z:\pestpcbsrv\HPCHEM1\ECD_0\Data\PO101620\
 Data File : PO072454.D
 Signal(s) : Signal #1: ECD1A.CH Signal #2: ECD2B.CH
 Acq On : 16 Oct 2020 22:18
 Operator : DD\AJ
 Sample : AR1254CCC500
 Misc :
 ALS Vial : 5 Sample Multiplier: 1

Instrument :
 ECD_0
 ClientSampled :
 AR1254CCC500

Integration File signal 1: autoint1.e
 Integration File signal 2: autoint2.e
 Quant Time: Oct 17 06:26:51 2020
 Quant Method : Z:\pestpcbsrv\HPCHEM1\ECD_0\methods\PO101420.M
 Quant Title : GC EXTRACTABLES
 QLast Update : Wed Oct 14 17:47:24 2020
 Response via : Initial Calibration
 Integrator: ChemStation 6890 Scale Mode: Small noise peaks clipped

Volume Inj. : 2 µl
 Signal #1 Phase : ZB-MR1 Signal #2 Phase: ZB-MR2
 Signal #1 Info : 30Mx0.32mmx 0.50µ Signal #2 Info : 30M x 0.32mm x 0.25µm

Compound	RT#1	RT#2	Resp#1	Resp#2	ng/ml	ng/ml

System Monitoring Compounds						
1) SA Tetrachlo...	4.322	3.504	4543738	2163184	53.570	51.355
2) SA Decachlor...	9.924	8.672	5122531	2382271	46.440	46.083
Target Compounds						
3) L1 AR-1016-1	5.624	4.723	46893	26888	14.227	15.635
4) L1 AR-1016-2	5.648	4.740	62361	19345	13.344	7.875 #
6) L1 AR-1016-4	0.000	4.984	0	568573	N.D.	539.992 #
7) L1 AR-1016-5	6.123	5.203	629596	356447	310.055	270.685
9) L2 AR-1221-2	4.666	3.843	66079	31258	104.377	81.649
12) L3 AR-1232-2	5.331	4.740	1287	19345	1.352	18.648 #
13) L3 AR-1232-3	5.648	0.000	62361	0	31.826	N.D. #
14) L3 AR-1232-4	0.000	5.024	0	173226	N.D.	393.438 #
15) L3 AR-1232-5	5.912	5.203	1107099	356447	1846.299	697.699 #
16) L4 AR-1242-1	5.624	4.723	46893	26888	19.255	20.802
17) L4 AR-1242-2	5.648	4.740	62361	19345	17.716	10.564 #
19) L4 AR-1242-4	0.000	5.024	0	173226	N.D.	195.563 #
20) L4 AR-1242-5	6.585	5.576	690220	1424987	296.080	1037.922 #
21) L5 AR-1248-1	5.624	4.723	46893	26888	25.084	26.435
22) L5 AR-1248-2	5.912	4.984	1107099	568573	442.491	398.755
23) L5 AR-1248-3	6.123	5.024	629596	173226	217.312	128.985 #
24) L5 AR-1248-4	6.548	5.203	1229200	356447	277.962	212.259
25) L5 AR-1248-5	6.585	5.618	690220	208029	175.576	112.629 #
26) L6 AR-1254-1	6.515	5.576	2115513	1424987	500.781	515.517
27) L6 AR-1254-2	6.742	5.737	3499453	1258833	539.963	517.768
28) L6 AR-1254-3	7.118	6.145	3695122	1984212	543.658	515.637
29) L6 AR-1254-4	7.413	6.386	3449849	1362939	520.476	507.564
30) L6 AR-1254-5	7.834	6.807	3240074	1849204	505.811	504.597
31) L7 AR-1260-1	7.280	6.282	1619312	1013875	332.288	396.321
32) L7 AR-1260-2	7.546	6.482	2036292	864015	265.393	267.950
33) L7 AR-1260-3	7.892	6.623	420851	836641	65.668	278.763 #
34) L7 AR-1260-4	8.126	7.103	1191852	95813	195.833	36.341 #
35) L7 AR-1260-5	8.445	7.355	477730	239922	32.885	36.723
36) L8 AR-1262-1	7.892	6.807	420851	1849204	44.376	969.132 #
37) L8 AR-1262-2	8.445	7.355	477730	239922	29.890	35.921
38) L8 AR-1262-3	8.736f	0.000	363037	0	51.953	N.D. #
39) L8 AR-1262-4	8.780	7.692	183731	229295	45.975	44.491
41) L9 AR-1268-1	8.736f	0.000	363037	0	18.857	N.D. #
42) L9 AR-1268-2	8.780	7.692	183731	229295	11.129	31.515 #
45) L9 AR-1268-5	0.000	8.459	0	19187	N.D.	0.998 #

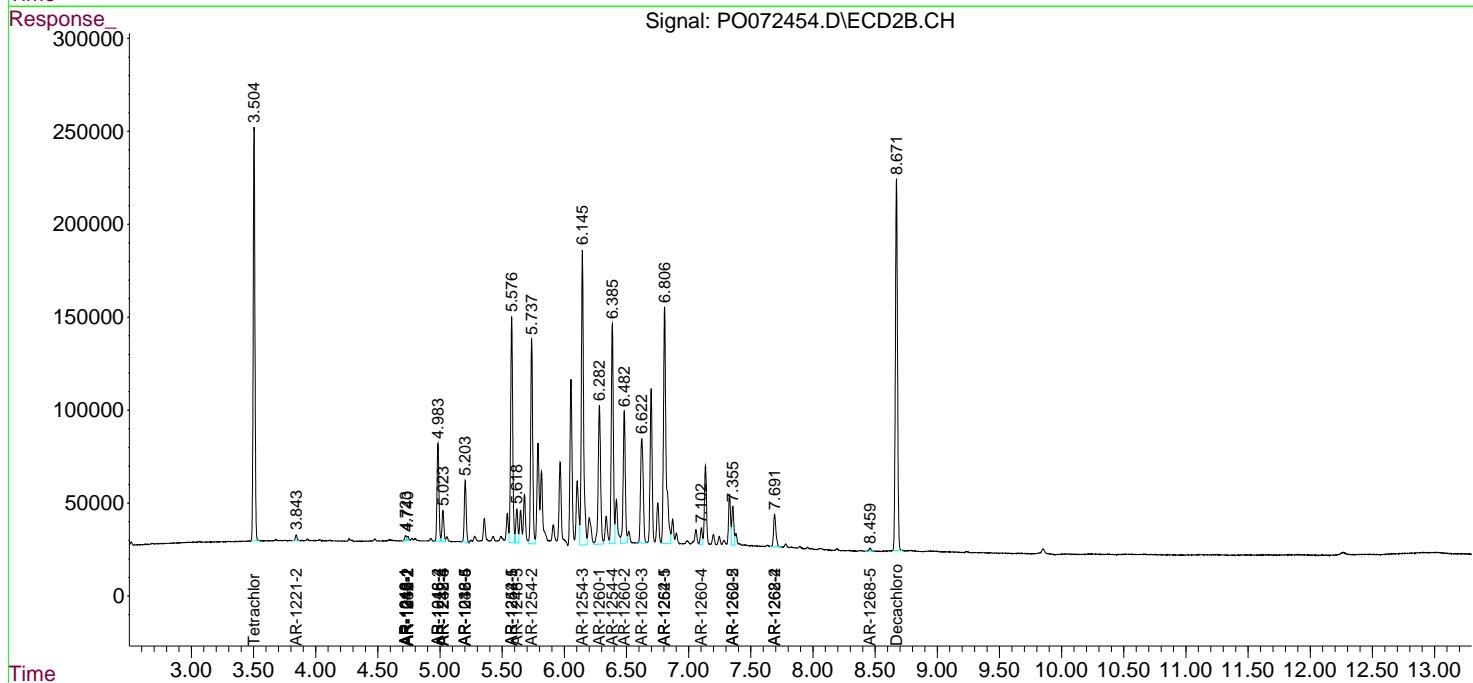
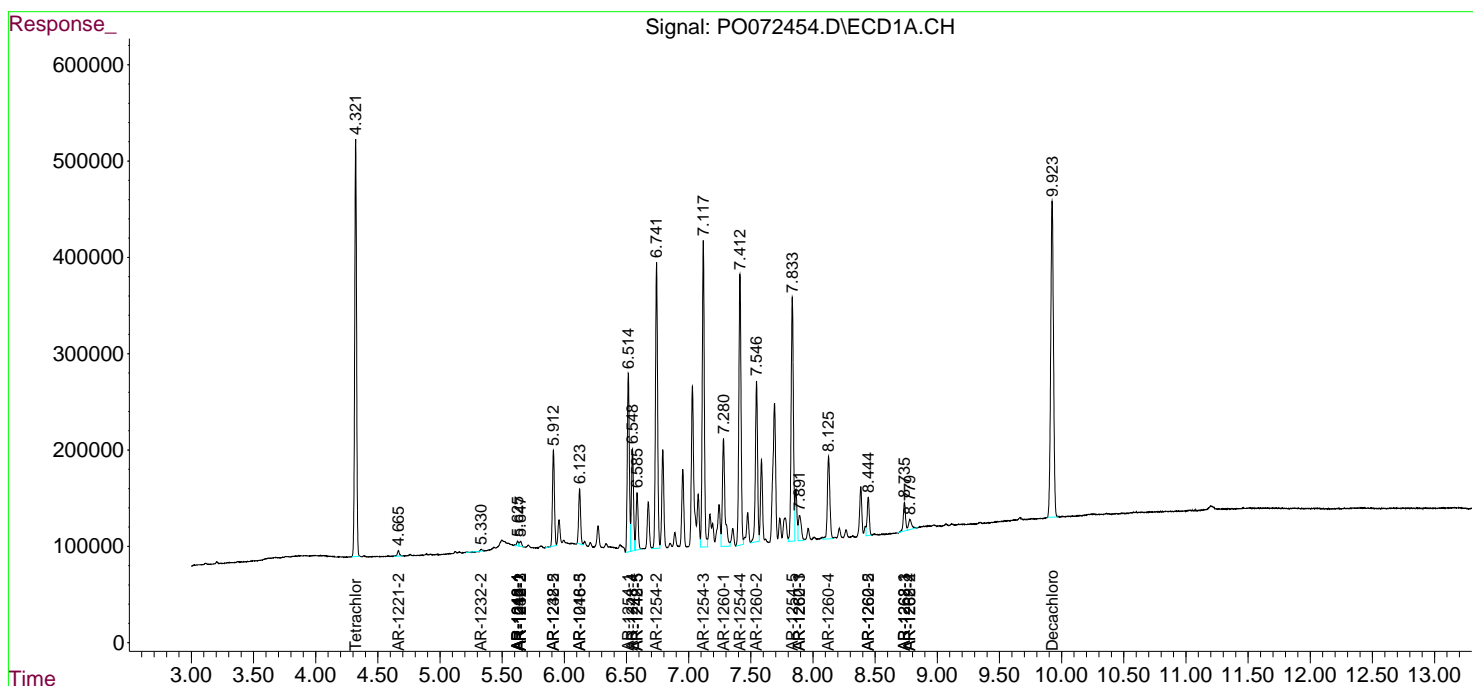
(f)=RT Delta > 1/2 Window (#)=Amounts differ by > 25% (m)=manual int.

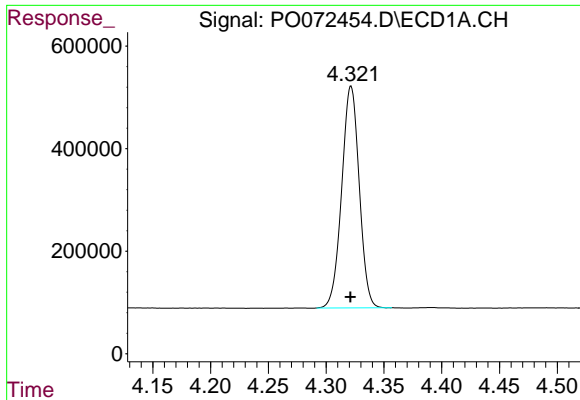
Data Path : Z:\pestpcbsrv\HPCHEM1\ECD_O\Data\PO101620\
 Data File : PO072454.D
 Signal(s) : Signal #1: ECD1A.CH Signal #2: ECD2B.CH
 Acq On : 16 Oct 2020 22:18
 Operator : DD\AJ
 Sample : AR1254CCC500
 Misc :
 ALS Vial : 5 Sample Multiplier: 1

Instrument :
 ECD_O
 ClientSampleID :
 AR1254CCC500

Integration File signal 1: autoint1.e
 Integration File signal 2: autoint2.e
 Quant Time: Oct 17 06:26:51 2020
 Quant Method : Z:\pestpcbsrv\HPCHEM1\ECD_O\methods\PO101420.M
 Quant Title : GC EXTRACTABLES
 QLast Update : Wed Oct 14 17:47:24 2020
 Response via : Initial Calibration
 Integrator: ChemStation 6890 Scale Mode: Small noise peaks clipped

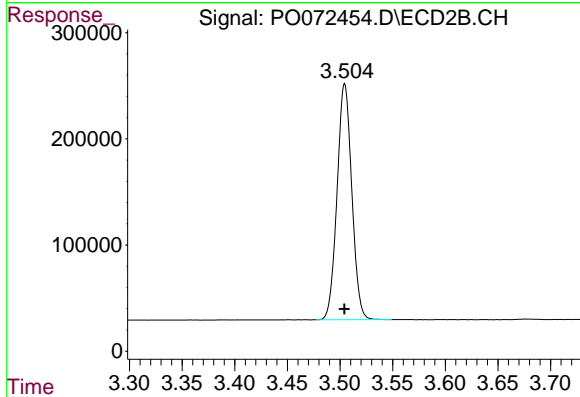
Volume Inj. : 2 µl
 Signal #1 Phase : ZB-MR1 Signal #2 Phase: ZB-MR2
 Signal #1 Info : 30Mx0.32mmx 0.50µ Signal #2 Info : 30M x 0.32mm x 0.25µm



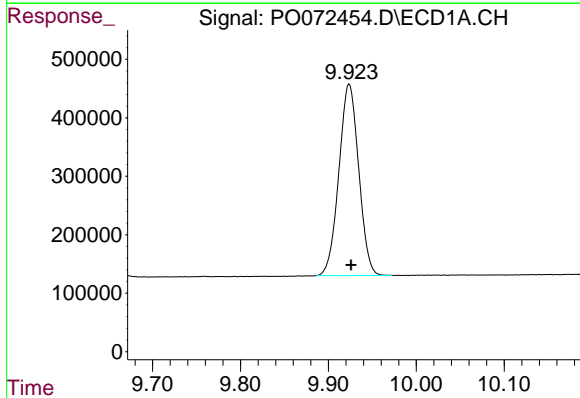


#1 Tetrachloro-m-xylene
 R.T.: 4.322 min
 Delta R.T.: 0.000 min
 Response: 4543738
 Conc: 53.57 ng/ml

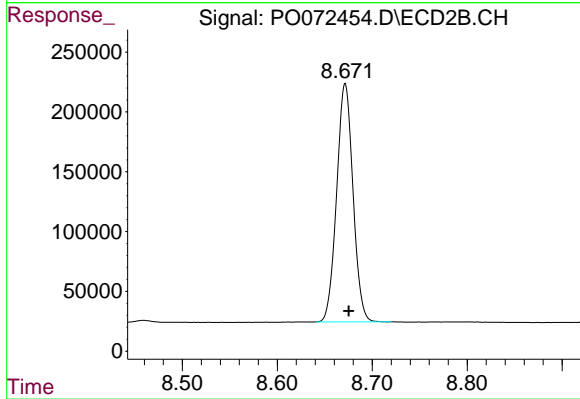
Instrument :
 ECD_O
ClientSampleId :
 AR1254CCC500



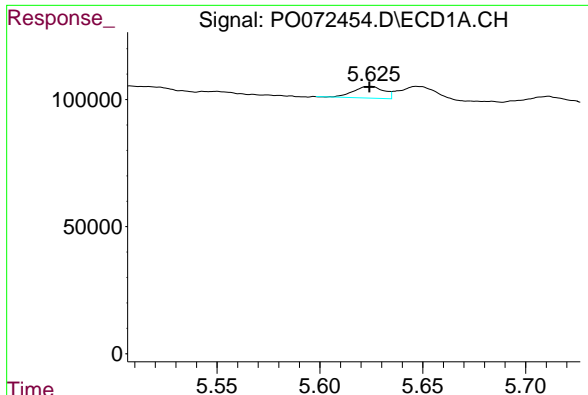
#1 Tetrachloro-m-xylene
 R.T.: 3.504 min
 Delta R.T.: 0.000 min
 Response: 2163184
 Conc: 51.36 ng/ml



#2 Decachlorobiphenyl
 R.T.: 9.924 min
 Delta R.T.: -0.002 min
 Response: 5122531
 Conc: 46.44 ng/ml

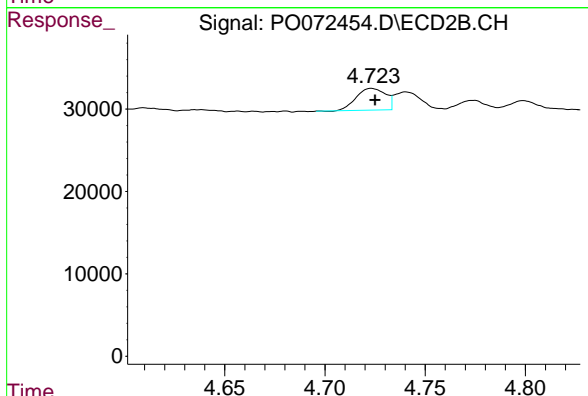


#2 Decachlorobiphenyl
 R.T.: 8.672 min
 Delta R.T.: -0.004 min
 Response: 2382271
 Conc: 46.08 ng/ml

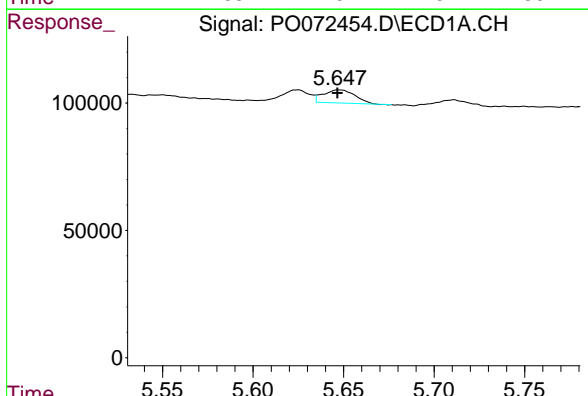


#3 AR-1016-1
 R.T.: 5.624 min
 Delta R.T.: 0.000 min
 Response: 46893
 Conc: 14.23 ng/ml

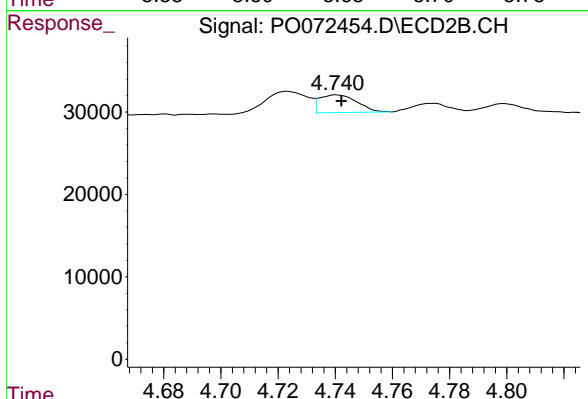
Instrument :
 ECD_O
 ClientSampleId :
 AR1254CCC500



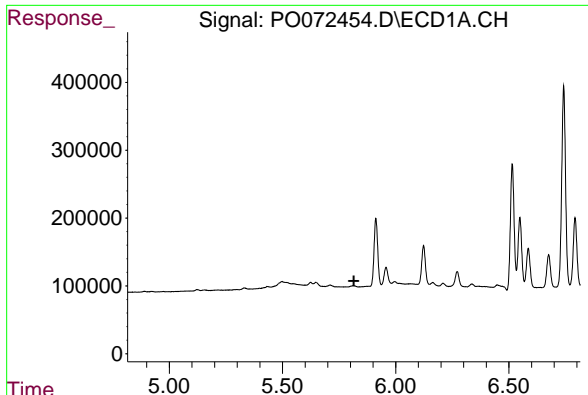
#3 AR-1016-1
 R.T.: 4.723 min
 Delta R.T.: -0.002 min
 Response: 26888
 Conc: 15.63 ng/ml



#4 AR-1016-2
 R.T.: 5.648 min
 Delta R.T.: 0.000 min
 Response: 62361
 Conc: 13.34 ng/ml



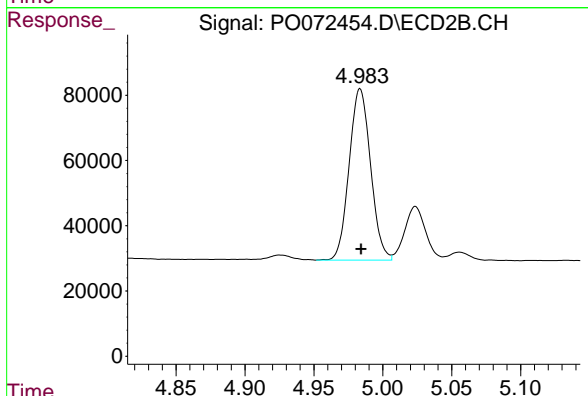
#4 AR-1016-2
 R.T.: 4.740 min
 Delta R.T.: -0.002 min
 Response: 19345
 Conc: 7.88 ng/ml



#6 AR-1016-4

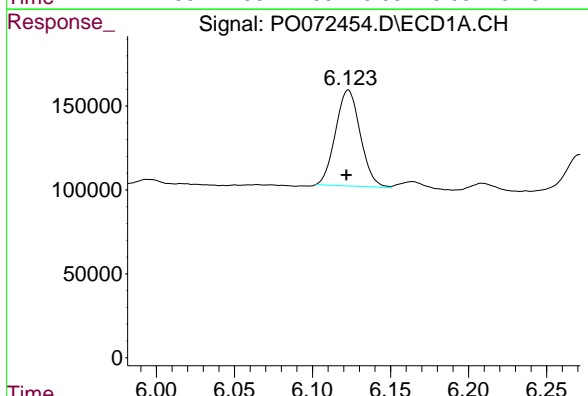
R.T.: 0.000 min
 Exp R.T.: 5.815 min
 Response: 0
 Conc: N.D.

Instrument :
 ECD_O
 ClientSampleId :
 AR1254CCC500



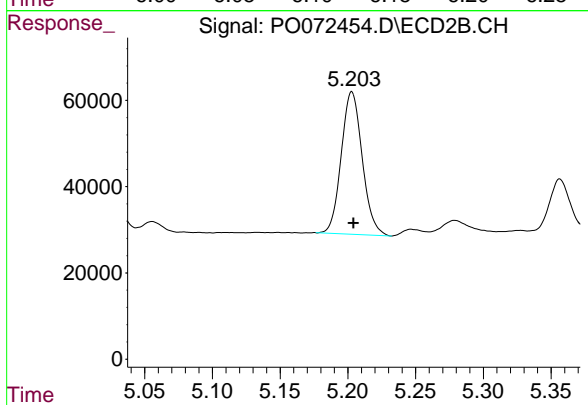
#6 AR-1016-4

R.T.: 4.984 min
 Delta R.T.: 0.000 min
 Response: 568573
 Conc: 539.99 ng/ml



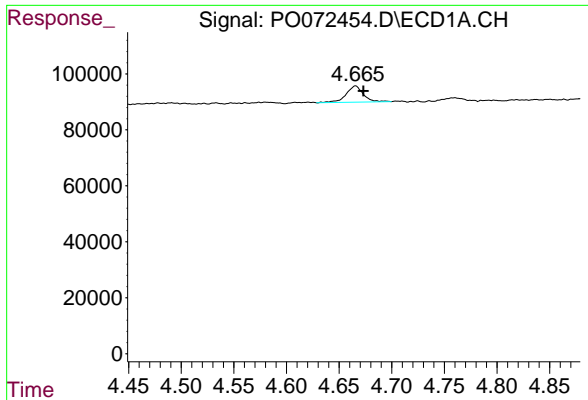
#7 AR-1016-5

R.T.: 6.123 min
 Delta R.T.: 0.001 min
 Response: 629596
 Conc: 310.06 ng/ml



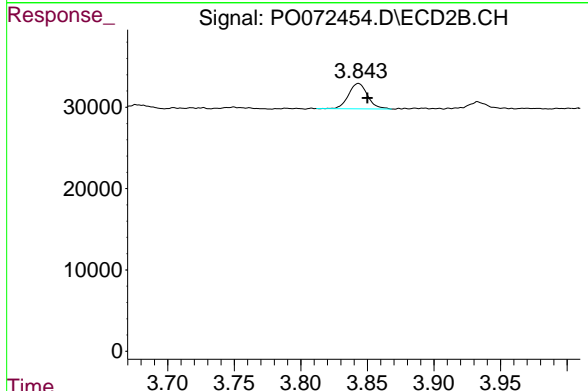
#7 AR-1016-5

R.T.: 5.203 min
 Delta R.T.: -0.001 min
 Response: 356447
 Conc: 270.68 ng/ml

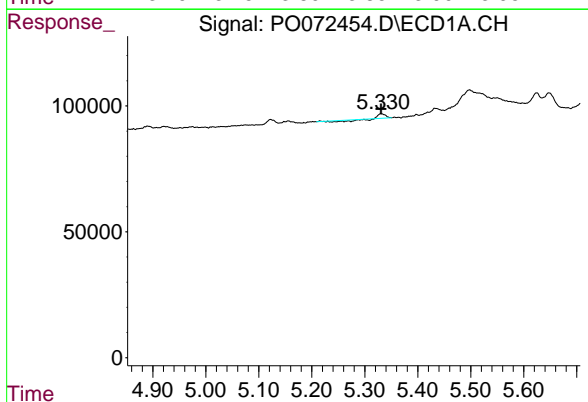


#9 AR-1221-2
 R.T.: 4.666 min
 Delta R.T.: -0.007 min
 Response: 66079
 Conc: 104.38 ng/ml

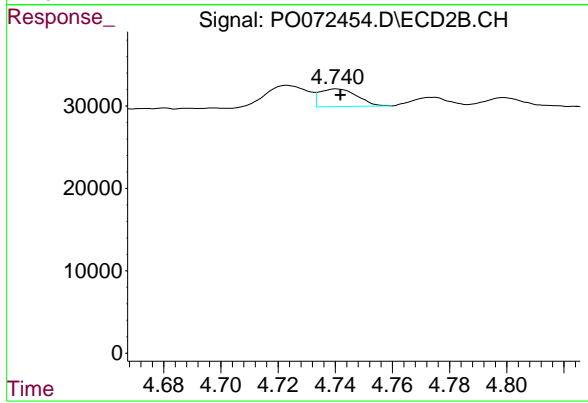
Instrument :
 ECD_O
ClientSampleId :
 AR1254CCC500



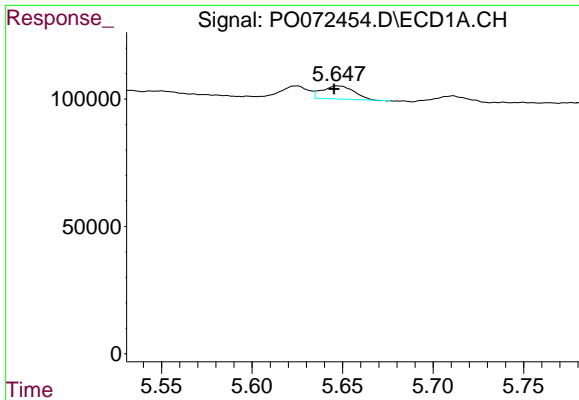
#9 AR-1221-2
 R.T.: 3.843 min
 Delta R.T.: -0.007 min
 Response: 31258
 Conc: 81.65 ng/ml



#12 AR-1232-2
 R.T.: 5.331 min
 Delta R.T.: 0.000 min
 Response: 1287
 Conc: 1.35 ng/ml

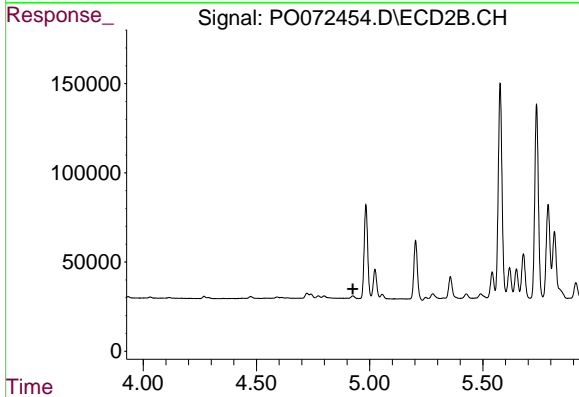


#12 AR-1232-2
 R.T.: 4.740 min
 Delta R.T.: -0.001 min
 Response: 19345
 Conc: 18.65 ng/ml

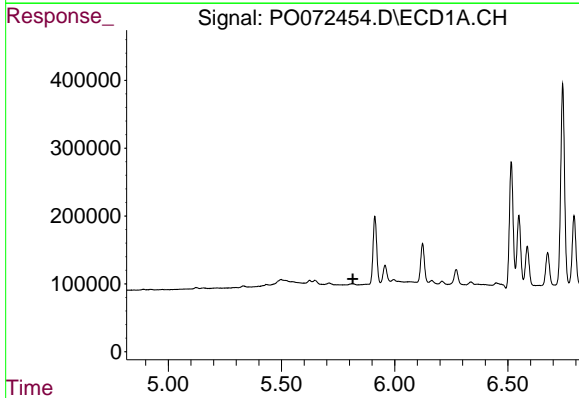


#13 AR-1232-3
 R.T.: 5.648 min
 Delta R.T.: 0.002 min
 Response: 62361
 Conc: 31.83 ng/ml

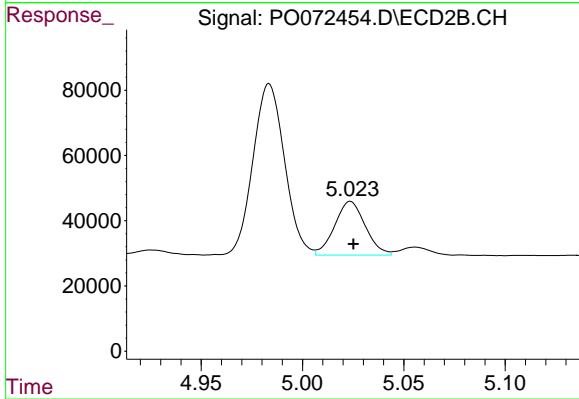
Instrument :
 ECD_O
 ClientSampleId :
 AR1254CCC500



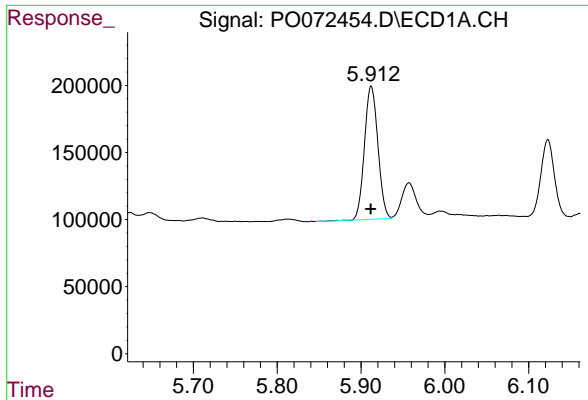
#13 AR-1232-3
 R.T.: 0.000 min
 Exp R.T. : 4.926 min
 Response: 0
 Conc: N.D.



#14 AR-1232-4
 R.T.: 0.000 min
 Exp R.T. : 5.815 min
 Response: 0
 Conc: N.D.

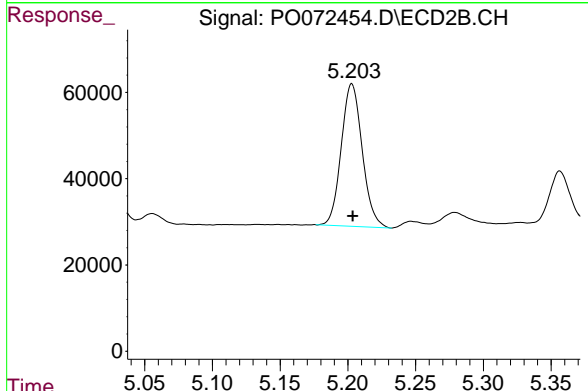


#14 AR-1232-4
 R.T.: 5.024 min
 Delta R.T.: -0.001 min
 Response: 173226
 Conc: 393.44 ng/ml

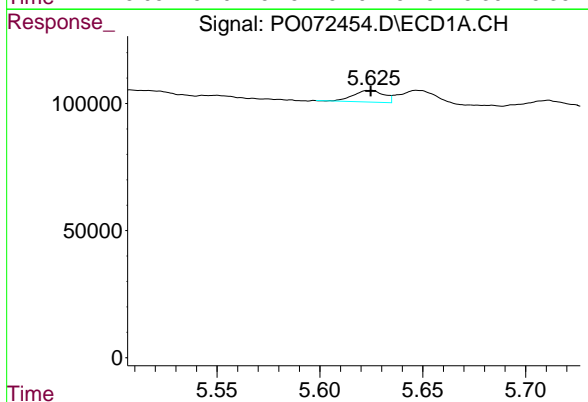


#15 AR-1232-5
 R.T.: 5.912 min
 Delta R.T.: 0.000 min
 Response: 1107099
 Conc: 1846.30 ng/ml

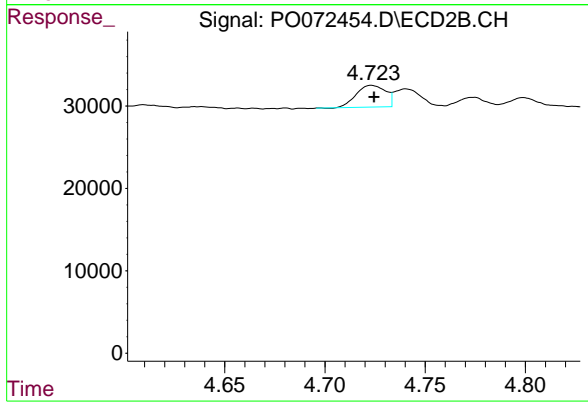
Instrument :
 ECD_O
ClientSampleId :
 AR1254CCC500



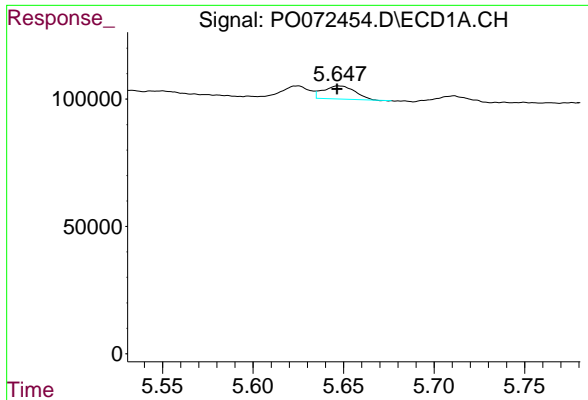
#15 AR-1232-5
 R.T.: 5.203 min
 Delta R.T.: 0.000 min
 Response: 356447
 Conc: 697.70 ng/ml



#16 AR-1242-1
 R.T.: 5.624 min
 Delta R.T.: 0.000 min
 Response: 46893
 Conc: 19.25 ng/ml

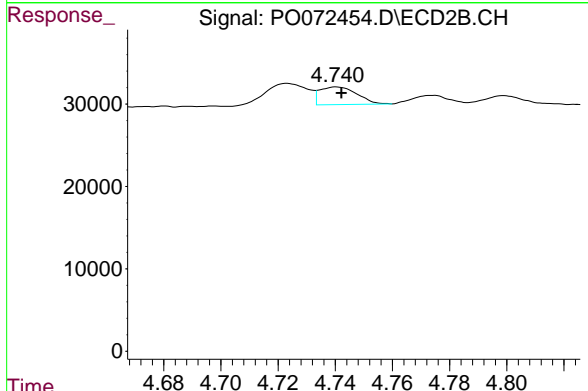


#16 AR-1242-1
 R.T.: 4.723 min
 Delta R.T.: -0.001 min
 Response: 26888
 Conc: 20.80 ng/ml

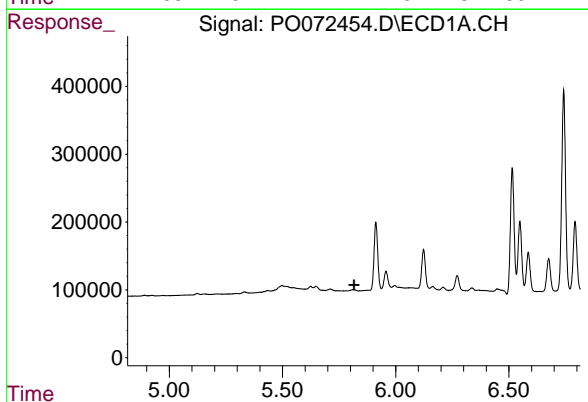


#17 AR-1242-2
 R.T.: 5.648 min
 Delta R.T.: 0.001 min
 Response: 62361
 Conc: 17.72 ng/ml

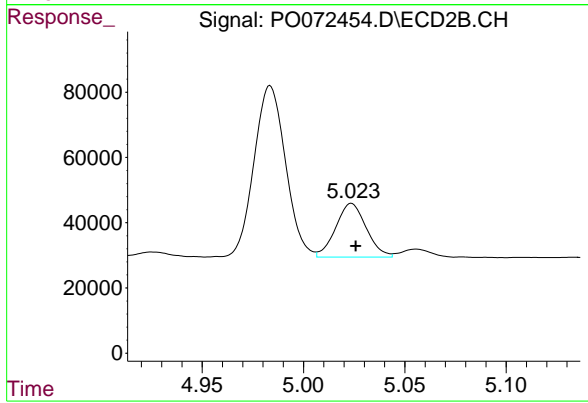
Instrument :
 ECD_O
 ClientSampleId :
 AR1254CCC500



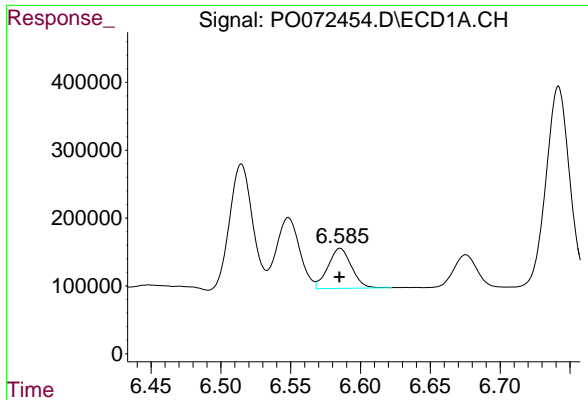
#17 AR-1242-2
 R.T.: 4.740 min
 Delta R.T.: -0.002 min
 Response: 19345
 Conc: 10.56 ng/ml



#19 AR-1242-4
 R.T.: 0.000 min
 Exp R.T. : 5.816 min
 Response: 0
 Conc: N.D.



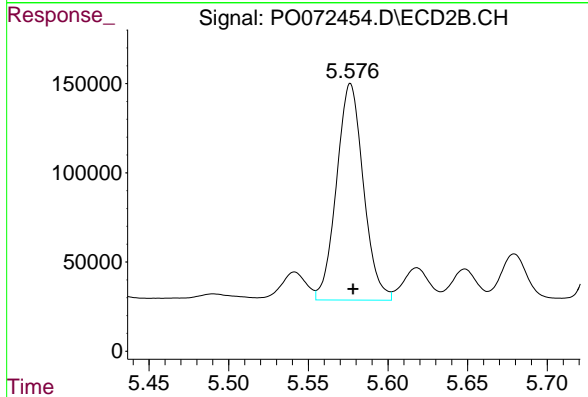
#19 AR-1242-4
 R.T.: 5.024 min
 Delta R.T.: -0.002 min
 Response: 173226
 Conc: 195.56 ng/ml



#20 AR-1242-5

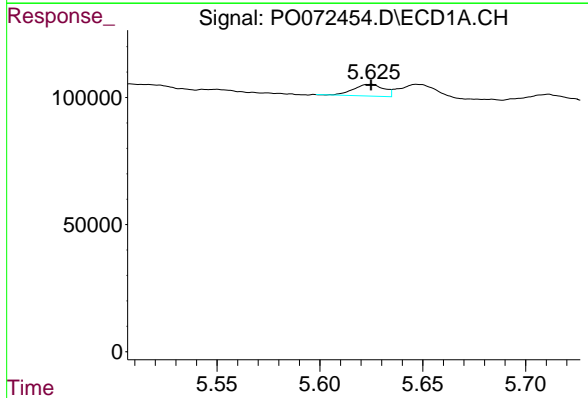
R.T.: 6.585 min
 Delta R.T.: 0.000 min
 Response: 690220
 Conc: 296.08 ng/ml

Instrument :
 ECD_O
ClientSampled :
 AR1254CCC500



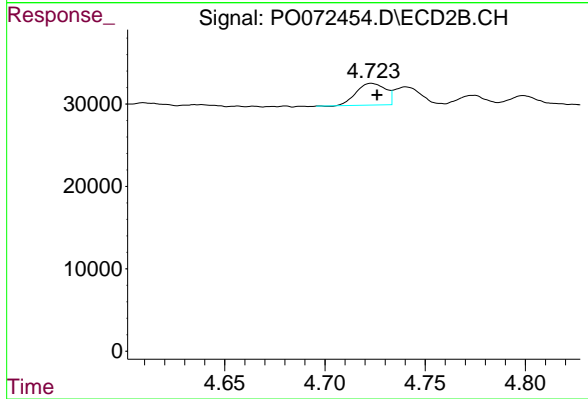
#20 AR-1242-5

R.T.: 5.576 min
 Delta R.T.: -0.002 min
 Response: 1424987
 Conc: 1037.92 ng/ml



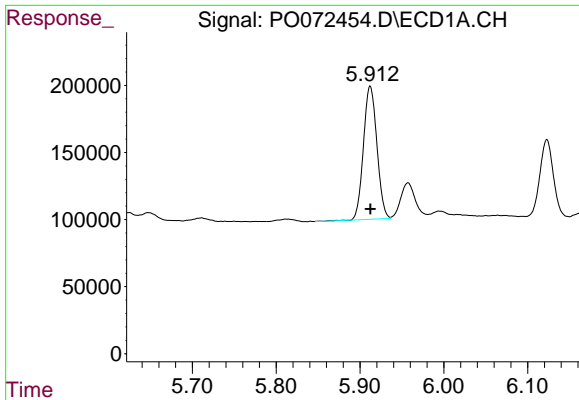
#21 AR-1248-1

R.T.: 5.624 min
 Delta R.T.: 0.000 min
 Response: 46893
 Conc: 25.08 ng/ml



#21 AR-1248-1

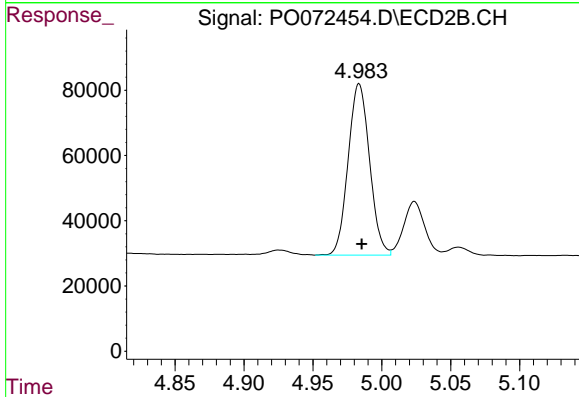
R.T.: 4.723 min
 Delta R.T.: -0.003 min
 Response: 26888
 Conc: 26.44 ng/ml



#22 AR-1248-2

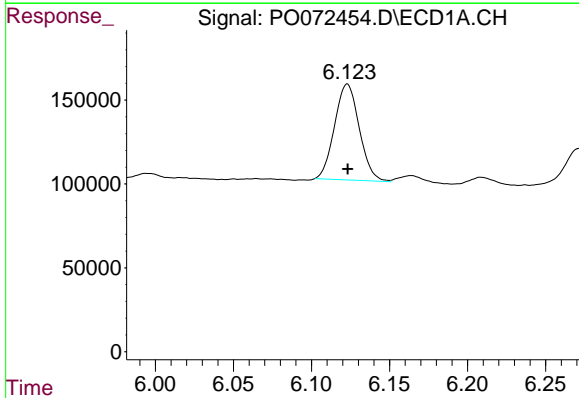
R.T.: 5.912 min
Delta R.T.: 0.000 min
Response: 1107099
Conc: 442.49 ng/ml

Instrument :
ECD_O
ClientSampleId :
AR1254CCC500



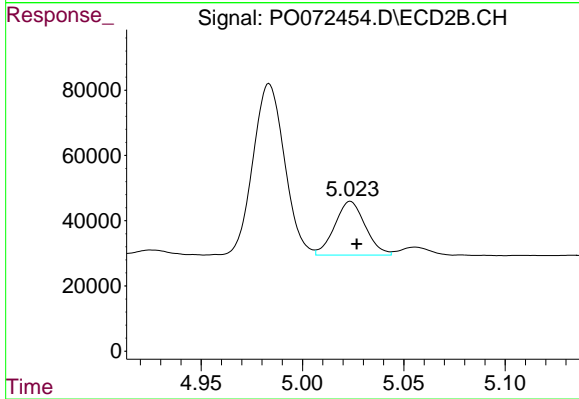
#22 AR-1248-2

R.T.: 4.984 min
Delta R.T.: -0.002 min
Response: 568573
Conc: 398.75 ng/ml



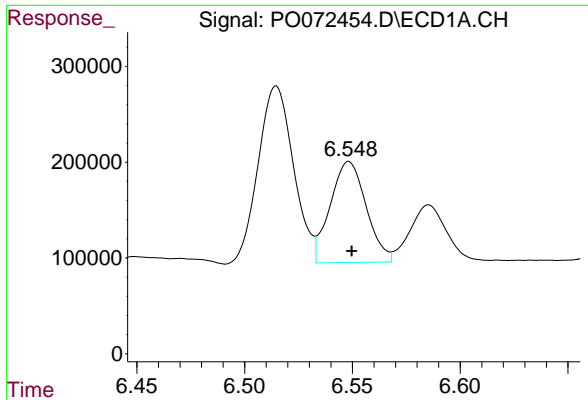
#23 AR-1248-3

R.T.: 6.123 min
Delta R.T.: 0.000 min
Response: 629596
Conc: 217.31 ng/ml



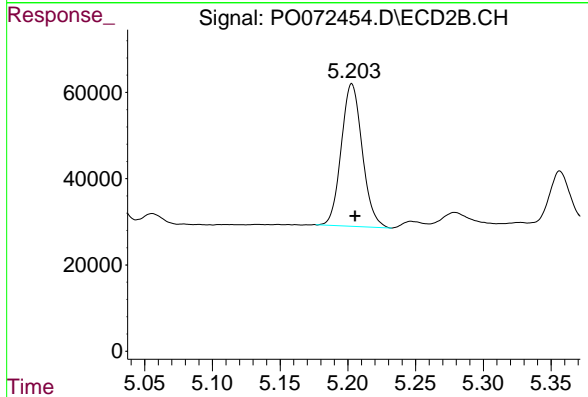
#23 AR-1248-3

R.T.: 5.024 min
Delta R.T.: -0.003 min
Response: 173226
Conc: 128.99 ng/ml

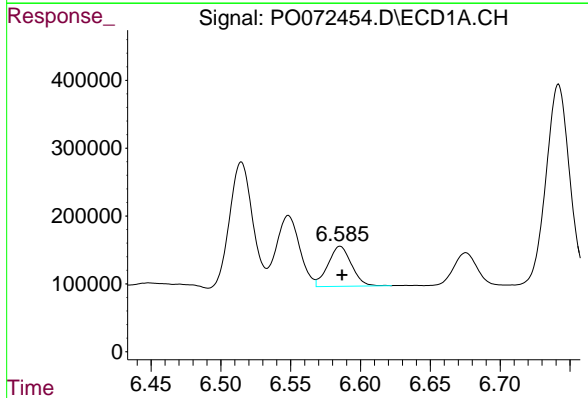


#24 AR-1248-4
 R.T.: 6.548 min
 Delta R.T.: -0.001 min
 Response: 1229200
 Conc: 277.96 ng/ml

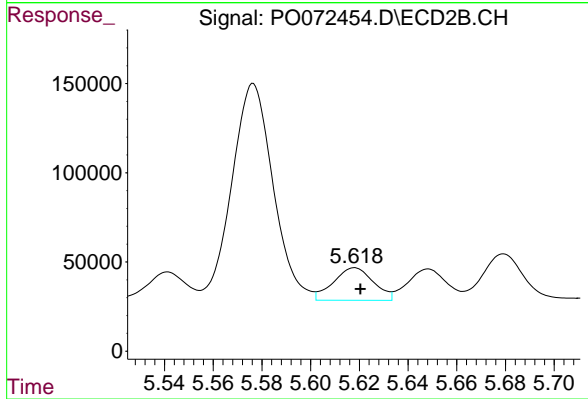
Instrument :
 ECD_O
 ClientSampleId :
 AR1254CCC500



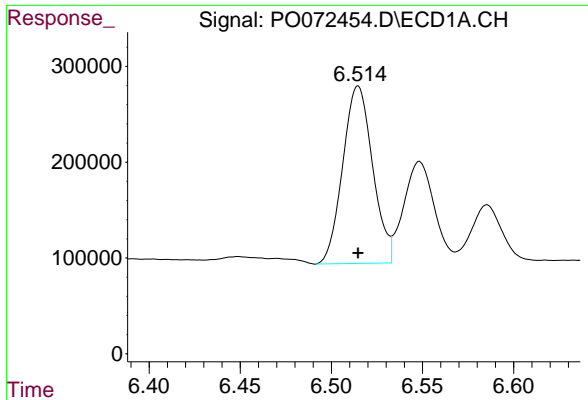
#24 AR-1248-4
 R.T.: 5.203 min
 Delta R.T.: -0.002 min
 Response: 356447
 Conc: 212.26 ng/ml



#25 AR-1248-5
 R.T.: 6.585 min
 Delta R.T.: -0.001 min
 Response: 690220
 Conc: 175.58 ng/ml



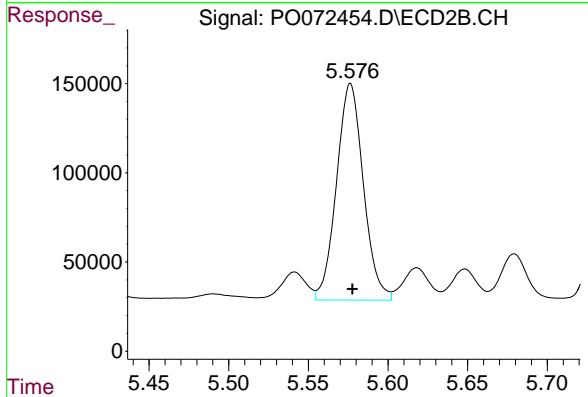
#25 AR-1248-5
 R.T.: 5.618 min
 Delta R.T.: -0.002 min
 Response: 208029
 Conc: 112.63 ng/ml



#26 AR-1254-1

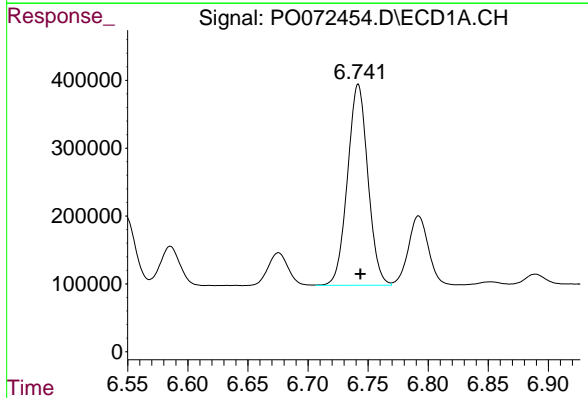
R.T.: 6.515 min
 Delta R.T.: 0.000 min
 Response: 2115513
 Conc: 500.78 ng/ml

Instrument :
 ECD_O
 ClientSampleId :
 AR1254CCC500



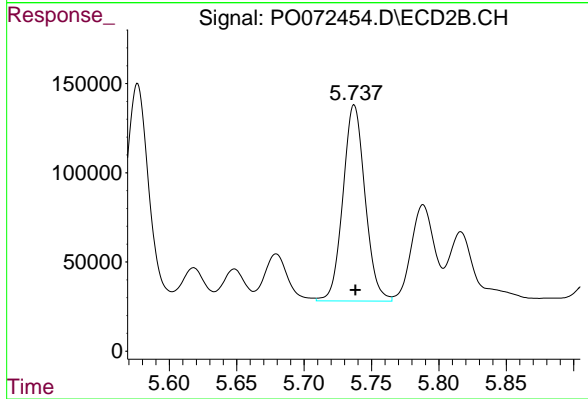
#26 AR-1254-1

R.T.: 5.576 min
 Delta R.T.: -0.001 min
 Response: 1424987
 Conc: 515.52 ng/ml



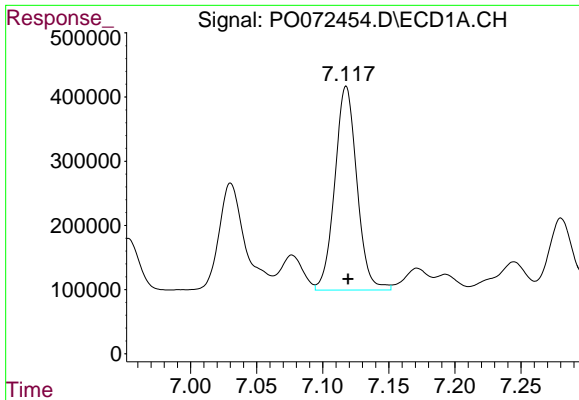
#27 AR-1254-2

R.T.: 6.742 min
 Delta R.T.: -0.002 min
 Response: 3499453
 Conc: 539.96 ng/ml



#27 AR-1254-2

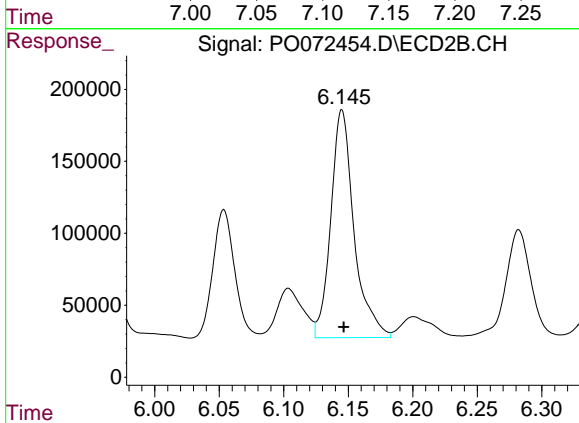
R.T.: 5.737 min
 Delta R.T.: 0.000 min
 Response: 1258833
 Conc: 517.77 ng/ml



#28 AR-1254-3

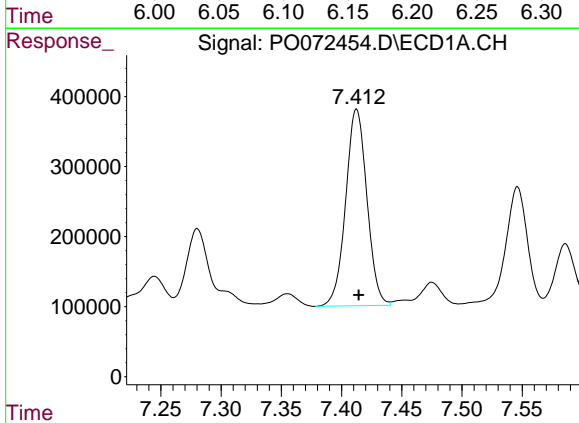
R.T.: 7.118 min
 Delta R.T.: -0.001 min
 Response: 3695122
 Conc: 543.66 ng/ml

Instrument :
 ECD_O
 ClientSampleId :
 AR1254CCC500



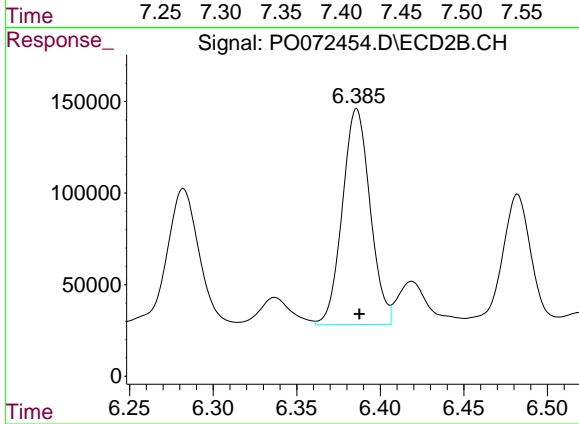
#28 AR-1254-3

R.T.: 6.145 min
 Delta R.T.: -0.001 min
 Response: 1984212
 Conc: 515.64 ng/ml



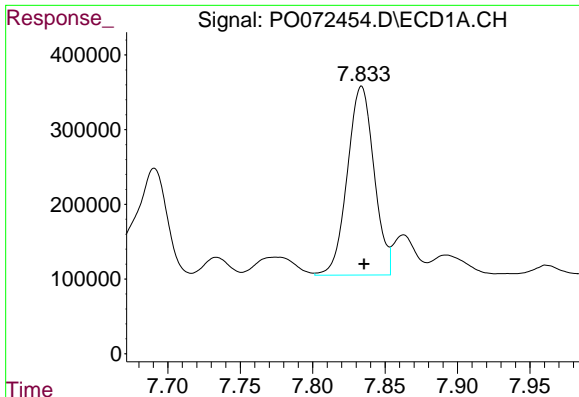
#29 AR-1254-4

R.T.: 7.413 min
 Delta R.T.: -0.002 min
 Response: 3449849
 Conc: 520.48 ng/ml



#29 AR-1254-4

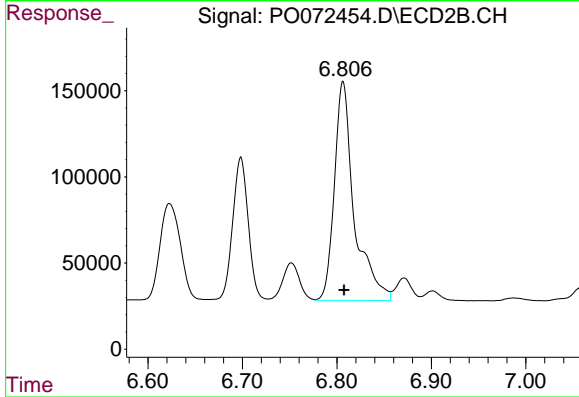
R.T.: 6.386 min
 Delta R.T.: -0.002 min
 Response: 1362939
 Conc: 507.56 ng/ml



#30 AR-1254-5

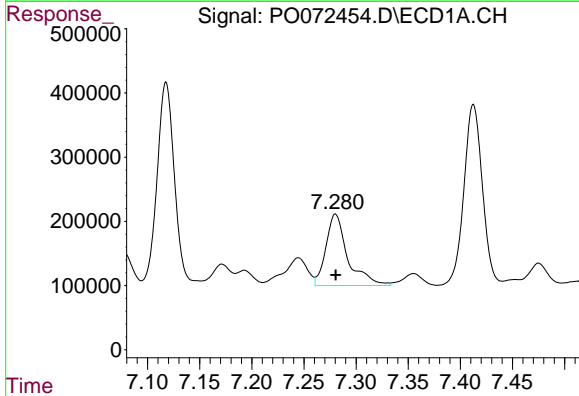
R.T.: 7.834 min
 Delta R.T.: -0.002 min
 Response: 3240074
 Conc: 505.81 ng/ml

Instrument :
 ECD_O
 ClientSampleId :
 AR1254CCC500



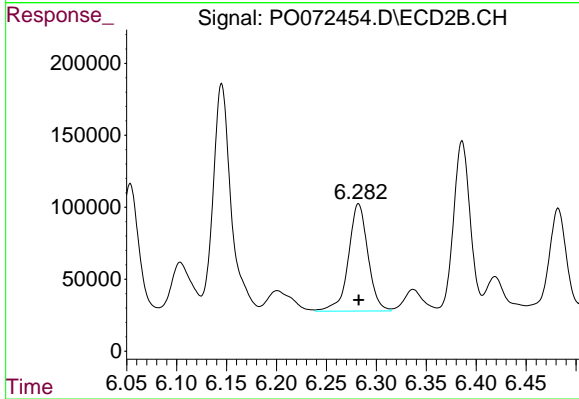
#30 AR-1254-5

R.T.: 6.807 min
 Delta R.T.: -0.001 min
 Response: 1849204
 Conc: 504.60 ng/ml



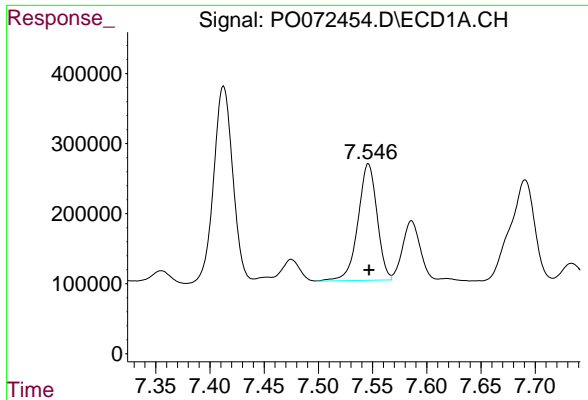
#31 AR-1260-1

R.T.: 7.280 min
 Delta R.T.: 0.000 min
 Response: 1619312
 Conc: 332.29 ng/ml



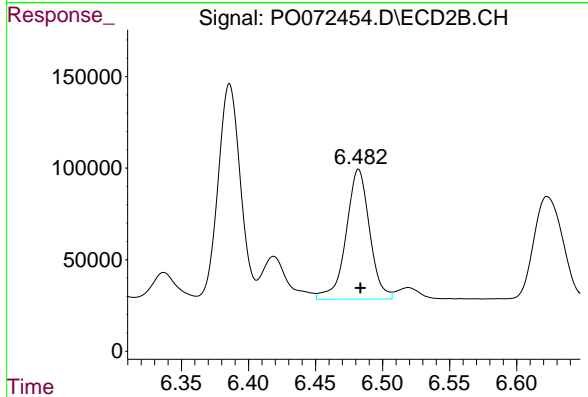
#31 AR-1260-1

R.T.: 6.282 min
 Delta R.T.: 0.000 min
 Response: 1013875
 Conc: 396.32 ng/ml

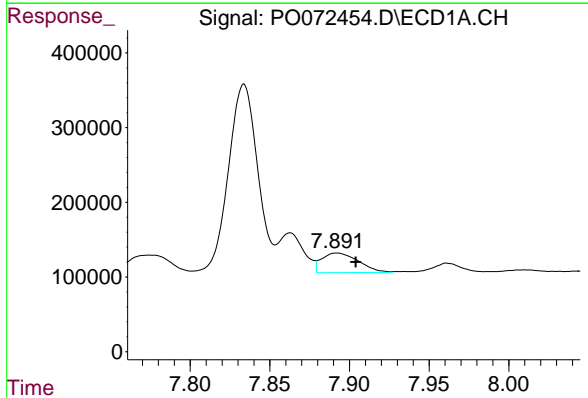


#32 AR-1260-2
 R.T.: 7.546 min
 Delta R.T.: 0.000 min
 Response: 2036292
 Conc: 265.39 ng/ml

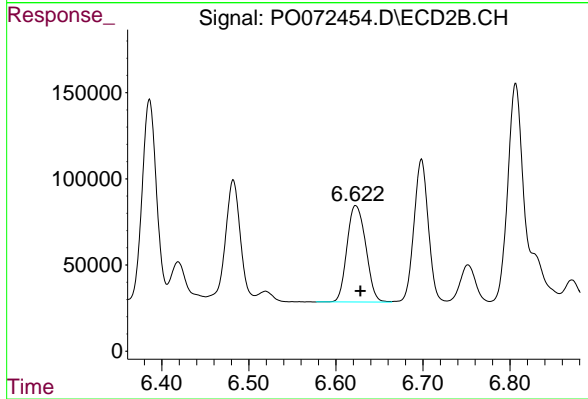
Instrument :
 ECD_O
 ClientSampleId :
 AR1254CCC500



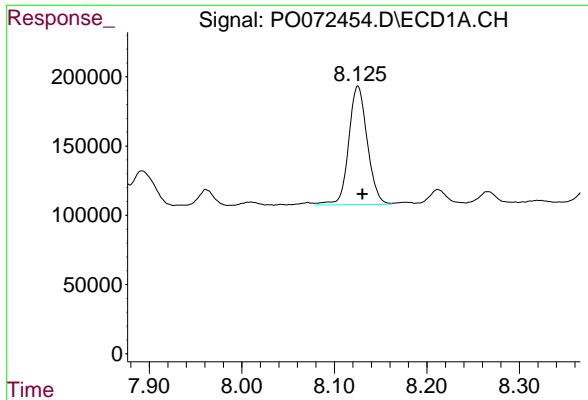
#32 AR-1260-2
 R.T.: 6.482 min
 Delta R.T.: -0.001 min
 Response: 864015
 Conc: 267.95 ng/ml



#33 AR-1260-3
 R.T.: 7.892 min
 Delta R.T.: -0.012 min
 Response: 420851
 Conc: 65.67 ng/ml

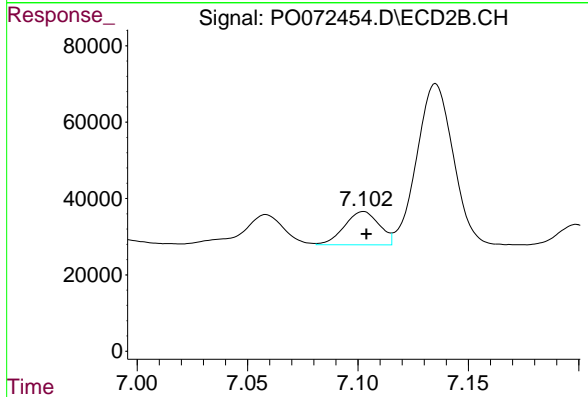


#33 AR-1260-3
 R.T.: 6.623 min
 Delta R.T.: -0.005 min
 Response: 836641
 Conc: 278.76 ng/ml

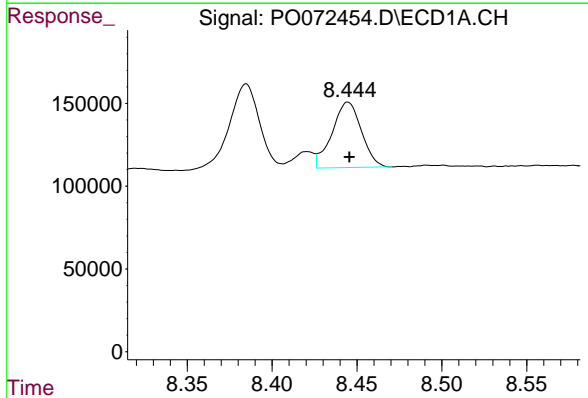


#34 AR-1260-4
 R.T.: 8.126 min
 Delta R.T.: -0.005 min
 Response: 1191852
 Conc: 195.83 ng/ml

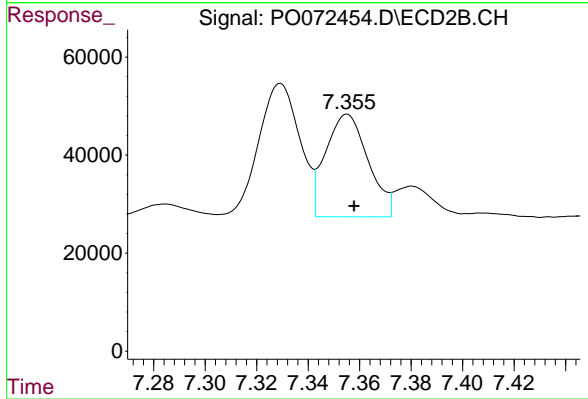
Instrument :
 ECD_O
 ClientSampleId :
 AR1254CCC500



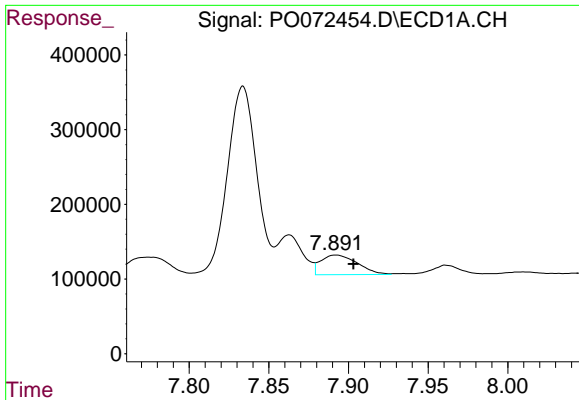
#34 AR-1260-4
 R.T.: 7.103 min
 Delta R.T.: -0.001 min
 Response: 95813
 Conc: 36.34 ng/ml



#35 AR-1260-5
 R.T.: 8.445 min
 Delta R.T.: 0.000 min
 Response: 477730
 Conc: 32.88 ng/ml

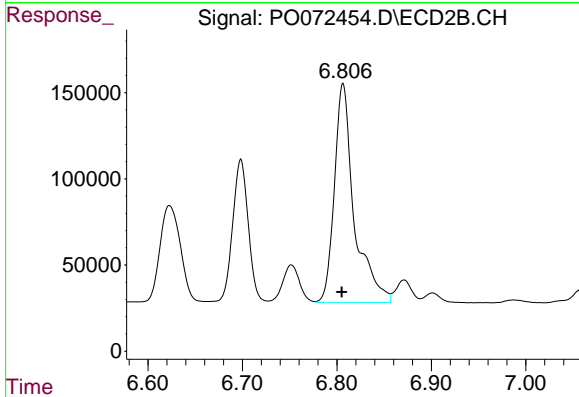


#35 AR-1260-5
 R.T.: 7.355 min
 Delta R.T.: -0.003 min
 Response: 239922
 Conc: 36.72 ng/ml

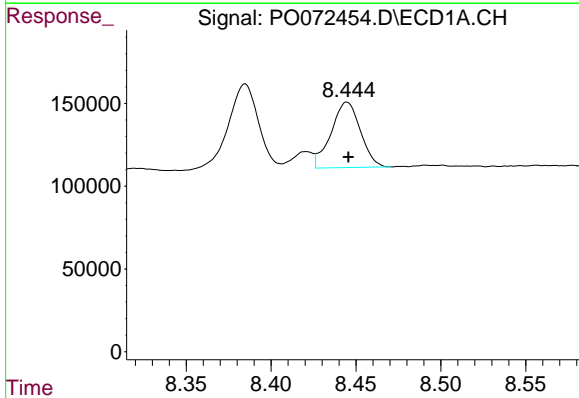


#36 AR-1262-1
 R.T.: 7.892 min
 Delta R.T.: -0.011 min
 Response: 420851
 Conc: 44.38 ng/ml

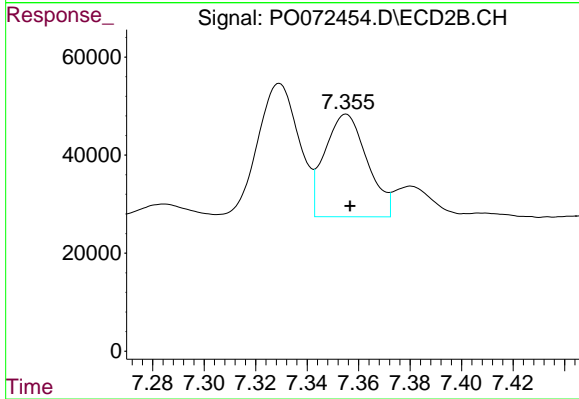
Instrument :
 ECD_O
ClientSampleId :
 AR1254CCC500



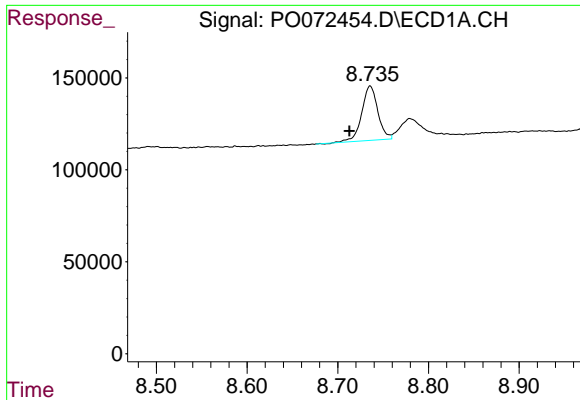
#36 AR-1262-1
 R.T.: 6.807 min
 Delta R.T.: 0.001 min
 Response: 1849204
 Conc: 969.13 ng/ml



#37 AR-1262-2
 R.T.: 8.445 min
 Delta R.T.: 0.000 min
 Response: 477730
 Conc: 29.89 ng/ml



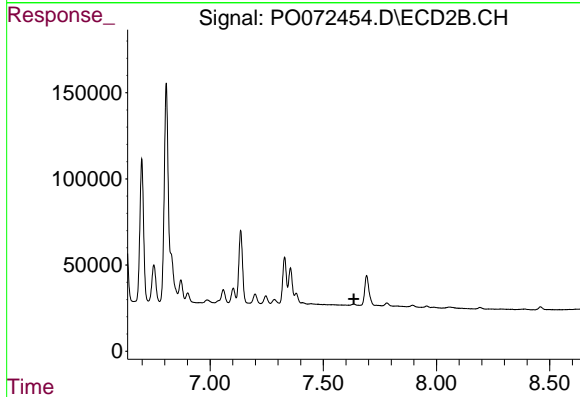
#37 AR-1262-2
 R.T.: 7.355 min
 Delta R.T.: -0.002 min
 Response: 239922
 Conc: 35.92 ng/ml



#38 AR-1262-3

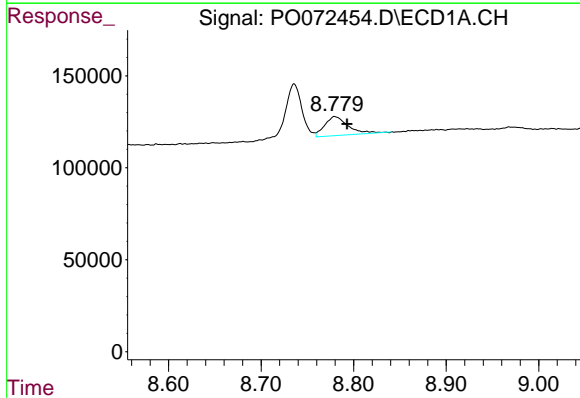
R.T.: 8.736 min
 Delta R.T.: 0.023 min
 Response: 363037
 Conc: 51.95 ng/ml

Instrument :
 ECD_O
 ClientSampleId :
 AR1254CCC500



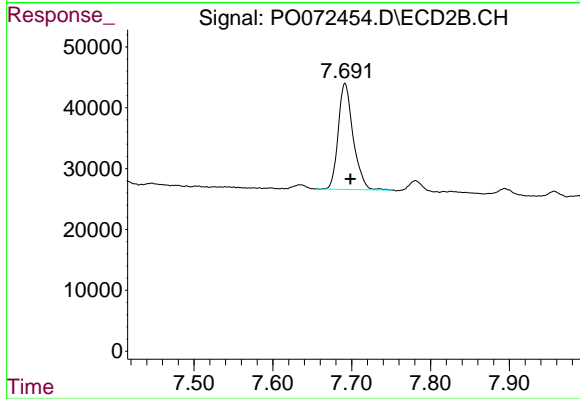
#38 AR-1262-3

R.T.: 0.000 min
 Exp R.T. : 7.635 min
 Response: 0
 Conc: N.D.



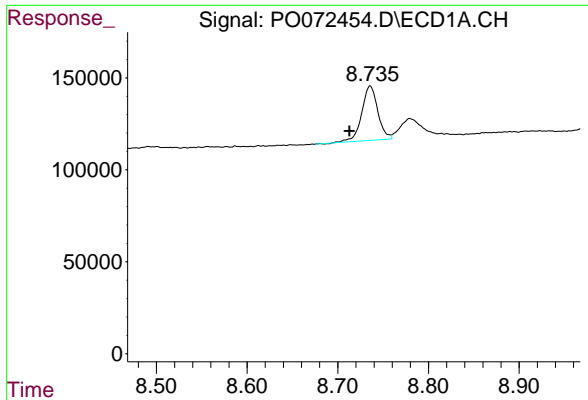
#39 AR-1262-4

R.T.: 8.780 min
 Delta R.T.: -0.013 min
 Response: 183731
 Conc: 45.98 ng/ml



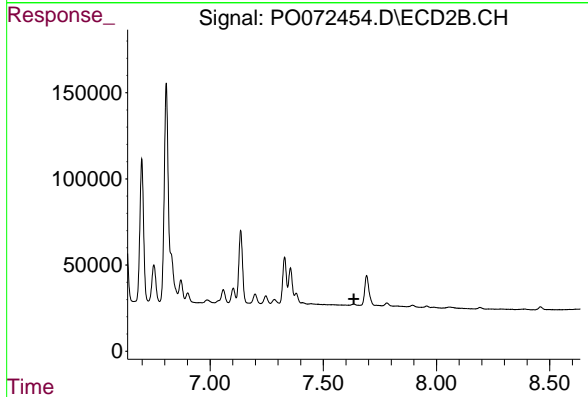
#39 AR-1262-4

R.T.: 7.692 min
 Delta R.T.: -0.007 min
 Response: 229295
 Conc: 44.49 ng/ml

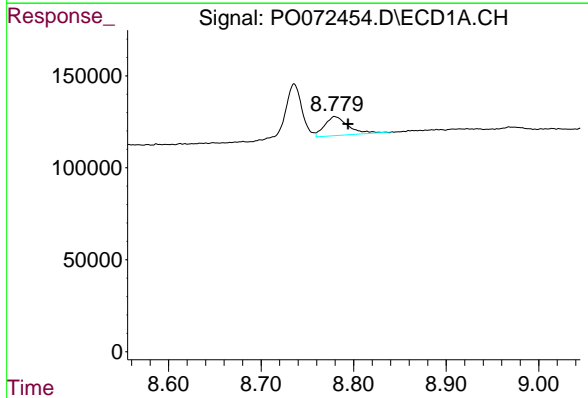


#41 AR-1268-1
 R.T.: 8.736 min
 Delta R.T.: 0.023 min
 Response: 363037
 Conc: 18.86 ng/ml

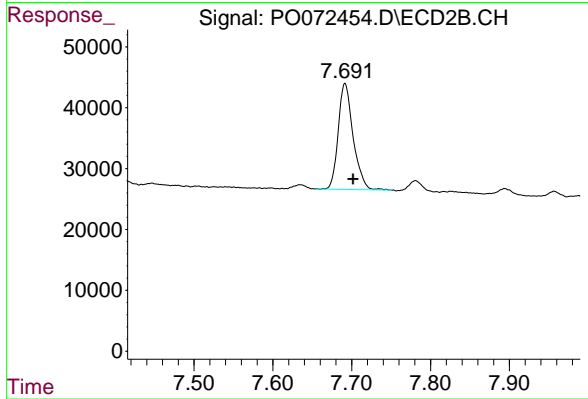
Instrument :
 ECD_O
 ClientSampleId :
 AR1254CCC500



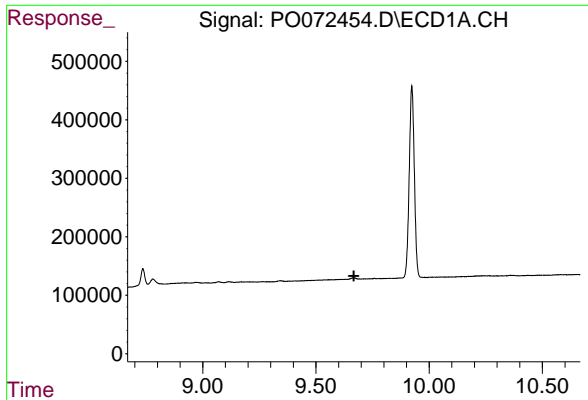
#41 AR-1268-1
 R.T.: 0.000 min
 Exp R.T. : 7.635 min
 Response: 0
 Conc: N.D.



#42 AR-1268-2
 R.T.: 8.780 min
 Delta R.T.: -0.014 min
 Response: 183731
 Conc: 11.13 ng/ml



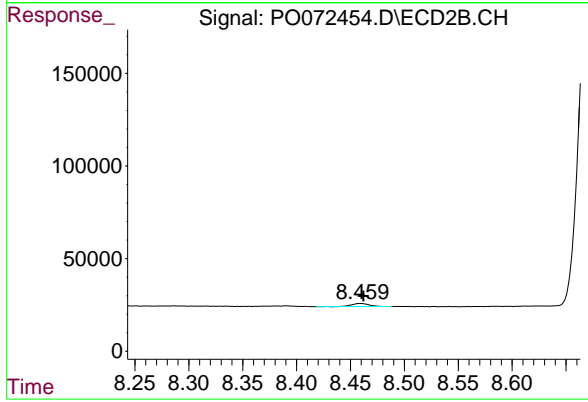
#42 AR-1268-2
 R.T.: 7.692 min
 Delta R.T.: -0.010 min
 Response: 229295
 Conc: 31.51 ng/ml



#45 AR-1268-5

R.T.: 0.000 min
 Exp R.T.: 9.668 min
 Response: 0
 Conc: N.D.

Instrument :
 ECD_O
 ClientSampleId :
 AR1254CCC500



#45 AR-1268-5

R.T.: 8.459 min
 Delta R.T.: -0.003 min
 Response: 19187
 Conc: 1.00 ng/ml