

Data Path : Z:\pestpcbsrv\HPCHEM1\ECD\_0\Data\PO101620\  
 Data File : PO072447.D  
 Signal(s) : Signal #1: ECD1A.CH Signal #2: ECD2B.CH  
 Acq On : 16 Oct 2020 20:01  
 Operator : DD\AJ  
 Sample : L4418-01  
 Misc :  
 ALS Vial : 25 Sample Multiplier: 1

Instrument :  
 ECD\_0  
 ClientSampleId :  
 PB-2020-WS-000-02

Integration File signal 1: autoint1.e  
 Integration File signal 2: autoint2.e  
 Quant Time: Oct 17 06:24:23 2020  
 Quant Method : Z:\pestpcbsrv\HPCHEM1\ECD\_0\methods\PO101420.M  
 Quant Title : GC EXTRACTABLES  
 QLast Update : Wed Oct 14 17:47:24 2020  
 Response via : Initial Calibration  
 Integrator: ChemStation 6890 Scale Mode: Small noise peaks clipped

Volume Inj. : 2 µl  
 Signal #1 Phase : ZB-MR1 Signal #2 Phase: ZB-MR2  
 Signal #1 Info : 30Mx0.32mmx 0.50µ Signal #2 Info : 30M x 0.32mm x 0.25µm

Compound	RT#1	RT#2	Resp#1	Resp#2	ng/ml	ng/ml
-----						
System Monitoring Compounds						
1) SA Tetrachlo...	4.322	3.505	1813262	957822	21.378	22.739
2) SA Decachlor...	9.925	8.672	2002452	969622	18.154	18.757

Target Compounds

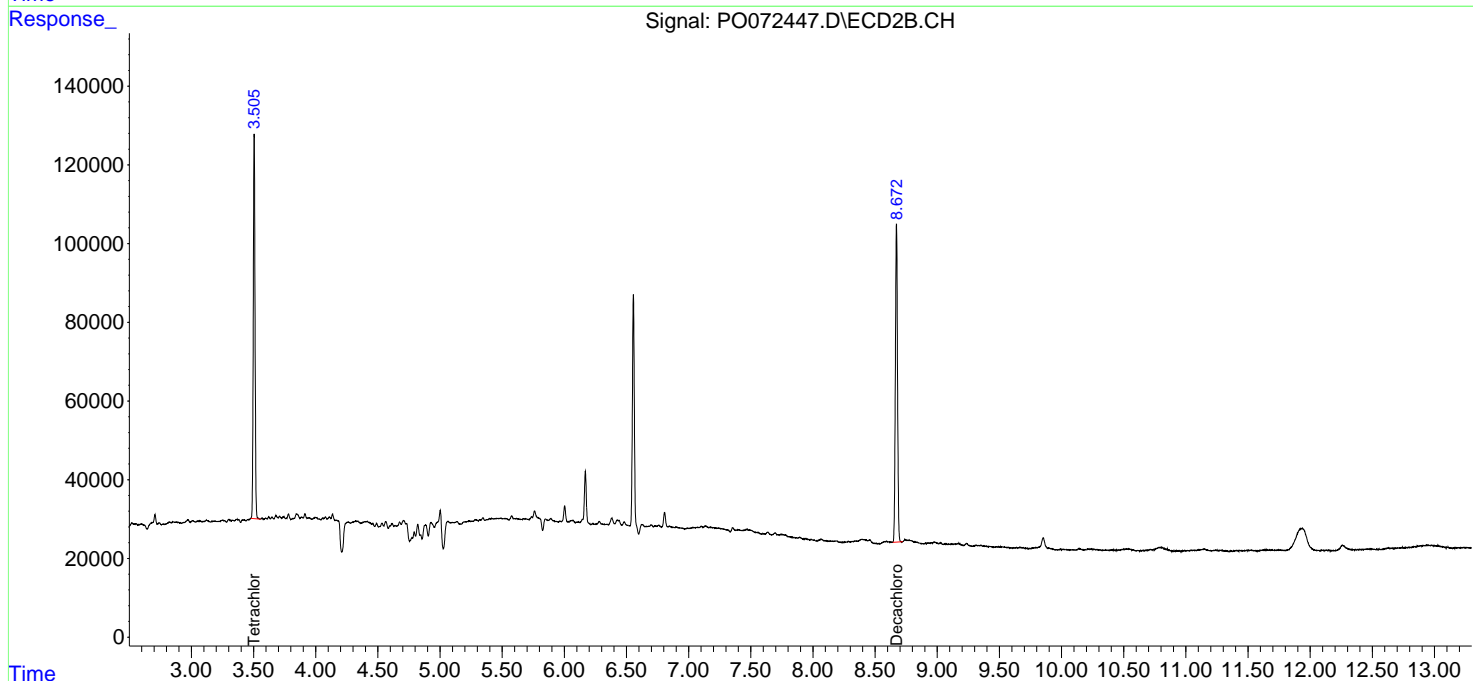
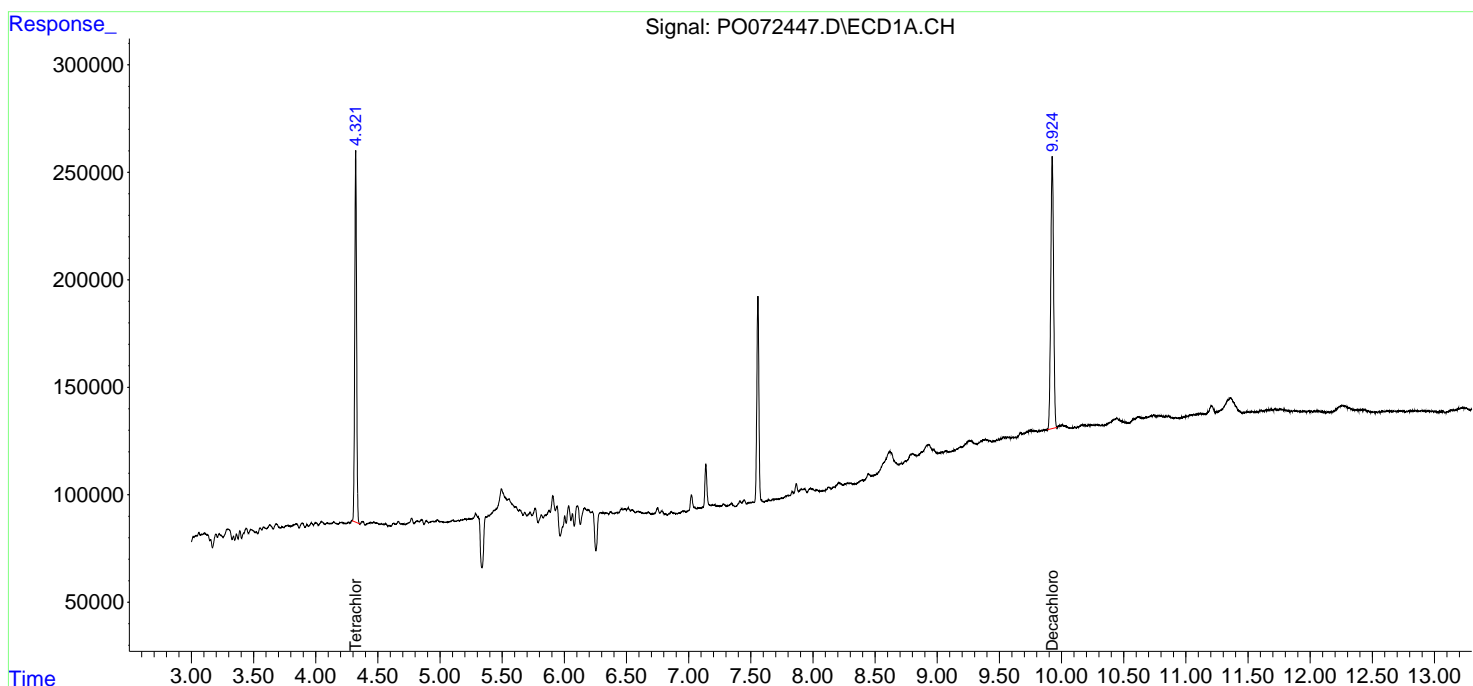
(f)=RT Delta > 1/2 Window (#)=Amounts differ by > 25% (m)=manual int.

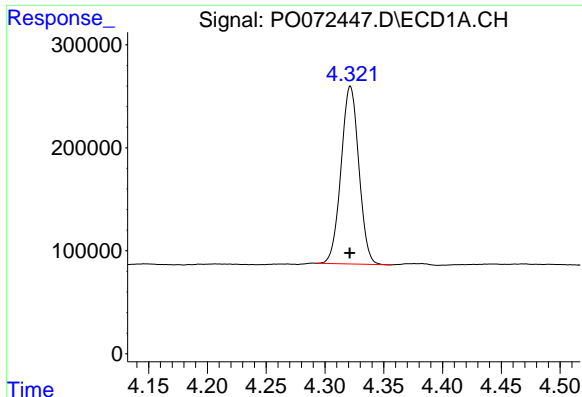
Data Path : Z:\pestpcbsrv\HPCHEM1\ECD\_O\Data\PO101620\  
 Data File : PO072447.D  
 Signal(s) : Signal #1: ECD1A.CH Signal #2: ECD2B.CH  
 Acq On : 16 Oct 2020 20:01  
 Operator : DD\AJ  
 Sample : L4418-01  
 Misc :  
 ALS Vial : 25 Sample Multiplier: 1

**Instrument :**  
 ECD\_O  
**ClientSampleId :**  
 PB-2020-WS-000-02

Integration File signal 1: autoint1.e  
 Integration File signal 2: autoint2.e  
 Quant Time: Oct 17 06:24:23 2020  
 Quant Method : Z:\pestpcbsrv\HPCHEM1\ECD\_O\methods\PO101420.M  
 Quant Title : GC EXTRACTABLES  
 QLast Update : Wed Oct 14 17:47:24 2020  
 Response via : Initial Calibration  
 Integrator: ChemStation 6890 Scale Mode: Small noise peaks clipped

Volume Inj. : 2 µl  
 Signal #1 Phase : ZB-MR1 Signal #2 Phase: ZB-MR2  
 Signal #1 Info : 30Mx0.32mmx 0.50µ Signal #2 Info : 30M x 0.32mm x 0.25µm

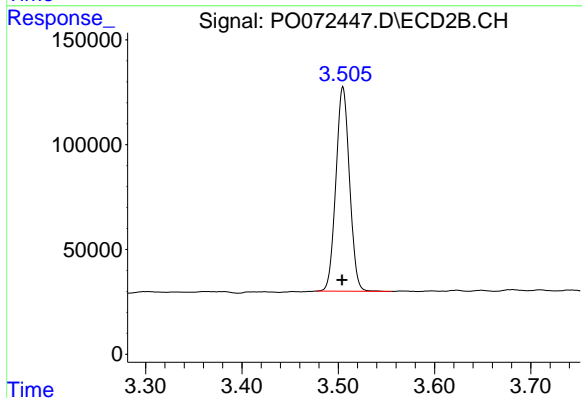




#1 Tetrachloro-m-xylene

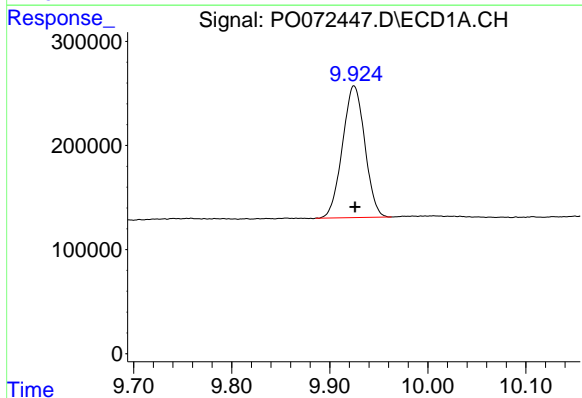
R.T.: 4.322 min  
Delta R.T.: 0.000 min  
Response: 1813262  
Conc: 21.38 ng/ml

Instrument :  
ECD\_O  
ClientSampleId :  
PB-2020-WS-000-02



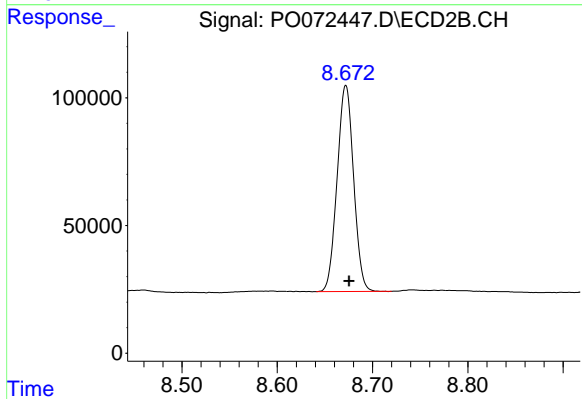
#1 Tetrachloro-m-xylene

R.T.: 3.505 min  
Delta R.T.: 0.000 min  
Response: 957822  
Conc: 22.74 ng/ml



#2 Decachlorobiphenyl

R.T.: 9.925 min  
Delta R.T.: -0.001 min  
Response: 2002452  
Conc: 18.15 ng/ml



#2 Decachlorobiphenyl

R.T.: 8.672 min  
Delta R.T.: -0.003 min  
Response: 969622  
Conc: 18.76 ng/ml