

Data Path : Z:\pestpcbsrv\HPCHEM1\ECD_O\Data\P0101624\
 Data File : P0107266.D
 Signal(s) : Signal #1: ECD1A.ch Signal #2: ECD2B.ch
 Acq On : 17 Oct 2024 08:09
 Operator : YP/AJ
 Sample : AR1660CCC500
 Misc :
 ALS Vial : 3 Sample Multiplier: 1

Instrument :
 ECD_O
 ClientSampleId :
 AR1660CCC500

Integration File signal 1: autoint1.e
 Integration File signal 2: autoint2.e
 Quant Time: Oct 17 08:39:48 2024
 Quant Method : Z:\pestpcbsrv\HPCHEM1\ECD_O\methods\P0101524.M
 Quant Title : GC EXTRACTABLES
 QLast Update : Wed Oct 16 04:53:16 2024
 Response via : Initial Calibration
 Integrator: ChemStation

Volume Inj. : 2 µl
 Signal #1 Phase : ZB-MR1 Signal #2 Phase: ZB-MR2
 Signal #1 Info : 30Mx0.32mmx 0.50µ Signal #2 Info : 30M x 0.32mm x 0.25µm

Compound	RT#1	RT#2	Resp#1	Resp#2	ng/ml	ng/ml

System Monitoring Compounds						
1) SA Tetrachlo...	4.372	3.644	507.1E6	180.7E6	55.640	56.132
2) SA Decachlor...	10.052	8.635	136.7E6	146.8E6	55.724	53.551
Target Compounds						
3) L1 AR-1016-1	5.519	4.725	147.9E6	58718090	548.282	568.612
4) L1 AR-1016-2	5.542	4.744	213.6E6	81368575	538.097	577.214
5) L1 AR-1016-3	5.604	4.920	136.1E6	44352989	541.693	563.244
6) L1 AR-1016-4	5.701	4.961	105.7E6	36225049	548.569	547.965
7) L1 AR-1016-5	5.995	5.174	103.9E6	46071226	568.793	560.929
31) L7 AR-1260-1	7.122	6.205	133.3E6	87485437	515.616	563.860
32) L7 AR-1260-2	7.378	6.392	139.7E6	102.1E6	530.835	579.954
33) L7 AR-1260-3	7.740	6.546	94642042	95849610	526.535	571.390
34) L7 AR-1260-4	7.964	7.015	93210536	82757265	531.102	571.999
35) L7 AR-1260-5	8.276	7.256	150.7E6	196.3E6	529.868	595.720

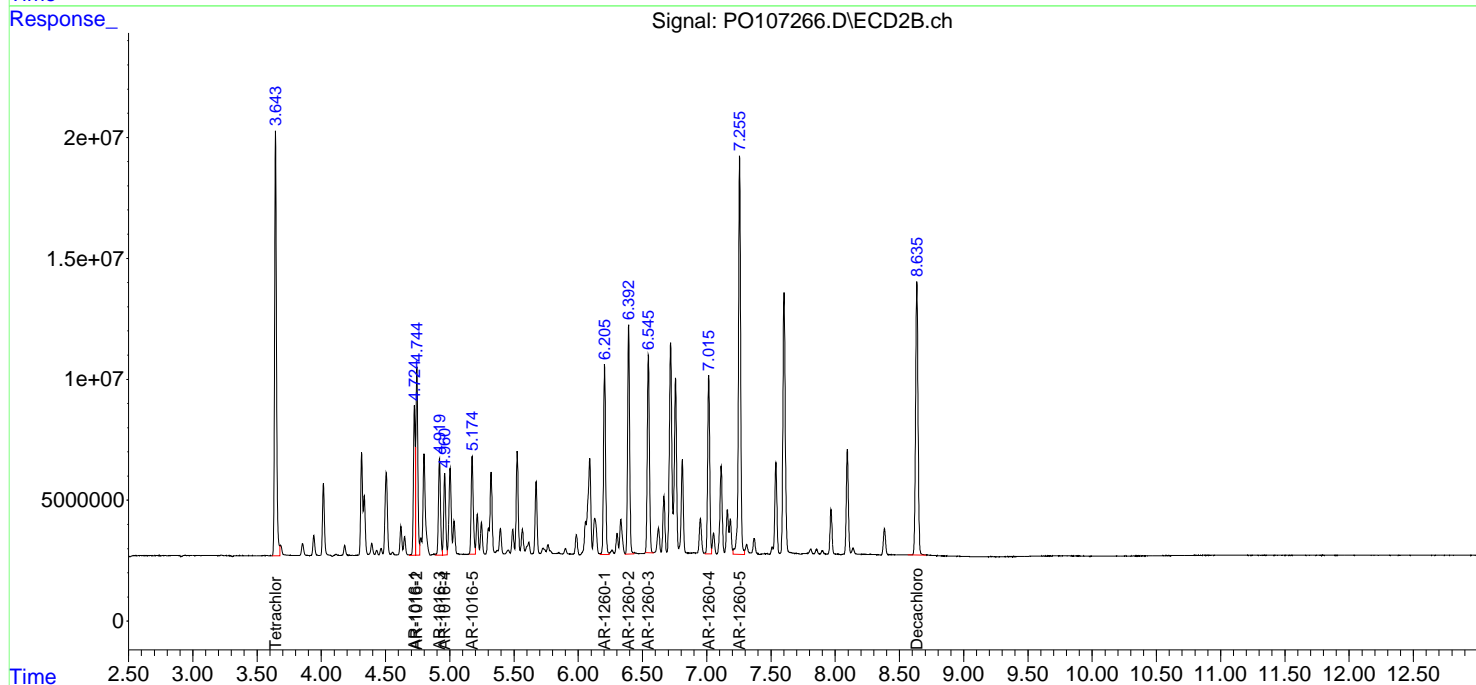
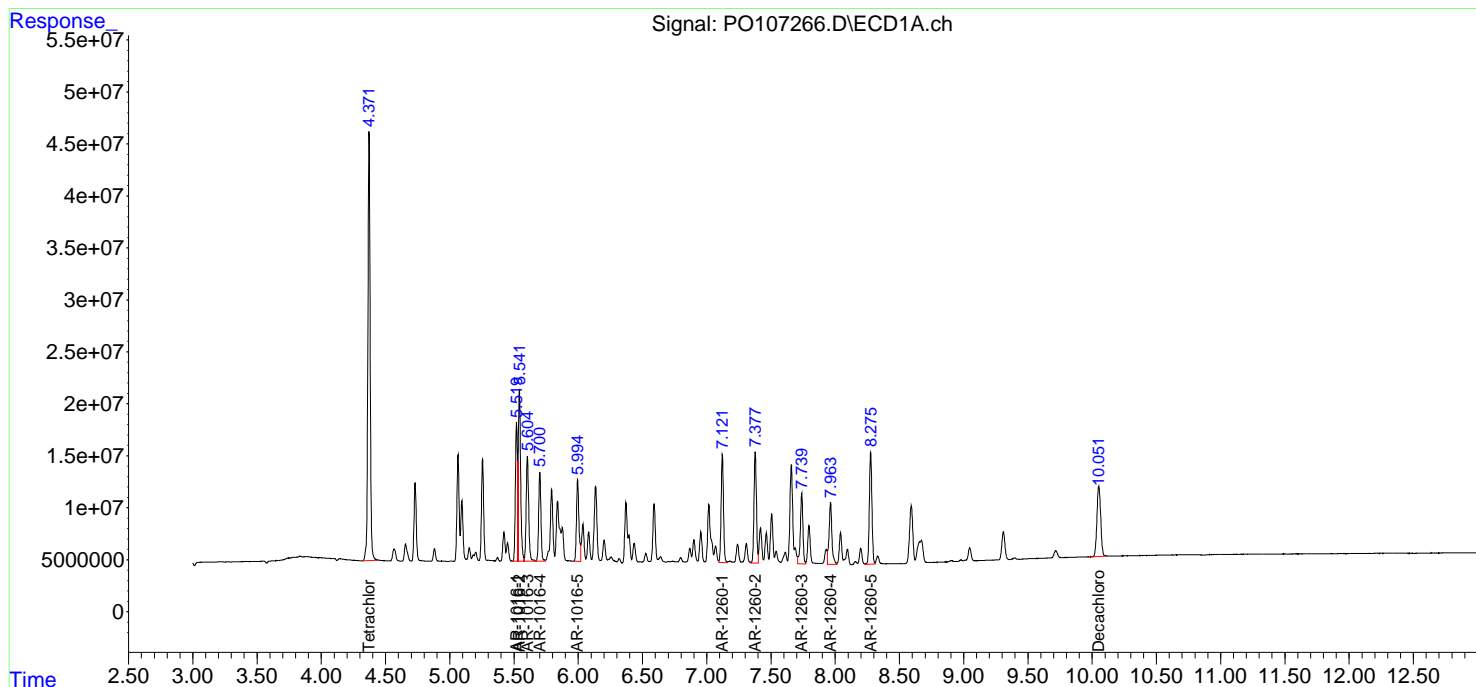
(f)=RT Delta > 1/2 Window (#)=Amounts differ by > 25% (m)=manual int.

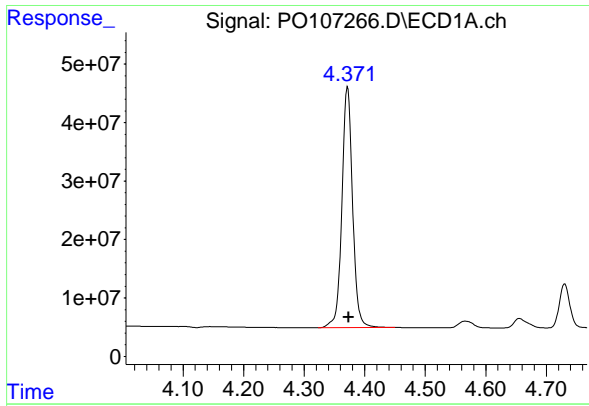
Data Path : Z:\pestpcbsrv\HPCHEM1\ECD_O\Data\PO101624\
 Data File : PO107266.D
 Signal(s) : Signal #1: ECD1A.ch Signal #2: ECD2B.ch
 Acq On : 17 Oct 2024 08:09
 Operator : YP/AJ
 Sample : AR1660CCC500
 Misc :
 ALS Vial : 3 Sample Multiplier: 1

Instrument :
 ECD_O
 ClientSampleId :
 AR1660CCC500

Integration File signal 1: autoint1.e
 Integration File signal 2: autoint2.e
 Quant Time: Oct 17 08:39:48 2024
 Quant Method : Z:\pestpcbsrv\HPCHEM1\ECD_O\methods\PO101524.M
 Quant Title : GC EXTRACTABLES
 QLast Update : Wed Oct 16 04:53:16 2024
 Response via : Initial Calibration
 Integrator: ChemStation

Volume Inj. : 2 µl
 Signal #1 Phase : ZB-MR1 Signal #2 Phase: ZB-MR2
 Signal #1 Info : 30Mx0.32mmx 0.50µm Signal #2 Info : 30M x 0.32mm x 0.25µm

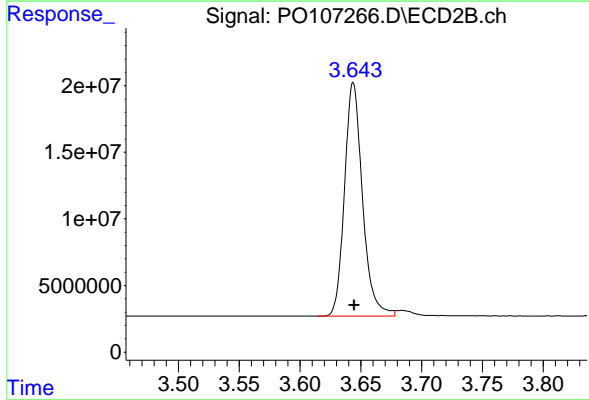




#1 Tetrachloro-m-xylene

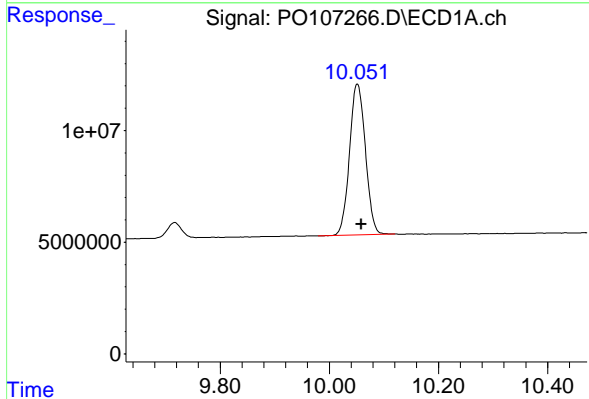
R.T.: 4.372 min
 Delta R.T.: -0.002 min
 Response: 507093315
 Conc: 55.64 ng/ml

Instrument :
 ECD_O
 ClientSampleId :
 AR1660CCC500



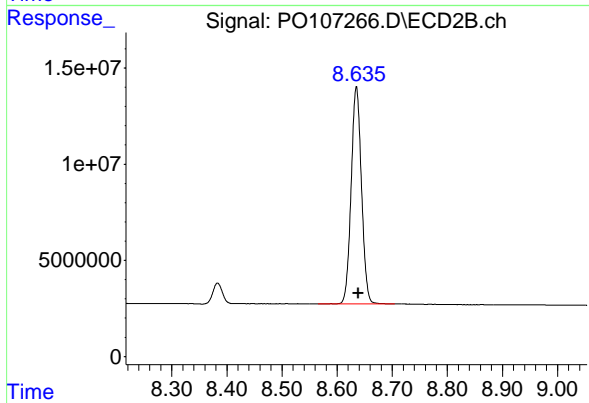
#1 Tetrachloro-m-xylene

R.T.: 3.644 min
 Delta R.T.: 0.000 min
 Response: 180661326
 Conc: 56.13 ng/ml



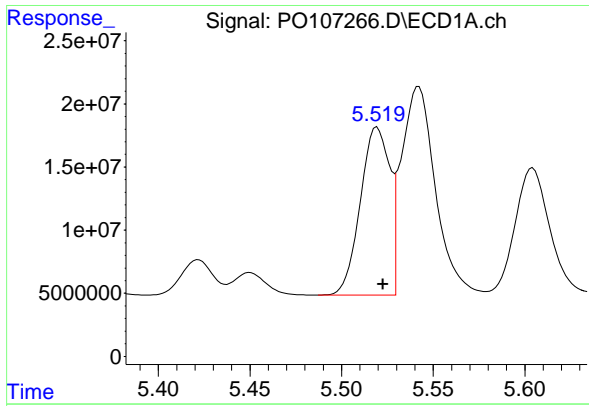
#2 Decachlorobiphenyl

R.T.: 10.052 min
 Delta R.T.: -0.007 min
 Response: 136713017
 Conc: 55.72 ng/ml



#2 Decachlorobiphenyl

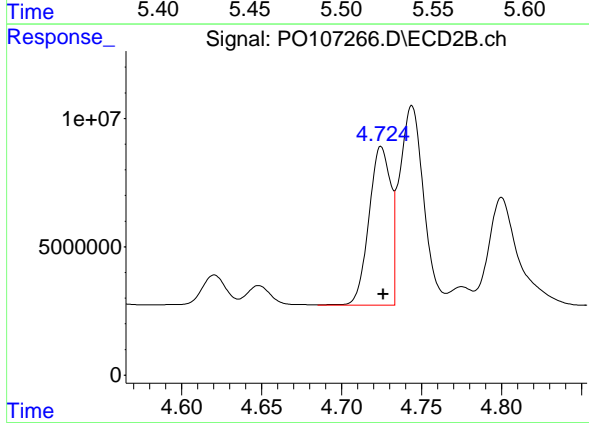
R.T.: 8.635 min
 Delta R.T.: -0.004 min
 Response: 146814946
 Conc: 53.55 ng/ml



#3 AR-1016-1

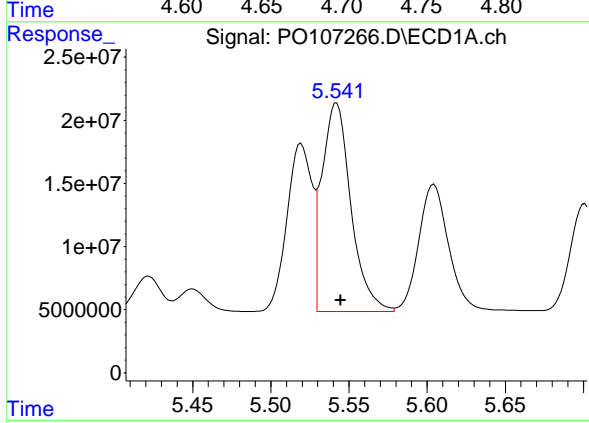
R.T.: 5.519 min
 Delta R.T.: -0.003 min
 Response: 147934210
 Conc: 548.28 ng/ml

Instrument :
 ECD_O
 ClientSampleId :
 AR1660CCC500



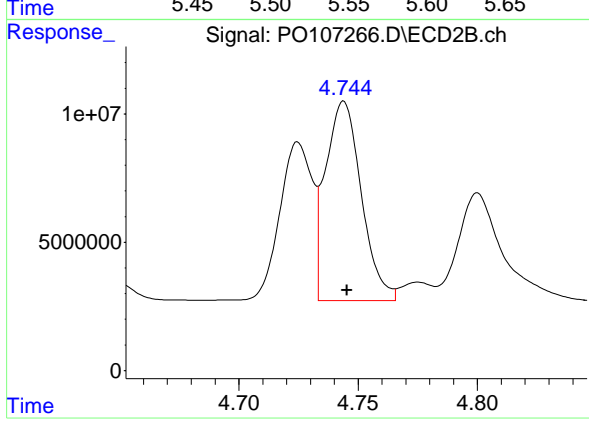
#3 AR-1016-1

R.T.: 4.725 min
 Delta R.T.: -0.001 min
 Response: 58718090
 Conc: 568.61 ng/ml



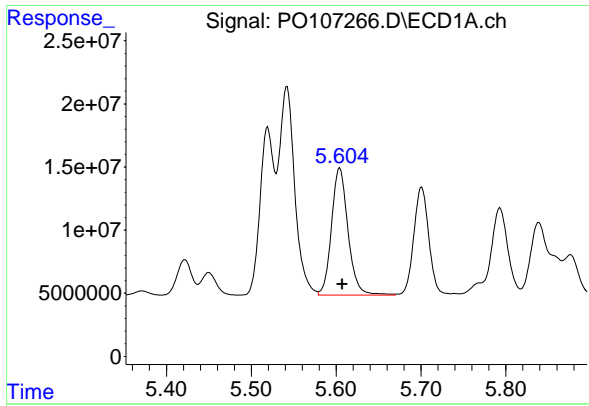
#4 AR-1016-2

R.T.: 5.542 min
 Delta R.T.: -0.003 min
 Response: 213562579
 Conc: 538.10 ng/ml



#4 AR-1016-2

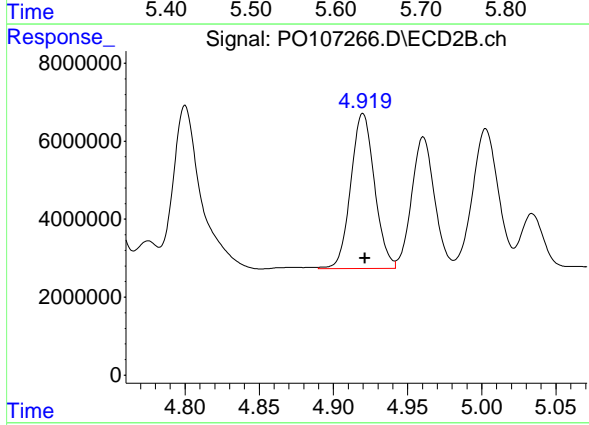
R.T.: 4.744 min
 Delta R.T.: -0.001 min
 Response: 81368575
 Conc: 577.21 ng/ml



#5 AR-1016-3

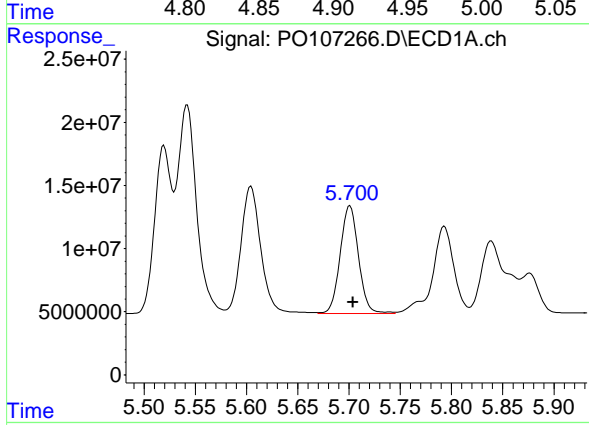
R.T.: 5.604 min
 Delta R.T.: -0.003 min
 Response: 136056696
 Conc: 541.69 ng/ml

Instrument :
 ECD_O
 ClientSampleId :
 AR1660CCC500



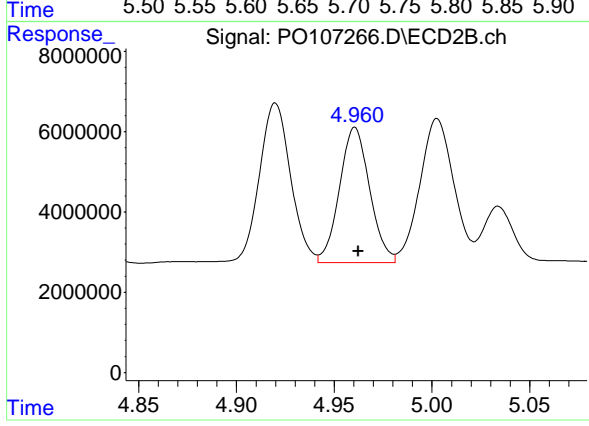
#5 AR-1016-3

R.T.: 4.920 min
 Delta R.T.: -0.001 min
 Response: 44352989
 Conc: 563.24 ng/ml



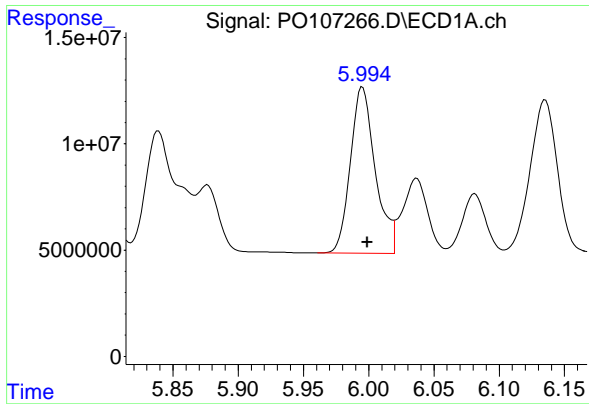
#6 AR-1016-4

R.T.: 5.701 min
 Delta R.T.: -0.003 min
 Response: 105660915
 Conc: 548.57 ng/ml



#6 AR-1016-4

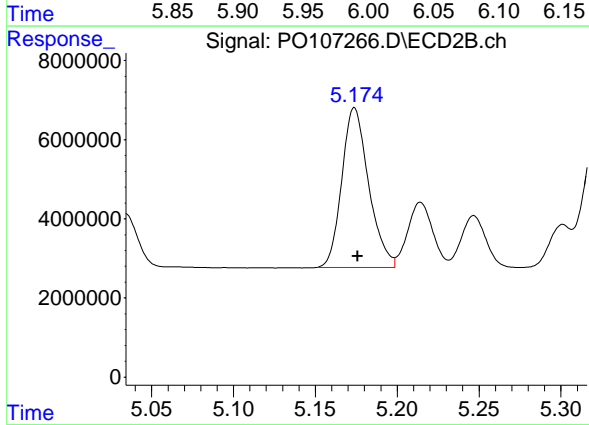
R.T.: 4.961 min
 Delta R.T.: -0.002 min
 Response: 36225049
 Conc: 547.96 ng/ml



#7 AR-1016-5

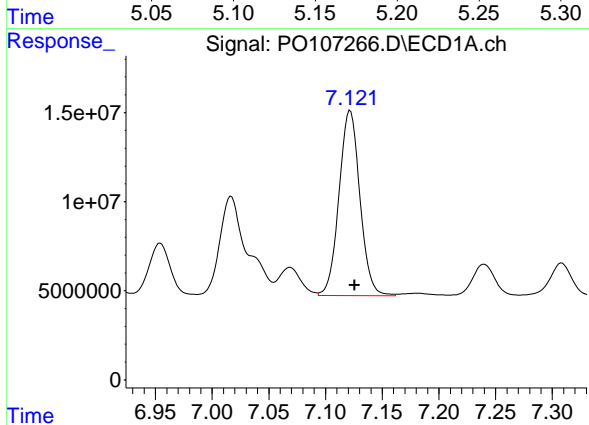
R.T.: 5.995 min
 Delta R.T.: -0.004 min
 Response: 103891993
 Conc: 568.79 ng/ml

Instrument :
 ECD_O
 ClientSampleId :
 AR1660CCC500



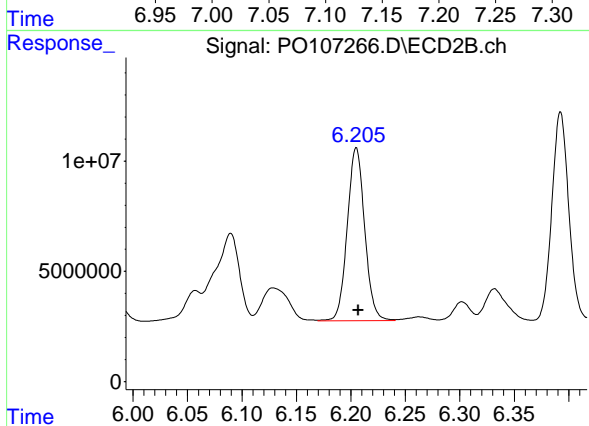
#7 AR-1016-5

R.T.: 5.174 min
 Delta R.T.: -0.002 min
 Response: 46071226
 Conc: 560.93 ng/ml



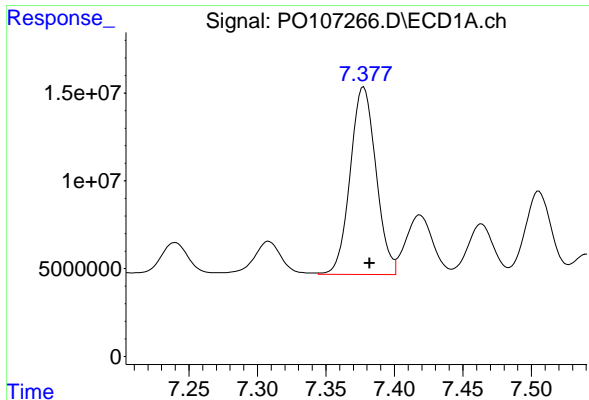
#31 AR-1260-1

R.T.: 7.122 min
 Delta R.T.: -0.004 min
 Response: 133332371
 Conc: 515.62 ng/ml



#31 AR-1260-1

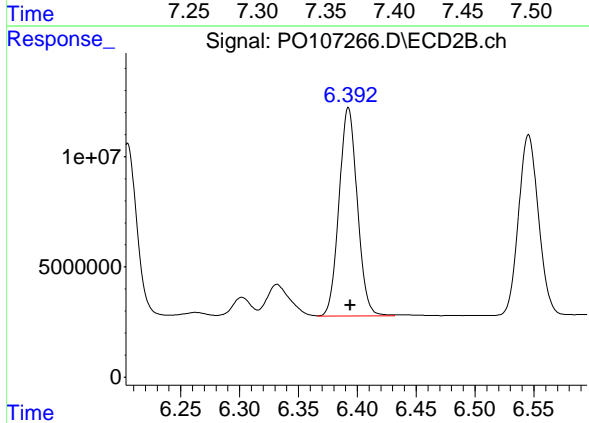
R.T.: 6.205 min
 Delta R.T.: -0.002 min
 Response: 87485437
 Conc: 563.86 ng/ml



#32 AR-1260-2

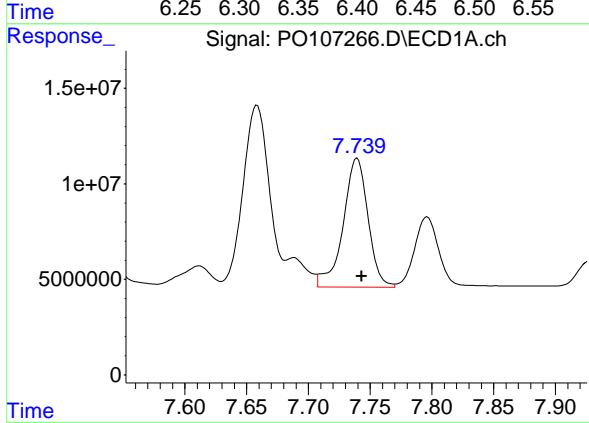
R.T.: 7.378 min
 Delta R.T.: -0.004 min
 Response: 139726435
 Conc: 530.83 ng/ml

Instrument :
 ECD_O
 ClientSampleId :
 AR1660CCC500



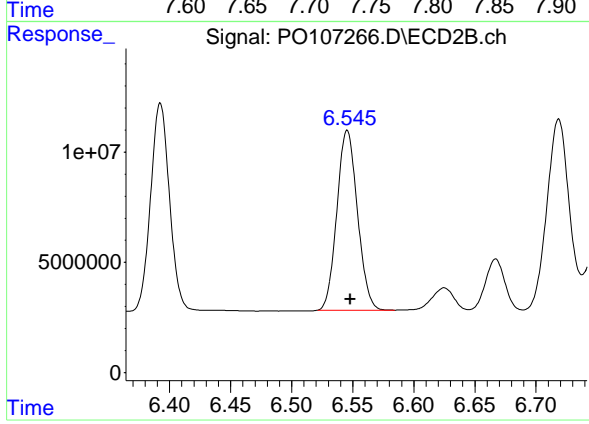
#32 AR-1260-2

R.T.: 6.392 min
 Delta R.T.: -0.002 min
 Response: 102139001
 Conc: 579.95 ng/ml



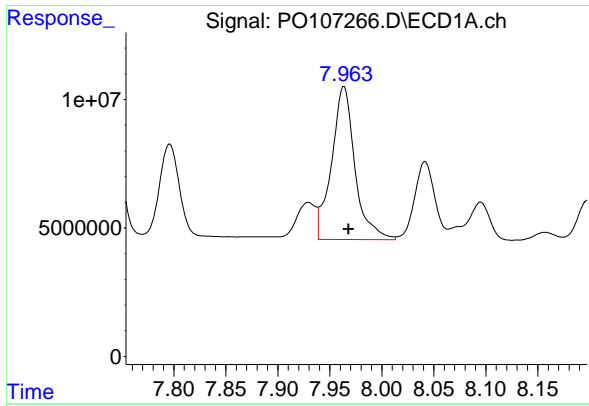
#33 AR-1260-3

R.T.: 7.740 min
 Delta R.T.: -0.004 min
 Response: 94642042
 Conc: 526.53 ng/ml



#33 AR-1260-3

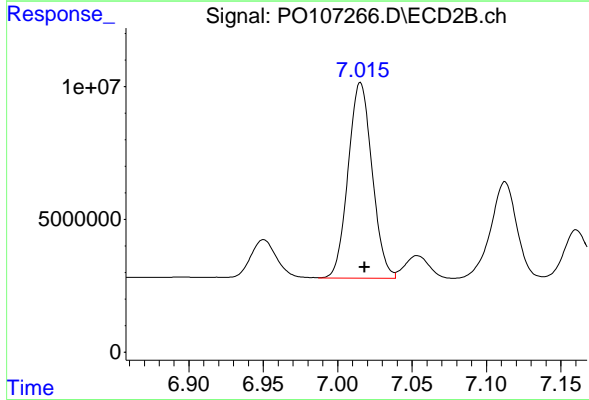
R.T.: 6.546 min
 Delta R.T.: -0.002 min
 Response: 95849610
 Conc: 571.39 ng/ml



#34 AR-1260-4

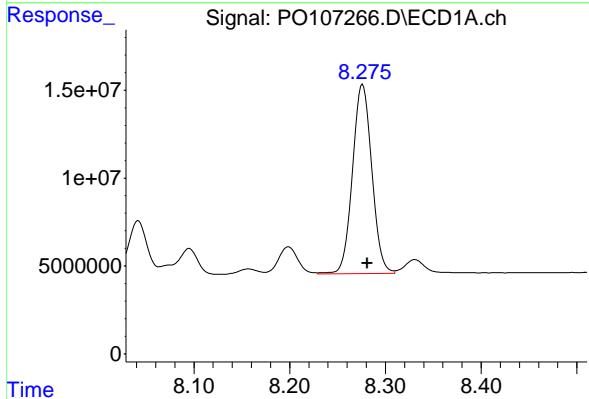
R.T.: 7.964 min
 Delta R.T.: -0.004 min
 Response: 93210536
 Conc: 531.10 ng/ml

Instrument :
 ECD_O
 ClientSampleId :
 AR1660CCC500



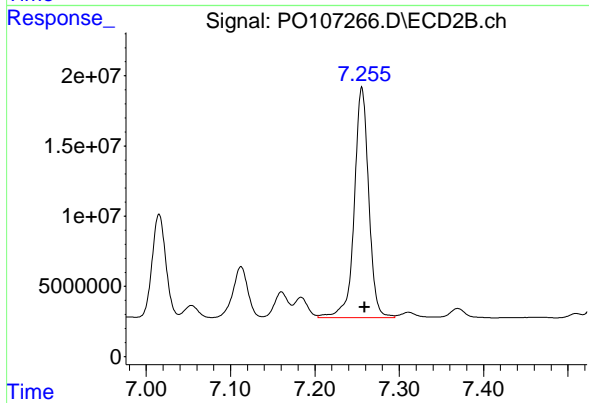
#34 AR-1260-4

R.T.: 7.015 min
 Delta R.T.: -0.003 min
 Response: 82757265
 Conc: 572.00 ng/ml



#35 AR-1260-5

R.T.: 8.276 min
 Delta R.T.: -0.005 min
 Response: 150691100
 Conc: 529.87 ng/ml



#35 AR-1260-5

R.T.: 7.256 min
 Delta R.T.: -0.003 min
 Response: 196254401
 Conc: 595.72 ng/ml