

Data Path : Z:\pestpcbsrv\HPCHEM1\ECD\_0\Data\PO101818\  
 Data File : PO050206.D  
 Signal(s) : Signal #1: ECD1A.CH Signal #2: ECD2B.CH  
 Acq On : 18 Oct 2018 18:33  
 Operator : SM/SJ  
 Sample : AR1268ICC500  
 Misc :  
 ALS Vial : 14 Sample Multiplier: 1

Instrument :  
 ECD\_0  
 ClientSampleId :  
 AR1268ICC500

Integration File signal 1: autoint1.e  
 Integration File signal 2: autoint2.e  
 Quant Time: Oct 19 01:27:58 2018  
 Quant Method : Z:\pestpcbsrv\HPCHEM1\ECD\_0\methods\PO101818.M  
 Quant Title : GC EXTRACTABLES  
 QLast Update : Fri Oct 19 01:27:36 2018  
 Response via : Initial Calibration  
 Integrator: ChemStation 6890 Scale Mode: Small noise peaks clipped

Volume Inj. : 2 µl  
 Signal #1 Phase : ZB-MR1 Signal #2 Phase: ZB-MR2  
 Signal #1 Info : 30Mx0.32mmx 0.50µ Signal #2 Info : 30M x 0.32mm x 0.25µm

Compound	RT#1	RT#2	Resp#1	Resp#2	ng/ml	ng/ml
-----						
System Monitoring Compounds						
1) SA Tetrachlo...	4.351	3.359	12625616	8249639	50.000	50.000
2) SA Decachlor...	10.085	8.116	17265777	15656511	50.000	50.000
Target Compounds						
41) L9 AR-1268-1	8.613	7.087	16615251	16850368	500.000	500.000
42) L9 AR-1268-2	8.706	7.149	15331033	15658792	500.000	500.000
43) L9 AR-1268-3	8.928	7.349	13116276	13515074	500.000	500.000
44) L9 AR-1268-4	9.351	7.633	4928983	4877623	500.000	500.000
45) L9 AR-1268-5	9.756	7.899	38603430	37902351	500.000	500.000
-----						

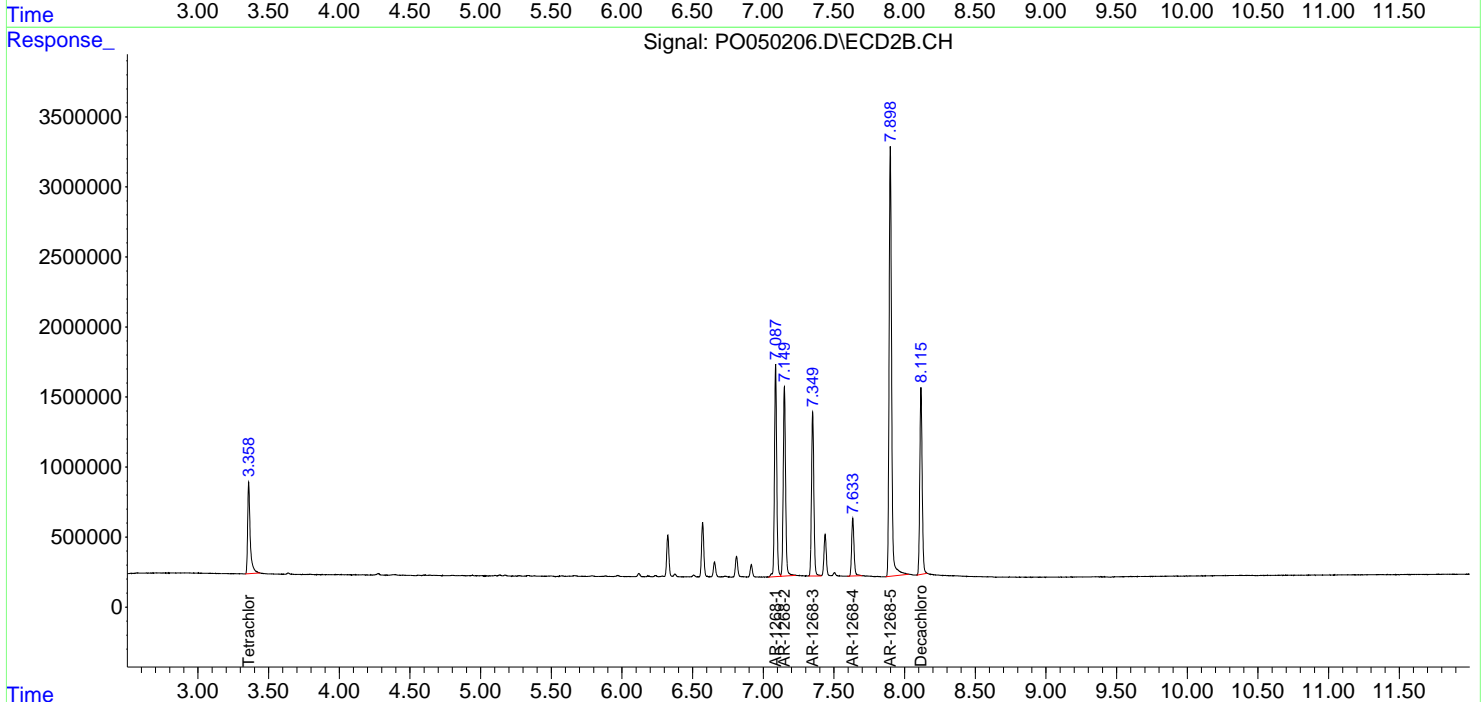
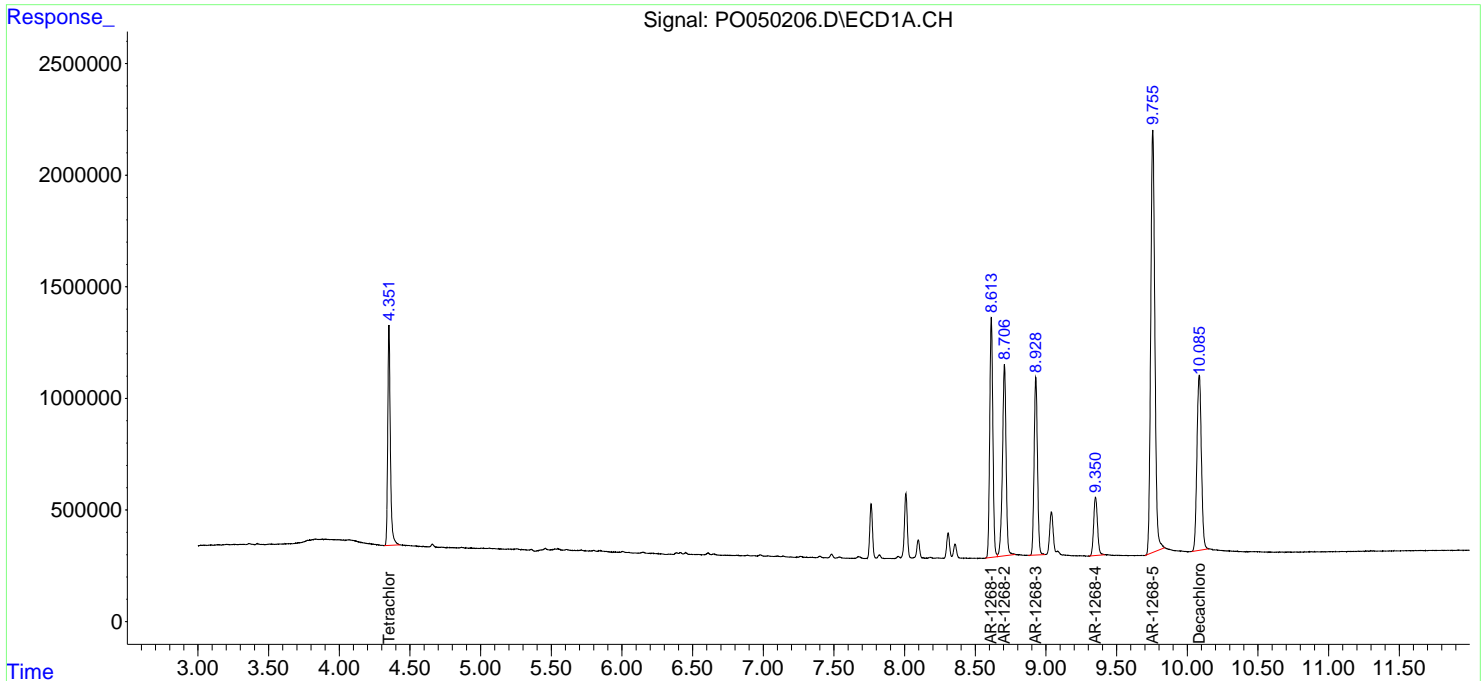
(f)=RT Delta > 1/2 Window (#)=Amounts differ by > 25% (m)=manual int.

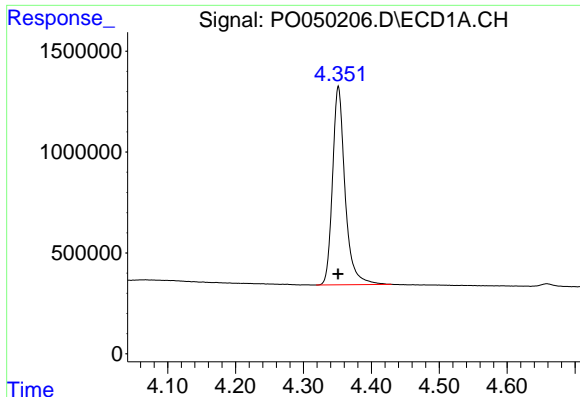
Data Path : Z:\pestpcbsrv\HPCHEM1\ECD\_0\Data\PO101818\  
 Data File : P0050206.D  
 Signal(s) : Signal #1: ECD1A.CH Signal #2: ECD2B.CH  
 Acq On : 18 Oct 2018 18:33  
 Operator : SM/SJ  
 Sample : AR1268ICC500  
 Misc :  
 ALS Vial : 14 Sample Multiplier: 1

Instrument :  
 ECD\_O  
 ClientSampleId :  
 AR1268ICC500

Integration File signal 1: autoint1.e  
 Integration File signal 2: autoint2.e  
 Quant Time: Oct 19 01:27:58 2018  
 Quant Method : Z:\pestpcbsrv\HPCHEM1\ECD\_0\methods\PO101818.M  
 Quant Title : GC EXTRACTABLES  
 QLast Update : Fri Oct 19 01:27:36 2018  
 Response via : Initial Calibration  
 Integrator: ChemStation 6890 Scale Mode: Small noise peaks clipped

Volume Inj. : 2 µl  
 Signal #1 Phase : ZB-MR1 Signal #2 Phase: ZB-MR2  
 Signal #1 Info : 30Mx0.32mmx 0.50µ Signal #2 Info : 30M x 0.32mm x 0.25µm

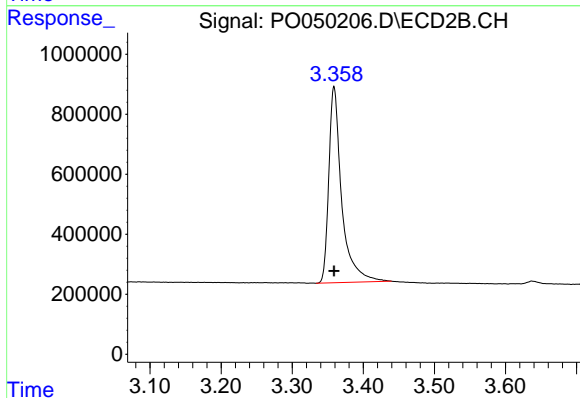




#1 Tetrachloro-m-xylene

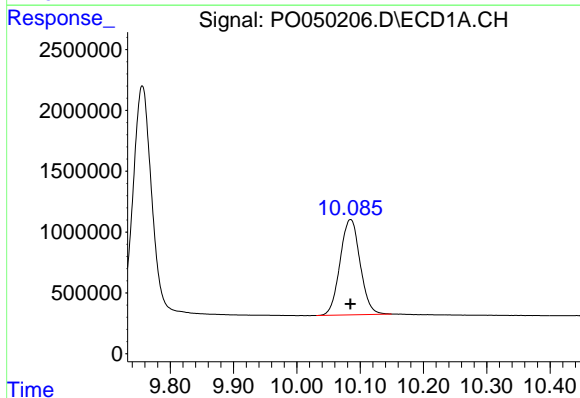
R.T.: 4.351 min  
 Delta R.T.: 0.000 min  
 Response: 12625616  
 Conc: 50.00 ng/ml

Instrument :  
 ECD\_O  
 ClientSampleId :  
 AR1268ICC500



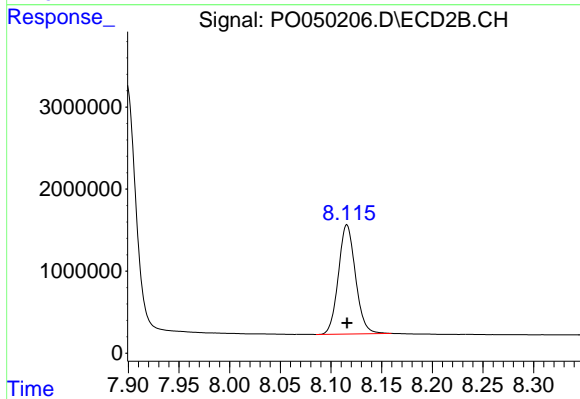
#1 Tetrachloro-m-xylene

R.T.: 3.359 min  
 Delta R.T.: 0.000 min  
 Response: 8249639  
 Conc: 50.00 ng/ml



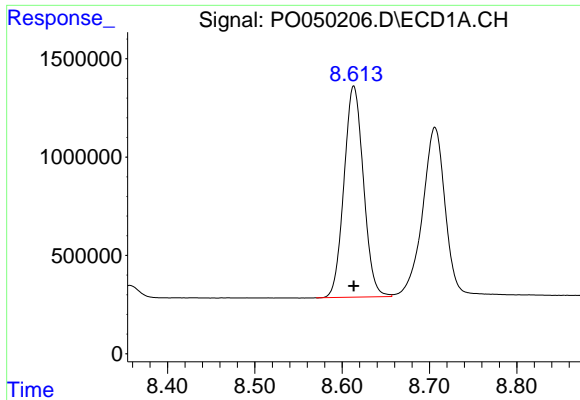
#2 Decachlorobiphenyl

R.T.: 10.085 min  
 Delta R.T.: 0.000 min  
 Response: 17265777  
 Conc: 50.00 ng/ml



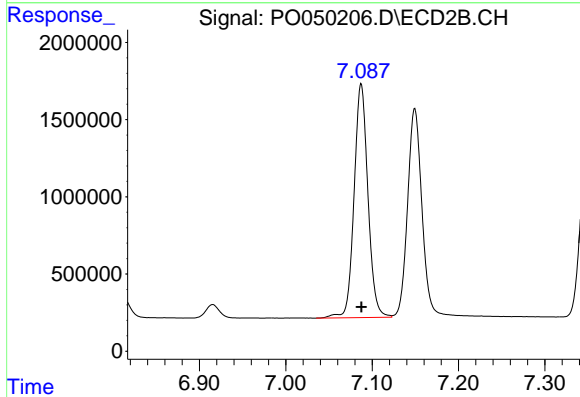
#2 Decachlorobiphenyl

R.T.: 8.116 min  
 Delta R.T.: 0.000 min  
 Response: 15656511  
 Conc: 50.00 ng/ml

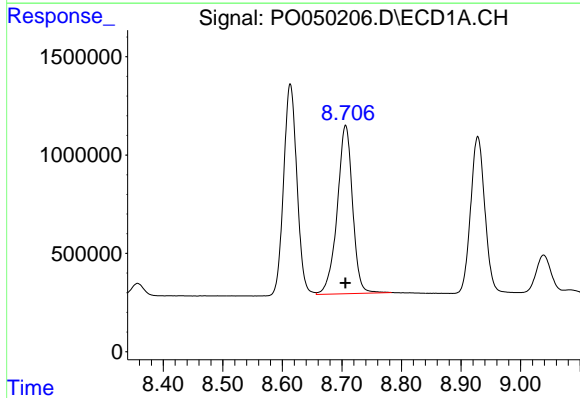


#41 AR-1268-1  
 R.T.: 8.613 min  
 Delta R.T.: 0.000 min  
 Response: 16615251  
 Conc: 500.00 ng/ml

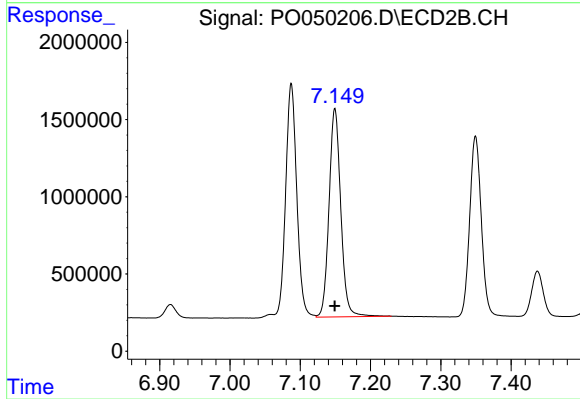
Instrument :  
 ECD\_O  
 ClientSampled :  
 AR1268ICC500



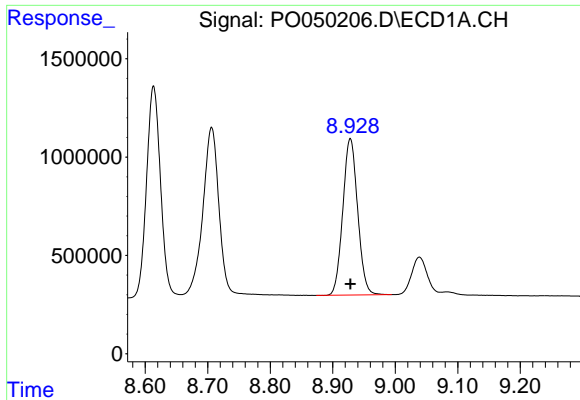
#41 AR-1268-1  
 R.T.: 7.087 min  
 Delta R.T.: 0.000 min  
 Response: 16850368  
 Conc: 500.00 ng/ml



#42 AR-1268-2  
 R.T.: 8.706 min  
 Delta R.T.: 0.000 min  
 Response: 15331033  
 Conc: 500.00 ng/ml



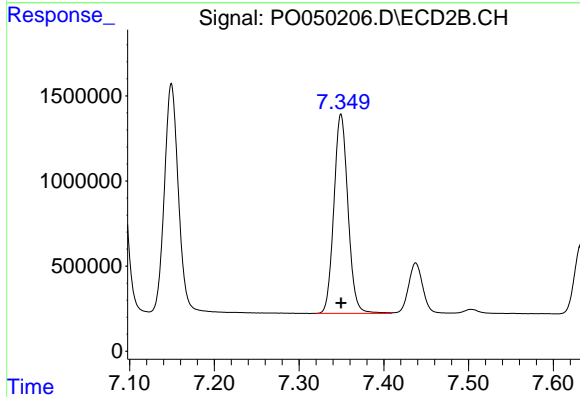
#42 AR-1268-2  
 R.T.: 7.149 min  
 Delta R.T.: 0.000 min  
 Response: 15658792  
 Conc: 500.00 ng/ml



#43 AR-1268-3

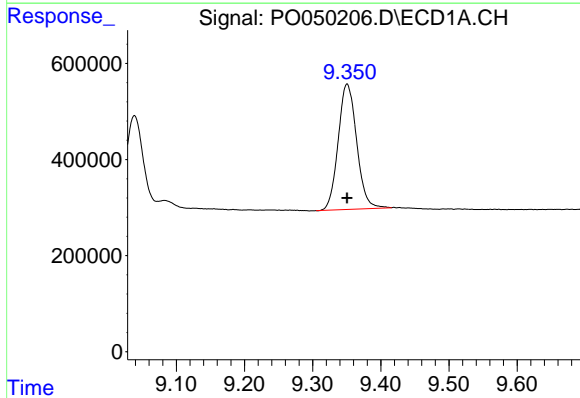
R.T.: 8.928 min  
 Delta R.T.: 0.000 min  
 Response: 13116276  
 Conc: 500.00 ng/ml

Instrument :  
 ECD\_O  
 ClientSampled :  
 AR1268ICC500



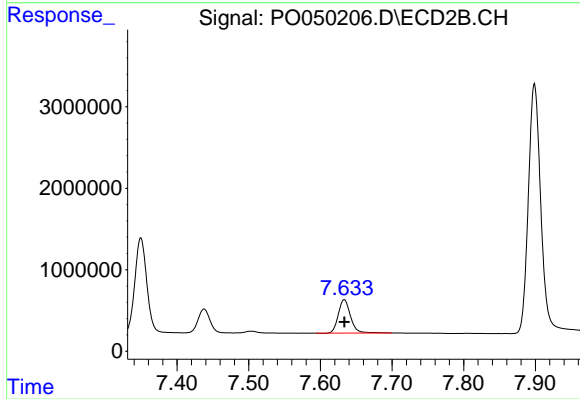
#43 AR-1268-3

R.T.: 7.349 min  
 Delta R.T.: 0.000 min  
 Response: 13515074  
 Conc: 500.00 ng/ml



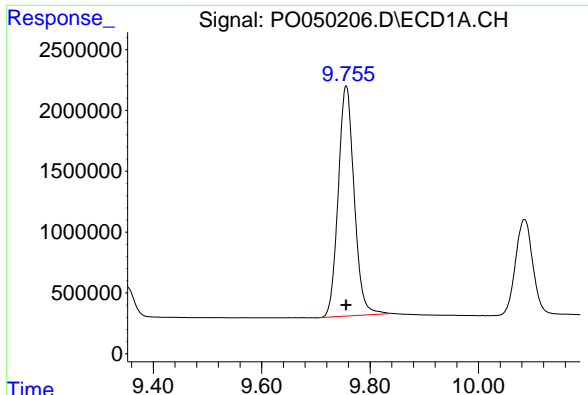
#44 AR-1268-4

R.T.: 9.351 min  
 Delta R.T.: 0.000 min  
 Response: 4928983  
 Conc: 500.00 ng/ml



#44 AR-1268-4

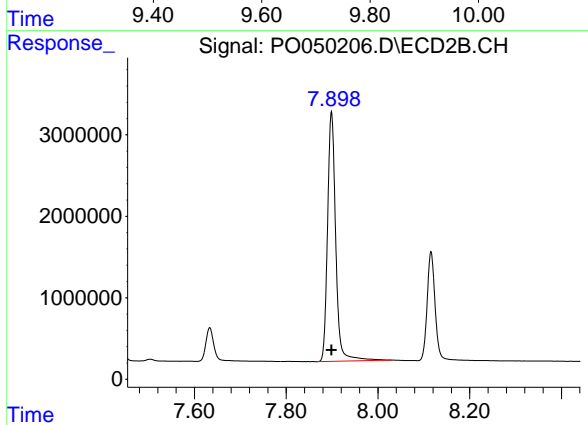
R.T.: 7.633 min  
 Delta R.T.: 0.000 min  
 Response: 4877623  
 Conc: 500.00 ng/ml



#45 AR-1268-5

R.T.: 9.756 min  
Delta R.T.: 0.000 min  
Response: 38603430  
Conc: 500.00 ng/ml

Instrument :  
ECD\_O  
ClientSampleId :  
AR1268ICC500



#45 AR-1268-5

R.T.: 7.899 min  
Delta R.T.: 0.000 min  
Response: 37902351  
Conc: 500.00 ng/ml