

Data Path : Z:\pestpcbsrv\HPCHEM1\ECD_0\Data\PO101821\
 Data File : PO082092.D
 Signal(s) : Signal #1: ECD1A.CH Signal #2: ECD2B.CH
 Acq On : 18 Oct 2021 22:26
 Operator : AJ\MA
 Sample : AR1254ICC050
 Misc :
 ALS Vial : 24 Sample Multiplier: 1

Instrument :
 ECD_0
 ClientSampleId :
 AR1254ICC050

Integration File signal 1: autoint1.e
 Integration File signal 2: autoint2.e
 Quant Time: Oct 19 04:20:53 2021
 Quant Method : Z:\pestpcbsrv\HPCHEM1\ECD_0\methods\PO101821.M
 Quant Title : GC EXTRACTABLES
 QLast Update : Tue Oct 19 04:10:19 2021
 Response via : Initial Calibration
 Integrator: ChemStation 6890 Scale Mode: Small noise peaks clipped

Volume Inj. : 2 µl
 Signal #1 Phase : ZB-MR1 Signal #2 Phase: ZB-MR2
 Signal #1 Info : 30Mx0.32mmx 0.50µ Signal #2 Info : 30M x 0.32mm x 0.25µm

Compound	RT#1	RT#2	Resp#1	Resp#2	ng/ml	ng/ml

System Monitoring Compounds						
1) SA Tetrachlo...	4.980	3.975	377481	159536	4.744	5.210
2) SA Decachlor...	11.100	9.304	263551	150188	4.794	5.412
Target Compounds						
26) L6 AR-1254-1	7.231	6.112	68777	87646	28.563	52.629 #
27) L6 AR-1254-2	7.463	6.273	187500	80373	51.403	53.834
28) L6 AR-1254-3	7.847	6.694	173973	115434	48.074	51.549
29) L6 AR-1254-4	8.146	6.936	112527	71332	42.154	48.568
30) L6 AR-1254-5	8.578	7.366	130871	101203	45.294	49.144

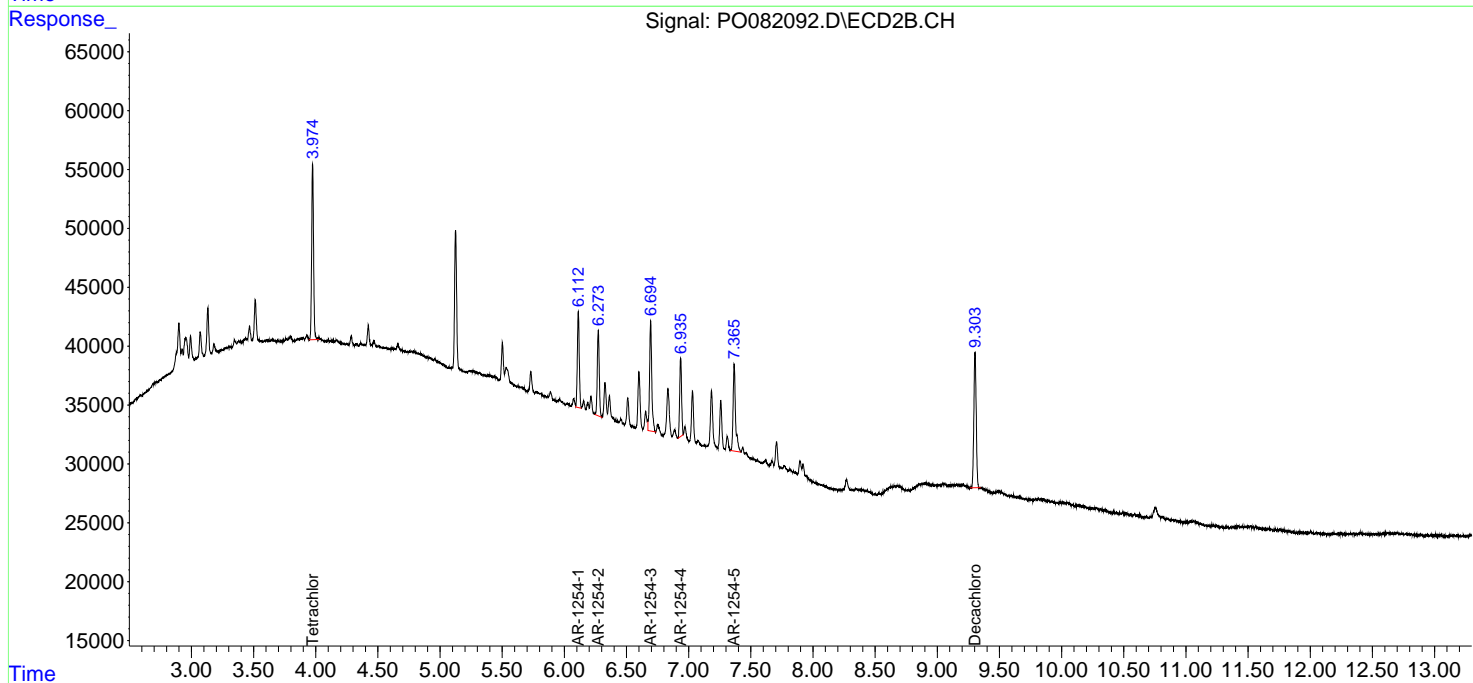
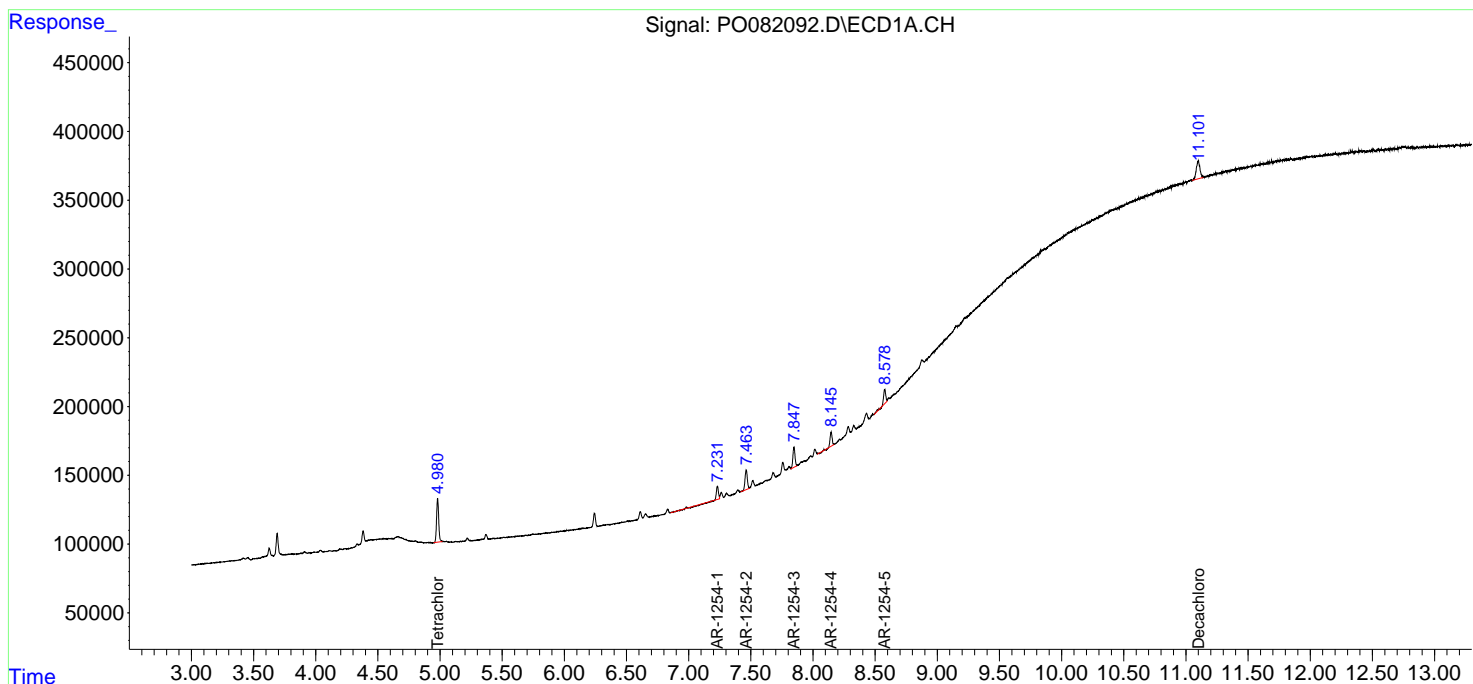
(f)=RT Delta > 1/2 Window (#)=Amounts differ by > 25% (m)=manual int.

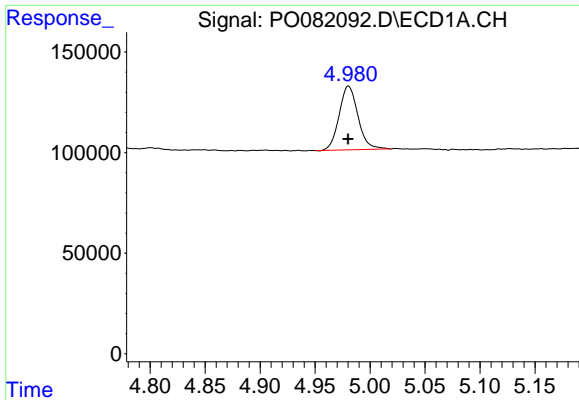
Data Path : Z:\pestpcbsrv\HPCHEM1\ECD_O\Data\PO101821\
 Data File : PO082092.D
 Signal(s) : Signal #1: ECD1A.CH Signal #2: ECD2B.CH
 Acq On : 18 Oct 2021 22:26
 Operator : AJ\MA
 Sample : AR1254IC050
 Misc :
 ALS Vial : 24 Sample Multiplier: 1

Instrument :
 ECD_O
 ClientSampleId :
 AR1254IC050

Integration File signal 1: autoint1.e
 Integration File signal 2: autoint2.e
 Quant Time: Oct 19 04:20:53 2021
 Quant Method : Z:\pestpcbsrv\HPCHEM1\ECD_O\methods\PO101821.M
 Quant Title : GC EXTRACTABLES
 QLast Update : Tue Oct 19 04:10:19 2021
 Response via : Initial Calibration
 Integrator: ChemStation 6890 Scale Mode: Small noise peaks clipped

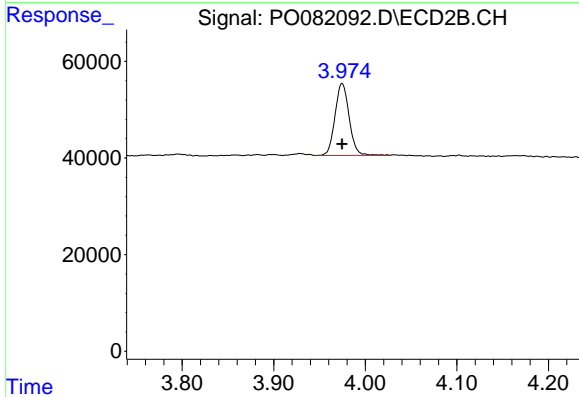
Volume Inj. : 2 µl
 Signal #1 Phase : ZB-MR1 Signal #2 Phase: ZB-MR2
 Signal #1 Info : 30Mx0.32mmx 0.50µ Signal #2 Info : 30M x 0.32mm x 0.25µm



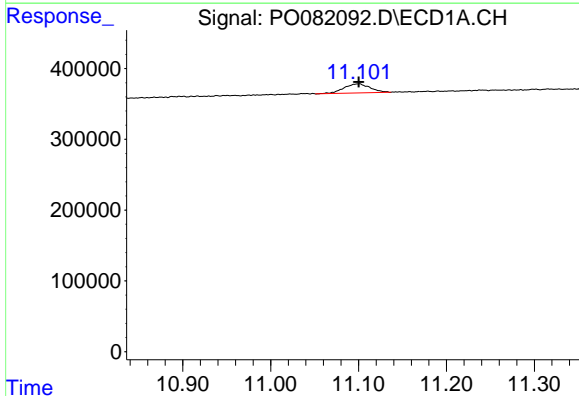


#1 Tetrachloro-m-xylene
 R.T.: 4.980 min
 Delta R.T.: 0.000 min
 Response: 377481
 Conc: 4.74 ng/ml

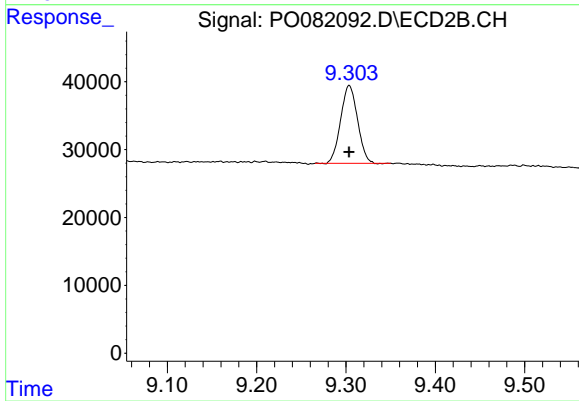
Instrument :
 ECD_O
 ClientSampleId :
 AR1254IC050



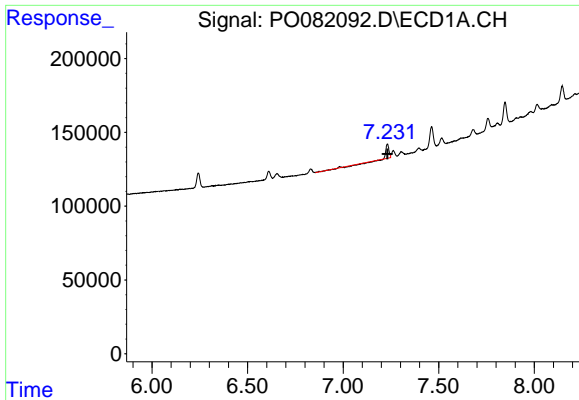
#1 Tetrachloro-m-xylene
 R.T.: 3.975 min
 Delta R.T.: 0.000 min
 Response: 159536
 Conc: 5.21 ng/ml



#2 Decachlorobiphenyl
 R.T.: 11.100 min
 Delta R.T.: 0.000 min
 Response: 263551
 Conc: 4.79 ng/ml



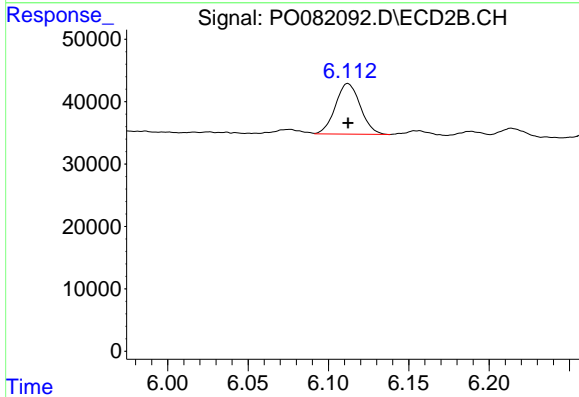
#2 Decachlorobiphenyl
 R.T.: 9.304 min
 Delta R.T.: 0.000 min
 Response: 150188
 Conc: 5.41 ng/ml



#26 AR-1254-1

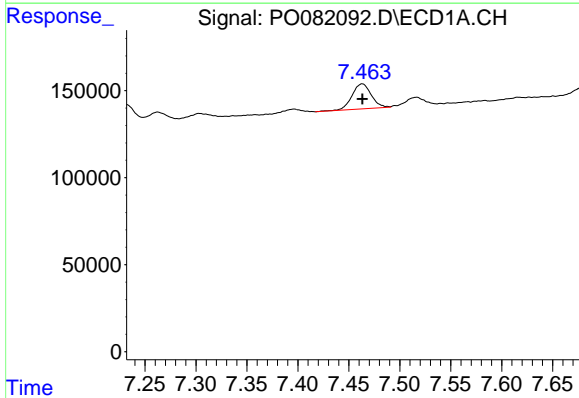
R.T.: 7.231 min
 Delta R.T.: 0.000 min
 Response: 68777
 Conc: 28.56 ng/ml

Instrument :
 ECD_O
 ClientSampleId :
 AR1254IC050



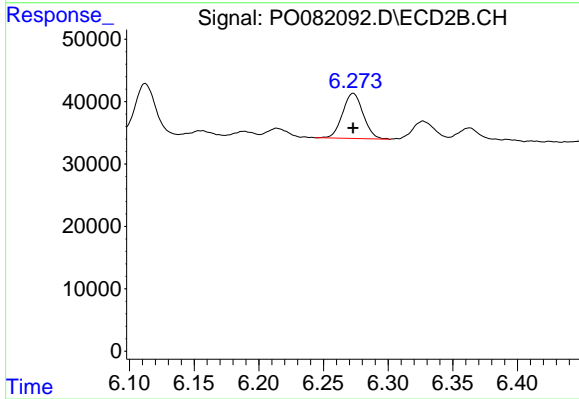
#26 AR-1254-1

R.T.: 6.112 min
 Delta R.T.: 0.000 min
 Response: 87646
 Conc: 52.63 ng/ml



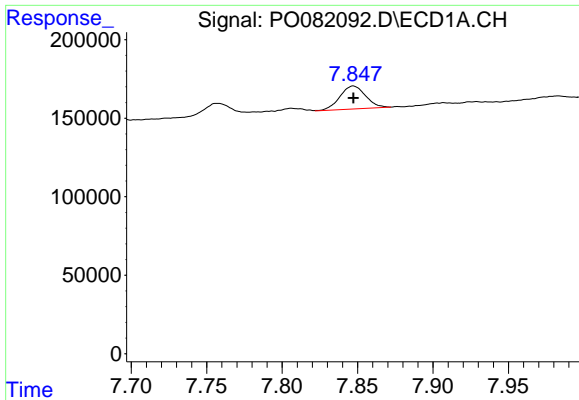
#27 AR-1254-2

R.T.: 7.463 min
 Delta R.T.: 0.000 min
 Response: 187500
 Conc: 51.40 ng/ml



#27 AR-1254-2

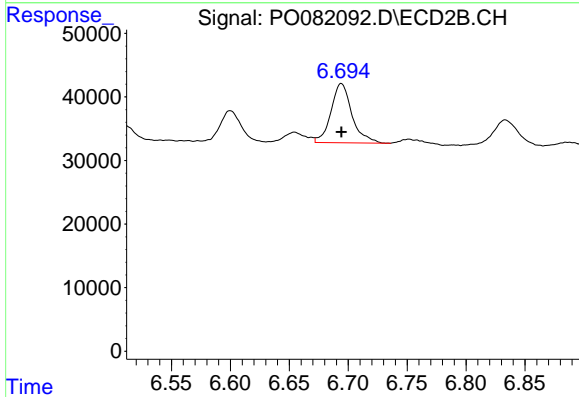
R.T.: 6.273 min
 Delta R.T.: 0.000 min
 Response: 80373
 Conc: 53.83 ng/ml



#28 AR-1254-3

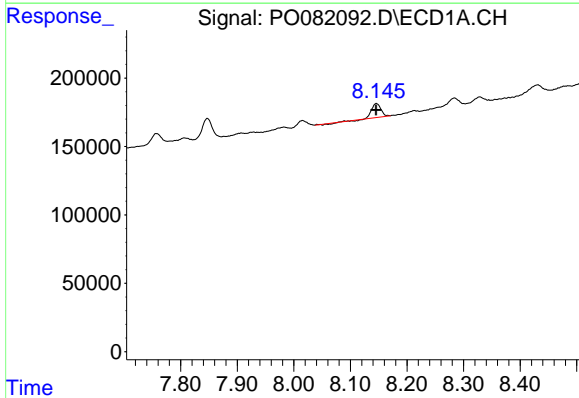
R.T.: 7.847 min
 Delta R.T.: 0.000 min
 Response: 173973
 Conc: 48.07 ng/ml

Instrument :
 ECD_O
 ClientSampleId :
 AR1254ICC050



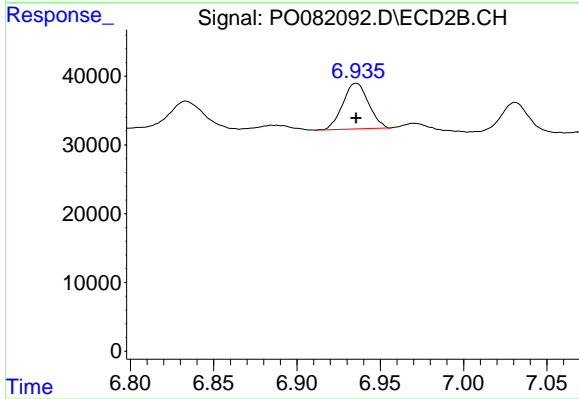
#28 AR-1254-3

R.T.: 6.694 min
 Delta R.T.: 0.000 min
 Response: 115434
 Conc: 51.55 ng/ml



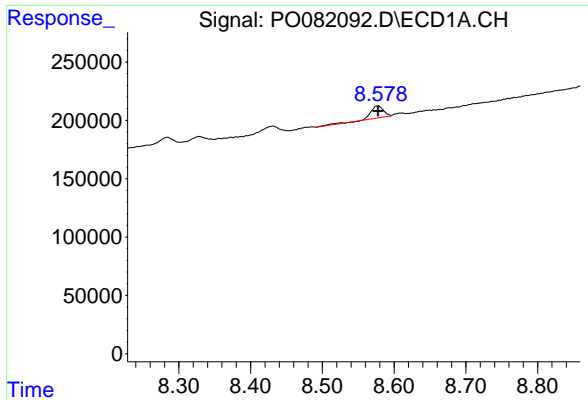
#29 AR-1254-4

R.T.: 8.146 min
 Delta R.T.: 0.000 min
 Response: 112527
 Conc: 42.15 ng/ml



#29 AR-1254-4

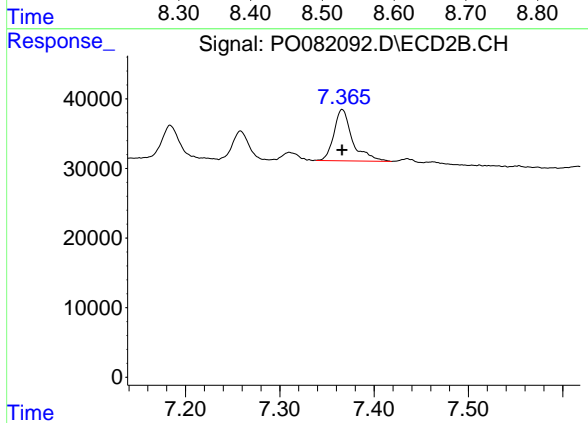
R.T.: 6.936 min
 Delta R.T.: 0.000 min
 Response: 71332
 Conc: 48.57 ng/ml



#30 AR-1254-5

R.T.: 8.578 min
 Delta R.T.: 0.000 min
 Response: 130871
 Conc: 45.29 ng/ml

Instrument :
 ECD_O
 ClientSampleId :
 AR1254IC050



#30 AR-1254-5

R.T.: 7.366 min
 Delta R.T.: 0.000 min
 Response: 101203
 Conc: 49.14 ng/ml