

Data Path : Z:\pestpcbsrv\HPCHEM1\ECD\_0\Data\PO101821\  
 Data File : PO082074.D  
 Signal(s) : Signal #1: ECD1A.CH Signal #2: ECD2B.CH  
 Acq On : 18 Oct 2021 17:16  
 Operator : AJ\MA  
 Sample : AR1660ICC250  
 Misc :  
 ALS Vial : 6 Sample Multiplier: 1

Instrument :  
 ECD\_0  
 ClientSampleId :  
 AR1660ICC250

Integration File signal 1: autoint1.e  
 Integration File signal 2: autoint2.e  
 Quant Time: Oct 19 02:47:23 2021  
 Quant Method : Z:\pestpcbsrv\HPCHEM1\ECD\_0\methods\PO101821.M  
 Quant Title : GC EXTRACTABLES  
 QLast Update : Tue Oct 19 02:26:32 2021  
 Response via : Initial Calibration  
 Integrator: ChemStation 6890 Scale Mode: Small noise peaks clipped

Volume Inj. : 2 µl  
 Signal #1 Phase : ZB-MR1 Signal #2 Phase: ZB-MR2  
 Signal #1 Info : 30Mx0.32mmx 0.50µ Signal #2 Info : 30M x 0.32mm x 0.25µm

Compound	RT#1	RT#2	Resp#1	Resp#2	ng/ml	ng/ml
-----						
System Monitoring Compounds						
1) SA Tetrachlo...	4.982	3.976	2072499	761911	25.328	26.127
2) SA Decachlor...	11.099	9.307	1432842	701776	25.293	26.722
Target Compounds						
3) L1 AR-1016-1	6.315	5.239	651806	321083	256.212	274.783
4) L1 AR-1016-2	6.339	5.260	939433	435051	257.697	272.467
5) L1 AR-1016-3	6.406	5.451	553673	235963	254.848	270.626
6) L1 AR-1016-4	6.514	5.504	446327	197215	255.474	272.999
7) L1 AR-1016-5	6.832	5.733	443380	242183	258.728	270.876
31) L7 AR-1260-1	8.017	6.835	724147	440097	253.543	274.562
32) L7 AR-1260-2	8.284	7.034	872969	532754	256.849	270.312
33) L7 AR-1260-3	8.653	7.189	570788	493990	251.669	273.710
34) L7 AR-1260-4	8.885	7.674	689982	374369	251.240	272.854
35) L7 AR-1260-5	9.220	7.923	1411609	847431	253.130	260.404

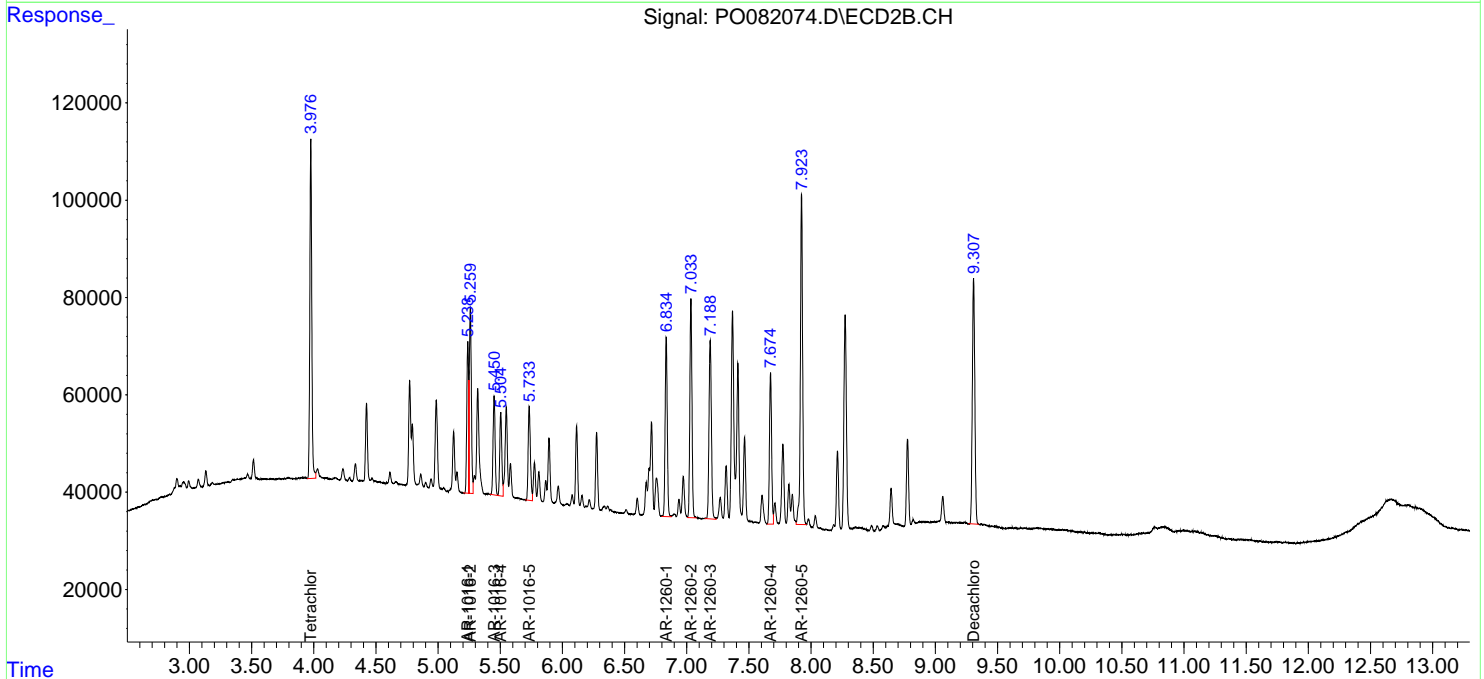
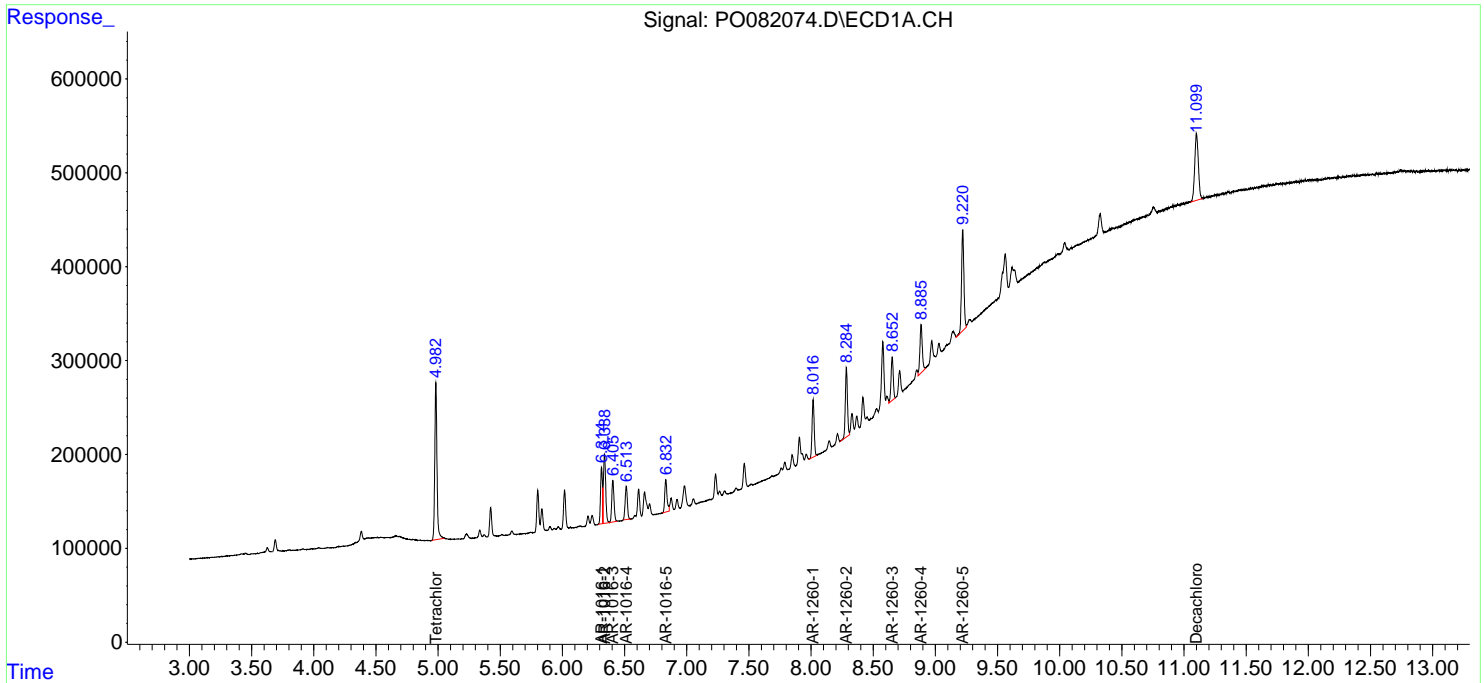
(f)=RT Delta > 1/2 Window (#)=Amounts differ by > 25% (m)=manual int.

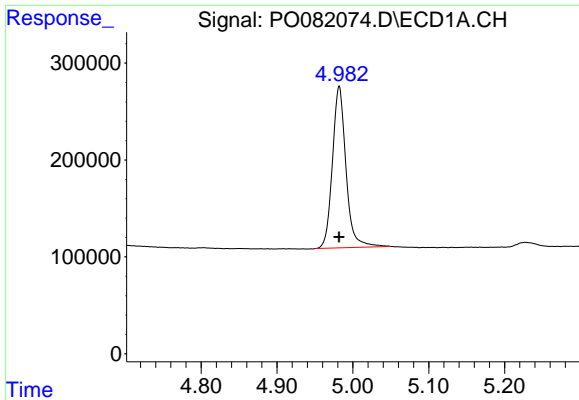
Data Path : Z:\pestpcbsrv\HPCHEM1\ECD\_O\Data\PO101821\  
 Data File : PO082074.D  
 Signal(s) : Signal #1: ECD1A.CH Signal #2: ECD2B.CH  
 Acq On : 18 Oct 2021 17:16  
 Operator : AJ\MA  
 Sample : AR1660ICC250  
 Misc :  
 ALS Vial : 6 Sample Multiplier: 1

Instrument :  
 ECD\_O  
 ClientSampleId :  
 AR1660ICC250

Integration File signal 1: autoint1.e  
 Integration File signal 2: autoint2.e  
 Quant Time: Oct 19 02:47:23 2021  
 Quant Method : Z:\pestpcbsrv\HPCHEM1\ECD\_O\methods\PO101821.M  
 Quant Title : GC EXTRACTABLES  
 QLast Update : Tue Oct 19 02:26:32 2021  
 Response via : Initial Calibration  
 Integrator: ChemStation 6890 Scale Mode: Small noise peaks clipped

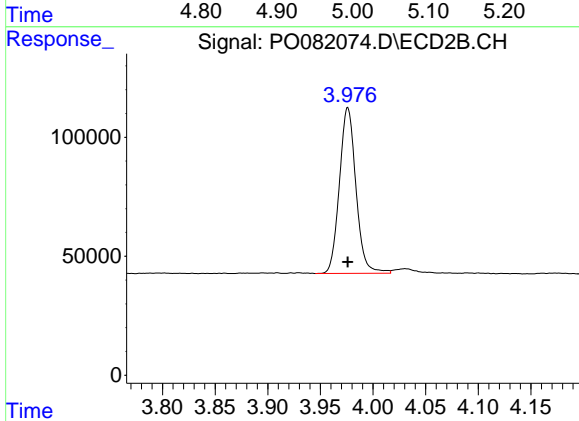
Volume Inj. : 2 µl  
 Signal #1 Phase : ZB-MR1 Signal #2 Phase: ZB-MR2  
 Signal #1 Info : 30Mx0.32mmx 0.50µ Signal #2 Info : 30M x 0.32mm x 0.25µm



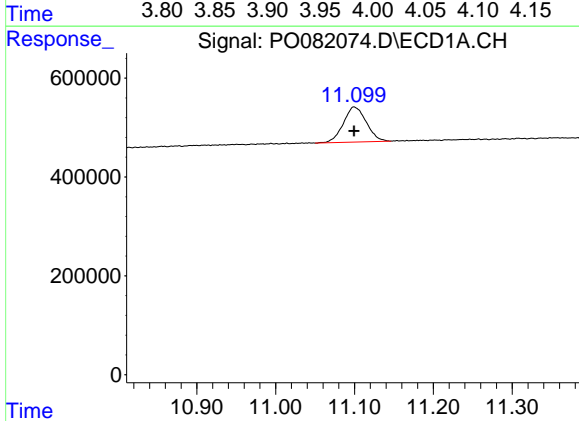


#1 Tetrachloro-m-xylene  
 R.T.: 4.982 min  
 Delta R.T.: 0.000 min  
 Response: 2072499  
 Conc: 25.33 ng/ml

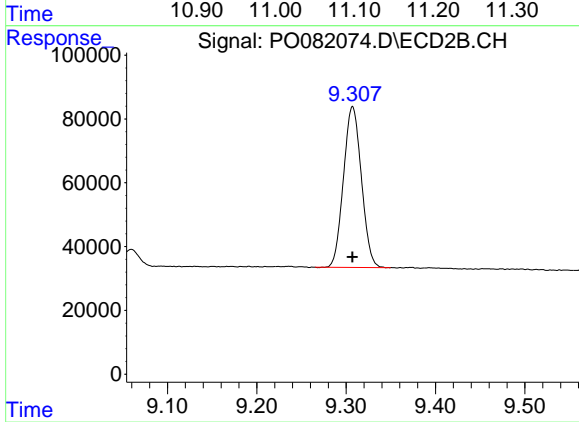
Instrument :  
 ECD\_O  
 ClientSampleId :  
 AR1660ICC250



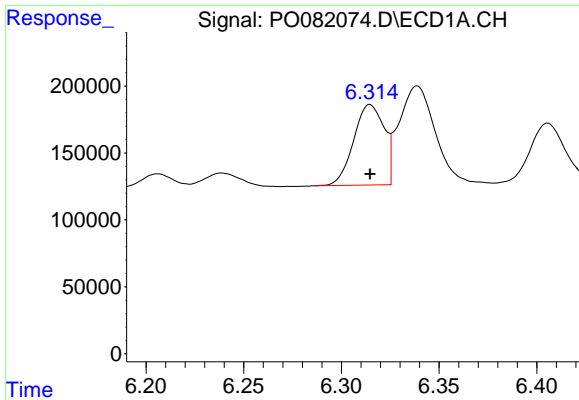
#1 Tetrachloro-m-xylene  
 R.T.: 3.976 min  
 Delta R.T.: 0.000 min  
 Response: 761911  
 Conc: 26.13 ng/ml



#2 Decachlorobiphenyl  
 R.T.: 11.099 min  
 Delta R.T.: 0.000 min  
 Response: 1432842  
 Conc: 25.29 ng/ml



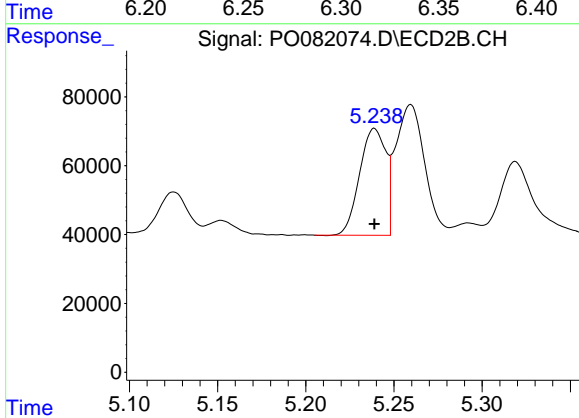
#2 Decachlorobiphenyl  
 R.T.: 9.307 min  
 Delta R.T.: 0.000 min  
 Response: 701776  
 Conc: 26.72 ng/ml



#3 AR-1016-1

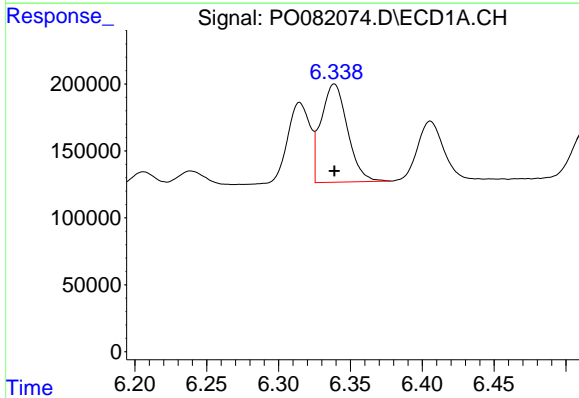
R.T.: 6.315 min  
 Delta R.T.: 0.000 min  
 Response: 651806  
 Conc: 256.21 ng/ml

Instrument :  
 ECD\_O  
 ClientSampleId :  
 AR1660ICC250



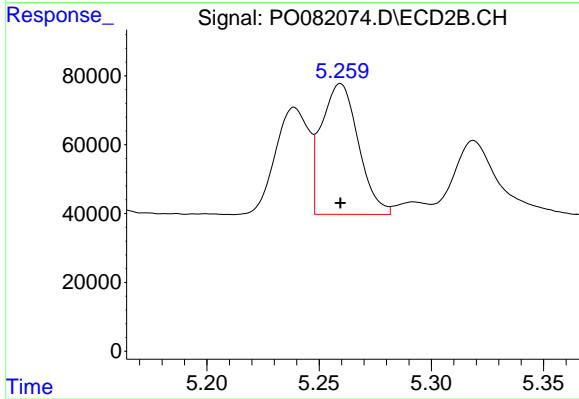
#3 AR-1016-1

R.T.: 5.239 min  
 Delta R.T.: 0.000 min  
 Response: 321083  
 Conc: 274.78 ng/ml



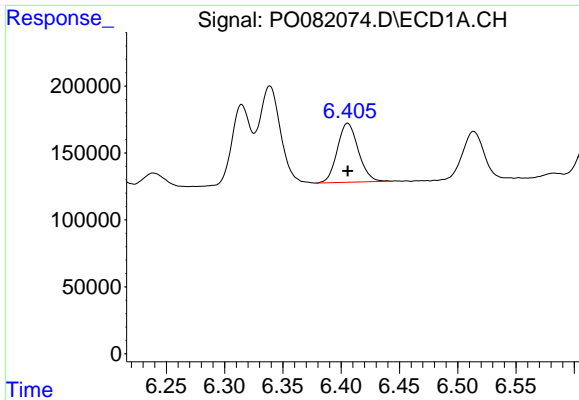
#4 AR-1016-2

R.T.: 6.339 min  
 Delta R.T.: 0.000 min  
 Response: 939433  
 Conc: 257.70 ng/ml



#4 AR-1016-2

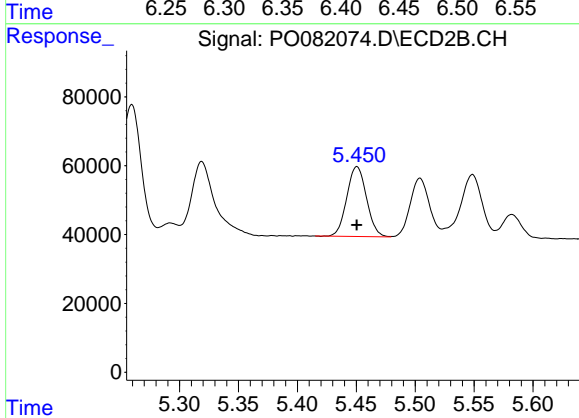
R.T.: 5.260 min  
 Delta R.T.: 0.000 min  
 Response: 435051  
 Conc: 272.47 ng/ml



#5 AR-1016-3

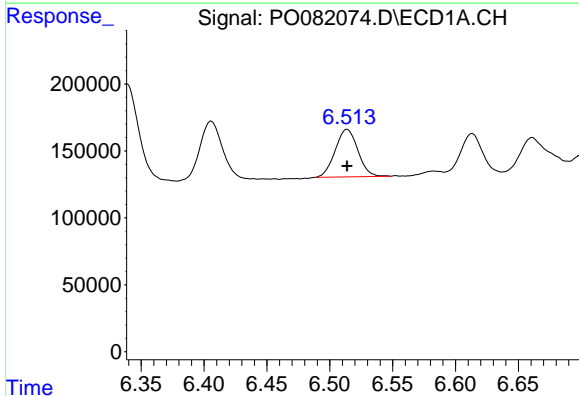
R.T.: 6.406 min  
 Delta R.T.: 0.000 min  
 Response: 553673  
 Conc: 254.85 ng/ml

Instrument :  
 ECD\_O  
 ClientSampleId :  
 AR1660ICC250



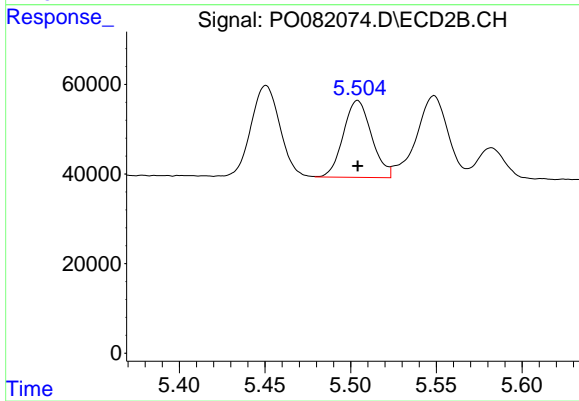
#5 AR-1016-3

R.T.: 5.451 min  
 Delta R.T.: 0.000 min  
 Response: 235963  
 Conc: 270.63 ng/ml



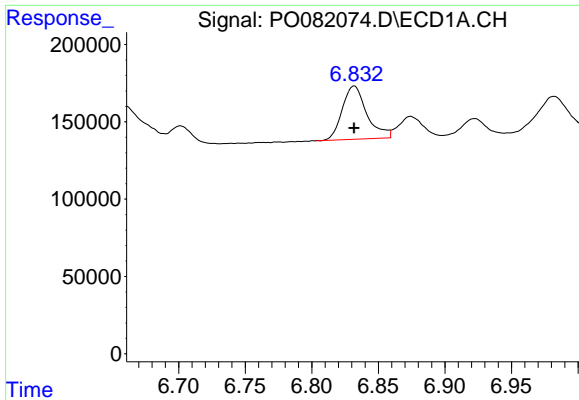
#6 AR-1016-4

R.T.: 6.514 min  
 Delta R.T.: 0.000 min  
 Response: 446327  
 Conc: 255.47 ng/ml



#6 AR-1016-4

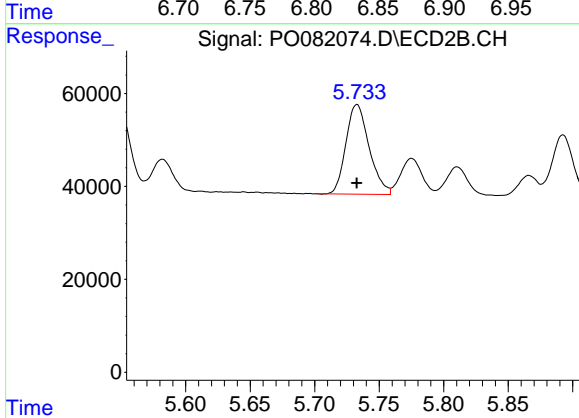
R.T.: 5.504 min  
 Delta R.T.: 0.000 min  
 Response: 197215  
 Conc: 273.00 ng/ml



#7 AR-1016-5

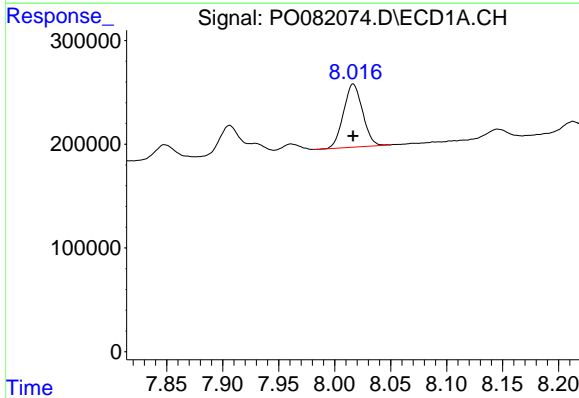
R.T.: 6.832 min  
 Delta R.T.: 0.000 min  
 Response: 443380  
 Conc: 258.73 ng/ml

Instrument :  
 ECD\_O  
 ClientSampleId :  
 AR1660ICC250



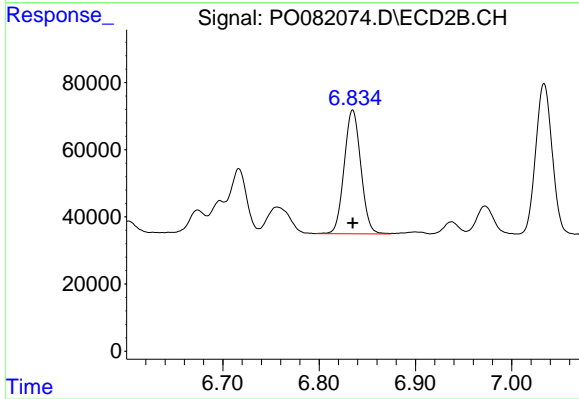
#7 AR-1016-5

R.T.: 5.733 min  
 Delta R.T.: 0.000 min  
 Response: 242183  
 Conc: 270.88 ng/ml



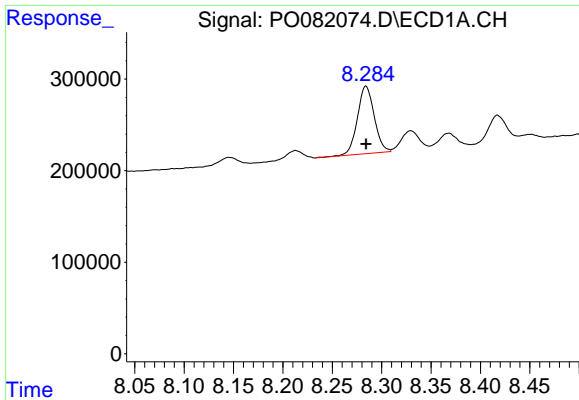
#31 AR-1260-1

R.T.: 8.017 min  
 Delta R.T.: 0.000 min  
 Response: 724147  
 Conc: 253.54 ng/ml



#31 AR-1260-1

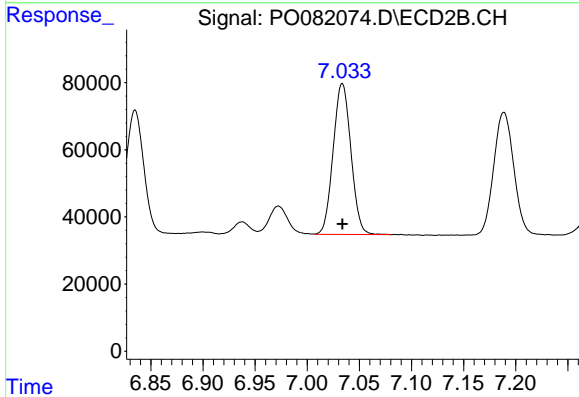
R.T.: 6.835 min  
 Delta R.T.: 0.000 min  
 Response: 440097  
 Conc: 274.56 ng/ml



#32 AR-1260-2

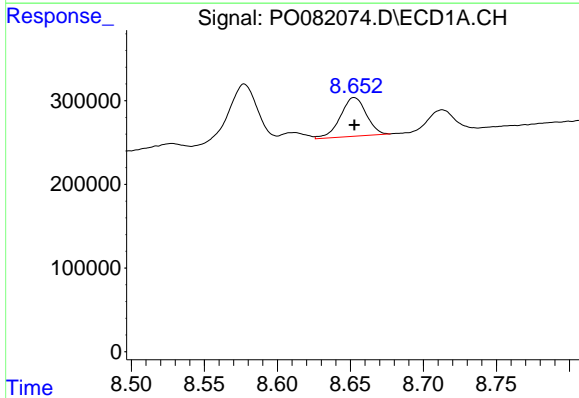
R.T.: 8.284 min  
 Delta R.T.: 0.000 min  
 Response: 872969  
 Conc: 256.85 ng/ml

Instrument :  
 ECD\_O  
 ClientSampleId :  
 AR1660ICC250



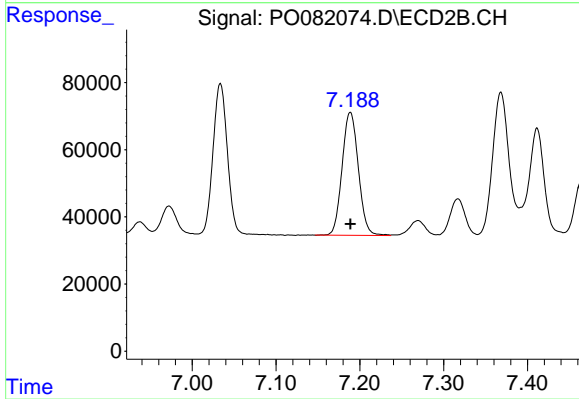
#32 AR-1260-2

R.T.: 7.034 min  
 Delta R.T.: 0.000 min  
 Response: 532754  
 Conc: 270.31 ng/ml



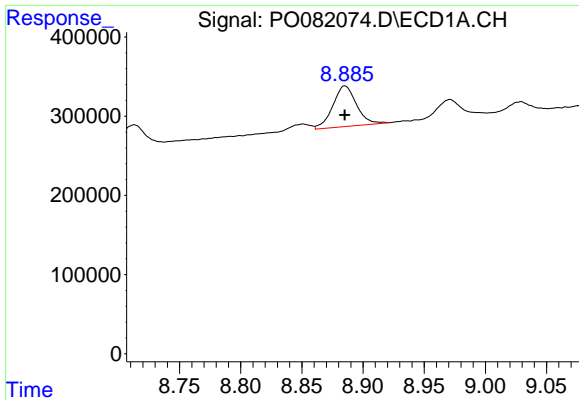
#33 AR-1260-3

R.T.: 8.653 min  
 Delta R.T.: 0.000 min  
 Response: 570788  
 Conc: 251.67 ng/ml



#33 AR-1260-3

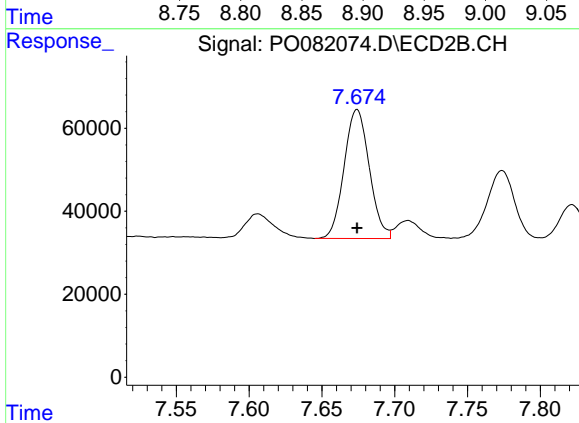
R.T.: 7.189 min  
 Delta R.T.: 0.000 min  
 Response: 493990  
 Conc: 273.71 ng/ml



#34 AR-1260-4

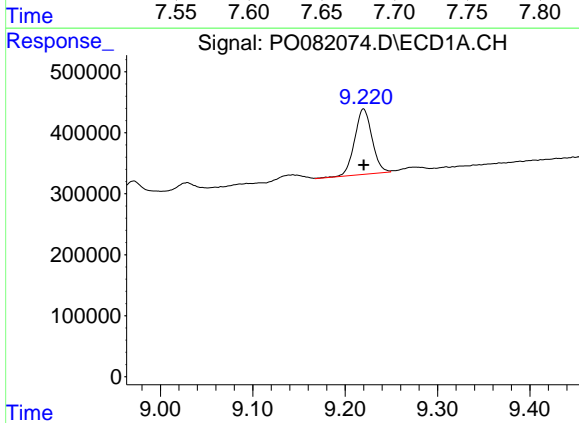
R.T.: 8.885 min  
 Delta R.T.: 0.000 min  
 Response: 689982  
 Conc: 251.24 ng/ml

Instrument :  
 ECD\_O  
 ClientSampleId :  
 AR1660ICC250



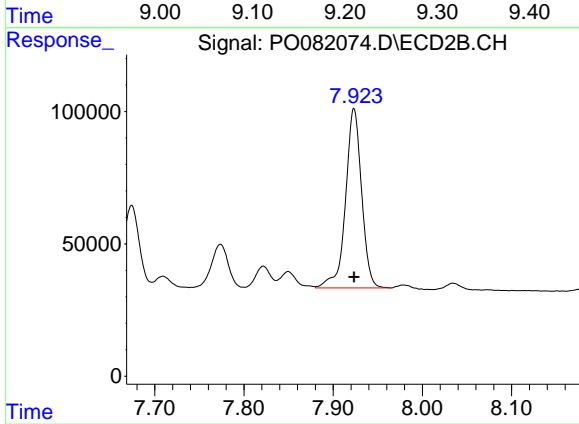
#34 AR-1260-4

R.T.: 7.674 min  
 Delta R.T.: 0.000 min  
 Response: 374369  
 Conc: 272.85 ng/ml



#35 AR-1260-5

R.T.: 9.220 min  
 Delta R.T.: 0.000 min  
 Response: 1411609  
 Conc: 253.13 ng/ml



#35 AR-1260-5

R.T.: 7.923 min  
 Delta R.T.: 0.000 min  
 Response: 847431  
 Conc: 260.40 ng/ml