

Data Path : Z:\pestpcbsrv\HPCHEM1\ECD\_O\Data\P0102119\  
 Data File : P0063042.D  
 Signal(s) : Signal #1: ECD1A.CH Signal #2: ECD2B.CH  
 Acq On : 21 Oct 2019 17:57  
 Operator : HP/AJ  
 Sample : K5447-01  
 Misc :  
 ALS Vial : 17 Sample Multiplier: 1

**Instrument :**  
 ECD\_O  
**ClientSampleId :**  
 RT5124

**Manual Integrations**  
**APPROVED**  
 Ankita  
 10/22/2019 9:23:46 AM

Integration File signal 1: autoint1.e  
 Integration File signal 2: autoint2.e  
 Quant Time: Oct 22 00:59:28 2019  
 Quant Method : Z:\pestpcbsrv\HPCHEM1\ECD\_O\methods\P0101119.M  
 Quant Title : GC EXTRACTABLES  
 QLast Update : Sat Oct 12 06:25:38 2019  
 Response via : Initial Calibration  
 Integrator: ChemStation 6890 Scale Mode: Small noise peaks clipped

Volume Inj. : 2 µl  
 Signal #1 Phase : ZB-MR1 Signal #2 Phase: ZB-MR2  
 Signal #1 Info : 30Mx0.32mmx 0.50µ Signal #2 Info : 30M x 0.32mm x 0.25µm

Compound	RT#1	RT#2	Resp#1	Resp#2	ng/ml	ng/ml
-----						
System Monitoring Compounds						
1) SA Tetrachlo...	4.316	3.477	1203968	919651	19.467	21.446
2) SA Decachlor...	9.938	8.326	951547	495859	17.006m	16.900m

Target Compounds  
 -----

(f)=RT Delta > 1/2 Window (#)=Amounts differ by > 25% (m)=manual int.

Data Path : Z:\pestpcbsrv\HPCHEM1\ECD\_O\Data\PO102119\  
 Data File : PO063042.D  
 Signal(s) : Signal #1: ECD1A.CH Signal #2: ECD2B.CH  
 Acq On : 21 Oct 2019 17:57  
 Operator : HP/AJ  
 Sample : K5447-01  
 Misc :  
 ALS Vial : 17 Sample Multiplier: 1

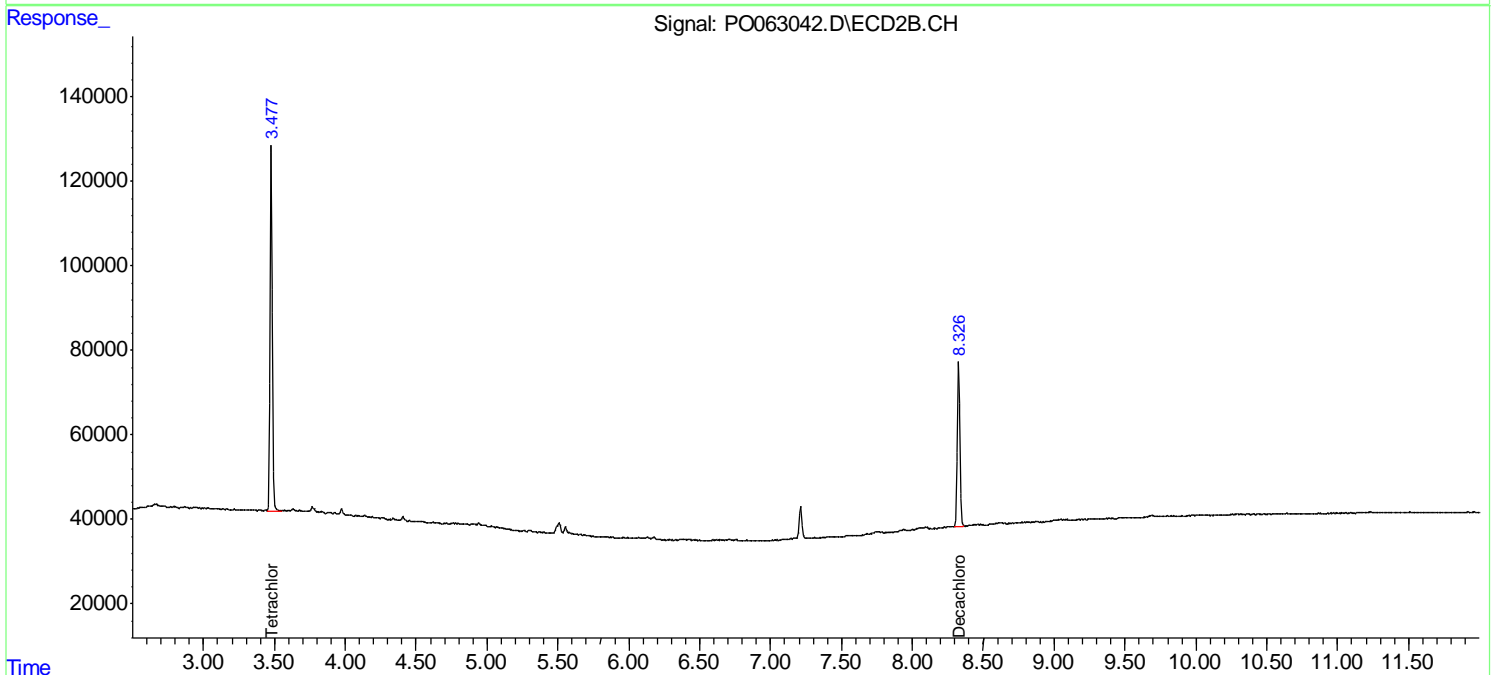
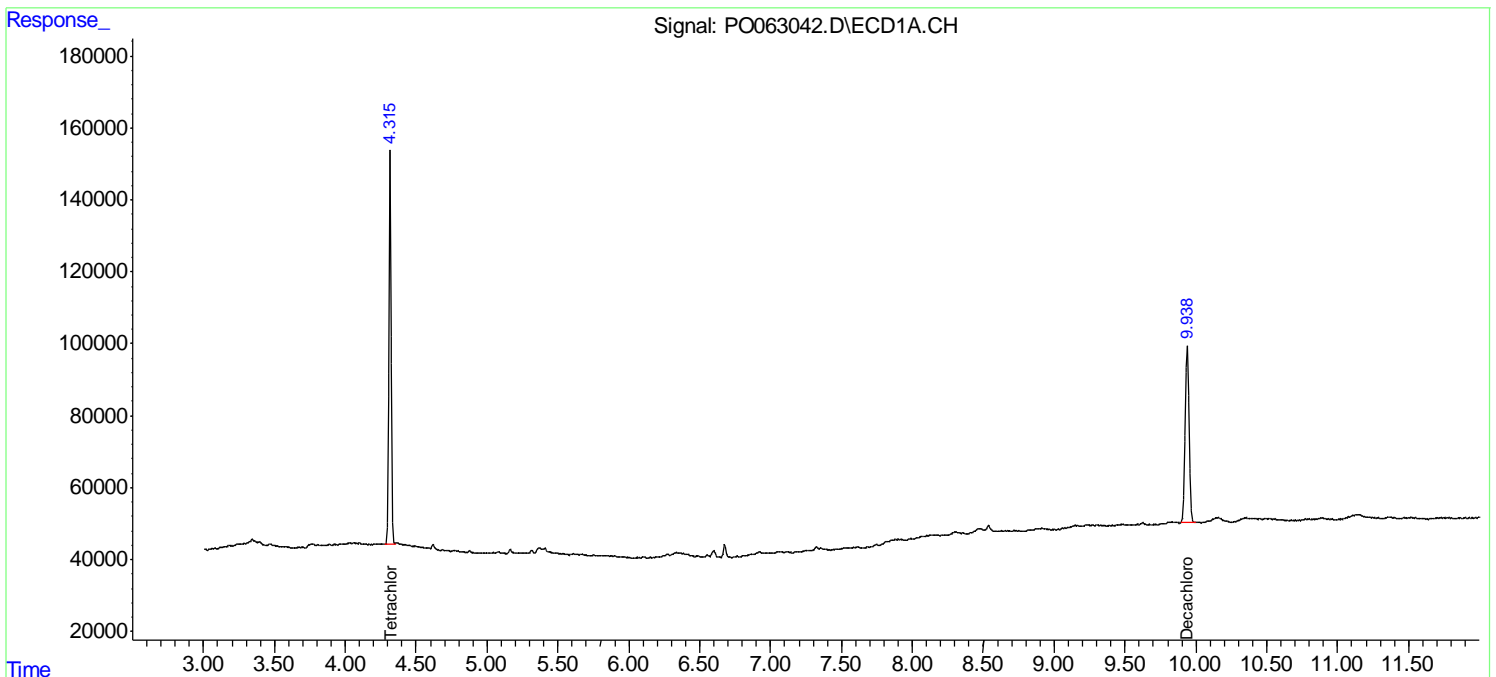
Instrument :  
 ECD\_O  
 ClientSampleId :  
 RT5124

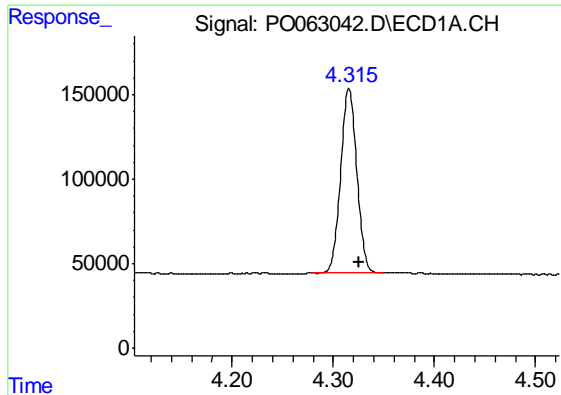
Manual Integrations  
 APPROVED

Ankita  
 10/22/2019 9:23:46 AM

Integration File signal 1: autoint1.e  
 Integration File signal 2: autoint2.e  
 Quant Time: Oct 22 00:59:28 2019  
 Quant Method : Z:\pestpcbsrv\HPCHEM1\ECD\_O\methods\PO101119.M  
 Quant Title : GC EXTRACTABLES  
 QLast Update : Sat Oct 12 06:25:38 2019  
 Response via : Initial Calibration  
 Integrator: ChemStation 6890 Scale Mode: Small noise peaks clipped

Volume Inj. : 2 µl  
 Signal #1 Phase : ZB-MR1 Signal #2 Phase: ZB-MR2  
 Signal #1 Info : 30Mx0.32mmx 0.50µ Signal #2 Info : 30M x 0.32mm x 0.25µm

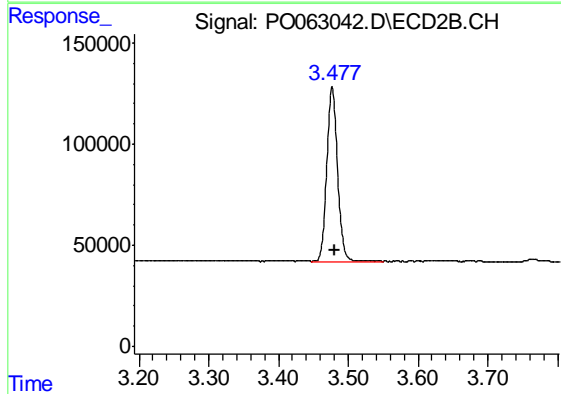




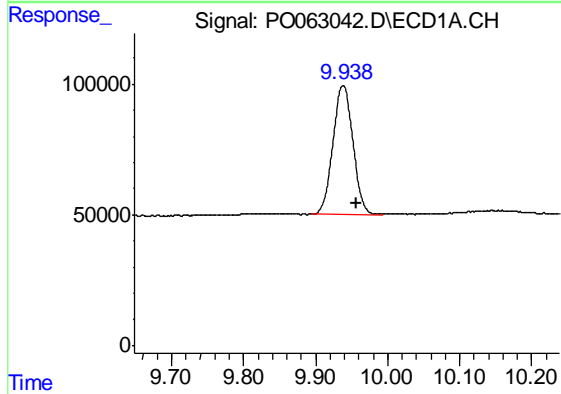
#1 Tetrachloro-m-xylene  
 R.T.: 4.316 min  
 Delta R.T.: -0.009 min  
 Response: 1203968  
 Conc: 19.47 ng/ml

Instrument :  
 ECD\_O  
 ClientSampled :  
 RT5124

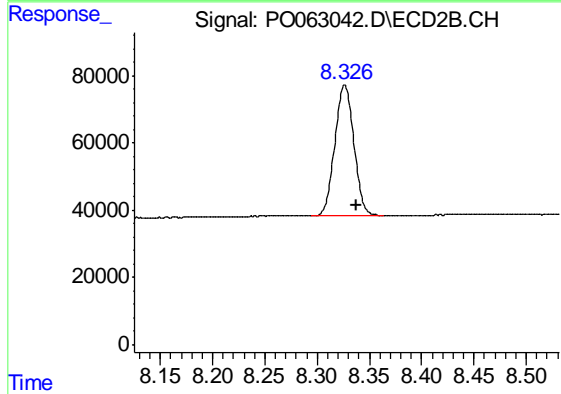
Manual Integrations  
 APPROVED  
 Ankita  
 10/22/2019 9:23:46 AM



#1 Tetrachloro-m-xylene  
 R.T.: 3.477 min  
 Delta R.T.: -0.004 min  
 Response: 919651  
 Conc: 21.45 ng/ml



#2 Decachlorobiphenyl  
 R.T.: 9.938 min  
 Delta R.T.: -0.018 min  
 Response: 951547  
 Conc: 17.01 ng/ml m



#2 Decachlorobiphenyl  
 R.T.: 8.326 min  
 Delta R.T.: -0.012 min  
 Response: 495859  
 Conc: 16.90 ng/ml m