

Data Path : Z:\pestpcbsrv\HPCHEM1\ECD\_O\Data\P0102124\  
 Data File : P0107320.D  
 Signal(s) : Signal #1: ECD1A.ch Signal #2: ECD2B.ch  
 Acq On : 21 Oct 2024 21:53  
 Operator : YP/AJ  
 Sample : P4469-01  
 Misc :  
 ALS Vial : 24 Sample Multiplier: 1

Instrument :  
 ECD\_O  
 ClientSampleId :  
 16-PIPE

Integration File signal 1: autoint1.e  
 Integration File signal 2: autoint2.e  
 Quant Time: Oct 22 07:22:45 2024  
 Quant Method : Z:\pestpcbsrv\HPCHEM1\ECD\_O\methods\P0101524.M  
 Quant Title : GC EXTRACTABLES  
 QLast Update : Wed Oct 16 04:53:16 2024  
 Response via : Initial Calibration  
 Integrator: ChemStation

Volume Inj. : 2 µl  
 Signal #1 Phase : ZB-MR1 Signal #2 Phase: ZB-MR2  
 Signal #1 Info : 30Mx0.32mmx 0.50µ Signal #2 Info : 30M x 0.32mm x 0.25µm

Compound	RT#1	RT#2	Resp#1	Resp#2	ng/ml	ng/ml
-----						
System Monitoring Compounds						
1) SA Tetrachlo...	4.373	3.645	187.7E6	67890428	20.590	21.094
2) SA Decachlor...	10.057	8.637	48406008	55937776	19.730	20.403

Target Compounds

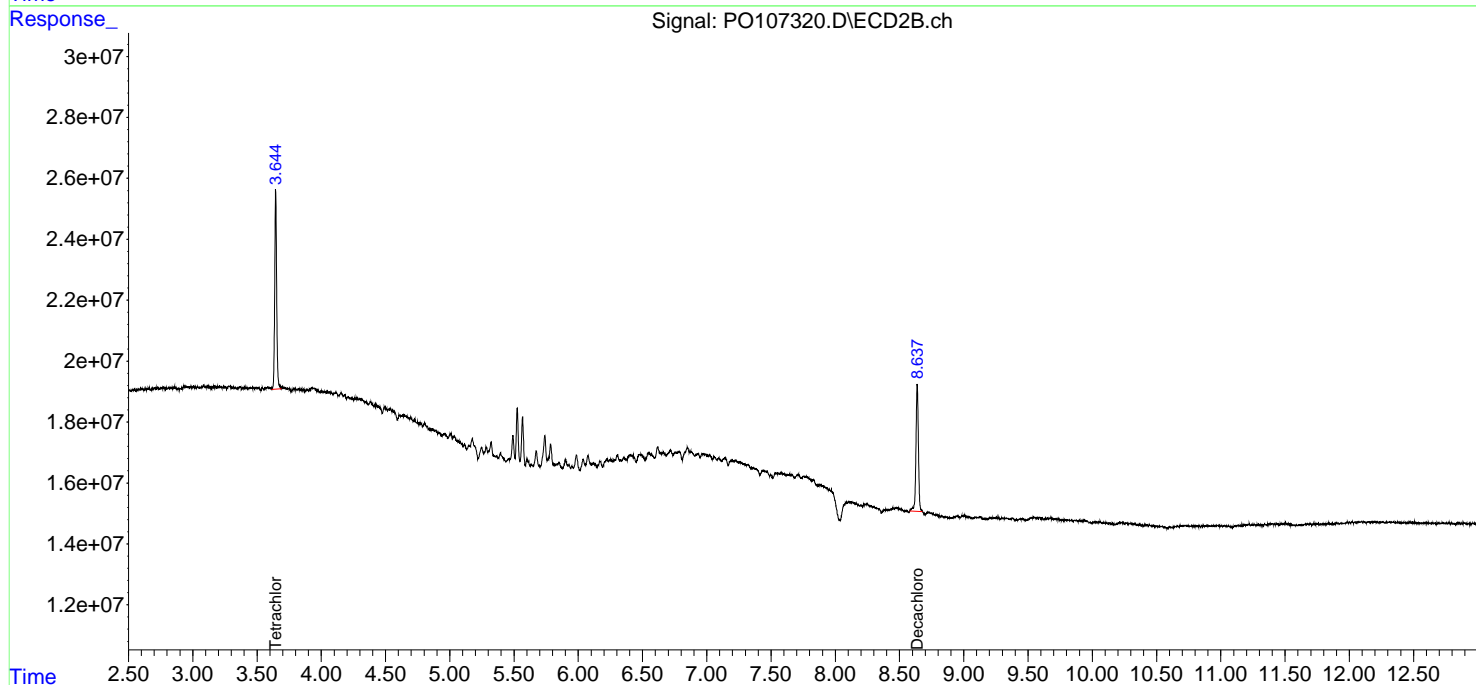
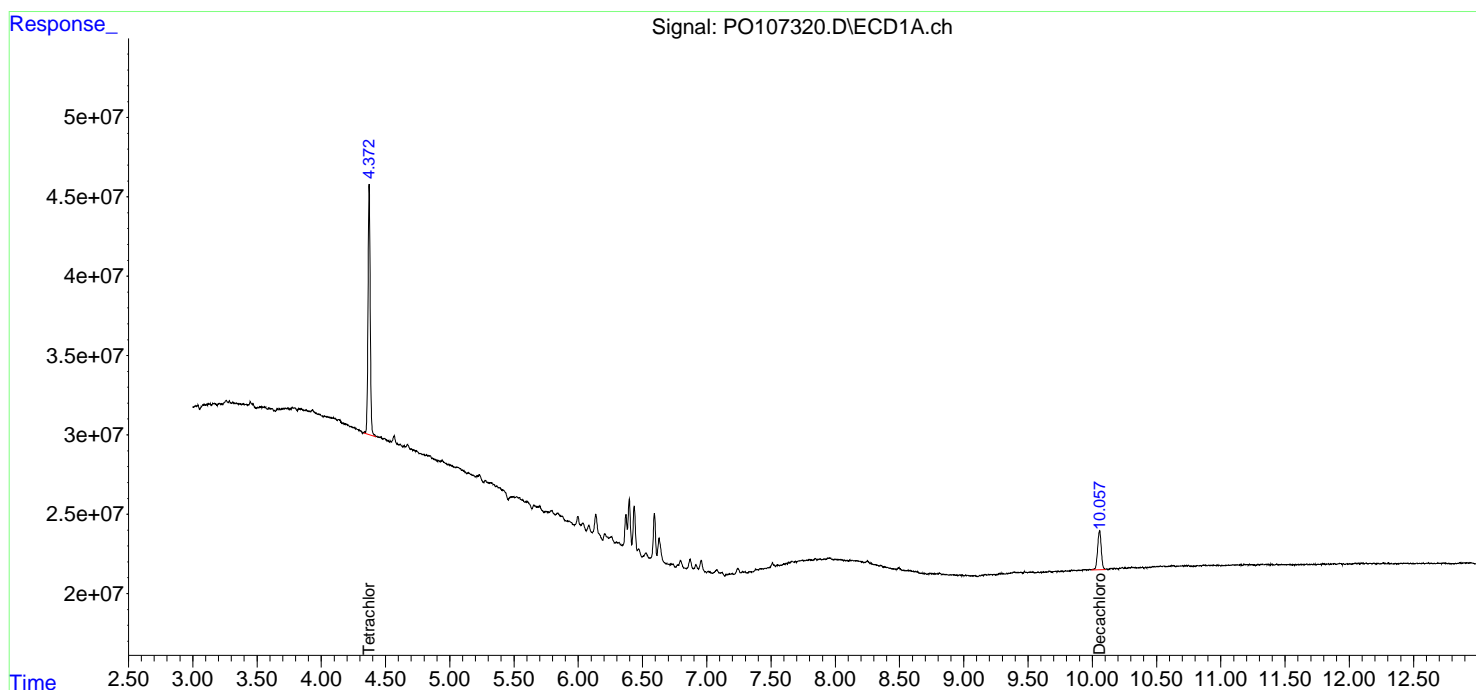
(f)=RT Delta > 1/2 Window (#)=Amounts differ by > 25% (m)=manual int.

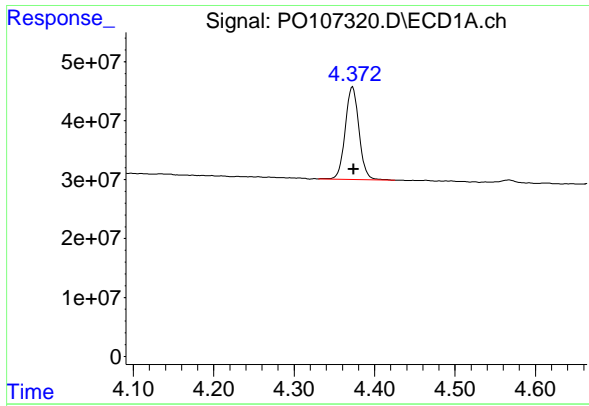
Data Path : Z:\pestpcbsrv\HPCHEM1\ECD\_O\Data\PO102124\  
 Data File : PO107320.D  
 Signal(s) : Signal #1: ECD1A.ch Signal #2: ECD2B.ch  
 Acq On : 21 Oct 2024 21:53  
 Operator : YP/AJ  
 Sample : P4469-01  
 Misc :  
 ALS Vial : 24 Sample Multiplier: 1

Instrument :  
 ECD\_O  
 ClientSampleId :  
 16-PIPE

Integration File signal 1: autoint1.e  
 Integration File signal 2: autoint2.e  
 Quant Time: Oct 22 07:22:45 2024  
 Quant Method : Z:\pestpcbsrv\HPCHEM1\ECD\_O\methods\PO101524.M  
 Quant Title : GC EXTRACTABLES  
 QLast Update : Wed Oct 16 04:53:16 2024  
 Response via : Initial Calibration  
 Integrator: ChemStation

Volume Inj. : 2 µl  
 Signal #1 Phase : ZB-MR1 Signal #2 Phase: ZB-MR2  
 Signal #1 Info : 30Mx0.32mmx 0.50µm Signal #2 Info : 30M x 0.32mm x 0.25µm

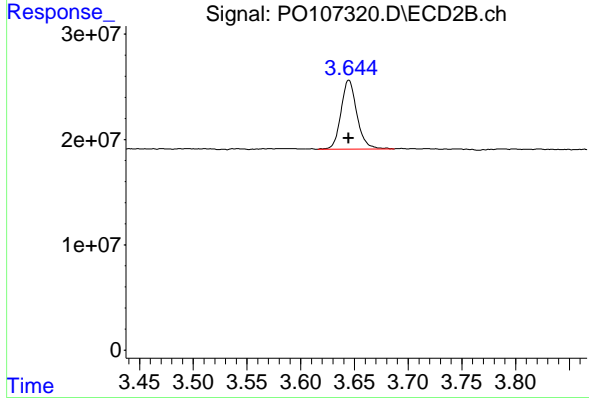




#1 Tetrachloro-m-xylene

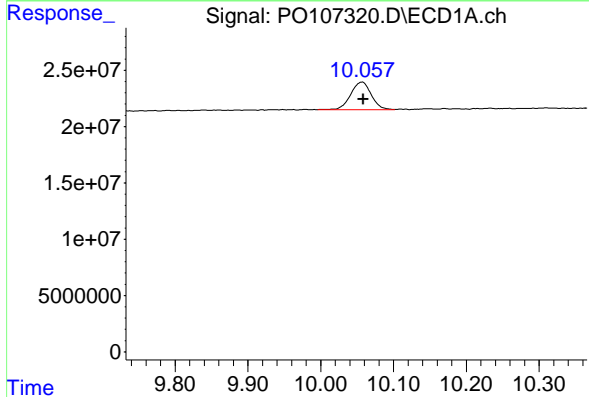
R.T.: 4.373 min  
 Delta R.T.: -0.001 min  
 Response: 187657320  
 Conc: 20.59 ng/ml

Instrument :  
 ECD\_O  
 ClientSampleId :  
 16-PIPE



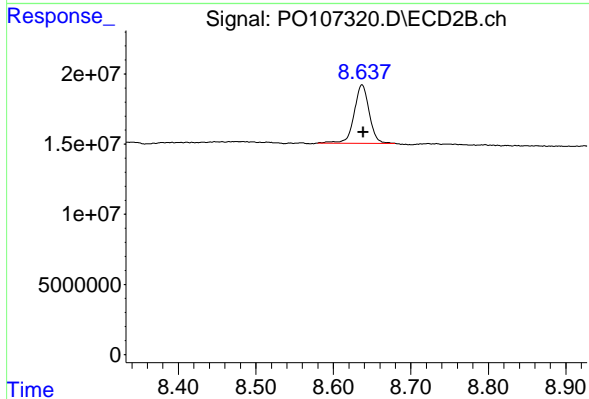
#1 Tetrachloro-m-xylene

R.T.: 3.645 min  
 Delta R.T.: 0.000 min  
 Response: 67890428  
 Conc: 21.09 ng/ml



#2 Decachlorobiphenyl

R.T.: 10.057 min  
 Delta R.T.: -0.001 min  
 Response: 48406008  
 Conc: 19.73 ng/ml



#2 Decachlorobiphenyl

R.T.: 8.637 min  
 Delta R.T.: -0.002 min  
 Response: 55937776  
 Conc: 20.40 ng/ml